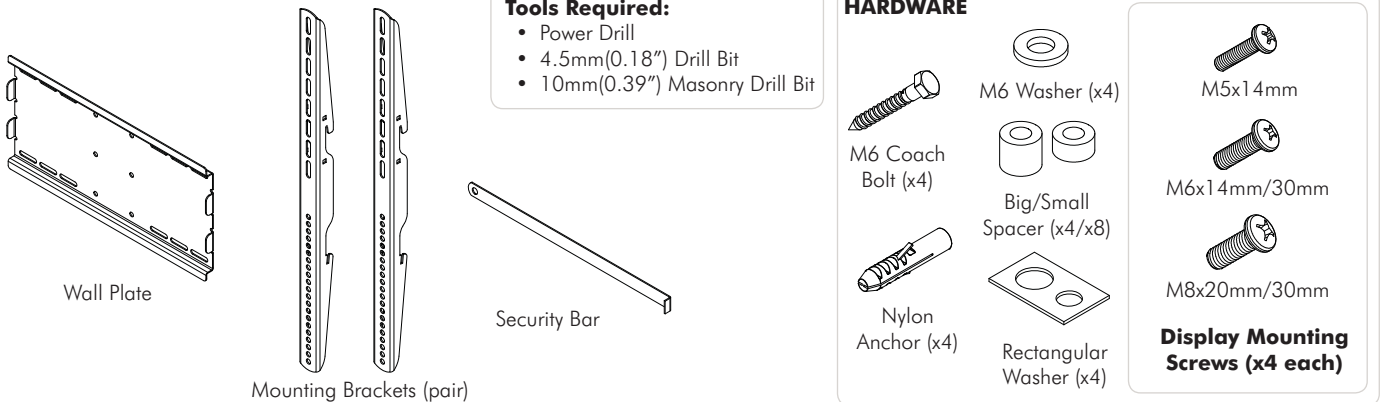


Installation Instructions

telehook

Flat Screen Fixed Portrait Wall Mount

Component Checklist



IMPORTANT INFORMATION:

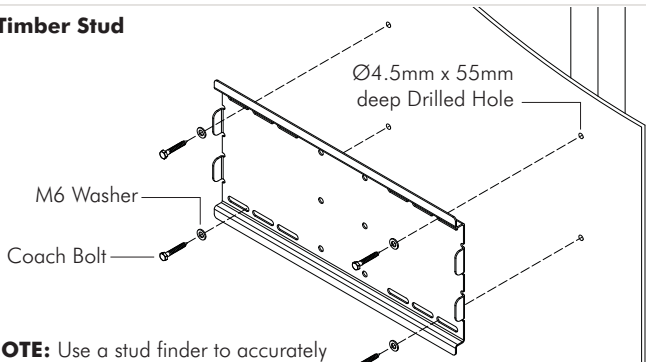
- ! **IMPORTANT - Install Telehook Flat Screen Portrait Wall Mount as per installation instruction.**
- ! This product supports a maximum load of 70kg (154lbs.).
- ! This product supports Screen Mounting Hole Configurations: From 200mm to 600mm wide and from 200mm to 400mm high.
- ! The manufacturer accepts no responsibility for incorrect installation.

Step 1. Check Components

Check you have received against the component checklist and hardware above.

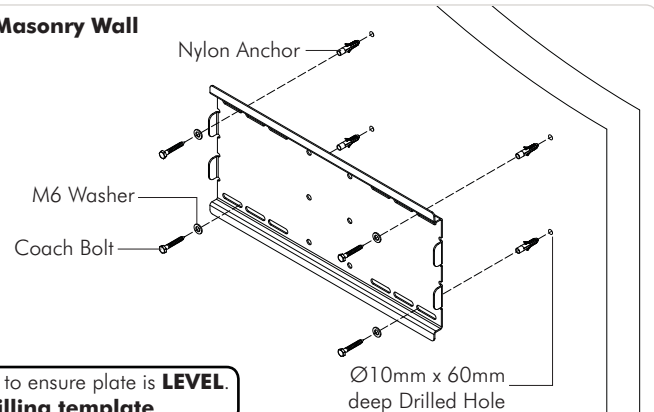
Step 2. Attach Wall Plate to the Wall

Timber Stud



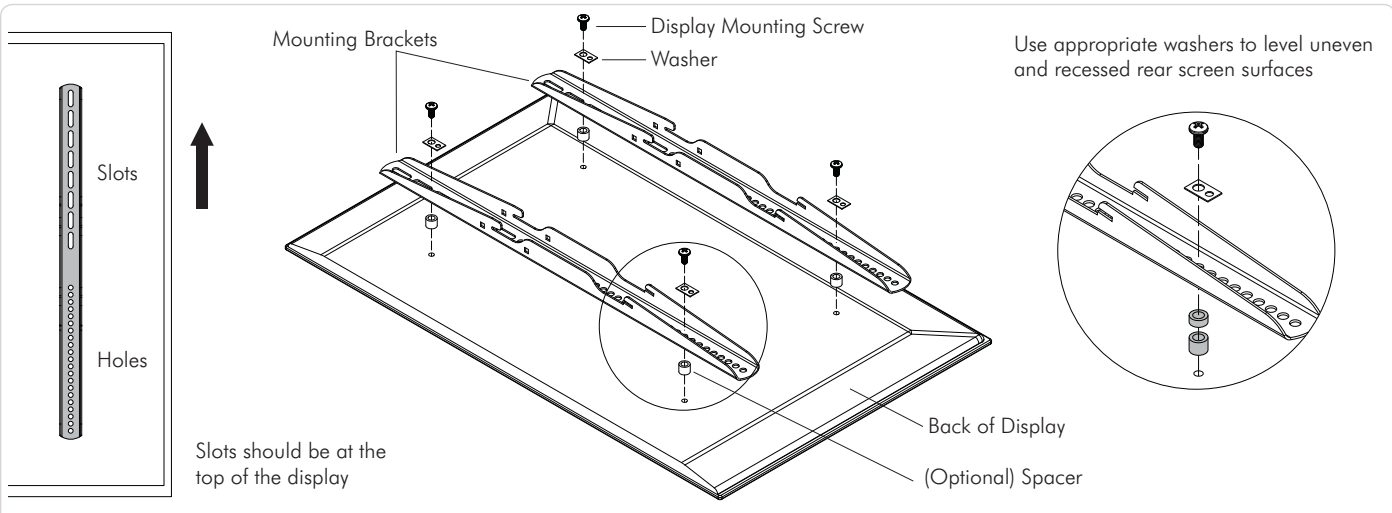
NOTE: Use a stud finder to accurately locate the center of the stud. Ensure that all screws fix securely into the stud.

Masonry Wall

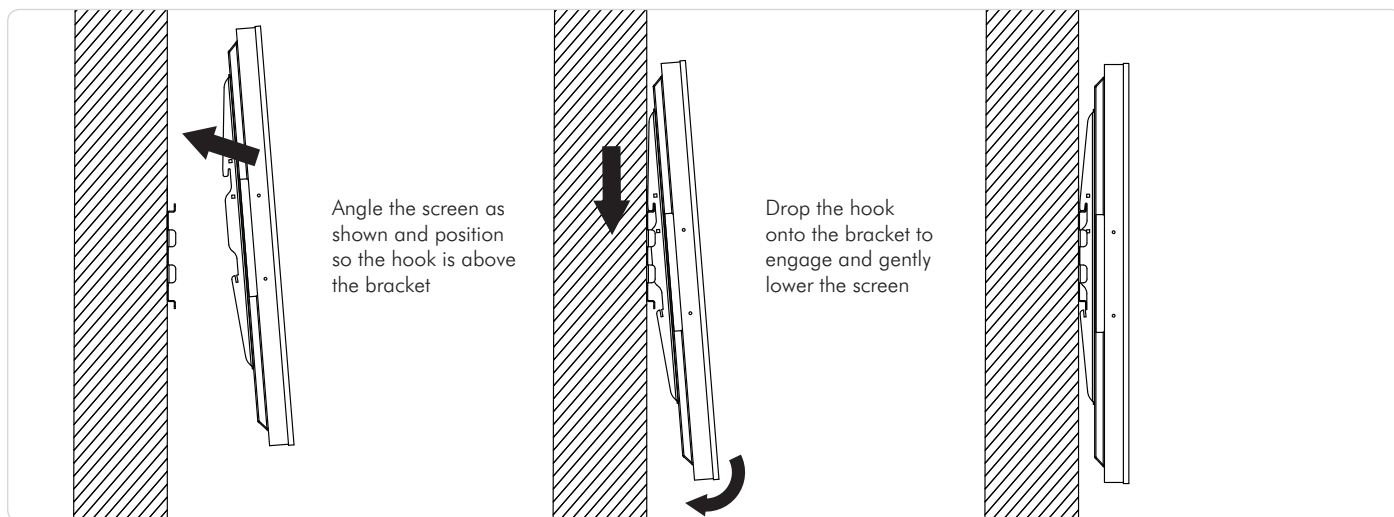


Tips 1. Please use a **Spirit Level** to ensure plate is **LEVEL**.
2. Use the Wall Plate as a **drilling template**.

Step 3. Attach Mounting Brackets to Display in Portrait Position



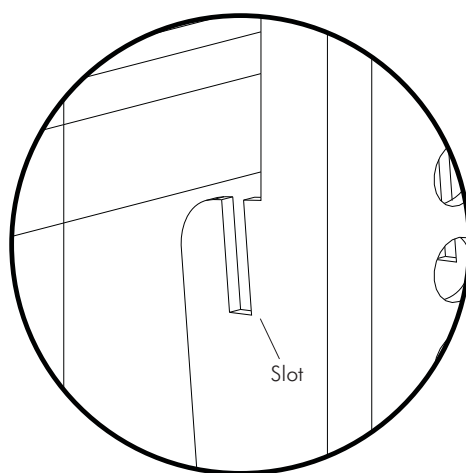
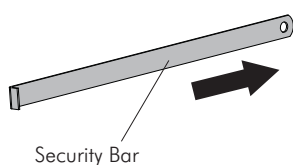
Step 4. Mount the Display to the Wall



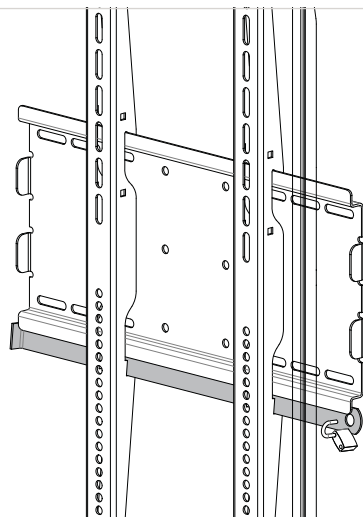
Step 5. Security

Step 5a

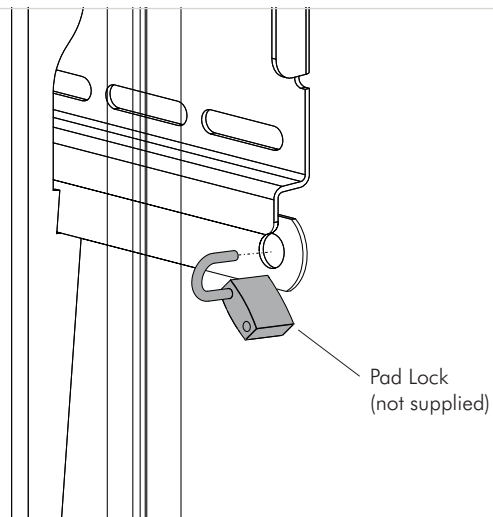
Insert the Security Bar into the slots on the Mounting Brackets with the tab facing outwards.



Step 5b



Secure with a Pad Lock.



Installation Complete



No portion of this document or any artwork contained herein should be reproduced in any way without the express written consent of Atdec Pty Ltd. Due to continuing product development, the manufacturer reserves the right to alter specifications without notice. Published 18.07.13 ©