

# SanDisk®

 **sansa clip+**

MP3 Player

**User Manual**

Technical Support

Worldwide: [www.sandisk.com/support](http://www.sandisk.com/support)

Knowledgebase: <http://kb.sandisk.com>

Forum: <http://forums.sandisk.com/sansa>

For more information on this product, please visit [www.sandisk.com/support/clipplus](http://www.sandisk.com/support/clipplus)

Clip+UM809-ENG

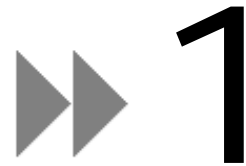


# ▶▶ Table of Contents

<b>Safety Tips &amp; Cleaning Instructions</b> .....	<b>1</b>
<b>Sansa<sup>®</sup> Clip+ MP3 Player Overview</b> .....	<b>2</b>
Features .....	2
Minimum System Requirements .....	2
Package Contents.....	3
Sansa <sup>®</sup> Clip+ at a Glance .....	3
Main Menu Options .....	4
Playback Screen.....	5
Battery .....	5
<b>Basic Usage</b> .....	<b>7</b>
Power Button.....	7
Power On .....	7
Power Off .....	7
Lock Function.....	7
Reset.....	8
Connecting to your Computer .....	8
Removing the player from your computer: .....	9
<b>Loading Content</b> .....	<b>10</b>
Loading Music .....	10
Drag and Drop (Windows).....	10
Drag and Drop (Mac) .....	10
Windows Media Player.....	11
<b>Playing Content</b> .....	<b>16</b>
Playing Music.....	16
Playing music from a preloaded microSD <sup>™</sup> Card .....	18
microSD <sup>™</sup> card with content .....	18
slotMusic <sup>™</sup> card .....	18
slotRadio <sup>™</sup> card .....	19
<b>FM Radio</b> .....	<b>20</b>
Listening to FM Radio.....	20
Programming FM Presets .....	20
<b>Recording</b> .....	<b>21</b>
Voice Recording .....	21
<b>Deleting Music Files</b> .....	<b>22</b>

# ▶▶ Table of Contents

<b>Settings</b> .....	<b>23</b>
Music Options .....	23
Repeat .....	23
Shuffle .....	23
Music EQ .....	23
Replay Gain .....	23
Audiobook Options .....	24
Ch. Mode .....	24
Speed .....	24
Radio Options .....	24
Delete All Presets .....	24
FM Region .....	24
FM Mode .....	24
System Settings .....	24
Backlight .....	24
Power Saver .....	25
Sleep .....	25
Language .....	25
Date & Time .....	25
Brightness .....	25
Volume .....	25
Reset Factory Settings .....	25
Info .....	25
USB Mode .....	26
Format .....	26
Press and Hold .....	26
<b>Tips &amp; Troubleshooting</b> .....	<b>27</b>
<b>Learn More, Service, and Warranty Information</b> .....	<b>29</b>
Getting Technical Support .....	29
SanDisk Limited Warranty .....	29
End User License Agreement .....	33



*This chapter provides you the safety tips and cleaning instructions for your Sansa® Clip+ MP3 player.*

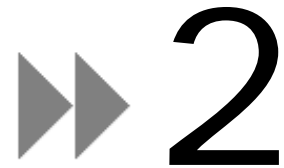
# Safety Tips & Cleaning Instructions

Read the safety instructions carefully before using your Sansa® MP3 player.

1. Read this entire manual to ensure proper usage.
2. Keep this User Manual for future reference.
3. Do not use headphones/earphones while driving, cycling, or operating any motorized vehicle. This may create a traffic hazard and may be illegal in some areas. It can also be dangerous to play your music with headphones/earphones at high volume while walking, or engaged in other activities. You should exercise extreme caution and discontinue use in potentially hazardous situations.
4. Avoid using headphones/earphones at high volume. Hearing experts advise against continuous loud and extended music play. Keep the volume at a moderate level, so that you are better able to hear outside sound and are considerate of the people around you.
5. Keep your player away from sinks, drinks, bathtubs, showers, rain, and other sources of moisture. Moisture can cause electric shocks with any electronic device.
6. Follow these tips to keep your player working well for a long time:
  - Clean your player with a soft lint-free cloth.
  - Do not allow young children to use your player unsupervised.
  - Never force any connector into the ports of your player or your computer. Make sure your connectors are the identical shape and size before you connect.
  - Do not disassemble, crush, short-circuit or incinerate battery as it may cause fire, injury, burns or other hazards.

## Disposal Instructions

Do not dispose of this device with unsorted waste. Improper disposal may be harmful to the environment and human health. Please refer to your local waste authority for information on return and collection systems in your area.



*This chapter helps you familiarize yourself with the features and functionality of your Sansa<sup>®</sup> Clip+ MP3 player.*

# Sansa<sup>®</sup> Clip+ MP3 Player Overview

Congratulations on your purchase of a Sansa<sup>®</sup> Clip+ MP3 player!

Sansa<sup>®</sup> Clip+ MP3 player is a sleek and wearable MP3 player with a removable clip and a 1.0" display screen. Additionally, you can listen to FM radio broadcasts and enjoy a built-in microphone for voice recordings. The Sansa<sup>®</sup> Clip+ MP3 player comes with a built-in rechargeable battery which can last up to 15 hours during typical use.\*

## Features

- **Digital audio player** – supports MP3, WAV, WMA, secure WMA, FLAC, Ogg-Vorbis, and audiobook files.
- **slotRadio<sup>™</sup> playback** - plays slotRadio<sup>™</sup> cards
- **FM radio** – includes an integrated FM radio with digital tuner for listening to live-broadcast FM radio programs.
- **Voice recorder** – supports voice recording function with built-in microphone.
- **EQ effect** – select an EQ mode to personalize your music experience.
- **Internal memory** – store data on the internal memory.
- **microSD<sup>™</sup> card slot** – add a microSD<sup>™</sup> card for additional storage or insert a slotMusic<sup>™</sup> or slotRadio<sup>™</sup> card with pre-loaded content.
- **Music subscription compatible** - works with most subscription services using WMDRM10, such as Rhapsody<sup>®</sup>.
- **Supports gapless playback.**

## Minimum System Requirements

- Windows XP SP2 or Mac OS 10.3 (mass storage class)
- Windows Media Player v10 (for playlist creation and synchronizing library and device)
- Intel Pentium class PC or higher
- USB 2.0 port for hi-speed transfers and charging

\*Based on continuous playback at 128 Kbps MP3; actual life and performance may vary depending upon usage and settings; battery not replaceable.

# Package Contents

Please unpack your **Sansa® Clip+ MP3 Player** and check that the following were included:

- Sansa® Clip+ MP3 player
- Earphones
- USB 2.0 Cable
- Quick Start Guide

## Sansa® Clip+ MP3 Player at a Glance



1	Display screen	Displays the information and status here
2	Up/Play/Pause	Press to move up one item, play, or pause
3	Left/Previous/Rewind	Press for previous track, rewind, or move left
4	Select	Press to select the item
5	Down/Submenu	Press to move down or to open sub-menu options
6	Right/Forward	Press for next track, fast forward, or move right
7	Home	Returns to the Main Menu; press-and-hold to lock or unlock
8	microSDHC™ card slot	Insert microSD™, microSDHC™, slotMusic™ or slotRadio™ card

here

9	Earphone Port	Connect earphones here to listen
10	Power	Press-and-hold to turn the player on or off
11	Microphone	Built-in microphone for voice recording
12	USB Port	Plug USB cable here to connect to the computer
13	Volume Up	Turns up the volume
14	Volume Down	Turns down the volume
15	Clip	Attach player to clothes, a bag, or another convenient place.

## Main Menu Options



**Music** – browse and listen to music, audio books, or recordings



**Radio** (if applicable) – listen to FM broadcast radio and save presets



**Voice** – record voice using built-in microphone



**Settings** – view or customize the Sansa player features



**slotRadio** – playback slotRadio™ cards

## Playback Screen



1	Shuffle	Indicates that the Shuffle function is enabled
2	Repeat	Indicates that the Repeat function is enabled
3	Current/Total Tracks	Displays the current track number and the total number of tracks
4	Battery Indicator	Displays the battery status
5	Artist Name	Displays the artist name
6	Title	Displays the track name
7	Play Time	Displays the elapsed time
8	Progress Bar	Displays the progress of the current track
9	Play/Pause	Displays the music or recording playback status

## Battery

The Sansa<sup>®</sup> Clip+ MP3 player comes with an internal rechargeable battery. To use the player for the very first time, remember to fully charge the battery. You can charge your Sansa<sup>®</sup> player through the USB port of your computer, a car adapter (not included), or AC adapter (not included).

### Charging

To charge the battery, please follow these steps:

1. Connect the larger end of the USB cable into an available USB port on the PC.
2. Connect the smaller end of the USB cable into the Sansa<sup>®</sup> Clip+ MP3 player.
3. The computer must be on for most USB ports to charge your battery. Your Sansa<sup>®</sup> will show connected and the yellow charging indicator will appear. The battery level indicator will blink while charging. You will not be able to play music while the player is connected to a computer.
4. To stop recharging, disconnect the USB cable.



The battery can also be charged using an AC adapter (not included) or a car adapter (not included). You will be able to play your device while charging with one of the adapters.

If your device is not recognized by your computer, make sure you have Windows Media™ Player version 10 or higher installed. You can also change the **USB Mode** to **MSC** if you do not have Windows Media Player. For Mac, ensure that **USB Mode** is set to **Auto Detect** or **MSC** mode. See [Section 9 – Settings](#) for more details.

**NOTE:** Some low-power USB ports may not be able to provide enough charge power. Also note that the rechargeable battery included inside the player is not replaceable.

*This chapter provides you the basic usage instructions for your Sansa® Clip+ MP3 player.*

# Basic Usage

## Power Button

The power button is located on the top of the player. It can turn the player on or off, lock or unlock the buttons, or reset the player.

### Power On

Press the **Power** button once to turn on the player. The Main Menu will appear after it has been booted up.

### Power Off

Press and hold the **Power** button for approximately 2 seconds to turn off the player.

### Lock Function

All function keys will be disabled once **Lock** is engaged by pressing-and-holding the **Home** button once while the player is powered on. All the buttons on the Sansa® Clip+ MP3 player will not operate when **Lock** is active. Please note that the **Lock** function only works when the player is on.

The following message will appear on the display screen if any buttons is pressed while the player is in the locked position. Music should continue to play even if the player is locked.



To **unlock** the player, press-and-hold the **Home** button until an “Unlocked” message appears.

## Reset

If the Sansa® Clip+ MP3 player freezes up for any reasons, press the **Power** button and hold it for approximately 15 seconds. This is similar a power down of the player. However, be aware that once you perform the reset, any adjustments you made during the last operation will be lost.

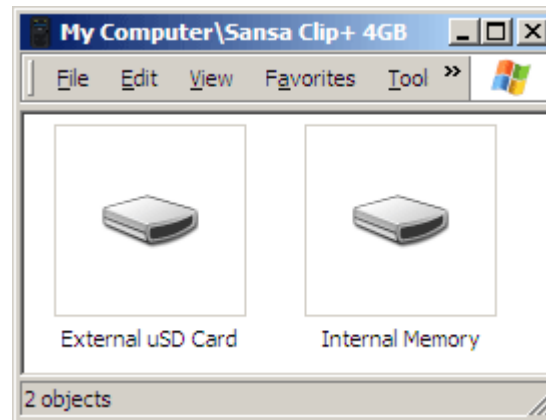
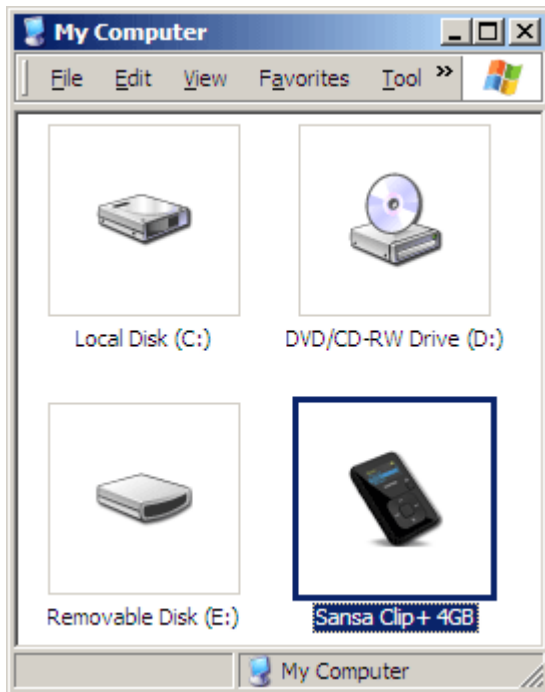
## Connecting to your Computer

To connect the Sansa® player to your PC, follow these instructions:

1. Connect the larger end of the USB cable into an available USB port on the PC.
2. Connect the smaller end of the USB cable into the dock connector of the player.
3. The player will show "Connected" on its display screen.
4. The player will appear in **My Computer** as Sansa Clip+. (In Mac OS, the player will appear on your desktop as a removable disk named **SANSA CLIPP**.)

**NOTE:** For Mac OS, the Clip+ player must be set to **Auto Detect** or **MSC** mode in the **USB Mode** settings. See [Section 9 – Settings](#) for more details.

### Auto Detect or MTP mode



## MSC mode

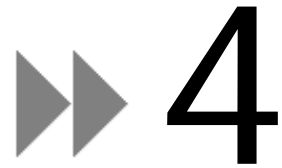


## Removing the player from your computer:

**WARNING:** Do not disconnect the player while it's transferring data. Disconnecting the player from the computer while data are being transferred may damage the player.

**Windows** – Simply disconnect the USB cable from the player after you have finished charging, transferring, firmware upgrading, or synchronizing files.

**Mac** – Eject the removable disk by dragging the icon to the Trash and then disconnect the USB cable.



*This chapter shows you how to transfer music files from your computer to your Sansa® Clip+ MP3 player.*

# Loading Content

## Loading Music

You can transfer music from your computer to the Sansa® MP3 player using the drag-and-drop method or using music management software like Windows Media Player.

### Drag and Drop (Windows)

Follow these steps to drag-and-drop music to your Sansa® Clip+ MP3 player:

1. Connect your Sansa® Clip+ player to your PC.
2. Select **Open device to view files using Windows Explorer** on initial connection or by going to My Computer.
3. Double-click on the **Sansa Clip+** MP3 player.
4. Double-click on **Internal Memory**.
5. Double-click on the **Music** folder.
6. Drag and drop music files from your computer to the Sansa® MP3 player's **Music** folder.

You can also drag and drop files to a microSD™ card inside your player by going to **My Computer > Sansa Clip+ > External uSD Card**. You can only drag and drop files to the card if you have write permissions for the card.

### Drag and Drop (Mac)

Follow these steps to drag-and-drop music to your Sansa® Clip+ MP3 player:

1. Connect your Sansa® Clip+ MP3 player to your Mac computer.
2. Double-click on the removable disk named **SANSA CLIPP** that appears on your desktop.
3. Double-click on the **Music** folder.
4. Drag and drop music files from your computer to the player's **Music** folder.

**NOTE:** Remember to eject the removable disk before disconnecting your player.

You can also drag and drop files to a microSD™ card inside your player by double-clicking the second removable disk that appears when you connect your Sansa® Clip+ MP3 player.

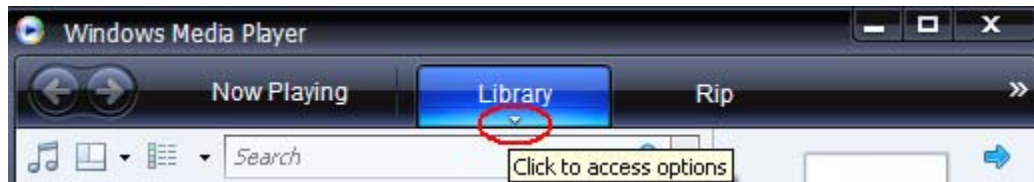
**NOTE:** The second removable disk will display with the card's name, just as if you connected it via a card reader. You can only drag and drop files to the card if you have write permissions for the card.

## Windows Media Player

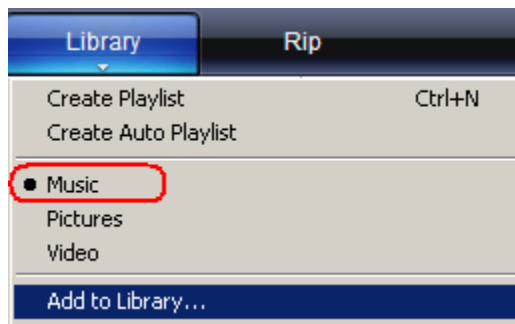
Before you can create playlists and transfer (or synchronize) them to your Sansa® MP3 player, you need to show Windows Media Player where your songs are located.

### Adding Music Files to Library...

1. To add music files to WMP 11's library, follow these steps:
2. Click the arrow below the **Library** tab.



3. Make sure **Music** is selected then click **Add to Library...**

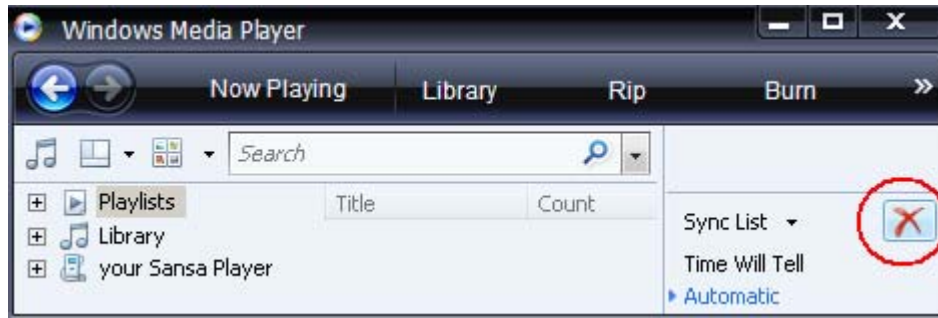


4. In the **Add to Library** dialog box, select one of these options then click **OK**.
  - **My personal folders:**  
Use this option to monitor the digital media files stored in your personal Music folder as well as any files stored in the public Music folders that everyone who uses your computer has access to.
  - **My folders and those of others that I can access:**  
Use this option to monitor the digital media files stored in your personal Music folder, the files stored in the public Music folders, as well as the files stored in the personal Music folders that belong to other users on your computer.

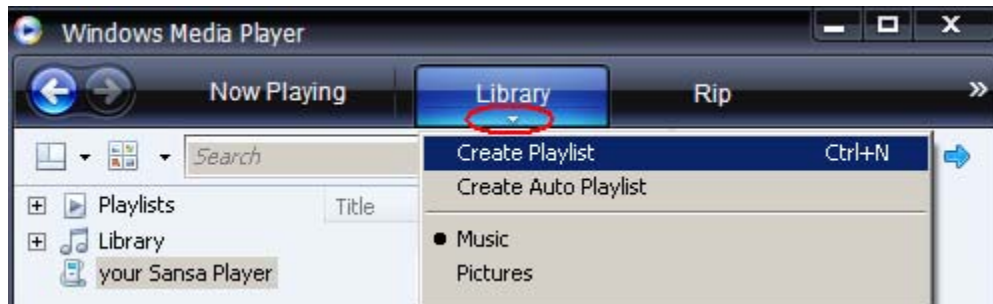
## Creating Playlists

To create playlists for Windows Media Player, follow these steps:

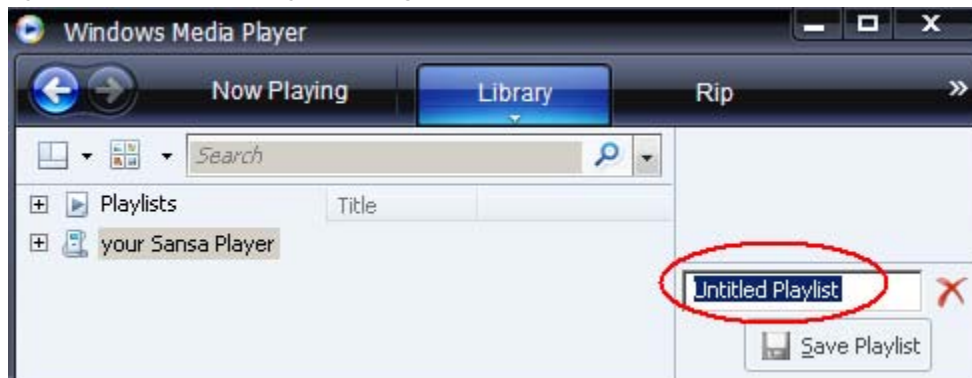
1. Launch Windows Media Player.
2. Clear the List pane by clicking the **Clear List Pane** button.



3. Click the arrow below **Library Tab** then select **Create Playlist**.



4. Type in the name of your **Playlist**.

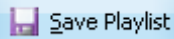


5. Click **Songs** from your Library then drag them to the **List Pane**.



6. To re-arrange the songs, drag them up or down in the **List Pane**.

7. Click **Save Playlist**.



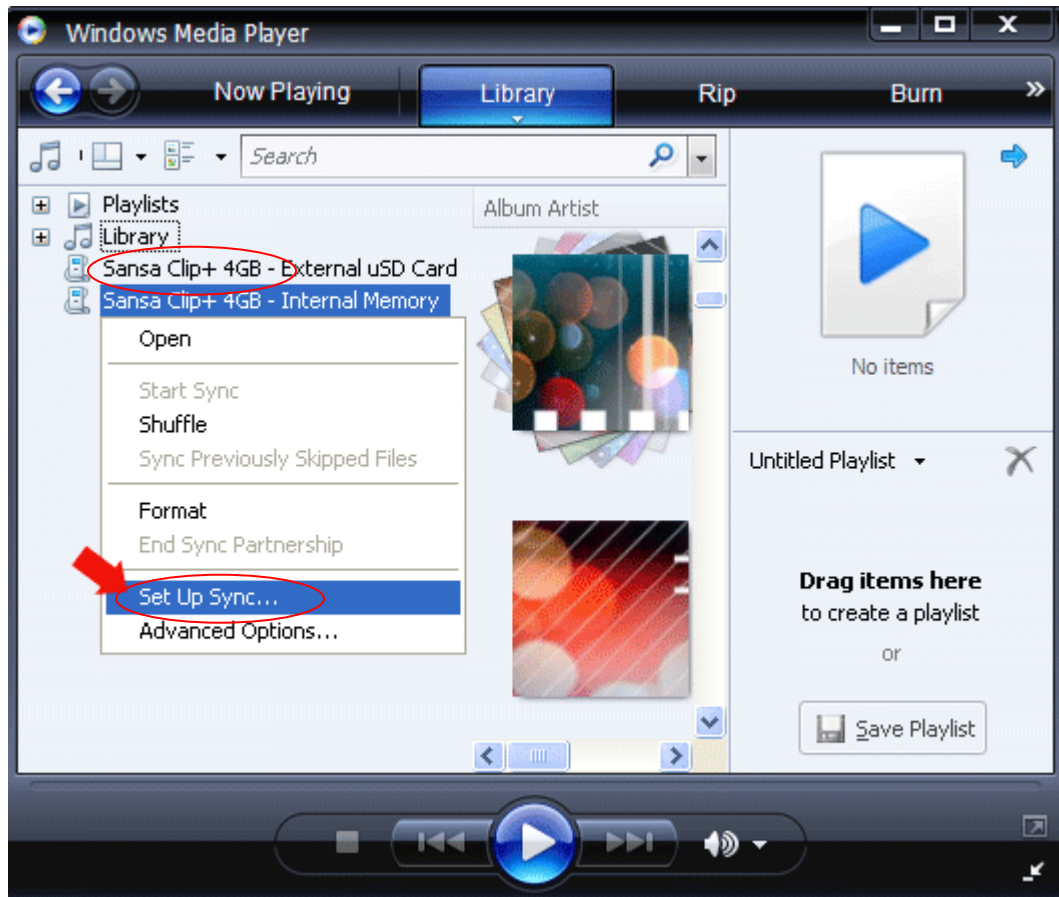
## Transferring Playlists

To transfer playlists to your Sansa® MP3 player, follow these steps:

1. Connect your Sansa® player to the PC.
2. Select **Sync digital media files to this device using Windows Media Player** on initial connection.

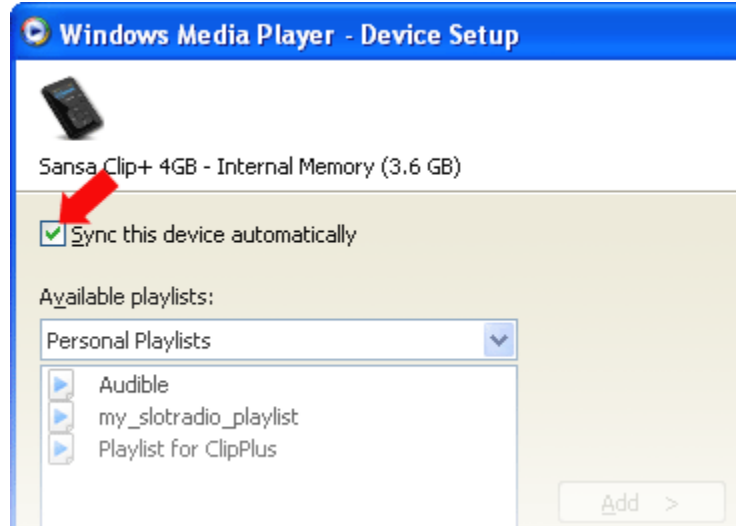


3. Right-click on **Sansa Clip+**, and then select **Set Up Sync**.

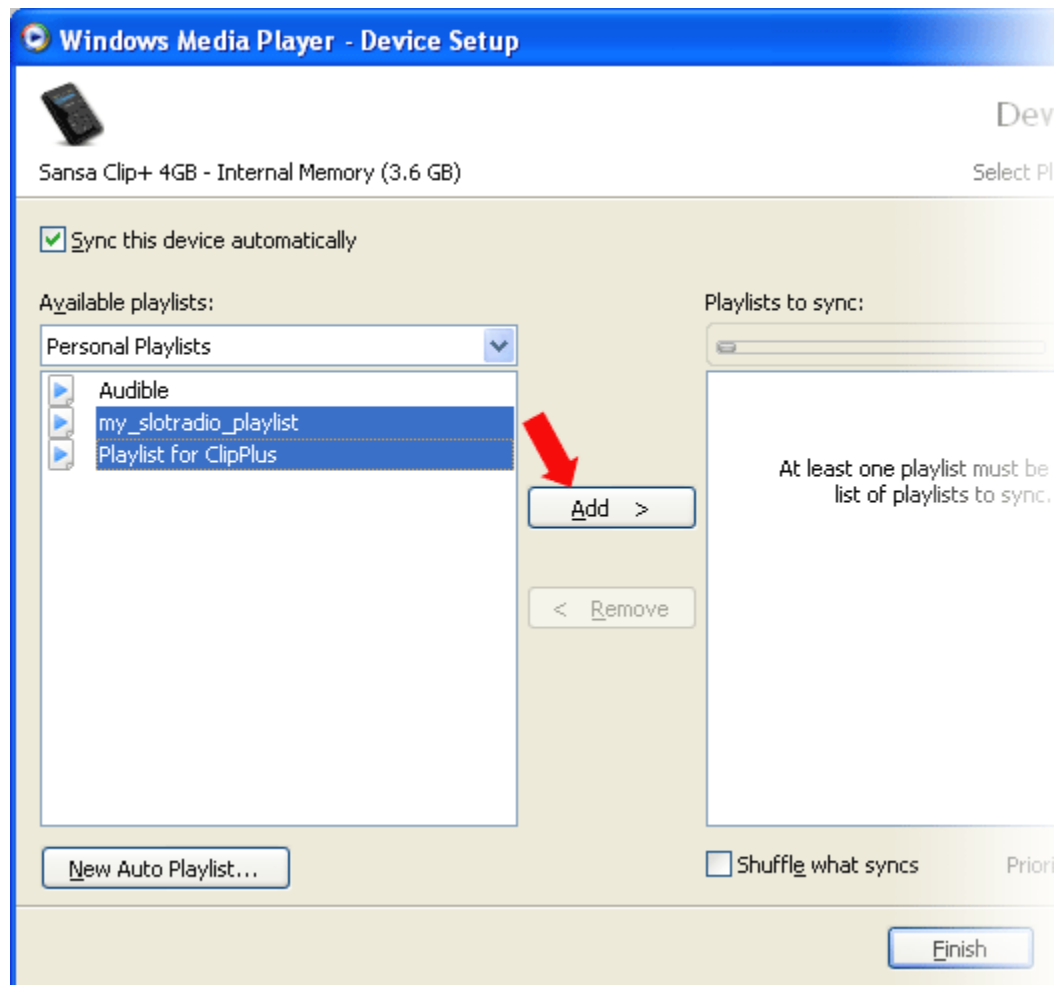




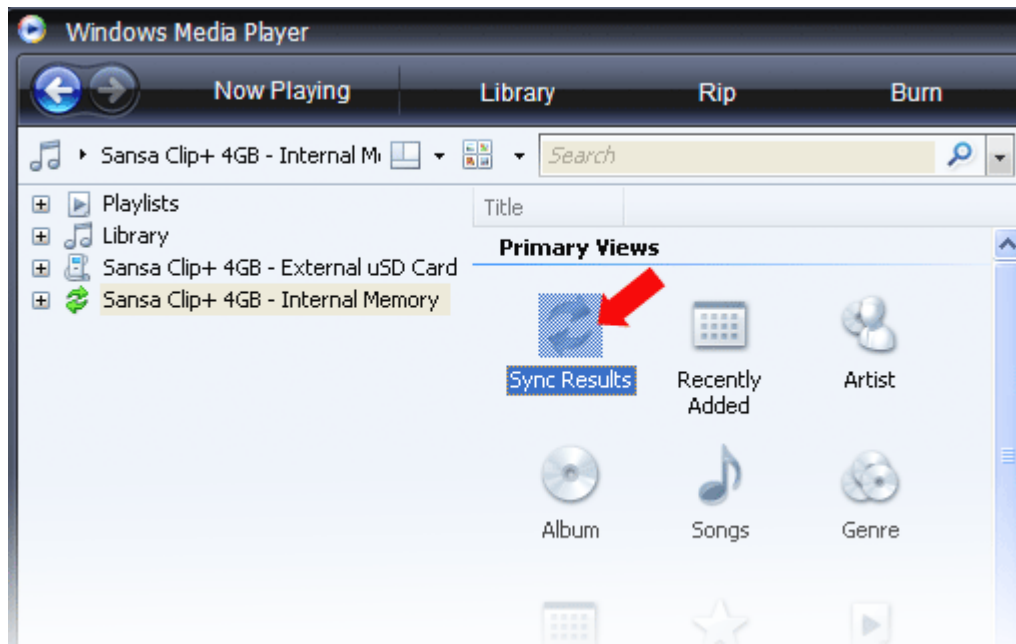
4. Click to select the **Sync this device automatically** check box.



5. Select **Personal Playlists** from the dropdown menu on the left pane.
6. Highlight any playlists that you want to transfer to your player, click **Add** then **Finish**.



7. Synchronization will start as soon as you click Finish. To see sync status, click on the Sansa Clip+ MP3 player, and then click **Sync Results**.



*This chapter shows you how to play music on your Sansa<sup>®</sup> Clip+ MP3 player.*

# Playing Content

## Playing Music

Follow these steps to play music, audiobooks, and voice recordings:

1. Select **Music** from the Main Menu. Voice recordings are located in Recordings.
2. Select **Play All, Recently Added, Artists, Albums, Songs, Genres, My Top Rated, Playlists, Podcasts, Audiobooks, Recordings (Voice), or Folders.**
3. Highlight and select the desired track or file to play.
4. Press the >>| button to skip to the next song or press-and-hold to fast forward.
5. Press the |<< button once to go back to the beginning of the current song or press |<< button twice to go back to the previous song. Press-and-hold the |<< button to rewind.
6. The following options are available during music playback by pressing the **Submenu** button (but not during slotRadio™ card playback, which permits skipping but not repeating of songs).

### Add song to GoList

1. Select **Add Song to GoList.**
2. Press the |<< button to return to the playback screen.

### Remove song from GoList

This option is only available when the current song is already added to the GoList.

1. Select **Remove Song from GoList.**
2. Press the |<< button to return to the playback screen.

### Rate Song

3. Select **Rate Song.**
4. Press the **Up** or **Down** button to select a rating.
5. Press **Select.**
6. Press the |<< button to return to the playback screen.

### Repeat

1. Move down to **Repeat.**
2. Press **Select** to toggle and choose a repeat mode:

- Off: No repeat of tracks
  - Song: Repeat the current track
  - All: Repeat all selected tracks
3. Press the |<< button to return to the playback screen.

## Shuffle

1. Move down to **Shuffle**.
2. Press the **Select** button to toggle between Shuffle on and Shuffle off (to play songs in random order, set Shuffle to ON).
3. Press the |<< button to return to the playback screen.

## Music EQ

The Sansa<sup>®</sup> Clip+ MP3 player provides various EQ modes such as: Rock, Pop, Jazz, Classical, Funk, Hip Hop, Dance, Full Bass, Full Treble, and Custom.

1. Select **Music EQ**.
2. Select an equalizer mode.
3. Press the |<< button to return to the playback screen.

## Replay Gain

Replay Gain is a method of maintaining a constant perceived volume level during playback. For more information on Replay Gain, please visit our Knowledgebase ([kb.sandisk.com](http://kb.sandisk.com)).

1. Select **Replay Gain**.
2. Press select on **Mode** to apply Replay Gain on Song, Album, or disable Replay Gain.
3. Press select on **Pre-Gain** to select the Replay Gain level.
4. Press the |<< button once to return to the previous menu or press |<< button twice to return to the playback screen.

## Delete Song

1. Select **Delete Song**.
2. Select **Yes** to confirm.

## Track Info

1. Select **Track Info**.
2. Press the **Up** or **Down** button to scroll through the track information.
3. Press the |<< button once to return to the previous menu or press |<< button twice to return to the playback screen.

# Playing music from a preloaded microSD™ Card

Note: The microSD logo will appear upside-down when properly oriented to insert into the microSD card slot.

## microSD™ card with content



1. Insert a microSD card with content into the microSD card slot. The player will display the message: "Refreshing your media."
2. Select **Music**.
3. Select **Artists, Albums, Songs, Genres** or **Recently Added** to navigate to the music you wish to listen to.
4. Alternately, from the **Music** menu, select **Folders > External uSD Card**, and select either **Play All** or continue navigating through the folders to the file name of the song you want.

Individual songs will display with a card icon to indicate they are stored on the external microSD™ card. Artists and Albums will not display an icon.

## slotMusic™ card



1. Insert a slotMusic™ card into the microSD™ card slot. The player will display the message: "Refreshing your media."
2. Select the slotMusic icon that appears in the main menu. This replaces the slotRadio icon that normally appears in the menu.
3. All songs on the card will be listed. Select a song to begin playing through the slotMusic album.

## slotRadio™ card

slotRadio™ cards contain hundreds of songs arranged into playlists called Channels. Your Sansa® Clip+ MP3 player can play slotRadio cards, but playback behavior will differ from your standard media per the instructions below. You can also go to [www.slotradio.com](http://www.slotradio.com) to learn more about slotRadio cards and available titles.



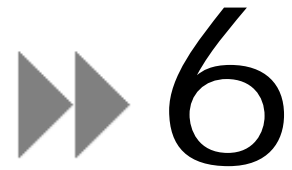
1 Current/Total Channels	Display the current channel number and the total number of channels
2 Battery Indicator	Display the battery status
3 Channel Name	Display the channel name
4 Artist Name - Title	Display the song's artist name and title



1. Insert a slotRadio™ card into the microSD™ card slot. The player will display the message: "Refreshing your media."
2. From the Main Menu, select **slotRadio**.
3. Press the **Select** button to begin playing.
4. Press the **Submenu** button to skip to the next channel.
5. Press the **>>|** button to skip to the next song within a channel.
6. Press **>||** to pause or resume playback.

Pressing select toggles the screen view from now playing to a graphic equalizer to the next song preview.

**NOTE:** In slotRadio™ mode, the **|<<** button will not function. You cannot restart a song or go to the previous song. All songs eventually repeat randomly on their own.



*This chapter provides you instructions on how to listen to FM broadcast radio and to program the preset stations on the Sansa® Clip+ MP3 player.*

## FM Radio

The Sansa® MP3 player includes an integrated FM radio for listening to live broadcast FM stations.

### Listening to FM Radio

To listen to live broadcast FM station, follow these steps:

1. From the Main Menu, select **FM Radio**.
2. A radio frequency menu will appear.
3. Press |<< or >>| to adjust and search for the desired frequency, or select preset by pressing **Select**.
4. For fast search, press and hold the |<< or >>| buttons.

### Programming FM Presets

You can program up 40 preset stations. To program the preset stations on your player, follow these steps:

1. Press the **Submenu** button in Radio mode.
2. Select **Add Preset** to save current frequency into presets.
3. Select **Delete Preset** to remove current frequency from presets. This option is only available when the current frequency is already added.
4. Select **Auto Presets** to allow the player to automatically search and store stations with the strongest broadcast signals as the preset favorite stations.
5. Select **View All Presets** to view all stored presets.
  - a. Select **Delete All Presets** to erase all stored preset stations.



*This chapter shows you how to use your Sansa® Clip+MP3 player's built-in microphone.*

# Recording

## Voice Recording

The Sansa® Clip+ MP3 player has a built-in microphone allowing you to record your own voice, an interview, or other speech.

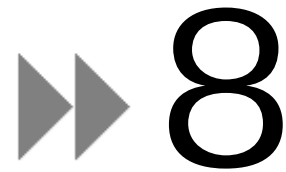
To start voice recording, follow these steps:

1. From the Main menu, select **Voice**.
2. Select **Record Now**.
3. To pause recording, press the >|| button.
4. To resume, press the >|| button again.
5. To stop recording, press **Select**. A pop-up window will appear on the screen. Select **Yes** to save recording. The recording will be saved in the **RECORD/VOICE** folder.
6. Press |<< button to return to the previous menu.

### **NOTE: For Home and Personal Use**

This product is intended to be used for recording and playback for your home and personal enjoyment. Copying and commercial use of copyrighted material without permission of the copyright owner may be prohibited by law. Use of your media player, in compliance with all copyright and applicable intellectual property laws, remains the responsibility of the user of the product.





*This chapter shows you how to delete contents on your Sansa<sup>®</sup> Clip+ MP3 player.*

## Deleting Music Files

There are 2 ways to delete music files. You can delete them from the player directly or using the computer.

To delete music files directly from the Sansa<sup>®</sup> MP3 player, follow these steps:

1. In playback mode, press **Submenu** button.
2. Select the **Delete Song** item.

To delete music files using a computer, follow these steps:

1. Connect your Sansa<sup>®</sup> to the computer.
2. Select **Open device to view files using Windows Explorer** on initial connection.
3. Locate the folder where your music files are stored.
4. Highlight and delete the music files or folder.



*This chapter shows you how to customize your Sansa<sup>®</sup> Clip+ MP3 player's settings*

# Settings

You can personalize your Sansa<sup>®</sup> Clip+ MP3 player by selecting **Settings** from the **Main Menu**.

## Music Options

From the Settings menu, select **Music Options**.

### Repeat

1. Move down to **Repeat**.
2. Press **Select** to toggle and choose a repeat mode:
  - Off: No repeat of tracks
  - Song: Repeat the current track
  - All: Repeat all selected tracks

### Shuffle

1. Move down to **Shuffle**.
2. Press **Select** to toggle between **Off** and **On**.

### Music EQ

1. Select **Music EQ**.
2. Select a desired equalizer mode.

### Replay Gain

1. Select **Replay Gain**.
2. Select **Mode (Off, Song or Album)** and a **Pre-Gain volume (0dB to 12dB)** to increase the player's volume output for songs with replay gain information stored in their ID3 tags. This helps normalize the volume across tracks with varying loudness levels. You can learn more about Replay Gain at <http://www.replaygain.org/>.

# Audiobook Options

From the Settings menu, select **Audiobook Options**.

## Ch. Mode

When Chapter Mode is on, it allows you to skip chapters in an audiobook by pressing the |<< or >>| button.

1. Highlight **Ch. Mode**.
2. Press the **Select** button to toggle between **Off** and **On**.

## Speed

1. Highlight **Speed**.
2. Press the **Select** button to toggle between **Normal**, **Fast**, and **Slow** audiobook playback.

# Radio Options

From the Settings menu, select **Radio Options**.

## Delete All Presets

1. Select **Delete All Presets**.
2. Select **Yes** to confirm.

## FM Region

1. Press **Select** on **FM Region** to toggle between **USA** or **World**.

## FM Mode

1. Press **Select** on **FM Mode** to toggle between **Stereo** or **Mono**.

# System Settings

From the Settings menu, select **System Settings**.

## Backlight

After being idle for a predefined time, the player will trigger the backlight timer program automatically to turn off the backlight. You can press any button to re-activate the backlight.

1. Select **Backlight**.
2. Press the |<< or >>| button to select desired backlight timer (5 seconds to 1 hour).
3. Press **Select** and confirm your choice by selecting **Yes** or **No**.

## Power Saver

The Power Saver function turns the player off automatically when it has been idle for a defined period of time.

1. Select **Power Saver**.
1. Press the |<< or >>| button to select desired time (off to 120 minutes) before power off. The player will not enter the power saver mode if it is set to off.
2. Press **Select** and confirm your choice by selecting **Yes** or **No**.

## Sleep

The Sleep function turns the player off automatically after a defined period of playback time.

2. Select **Sleep**.
3. Press the |<< or >>| button to select desired playback time before power off. The player will not enter the sleep mode if it is set to off.
4. Press **Select** and confirm your choice by selecting **Yes** or **No**.

## Language

1. Select **Language**.
2. Select a desired language.

## Date & Time

1. Select **Date & Time**.
2. Set the Month, Date, Year, Hour, Minute, and time format.

## Brightness

To adjusting the display brightness for better viewing in different lighting environment, follow these steps:

1. Select **Brightness**.
2. Press the |<< or >>| button to set the contrast level.
3. Press **Select** and confirm your choice by selecting **Yes** or **No**.

## Volume

1. Select **Volume**.
2. Select **Normal** or **High**, and then press **Select** button.

## Reset Factory Settings

1. Select **Reset Factory Settings**.
2. Confirm your choice by selecting **Yes** or **No**.

## Info

This displays information regarding your Sansa® Clip+ MP3 player (such as firmware version, available/free memory, number of contents loaded in the player, and the battery status)

## USB Mode

USB Mode determines how your player communicates with your computer. Auto Detect is selected by default. You can also choose to always connect in MTP (Media Transfer Protocol) or MSC (Mass Storage Class) modes. Windows can use MTP or MSC mode, but Mac OS will only work with MSC mode. If you set the USB Mode to Auto Detect, make sure you are running Windows Media Player version 10 or higher.

1. Select **USB Mode**.
2. Select **Auto Detect, MTP, or MSC**.

## Format

**WARNING:** Formatting will *erase all your data*.

1. Select **Format**.
2. Confirm your choice by selecting **Yes** or **No**.

## Press and Hold

Determine whether pressing and holding the select button during playback will add a song to the GoList or allow you to rate the song. (Note that neither choice will function during playback of a slotRadio™ card.)

1. Select **Press and Hold**.
2. Select **Add Song to GoList** or **Rate Song**.



*This chapter helps you get the most from your Sansa<sup>®</sup> Clip+ MP3 player with tips and troubleshooting.*

## Tips & Troubleshooting

**What music file formats does the Sansa<sup>®</sup> Clip+ MP3 player support?**

The Sansa<sup>®</sup> MP3 Player will support MP3, WAV, WMA, secure WMA, FLAC, Ogg Vorbis, and audiobook formats.

**How do I drag music files to my Sansa<sup>®</sup> Clip+ MP3 player?**

As long as the files are WMA, MP3, FLAC, or Ogg Vorbis, they can be dragged into the Music folder. Secure WMA files cannot be dragged and dropped. Use Windows Media™ Player 10 or higher to sync protected files.

**Which bit rates will the Sansa<sup>®</sup> Clip+ MP3 player support?**

The Sansa<sup>®</sup> Clip+ MP3 player will support 64-320Kbps for MP3 and 32-192Kbps for WMA. FLAC and Ogg Vorbis are variable bit rate.

**Why should I update the firmware?**

You should always update the player to the latest firmware to ensure that it functions correctly and has all the latest features. Visit [www.sandisk.com/clipplus](http://www.sandisk.com/clipplus) to download the Sansa Firmware Updater.

**Some of my music files are on my player, but cannot be played. When I select them, another song begins to play. What is wrong?**

You may not have purchased the rights to play the song on an additional device. To test this, try to play a song that you have copied from an older CD and converted to MP3 format. If you can play that song, but not the song that will not play, then you need to purchase the rights to play the song.

**Is the player compatible with podcasts?**

As long as the podcasts are in MP3 format and an appropriate bit rate (32-320 kbps), then the player should be capable of playing the files.

## Why does my player say unknown artist/album?

Normally this is because the ID3 tags or WMA meta-data information is missing. On your computer, right-click the song, choose Properties, Summary tab then Advanced. Then you can input the data such as Artist, Album, Song Title, Track Number, Genre, and Year.

## How do I reset my Sansa<sup>®</sup> Clip+ MP3 player?

Press-and-hold the **Power** button for approximately 20 seconds, and then release the power button.

## Why can't I drag and drop OGG files to my Sansa<sup>®</sup> Clip+ MP3 player using Windows Media Player?

To drag and drop OGG files to the Sansa<sup>®</sup> Clip player, you need to upgrade your Windows Media Player to version 11.

## Why won't my Sansa<sup>®</sup> Clip+ MP3 player play music?

Check to verify if the audio file type is supported. If the file type is supported, make sure that the file is not corrupted and that its license is up to date.

## Why isn't my Sansa<sup>®</sup> Clip+ MP3 player being charged or detected by my computer when I connect it?

Verify that you are using Windows Media Player version 10 or higher, reset your player, and try again.

*This chapter provides information to help you get service and support for your Sansa® Clip+ MP3 player.*

# Learn More, Service, and Warranty Information

## Getting Technical Support

Before you contact Technical Support, we encourage you to read the [Tips & Troubleshooting](#) section to see if your question is covered there.

If you have questions about the use or features of your Sansa player as well as other SanDisk products, please visit our Knowledgebase at [kb.sandisk.com](http://kb.sandisk.com).

You can also call the SanDisk Technical Support Center for **US**: 1-866-SanDisk (1-866-726-3475), **Worldwide**: see [www.sandisk.com/support](http://www.sandisk.com/support) for local country phone numbers. When you call us for support, please include as much information as you can from your packaging material. This will allow us to help you more quickly.

## SanDisk Manufacturer's Limited Warranty

SanDisk warrants to the end user, that this product, excluding content and or software supplied with or on the product, will be free from material defects in manufacture, will conform to SanDisk's published product specifications and be fit for normal use during the Warranty Period specified in the table commencing on the date of purchase provided that the product is legally placed on the market.

To make a warranty claim please contact SanDisk at the telephone number in the table or [support@SanDisk.com](mailto:support@SanDisk.com) within the Warranty Period and provide proof of purchase (showing date and place of purchase and name of the reseller) and product name, type and number. You may return the product after first obtaining a Return Material Authorization number and following any other guidelines listed. For further information see [www.sandisk.com](http://www.sandisk.com) and select "support".

SanDisk may at its option repair this product or provide you with an equivalent product; and if unable to repair or replace the product, will refund the purchase price. SanDisk will not be liable for indirect or consequential damage (including loss of data), or for damage caused by improper use (including use in an incompatible device and use not in accordance with the instructions), or by improper installation, unprofessional repair, modification or accident. This constitutes SanDisk's entire liability which will never exceed the price you paid for it, plus the necessary costs you made for the warranty claim. SanDisk products must not be used in applications where failure could threaten injury or life, such as life support systems. SANDISK DISCLAIMS ALL EXPRESS AND IMPLIED WARRANTIES TO THE FULLEST EXTENT PERMITTED BY LAW. IF SANDISK CANNOT DISCLAIM IMPLIED WARRANTIES UNDER APPLICABLE LAW, THEN TO THE EXTENT POSSIBLE, SUCH IMPLIED WARRANTIES ARE LIMITED TO THE DURATION OF THE EXPRESS WARRANTY. THE WARRANTY DURATION ON



ANY REPLACED PRODUCT WILL BE THAT PORTION OF THE WARRANTY PERIOD REMAINING ON YOUR ORIGINAL PRODUCT.

National, state and local laws may grant you other rights that are not affected by this warranty.

Warrantor

N. America, Canada, S. America:  
 SanDisk Corporation  
 601 McCarthy Boulevard  
 Milpitas, CA 95035  
 Tel: 1-866-SANDISK (1-866-726-3475)

Europe, Middle East & Africa & Asia Pacific:  
 SanDisk International, Ltd.,  
 Lakeshore Drive, Swords, Co  
 Dublin, Ireland  
 Tel: +353-1-813-6070

Japan:  
 SanDisk Limited (SDKK)  
 8F Nisso 15 Bldg. 2-17-19 Shin-Yokohama  
 Kohoku-ku, Yokohama, Japan 222-0033

Product Name	Warranty Period (Years)
<b>SanDisk Extreme® Line</b>	
SanDisk Extreme® III SDHC™ Cards	Lifetime** (10 EMEA***)
SanDisk Extreme® III 30MB/s Edition SDHC™ Cards	Lifetime** (10 EMEA***)
SanDisk Extreme® SDHC™ Cards	Lifetime** (30****)
SanDisk Extreme® CompactFlash® Cards	Lifetime** (30****)
SanDisk Extreme® III CompactFlash® Cards	Lifetime** (10 EMEA***)
SanDisk Extreme® IV CompactFlash® Cards	Lifetime** (30 EMEA***)
SanDisk Extreme® FireWire® Reader	3
SanDisk Extreme® USB 2.0 Reader	2
SanDisk Extreme® Memory Stick PRO-HG Duo™	Lifetime** (10 EMEA***)
SanDisk Extreme® Ducati Edition SD™ Plus Card; SanDisk Extreme® Ducati Edition CompactFlash® Card; and SanDisk Extreme® Ducati Edition USB Flash Drive.	Lifetime** (30****)
<b>SanDisk Ultra®/ SanDisk Ultra® II Line</b>	
SanDisk Ultra®/ SanDisk Ultra® II SD™ Cards	Lifetime** (10 EMEA***)
SanDisk Ultra®/ SanDisk Ultra® II SDHC™ Cards	Lifetime** (10 EMEA***)

SanDisk Ultra®/ SanDisk Ultra® II CompactFlash® Cards	Lifetime** (10 EMEA***)
SanDisk Ultra®/ SanDisk Ultra® II Memory Stick PRO-HG Duo™ Cards	Lifetime** (10 EMEA***)
SanDisk Ultra®/SanDisk Ultra® II SanDisk® Video HD™ Cards	Lifetime** (10 EMEA***)
<b>SanDisk® Multi-Use (Standard Line)</b>	
SanDisk® SD™ Cards	5
SanDisk® SDHC™ Cards	5
SanDisk® Memory Stick PRO Duo™ Cards	5
SanDisk® xD-Picture Card™ Type M Cards	1
SanDisk® microSD™ and SanDisk® microSDHC™ Cards	5
<b>Gaming</b>	
SanDisk® Gaming SD™ Cards for Wii™ Cards	5
SanDisk® Gaming Memory Stick PRO Duo™ Cards	5
Nintendo® DSi™ SDHC™ Cards	5
<b>Netbook</b>	
SanDisk® SDHC™ Cards	5
<b>Cruzer® Line</b>	
SanDisk® Cruzer® Micro USB Flash Drive	2
SanDisk® Cruzer® Micro Skin USB Flash Drive	2
SanDisk® Cruzer® Titanium USB Flash Drive	5
<b>Mobile Line</b>	
SanDisk® microSD™ and SanDisk® microSDHC™ Cards	5
SanDisk® microSD™ Mobile Memory Kit	5
SanDisk® Memory Stick Micro™ (M2™) Cards	5
SanDisk® Mobile Ultra™ microSD™ Cards	10
SanDisk® Mobile Ultra™ microSDHC™ Cards	10
SanDisk® Mobile Ultra™ Memory Stick Micro™ (M2™) Cards	10
SanDisk® Mobile Premier microSD™ Cards	10
SanDisk® Mobile Premier microSDHC™ Cards	10

SanDisk® Mobile Premier Mobile Memory Kit	10
MobileMate™ Micro Reader	2
MobileMate™ SD™ Plus Reader	2
MobileMate™ SD™ Plus Reader	2
MobileMate™ Memory Stick® Plus Reader	2
<b>Audio Visual Players</b>	
Sansa® Clip Player	1 U.S.; 2 EMEA
Sansa® View Player	1 U.S.; 2 EMEA
Sansa® Fuze™ Player	1 U.S.; 2 EMEA
slotMusic™ Player	90 (days) U.S.; 2 EMEA
slotRadio™ Player	1 U.S.; Canada
slotRadio™ To Go Player and Card	90 (days) U.S.; 2 EMEA

\*\* Lifetime

\*\*\* EMEA and regions not recognizing lifetime

\*\*\*\* Germany and regions not recognizing lifetime

For Technical Support over the Internet, visit: [www.sandisk.com](http://www.sandisk.com) and select "support"

Technical Support in the United States and Canada can be contacted by calling:  
1-866-726-3475.

Technical Support in other regions can be obtained by contacting:

Support	
Argentina (AR)	#08006662931
Australia (AU)	866 680 4007
Belarus (BY)	8-800101-- 8008539045
Brazil (BR)	#08008914506
Chile (CL)	#1230-020-0404
China (CN) North	10800 852 1251
China (CN) South	10800 152 1251
Columbia (CO)	#018005180538
Estonia (EE)	+ 1 407 253 3479
France (FR)	+33 (0) 171 230 328
Germany (DE)	+49 (0) 69 50072840
Greece (GR)	407 253 3476
Hong Kong (H/K)	30027886
India (IN)	0008001003277
Israel (IL)	1 809 440513
Italy (IT)	+(39) 026-9682-725
Japan (JP)	866 349 2698
Korea (KR)	080-688-0880
Mexico (MX)	#0018662122012
Netherlands (NL)	(31) 202 015 029

New Zealand (NZ)	+ 1 866 698 0701
Portugal (PT)	+351 214159093
Romania (RO)	+ 1 407 253 3477
Russia (RU)	+7 (8) 495-795-0847
Saudi Arabia (SA)	866 514 2521
Singapore (SG)	800-852-3607
South Africa (ZA)	0800980949
Spain (ES)	+34 914534311
Sweden (SE)	020-79 52 02
Switzerland (CH)	0800 564811
Taiwan (TW)	00801-85-6062
Turkey (TR)	902124140820
UAE/Dubai (AE)	8000 4414358
UK (GB)	+44 (0) 207-365-4193

## End User License Agreement

SANDISK CORPORATION

END USER LICENSE AGREEMENT

DO NOT DOWNLOAD, INSTALL OR USE THE SOFTWARE UNTIL YOU HAVE CAREFULLY READ THE TERMS OF THIS END USER LICENSE AGREEMENT ("AGREEMENT"). BY DOWNLOADING, USING OR INSTALLING THE SOFTWARE, YOU AGREE TO ALL OF THE TERMS OF THIS AGREEMENT. IF YOU DO NOT AGREE TO ALL OF THE TERMS, DO NOT DOWNLOAD, INSTALL OR USE THE SOFTWARE AND, IF APPLICABLE, PROMPTLY RETURN IT TO YOUR PLACE OF PURCHASE FOR A REFUND. IF THE SOFTWARE WAS INCLUDED WITH YOUR PURCHASE OF HARDWARE, YOU MUST RETURN THE ENTIRE HARDWARE/SOFTWARE PACKAGE IN ORDER TO OBTAIN A REFUND. IF THE SOFTWARE WAS ACCESSED ELECTRONICALLY, CLICK "NOT ACCEPT" TO STOP THE DOWNLOAD PROCESS.

The firmware, computer programs, device drivers, data or information ("Software") is provided to each person who downloads, uses or installs the Software ("you" or "your") under the terms of this Agreement between you and SanDisk Corporation ("SanDisk," "we," or "us"), and may be subject to additional terms and conditions in an agreement between you and SanDisk's third party licensors ("Licensors"). The Software is owned by SanDisk or its Licensors. The Software is protected by copyright laws and international copyright treaties, as well as other intellectual property laws and treaties.

1. **Software License.** Subject to the terms and conditions contained herein, SanDisk grants to you a limited, non-exclusive, non-sub licensable, transferable in accordance with these terms, royalty-free license under SanDisk's intellectual property rights to use the Software in executable form solely for your personal use only with a SanDisk product and only on a single computer or other hardware device at any given time (the "License"). The Software is "in use" when it is either downloaded, copied, loaded into RAM or installed into the hard disk or other permanent memory of a computer or other hardware device.

2. **Restrictions.** SanDisk and its Licensors retain all rights in the Software not expressly granted to you. You may not modify, adapt, translate or create derivative works (new versions) of the Software. No source code is provided under this Agreement. You may not

reverse engineer, disassemble, decompile, rent, lease, or encumber the Software, or re-create or discover the source code of the Software. You may not embed or combine the Software within any other software product or device. The Software contains proprietary and confidential information of SanDisk and its Licensors, which you agree not to discover or reveal to others. Any and all permitted copies of the Software that you make or distribute must be unmodified, must contain all of the original Software's proprietary notices, and must include or be accompanied by this Agreement. You may not separate the Software into component parts for sublicense, distribution or transfer to a third party.

3. DISCLAIMER OF WARRANTIES. TO THE MAXIMUM EXTENT PERMITTED BY APPLICABLE LAW, THE SOFTWARE IS PROVIDED "AS IS" AND "AS AVAILABLE" WITH NO WARRANTIES AND NEITHER SANDISK NOR ITS LICENSORS MAKE ANY REPRESENTATION OR WARRANTY, STATUTORY OR OTHERWISE, IN LAW OR FROM THE COURSE OF DEALING OR USAGE OF TRADE, EXPRESS OR IMPLIED, INCLUDING WITHOUT LIMITATION, ANY WARRANTIES OF MERCHANTABILITY, FITNESS FOR A PARTICULAR PURPOSE, NON-INTERFERENCE, OR NON-INFRINGEMENT OF ANY THIRD PARTY INTELLECTUAL PROPERTY RIGHTS, OR EQUIVALENTS UNDER THE LAWS OF ANY JURISDICTION. YOU ASSUME THE ENTIRE RISK AS TO THE QUALITY AND PERFORMANCE OF THE SOFTWARE. SHOULD THE SOFTWARE PROVE DEFECTIVE, YOU, AND NOT SANDISK, ITS LICENSORS OR RESELLERS, ASSUME THE ENTIRE COST OF NECESSARY SERVICING, REPAIR, OR CORRECTION.

4. LIMITATION OF LIABILITY. TO THE EXTENT NOT PROHIBITED BY LAW, IN NO EVENT WILL SANDISK OR ITS LICENSORS, OR THEIR RESPECTIVE DIRECTORS, OFFICERS, EMPLOYEES, CONSULTANTS, LICENSORS, LICENSEES OR AFFILIATES, BE LIABLE FOR ANY INDIRECT, INCIDENTAL, SPECIAL, CONSEQUENTIAL, OR EXEMPLARY DAMAGES, ARISING OUT OF OR IN CONNECTION WITH THE DOWNLOAD, DISTRIBUTION, USE OR PERFORMANCE OR NON-PERFORMANCE OF THE SOFTWARE, EVEN IF SANDISK HAS BEEN ADVISED OF THE POSSIBILITY OF SUCH DAMAGES. THE FOREGOING LIMITATIONS OF LIABILITY SHALL APPLY NOTWITHSTANDING ANY FAILURE OF ANY REMEDY PROVIDED FOR HEREUNDER IN ITS ESSENTIAL PURPOSE. IN NO EVENT WILL SANDISK'S OR ITS LICENSORS' TOTAL LIABILITY TO YOU EXCEED THE AMOUNT YOU PAID TO US FOR THE USE OF THE SOFTWARE.

4. The Software is provided with "RESTRICTED RIGHTS." Use, duplication or disclosure by the Government is subject to restrictions as set forth in FAR 52.227-14 and DFARS 252.227-7013 et seq. Use of the Software by the Government constitutes acknowledgement of SanDisk's proprietary rights therein. Contractor or Manufacturer is SanDisk Corporation, 601 McCarthy Blvd. Milpitas, CA 95035.

5. Transfer. If you sell or otherwise transfer the SanDisk product that incorporates the Software as a whole, you may transfer the Software as fully integrated into such product provided that you also supply this Agreement to the purchaser or recipient of the product, at which time all of your rights under this Agreement will immediately cease. Except as stated above, you may not assign or transfer this Agreement in part or in whole, and any attempt to do so shall be void.

6. Termination. We may terminate this Agreement and the license immediately and without notice if you breach it. Upon termination of this Agreement, you must delete or destroy all copies of the Software.

7. High Risk Activities. The Software is not fault-tolerant and is not designed or intended for use in hazardous environments requiring fail-safe performance, or any other application in which the failure of the Software could lead directly to death, personal injury, or severe physical or property damage (collectively, "High Risk Activities"). SANDISK AND ITS LICENSORS DISCLAIM ANY EXPRESS OR IMPLIED WARRANTY OF FITNESS FOR HIGH RISK

ACTIVITIES AND SHALL NOT BE LIABLE FOR ANY LIABILITIES OR DAMAGES ARISING FROM SUCH USE.

8. General. This Agreement contains the entire understanding between the parties with respect to your use of the Software. If any part of this Agreement is found void and unenforceable, it will not affect the validity of the balance of this Agreement, which shall remain valid and enforceable according to its terms. This Agreement is governed by and construed under the laws of the State of California and controlling U.S. federal law without regard to conflicts of laws provisions thereof. The U.N. Convention on Contracts for the International Sale of Goods shall not apply to this Agreement. Any action or proceeding arising from or relating to this Agreement shall be adjudicated in the state or federal courts of Santa Clara County, California, and the parties hereby agree to the exclusive jurisdiction and venue of such courts. You will not remove or export from the United States or re-export from anywhere any part of the Software or any direct product thereof to any country in violation of U.S. Export Administration Regulations, or a successor thereto, except in compliance with and with all licenses and approvals required under applicable export laws and regulations including, without limitation, those of the U.S. Department of Commerce. Any waivers or amendments of this Agreement shall be effective only if made in writing and signed by an authorized representative of each party. You agree that the Licensors are third party beneficiaries of this Agreement to enforce your performance of the terms and conditions of this Agreement. The provisions of Sections 2, 3, 4, 5, 6, 7, 8 and 9 shall survive the termination or expiration of this Agreement.

## FCC Regulation

This device complies with part 15 of the FCC Rules. Operation is subject to the following two conditions:

1. This device may not cause harmful interference, and
2. This device must accept any interference received, including interference that may cause undesired operation.

This equipment has been tested and found to comply with the limits for a Class B digital device, pursuant to Part 15 of the FCC Rules. These limits are designed to provide reasonable protection against harmful interference in a residential installation. This equipment generates, uses, and can radiate radio frequency energy and, if not installed and used in accordance with the instructions, may cause harmful interference to radio communications. However, there is no guarantee that interference will not occur in a particular installation. If this equipment does cause interference to radio or television reception, which can be determined by turning the equipment off and then on, the user is encouraged to try to correct the interference by one or more of the following measures:

1. Increase the separation between the equipment and receiver.
2. Correct the equipment to a different outlet so that the equipment and receiver are on different branch circuits.
3. Consult the dealer or an experienced radio / TV technician for help.