

SAMSUNG



YP-U2J

For Your Safety

Read this manual carefully to ensure proper use of the product and to avoid any danger or physical damage.



WARNING

Failing to heed the product instructions may cause serious injury.

Product Use

Improper use can result in explosion, fire or electric shock.



Do not disassemble, repair or modify this product on your own.



Do not get the product wet or drop it in water.

If the product gets wet, do not switch it on. Contact a Service Center.



Do not place the product in damp, dusty or sooty areas, as it could result in fire or electric shock.



Do not leave the product in areas above 35°C(95°F) (such as a sauna or inside a parked car).

During the summer the temperature inside a car may rise up to 80°C(176°F).

To avoid hearing damage

Using the earphone or headphone for an extended time can cause serious damage to your hearing.

If you are exposed to sound louder than 85db for an extended time, you may adversely affect your hearing.

The louder the sound is, the more seriously damaged your hearing may be (an ordinary conversation is 50 to 60 db and the noise level on a busy road is approximately 80 db).

You are strongly advised to set the volume level to medium (the medium level is usually less than 2/3 of the maximum).

If you feel a ringing in the ear(s), lower the volume or stop using the earphone or headphone.

To avoid a risk of traffic accident

Do not use the earphone while you are driving a automobile or motorcycle, or riding a bicycle, as it can cause a serious accident and, furthermore, is prohibited by law in some areas.

Using the earphone while walking on a road, in particular, on the crosswalk can lead to a serious accident.

For your safety, make sure the earphone cable does not get in the way of your arm or other surrounding objects while you are exercising or a walking.



CAUTION Failure to follow all instructions lead to physical injuries or damage to the product.

Product Use

Take care to avoid product malfunction and physical damage.



When wearing the product around your neck, take care not to exert excessive force on the neck string.



Be careful when using the player with the USB cover removed. The USB connector is sharp and may cause injury.

Management of Important Data



Be sure to backup important data.

Please be aware that we claim no responsibility for damage from data loss due to breakdown, repair or other causes.

Avoid malfunction



Do not cause excessive impact on the product by dropping it. Do not place heavy objects on top of the product.



Prevent any foreign particles or dust from entering into the product.



Do not spray water on the product. Never clean the product with chemical substances such as benzene or thinner, as it may cause fire, electric shock or deteriorate the surface.



Do not place the product near magnetic objects, as it may cause a malfunction.

Contents

Safety Precautions	2
Contents	4

Chapter 1. | Preparation

Checking the Product and

Accessories	7
Checking the Accessories	7
Components	8
Screen Display Information	10
Button Functions	11
Charging the battery	12
Basic Use	13

Chapter 2. | Importing Music Files

Importing Music Files	18
Connecting to your PC	18
Installing Windows Media Player10	19
Transferring Music to your Player	20

Chapter 3. | Listening to Music/FM Radio

Listening to Music	23
Listening to Music	23
Transferring Playlists from WMP10	26
To Play a Playlist	28
To Play a Favorite	29
User Button Custom Function	31
Listening to FM Radio	34
Listening to FM Radio	34
Searching for Frequencies	35
Setting a Frequency	36
To Delete Presets	39
Setting FM Radio	40
Recording	42
Voice Recording	42

Chapter 4. | Settings

Settings	44
Setting Music.....	44
Setting Time.....	46
Setting the Display.....	47
Setting Language	48
Setting the system	49

Chapter 5. | Troubleshooting

System Reset	52
To Upgrade Firmware	53
Troubleshooting	55

Chapter 6. | Appendix

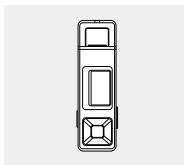
Menu Tree	58
Product Specifications	59
License	60
Safety Information	62
Warranty	64

Chapter 1. | Preparation

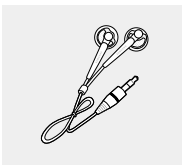
Checking the Product and Accessories	7
Checking the Accessories	7
Components	8
Screen Display Information	10
Button Functions	11
Charging the battery	12
Basic Use	13

Checking the Accessories

The following diagrams are a guide and may differ slightly from the actual product appearance.

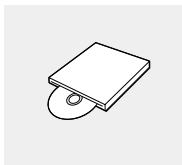


Player



Earphones

White:AH30-00089D
Black:AH30-00090D



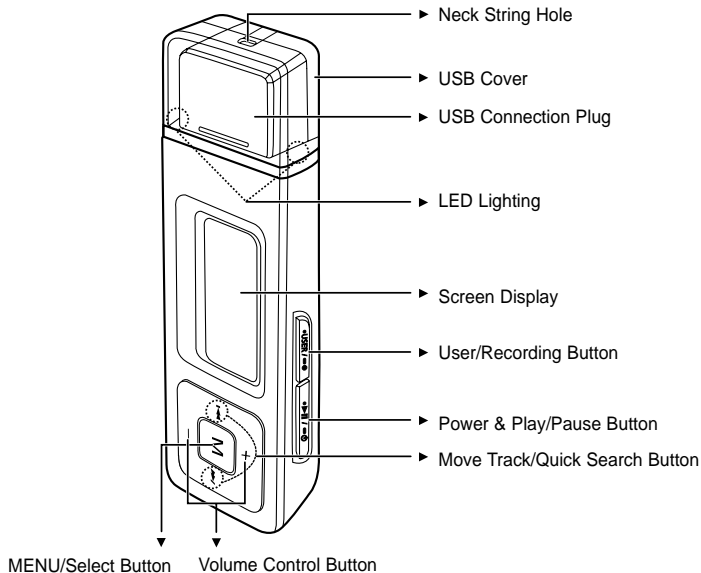
Installation CD

AH80-00130B

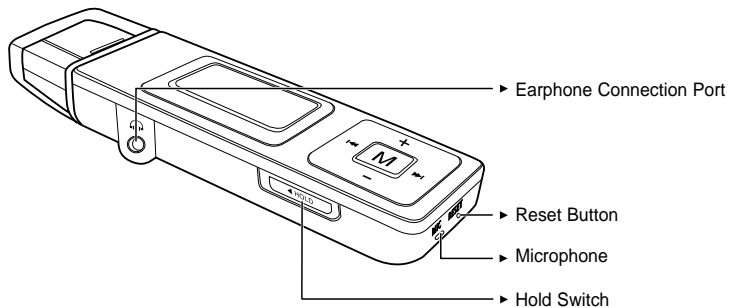
- Design of accessories is subject to change for the purpose of improvement, without notice.

Components

Front, Right Side and Top

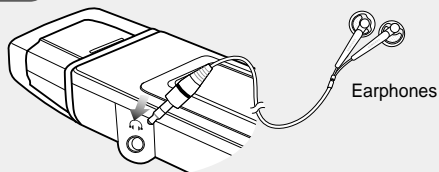


Bottom



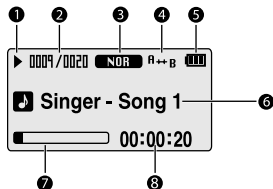
Earphone Connection

▶ Left Side



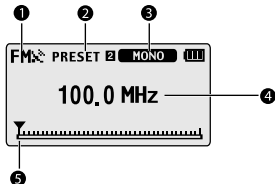
Screen Display Information

Music












- 1 Play/Pause/Stop indicator
- 2 Current Music Number/
Total Number indicator
- 3 Sound Mode indicator
- 4 Repeat Play indicator
- 5 Battery indicator
- 6 Music Title indicator
- 7 Play Status Bar
- 8 Play Time indicator

FM Radio



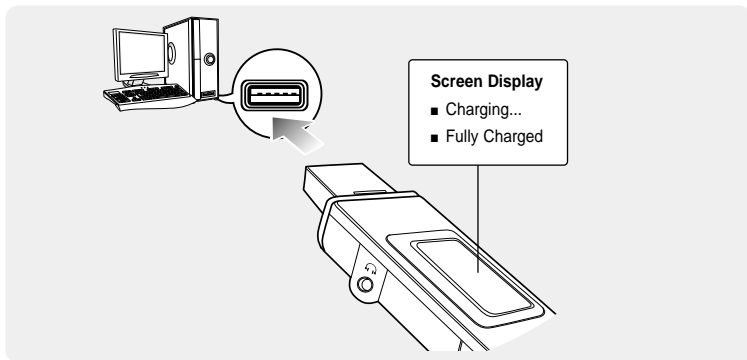
- 1 FM Reception Indicator
- 2 Channel Number Indicator
- 3 Mono/Stereo & MUTE Indicator
- 4 Frequency Indicator
- 5 Frequency Location Indicator

Button Functions

Buttons	Functions and Use
	<ul style="list-style-type: none"> ■ Long press for power on & off. ■ Short press for play/pause.
	<ul style="list-style-type: none"> ■ Long press to start voice recording. ■ Short press to use user setting functions – Repeat AB/DNSe /Play Speed/Play Mode
	<ul style="list-style-type: none"> ■ Long press to move to the menu screen. ■ Short press to move to the navigation list.
	<ul style="list-style-type: none"> ■ Long press to quickly scan tracks. ■ Short press to move to the previous track or play the current track from the beginning.
	<ul style="list-style-type: none"> ■ Long press to quickly scan tracks. ■ Short press to move to next track.
	<ul style="list-style-type: none"> ■ Short press to increase the volume or move to an upper item/menu.
	<ul style="list-style-type: none"> ■ Short press to reduce the volume or move to a lower item/menu.
	<ul style="list-style-type: none"> ■ Push in the direction of the arrow to lock the button functions.
	<ul style="list-style-type: none"> ■ Press with a pointed object to reset.

Charging the battery

Fully charge the battery before using the player for the first time or when it has not been used for a while.



Remove the USB Cover and then connect the USB Connection Plug to the USB port () on your PC.

- It takes about two and a half hours for a full charge although this may vary depending on the PC environment.

Battery Use

- Recharge and store within the temperature range of 5°C~35°C(40°F~95°F).
- Do not overcharge (longer than 12 hours). Excessive charging or discharging may shorten the battery's life.
- Battery life naturally shortens slowly over time as it is a consumable item.
- The USB connection may be unstable if you are using a USB hub. Directly connect to the USB port on your PC.
- For stable charging, run WMP10 after connecting to your PC.

Basic Use

Turning the Power On & Off



Turning the Power On

Press and hold the [•▶|| / -◊] button.

- Power is turned on.

Turning the Power Off

Press and hold the [•▶|| / -◊] button.

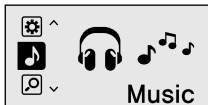
- Power is turned off.




NOTE

- Power is automatically turned off when none of the buttons have been pressed for a preset period of time (Default: 10 seconds) in the pause mode. ▶ Page 46

Playing Music



- 1 Press and hold the [M] button to move to the menu screen.
- 2 Press the [+ , -] button to select <Music> .
- 3 Press the [M] button.
 - Music starts to play.

Basic Use (Continued)

Volume Control



Press the [+ , -] button on the front of the player.

- The Volume Status Bar will appear.
- Press the [+] button to increase the volume or the [-] button to decrease it.

Lock Function



In Hold mode, all buttons are disabled. This function is useful when you are walking or jogging.

- 1** Push the [HOLD] switch on the player in the direction of the arrow.
- 2** Push the [HOLD] switch in the opposite direction of the arrow to release the Lock function.


Searching for Files with <Navigation>

Search easily for files using the <Navigation> function.



Navigation Menu

- <Track> : Allows you to see the list of all files.
- <Artist> : To play by artist
- <Album> : To play by album
- <Genre> : To play by genre
- <Playlist> : Allows you to listen to the playlist transferred to WMP10.
- <Favorite> : Allows you to listen to your favorite music by adding it to <Favorite>.
- <Recorded> : Allows you to listen to the voice recording.

- 1 Press and hold the **[M]** button to move to the menu screen.
- 2 Press the **[+ , -]** button to select <Navigation> .
- 3 Press the **[M]** button.
 - The <Navigation> folder list will appear.
- 4 Press the **[+ , -]** button to select a folder of your choice.
- 5 Use the **[▶▶]** button to move to the file list in the selected folder.
 - Use the **[▶▶]** button to move to the lower step, the **[◀◀]** button to the upper step.
- 6 Press the **[+ , -]** button to select a file of your choice.
- 7 Press the **[M]** button.
 - The selected file will start playing.

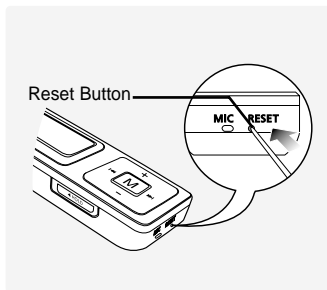


NOTE

- A file without an ID3 Tag (music information) is displayed as [Unknown].

Basic Use (Continued)

Reset Function

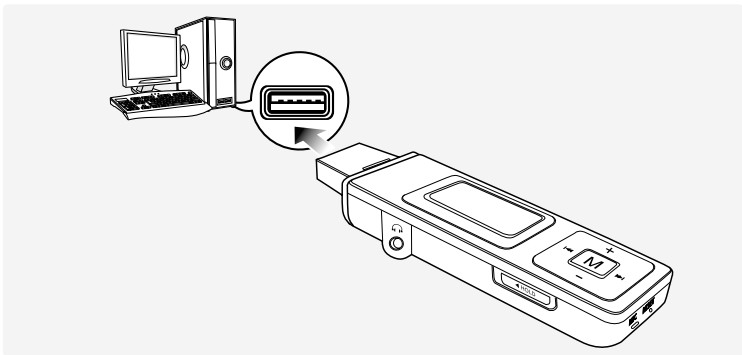


If a product malfunction occurs, you can re-initialize the system by pressing the Reset button. ► P52

Chapter 2. | Importing Music Files

Importing Music Files	18
Connecting to your PC	18
Installing Windows Media Player10.....	19
Transferring Music to your Player	20

Connecting to your PC



Remove the USB Cover then connect the USB Connection Plug to the USB port () on your PC.

- All functions are disabled during connection.

PC Requirements

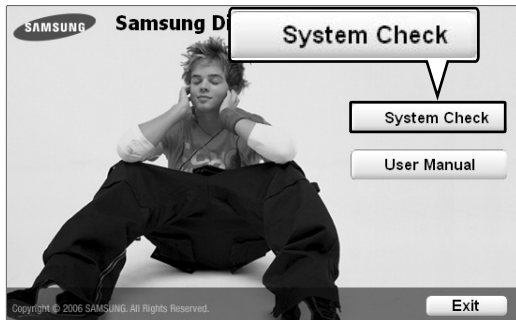
For use in conjunction with a PC, the following is required:

- Pentium 300MHz or higher
- Windows XP Service Pack 1 or higher
- 100MB of free hard disc space
- CD Rom Drive (2X or higher)
- USB Port 2.0
- DirectX 9.0 or higher
- Windows Media Player 10.0 or higher

Installing Windows Media Player10

You cannot transfer files to the player when Windows Media Player 10 is not installed on your PC.

- To install Windows Media Player 10 on your PC, insert the installation CD into the CD-ROM drive of your PC and select the [System Check].



Transferring Music to your Player

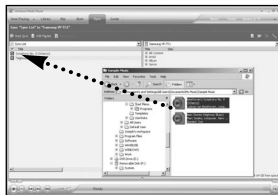
You can download MP3,WMA and secure WMA files using Windows Media Player 10. The files downloaded from WMP10 to the player, will be automatically saved in the Navigation.



1 Connect the player to PC.

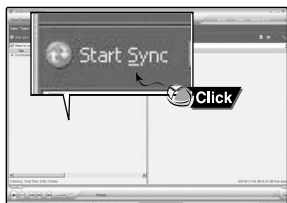
2 Run Windows Media Player10.

- Select [Start] → [Programs] → [Windows Media Player] on the Desktop.



3 Select [Sync] at the top of the screen.

4 When the [Sync] window appears, select the file you want to transfer to the player, drag and drop it to the left [Sync List] window.



5 Make sure the music files you want to download are checked, and then press [Start Sync] at the top of the screen.

- [Synchronized to Device] message will appear on the left window. The downloaded files will appear in the right window under Music folder.



6 You can check the transferred file in the right window.

Chapter 3. | Listening to Music/FM Radio

Listening to Music	23
Listening to Music	23
Transferring Playlists from WMP10	26
To Play a Playlist	28
To Play a Favorite	29
User Button Custom Function	31
Listening to FM Radio	34
Listening to FM Radio	34
Searching for Frequencies	35
Setting a Frequency	36
To Delete Presets	39
Setting FM Radio	40
Recording	42
Voice Recording	42

■ Before you start!


Transfer the music file of your choice from your PC to the player.

Listening to Music

Before you start!

Connect your earphones to the player and turn the power on and check the battery status.



- 1** Press and hold the **[M]** button to move to the menu screen.
- 2** Press the **[+ , -]** button to select **<Music>** .
- 3** Press the **[M]** button.
 - Music starts to play.



NOTE

- The music files compatible with the player are MP3, WMA, secure WMA.
- MP1 or MP2 files which only have a changed extension to MP3, may not play on the player.

To Pause



- 1** Press the **[•▶|| / ◀◻]** button while the music is playing.
 - The music playback will be paused.
- 2** Press the **[•▶|| / ◀◻]** button again.
 - The music will play from the point where it stopped.



NOTE

- Power is automatically turned off when none of the buttons have been pressed for a preset period of time (Default: 10 seconds) in the pause mode. ▶ Page 46

Listening to Music (Continued)

To search within a track

- 1** Press and hold the [⏮] or [⏭] button while the selected track is playing.
 - It searches to the beginning or the end of the track.
- 2** Release the button at the point you wish to start.
 - It starts playing from the point you release the button.

To Play from the beginning of the current track

Press the [⏮] button after 5 seconds of play.

- The current track starts playing from the beginning.

To play the previous/next track

Press the [⏮] button within 5 seconds of play.

- The previous track will start playing.

Press the [⏭] button.

- The next track will start playing.



CAUTION

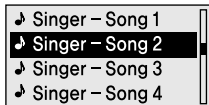
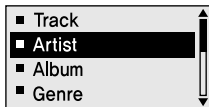
- When playing VBR files, the previous track may not play even if you press the [⏮] button within 5 seconds of the play.



NOTE

- Press the [⏮] button within 5 seconds of play to move to the previous track.


To search a music



Navigation Menu

- <Track> : Allows you to see the list of all files.
- <Artist> : To play by artist
- <Album> : To play by album
- <Genre> : To play by genre
- <Playlist> : Allows you to listen to the playlist transferred to WMP10.
- <Favorite> : Allows you to listen to your favorite music by adding it to <Favorite>.
- <Recorded> : Allows you to listen to the voice recording.

E.g. Searching by Artist

- 1** Press and hold the **[M]** button to move to the Menu screen.
- 2** Press the **[+, -]** button to select <Navigation>  and then press the **[M]** button.
 - The <Navigation> folder list will appear.
- 3** Press the **[+, -]** button to select <Artist> and then press the **[M]** button.
 - The albums for the artist will appear.
- 4** Press the **[+, -]** button to select an album and then press the **[M]** button.
 - The music files for the selected album will appear.
- 5** Press the **[+, -]** button to select a music file to play and then press the **[M]** button.
 - The music will start playing.



NOTE

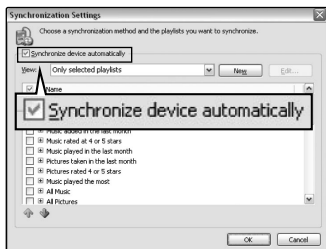
- A file without an ID3 Tag (music information) is displayed as [Unknown].

Transferring Playlists from WMP10



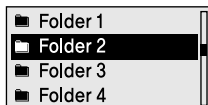
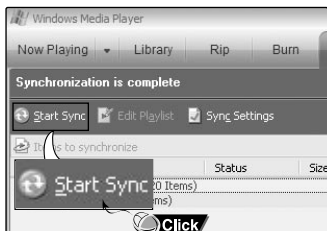
1 To transfer playlists from WMP10, click on “Sync Settings” in the WMP10 menu on your PC.

2 Select <Synchronize device automatically>.



3 Select the playlists you want to sync (transfer) to your player.

- 4** Click on Start Sync in the WMP10 menu. The Playlists will be transferred to your player and will appear in the Playlist menu.



To Play a Playlist

Playlists transmitted from Windows Media Player 10 are displayed in the <Playlist> menu. Please refer to WMP10 for transferring Playlists.

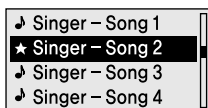
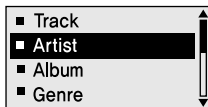


- 1** Press the **[M]** button while the selected music is playing.
 - The <Navigation> folder list will appear.
- 2** Press the **[+, -]** button to select <Playlist> and then press the **[M]** button.
 - The <Playlist> folder list will appear.
- 3** Press the **[+, -]** button to select a folder of your choice and then press the **[M]** button.
- 4** Press the **[+, -]** button to select a music file to play and then press the **[M]** button.
 - The music will start playing.

To Play a Favorite

You can easily listen to your favorite music by adding it to <Favorite>.

To add files to Favorite



1 Press the **[M]** button while a music is playing.

- The file list of the folder will appear.

2 Press the **[|◀◀, ▶▶|, +, -]** buttons to add files to <Favorite> and then press the **[●USER/◼●]** button.

- ★ is displayed in front of the selected files and the files are added to <Favorite>.

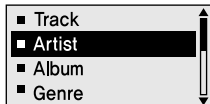



NOTE

- To delete files from Favorite, select the ★ files to delete and press the **[●USER/◼●]** button again.

To Play Favorite (Continued)

To Play <Favorite>

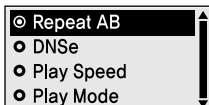


- 1 Press and hold the **[M]** button to move to the Menu screen.
- 2 Press the **[+, -]** button to select <Navigation>  and then press the **[M]** button.
 - The <Navigation> folder list will appear.
- 3 Press the **[+, -]** button to select <Favorite> and then press the **[M]** button.
- 4 Press the **[+, -]** button to select a music file to play and then press the **[M]** button.
 - The music will start playing.

User Button - Custom Function

The user button enables you to select from one of four preset custom settings.

To set desired User Button Mode



Use the [● USER/ ●●] button during playback for simple mode change.

- 1 Press and hold the [M] button to move to the menu screen.
- 2 Press the [+ , -] button to select <Settings> and then Press the [M] button.
 - The Settings menu will appear.
- 3 Press the [+ , -] button to select <User Button Mode> and then press the [M] button.
 - The User Button Mode menu will appear.
- 4 Press the [+ , -] button to select the desired user button mode and then press the [M] button.

- <Repeat AB> : Sets section repeat.
- <DNSe> : Selects the sound mode.
- <Play Speed> : Adjusts the playback speed between fast and slow.
- <Play Mode> : Selects the repeat playback mode.

User Button - Custom Function (Continued)

To set Section Repeat



This function enables you to listen to specific parts of a track repeatedly. Recommended for language learning.

- 1** Set the User Button Mode to <Repeat AB> and play a file of your choice.
- 2** Press the [● USER/ ●●] button at the beginning of the section you want to repeat.
 - The starting point is set and <A ↔ > will appear in the screen display window.
- 3** Press the [● USER/ ●●] button again to set the ending of the section you want to repeat.
 - <A ↔ B> will appear on the screen and the specified section starts to play repeatedly.

To cancel Section Repeat

Press the [● USER/ ●●] button again during Section Repeat.

- Section Repeat will be canceled.



NOTE

- Section Repeat will be automatically canceled in the following cases.
 - When the [◀◀] or [▶▶] button is pressed, moving to the previous or next track.
 - The starting point of the section repeat is set but the ending point is not set until the current track ends.

To use the DNSe button

For a description of DNSe, see page 45.

Set the User Button Mode to <DNSe> and press the [● USER/ ●●] button.

- DNSe mode changes in the following order each time the button is pressed <NORMAL> <ROCK> <HOUSE> <DANCE> <JAZZ> <BALLAD> <R&B> <CLASSICAL> <USER EQ> <3D USER> <3D STUDIO> <3D STAGE> <3D CLUB>.

To use the Play Speed button

Set the User Button Mode to <Play Speed> and press the [● USER/ ●●] button.

- Playback speed changes in the following order each time the button is pressed <x0.7> <x0.8> <x0.9> <x1.0> (Normal speed) <x1.1> <x1.2> <x1.3>. (The higher the number is, the faster the playback speed is.)

To use the Play Mode button

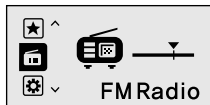
Set the User Button Mode to <Play Mode> and press the [● USER/ ●●] button.

- Playback mode changes in the following order each time the button is pressed <Normal> <Repeat All> <Repeat One> <Shuffle All>.


Listening to FM Radio

Before you start!

- Connect your earphones to the player and turn the power on and check the battery status.



1 Press and hold the **[M]** button to move to the menu screen.

2 Press the **[+ , -]** button to select **<FM Radio>**  and then press the **[M]** button.

- FM radio reception will start.

To use the mute function

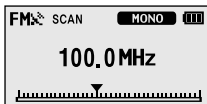
Press the **[•▶▶ / ◀◀]** button while listening to FM radio.

- The MUTE message will appear and no sound is emitted.
- To turn the sound back on, press the **[•▶▶ / ◀◀]** button again.

Searching for Frequencies

Frequencies can only be searched in FM Radio mode.

To automatically search for frequencies



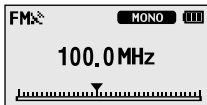
1 Press the [M] button to select Manual tuning Mode.

- The <PRESET> message will disappear from the screen display and go into manual mode.

2 Press and hold the [◀◀] or [▶▶] button and then release.

- The frequencies are automatically searched.
To stop the search when you reach a desired frequency, press the [◀◀] or [▶▶] button again.

To manually search for frequencies



1 Press the [M] button to select Manual tuning Mode.

- The <PRESET> message will disappear from the screen display and go into manual mode.

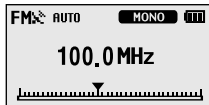
2 Press the [◀◀] or [▶▶] button.

- Moves to the next frequency whenever the button is pressed.

Setting a Frequency

Up to 20 frequencies can be stored.

To automatically set frequencies



- 1** Press and hold the **[M]** button to move to the menu screen.
- 2** Press the **[+ , -]** button to select **<Settings>** and then press the **[M]** button.
 - The Settings menu appears.
- 3** Press the **[+ , -]** button to select **<FM Radio>** and then press the **[M]** button.
 - The FM Radio menu appears.
- 4** Press the **[+ , -]** button to select **<Auto Preset>** and then press the **[M]** button.
 - The Auto Preset Confirm window will appear.
- 5** Press the **[+ , -]** button to select **<Yes>** and then press the **[M]** button.
 - The **<AUTO>** message appears and the first 20 frequencies are automatically preset.

To cancel during setting

To cancel during <Auto Preset> setting, press the [◀◀] or [▶▶] button.

- The auto preset setting is canceled and frequencies set up to then are stored.



NOTE

- To set <Auto Preset> again after setting preset, existing frequencies are deleted entirely and you can reset from start.



CAUTION

- Always connect your earphones to the player when searching or setting frequencies. The earphones are used as antennas to receive FM radio reception.
-

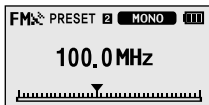
Setting a Frequency (Continued)

To manually set frequencies



- 1 Press the [**M**] button to select **Manual tuning Mode**.
 - The <PRESET> message will disappear from the screen display and go into manual mode.
- 2 Press the [**◀◀**] or [**▶▶**] button to search for frequencies to preset.
- 3 Press the [**• USER/ •**] button.
 - The <Save?> message will appear.
- 4 Press the [**◀◀**] or [**▶▶**] button to specify preset numbers and then press the [**M**] button.
 - The <SAVED!!> message will appear and the selected frequency is set to the specified preset number.

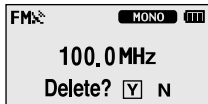
To search for frequencies in PRESET mode



- 1 Press the [**M**] button and select <Preset Mode>.
 - The <PRESET> message will appear on the screen display and go into preset mode.
- 2 Press the [**◀◀**] or [**▶▶**] button.
 - The preset number is selected and you can listen to the stored radio frequency.

To Delete Presets

Before you start! ■ Follow the steps below to delete frequencies while listening to FM radio.



- 1** Press the **[M]** button and select **<Preset Mode>**.
 - The **<PRESET>** message will appear on the screen display and go into the preset mode.
- 2** Press the **[|◀◀]** or **[▶▶|]** button to search for preset frequencies to delete.
- 3** Press the **[●USER/◀●]** button.
 - The **<Delete?>** message will appear.
- 4** Press the **[|◀◀]** or **[▶▶|]** button to select **<Y>** and then press the **[M]** button.
 - The **<DELETED!!>** message will appear and the selected preset number is deleted.
 - To cancel preset number delete, select **<N>**.

Setting FM Radio

To set FM region

- ⊙ Korea/USA
- Japan
- Other Countries

- 1** Press and hold the **[M]** button to move to the menu screen.
- 2** Press the **[+ , -]** button to select **<Settings>** and then press the **[M]** button.
 - The Settings menu appears.
- 3** Press the **[+ , -]** button to select **<FM Radio>** and then press the **[M]** button.
 - The FM Radio menu appears.
- 4** Press the **[+ , -]** button to select **<FM Region>** and then press the **[M]** button.
 - The FM Region menu appears.
- 5** Press the **[+ , -]** button to select the FM region and then press the **[M]** button.
 - You can select from **<Korea/USA>** **<Japan>** **<Other Countries>**.

**NOTE**

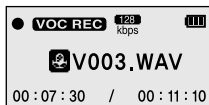
- Frequency range by region
 - Korea/USA: Search for FM frequencies in 100 kHz increments between 87.5 MHz~108.0 MHz.
 - Japan: Search for FM frequencies in 100 kHz increments between 76.0 MHz~108.0 MHz.
 - Other Countries: Search for FM frequencies in 50 kHz increments between 87.5 MHz~108.0 MHz.
- If you change the FM region, the previously stored radio frequencies are removed.

To set FM sensitivity

- 
- ⦿ High
 - Middle
 - Low

- 1** Press and hold the **[M]** button to move to the menu screen.
- 2** Press the **[+ , -]** button to select **<Settings>** and then press the **[M]** button.
 - The Settings menu appears.
- 3** Press the **[+ , -]** button to select **<FM Radio>** and then press the **[M]** button.
 - The FM Radio menu appears.
- 4** Press the **[+ , -]** button to select **<FM Search Level>** and then press the **[M]** button.
 - The FM Search Level menu appears.
- 5** Press the **[+ , -]** button to select the search level and then press the **[M]** button.
 - You can select from **<High>** **<Middle>** and **<Low>**.
 - The higher FM search level is, the more frequencies can be received.

Voice Recording



1 Press and hold the [●USER/●●] button.

- Voice recording will start as soon as the file name is displayed

2 Press the [●USER/●●] button again to end recording.

- After the confirmation message of recording completion appears, the recording is automatically stored in <VOICE> folder.

File names during recording

Recording files are specified as "VNNN.WAV" during recording.

V means it is a voice-recording file, NNN defines the recording number, and WAV is the file format.

For example, file name V003.WAV is the third voice-recording file to be saved.



NOTE

- To listen to saved recording files, use the Navigation (Search) function. ► Page 15.
- FM radio stations cannot be recorded.



CAUTION

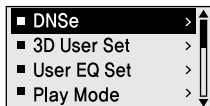
- Do not place the microphone too close or too far away during recording, as this can affect the recording quality.
- Voice recording does not perform properly when the battery is low.

Chapter 4. | Settings

Settings	44
Setting Music.....	44
Setting Time.....	46
Setting the Display.....	47
Setting Language	48
Setting the system.....	49

Setting Music

You can set detailed settings for music playback.



- 1** Press and hold the **[M]** button to move to the menu screen.
- 2** Press the **[+ , -]** button to select **<Settings>** and then press the **[M]** button.
 - The Settings menu appears.
- 3** Press the **[+ , -]** button to select **<Music>** and then press the **[M]** button.
 - The Music menu appears.
- 4** Use the **[+ , -]** and **[M]** buttons to set necessary functions.

**NOTE**

- Button functions to use during setting.
 - Press the **[◀◀]** button to move to the previous item.
 - Press the **[▶▶]** button to move to the next item.
 - Press the **[+ , -]** button to move up or down through the current menu.
 - Press the **[M]** button to select or save the menu.
- If there is no button operation for about 30 seconds in the Settings screen, settings will be canceled and you will be returned to the previous mode.

- **DNSe** : You can select a suitable sound for each music genre. Select either <3D-User> <3D-Studio> <3D-Stage> <3D-Club> <Normal> <Rock> <House> <Jazz> <Dance> <Ballad> <R&B> <Classical> or <User EQ>.
- **3D User Set** : Sets 3D sound effect and bass enhancement.
3D can be set between 00~05 levels, and Bass Enhance between 00~03 levels.
To use 3D User Set, select <3D User> from <DNSe>.
- **User EQ Set** : Directly select a sound effect (EQ). To use User EQ, select <User EQ> from <DNSe>.
- **Play Mode** : Select playback mode such as repeat settings.
Select from <Normal> <Repeat All> <Repeat One> <Shuffle All> and <Intro>.
- **Play Speed** : Adjust the playback speed of music/voice recording. Select either <x0.7> <x0.8> <x0.9> <x1.0> (Normal speed) <x1.1> <x1.2> or <x1.3>. (The higher the number is, the faster the playback speed is.)
- **Skip Interval** : Set the playback interval when you press the [◀◀] or [▶▶] button during playback. Select either <1 Track> <03 Sec> <05 Sec> <07 Sec> <10 Sec> <30 Sec> or <01 Min>.
- **Search Speed** : Set the search speed when you press and hold the [◀◀] or [▶▶] button during playback. Select either <01 Sec> <03 Sec> <05 Sec> <10 Sec> <15 Sec> <20 Sec> <30 Sec> or <01 Min>.
- **Intro Time** : When you select the Intro function from <Play Mode>, the beginning of all files will be played back for the seconds you set. Select either <10 Sec> <20 Sec> <30 Sec> or <60 Sec>.

**NOTE**

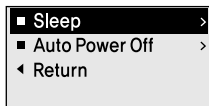
- For a VBR file, the Skip Interval and Search Speed may not be exact.

- **What is DNSe?**

DNSe is a sound effect function for MP3 players developed by Samsung and adds a 3D surround sound effect to the music.

Setting Time

You can set functions related to the Sleep Timer and Auto Power Off.



- 1 Press and hold the **[M]** button to move to the menu screen.
- 2 Press the **[+ , -]** button to select **<Settings>** and then press the **[M]** button.
 - The Settings menu appears.
- 3 Press the **[+ , -]** button to select **<Time>** and then press the **[M]** button.
 - The Time menu appears.
- 4 Use the **[+ , -]** and **[M]** buttons to set necessary functions.

- **<Sleep>** : Turns off power automatically after the preset time. Select either **<Off>** **<15 Min>** **<30 Min>** **<60 Min>** **<90 Min>** or **<120 Min>**.
- **<Auto Power Off>** : Automatically turns power off when there is no button operation after the preset time in the pause mode. Select either **<Off>** **<05 Sec>** **<10 Sec>** **<15 Sec>** **<30 Sec>** **<01 Min>** or **<03 Min>**.

Setting the Display

You can set functions related to scrolling, backlight and other screen displays.

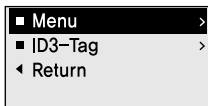


- 1 Press and hold the **[M]** button to move to the menu screen.
- 2 Press the **[+ , -]** button to select **<Settings>** and then press the **[M]** button.
 - The Settings menu appears.
- 3 Press the **[+ , -]** button to select **<Display>** and then press the **[M]** button.
 - The Display menu appears.
- 4 Use the **[+ , -]** and **[M]** buttons to set necessary functions.

- **<Scroll Speed>** : Sets the scroll speed to adjust the speed of the track title movement. Select from **<Slow>** **<Normal>** and **<Fast>**.
- **<Backlight Time>** : Sets to automatically turn off the backlight after there is no button operation during the preset time. Select either **<05 Sec>** **<15 Sec>** **<30 Sec>** **<60 Sec>** or **<Always On>**.
- **<Contrast>** : Adjusts the brightness of the screen display window. Select from 00 to 10.
- **<Display Time>** : Check the time in the desired format during music playback. Select either **<Play Time>** **<Remain Time>** or **<Total Time>**.
- **<LED Effect>** : Select LED backlight effect. Select either **<Off>** **<Button>** (turns on when a button is pressed) **<Random>** or **<Always on>**.

Setting Language

Set the language for the menu and track information (ID3-Tag).



- 1 Press and hold the **[M]** button to move to the menu screen.
- 2 Press the **[+ , -]** button to select **<Settings>** and then press the **[M]** button.
 - The Settings menu appears.
- 3 Press the **[+ , -]** button to select **<Language>** and then press the **[M]** button.
 - The Language menu appears.
- 4 Use the **[+ , -]** and **[M]** buttons to set necessary functions.

- **<Menu>** : Set the menu language. Select from <Chinese(S)> <Chinese(T)> <Dutch> <English> <French> <German> <Hungarian> <Italian> <Japanese> <Korean> <Polish> <Portuguese> <Russian> <Spanish> and <Swedish>.
- **<ID3-Tag>** : Set the track information language. Select from <Afrikaans> <Basque> <Catalan> <Chinese(S)> <Chinese(T)> <Czech> <Danish> <Dutch> <English> <Estonian> <Finnish> <French> <German> <Greek> <Hrvatski> <Hungarian> <Icelandic> <Italian> <Japanese> <Korean> <Norwegian> <Polish> <Portuguese> <Romany> <Russian> <Slovak> <Slovene> <Spanish> <Swedish> <Thai> <Turkish> and <Vietnamese>.



NOTE

- The supported languages can be changed or added.

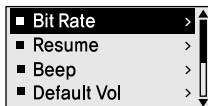
What is ID3-Tag?

This is what is attached to an MP3 to carry information relevant to the file, such as the title, artist, album, year, genre and a comment field.

- When you have made a change of ID-Tag language setting, turn off the product and restart it so the change can be applied.

Setting the System

You can set the Default Volume, Resume and Beep Sound functions.



- 1** Press and hold the **[M]** button to move to the menu screen.
- 2** Press the **[+ , -]** button to select **<Settings>** and then press the **[M]** button.
 - The Settings menu appears.
- 3** Press the **[+ , -]** button to select **<System>** and then press the **[M]** button.
 - The Sytem menu appears.
- 4** Use the **[+ , -]** and **[M]** buttons to set necessary functions.

Setting the System (Continued)

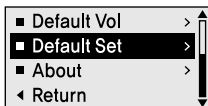
- **<Bit Rate>** : Selects the recording quality. Select either <32kbps> <64kbps> or <128kbps> (the higher the number is, the better audio quality and the larger the file size becomes).
- **<Resume>** : Specifies the starting point to restart playback after the music you are listening to is stopped. If set to <Off>, the last file listened to will play from the beginning. If set to <On>, the last file listened to will play from the point where last played.
- **<Beep>** : Sets the beep sound for button operations to on or off. Select either <On> or <Off>.
- **<Default Vol>** : The default volume can be set from 00 to 30(Max).If the power is turned on again after adjusting the volume above the default volume, music is played at default volume.
If the power is turned on again after the volume was set within the default volume, the music is played at the previously played volume.
- **<Default Set>** : Returns all settings to the default value.
- **<About>** : Checks the firmware version, number of stored files, remaining memory.



■ Regarding the Built-In Memory

NOTE The actual built-in memory available is slightly less than indicated as the internal firmware uses a portion of the memory.

Default Settings



Press the [+ , -] button to select either <Yes> or <No> and then press the [M] button.

- **<Yes>** : Initializes all settings to default.
- **<No>** : Cancels default settings.

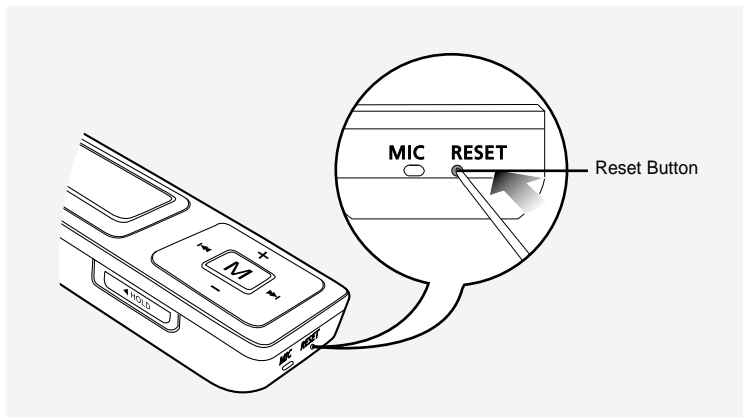


Chapter 5. | Troubleshooting

System Reset.....	52
To Upgrade Firmware	53
Troubleshooting.....	55

System Reset

If a product malfunction occurs, you can re-initialize the system by pressing the Reset button.



Press the Reset Button at the bottom of the product with a pointed object such as a safety clip.

- The system will be initialized.
- The Reset function will not delete data stored in the built-in memory.

To Upgrade Firmware

Future upgrades may be available for this player to enhance performance and compatibility.

- 1** Connect to <http://www.samsung.com>, select [SUPPORT] → [DOWNLOAD CENTER] and then select your product.
- 2** When the product page appears, select [Firmware] below the model name to download the latest firmware.
- 3** Uncompress the downloaded file in a folder.
- 4** Run Setup.exe and follow the instructions on the screen for installation.
 - If previous version of firmware updater has been installed on your PC, overwrite the firmware files (bootmanager.sb,resource.bin,StmpSys.sb,UsbMsc.sb) in "C:\Program Files\Samsung\YP-U2J" folder.
- 5** Double-click YP-U2J Updater icon on the Desktop.
 - Select [Install Player USB Driver] that appears when you insert the Installation CD into the CD-ROM drive. When the driver is installed, YP-U2J Updater icon is created on the Desktop.

To Upgrade Firmware (Continued)

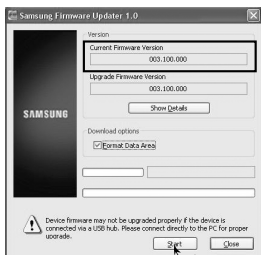
6 Connect the YP-U2J to your PC.

7 Check the current version and click the [Start] button of the Firmware Updater program to upgrade the Firmware.

- If you select "Format data area" and start the update, all the data saved in YP-U2J will be deleted. Please backup your important data on your PC.
If you do not want your data to be deleted, do not select "Format data area".

8 Confirm the version of the current firmware.

9 Click the [Close] button.



Troubleshooting

If a malfunction is experienced, check the following.

If the problem persists, contact a Samsung Service Center near you.

Problem	Check points & Troubleshooting
Power will not turn on.	<ul style="list-style-type: none">■ Power will not turn on if the battery is fully discharged. Recharge the battery and turn the power on again.■ Press the Reset Button.
Buttons do not work.	<ul style="list-style-type: none">■ Check if the [HOLD] switch is in the direction of the arrow position.■ Check if you pressed the right button, then press again.■ Press the Reset Button.
The screen will not turn on.	<ul style="list-style-type: none">■ If set to <Backlight Time> in <Settings> → <Display>, the screen may be turned off. Press any button to turn the screen back on.■ The screen may not be visible under direct sunlight.
Power is turning off.	The power is automatically turned off when the battery is fully discharged. Recharge the battery.
Battery life differs from the Manual.	<ul style="list-style-type: none">■ The battery life may vary, depending on the settings of EQ and LED effects.■ Product life may be shortened when left for extended periods in low or high temperatures.
Playing is disabled.	<ul style="list-style-type: none">■ Check if the available file has been saved in the memory.■ Check if the music file is damaged.■ Check if there is enough battery power.
File upload is disabled.	<ul style="list-style-type: none">■ Check to see if the USB connection plug is properly connected and reconnect it.■ Check if the memory is full.■ Press the Reset button.

Troubleshooting (Continued)

Problem	Check points & Troubleshooting
Files or Data are Missing.	Check if the USB connection plug has been disconnected during file or data transmission. If this is the case, it may cause serious damage not only to files/data but also to the product. You have to be extra cautious as Samsung is not held responsible for data loss.
Abnormal Play Time Display during Play.	Check if the file is in VBR (Variable Bit Rate) format.
Abnormal Display of File Name.	Move to <Settings> → <Language> → <ID3-Tag> in the Menu screen and set an appropriate language.
Program Malfunction	Please check if the PC requirements are met.
Connection to a PC is disabled.	<ul style="list-style-type: none">■ Press <Start> on the desktop and run Windows Update. Select critical updates and service packs and start update. Restart your PC and reconnect the player.
The backlight does not turn on.	<ul style="list-style-type: none">■ Check the backlight time.■ Check the battery.
The product is hot.	Heat may be generated during recharging. This has no effect on the product life or functions.

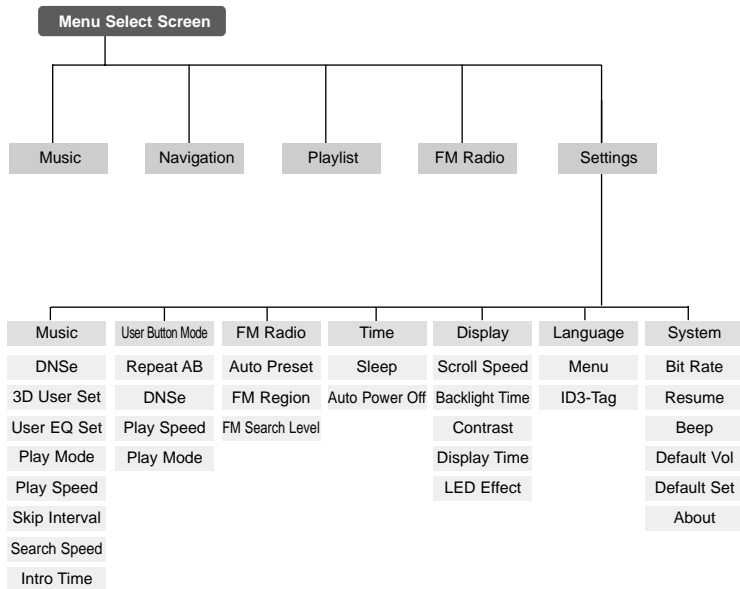


Chapter 6. | Appendix

Menu Tree	58
Product Specifications	59
License	60
Safety Information	62
Warranty	64

Menu Tree

You can quickly view the menu structure.



Product Specifications

Model Name		YP-U2J
Power		3.7V (Li-Polymer Rechargeable)
Built-in Battery Power		280mAh
File	Compatibility	MPEG1/2/2.5 Layer3(8kbps~320kbps, 8kHz~48kHz) WMA
Supported Number of folders and Files		Folder: Max. 200 File: Max. 2000
Earphone Output		20mW(16Ω)
Output Frequency Range		20Hz~20KHz
Noise Ratio		88dB with 20KHz LPF(based on 1KHz 0dB)
Play Time		13 hours of music play (MP3 128kbps, Volume 20, Normal sound mode)
Temperature Range for Operation		- 5~35°C (23~95°F)
Case		Plastic
Weight		0.99 oz
Dimensions(WxHxD)		0.96" X3.44" X0.5"
FM Frequency		87.5~108.0MHz
FM Signal to Noise Ratio		55dB
FM T.H.D		1%
FM Useable Sensitivity		10dBμ

- The contents of this Manual are subject to change without prior notice for further improvement.

License

The product unit accompanying this user manual is licensed under certain intellectual property rights of certain third parties. In particular, this product is licensed under the following US patents : 5,991,715, 5,740,317, 4,972,484, 5,214,678, 5,323,396, 5,539,829, 5,606,618, 5,530,655, 5,777,992, 6,289,308, 5,610,985, 5,481,643, 5,544,247, 5,960,037, 6,023,490, 5,878,080, and under US Published Patent Application No. 2001-44713-A1.

This license is limited to private non-commercial use by end-user consumers for licensed contents. No rights are granted for commercial use. The license does not cover any product unit other than this product unit and the license does not extend to any unlicensed product unit or process conforming to ISO/IEC 11172-3 or ISO/IEC 13818-3 used or sold in combination with this product unit. The license only covers the use of this product unit to encode and/or decode audio files conforming to the ISO/IEC 11172-3 or ISO/IEC 13818-3. No rights are granted under this license for product features or functions that do not conform to the ISO/IEC 11172-3 or ISO/IEC 13818-3.

[illegible]

Safety Information

FCC

This device complies with part 15 of the FCC Rules. Operation is subject to the following two conditions:

(1) This device may not cause harmful interference, and (2) this device must accept any interference received, including interference that may cause undesired operation.

Caution: Any changes or modifications in construction of this device which are not expressly approved by the party responsible for compliance could void the user's authority to operate the equipment

Note: This equipment has been tested and found to comply with the limits for a Class B digital device, pursuant to part 15 of the FCC Rules. These limits are designed to provide reasonable protection against harmful interference in a residential installation. This equipment generates, uses and can radiate radio frequency energy and, if not installed and used in accordance with the instructions, may cause harmful interference to radio communications. However, there is no guarantee that interference will not occur in a particular installation.

If this equipment does cause harmful interference to radio or television reception, which can be determined by turning the equipment off and on, the user is encouraged to try to correct the interference by one or more of the following measures:

- ◆ Reorient or relocate the receiving antenna.
- ◆ Increase the separation between the equipment and receiver.
- ◆ Connect the equipment to an outlet on a circuit different from that to which the receiver is connected.
- ◆ Consult the dealer or an experienced radio/TV technician for help.

FCC

Any changes or modifications not expressly approved by the grantee of this device could void the user's authority to operate the device.

Compliance

This product conforms to the following Council Directive:

- ◆ Directive 89/336/EEC, 92/31/EEC(EMC)

Declaration of Conformity

Name: Samsung Electronics Co., Ltd
Address: 416, Maetan-3Dong, Paldal-Gu,
Suwon City, Kyungki-Do, Korea 442-742
declares under its sole responsibility that the product
Trade Name: Samsung Electronics Co., Ltd
Model Number: YP-U2J
has been tested according to the
FCC/CISPR22/95 requirements for Class B
devices and found compliant with the following
standards

EMI/EMC: AnSI C63.4 1992, FCC Part 15
Subpart B

This device complies with part 15 of the FCC
Rules.

Operation is subject to the following two
conditions:

- 1.This device may not cause harmful
interference, and
- 2.This device must accept any interference
received, including interference that may
cause undesirable operation.

Party Responsible for Product Compliance

Samsung Electronics America
QA Lab.
3351 Michelson Dr. Suite #290
Irvine, CA92612

Warranty

Samsung warrants this product as free of defects in material, design and workmanship for a period of twelve(12) months from the original date of purchase.

If during the period of warranty this product proves defective under normal use and service, you should return the product to the retailer from whom it was originally purchased. The liability of Samsung and its appointed maintenance company is limited to the cost of repair and/or replacement of the unit under warranty. Return of the product for defective reasons should be to the original purchaser; however, Samsung Authorized Dealers and Authorized Service Centers will comply with the warranty on the terms issued to purchasers in the country concerned. For further information relating to the Authorized Service Centers contact; 1-800-SAMSUNG (1-800-726-7864) www.samsung.com

WARRANTY CONDITIONS:

- 1.The warranty is only valid when the warranty card is properly completed, and upon presentation of the proof of purchase consisting of original invoice or sales slip confirmation, indicating the date of purchase, dealer's name, model, serial No. and product number.
Samsung reserves the right to refuse warranty service if this information has been removed or changed after the original purchase of the product from the dealer.
- 2.Samsung's obligations are to the repair of the defective part, and at its discretion, replacement of the product (service exchange unit).
- 3.Warranty repairs must be carried out by an Authorized Samsung Dealer/Service Center. No reimbursement will be made for repairs carried out by non Samsung Centers, and warranty coverage will not be valid for any repairs or damage caused by such repairs.
- 4.Repair or replacement under the terms of this warranty does not give right to extension to or a new starting of the period of warranty. Repair or direct replacement under the terms of this warranty may be fulfilled with functionally equivalent service exchange units.

5. The warranty is not applicable in cases other than defects in material, design and workmanship. The warranty does not cover the following:

- ◆ Periodic checks, maintenance, repair and replacement of parts due to normal wear and tear.
- ◆ Abuse or misuse, including but not solely limited to the failure to use this product for its normal purpose or in accordance with Samsung's instructions usage and maintenance.
- ◆ Use of the product in conjunction with accessories not approved by Samsung for use with this product.
- ◆ Failure of the product arising from incorrect installation or use not consistent with technical or safety standards in current force, or failure to comply with product manual instructions.
- ◆ Accidents, Acts of God or any cause beyond the control of Samsung caused by lightning, water, fire, public disturbances and improper ventilation.

◆ Unauthorized modifications carried out for the product to comply with local or national technical standards in countries for which the Samsung product was not originally designed.

◆ Repairs performed by non-authorized service centers such as opening of the product by a non-authorized person.

◆ The model, serial No. and product number on the product has been altered, deleted, removed or made illegible.

6. This warranty does not affect the consumer's statutory rights nor the consumers rights against the dealer from their purchase/sales agreement.

Warranty

THERE ARE NO EXPRESS WARRANTIES OTHER THAN THOSE LISTED AND DESCRIBED ABOVE, AND NO WARRANTIES WHETHER EXPRESS OR IMPLIED, INCLUDING, BUT NOT LIMITED TO, ANY IMPLIED WARRANTIES OF MERCHANTABILITY OR FITNESS FOR A PARTICULAR PURPOSE, SHALL APPLY AFTER THE EXPRESS WARRANTY PERIODS STATED ABOVE, AND NO OTHER EXPRESS WARRANTY OR GUARANTY GIVEN BY ANY PERSON, FIRM OR CORPORATION WITH RESPECT TO THIS PRODUCT SHALL BE BINDING ON SAMSUNG, SAMSUNG SHALL NOT BE LIABLE FOR LOSS OF REVENUE OR PROFITS, FAILURE TO REALIZE SAVINGS OR OTHER BENEFITS, OR ANY OTHER SPECIAL, INCIDENTAL OR CONSEQUENTIAL DAMAGES CAUSED BY THE USE, MISUSE OR INABILITY TO USE THIS PRODUCT, REGARDLESS OF THE LEGAL THEORY ON WHICH THE CLAIM IS BASED, AND EVEN IF SAMSUNG HAS BEEN ADVISED OF THE POSSIBILITY OF SUCH DAMAGES. NOR SHALL RECOVERY OF ANY KIND AGAINST SAMSUNG BE GREATER IN AMOUNT THAN THE PURCHASE PRICE OF THE PRODUCT SOLD BY SAMSUNG AND CAUSING THE ALLEGED DAMAGE. WITHOUT LIMITING THE FOREGOING, PURCHASER

ASSUMES ALL RISK AND LIABILITY FOR LOSS, DAMAGE OR INJURY TO PURCHASER AND PURCHASER'S PROPERTY AND TO OTHERS AND THEIR PROPERTY ARISING OUT OF THE USE, MISUSE OR INABILITY TO USE THIS PRODUCT SOLD BY SAMSUNG NOT CAUSED DIRECTLY BY THE NEGLIGENCE OF SAMSUNG. THIS LIMITED WARRANTY SHALL NOT EXTEND TO ANYONE OTHER THAN THE ORIGINAL PURCHASER OF THIS PRODUCT, IS NONTRANSFERABLE AND STATES YOUR EXCLUSIVE REMEDY.

Some states do not allow limitations on how long an implied warranty lasts, or the exclusion or limitation of incidental or consequential damages, so the above limitations or exclusions may not apply to you. This warranty gives you specific legal rights, and you may also have other rights which vary from state to state. This product is for personal use only, and is only for use in compliance with the limitations of copyright and other laws. To obtain warranty service, please contact SAMSUNG at: Samsung Electronics America, Inc. 400 Valley Road, Suite 201 Mount Arlington, NJ 07856
1-800-SAMSUNG (1-800-726-7864) www.samsung.com
081299

The Samsung logo, consisting of the word "SAMSUNG" in a bold, sans-serif font, is enclosed within a white, horizontally-oriented oval shape.

If you have any questions or comments relating to Samsung products,
please contact the SAMSUNG customer care center.

Samsung Electronics America, Inc.
1-800-SAMSUNG (7267864)
www.samsung.com

REV 0.0