

Prower Pro UPS
1000/1500/2000

1 Inspection

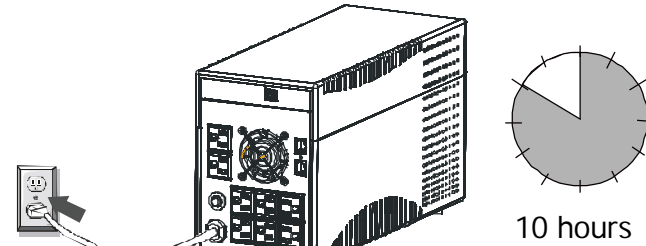
Remove the UPS from its packaging and inspect it for damage that may have occurred during shipping. If any damage is discovered, repack the unit and return it to the place of purchase.

2 Placement

Install the UPS unit in any protected environment that provides adequate airflow around the unit, and is free from excessive dust, corrosive fumes and conductive contaminants. Do not operate your UPS in an environment where the ambient temperature or humidity is high. On the other hand, place the UPS unit away from monitor at least 20cm to avoid interference.

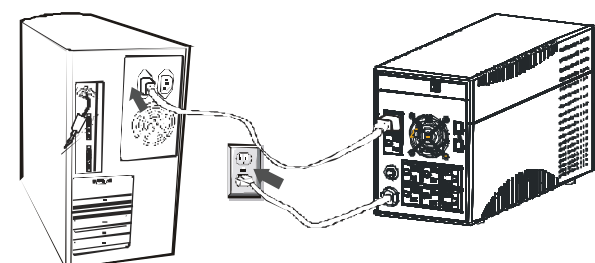
3 Charging

This unit is shipped from the factory with its internal battery fully charged. However, some energy may be lost during shipping so the battery should be recharged before using it. Plug the unit into an appropriate power supply and allow the UPS to charge fully by leaving it plugged in for 6-10 hours (depending on model).



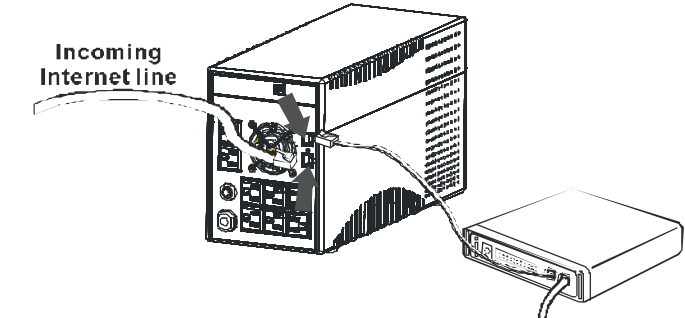
4 Computer Connection

Connect one computer-related device into each of the power receptacles supplied on the back of the UPS (maximum eight (8) devices).



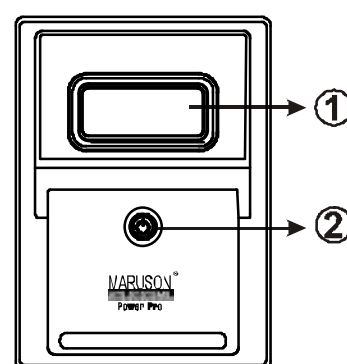
5 Modem/Phoneline Connection

Plug incoming internet line into the "In" socket at the back of the UPS. Use one more Internet line cable and plug one end of the Internet line cable to the "Out" socket at the back of the UPS. Plug the other end to the modem input socket as shown.



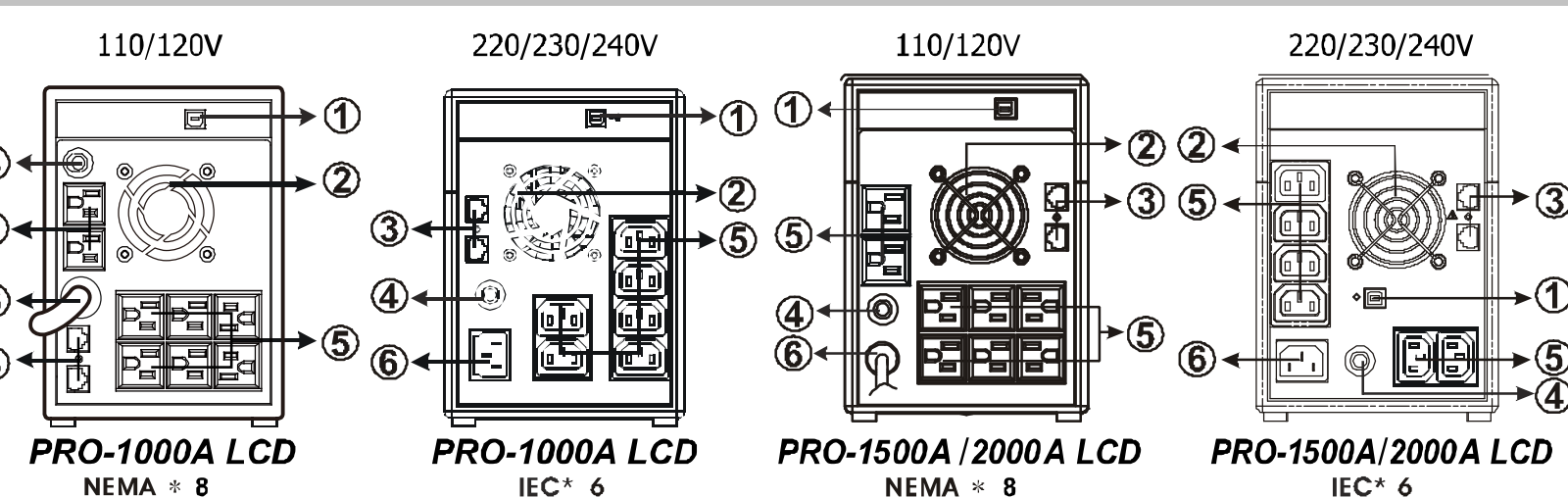
Front Panel—

- 1.LCD Back-Light
- 2.Power "ON/OFF" Switch



Back Panel—

- 1.USB Port
- 2.Cooling Fan
- 3.Modem/Phone Line
- 4.Circuit Breaker
- 5.AC Output
- 6.AC Input



Recycling Information

Your UPS contains Non-Spill Sealed Lead Batteries. On the battery you will find the battery name. Please refer to the chart on the bottom for recycling information. Other brand(s) of battery please contact Maruson Technology. If outside of USA or Canada, please contact your local authorized distributor.

If you have any question regarding to our product, please contact us at 1-888-MARUSON or e-mail us at CustSrv@MarusonUSA.com.

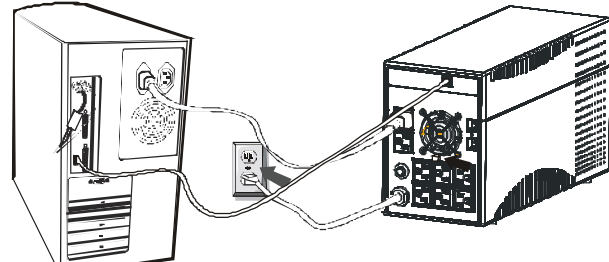
Battery Name	Recycling Inside the USA
CSB Battery	1-800-RE-USE-PB (7387372)
Panasonic	1-800-SAV-LEAD
YUASA	(877) 288-7722
LONG	202-719-4978



User's Manual

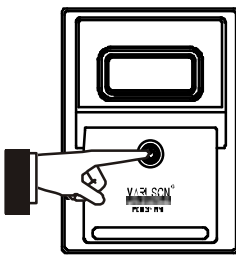
6 Serial Cable Connection

To allow for unattended system shutdown for your operating system, connect the USB cable as per diagram below.



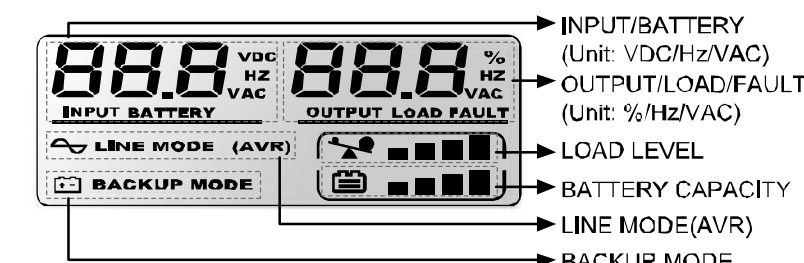
7 Turn On/Off

To turn on the UPS unit, press the power switch lightly. To turn off the UPS unit, press the power switch again

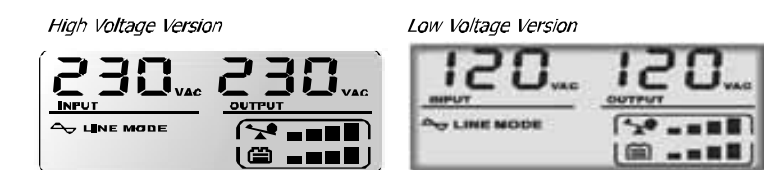


8 LCD Display Specification

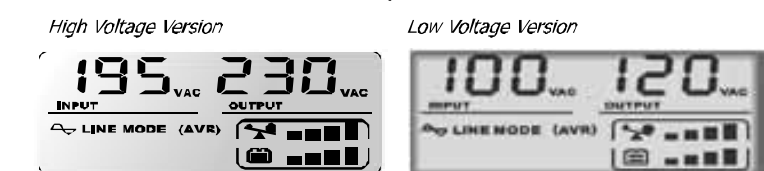
The LCD will always turns on when UPS works, including in off charging mode and fault mode. When LCD start to work, it will display all information for 3s



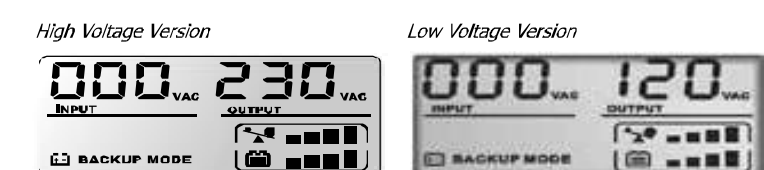
1).When in normal mode, it will display as below.



2).When in AVR mode, it will display as below. And the mark will flicker every 1second.



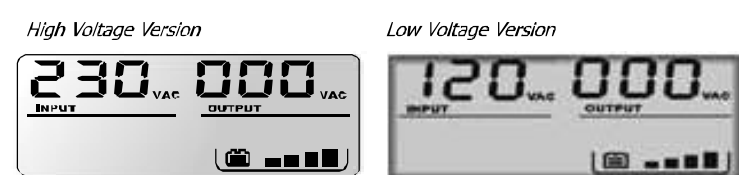
3).When in battery mode, it will display as below. And the mark will flicker every 1 second.



Note: If I/P-V<40V , input voltage will display "000"

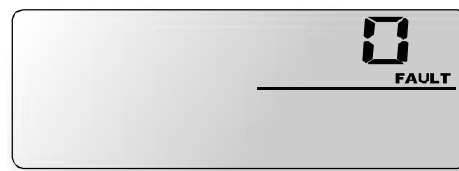
MARUSON[®]
UPS SYSTEMS

4).When in off charging mode, it will display as below.



Note: the output voltage always is displayed as "000" in off charging mode.

5).When in fault mode, it will display "FAULT" warning as in the below diagram.



Note: the fault code will be showed in fault mode.

6).Load level definition:

Load Level	Load Bar Indication
0%~25%	
25%~50%	
50%~75%	
75%~100%	

7).For 24V battery capacity definition:

Battery Level	Battery Bar Indication
Battery voltage≤22V	
22V≤Battery voltage≤23V	
23V≤Battery voltage≤25V	
Battery voltage≥25V	

8).When over load, the mark will flicker every 1second.



9). When battery low, the mark will flicker every 1 second.



Prower Pro UPS
1000/1500/2000

Safety Caution

IMPORTANT SAFETY INSTRUCTIONS

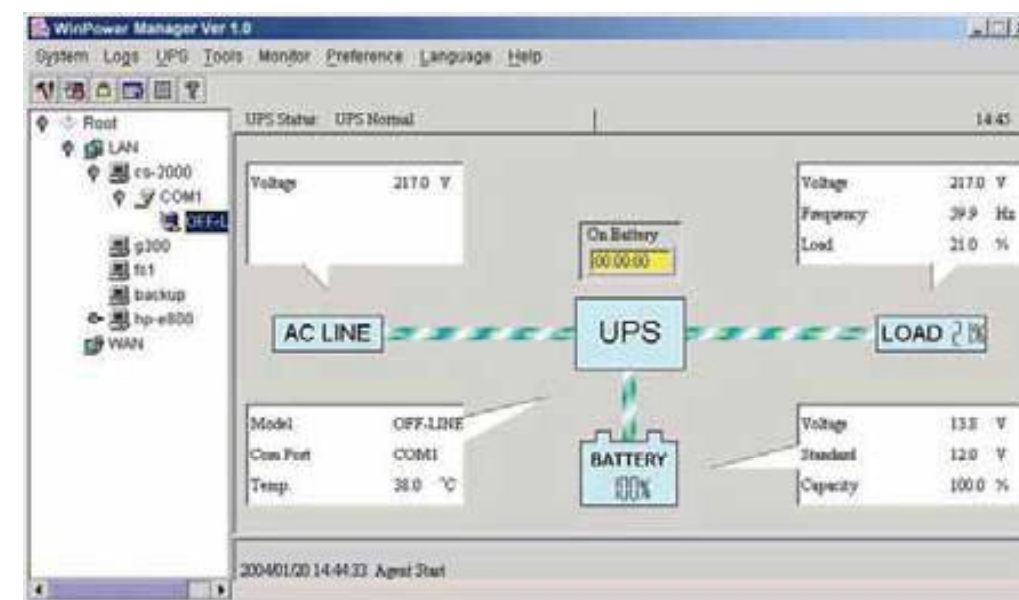
SAVE THESE INSTRUCTIONS- This manual contains important instructions for 1000VA/1400VA/2000VA that should be followed during installation and maintenance for the UPS and batteries.

Safety – CAUTION!

- This UPS utilizes voltages that may be hazardous. Do not attempt to disassemble the unit. The unit contains no user serviceable parts. Only factory service personnel may perform repairs.
- Internal battery voltage is 24Vdc. Sealed, lead-acid, 6 cells battery.
- Connection to any other type of receptacle other than a two-pole, three-wire grounding receptacle may result in a shock hazard as well as violate local electrical codes.
- In the event of an emergency, turn the power switch to the "off" position and disconnect the power cord from the AC power supply to properly disable the UPS
- Do not allow any liquids or any foreign object to enter the UPS. Do not place beverages or any other liquid-containing vessels on or near the unit.
- This unit intended for installation in a controlled environment (temperature controlled, indoor area free of conductive contaminants). Avoid installing the UPS in locations where there is standing or running water, or excessive humidity.
- Do not plug the UPS input into its own output.
- Do not attach a power strip or surge suppressor to the UPS.
- Do not attach non-computer-related items, such as medical equipment, life-support equipment, microwave ovens, or vacuum cleaners to UPS
- To reduce the risk of overheating the UPS, do not cover the UPS' cooling vents and avoid exposing the unit to direct sunlight or installing the unit near heat emitting appliances such as space heaters or furnaces.
- Unplug the UPS prior to cleaning and do not use liquid or spray detergent.
- Do not dispose of battery or batteries in a fire. The battery may explode.
- Do not open or mutilate the battery or batteries. Released electrolyte is harmful to the skin and eyes. It may be toxic.
- A battery can present a risk of electrical shock and high short circuit current. The following precautions should be observed when working on batteries :
 - 1). Remove watches, rings, or other metal objects from the hand.
 - 2). Use tools with insulated handles.
 - 3). Wear rubber gloves and boots.
 - 4). Do not lay tools or metal parts on the top of batteries.
 - 5). Disconnect charging source prior to connecting or disconnecting batteries terminal.
- Servicing of batteries should be performed or supervised by personnel knowledgeable of batteries and the required precautions. Keep unauthorized personnel away from batteries.
- When replacing batteries, replace with the same number of the sealed lead-acid batteries.
- This pluggable type A equipment with battery already installed by the supplier is operator installable and may be operated by laymen.
- During the installation of this equipment it should be assured that the sum of the leakage currents of the UPS and the connected loads does not exceed 3.5mA.
- The mains socket outlet that supplies the UPS shall be installed near the UPS and shall be easily accessible.
- To reduce the risk of fire, connect only to a circuit provided with 20 amperes maximum branch circuit overcurrent protection in accordance with the National Electrical Code, ANSI/NFPA 70.

-- WinPower --

WinPower is a brand new UPS monitoring software which provides user-friendly interface to monitor and control your UPS. This unique software provides safely auto shutdown for multi-computer systems while power failure. With this software, users can monitor and control any UPS on the same LAN no matter how far from the UPS



Installation procedure:

1. Install the CD software included with the unit or go online to download the software.

User's Manual

MARUSON[®]
UPS SYSTEMS

2. Choose the operation system you need and follow the instructions described to install the software.
3. When downloading all required files from the internet, enter the serial No: 511C1-01220-0100-478DF2A to install the software.

When your computer restarts, the WinPower software will appear as a green plug icon located in the system tray (near the clock).

Troubleshooting

Use the table below to solve minor UPS installation or operation problems. If any abnormal situations occur that are not listed above, please call service people immediately.

Symptom	Possible Cause	Remedy
No LCD display on the front panel.	1. Missing battery.	1. Charge battery up to 10 hours.
	2. Battery defect.	2. Replace with the same type of battery.
	3. Input power cord has no input power or Power Switch has not been pressed.	3. Press the power switch or connect input plug to appropriate power supply.
Alarm buzzer beeps continuously when AC supply is normal.	Overload of the UPS.	Verify that the load matches the UPS capability specified in the specs.
When power fails, back-up time is shorten.	1. Overload of the UPS.	1. Remove some non-critical load.
	2. Battery voltage is too low.	2. Charge battery 10 hours or more.
	3. Battery defect due to high temperature, operation environment, or improper operation to battery.	3. Replace with the same type of battery.
Communication lost between UPS and computer.	1. Software is not installed well.	1. Check the setting of the software.
	2. Cable is not properly connected.	2. Make sure USB cable is firmly connected to the computer and confirm the settings again.
Mains normal but LCD display Battery mode.	1. Circuit breaker is broken.	1. Reset the circuit breaker
	2. Power cord is loose.	2. Reconnect the power cord properly.

Specification

MODEL		PRO-1000A LCD	PRO-1500A LCD	PRO-2000A LCD
CAPACITY	VA/W	1000VA/600W	1400VA/840W	2000VA/1200W
INPUT	Voltage	110/120VAC or 220/230/240VAC		
	Voltage Range	89-145VAC/ 162-290VAC	81-145VAC/ 166-290VAC	
	Voltage	110/120VAC or 220/230/240VAC		
OUTPUT	Voltage Regulation (Battery Mode)	+/- 10%		
	Frequency	50Hz or 60Hz		
	Frequency Regulation (Battery Mode)	+/-1 Hz		
	Output Waveform	Modified Sine Wave		
BATTERY	Battery Type	12V7Ah x 2pcs	12V9Ah x 2pcs	
	Backup Time (1PC & 1LCD Display)	up to 60 minutes	up to 85 minutes	up to 90 minutes
	Recharge Time	10 Hours to 90% after complete discharge	6 Hours to 90% after complete discharge	
	TRANSFER TIME	4-6ms (Typical)	4-8ms (Typical)	
INDICATOR	AC Mode/ Backup Mode/ Fault	Indicated in LCD panel		
AUDIBLE ALARM	Backup Mode	Sounding every 10 seconds		
	Battery Low	Sounding every 1 second		
	Overload	Sounding every 0.5 seconds		
	Fault	Continuous sounding		
PROTECTION	Full Protection	Overcharge and Overload Protection		
PHYSICAL	Dimension (D x H x W)	405 x 205 x 145mm / 15.9 x 8.1 x 5.7in		
WEIGHT	Net Weight	9.7Kgs / 21.4lb	12Kg / 26.5lb	
ENVIRONMENT	Operating Environment	0- 40°C, 0-90 % Relative Humidity (non-condensing)		
	Noise Level	Less than 45dB		
INTERFACE	USB	For Windows Family, Mac, Linux Family, and Unix Based Families		

All trade names are registered trademarks of respective manufacturers listed. Specifications may change without notification.