

MODEL:

SRW12UHD

SmartRack® Heavy-Duty, Side-Mounting Wall-Mount Rack Enclosure Cabinet



12 Rack Units



500 lb Load Rating



Sturdy Steel Construction



Locking Doors & Side Panels



Fits Full-Depth Network Equipment



Standard 19" Rack Width



24" Low-Profile Side Mounting



Convenient Cable Access



Adjustable Mounting Rails



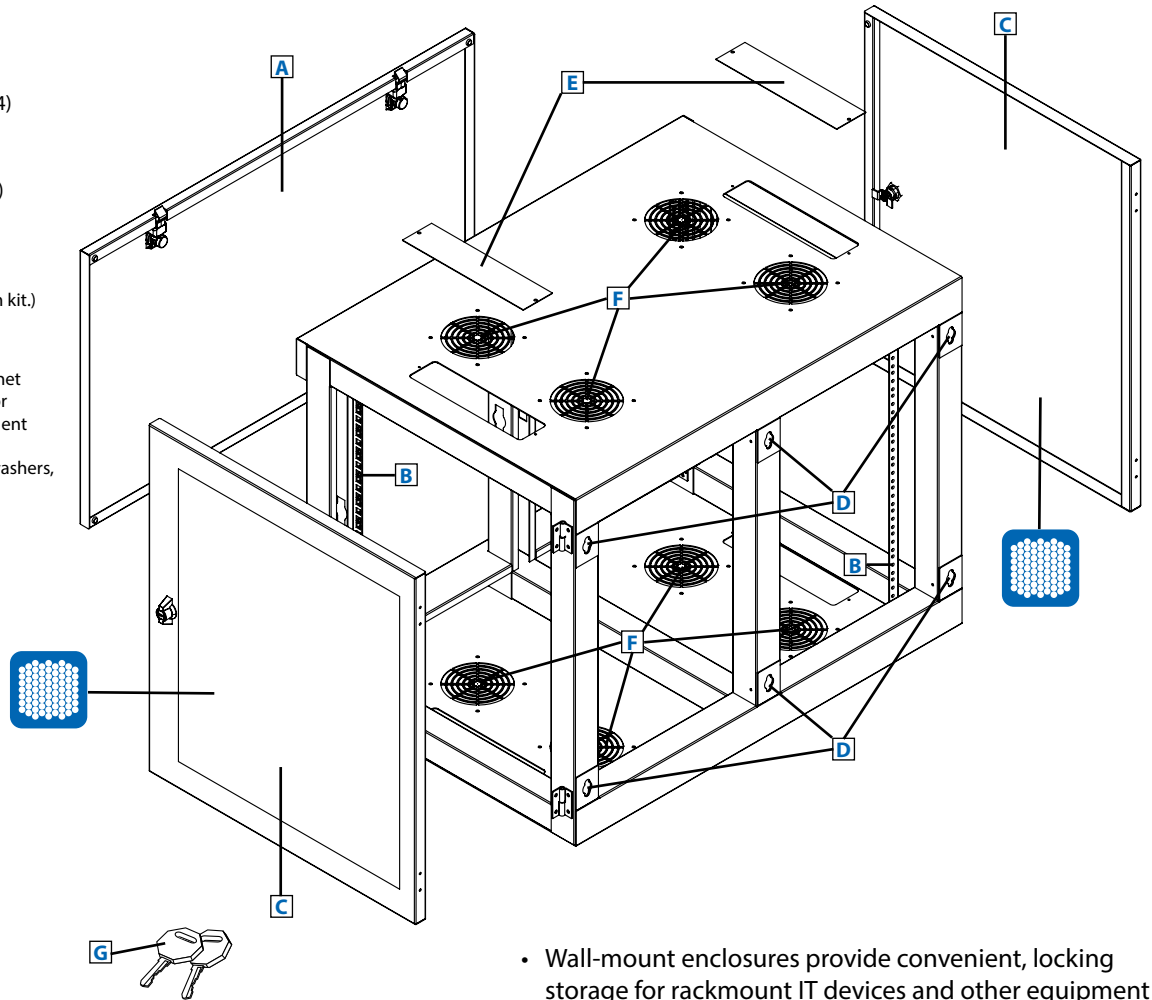
Ventilated for Ample Airflow



Square Hole Mounting

- A** Front Panel (Lockable/Removable)
- B** Adjustable Mounting Rails (4)
- C** Side Doors (2) (Lockable/Removable)
- D** Wall Mount Keyhole Slots (6)
- E** Cable Access Port Covers (4) (Removable)
- F** Ventilation Fan Ports (8) (Support optional SRFANWM fan kit.)
- G** Keys (2)

Also Includes: Owner's manual, cabinet ground screw, pre-installed side door ground wire and rackmount equipment mounting hardware (20 cage nuts, 20 mounting screws, 20 nylon cup washers, 20 #12-24 equipment screws).



- Wall-mount enclosures provide convenient, locking storage for rackmount IT devices and other equipment that should be off the floor, out of the way and secure
- Accommodates 29"-31" full-depth server equipment in limited-space applications
- Sideways wall mount design creates a low profile (24") and provides sufficient leverage for heavy equipment

SEE NEXT PAGE FOR DETAILED UNIT MEASUREMENTS



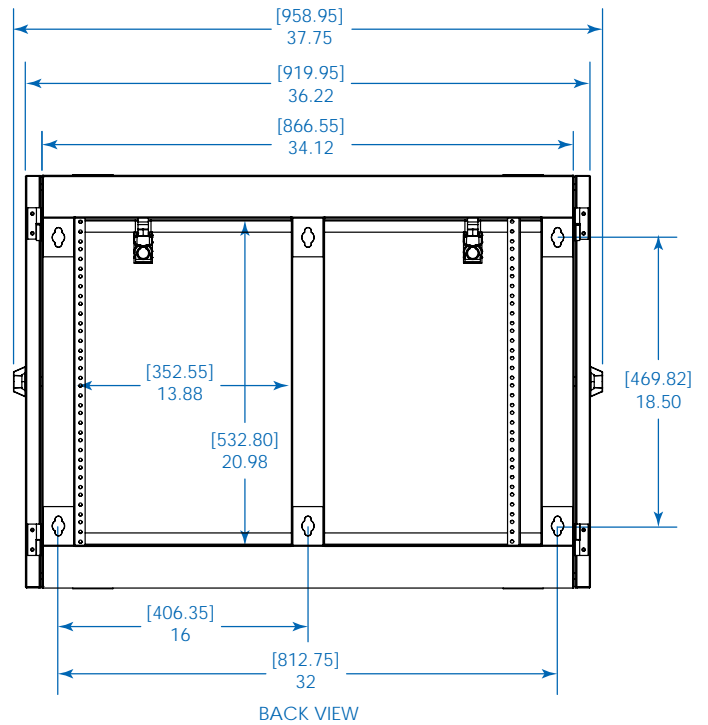
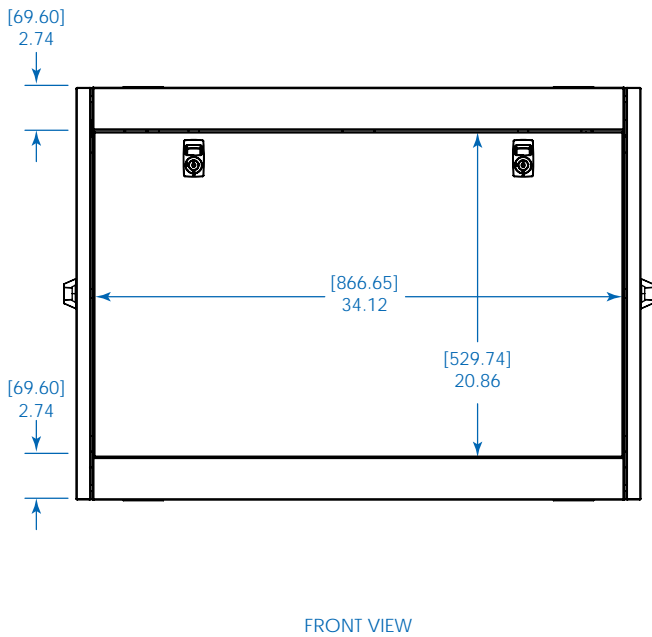
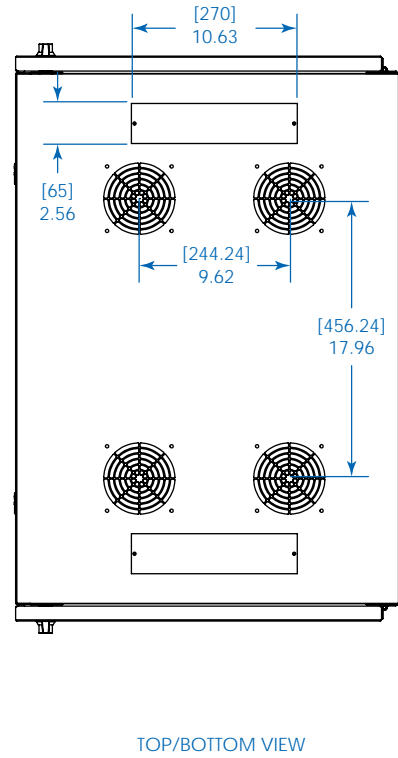
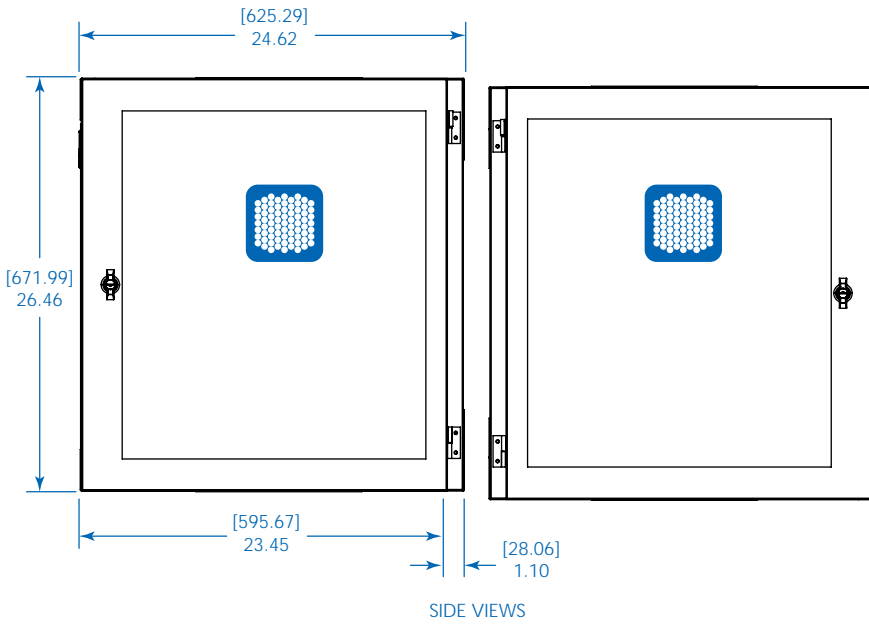
1111 W. 35th Street
Chicago, IL 60609 USA
773.869.1234
www.tripplite.com

Specifications

| | |
|---------------------------------|---|
| Models | SRW12UHD |
| Rack Spaces | 12U |
| Equipment Mounting Depth | Up to 32.5 in. (826 mm) |
| Load Rating* | 500 lb (181 kg) |
| Unit Dimensions (H x W x D) | 26.5 x 36.2 x 24.8 in. (672 x 920 x 629 mm) |
| Shipping Dimensions (H x W x D) | 28 x 26 x 38 in. (711 x 660 x 965 mm) |
| Unit Weight | 101.4 lb (46 kg) |
| Shipping Weight | 119 lb (54 kg) |
| Standards | Meets EIA-310-E, NOM, RoHS standards |

* The load rating includes the combined weight of the unit and installed equipment. The unit must be mounted to a stable surface with user-supplied anchors capable of bearing the full load. Tripp Lite has a policy of continuous improvement. Specifications are subject to change without notice.

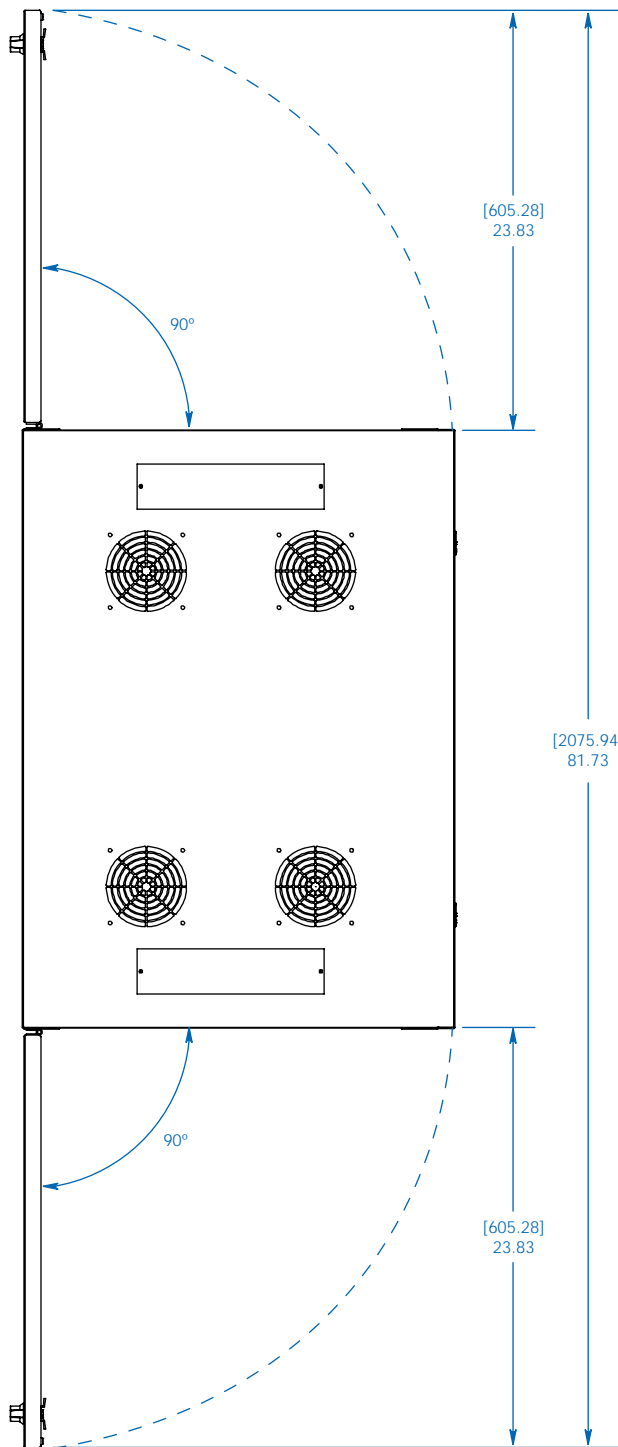




Dimensions: [mm] INCHES

Tripp Lite has a policy of continuous improvement. Specifications are subject to change without notice.





Dimensions: [mm] INCHES

Tripp Lite has a policy of continuous improvement. Specifications are subject to change without notice.

MODEL:
SRW12UHD
TRIPPLITE

1111 W. 35th Street
 Chicago, IL 60609 USA
 773.869.1234
 www.tripplite.com