

# TU2-ET100

**USB 2.0 Fast Ethernet Adapter  
Quick Installation Guide**

**Adaptateur Fast Ethernet USB 2.0  
Guide d'installation rapide**

**USB 2.0 Fast-Ethernet-Adapter  
Kurzanleitung zur Installation**

**Guía de instalación rápida del  
adaptador Fast Ethernet con USB 2.0**

**Version 01.26.05**



**TRENDnet**<sup>®</sup>  
TRENDware, USA  
**What's Next in Networking**

# Table of Contents

English .....	1
1. Prepare for Installation .....	1
2. Product Detail .....	2
3. Hardware Installation .....	3
4. Driver Installation .....	4
Troubleshooting .....	14

# English QIG

## 1. Prepare for Installation

Thank you for purchasing TRENDnet's TU2-ET100 USB 2.0 Fast Ethernet Adapter.

This guide will help you set-up your USB 2.0 Fast Ethernet Adapter. Following the installations should be quick and easy. If you run into problems, please refer to the Troubleshooting section. If you need further technical support, please visit [www.TRENDNET.com](http://www.TRENDNET.com) or call technical support by phone.

### Verify Package Contents

Please make sure you have everything in the box:

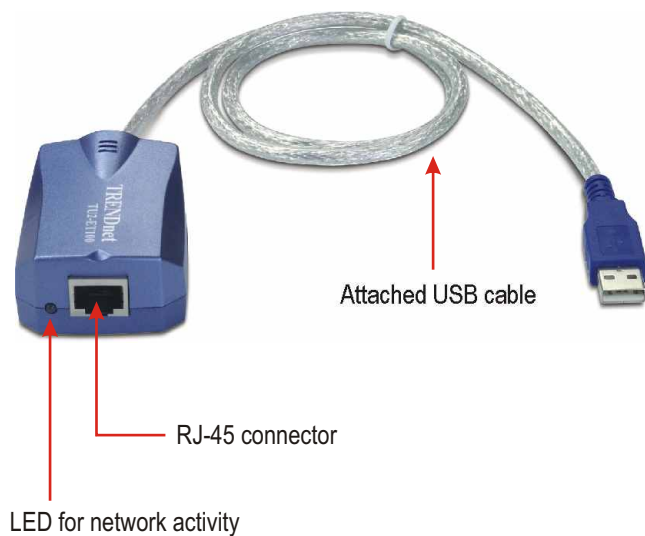


### Minimum System Requirements

1. Pentium 300Mhz or faster with at least 64MB RAM
2. Computer with an available USB slot
3. Windows XP, 2000, ME, 98SE

## 2. Product Detail

The USB 2.0 Fast Ethernet Adapter has one RJ-45 connector, an LED for network activity and an attached USB cable.



### 3. Hardware Installation

1. Turn on your computer and allow your operating system to fully load into the system.
2. Connect the Type-A connector of your TU2-ET100 into a USB slot of your desktop or notebook.



3. Connect one end of the CAT-5 cable into the TU2-ET100's RJ-45 port, and connect the other end into your switch, router, cable modem, or DSL modem.

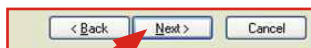
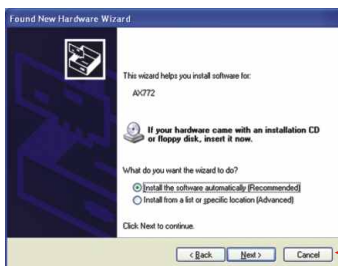


# 4. Driver Installation

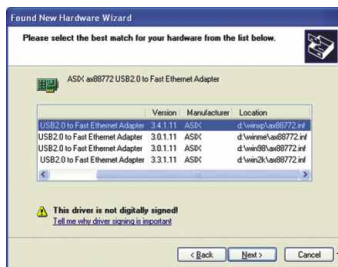
## Windows XP

After inserting the TU2-ET100 into one of your USB ports, the “Found New Hardware” message appears. Please insert the TU2-ET100 Driver CD-ROM into your computer’s CD-ROM drive.

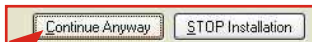
1. Click **Install the software automatically** (Recommended) and Click **Next**.



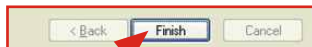
2. Select **d:\winxp\ax88772.inf** and Click **Next**.



**NOTE:** TRENDnet's USB 2.0 Fast Ethernet Adapter has been fully tested under all supported Windows Operating Systems and has been approved for their functionality; click Continue Anyway.



### 3. Click Finish.

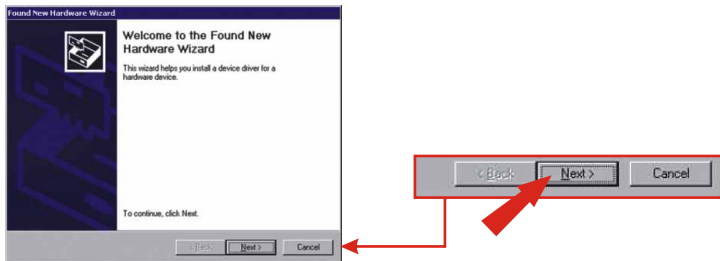


Your driver installation is now complete.

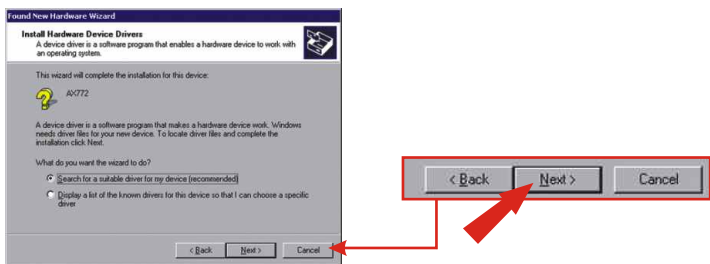
## Windows 2000

After inserting the TU2-ET100 into one of your USB slots, the “Found New Hardware” message appears.

1. Insert the TU2-ET100 Driver CD-ROM that came with this product. Click **Next**.

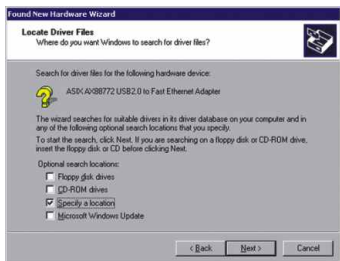


2. Select Search for suitable driver for my device (recommended) and Click **Next**.



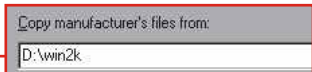


### 3. Select **Specify a location** and Click **Next**.



### 4. Type **D:\win2k** in the text box and Click **OK**.

**NOTE:** Replace "D" in "D:\win2k" with whichever letter is assigned to your CD-ROM drive.



### 5. Click **Next**.



**NOTE:** TRENDnet's USB 2.0 Fast Ethernet Adapter has been fully tested under all supported Windows Operating Systems and has been approved for their functionality; click Yes.



## 6. Click **Finish**.



Your driver installation is now complete.

## Windows Me

After inserting the **TU2-ET100** into one of your USB slots, the “Found New Hardware” message appears.

1. Insert the TU2-ET100 Driver CD-ROM that came with this product. Click **Specify the location** of the driver and Click **Next**.



2. Click **Search for a better driver**, click **Specify a location:** and type in **D:\WinMe**. Click **Next**.



### 3. Click Next.



### 4. Click Next.



### 5. Click Finish.



## 6. Click **Yes**.



Your driver installation is now complete.

## Windows 98SE

After inserting the **TU2-ET100** into one of your USB slots, the “Found New Hardware” message appears.

### 1. Click **Next**.



### 2. Click **Search for the best driver for your device** and click **Next**.



3. Click **Specify a location:** and type in **D:\win98**. Click **Next**.



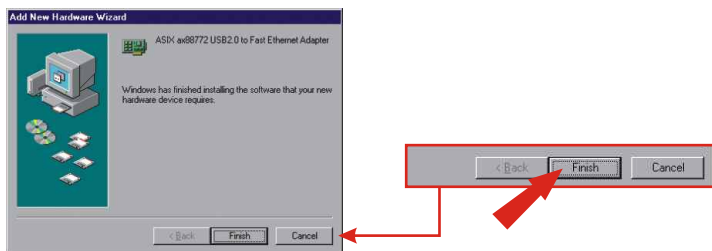
4. Click **Next**.



5. Insert the Windows 98SE CD-ROM into your computer's CD-ROM drive.  
6. Click **OK**.



## 7. Click **Finish**.



## 8. Click **Yes**.



Your driver installation is now complete.

**Q1. Can I connect or disconnect TU2-ET100 while the computer is on?**

**A1.** Yes, you can connect or disconnect TU2-ET100 while the computer is on because the USB interface is Plug-and-Play compliant and hot-pluggable.

**Q2. After successful installation of the TU2-ET100 USB Fast Ethernet, I connected my USB device into a USB slot, but it does not seem to work. What should I do?**

**A2.** Make sure that the CAT-5 cable is connected properly into your switch, or broadband modem. Double check the connection at the other end of the CAT-5 cable, and verify that the cable is inserted properly into your TU2-ET100. Also, verify that your switch or your broad-band modem is getting any power.

**Q3. When I verify the installation of the TU2-ET100, I see an exclamation point on my network adapter. What should I do?**

**A3.** Go to Control Panel and double-click the System icon. Go to the Device Manager and expand the Network adapters heading. Double-click ASIX ax887722 USB2.0 to Fast Ethernet Adapter (the icon that has an exclamation point on it), and click the Driver tab. On the Driver tab, click Update Driver. Use 4. Driver Installation in this installation manual to guide you in installing your driver.

If you have any questions regarding the **TU2-ET100**, please contact Trendware Technical Support Department.

This equipment has been tested and found to comply with Part 15 of the FCC Rules. Operation is subject to the following two conditions:

- (1) This device may not cause harmful interference.
- (2) This device must accept any interference received including interference that may cause undesired operation.

This equipment is in compliance with the requirements of the following regulations: EN 55 022: CLASS B







TRENDware, USA

**What's Next in Networking**

## Product Warranty Registration

Please take a moment to register your product online.  
Go to TRENDware's website at <http://www.TRENDNET.com>

## TRENDnet Technical Support

### US/Canada Support Center

#### Contact

**Telephone:** 1(310) 626-6252  
**Fax:** 1(310) 626-6267  
**Email:** [support@trendnet.com](mailto:support@trendnet.com)

#### Tech Support Hours

7:30am - 6:00pm Pacific Standard Time  
Monday - Friday

### European Support Center

#### Contact

**Telephone**  
Deutsch : +49 (0) 6331 / 268-460  
Français : +49 (0) 6331 / 268-461  
Español : +49 (0) 6331 / 268-462  
English : +49 (0) 6331 / 268-463  
Italiano : +49 (0) 6331 / 268-464  
Dutch : +49 (0) 6331 / 268-465  
**Fax:** +49 (0) 6331 / 268-466

#### Tech Support Hours

8:00am - 6:00pm Middle European Time  
Monday - Friday

**TRENDware International, Inc.**  
3135 Kashiwa Street. Torrance, CA 90505  
**<http://www.TRENDNET.com>**