
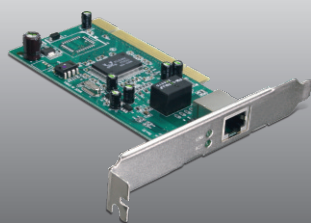


Guide d'installation rapide 

TEG-PCITXR
TEG-PCITXRL
3.02

Table of Contents

Français	1
1. Avant de commencer	1
2. Procéder à l'installation	2
Troubleshooting	5



Contenu de l'emballage

- TEG-PCITXR/TEG-PCITXRL
- Pilote sur CD-ROM
- Guide d'installation rapide en plusieurs langues

Vérification de l'équipement

- Logement 2.1 PCI 32 bits
- D'un lecteur de CD-ROM
- Microprocesseur : 1GHz ou supérieur (Windows 7) / 800MHz ou supérieur (Windows Vista) / 300 MHz ou supérieur (Windows XP/2000/ME/98)
- Mémoire: 1GB RAM or above (Windows 7) / 512 MB ou supérieur (Windows Vista) / 256 MB ou supérieur (Windows XP/2000/ME/98)
- Windows 7(32/64-bit) / Vista(32/64-bit) / XP(32/64-bit) / 2000/ME/98
- Un câble Ethernet RJ-45

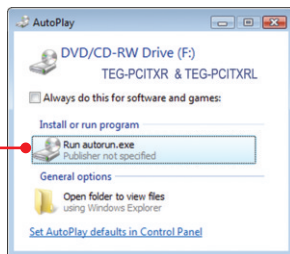
2. Procéder à l'installation

Note:

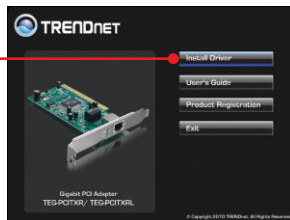
1. Pour l'installation des pilotes sur Windows 98SE et Me, veuillez consulter le guide de l'utilisateur sur le CD-ROM avec le pilote.
2. Ne branchez pas le TEG-PCITXR/TEG-PCITXRL à votre ordinateur avant d'en recevoir la consigne.

1. Insérez le CD-ROM avec l'utilitaire et le pilote dans le lecteur de CD-ROM de votre ordinateur. (Windows Vista/XP/2000).

2. Cliquez sur **Run autorun.exe** (Windows Vista uniquement)

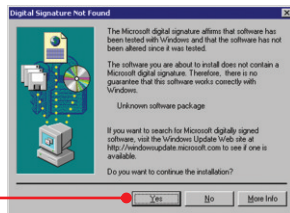


3. Cliquez ensuite sur **Install Driver** (Installer pilote) (Windows Vista/XP/2000).



4. Suivez les instructions de l'écran de l'**Assistant d'installation** (Windows Vista/XP/2000).

5. Cliquez sur **Yes (Oui)** (Windows 2000 uniquement)

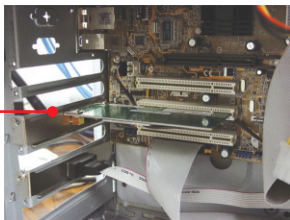


6. Cliquez sur **Finish** (Terminer).
(Windows Vista/XP/2000).

7. Eteignez votre ordinateur et ouvrez le boîtier de votre ordinateur.

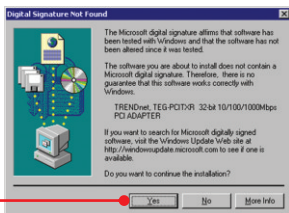


8. Insérez fermement la carte PCI dans un logement PCI libre, allumez ensuite l'ordinateur et attendez que le bureau Windows apparaisse.



9. Les pilotes s'installeront automatiquement.

10. Cliquez sur **Yes** (Oui)
(Windows 2000 uniquement).



11. Branchez un câble réseau RJ-45 de l'ordinateur à un port Ethernet libre de votre routeur ou de votre switch.



ENGLISH

FRANÇAIS

DEUTSCH

ESPAÑOL

РУССКИЙ

L'installation est maintenant complète

Si vous désirez des informations détaillées sur la configuration et les paramètres avancés du **TEG-PCITXR/TEG-PCITXRL**, veuillez consulter la rubrique Dépannage, le guide de l'utilisateur sur CD-ROM ou le site Internet de TRENDnet sur <http://www.trendnet.com>.

Enregistrez votre produit

Afin d'être sûr de recevoir le meilleur niveau de service clientèle et le meilleur support possibles, veuillez prendre le temps d'enregistrer votre produit en ligne sur: www.trendnet.com/register Nous vous remercions d'avoir choisi TRENDnet.

1. I inserted the Driver CD-ROM into my computer's CD-ROM drive and the installation menu does not appear automatically. What should I do?

1. For Windows Vista, if the installation menu does not appear automatically, click **Start**, click the **Start Search** box, and type **D:\autorun.exe** where "**D**" in "D:\autorun.exe" is the letter assigned to your CD-ROM Drive, and then press the ENTER key on your keyboard.
2. For Windows 2000/XP, if the installation menu does not appear automatically, click **Start**, click **Run**, and type **D:\autorun** where "**D**" in "D:\autorun.exe" is the letter assigned to your CD-ROM Drive, and then press the ENTER key on your keyboard.

2. Windows doesn't recognize my new hardware. What should I do?

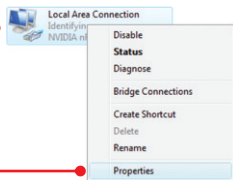
1. Verify that your computer meets the system requirements as specified in **Section 1**.
2. Access your device manager to make sure the adapter is installed properly. If you see a networking device with a yellow question mark or exclamation point, you will need to reinstall the device and/or the drivers. To access the device manager on Windows 2000/XP, right-click **My Computer**, click **Properties**, click the **Hardware** tab, and then click **Device Manager**. To access the device manager on Windows 7/Vista, right-click **Computer**, click **Properties** and then click **Device Manager**.
3. If the device manager fails to recognize the presence of a new networking adapter, verify that the network adapter is firmly seated in the PCI slot.
4. Plug the adapter into another PCI slot on your computer.

3. Windows recognizes my new hardware, but I'm unable to connect to my network. What should I do?

1. Verify that the RJ-45 Ethernet Cable is securely connected from your switch or router to your network adapter.
2. Verify that the LEDs on your network card are lit.
Verify that the TCP/IP settings are set to **Obtain an IP address automatically** (see the steps below).

Windows 7

1. Go into the **Control Panel**, click **Network and Internet**, click **Network and Sharing Center**, click **Change Adapter Settings** and then right-click the **Local Area Connection** icon and then click **Properties**.



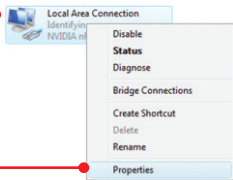
Obtain an IP address automatically
 Use the following IP address:

IP address:
 Subnet mask:
 Default gateway:

2. Click **Internet Protocol Version 4(TCP/IPv4)** and then click **Properties**. Then click on **Obtain an IP address automatically**.

Windows Vista

1. Go into the **Control Panel**, click **Network and Internet**, click **Network and Sharing Center**, click **Manage Network Connections** and then right-click the **Local Area Connection** icon and then click **Properties**.



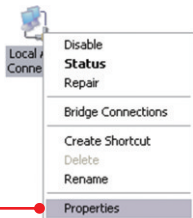
Obtain an IP address automatically
 Use the following IP address:

IP address:
 Subnet mask:
 Default gateway:

2. Click **Internet Protocol Version 4(TCP/IPv4)** and then click **Properties**. Then click on **Obtain an IP address automatically**.

Windows XP/2000/2003Server

1. Go into the **Control Panel**, double-click the **Network Connections** icon and then right-click the **Local Area Connection** icon and then click **Properties**.



Obtain an IP address automatically
 Use the following IP address:

IP address:
 Subnet mask:
 Default gateway:

2. Click **Internet Protocol (TCP/IP)** and then click **Properties**. Then click on **Obtain an IP address automatically**.

4. How do I install the drivers on Windows 98 or ME?

Please refer to the User's Guide included on the Driver CD-ROM.

5. Why am I only getting a network connection speed of 100Mbps instead of 1000Mbps?

1. Check the Ethernet Cable. Make sure you are using CAT-5e or CAT-6 Ethernet Cables. Some CAT-5 cables are not rated to run in Gigabit.
2. Make sure you are connected to a 1000Mbps switch.

If you still encounter problems or have any questions regarding the **TEG-PCITXR_TEG-PCITXRL**, please refer to the User's Guide included on the Driver CD-ROM or contact Trendnet's Technical Support Department.

Certifications

This equipment has been tested and found to comply with FCC and CE Rules.

Operation is subject to the following two conditions:

- (1) This device may not cause harmful interference.
- (2) This device must accept any interference received. Including interference that may cause undesired operation.



Waste electrical and electronic products must not be disposed of with household waste. Please recycle where facilities exist. Check with you Local Authority or Retailer for recycling advice.



NOTE: THE MANUFACTURER IS NOT RESPONSIBLE FOR ANY RADIO OR TV INTERFERENCE CAUSED BY UNAUTHORIZED MODIFICATIONS TO THIS EQUIPMENT. SUCH MODIFICATIONS COULD VOID THE USER'S AUTHORITY TO OPERATE THE EQUIPMENT.

ADVERTENCIA

En todos nuestros equipos se mencionan claramente las características del adaptador de alimentación necesario para su funcionamiento. El uso de un adaptador distinto al mencionado puede producir daños físicos y/o daños al equipo conectado. El adaptador de alimentación debe operar con voltaje y frecuencia de la energía eléctrica domiciliar existente en el país o zona de instalación.



Product Warranty Registration

Please take a moment to register your product online.
Go to TRENDnet's website at <http://www.trendnet.com/register>