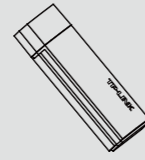


Quick Installation Guide

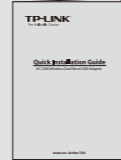
AC1200 Wireless Dual Band USB Adapter

MODEL NO. Archer T4U

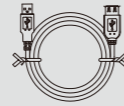
Package Contents



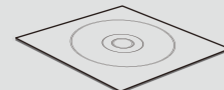
Archer T4U



QIG



USB Cable



Resource CD

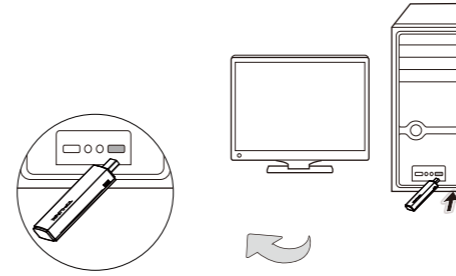
System Requirement

- Windows 8
- Windows 7
- Windows XP

1 Hardware Connection

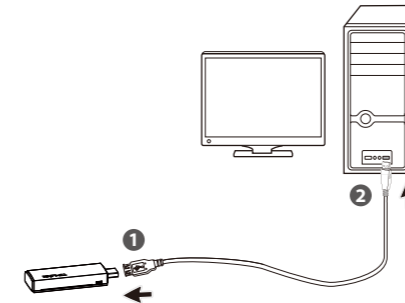
Method One

Plug the adapter into your computer's USB port directly.



Method Two

Connect the adapter and your computer with the provided USB cable.

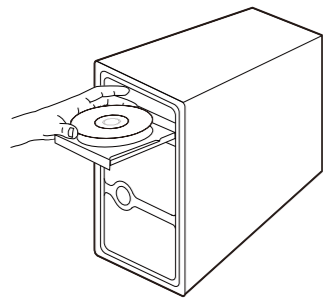


You may see the **Found New Hardware Wizard** after the adapter has been inserted. Please click **Cancel**.



2 Software Installation (The installation procedures in Windows 8/7/ Vista/ XP are similar. Here we use the procedure in Windows 7 as an example.)

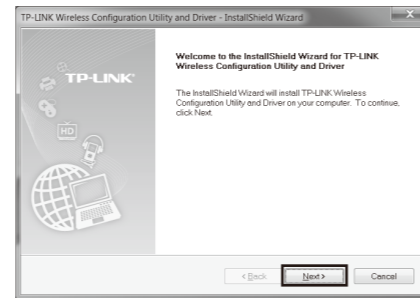
- 1 Insert the TP-LINK Resource CD into the CD-ROM drive.



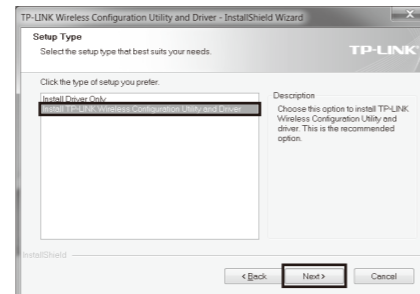
- 2 Find the model **Archer T4U** and select **Install Driver and Utility**.



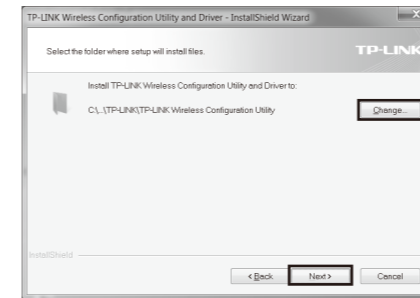
- 3 The **InstallShield Wizard** window will appear. Click **Next** to continue.



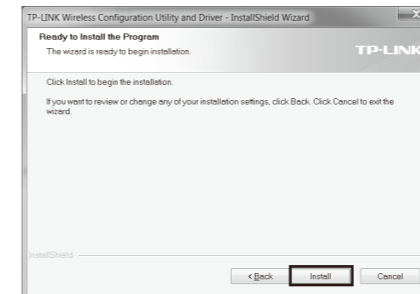
- 4 Select **Install TP-LINK Wireless Configuration Utility and Driver** and then click **Next**.



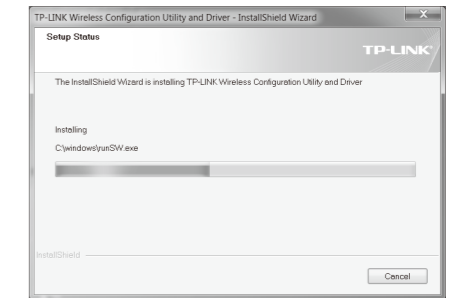
- 5 Click **Change** to specify the destination location or you can leave it default. Click **Next** to continue.



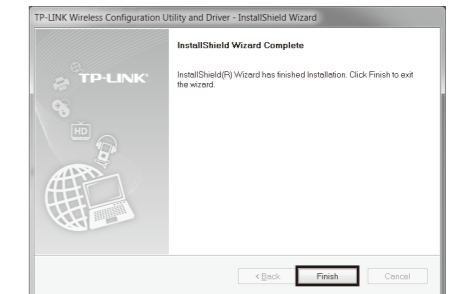
- 6 Click **Install** to install the driver and utility for your adapter.



- 7 The installation process may take 1~2 minutes.

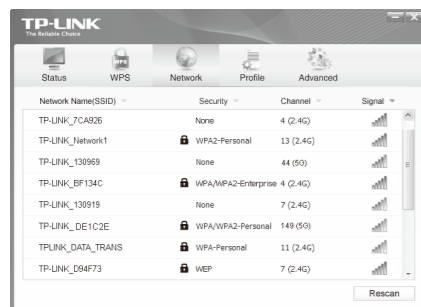



- 8 The following screen will then appear. Click **Finish** to complete the setup.



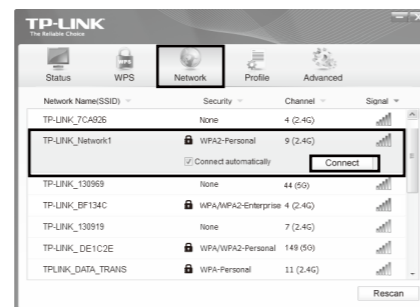
3 Connect to Network (You can skip to **Appendix: Connect to Wireless Router by WPS** to quickly connect to a network if your Wireless Router or Access Point features WPS or QSS function.)

1 After installation, the configuration page will pop up on your desktop.



Note The icon  will appear on your desktop. Double-clicking on the icon can start the utility.

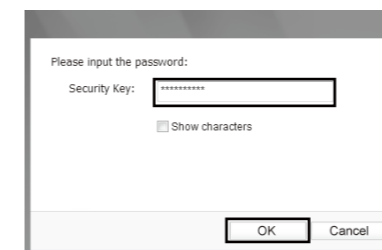
2 Click **Network** in the tools section to display a list of available wireless networks. Highlight the target network name (e.g. TP-LINK_Network1) and then click **Connect** to build a connection.



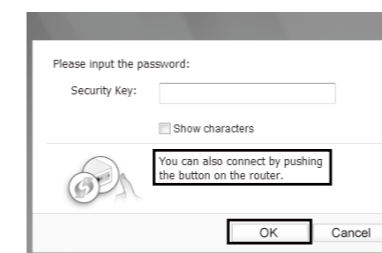
Note Here we only choose a wireless network with the security type of **WPA/WPA2-Personal** as an example to elaborate the following steps. If you want to know more about the connection to a wireless network with the security type of **WPA/WPA2-Enterprise**, please refer to the User Guide on the resource CD included.

3 If the network is unsecured, you will directly connect to it. If it is secured (with WPA/WPA2-Personal), there are two ways to connect to it.

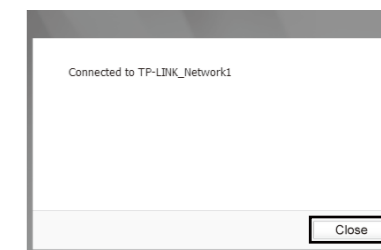
Method One:
Input the password into the **Security Key** field and then click **OK** to continue.



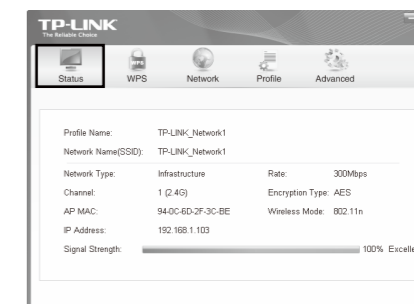
Method Two:
Without entering a key, push the **WPS** or **QSS** button on your Router as hinted "You can also connect by pushing the button on the router". Then click **OK** to continue.



4 The following screen indicates successful connectivity. Click **Close** to enjoy the Internet.



5 To view more information about the network connected, click **Status** in the tools section.

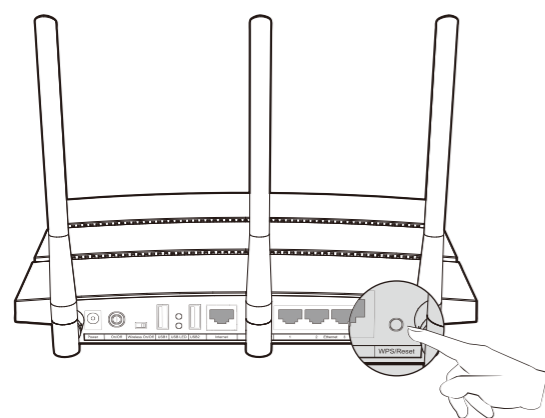


Appendix: Connect to Wireless Router by WPS

If your wireless Router features the WPS or QSS function, you can also set up a wireless connection in this way.

Note For more configuration methods of WPS, please refer to the User Guide on the Resource CD.

1 Push the **WPS/Reset** button for 2~3 seconds on the Router. (Here we use Wireless Router TL-WDR4900 as an example.)



2 Press and hold the WPS button on the adapter for 2~3 seconds until Figure 2 appears.

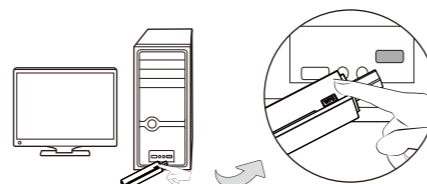


Figure 1

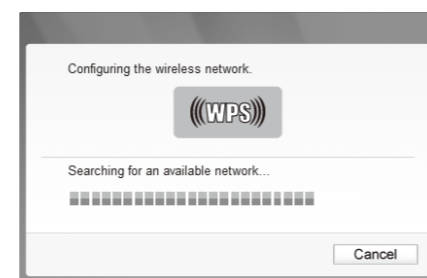


Figure 2

3 Wait for the connection process to complete. The following screen indicates successful connectivity. Click **OK** to finish the WPS connection.



Technical Support

- For more troubleshooting help, go to www.tp-link.com/en/support/faq
- To download the latest Firmware, Driver, Utility and User Guide, go to <http://www.tp-link.com/en/support/download/>
- For all other technical support, please contact us by using the following details:

<p>Global Tel: +86 755 2650 4400 Fee: Depending on rate of different carriers, IDD. E-mail: support@tp-link.com Service time: 24hrs, 7 days a week</p> <p>Singapore Tel: +65 6284 0493 Fee: Depending on rate of different carriers. E-mail: support.sg@tp-link.com Service time: 24hrs, 7 days a week</p> <p>UK Tel: +44 (0) 845 147 0017 Fee: Landline: 1p-10.5p/min, depending on the time of day. Mobile: 15p-40p/min, depending on your mobile network. E-mail: support.uk@tp-link.com Service time: 24hrs, 7 days a week</p> <p>USA / Canada Toll Free: +1 866 225 8139 E-mail: support.usa@tp-link.com(USA) support.usa@tp-link.com(Canada) Service time: 24hrs, 7 days a week</p> <p>Malaysia Toll Free: 1300 88 875 465 E-mail: support.my@tp-link.com Service time: 24hrs, 7 days a week</p> <p>Ukraine Tel: 0 800 505 508 Fee: Free for Landline; Mobile: Depending on rate of different carriers E-mail: support.ua@tp-link.com Service time: Monday to Friday 10:00 to 22:00</p> <p>Italy Tel: +39 023 051 9020 Fee: Depending on rate of different carriers. E-mail: support.it@tp-link.com Service time: Monday to Friday, 09:00 to 13:00; 14:00 to 18:00</p> <p>Germany / Austria Tel: +49 1805 875 465 (German Service) +49 1805 TPLINK +43 820 820 360 Fee: Landline from Germany: 0.14EUR/min. Landline from Austria: 0.20EUR/min. E-mail: support.de@tp-link.com Service Time: Monday to Friday, 09:00 to 12:30 and 13:30 to 18:00. GMT+1 or GMT+2 (DST in Germany) *Except bank holidays in Hesse</p>	<p>Australia / New Zealand Tel: AU 1300 87 5465 (Depending on 1300 policy). NZ 0800 87 5465 (Toll Free) E-mail: support.au@tp-link.com (Australia) support.nz@tp-link.com (New Zealand) Service time: 24hrs, 7 days a week</p> <p>Turkey Tel: 0850 72 444 88 (Turkish Service) Fee: Depending on rate of different carriers. E-mail: support.tr@tp-link.com Service time: 9:00 to 21:00, 7 days a week</p> <p>Switzerland Tel: +41 (0) 848 800 998 (German Service) E-mail: support.ch@tp-link.com Fee: 4-8 Rp/min, depending on rate of different time. Service time: Monday to Friday, 09:00 to 12:30 and 13:30 to 18:00. GMT+1 or GMT+2 (DST)</p> <p>Brazil Toll Free: 0800 608 9799 (Portuguese Service) E-mail: suporte.br@tp-link.com Service time: Monday to Friday, 9:00 to 20:00; Saturday, 9:00 to 15:00</p> <p>Poland Tel: +48 (0) 801 080 618 +48 223 606 363 (if calls from mobile phone) Fee: Depending on rate of different carriers. E-mail: support.pl@tp-link.com Service time: Monday to Friday 9:00 to 17:00 GMT+1 or GMT+2 (DST)</p> <p>France Tel: 0820 800 860 (French service) E-mail: support.fr@tp-link.com Fee: 0.118 EUR/min from France Service time: Monday to Friday, 9:00 to 18:00 *Except French Bank holidays</p> <p>Indonesia Tel: (+62) 021 6386 1936 Fee: Depending on rate of different carriers. E-mail: support.id@tp-link.com Service time: Sunday to Friday, 09:00 to 12:00, 13:00 to 18:00 *Except public holidays</p> <p>Russian Federation Tel: 8 (499) 754 5560 (Moscow NO.) 8 (800) 250 5560 (Toll-free within RF) E-mail: support.ru@tp-link.com Service time: From 9:00 to 21:00 (Moscow time) *Except weekends and holidays in RF</p>
--	---