



USER'S GUIDE

SOMO[®] 655

HANDHELD COMPUTER



COPYRIGHT NOTICE

Copyright © 2012-2013 Socket Mobile, Inc. All rights reserved.

Socket, the Socket logo, SoMo, SocketCare, SocketScan, Connect!Agent, and Go Wi-Fi! are trademarks or registered trademarks of Socket Mobile, Inc. *Bluetooth* and the *Bluetooth* logos are registered trademarks owned by *Bluetooth* SIG, Inc., U.S.A. and licensed to Socket Mobile, Inc. Wi-Fi and the Wi-Fi logo is a registered trademark of the Wi-Fi Alliance. Windows Mobile is a trademark of the Microsoft group of companies. All other brand and product names are trademarks of their respective holders.

The SoMo 655 includes technology licensed under European Community Registered Design Nos. 000745245-0001, 000745245-0002 and 000745245-0003.

Reproduction of the contents of this manual without the permission of Socket Mobile is expressly prohibited. Please be aware that the products described in this manual may change without notice.

Feel free to contact Socket Mobile at:

Socket Mobile, Inc.
39700 Eureka Drive
Newark, CA 94560-4808
USA

www.socketmobile.com/contact

Other than the above, Socket Mobile can assume no responsibility for anything resulting from the application of information contained in this manual.

Please refrain from any applications of the SoMo 655 that are not described in this manual. Please refrain from disassembling the SoMo 655. Disassembly of this device will void the product warranty.

You can track new product releases, software updates and technical bulletins by visiting the Socket Mobile website at: www.socketmobile.com



IMPORTANT SAFETY INSTRUCTIONS

Please read and follow these safety instructions before using your device for the first time, and save them for future reference.

- Keep away from extremely hot, cold or humid conditions.
- Avoid using in dusty environments.
- Do not allow the device to get wet.
- Avoid strong force, shock or vibrations.
- Do not open your device. Any attempts to open this device will void the warranty.
- Do not place objects on top of the device.
- Avoid removing the battery without turning off the device.
- Do not charge the device in extremely hot or cold conditions.
- Please only use the supplied USB synchronization cable.
- Please do not use other chargers or AC adapters, as these may damage your device.
- Do not remove microSD or CF cards while they are being accessed.
- Do not use this device in damp, wet or rainy conditions.
- Do not insert metal objects into the sync/charging port of the SoMo.
- Keep the SoMo and its accessories away from children.

Table of Contents

1 Introduction	7
Package Contents	8
Hardware Features.....	9
Product Registration	11
SocketCare™ Extended Warranty	11
Socket Third-Party Accessories Recommendation (STAR)	12
Power Management Software	12
Synchronization Software	12
Software Development Kit (SDK)	12
2 Getting Started.....	13
STEP 1: Install the Battery	13
STEP 2: Charge the Battery	14
STEP 3: Turn On Your SoMo 655	15
STEP 4: Install Synchronization Software on Host PC	15
STEP 5: Connect to Host Computer.....	16
STEP 6: Set Up Your Device Partnership	17
Getting Started Wizards.....	18
Change Language	19
Register SoMo 655	20
Configure Mode Switch.....	21
Configure CF/microSD slots	24
Set up Data Capture Triggers	24
Set up SocketScan 10	25
Sprite Backup Trial	25
MobiScan Rapid Configuration Tool.....	26

Foxit PDF Reader	26
3 Using the SoMo 655	27
Stylus	27
Finger Swiping	27
Mode Switch	27
LED Indicators	28
Today Screen	29
Start Screen	29
Wireless Radio Manager	30
SoMo 655 Power Plus Battery Friendly® Utility	32
Backlight Settings	34
Voice Recorder	35
Adding a USB Keyboard/Mouse	36
Checking the SP (Service Pack) Version of Your Unit.	36
Online Help	37
4 Managing Wi-Fi Connections	38
Microsoft Wireless Zero Configuration (WZC)	39
Go Wi-Fi!	43
5 SocketScan Plug-In for Scanners and Readers	49
STEP 1: Assign a Trigger Button.....	50
STEP 2: Start SocketScan Plug-in.....	51
STEP 3: Insert the Card.....	52
STEP 4: Start Application.....	52
STEP 5: Scan or Read Data	52
Appendix A Specifications	53
Appendix B Care and Maintenance	55

Cleaning the SoMo 655 or SoMo 655DXS:	55
Cleaning the SoMo 655Rx (antimicrobial version):	55
Carrying or Storing the SoMo:	55
Appendix C Go Wi-Fi! Advanced Features	56
Appendix D Resetting the SoMo 655	64
Appendix E Upgrading the ROM Image	69
Appendix F Troubleshooting	72
Appendix G Technical Support	73
Limited Warranty	74
Disclaimer	75
Limited Software Warranty	75
Regulatory Compliance	76

1 | Introduction

Thank you for purchasing the SoMo 655 handheld computer. The SoMo 655 is a durable, Windows Embedded Handheld powered device that can help your business increase the productivity of mobile workers, improve the visibility of data in the field, and automate manual processes.



There are multiple configurations to suit different types of applications:

Model	Configuration	Target Industry
SoMo 655	Standard	Various
SoMo 655Rx	Antimicrobial with Extended Battery	Healthcare
SoMo 655DXS	Security: No wireless radio or microphone	Secure/private applications

Ready to Customize






The SoMo 655 can be deployed out of the box with a wide range of Socket Mobile or third-party peripherals because it comes pre-loaded with the following software:

Pre-Loaded Applications and Utilities	Pre-Loaded Socket Mobile Software
<p>Microsoft Software:</p> <ul style="list-style-type: none"> Office Mobile (optional¹): Word / Excel / PowerPoint / OneNote Mobile Web/Communications: Outlook Mobile, IE Mobile Synchronization: ActiveSync / Windows Mobile Device Center Client Media: Windows Media Player Mobile .NET Compact Framework v3.5 installed Additional Applications: Calculator, Notes, Tasks 	<p>Data Capture:</p> <ul style="list-style-type: none"> SocketScan™ Plug-in for barcode / RFID / magnetic stripe reader cards SocketScan 10 for Bluetooth barcode scanners
<p>3rd Party Software:</p> <ul style="list-style-type: none"> Foxit PDF reader SOTI MobiScan Agent for automated WLAN configuration Sprite Backup (Trial version) 	<p>WLAN Management:</p> <p>Go Wi-Fi! for advanced management</p> <p>Power Management:</p> <ul style="list-style-type: none"> Power Plus Battery Friendly® utility Mode Switch utility CPU performance utility

¹ Office Mobile is included only on select SoMo 655 versions.

Package Contents

All SoMo 655, SoMo 655Rx, and SoMo 655DXS configurations come with the following items:

 <p>The image shows a black handheld computer with a color screen displaying a Windows Mobile interface. The screen shows the date 'Monday, June 18, 2012', 'Wi-Fi: Available', 'No unread messages', 'No tasks', and 'No upcoming appointments'. At the bottom of the screen are 'Calendar' and 'Contacts' buttons. The device has a physical keyboard with a central trackball and four function keys labeled F2, F3, and F4. The 'socket mobile' logo is visible at the bottom of the device.</p>	 <p>The image shows a black, pen-like stylus with a silver-colored tip and a silver-colored band near the top.</p>	 <p>The image shows a black rectangular lithium-ion battery. The top of the battery has the 'socket.' logo and 'L' marking. The bottom of the battery has a barcode and the text '20-01146-00A WD: 0701-24355'.</p>
<p>SoMo 655 Handheld Computer</p>	<p>Stylus</p>	<p>Lithium-ion Battery</p>
 <p>The image shows a black USB sync cable. One end is a standard USB-A connector, and the other end is a custom connector for the handheld computer.</p>	 <p>The image shows a black AC adapter with a power cord and three different interchangeable power heads for different international plug types.</p>	
<p>USB Sync Cable</p>	<p>AC Adapter*</p>	

In addition, this package comes with a **Certificate of Authenticity** and a **Quick Start Guide**.

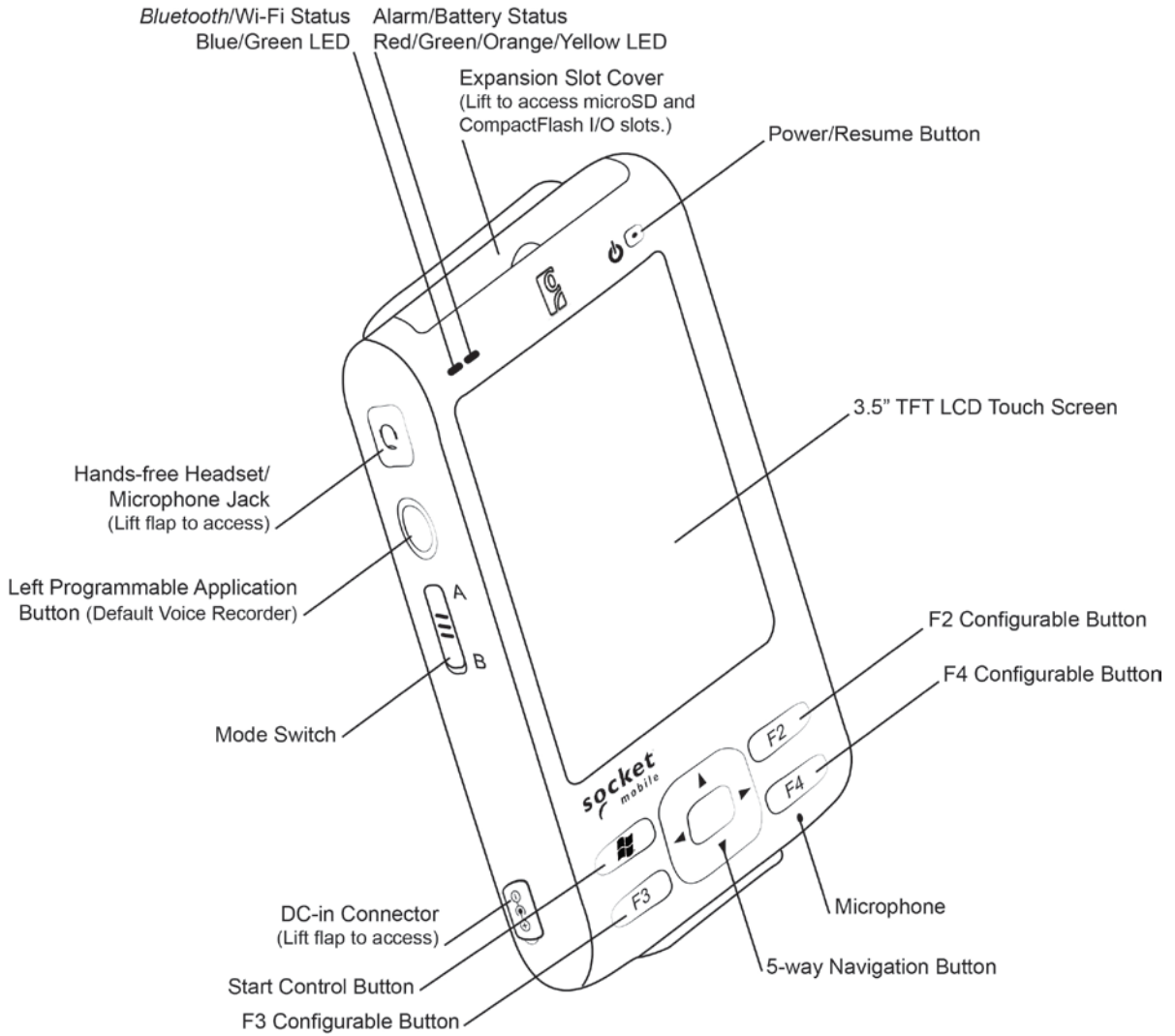
*Configuration dependent



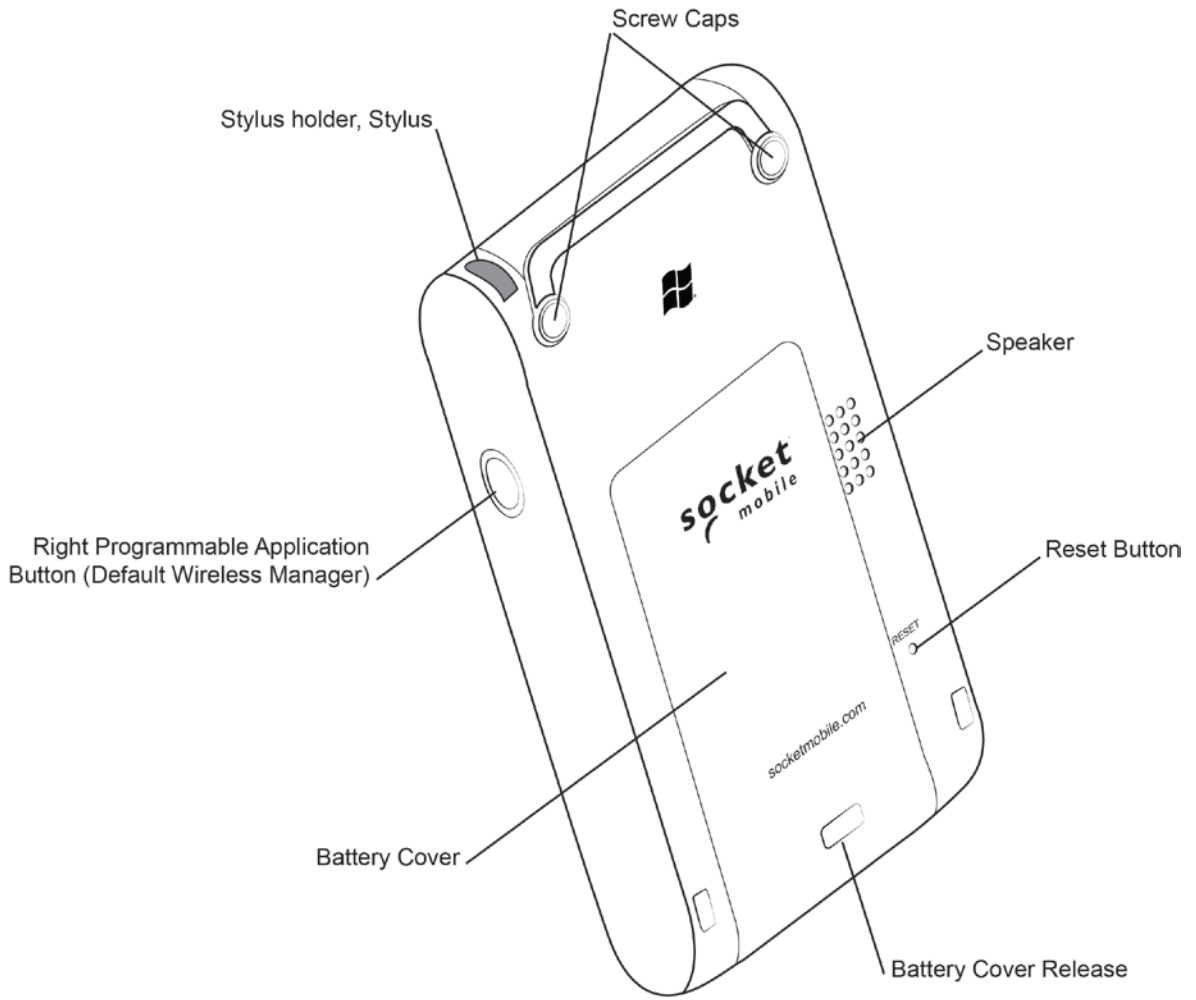
NOTE: The optional Sync-Charge Cradles (SKU# HC1700-1394, SKU# HC1701-1395) or Four Bay Charging Cradles (SKU# HC1702-1396, SKU# HC1703-1397) can be purchased separately at <http://ww1.socketmobile.com/products/handheld-computers/accessories-hc.aspx?cat=Charging>

Hardware Features

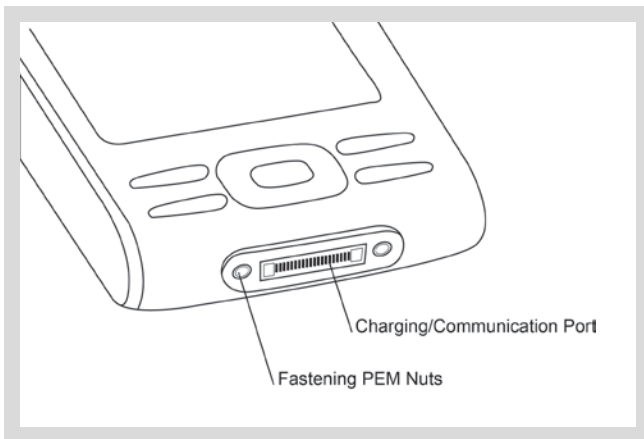
Front



Back



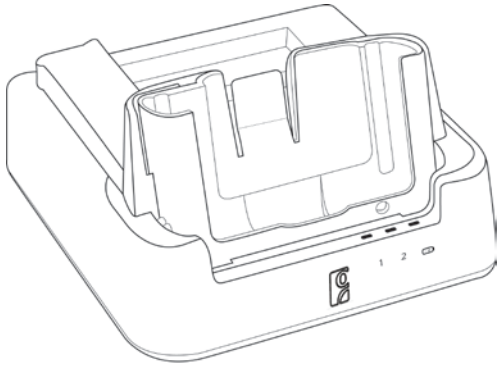
Bottom



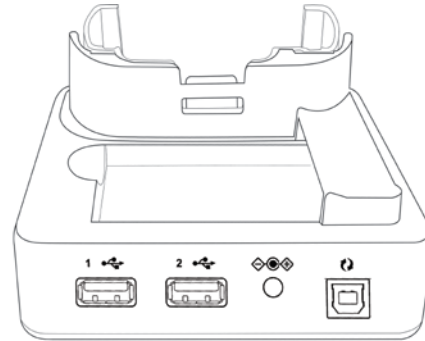
Optional Sync-Charge Cradle

With two USB ports, the cradle can act as a hub to connect a keyboard, mouse or other device. There is a compartment for charging a spare battery, which can be charged at the same time as a SoMo.

Front



Back



Buy cradles separately at:

<http://ww1.socketmobile.com/products/handheld-computers/accessories-hc.aspx?cat=Charging%20/%20Sync>

Socket offers a broad range of charging accessories for the SoMo, including durable charging cradles, four bay chargers, car chargers, and more.

Certain USB devices may require additional software or drivers.

IMPORTANT: *The cradle for the SoMo 650 is NOT compatible with the SoMo 655.*

Product Registration

Socket highly recommends all customers register their products. Product registration is required to access technical support. Registered users also benefit from free service packs and updates.

If you have a connection to the internet with your SoMo, use the **Getting Started** wizard to register.

Or, register from any computer online at: <http://support.socketmobile.com/>

SocketCare™ Extended Warranty

SocketCare is an enhanced service program, purchasable from an Authorized SocketCare Reseller within 30 days of your SoMo purchase. Program features include:

- Faster turnaround for product repair, replacement, and support
- Exclusive access to technical support

For more information, please visit: <http://www.socketcare.com/>

Socket Third-Party Accessories Recommendation (STAR)

The **STAR Program** assembles third-party accessories that have been tested for compatibility with Socket products. Find featured products including keyboards, smart card readers, cases, and more at:

<http://ww1.socketmobile.com/products/star.aspx>.

The SoMo comes pre-loaded with software for STAR products from UIC, Pro Active and SocketSerial.



Socket also offers a wide range of accessories for the SoMo 655, including durable charging cradles, four bay chargers, car chargers, and more:

<http://ww1.socketmobile.com/products/handheld-computers/accessories-hc.aspx?cat=SoMo%20655>

Power Management Software

The SoMo 655 features the following power management software so you can optimize battery life according to your performance needs:

Software	Description
Socket Power Plus Battery Friendly® Utility	Performance optimization, analysis and troubleshooting utility
Mode Switch Utility	Configuration utility for the Mode switch

Synchronization Software

To synchronize your SoMo 655 to a host computer and to synchronize data (email, contacts, pictures, music and other applications), the host computer must be running **Windows Mobile Device Center** or **Microsoft ActiveSync**. (See detailed instructions on page 15.)

Software Development Kit (SDK)

The SDK provides flexible control via Application Programming Interfaces so developers can optimize hardware features of the SoMo 655 for their specific application and end user environment. Controllable hardware features supported by the SDK include:

- WLAN and Bluetooth wireless radios
- Socket Mobile CompactFlash barcode, RFID, and magnetic stripe readers
- Touch screen / backlight
- CompactFlash I/O and microSD slot management
- Audio, visual (LEDs), and vibrate notifications
- Audio volume and microphone
- Bottom connector pin-outs
- Power management / monitoring

For more information visit: <http://www.socketmobile.com/support/Developer/SoMo/>

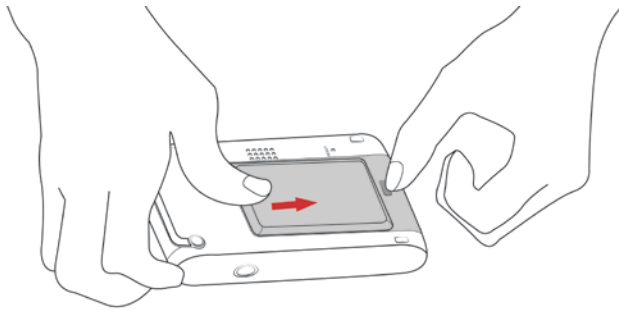
2 | Getting Started



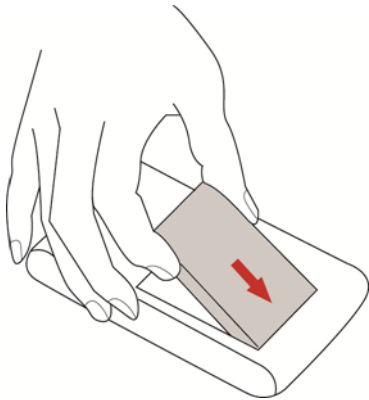
CAUTION: TO ENSURE PROPER OPERATION OF YOUR SOMO 655, FOLLOW THESE INSTRUCTIONS PRIOR TO USE. FAILURE TO FOLLOW THESE INSTRUCTIONS COULD RESULT IN YOUR SOMO TEMPORARILY NOT TURNING ON

STEP 1: Install the Battery

1. To remove the battery cover, press the release button on the bottom of the battery cover with your thumb. Use your opposite hand to slide the cover off.

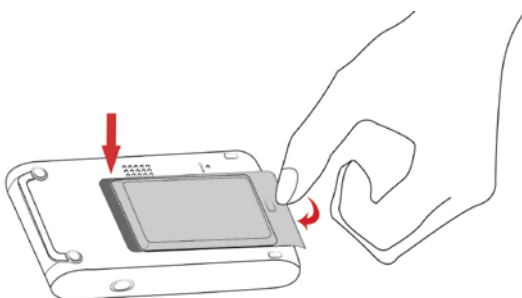


2. Place the Lithium-ion battery into the battery compartment with the contacts side first (barcode label facing up).



CAUTION: THERE IS RISK OF EXPLOSION IF BATTERY IS REPLACED BY AN INCORRECT TYPE. DISPOSE OF BATTERIES ACCORDING TO YOUR LOCAL REGULATIONS FOR BATTERY DISPOSAL.

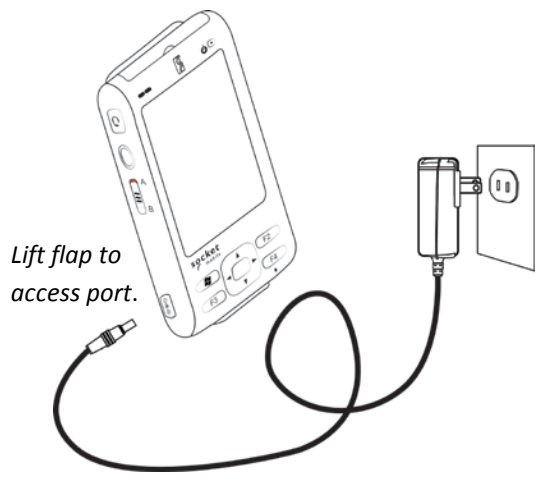
3. To replace the battery cover, align the top end of the cover carefully, leaving a small gap. Then slide the cover on till it clicks.



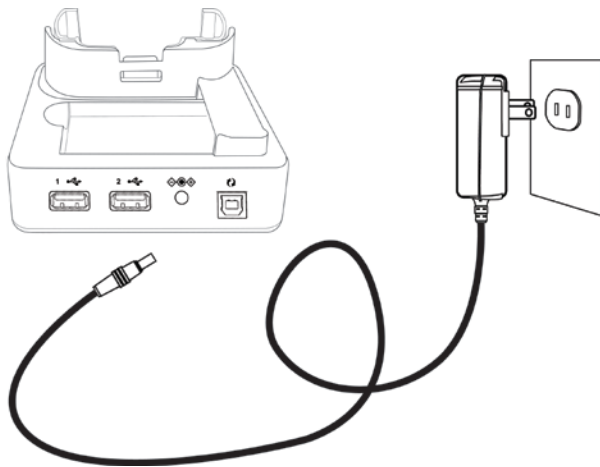
CAUTION: DO NOT PRESS THE BATTERY COVER DIRECTLY DOWN OR THE BATTERY DOOR SENSING SWITCH COULD BE DAMAGED.

STEP 2: Charge the Battery

OPTION 1: Charge the SoMo directly from an outlet using the 3A AC adapter that comes with it.



OPTION 2: Charge the SoMo using the optional Sync-charge cradle and the 3A AC adapter that comes with it.



The SoMo 655 should be charged for at least 4 hours before first use. Afterwards, charge the device as needed according to its battery level.

The right LED indicator on the front of the SoMo turns red while charging, then green when fully charged.

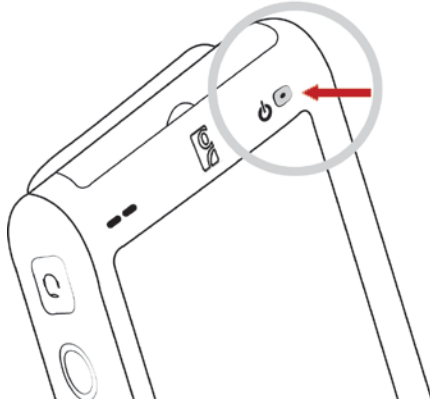
When changing the battery, do not remove the main battery for more than 5 minutes unless AC power is applied to the unit. Removing both AC power and the main battery for more than 5 minutes could result in losing some of your settings.

STEP 3: Turn On Your SoMo 655



For optimal results, make sure the SoMo 655 is fully charged before proceeding.

Press the **power** button.



STEP 4: Install Synchronization Software on Host PC




If you will be using a host computer, do not connect your SoMo 655 to the host PC until the synchronization software has been installed on the PC.

If your computer is running Windows 8/7/Vista

1. Enable **Windows Mobile Device Center** which comes installed on your computer. Download the latest version for free at: <http://www.microsoft.com/download/en/details.aspx?id=14>
2. Follow the instructions on the webpage to install the software.

Refer to the Microsoft website for information on how to use the software.

If your computer is running Windows XP/2000

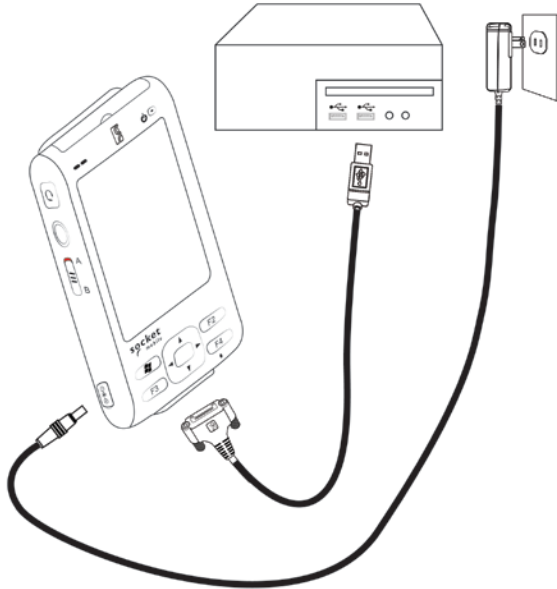
1. If your host PC runs Windows XP or 2000, install the latest version of **Microsoft ActiveSync** which is available free online at: <http://www.microsoft.com/download/en/details.aspx?id=15>
2. After installation, the ActiveSync icon will appear on your system tray (lower right corner of the screen). 

Refer to the ActiveSync online Help for information on how to use the software.

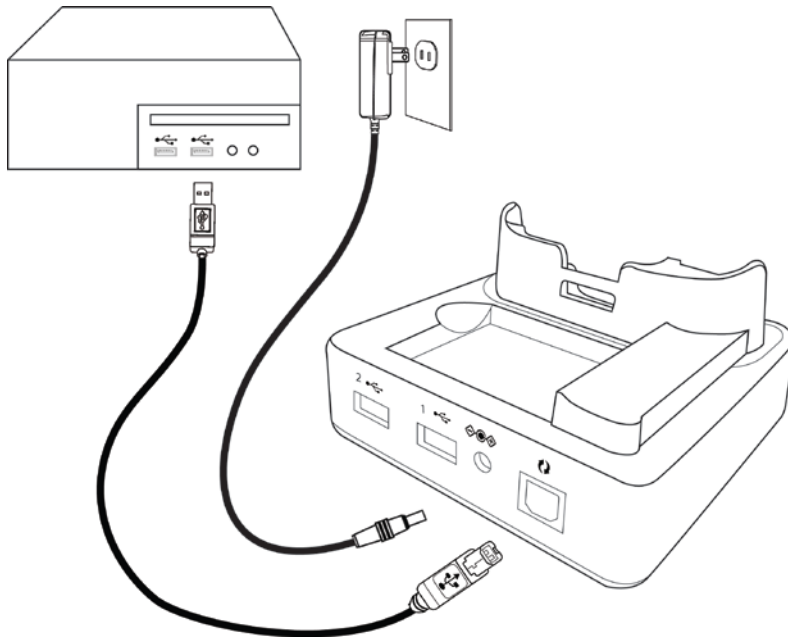
Once the host computer is running either **Windows Mobile Device Center** or **Microsoft ActiveSync**, you are ready to connect the SoMo to the host computer.

STEP 5: Connect to Host Computer

OPTION 1: Connect the SoMo to the host computer with the sync cable and plug in the AC adapter.



OPTION 2: Using the optional Sync-charge cradle and the Type B USB cable, connect to the host computer and plug in the 3 A AC adapter that comes included with the SoMo.



STEP 6: Set Up Your Device Partnership

Windows 8/7/Vista


1. When you connect your SoMo 655 to your computer for the first time, the **Windows Mobile Device Center** will automatically launch on your computer.
2. Click **Set up your device**.
3. Select the information you want to synchronize and click **Next**.
4. Follow the instructions in the remaining screens to complete the setup.



Windows XP/2000

1. When you connect your SoMo 655 to your computer for the first time, the **New Partnership** wizard will automatically launch on your SoMo 655.



NOTE: *If the wizard does not automatically launch on your SoMo 655, in the Start screen, open ActiveSync manually by tapping on ActiveSync .*

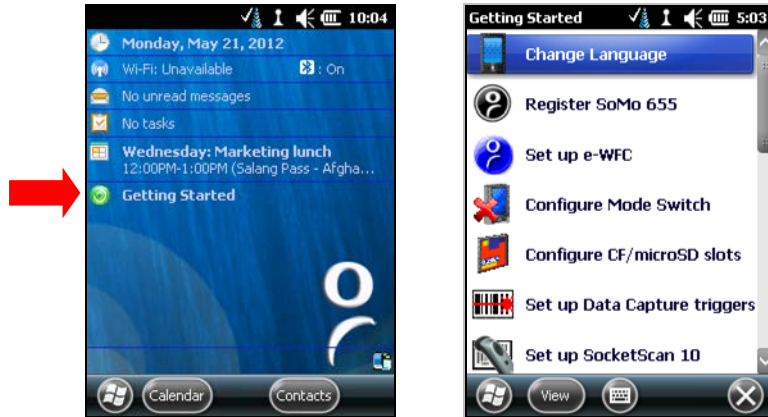


2. Follow the setup wizard to set up the partnership. Once completed, the first synchronization will start automatically.
3. After the synchronization is complete, you will see that your email, contacts, pictures and songs and other applications on your SoMo have been updated.

The next time you wish to use the synchronization software, just plug your SoMo 655 into your computer. The software will open automatically and update your device.

Getting Started Wizards

1. In the Today screen, tap Getting Started.
2. A list of wizards will appear. Some are generic for Windows Embedded Handheld 6.5, but some are specifically for the SoMo 655.



Some of the latest wizards included with Windows Embedded Handheld 6.5 include the following:

- Change Language
- Register SoMo 655
- Configure Mode Switch
- Configure CF/microSD Slots
- Set Up Data Capture Triggers
- Set Up SocketScan 10 (software for CHS barcode scanner)
- Sprite Backup Trial
- MobiScan Rapid Configuration Tool
- Foxit PDF Reader

Tap on a title to launch the wizard.



There is a wizard for installing Enhanced Wi-Fi Companion (e-WFC) software. However, Socket Mobile has released a new Wi-Fi software, known as Go Wi-Fi! Registered users can download the software from: <http://support.socketmobile.com/>

Change Language

The SoMo 655 operates in 12 languages. Use the **Change Language** wizard to choose a different language for your operating system. Follow instructions in the wizard to back up the language files to a microSD card.

Alternatively, registered users can download the language files from: <http://support.socketmobile.com>.

Once the language files are saved to a microSD card, change the language directly from the card. In addition, the files can be used to change multiple units.

Select a language by tapping on the radio button. Tap **OK**.

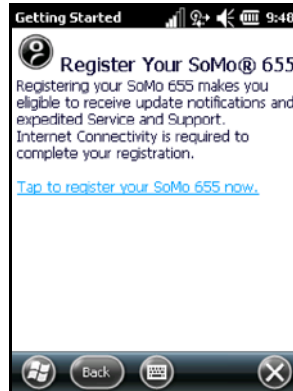
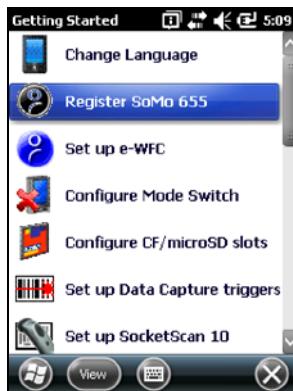


WARNING: THIS UTILITY WILL ERASE ALL USER DATA FROM THE SOMO AS WELL AS ALTERNATE LANGUAGE FILES. BEFORE YOU CHANGE THE LANGUAGE OF YOUR SOMO, PLEASE BACK UP THE LANGUAGE FILES ON A MICROSD CARD IF YOU THINK YOU MIGHT WANT TO CHANGE THE DEVICE LANGUAGE AN ADDITIONAL TIME.

Register SoMo 655

Socket highly recommends all customers register their SoMo devices. Registered users benefit from update notifications (including important service packs) and expedited service and support.

1. In the list of Getting Started wizards, tap **Register SoMo 655**.
2. In the next screen, tap on the link.
3. The wizard will begin. Make sure the SoMo has Internet access. Follow the wizard to register the SoMo.



Configure Mode Switch

The mode switch helps you extend the battery life. With **Profile A** set as the **Active** profile, the battery life can be optimized for performance during activity. With **Profile B** as the **Background** profile, the battery life can be optimized to save battery power during inactivity.

The Mode switch can also be used to prevent accidental input by disabling all buttons and the screen. Any applications or wireless connections running on the device will remain active. The **Mode Switch Utility** lets you change the default behavior of the switch.



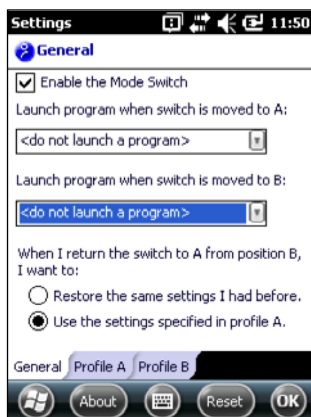
When the Mode switch is activated (in the A position), any connections or programs running on the SoMo will remain active. By default, the screen will turn off.

By default, the SoMo automatically suspends according to settings saved in the Power applet. To access the applet from the Start Screen, tap on Settings | System | Mode Switch.

1. In the list of Getting Started wizards, tap **Configure Mode Switch**.
2. Tap on the link in the wizard to access the **Change Mode switch settings**.
3. Use the utility to configure your settings.



Configuring the Mode Switch Settings



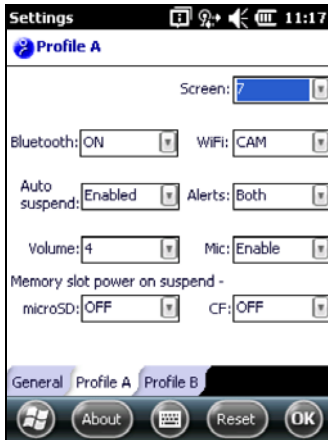
Step 1

Select the **Enable the Mode Switch** checkbox.

- To use the factory settings as the **Active** profile, tap the **Restore the same settings I had before** radio button. Then, tap on **Profile B** and skip to **Step 3**.
- To customize your settings, select the **Use the settings specified in profile A** radio button. Then, tap on the **Profile A** tab.

You may configure two profiles to suit your purposes. Typically, **Profile A** is the **Active** profile (optimized for performance), and **Profile B** is the **Background** profile (saves energy). However, you may configure it any way you like. You may select a particular program in each of the profiles to launch when the mode switch is employed. In both profiles, the WiFi remains connected resulting in an immediate and smooth transition from **Background** to **Active**.

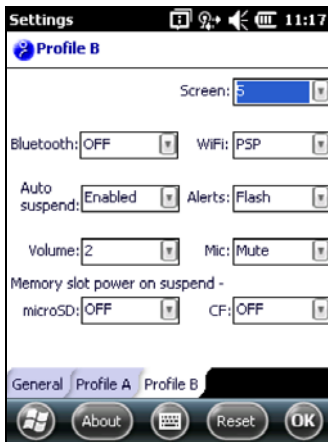
NOTE: When the Mode Switch is activated and the behavior is set to **Restore the same settings I had before**, the Bluetooth radio state will not be restored to **Discoverable** when expected. Instead, the state is restored to **ON, non-discoverable**. If the option **Use the settings specified in profile A** is used, the utility will set the Bluetooth radio to **Discoverable** if so configured. Profile B also correctly sets the Bluetooth radio state.



Step 2

When configuring **Profile A**, consider this the **Active** profile. Set your SoMo to optimal performance speed and use this profile for getting work done.

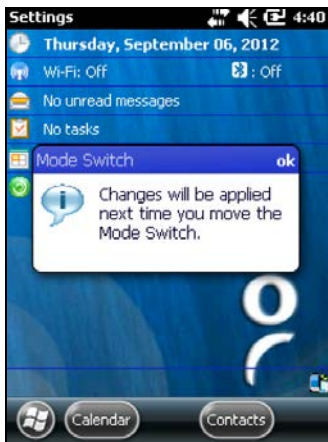
- Tap on each dropdown menu to configure settings. (See table below for settings information.)
- Tap on **Profile B** tab.



Step 3

When configuring **Profile B**, consider this the **Background** profile. Set your SoMo to save energy for when it is not in use, but you don't want to turn it off.

- Tap on each dropdown menu to configure settings. (See table below for settings information.)
- Tap **OK**.



Step 4

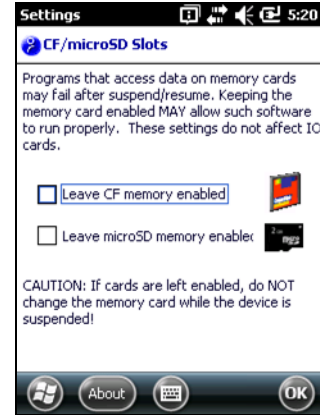
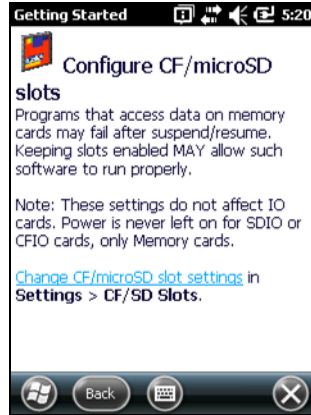
- Tap **ok**.
- Changes will be applied next time you move the Mode Switch.

Table 1	Options	Default Settings	
		Profile A	Profile B
Bluetooth	OFF		✓
	ON	✓	
	Discoverable		
Auto Suspend	Enabled	✓	✓
	Disabled		
Volume	5 <i>Loudest</i>		
	4	✓	
	3		
	2		✓
	1		
	0 <i>Mute</i>		
Screen Backlight Control	10 <i>Super Bright</i>		
	9		
	8		
	7 <i>Normal Bright</i>	✓	
	6		
	5 <i>Power Save</i>		✓
	4		
	3		
	3		
	1		
	0 <i>Backlight OFF</i>		
OFF <i>Screen Off</i>	N / A		
WiFi WLAN	CAM (fastest)	✓	
	PSP		✓
	OFF		
Alerts	Flash (LED)		✓
	Vibrate		
	Both	✓	
	Neither		
Mic	Mute		✓
	Enable	✓	
Memory Slot Power on Suspend microSD and CF	OFF	✓	✓
	ON		

Configure CF/microSD slots

If you insert a memory card into the SoMo and cannot access data from the card after the device suspends/resumes, use this utility to leave the card slot enabled even when the device has been suspended. In most cases you will not need to use this utility.

1. In the list of Getting Started wizards, tap **Configure CF/microSD slots**.
2. Tap on **Change CF/microSD slot settings**.
3. Check the appropriate box to enable a card slot after the SoMo suspends/resumes.
4. Tap **OK**.



CAUTION: ONLY LEAVE A SLOT ENABLED TO INSERT A MEMORY CARD. DO NOT LEAVE A SLOT ENABLED TO INSERT A SOCKET CF/microSD DEVICE OR OTHER I/O CARD.

Leaving a slot enabled when the SoMo is not in use can deplete the battery.

If you leave a slot enabled when the SoMo is powered on, do not remove or insert a card unless it is a memory card.

Set up Data Capture Triggers

For instructions on how to set up data capture triggers for Socket barcode scanners or RFID readers, please refer to Chapter 5.

Set up SocketScan 10

SocketScan 10 software enters data from Socket CHS Series 7 or CRS Series 9 barcode scanners into any application running on your SoMo.

1. In the list of Getting Started wizards, tap **Set up SocketScan 10**.
2. To install the application, tap on the link.
3. Choose where you would like the software installed. Tap **Install**. After installation, tap **OK**.

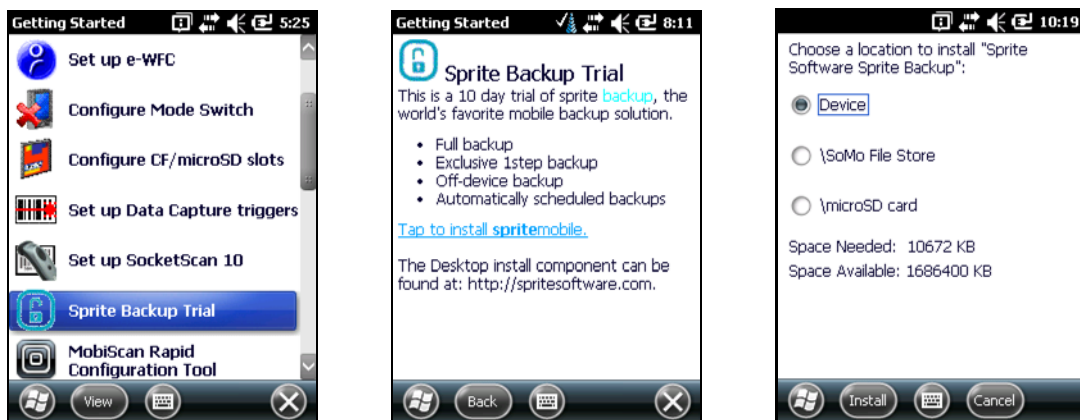


For instructions on how to use SocketScan 10 with the CHS barcode scanner, please refer to the documentation included with your version of the CHS.

Sprite Backup Trial

Includes a free 10-day trial of Sprite Backup software that lets you backup your data.

1. In the list of Getting Started wizards, tap **Sprite Backup Trial**.
2. To install the application, tap on the link.
3. Choose where you would like the software installed. Tap **Install**. After installation, tap **OK**.

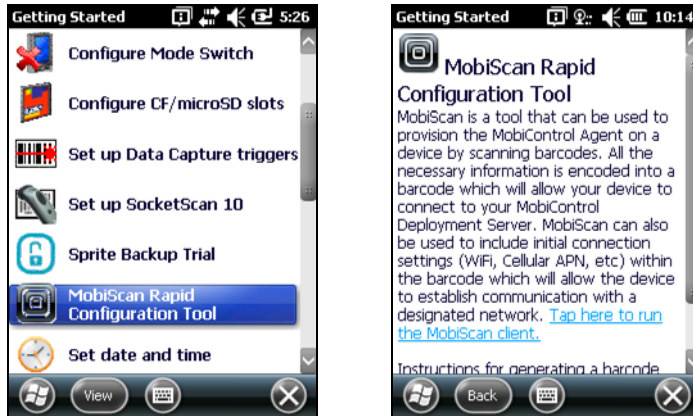


For more information about Sprite Backup, please visit:

<http://www.spritesoftware.com/products/sprite-backup/full-edition>

MobiScan Rapid Configuration Tool

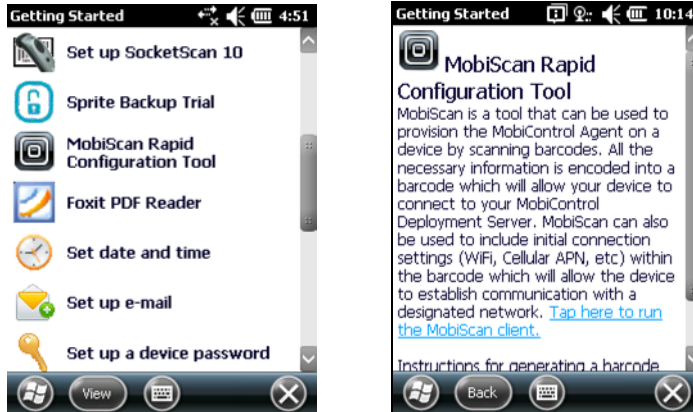
1. In the list of Getting Started wizards, tap **MobiScan Rapid Configuration Tool**.
2. Tap on the link. Follow the on-screen instructions to install the software.



For more information about SOTI MobiScan, please visit:
<http://soti.net/mc/help/Content/Manager/MobiScan.htm>

Foxit PDF Reader

1. In the list of Getting Started wizards, tap **Foxit PDF Reader**.
2. Tap on the link. Follow the on-screen instructions to install the software.



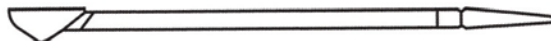
For more information about Foxit PDF Reader, please visit:
<http://www.foxitsoftware.com/products/mobilereader/windows/>

3 | Using the SoMo 655

This chapter explains how to use your SoMo 655 through its buttons, the Mode switch, stylus, finger swiping, Start screen, online Help, and the Radio Manager.

Stylus

Use the stylus in three ways.



- Tap an item: Use to select an option, similar to left-clicking a mouse.
- Tap and hold an item: Reveals a submenu, if available. It is similar to right-clicking a mouse.
- Drag: Hold the stylus against the screen and drag to highlight multiple items, or to move the position of an item. Similar to left-clicking and dragging a mouse.



A Tethered stylus 3 Pack (SKU# HC1646-1134) is available online at:

<http://ww1.socketmobile.com/products/handheld-computers/accessories-hc/details.aspx?sku=HC1646-1134>

Finger Swiping

The SoMo 655 supports finger swiping to scroll through lists. For example, you can swipe your finger vertically on the Start screen to flip through icons.

Mode Switch

The mode switch helps you extend the battery life. With **Profile A** set as the **Active** profile, the battery life can be optimized for performance during activity. With **Profile B** as the **Background** profile, the battery life can be optimized to save battery power during inactivity.

The Mode switch can also be used to prevent accidental input by disabling all buttons and the screen. Any applications or wireless connections running on the device will remain active. The Mode Switch Utility lets you change the default behavior of the switch.



The SoMo comes with the Mode switch disabled. To enable the Mode switch and configure the settings, use the Mode Switch Utility ([see Configure Mode Switch, page 21](#)).

Position A keeps your device activated. Position B puts your device in background mode.

The Mode switch is not related to the software lock function accessible from the Today screen.



← **Position A: ACTIVE** - All systems go unless configured differently by the user.

← **Position B: BACKGROUND** - When the Mode switch is enabled, the B position has default settings. By default, when moved to the B position, the screen will turn black, and the screen and all buttons on the sides and front of the SoMo will be disabled, including the power button. May be configured differently by the user.

LED Indicators

Bluetooth and Wi-Fi Radio Status* (Left LED)

Blue/Green LED Behavior (Left)	Meaning
Flashing blue	Bluetooth radio is on
Flashing green	Wi-Fi radio is on
Flashing blue and green	Bluetooth and Wi-Fi radios are on
OFF	Wireless radios are OFF or unit is in suspend mode

NOTE: The SoMo 655DXS model has no Bluetooth or Wi-Fi, therefore the left LED has no function in the DXS.

Alarm and Battery Status (Right LED)

Red/Green/Orange/Yellow LED Behavior (Right)	Meaning
Flashing red	Alarm/Notification or low battery notification: <20% charge remaining for 1500 mAh battery <15% charge remaining for 2600 mAh battery
OFF	Running on battery power or device powered off
Solid red light when connected to charger	Charging battery
Solid green light when connected to charger	Battery is fully charged
Flashing orange	Battery data is unavailable
Solid Yellow	Hazardous conditions exist (i.e., overheating) in which case the SoMo is programmed to shut down.

SoMo Behavior Under Low Battery Conditions	Remaining Charge for 1500 mAh Battery	Remaining Charge for 2600 mAh Battery
Low Battery Alert in title bar of Today screen and flashing red LED	20%	15%
Critical Battery Alert in title bar of Today screen and flashing red LED	10%	5%
SoMo will shut down to preserve data until the battery charged. The SoMo should be able to maintain a standby state for 160 hours.	5%	3%



To determine the battery life of the SoMo with your application, please visit:

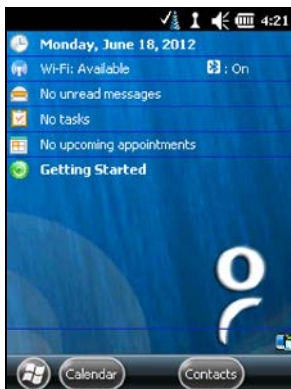
<http://www.socketmobile.com/products/handheld-computer/BatteryEstimator655/index655.html>

To learn about SoMo battery best practices, please visit:

- http://ww1.socketmobile.com/Libraries/Documents/Battery_Best_Practices.sflb.ashx
- http://support.socketmobile.com/FrontLinesGlobalSupport_Socket_Ext/SocketMobile/Attach/Answer3-0-34_CS-1006-%20%20Socket%20Customer%20Notice%20-%20Batteries%20discharging%20quickly%20200100524.pdf

Today Screen

The Today screen is like the homepage for the Windows Embedded Handheld operating system. Access current data, utilities and applications from the Today screen. Also access the Start screen.



Start Screen

The **Start** screen can be accessed by tapping the **Windows logo**  or pressing the **Start Control** button (with the Windows flag on it).

From the **Start** screen, access the Today screen, settings, programs, Help topics, and more.



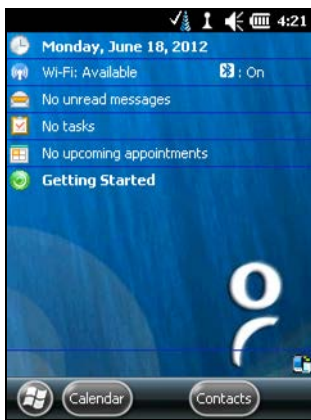
Wireless Radio Manager



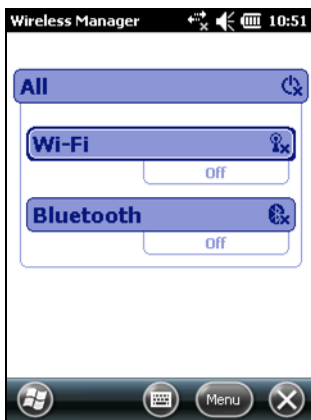
The SoMo 655 includes the Microsoft Wireless Manager by default. However, if you install Go Wi-Fi!, the Socket Radio Manager will appear instead (see next page).

Microsoft Wireless Manager

1. To open the **Microsoft Wireless Manager**, tap the **Wi-Fi and Bluetooth status** line in the Today screen. Alternatively, press the button on the right side of the SoMo.



2. In the Wireless Manager, an **X** appears next to the Wi-Fi or *Bluetooth* icon when the radio is off. Tap on the Wi-Fi or *Bluetooth* button to turn on one or the other. Or, tap on All to turn on both.



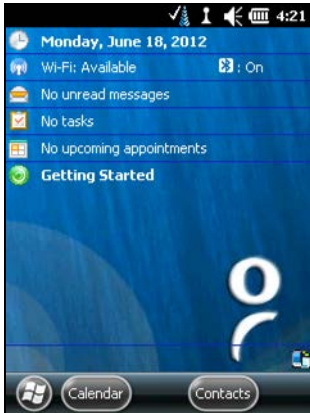
Windows Wireless Zero Configuration will automatically launch after Wi-Fi is turned on.

Socket Radio Manager



The Socket Radio Manager appears on SoMo devices with Go Wi-Fi! installed.

1. To open the **Socket Radio Manager**, tap the **Wi-Fi and Bluetooth status** line in the Today screen. Alternatively, press the button on the right side of the SoMo 655.



2. In the Radio Manager, a red X appears on the *Bluetooth* or *Wi-Fi* button when the radio is off. Tap on the button to turn it on.



Go Wi-Fi! automatically launches after Wi-Fi is turned on. See Chapter 4 for instructions.

Flight mode turns off Bluetooth and Wi-Fi. When flight mode is disabled, the previously running wireless radio(s) will resume.

SoMo 655 Power Plus Battery Friendly® Utility

This utility provides advanced power management and monitoring, and detailed information on SoMo performance.

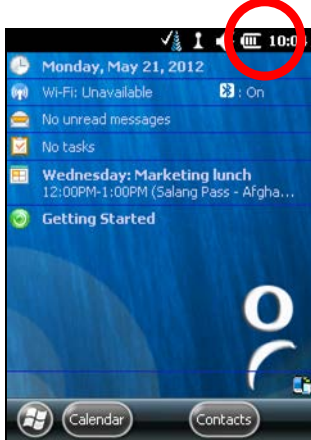


To learn more about this utility, please visit:

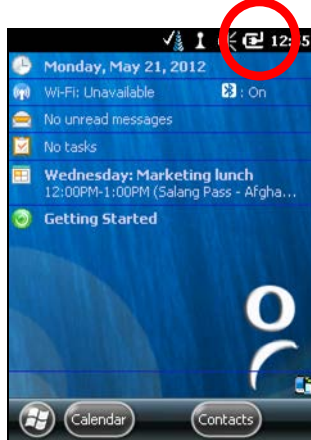
http://ww1.socketmobile.com/Libraries/Documents/SoMo_655_Battery_Friendly_Utility.sflb.ashx

1. In the Today screen, tap on the **Battery** icon or **Power Plug** icon. (These icons indicate whether the SoMo is running on battery power or connected to AC power.)

Battery icon



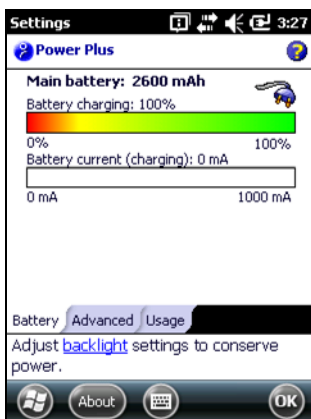
Power Plug icon



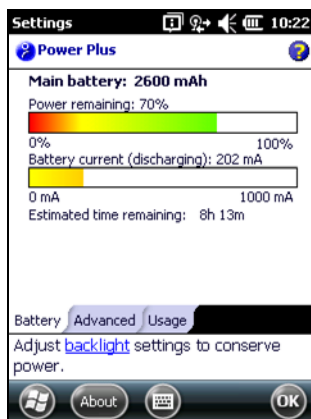
Alternatively, from the Start screen, tap **Settings | System | Power Plus**.

2. The Power Plus utility will appear, displaying the Battery screen.

Battery charging



Battery discharging





Current usage typically ranges from 150 mA to over 450 mA depending on how the SoMo is being used.

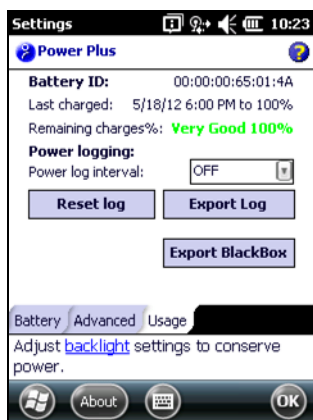
After a suspend/resume, it can take up to 30 seconds for the applet to make a reasonable determination of time remaining.

If the battery is changed and the SoMo reset, it may take several minutes to report the battery current usage and estimated time remaining.

3. Tap on the **Advanced** tab. If desired, configure the SoMo to automatically turn off if not used for a specific amount of time.



4. Tap on the **Usage** tab. Information about the battery ID, last charging session, and charge remaining is provided.



If desired, enable a power log:

- Power log interval: Select the duration of each power logging interval.
- Reset log: Tap to clear the power log data.
- Export CSV file: Tap to export the power log as a CSV file.

5. Tap **OK**.

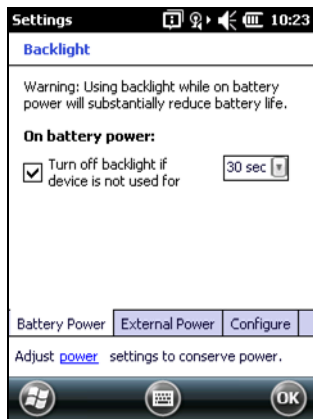


To determine the battery life of the SoMo with your application, please visit:
<http://www.socketmobile.com/products/handheld-computer/BatteryEstimator655/index655.html>

Backlight Settings

Adjust the backlight and power settings to maximize the battery life of your SoMo 655.

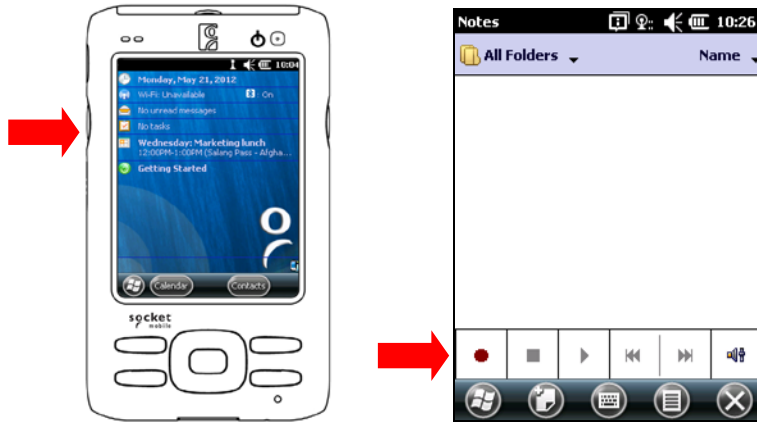
1. From the Start screen, tap **Settings | System | Backlight**.
2. The Backlight utility will appear. Adjust the settings as desired and tap **OK**.



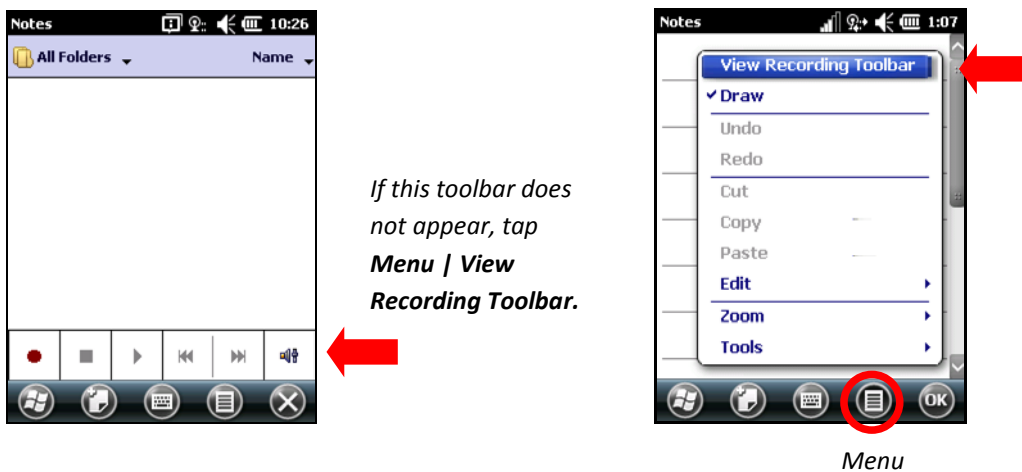
Voice Recorder

By default, the left programmable application button is set for Voice Recorder.

1. Press left programmable button.
2. Tap on the **red circle icon** to begin recording sound.



If the toolbar does not appear at the bottom of the screen,



To manually access Notes from the Start screen, tap on Notes.

Adding a USB Keyboard/Mouse

Dock the SoMo in the cradle and plug the keyboard and/or mouse into the cradle's two USB ports.

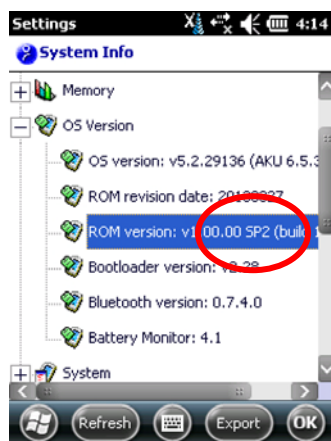


Checking the SP (Service Pack) Version of Your Unit.

From the Start screen, tap Settings | System | System Info.





Tap OS Version to view information and look for the ROM version.



Service Pack version = SP2

Online Help

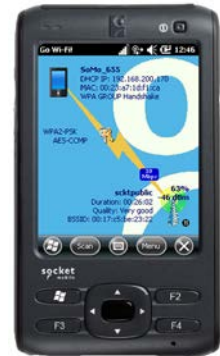
Your SoMo 655 contains online help files. They can be accessed in two ways:

1. In the Start screen, tap Help icon .
2. Tap on the Help icon  if your application has one.

4 | Managing Wi-Fi Connections

The SoMo 655 offers two applications to manage your wireless connections. Each comes with its own tools and interface:

1. **Microsoft Wireless Zero Configuration (WZC)** is a utility for managing Wi-Fi connections from your SoMo 655 handheld computer.
2. **Go Wi-Fi!** (HIGHLY RECOMMENDED) is available on the Socket Mobile website. It offers the following advantages over WZC:
 - Advanced authentication (including PEAP-GTC, EAP-TTLS, LEAP, and EAP-FAST)
 - WMM including transmit power control
 - Socket profile editor with advanced functionality
 - An At-a-Glance graphical user interface with detailed connection information



Software	Installation status
Wireless Zero Configuration	Pre-installed on device
Enhanced Wi-Fi Companion	Pre-loaded on device but optional to install (Socket Mobile recommends upgrading to Go Wi-Fi! which offers advanced security features.)



*Registered users can download Go Wi-Fi! software from <http://support.socketmobile.com/>
For information on advanced features of Go Wi-Fi! please refer to Appendix C.*

[To jump to instructions on how to use Go W-Fi!, go to page 44.](#)

Microsoft Wireless Zero Configuration (WZC)

This utility is pre-installed on the device.

Turning on the Wi-Fi Radio

By default, the SoMo uses WZC to manage wi-fi connections. To manage your wireless connections using WZC, access **Wireless Manager**.

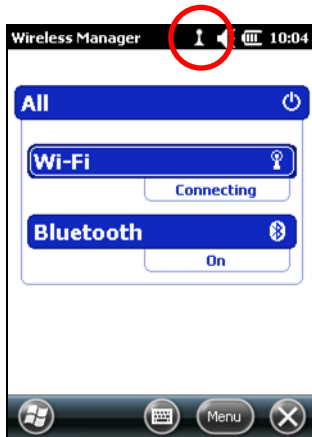
1. Open the **Wireless Manager** by tapping on the Wi-Fi and *Bluetooth* status line in the Today screen. Or, press the button on the right side of the SoMo 655.



2. In the Wireless Manager, an X will appear on the Wi-Fi button to indicate that the Wi-Fi radio is off. Tap on the button to turn on the radio. The X will disappear.







The Wi-Fi status icon appears at the top of the screen. The icon varies based on your connection status. To view the icon variations, please refer to the chart below.



Tap All and the Bluetooth and Wi-Fi radios will both be disabled. However, the manager remembers which wireless radio(s) were running so when you later tap All, the previous settings resume.

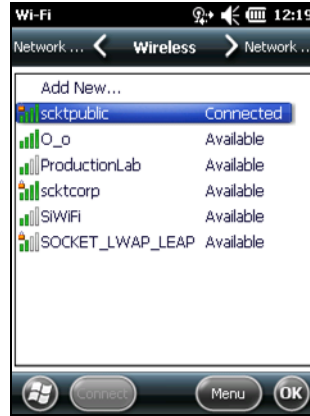
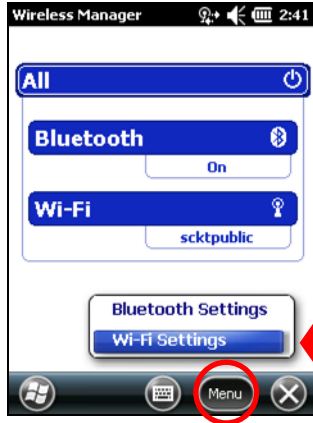
Wi-Fi Status Icons

One of these icons appears at the top of every screen when Wi-Fi Companion is running.

	Networks available but not connected
	Connected to a network, data passing
	Active connection
	No active connection




Wi-Fi Settings

Wi-Fi Settings displays a list of WLAN networks found in range. To access Wi-Fi Settings, go to **Wireless Manager**, then tap on **Menu**. Select **Wi-Fi Settings** from pop-up menu.



Wi-Fi Settings

Wi-Fi Settings Icons

	WLAN is a device-to-device (ad-hoc) network.
	Signal strength of strongest access point/ad hoc radio (non-secure)
	Signal strength of strongest access point/ad hoc radio (secure)

Finding and Connecting to a WLAN

Ask your network administrator for the necessary security settings for your WLAN. If the WLAN uses 802.1x, WPA or WPA2, install authentication certificate(s) before you connect. Refer to the Wi-Fi Companion User's Guide for instructions on the Socket certificate utility.

1. In the **Wireless Manager**, tap on **Menu**. Select **Wi-Fi Settings** from pop-up menu.
2. Wi-Fi Settings will appear, listing detected WLANs in range. Tap on any WLAN in the list to configure and connect .

Tap on the **Menu** to add a new network, remove settings, edit configurations, access advanced settings, or turn off wi-fi.



A wizard will launch to help you create a profile for your network. Complete the wizard, entering the security settings obtained from your network administrator.



If your WLAN does not appear in the list, tap and hold your stylus on a WLAN in the list. In the pop-up menu, tap **Add New...**. A wizard will launch to help you create a profile for the selected SSID. Complete the wizard, entering the security settings obtained from your network administrator.

After a profile is saved, if the WLAN is in range, the SoMo will automatically try to connect to it. To connect to another network in the list, tap and hold your stylus on the WLAN. In the pop-up menu, tap **Connect**.

Go Wi-Fi! Software

Socket Mobile recommends installing Go Wi-Fi! for its advanced security features and graphical user interface. Once installed, Go Wi-Fi! will automatically launch after you turn on the Wi-Fi radio.

Installing the Software

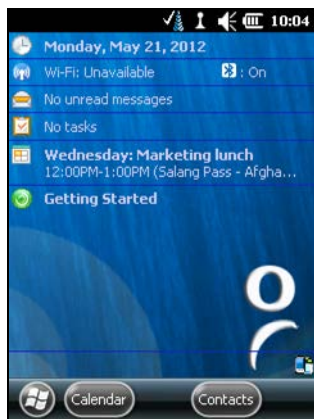


Download: <http://www.socketmobile.com/support/downloads/handheld-computer/somo-655/>

1. Make sure your SoMo 655 is running Service Pack 2 (SP2) or later. Go to **Start > Settings > System > System Info > OS Version > ROM version**. You can get SP2 from the same URL above.
2. Transfer the CAB file to your SoMo by using a memory card, the sync cable/cradle or by downloading it directly onto the SoMo.
3. Use File Explorer to browse to the CAB file. Tap on the file.

Turning on the Wi-Fi Radio

1. To open the Go Wi-Fi! **Radio Manager**, tap on the Wi-Fi and *Bluetooth* status line in the Today screen. Or, press the button on the right side of the SoMo 655.



2. In the Radio Manager, an **X** will appear on the Wi-Fi button to indicate that the Wi-Fi radio is off. Tap on the button to turn on the radio. The **X** will disappear.



The Wi-Fi status icon will appear at the top of the screen. The icon varies based on your connection status.



The Radio Manager is only available when Go Wi-Fi! is managing wireless connections.

To get to the At-a-Glance screen of Go Wi-Fi!, tap on the Wi-Fi status icon. Alternatively, tap the ribbon along the top, then tap on the tower icon in the drop-down menu.



Tap on Enable Flight Mode and both Bluetooth and Wi-Fi radios will be disabled. However, the manager will remember which wireless radio(s) were running so when you later tap Disable Flight Mode, the previous settings will resume.

Wi-Fi Status Icons

One of these icons appears at the top of every screen when Go Wi-Fi! is running.

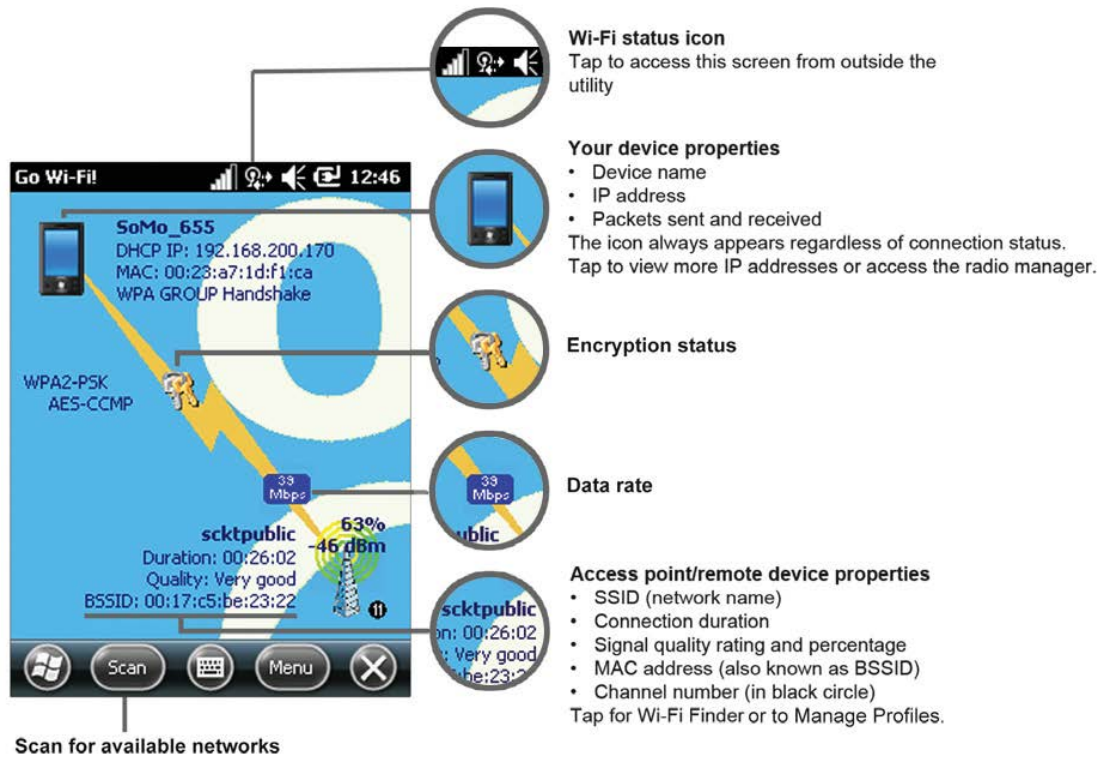
	Associated or Connected. Number of bars indicates signal strength.
	Networks available.
	Searching for networks.
	Networks out of range but configured.

At-a-Glance Screen of Go Wi-Fi!

The graphical user interface of the At-a-Glance Screen of Go Wi-Fi! displays detailed connection information, automatic power save options, as well as useful troubleshooting and diagnostic tools for networking professionals.

To get to the At-a-Glance screen of Go Wi-Fi!, tap on the Wi-Fi status icon. Or, tap the ribbon along the top, then tap on the tower icon in the drop-down menu.

The screen content varies depending on your connection status.




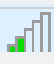


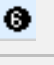


The At-a-Glance screen is only available when Go Wi-Fi! is managing wireless connections.

Scan Results

The Scan Results displays a list of WLAN networks found in range. To access the Scan Results from the At-a-Glance screen of Go Wi-Fi!, tap the **Scan** button at the bottom. Alternatively, tap on the **large tower icon** in the bottom right corner.




Scan Results Icons

	Current connection
	Signal strength of strongest AP (access point)/ad hoc radio
	WEP encryption, WPA (PSK), WPA (TKIP), WPA2 or 802.11x
	No encryption
	Channel number
	Profile saved
	802.11b, 802.11g, 802.11n

Finding and Connecting to a WLAN

Ask your network administrator for the necessary security settings for your WLAN. If the WLAN uses 802.1x, WPA or WPA2, install authentication certificate(s) before you connect.

1. In the At-a-Glance screen of Go Wi-Fi!, tap on the tower icon  or tap the **Scan** button
2. Scan Results will launch, listing detected WLANs in range. Tap on any WLAN in the list to view additional properties.

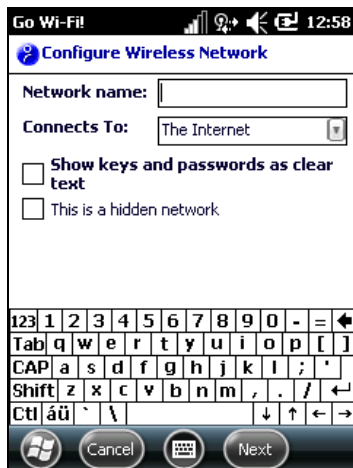


If desired, tap on the **Type** or **Sort by** drop-down menus to change how the list is displayed.

If your WLAN is not listed, tap **Refresh** at the bottom of the screen.

If Scan Results cannot find your WLAN because its SSID (network name) is hidden, tap **New** at the bottom of the screen.

A wizard will launch to help you create a profile for your network. Complete the wizard, entering the security settings obtained from your network administrator.





For Go Wi-Fi!, a Socket profile editor will launch with dynamic configuration and advanced security options.

If your WLAN does not have a profile (i.e., no folder icon is shown next to it), tap and hold your stylus on the WLAN in the list. In the pop-up menu, tap **Connect**.



A wizard will launch to help you create a profile for the selected SSID. Complete the wizard, entering the security settings obtained from your network administrator.

3. After a profile is saved, if the WLAN is in range, the SoMo will automatically try to connect to it. To connect to another network in the list, tap and hold your stylus on the WLAN. In the pop-up menu, tap **Connect**.

5 | SocketScan Plug-In for Scanners and Readers

SocketScan software sends data from your Socket barcode scanner, RFID reader or magnetic stripe reader into any application running on the SoMo 655. This lets you use Socket data collection peripherals without having to program custom applications. The software comes pre-loaded on the SoMo 655.

This chapter contains generic instructions for using SocketScan on the SoMo 655 with these products:

- CF Mag Stripe Reader Card Series 4
- CF Scan Card Series 5
- CF RFID Reader Card Series 6

For specific instructions, please refer to the User's Guide for your specific Socket data collection product, available online at: <http://www.socketmobile.com/support/downloads/>



For instructions on SocketScan 10 software for Socket Mobile Bluetooth barcode scanners, please refer to the User's Guide for your specific scanner model.

STEP 1: Assign a Trigger Button

This step is NOT required for the CF Mag Stripe Reader Card.

Method 1:

Use this method for the CF Scan Card or CF RFID Reader Card 6E with any version of Windows Mobile.

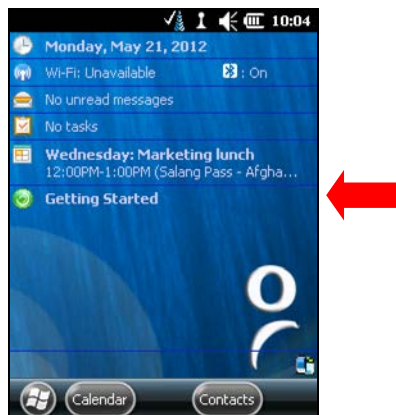
1. From the Start screen, tap **Settings | Personal | Buttons**.
2. **Select a button.** From the Button list, tap to select a button to trigger your scanner. (For best ergonomics, the left or right button is recommended.)
3. **Assign a program.** In the drop-down menu, select **SocketScan**.
4. Tap **OK**.



Make sure you choose SocketScan and NOT SocketScan 10.

Method 2:

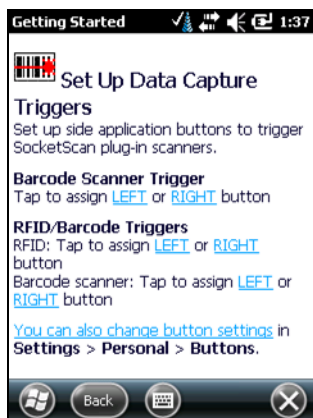
1. In the Today screen, tap **Getting Started**.



2. In the list, tap **Set up Data Capture triggers**.



3. In the next screen, tap either **LEFT** or **RIGHT** in the appropriate section to select the button you want to use to trigger your device.




4. The SoMo will automatically set up the trigger button and send a confirmation message to your inbox.

STEP 2: Start SocketScan Plug-in

Press the trigger button that you assigned to start SocketScan.

Alternatively, from the Start screen, tap **SocketScan Plug-in folder**  | **SocketScan**.

A SocketScan icon  will appear at the bottom of the Today screen indicating that no data collection device has been inserted.

STEP 3: Insert the Card

1. Open the slot cover at the top of the SoMo 655 and then insert the card into the appropriate slot. Do not insert the card backwards or force the card in too hard.
2. When SocketScan is running, an icon will appear at the bottom of the Today screen. Make sure the proper icon appears to indicate that your device is ready to collect data.



Icon	Meaning
	No Socket data collection device detected.
	Ready to read magnetic stripe data with the CF Mag Stripe Reader Card 4E
	Ready to scan barcodes with the CF Scan Card 5C/ 5E2/5P or CF RFID Reader-Scan Card 6E/6P
	Ready to scan barcodes with the CF Scan Card 5X/5XRx
	Ready to read RFID tags with the CF RFID Reader Card



Do not insert the card before starting SocketScan. If you insert the card before starting SocketScan, no icon will appear.

STEP 4: Start Application

Start the application that you want to enter data into (e.g., Excel Mobile). Make sure a document, spreadsheet, or text field is open. Place the cursor where you want to enter data from the scanner/.

STEP 5: Scan or Read Data

Scanning/RFID: Press the trigger button to scan a barcode or read an RFID tag. Please refer to your scanner manual for the correct technique.

When scanning a barcode, make sure the scanning beam covers the entire width of the barcode. For example, try scanning the barcode to the right. (Note: Print out before scanning.)

Mag Stripe: Swipe a magnetic stripe card through the slot, with the magnetic stripe facing the SoMo 655.

When data is read, it will appear in your document where you positioned the cursor.



Wait for the “Good Scan” indication before you scan more data. If you try to scan too fast, the device can lock up until you stop scanning.

If the data does not appear how you expect it and you are using Excel Mobile, check the cell formatting.

Appendix A

Specifications

Processor	Marvell PXA270M 624MHz CPU
Memory	128 MB SDRAM, 4 GB Flash, up to 32 GB additional with microSD slot SoMo File Store: Non-volatile memory for device applications/ configurations can survive a hard reset of device. Features Auto-Run support, ideal for provisioning deployments.
Display	3.5", 65K colors TFT LCD, 16 bit-per-pixel, 240(w) x 320(L) resolution, white LED backlight, glass analog resistive touch panel for use with stylus or fingertip
Audio	High quality built in speaker and microphone support VoIP / Speech recognition / PTT / Dictation applications
Connectors	Power jack barrel connector 16 pin communications/charging connector USB 1.1 Host & 2.0 Client 3.5mm headset jack with support for voice & stereo
Wireless Connectivity (not included with SoMo 655DXS)	Bluetooth + V2.0 + EDR Class 2 IEEE® 802.11 b/g/n Data Rates (802.11b/g/n): Up to 135 Mbps Frequency Range: Country dependent (channels 1- 13); 2.412 – 2.472 GHz Antenna: internal
Mass Storage & Expansion Slots	microSD, CompactFlash I/O. Supports up to 32GB of external memory 2.0 Client/1.1 Host
USB	USB 1.1 Host & 2.0 Client (x2) (Cradle only)
Battery	Standard: 3.7V 1500 mAh, rechargeable, Lithium-ion Extended: 3.7V 2600 mAh rechargeable, Lithium-ion
Dimensions	With standard battery: 5.00 x 2.94 x 0.81 inches (127 x 74.60 x 20.6 mm) Weight: 6.25 oz (177 g) (including stylus) With extended battery: 5.00 x 2.94 x 0.98 inches (127 x 74.60 x 25 mm) Weight: 7.20 oz (204 g) (including stylus)
Operating Temperature	0° to 50° C (32° to 120° F)
Storage Temperature	-25° to 75° C (-13° to 167° F)
Humidity	95% non-condensing
Antimicrobial Rating (SoMo 655Rx only)	JIS Z2801:2000 Test – 2.49 on Methicillin resistant Staphylococcus aureus (MRSA) – 6.07 when cleaned with Sani-Cloth® Plus brand disposable cloth wipes

Drop Specification	Multiple 1 m (3.3 ft) drops to vinyl-covered concrete With optional DuraCase protective case (sold separately): Multiple 1.3 m (4.3 ft) drops to vinyl-covered concrete
ESD Specification	+/- 8kV air discharge, +/- 8kV direct discharge
Operating Systems Available	Microsoft Windows Embedded Handheld 6.5 (previously known as Windows Mobile Classic 6.5)
Pre-Loaded Socket Software	<p>Data Capture:</p> <ul style="list-style-type: none"> • SocketScan™ Plug-in for CompactFlash barcode / MSR / RFID / UIC683 Smart Card reader cards • SocketScan 10 for Socket Mobile Bluetooth barcode scanners <p>WLAN Management: Go Wi-Fi!</p> <p>Power Management:</p> <ul style="list-style-type: none"> • Power Plus Battery Friendly® utility • Mode Switch utility • CPU performance utility
Pre-Loaded Applications and Utilities	<p>Microsoft Software:</p> <ul style="list-style-type: none"> • Office Mobile (optional¹): Word / Excel / PowerPoint / OneNote Mobile • Web/Communications: Outlook Mobile, IE Mobile • Synchronization: ActiveSync / Windows Mobile Device Center Client • Media: Windows Media Player Mobile • .NET Compact Framework v3.5 installed • Additional Applications: Calculator, Notes, Tasks <p>3rd Party Software:</p> <ul style="list-style-type: none"> • Foxit PDF reader • SOTI MobiScan Agent • Sprite Backup (Trial version) <p>¹Office Mobile is included only on select SoMo 655 versions</p>

Appendix B

Care and Maintenance



For important safety and usage instructions, please refer to page 3.

Cleaning the SoMo 655 or SoMo 655DXS:

- With the device switched off, clean the SoMo 655 by wiping it with a soft, clean cloth that is lint-free and slightly moistened. Do not allow the earpiece, microphone, speaker, card slots, sync/charging port or other metal surfaces to get wet.
- Do not wipe the SoMo with any corrosive liquid or coarse objects. This can damage the outer surface of the device.

Cleaning the SoMo 655Rx (antimicrobial version):

- Socket recommends Sani-Cloth® Plus brand disposable cloth wipes as the standard disinfectant wipe for the SoMo 655Rx handheld computer. Doing so will increase the JIS Z2801:2000 antimicrobial rating from 2.49 to 6.07.
- Do not use bleach-based or Dispatch® brand cloth wipes, as they negate all antimicrobial properties that have been added to the device.

Carrying or Storing the SoMo:

- Do not leave the SoMo in extremely high or low temperature environments.
- Remove the battery of the SoMo if it is not going to be used for a long period of time. Store the SoMo and its battery in a cool, dark, and dry place.

Appendix C

Go Wi-Fi! Advanced Features



*The features described in this appendix are for **ADVANCED USERS ONLY**.*

For basic connection instructions, please refer to Chapter 4.



Registered users can download Go Wi-Fi! software from <http://support.socketmobile.com/>

View IP Addresses

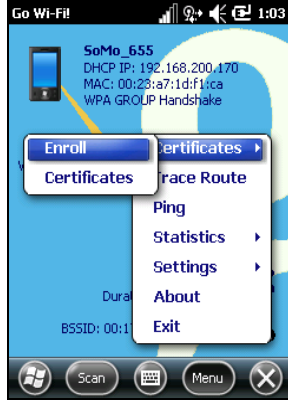
You can only view IP address data if the SoMo is actively connected to a WLAN network.

1. In the main screen of Go Wi-Fi!, tap on the device icon. In the pop-up menu, tap **IP Addresses**.
2. The IP Addresses screen will appear.
3. If your network uses DHCP, the **Renew** and **Release** functions will be enabled. Tap **Renew** to get a new IP address and/or update related lease data. Tap **Release** to release the IP address from the DHCP server.



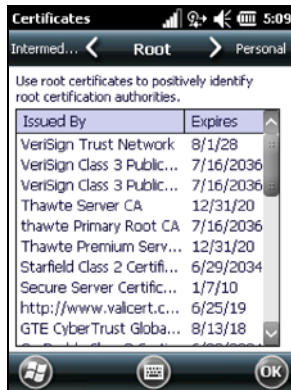
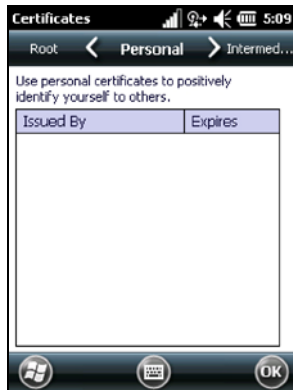
Enroll Certificate

1. In the main screen of Go Wi-Fi!, tap **Menu | Certificates | Enroll**.
2. Use the Personal Certificate Enrollment utility to install a personal certificate for 802.1x networks running EAP-TLS authentication.



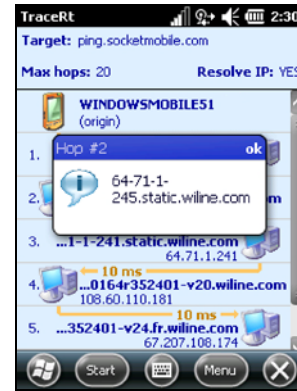
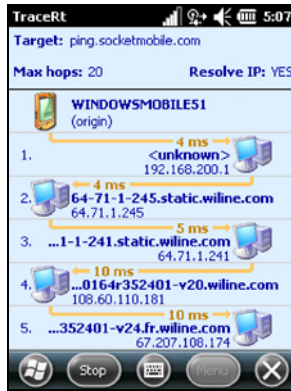
Manage Certificates

1. In the main screen of Go Wi-Fi!, tap **Menu | Certificates | Certificates**.
2. Use the utility to manage your root, personal and intermediate authentication certificates. To view a certificate, tap and hold the stylus on a certificate in the list. In the pop-up menu, tap **View**.



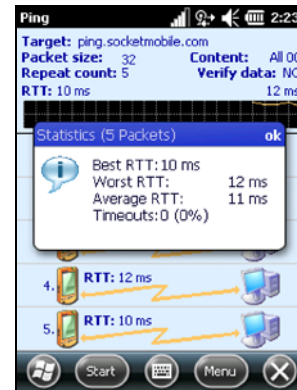
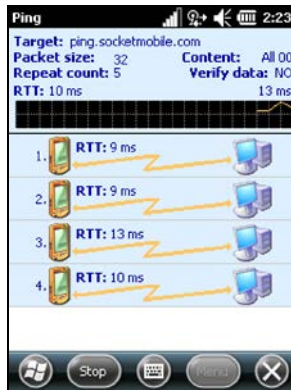
Trace Route

1. In the main screen of Go Wi-Fi!, tap **Menu | Trace Route**.
2. Tap **Menu | Configure**. Enter the appropriate settings and tap **OK**.
3. Tap **Start**. Tap **Stop** to end the trace at any time, or let the trace run until complete. A prompt will report the statistics. Tap **ok**. To view the full host name of any of the hops, tap on the hop in the list.



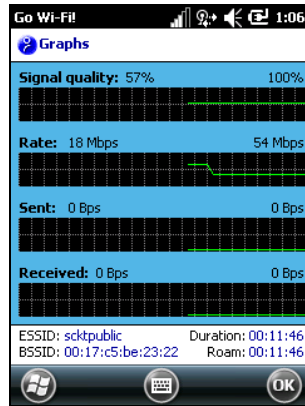
Ping

1. In the main screen of Go Wi-Fi!, tap **Menu | Ping**.
2. Tap **Menu | Configure**. Enter the appropriate settings and tap **OK**.
3. Tap **Start**. To end the test, tap **Stop**. A prompt will report the statistics. Tap **ok**.



Statistical Graphs and Tables

1. In the main screen of Go Wi-Fi!, tap **Menu | Statistics**.
2. In the pop-up menu, tap **Graphs** to view scrolling line graphs of the signal quality, rate, and sent and received data rates. Alternatively, tap **Tables** to view tables of information about the current connection. Tap on the tabs and scroll to view all the data.



The screenshot displays the 'Stats' screen, which contains a table of connection statistics. The table has two columns: 'Name' and 'Current'. Below the table, there are tabs for 'TCP', 'UDP', 'ICMP', and 'Interface'. At the bottom, there are 'Reset' and 'Refresh' buttons.

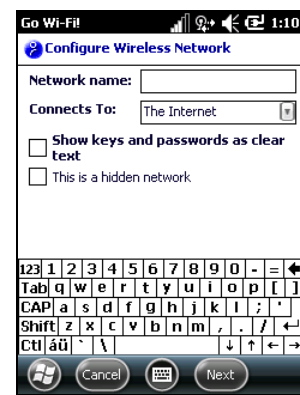
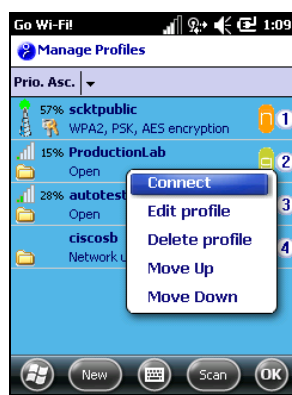
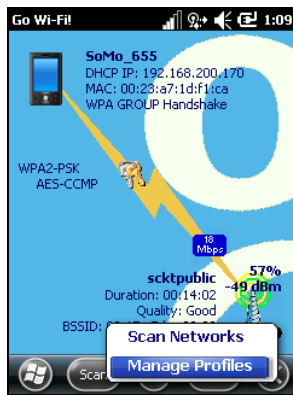
Name	Current
Datagrams received	10958
Datagram send requests	5988
Received datagrams delivered	5469
Default TTL	128
Reassemble timeout	60
Routes in routing table	12
Received address errors	10
Datagrams with no route	4
IP Addresses on this computer	4
Interfaces on computer	3
Forwarding enabled	2

Additional information at the bottom of the screen includes: ESSID: scktpublic, Duration: 00:13:05, BSSID: 00:17:c5:be:23:22, and Roam: 00:13:05. The bottom navigation bar includes 'Reset', 'Refresh', and 'OK' buttons.


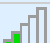





Manage Profiles

The Manage Profiles screen displays the configured networks (i.e., profiles) and allows you to rank the networks in order of priority for connection attempts.

1. In the main screen of Go Wi-Fi!, tap and hold the stylus on the radio tower icon. In the pop-up menu, tap **Manage Profiles**. Alternatively, tap **Menu | Settings | Manage Profiles**.
2. A list of network profiles will appear. To configure a new network profile, tap **New** and follow the Configure Wireless Network wizard. To search for available networks, tap **Scan**.
3. Tap and hold the stylus on any profile in the list to reveal a pop-up menu that enables you to quickly connect to, edit or delete the selected profile. If multiple profiles are listed, you can also set their order of priority by moving profiles up or down in the list. The SoMo will try to connect to the #1 ranked network, then #2 etc. until a connection is made.

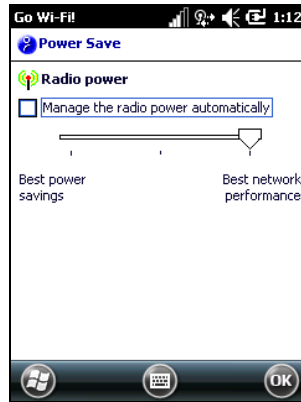


Profile Icons

	Current connection. This icon appears only when multiple profiles are listed.
	Signal strength of strongest AP (access point)/ad hoc radio
	WEP encryption, WPA (PSK), WPA (TKIP), WPA2 or 802.1x
	No encryption
	Priority ranking.
	Profile saved
	802.11b, 802.11g, 802.11n

Power Save

1. In the main screen of Go Wi-Fi!, tap **Menu | Settings | Power Save**.
2. For automatic power management, check the box **Manage the radio power automatically**. This will enable best performance when charging and best power savings when running on battery power. Alternatively, uncheck the box and use the slider to manually choose your power setting. Tap **OK**.

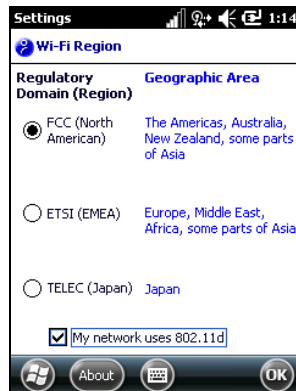


Wi-Fi Region

1. In the main screen of Go Wi-Fi!, tap **Menu | Settings | Wi-Fi Region**.
2. Select your region. If your network uses 802.11d, check the box at the bottom of the screen. Tap **OK**.

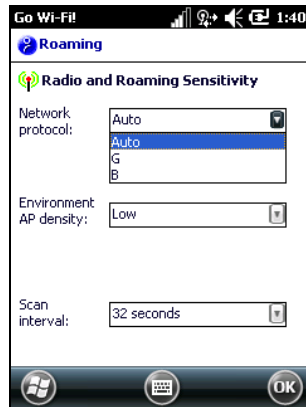


If your Wi-Fi environment supports multiple hidden networks (i.e., access points that don't broadcast their SSID, make sure to uncheck the box My network uses 802.11d.



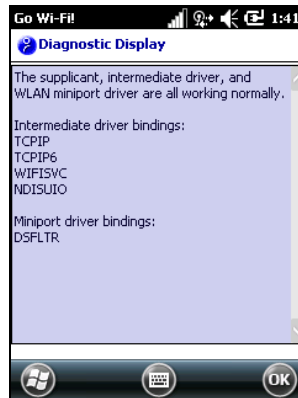
Roaming

1. In the main screen of Go Wi-Fi!, tap **Menu | Settings | Roaming**.
2. Enter the appropriate settings and tap **OK**.
 - **Network protocol:** Select **Auto** for the software to automatically choose the appropriate mode, select **G** for 802.11g or select **B** for 802.11b.
 - **Environment AP density:** Select the relative density of access points in your environment to adjust how aggressively the SoMo will roam from one access point to another.



Diagnostics

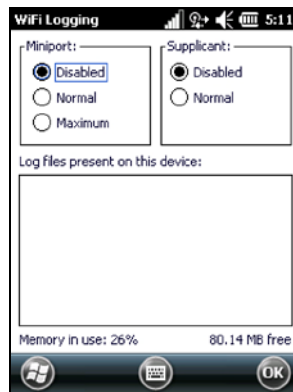
In the main screen of Go Wi-Fi!, tap **Menu | Settings | Diagnostics**. The binding information is for Socket Mobile technical support only and not for use by the end user.



Logging

Use this feature to help Socket Mobile technical support troubleshoot Wi-Fi issues you may be experiencing.

1. In the main screen of Go Wi-Fi!, tap **Menu | Settings | Logging**.
2. If any log files are listed, delete them. For **Miniport**, select **Normal** or **Maximum**. For **Supplicant**, select **Normal**. Tap **OK**.
3. Reset the SoMo then perform the operations that caused Wi-Fi issues.
4. After the issue has occurred, return to the Wi-Fi Logging screen. Disable both the **Miniport** and **Supplicant**. Note the names of the TXT log files. Tap **OK**.
5. Reset the SoMo.
6. Send the TXT files to Socket Mobile technical support.
7. Erase the TXT files from the SoMo.



Appendix D

Resetting the SoMo 655

The SoMo 655 supports the three levels of reset defined by Microsoft for Windows Mobile powered devices:

- **Warm boot** - sometimes called a “soft reset”
- **Cold boot** - sometimes called a “hard reset”
- **Clean boot** - sometimes called a “factory reset”

Each of these resets clears different levels of storage data and impacts the hardware differently.

Additionally, removing the battery and any external sources of power from the SoMo 655 will result in the equivalent of a warm or cold boot (see table).

The following Table summarizes the system impact under these modes of operation:

State of SoMo 655 After:	All Installed Applications and Registry Settings	Running Programs	Data Associated with Running Programs	Date and Time
Warm Boot	No impact	Stopped	Lost	No impact
Cold Boot	No impact	Stopped	Lost	Lost
Clean Boot	Removed	Stopped	Lost	Lost
Battery & external power removed for less than 5 minutes (same as warm boot)	No impact	Stopped	Lost	No impact
Battery & external power removed for more than 10 minutes (same as cold boot)	No impact	Stopped	Lost	Lost



The SoMo has a power backup that maintains the date and time if the battery and all external power sources are removed. If the SoMo does not have a battery or external power source for 10 minutes, the date and time will be lost.

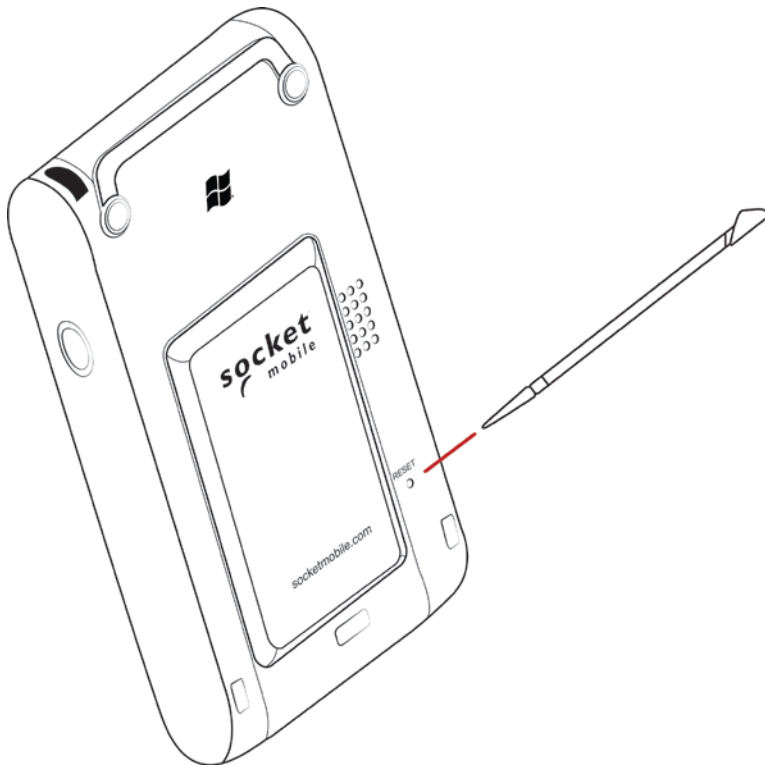
Warm Boot

A warm boot is like rebooting a computer. It is designed to close all applications and clear out temporary data associated with running programs. No files are deleted. A warm boot is the lowest level of reset, (i.e., it clears the least amount of the device state).

It can also be used to close application programs that are not responding. Since Windows Mobile powered devices do not normally shut down an application after it is started, this is one way to close all applications.

To perform a warm boot:

Using the tip of your stylus, lightly press the Reset button on the back of your SoMo 655 and then release.



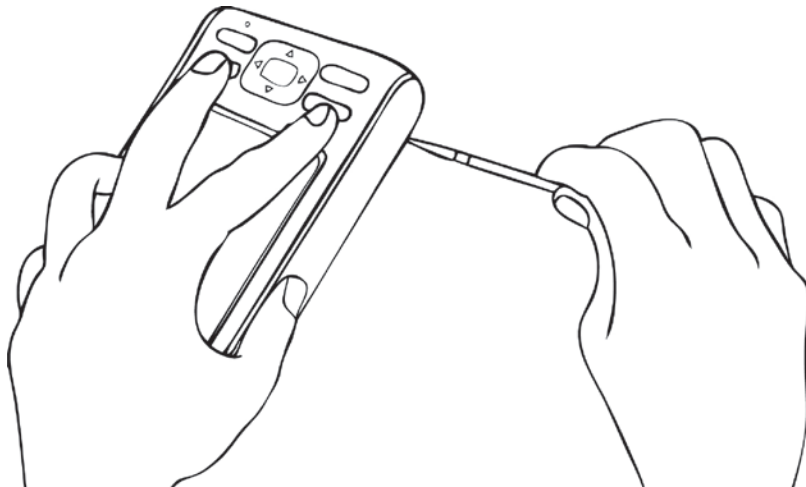
Cold Boot

A cold boot is designed to clear all processor states, running programs, and user data. It also drives the hardware reset line to the processor, thereby clearing all system states, including the date and time. This reset should be used to remove the operating system from a “hung” or “frozen” state because of a fatal program or operating system error.

A cold boot will clear all user-installed settings, applications, and data from RAM (Random Access Memory), but any applications or configurations saved in the SoMo File Store will remain. It is useful for clearing some states that are not normally cleared with a warm boot.

To perform a cold boot:

1. Provide power to the SoMo using the AC adapter.
2. Press and hold the **Start Control** button and **F2 Configurable** button (buttons closest to the screen).
3. While holding the two buttons, use the tip of your stylus to lightly press and release the **Reset** button on the back of your SoMo 655.
4. Release the Start Control button and F2 Configurable buttons.



It is recommended that you hold the SoMo 655 upside-down in your right hand. Press the Start Control button and F2 Configurable button (buttons closest to the screen) with the index and middle fingers. Hold the stylus in your other hand to press and release the reset button. Release the two buttons.

5. A Socket Splash Screen will appear then disappear.
6. The launch of the Today screen will indicate the completion of the cold boot.



Socket Splash Screen



Today Screen

Clean Boot



CAUTION: A CLEAN BOOT IS MORE POWERFUL THAN A WARM OR COLD BOOT. IT WILL DELETE ALL USER APPLICATION FILES AND FOLDERS. WHEN YOU PERFORM A CLEAN BOOT, FORMATS, PREFERENCES AND OTHER SETTINGS INCLUDING DATE AND TIME ARE RESTORED TO THEIR FACTORY DEFAULTS. ALL DATA, RECORDS AND ENTRIES, EXCEPT THOSE STORED IN ROM OR THE FILE STORE WILL BE ERASED.

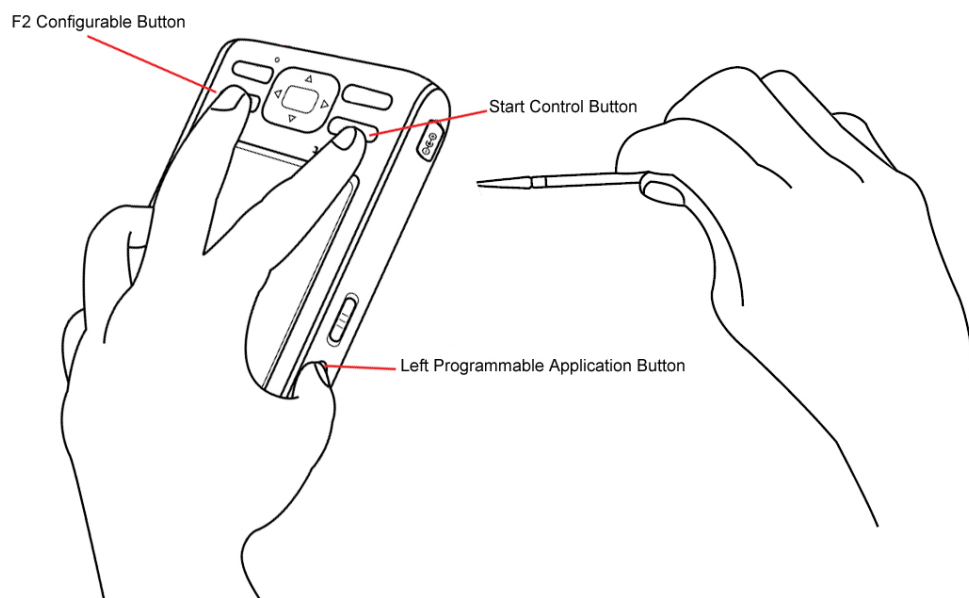
A clean boot reverts the device to its factory default settings (or the latest service pack ROM update). All installed programs, data and registry settings will be cleared, except those saved in the SoMo File Store. A clean boot also drives the processor with a hardware reset, thus clearing all system states, including the date and time.



If you set a security password on the SoMo 655 and forget it, a clean boot will remove the password setting.

To perform a clean boot:

1. Provide power to the SoMo using the AC adapter.
2. Press and hold three buttons, the **Start Control** button and **F2 Configurable** button (buttons closest to the screen), and the **Left Programmable Application** button.
3. While holding the three buttons, use the tip of your stylus to lightly press and release the **Reset** button on the back of your SoMo 655.



It is recommended that you hold the SoMo 655 upside-down in your left hand. Press and hold the Start Control button and F2 Configurable button (buttons closest to the screen) with your left index and middle finger and the Left Programmable Application Button with your left thumb. Hold the stylus in your right hand to press and release the reset button.

4. The screen will go blank and the SoMo 655 will begin to revert to its factory default settings.
5. Continue to hold the three buttons for several seconds until the Socket splash screen appears and you hear the Socket jingle.



IMPORTANT: KEEP HOLDING THE RIGHT PROGRAMMABLE APPLICATION BUTTON UNTIL THE SOCKET JINGLE SOUNDS! OTHERWISE THE CLEAN BOOT WILL FAIL.



Socket Splash Screen

6. Release all three buttons.
7. The Windows Embedded Handheld splash screen will appear.
8. The Windows Welcome wizard will prompt you to set up Windows Mobile. Follow the instructions on your screen.
9. After setting up Windows Embedded Handheld, the Today screen will appear, and the SoMo 655 will be ready to use.



Today Screen

Appendix E

Upgrading the ROM Image

Advanced Users Only!

Upgrades are available free to registered users. Log in to submit a request at:
<http://support.socketmobile.com>.



WARNING: YOU WILL LOSE ALL DATA FILES AND APPLICATIONS DURING THE UPGRADE PROCESS!

STEP 1: Power the Device

Socket highly recommends that you plug the SoMo 655 into an external power source using the charging cable/cradle. Alternatively, make sure the SoMo battery is adequately charged.

STEP 2: Back up Data on the Device

If you have any data on the SoMo 655, please back it up to an external location before you run the update.

STEP 3: Transfer Files using a Memory Card



IMPORTANT: IT IS NOT RECOMMENDED YOU TRANSFER FILES USING ACTIVESYNC OR THE WINDOWS MOBILE DEVICE CENTER!

The directory SOMO655 containing the ROM image files must be moved to the SoMo 655 with a microSD or CF memory card that is formatted in FAT12 or FAT16. Make sure your memory card has at least 40 MB of free space.



Most higher-capacity cards are formatted by default in FAT32, which is not supported. SDHC cards are not supported in Windows Embedded Handheld.



If you want to reflash from a CF card, make sure you do not have a microSD card in the microSD slot.

1. On your PC, use **My Computer** or **Windows Explorer** to locate the directory **SOMO655**, which contains the upgrade files.
2. Copy the SOMO655 directory to the root of your memory card.





**IMPORTANT: COPY THE SOMO655 DIRECTORY TO THE ROOT OF THE MEMORY CARD!
DO NOT CHANGE THE NAME OF THE FOLDER!**

Good Example: F:/SOMO655

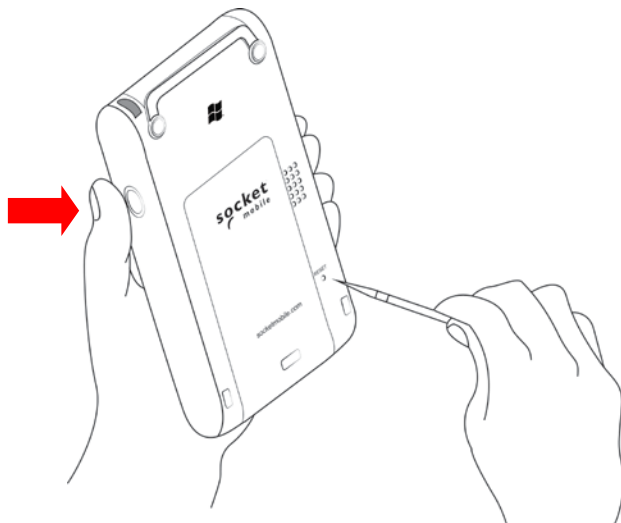
Bad Example: F:/Socket/SOMO655

Bad Example: F:/SoMo_655

3. Insert the memory card into the device.

STEP 4: Install the Files

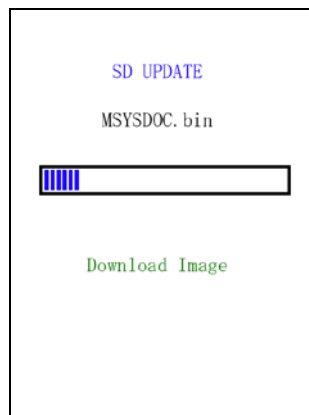
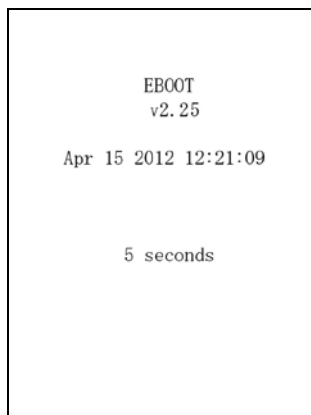
1. Press and hold the **Right Programmable Application** button on your SoMo 655.
2. While holding the button, use the stylus to gently press the **Reset** button on the back of your SoMo 655.
Keep holding the **Right Programmable Application** button.



3. An EBOOT screen will appear with a timer, counting down from 5 seconds.



**IMPORTANT: KEEP HOLDING THE RIGHT PROGRAMMABLE APPLICATION BUTTON
UNTIL THE TIMER REACHES 0 SECONDS! OTHERWISE THE INSTALLATION WILL BE
ABORTED.**

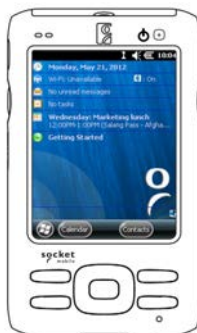


4. The SoMo 655 will begin to download and update the ROM image.
5. After the installation reports, **“Update completed!”** the Socket splash screen will appear for about 30 seconds then disappear.



Socket Splash Screen

6. The Windows Embedded Handheld splash screen will appear for about 30 seconds.
7. The Windows Welcome wizard will prompt you to set up Windows Mobile. Follow the instructions on your screen.
8. After setting up Windows Embedded Handheld, the Today screen will appear, and the SoMo 655 will be ready to use.



Today Screen

Appendix F

Troubleshooting

SYMPTOM: When I press the power button, the SoMo does not turn on.

Possible Reason	Solution
The SoMo battery does not have adequate charge.	Plug the SoMo into AC power or insert a charged battery.
The SoMo Mode switch is in hold mode.	Slide the Mode switch on the left side of the SoMo UP, to the A position. If you have a new SoMo, remove the sticker on top of the Mode switch.

Appendix G

Technical Support

If you have trouble installing or using the SoMo 655, Socket has different support options to help you.

Online Knowledge Base:

Search for articles, Frequently Asked Questions or Hot Topics any time, day or night.

http://support.socketmobile.com/EU_S1a.asp

Online Requests:

Register your product and submit a question to our Technical Support Team.

<http://support.socketmobile.com>

Telephone:

- Worldwide: +1- 510-933-3020
- EU +32 (0) 479 49 64 54

Limited Warranty

Socket Mobile Incorporated (Socket) warrants this product against defects in material and workmanship, under normal use and service, for one (1) year from the date of purchase. Product must be purchased new from a Socket Authorized Distributor or Reseller. Used products and products purchased through non-authorized channels are not eligible for this warranty support.

EXCEPTIONS: Consumables such as batteries, cables, cases, straps, styli, memory cards, and charging cradles: 90 day coverage only.

An enhanced warranty is available separately for some Socket products. For more information, please visit: <http://support.socketmobile.com>

Incompatibility is not a defect covered by the Socket warranty. During the warranty period, Socket will, at its option, repair or replace the defective product at no charge when furnished with proof of retail purchase, provided that you deliver the product to Socket or to an authorized Socket Service Center.

The returned product must be accompanied by a return material authorization (RMA) number issued by Socket or by an authorized Socket Service Center. If you ship the product, you must use the original container or equivalent and you must pay the shipping charges to Socket. Socket will pay surface shipping charges back to any location in the contiguous United States. This warranty applies only to the original retail purchaser and is not transferable.

Socket may, at its option, replace or repair the product with new or reconditioned parts and the returned product becomes Socket property. Socket warrants the repaired or replaced products to be free from defects in material or workmanship for ninety (90) days after the return shipping date, or for the remainder of the original warranty period, whichever is greater.

This warranty does not cover the repair or replacement of products damaged by abuse, accident, lost products, use beyond Socket's published specifications, liquid immersion, misuse or misapplication, damages caused by an act of God, nor as a result of service or modification other than by Socket unless specifically described by Socket in product documentation. This warranty does not provide coverage for any product updates, for example, updates due to design changes, except as deemed necessary by Socket, and does not cover any calibration or adjustments necessary for product functionality. This warranty does not cover refurbishing cosmetic damages such as scratched paint, cases or LCD screens. This warranty is void if you install batteries into the product that were not supplied or approved by Socket.

SOCKET IS NOT RESPONSIBLE FOR INCIDENTAL OR CONSEQUENTIAL DAMAGES RESULTING FROM BREACH OF ANY EXPRESS OR IMPLIED WARRANTY, INCLUDING DAMAGE TO PROPERTY AND, TO THE EXTENT PERMITTED BY LAW, DAMAGES FOR PERSONAL INJURY. THIS WARRANTY IS IN LIEU OF ALL OTHER WARRANTIES INCLUDING IMPLIED WARRANTIES OF MERCHANTABILITY AND FITNESS FOR A PARTICULAR PURPOSE.

Some states do not allow limitation of implied warranties, or the exclusion or limitation of incidental or consequential damages, so the above limitations or exclusions may not apply to you. This warranty gives you specific legal rights, and you may also have other rights that vary from state to state. This product may contain fully tested, recycled parts, warranted as if new. For more warranty information, please visit: <http://support.socketmobile.com>



PRODUCT DISPOSAL: Your device should not be placed in municipal waste. Please check local regulations for disposal of electronic products.

Disclaimer

EXCEPT TO THE EXTENT EXPRESSLY WARRANTED BY SOCKET MOBILE, INC, THIS PRODUCT IS PROVIDED "AS IS" WITHOUT WARRANTY OF ANY KIND, EXPRESS OR IMPLIED, INCLUDING WITHOUT LIMITATION, THE IMPLIED WARRANTIES OF MERCHANTABILITY OR FITNESS FOR A PARTICULAR PURPOSE. EXCEPT TO THE EXTENT REQUIRED BY LAW, SOCKET DOES NOT ASSUME ANY PRODUCT LIABILITY ARISING OUT OF, OR IN CONNECTION WITH, THE APPLICATION OR USE OF ANY PRODUCT OR APPLICATION DESCRIBED HEREIN.

Limited Software Warranty

LIMITED WARRANTY. SOCKET warrants that the original disk or CD ROM is free from defects for 90 days from the date of delivery of the SOFTWARE.

CUSTOMER REMEDIES. SOCKET'S entire liability and your exclusive remedy shall be, at SOCKET'S option, either (a) return of the price paid or (b) replacement of the SOFTWARE which does not meet SOCKET'S Limited Warranty and which is returned to SOCKET with a copy of your receipt. Any replacement SOFTWARE will be warranted for the remainder of the original warranty period or 30 days, whichever is longer. THESE REMEDIES ARE NOT AVAILABLE OUTSIDE OF THE UNITED STATES OF AMERICA.

NO OTHER WARRANTIES. SOCKET disclaims all other warranties, either express or implied, including but not limited to implied warranties of merchantability and fitness for a particular purpose, with respect to the SOFTWARE and the accompanying written materials. This limited warranty gives you specific legal rights. You may have others which vary from state to state.

NO LIABILITY FOR CONSEQUENTIAL DAMAGES. In no event shall SOCKET or its suppliers be liable for any damages whatsoever (including, without limitation, damages for loss of business profits, business interruption, loss of business information, or other pecuniary loss) arising out of the use of or inability to use the SOFTWARE, even if SOCKET has been advised of the possibility of such damages. Because some states do not allow the exclusion or limitation of liability for consequential or incidental damages, the above limitation may not apply to you.

EXPORT LAW ASSURANCES. You may not use or otherwise export or reexport the SOFTWARE except as authorized by United States law and laws of the jurisdiction in which the SOFTWARE was obtained. In particular, but without limitation, none of the SOFTWARE may be used or otherwise exported or reexported (a) into (or to a national or resident of) a United States embargoed country or (b) to anyone on the U.S. Treasury Department's list of Specially Designated Nationals or the U.S. Department of Commerce's Table of Denial Orders. By using the SOFTWARE, you represent and warrant that you are not located in, under control of, or a national or resident of any such country or on any such list.

GOVERNMENT END USERS. If the SOFTWARE is supplied to the U. S. Government, the SOFTWARE is classified as "restricted computer software" as defined in clause 52.227-19 of the FAR. The U. S. Government 's rights to the SOFTWARE are as provided in clause 52.227-19 of the FAR.

CONTROLLING LAW AND SEVERABILITY. This License shall be governed by the laws of the United States and the State of California. If for any reason a court of competent jurisdiction finds any provision, or portion thereof, to be unenforceable, the remainder of this License shall continue in full force and effect.

Regulatory Compliance

FCC: Part 15, Class B

Industry Canada

CE: EN

TELEC

NOM

RoHS and WEEE compliant

Electrical Safety EN60950, UL, CUL

EMI/RFI

Bluetooth Certification (BQB test), Bluetooth QD ID B012762

USB IF Test

Microsoft Embedded Hand Held 6.5 Logo Test Certification

EnergyStar

EU/International: EN301 489-1, -17

EN61000-4-2: 1995, ESD $\pm 8\text{kV}$ air/ $\pm 4\text{kV}$ contact

EN61000-4-3: 1997, radiated Immunity 3V/m

EN61000-4-4: 1995, EFT $\pm 0.5\text{kV}$

EN61000-4-5: 1995, Surge $\pm 0.5\text{kV}$

EN61000-4-6: 1

FCC Interference Statement (USA)

This equipment has been tested and found to comply with the limits for a Class B digital device, pursuant to Part 15 of the FCC Rules. These limits are designed to provide reasonable protection against harmful interference in a residential installation. This equipment generates, uses, and can radiate radio frequency energy and, if not installed and used in accordance with the instructions, may cause harmful interference to radio communications. However, there is no guarantee that interference will not occur in a particular installation. If this equipment does cause harmful interference to radio or television reception, which can be determined by turning the equipment off and on, the user is encouraged to try to correct the interference by one of the following measures:

- Reorient or relocate the receiving antenna.
- Increase the separation between the equipment and receiver.
- Connect the equipment into an outlet on a circuit different from that to which the receiver is connected.
- Consult the dealer or an experienced radio/TV technician for help.
- FCC Caution: Any changes or modifications not expressly approved by the party responsible for compliance could void the user's authority to operate this equipment.

This device complies with Part 15 of the FCC Rules. Operation is subject to the following two conditions: (1) This device may not cause harmful interference, and (2) this device must accept any interference received, including interference that may cause undesired operation.



IMPORTANT: RADIATION EXPOSURE STATEMENT

THIS EQUIPMENT COMPLIES WITH FCC RADIATION EXPOSURE LIMITS SET FORTH FOR AN UNCONTROLLED ENVIRONMENT. END USERS MUST FOLLOW THE SPECIFIC OPERATING INSTRUCTIONS FOR SATISFYING RF EXPOSURE COMPLIANCE. TO MAINTAIN COMPLIANCE WITH FCC RF EXPOSURE COMPLIANCE REQUIREMENTS, PLEASE FOLLOW OPERATION INSTRUCTIONS AS DOCUMENTED IN THIS MANUAL.

This PDA has been tested and demonstrated compliance when Bluetooth and WLAN are transmitting simultaneously. This PDA must not be co-located or operating in conjunction with any other antenna or transmitter.

For body worn operation, this device has been tested and meets the FCC RF exposure guidelines when used with the Socket accessories supplied or designated for this product. Use of other accessories may not ensure compliance with FCC RF exposure guidelines."

Industry Canada Statement:

This device complies with RSS-210 of the Industry Canada Rules. Operation is subject to the following two conditions: (1) This device may not cause harmful interference, and (2) this device must accept any interference received, including interference that may cause undesired operation.



IMPORTANT: RADIATION EXPOSURE STATEMENT

THIS EQUIPMENT COMPLIES WITH IC RADIATION EXPOSURE LIMITS SET FORTH FOR AN UNCONTROLLED ENVIRONMENT. END USERS MUST FOLLOW THE SPECIFIC OPERATING INSTRUCTIONS FOR SATISFYING RF EXPOSURE COMPLIANCE. TO MAINTAIN COMPLIANCE WITH IC RF EXPOSURE COMPLIANCE REQUIREMENTS, PLEASE FOLLOW OPERATION INSTRUCTIONS AS DOCUMENTED IN THIS MANUAL.

European Union Notice:

Radio products with the CE marking comply with the R&TTE Directive (1999/5/EC), the EMC Directive (2004/108/EC) and the Low Voltage Directive (2006/95/EC) issued by the Commission of the European Community.

Compliance with these directives implies conformity to the following European Norms:

- EN 60950 Product Safety
- EN 300 328 Technical requirement for radio equipment
- EN 301 489-1/-17 General EMC requirements for radio equipment