



MOBILERAID MR2UT+(B)

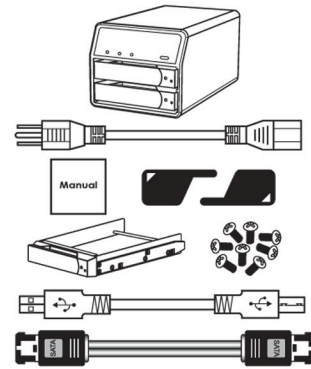
MOBILERAID MR2CT+



QUICK INSTALLATION GUIDE v1.0

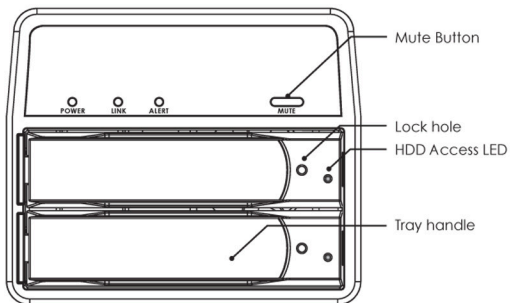
Package Contents

MR2CT+ / MR2UT+(B)	1
Power Cord	1
Manual	1
HD Tray Keys	2
Removable Tray Modules (Screws Included)	2
USB 3.0 Cable	1
eSATA Cable	1
Firewire 800 Cable (MR2CT+ only)	2
(Please contact Sans Digital in case of missing or damaged items.)	

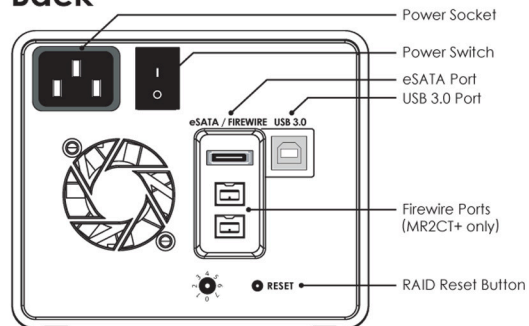


Hardware Diagram

Front



Back



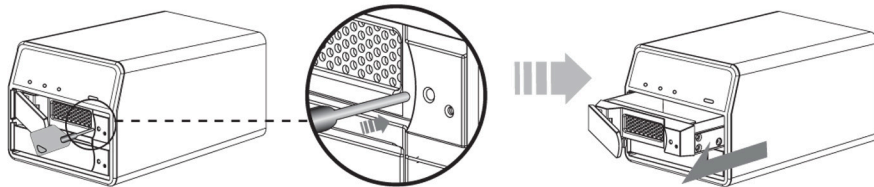
LED Indicators

Power: Green (Power on) / **Link:** Yellow (Connects to computer) / **Error:** Red (Error on RAID)

Installing a Hard Drive in the Removable Tray Module

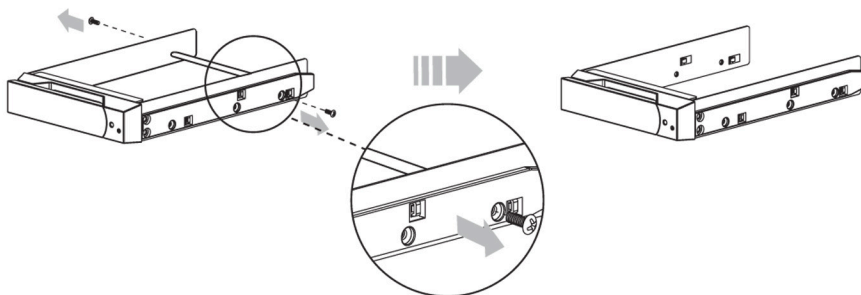
Step 1

Press the key into the lock hole (located on front of the unit). Pull handle & remove tray.



Step 2

Dismount the metal tray protector by removing the screws in the illustration below.



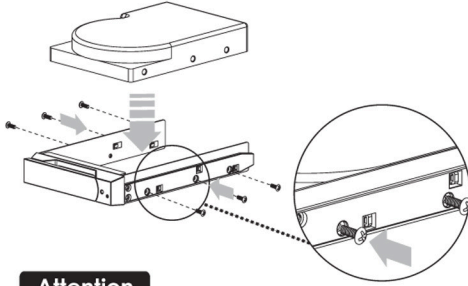
NOTE Please read carefully before installing hard drives:

1. Using hard drives with the same brand name model and capacity is highly recommended to achieve optimal performance. If the hard drives are different in capacity, the total capacity will equal to twice of the smaller drive's capacity.
2. New hard drives are highly recommended. As used hard drive may have a higher defective rate. Defective hard drive may cause RAID failure and loss of data.

Installing a Hard Drive (Continued)

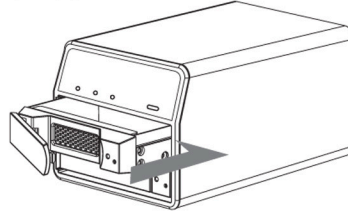
Step 3

Fasten the hard drive with screws in the corresponding locations.



Step 4

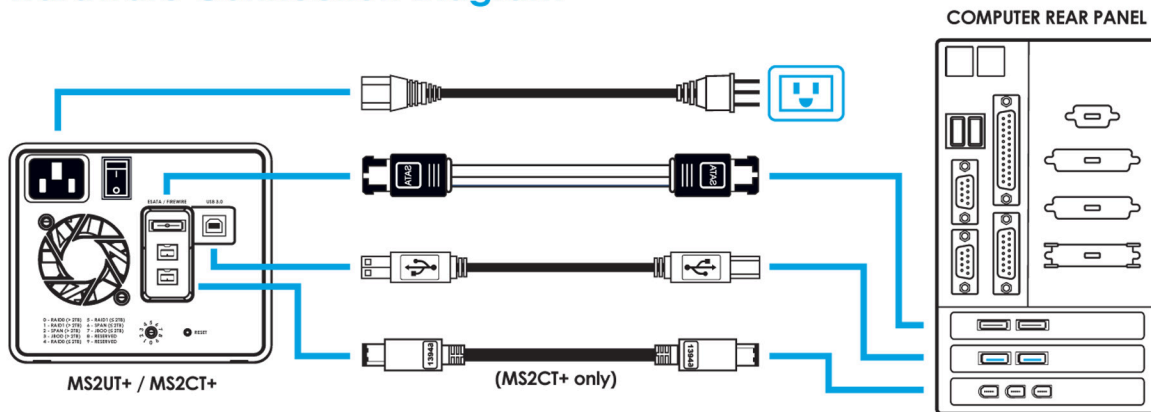
Place the tray with the mounted hard drive back into the case. (If the screws are not properly fastened, the hard disk may be pushed towards the back of the unit and the tray handle will not open properly.)



Attention

- A new hard drive must first initialize, partition and format in the operating system before use.

Hardware Connection Diagram



RAID Setup



1. Turn the unit off.
2. Hold the "RESET" button and turn it on at the same time.
3. Continue to hold the "RESET" button for 5 secs.
4. Release the "RESET" button and RAID mode is created.

0 - RAID0 (> 2TB)
 1 - RAID1 (> 2TB)
 2 - SPAN (> 2TB)
 3 - JBOD (> 2TB)
 4 - RAID0 (≤ 2TB)
 5 - RAID1 (≤ 2TB)
 6 - SPAN (≤ 2TB)
 7 - JBOD* (≤ 2TB)
 8 - RESERVED
 9 - RESERVED

* JBOD mode supported via eSATA & Firewire 800 only. Port multiplier required.

NOTE: Changing the RAID mode will erase the data on HDDs. Please backup all data before resetting the unit.

Hard Drive Tray LED RAID Indications

The HDD tray LED lights in a variation of blue, red, or purple depending on the RAID mode chosen.

NO LED - HDD not detected / failure
BLUE - Power on and detected
FLASHING PURPLE - Accessing data
SOLID PURPLE - Rebuilding source
ALTERNATING PURPLE / RED - Rebuilding target disk