

# NETGEAR®

## Installation Guide

Connect with Innovation™

### ProSafe™ 16-port Gigabit Switch GS116v2

Estimated Installation Time: 5–10 minutes

## Package Contents

When you open the box, verify that you received everything. The package includes:

- ProSafe 16-port Gigabit Switch GS116v2
- AC power adapter
- Wall-mounting kit (2 screws, 2 anchors)
- *Installation Guide* (this document)

If you do not have everything listed here, see the support information card for contact information. If you do not have a support information card, get contact information in the technical support section at [www.NETGEAR.com](http://www.NETGEAR.com).

## Prepare to Install the Switch

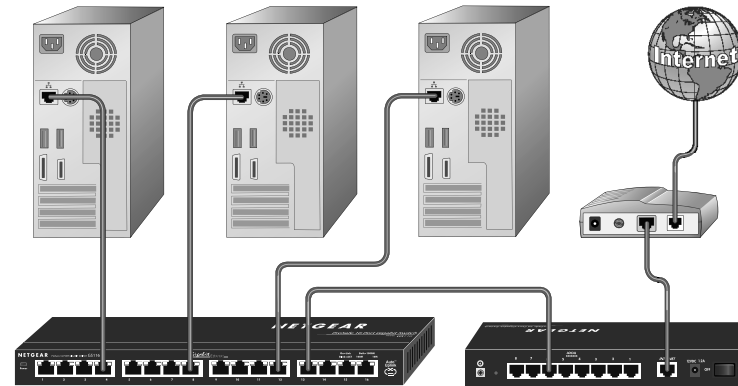
Decide where you want to place the switch. Find a flat horizontal surface such as a table, desk, or shelf. The switch comes with wall-mounting screws. You can use the screws if you want to hang the switch in an open space on a wall. Make sure the selected location is:

- Not in direct sunlight or near a heater or heating vent.
- Not cluttered or crowded. There should be at least 2 inches (5 cm) of clear space on all sides of the switch.
- Well ventilated (especially if it is in a closet).

You need one Category 5e (Cat 5e) Ethernet cable with RJ-45 connectors for each device you want to connect to the switch. Each Ethernet cable needs to be less than 328 feet (100 meters).

## Installation

1. Either place the switch on a flat surface, or wall-mount the switch.
2. To connect the switch, for each device, insert one end of an Ethernet cable into the port in the device and insert the other end into one of the Ethernet ports on the switch.



3. Connect the power adapter cord into the back of the switch, and then plug the adapter into an electrical outlet or power strip. The Power LED should light up.



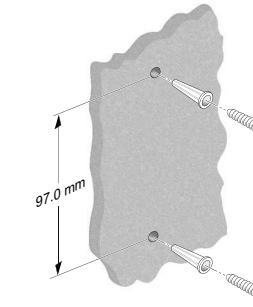
4. Check the LEDs to confirm that all connections are correct.

The following table describes LED behavior.

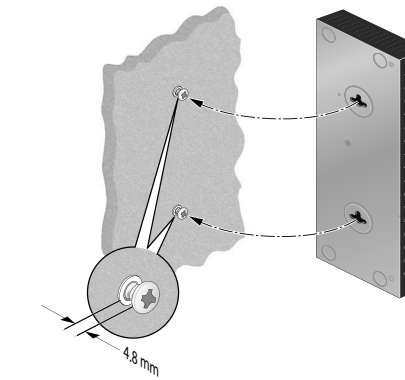
LED	Activity
Power	<ul style="list-style-type: none"> <li>• <b>On:</b> The switch has power.</li> <li>• <b>Off:</b> No power.</li> </ul>
RJ-45 ports	<ul style="list-style-type: none"> <li>• <b>Right LED on:</b> 10 Mbps connection to a powered device.</li> <li>• <b>Left LED on:</b> 100 Mbps connection to a powered device.</li> <li>• <b>Both LEDs on:</b> 1000 Mbps connection to a powered device.</li> <li>• <b>Blinking:</b> Activity on this port.</li> </ul>

## Wall-Mount the Switch

1. If you are wall-mounting the switch, drill pilot holes for the anchors.



2. Insert the anchors, and then the screws. Tighten the screws, leaving about 4.8 mm of the screw exposed as shown.



3. Slip the case over the screws.

## Troubleshooting with the LEDs

The LEDs can help you troubleshoot the hardware.

### Power LED Is Off

The switch has no power. Make sure that:

- The power cord is correctly connected to the switch.
- The power adapter is correctly connected to a functioning power outlet. If you are using a power strip, make sure the power strip is turned on. If the socket is controlled by a light switch, make sure the switch is in the on position.
- You are using the NETGEAR power adapter supplied with your switch.

### Port LED Is Off or Stays On

There is a hardware connection problem.

- Make sure the cable connectors are securely plugged in at the switch and the device.
- Make sure the connected device is turned on.
- If the Ethernet cable is connected to an NIC or other Ethernet adapter, make sure the card or adapter is installed correctly and is working.
- Make sure the cable is less than 328 feet (100 meters).

Technical specifications	
Standards compatibility	IEEE 802.3i 10BASE-T Ethernet, IEEE 802.3u 100BASE-TX Fast Ethernet, IEEE 802.3ab 1000BASE-T Gigabit Ethernet, IEEE 802.3x Flow Control, IEEE 802.1p and TOS priority, WRR queuing with four queues
Network interface	RJ-45 connector for 10BASE-T, 100BASE-TX, or 1000BASE-T Ethernet interface
Power adapter	12W max. and 12V@ 1A DC input
Power consumption	9.5W max.
Weight	895g (1.973 lb.)
Dimensions (W x D x H)	286 mm x 101 mm x 27 mm 11.26 in. x 3.98 in. x 1.06 in.
Operating temperature	0 to 50° C (32 to 122° F)
Operating humidity	10% to 90% relative humidity, non-condensing
Electromagnetic compliance	CE Class A, included EN55022 (CISPR 22) and EN55024, FCC part 15 Class A, VCCI Class A, C-Tick Class A
Power adapter safety agency approvals	CE mark, Commercial UL listed (UL 60950-1), C-Tick, CB, & CCC

Performance specifications	
Frame filter rate	14,880 frames/sec. max. for 10 M port; 148,800 frames/sec. max. for 100 M port; 1,488,000 frames/sec. max. for 1000 M port
Frame forward rate	14,880 frames/sec. max. for 10 M port; 148,800 frames/sec. max. for 100 M port; 1,488,000 frames/sec. max. for 1000 M port
Network latency (using 64-byte packets)	100 Mbps to 100 Mbps: 5.2 μs max. 1000 Mbps to 1000 Mbps: 2.6 μs max.
Address database size	Up to 8K MAC addresses
MAC address learning	Automatically updated
Queue buffer	2 Mb
Jumbo frame support	Up to 9 KB
NETGEAR Green features	Auto power-down mode saves energy when ports are unused Power-saving per port if the cable length is less than 32.8 feet (10 meters).

## Technical Support

Thank you for selecting NETGEAR products.

After installing your device, locate the serial number on the label of your product, and use it to register your product at [www.NETGEAR.com/register](http://www.NETGEAR.com/register). Registration is required to use our telephone support service. Also go to <http://support.netgear.com> for product updates, additional documentation, and support.

For complete DoC go to the NETGEAR EU Declarations of Conformity website at [http://support.netgear.com/app/answers/detail/a\\_id/11621/](http://support.netgear.com/app/answers/detail/a_id/11621/).



This symbol was placed in accordance with the European Union Directive 2002/96 on the Waste Electrical and Electronic Equipment (the WEEE Directive). If disposed of within the European Union, this product should be treated and recycled in accordance with the laws of your jurisdiction implementing the WEEE Directive.



201-14360-03



February 2012

NETGEAR, the NETGEAR logo, and Connect with Innovation are trademarks and/or registered trademarks of NETGEAR, Inc. and/or its subsidiaries in the United States and/or other countries. Information is subject to change without notice. Other brand and product names are registered trademarks or trademarks of their respective holders. © 2012 NETGEAR, Inc. All rights reserved.