



#### Package Contents

- 10/100/1000 Gigabit Network Adapter
- Driver CD
- User Guide on CD
- Registration Card

## 10/100/1000 Gigabit Network Adapter

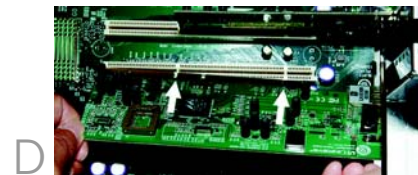


Quick Installation



# 1 Installing the Gigabit Network Adapter in Your PC

- A** Power off your PC and any peripheral equipment attached to it. Unplug your PC's power cord.
- B** Open your PC's case, and locate an available PCI slot on the motherboard.
- C** Remove the metal PCI slot cover on the back of the PC.
- D** Insert the Adapter into the PCI slot. Make sure that all of its pins are touching the slot's contacts. You may have to apply a bit of pressure to slide the Adapter all the way in.
- E** After the Adapter is set firmly in place, secure its fastening tab to your PC's chassis with a mounting screw. Then close your PC's case.
- F** Connect one end of the Ethernet network cable to your network's Gigabit hub or switch.
- G** Reconnect your PC's power cord, and then power on your computer.
- H** Proceed to step 2.



**NOTE:** For best results, Linksys recommends using Category 5e or better Ethernet network cabling. This is the only cabling that will work for Gigabit transfer speeds. (You can use Category 5 Ethernet network cabling for 100Mbps or lower speeds.)

# 2 Installing the Driver for the Gigabit Network Adapter

Now that the hardware installation is complete, you will install the driver for the Adapter. Proceed to the section for your PC's Windows operating system.

## Windows XP

- A** Power on your computer.
- B** Windows XP will automatically detect the Adapter installed in your computer. Insert the Driver CD into your computer's CD-ROM drive.
- C** On the first screen of the Found New Hardware Wizard, select **Install from a list or specific location (Advanced)**, and click **Next**.
- D** Select **Search for the best driver in these locations**. Then select **Include this location in the search:**, and enter **D:\WinXP** in the field provided (if "D" is the letter of your CD-ROM drive). Click **Next**.
- E** When Windows XP has finished installing the driver, click **Finish**.

**Congratulations! The installation of the 10/100/1000 Gigabit Network Adapter is complete.**



## Windows 2000

- A** Power on your computer.
- B** Windows 2000 will automatically detect the Adapter installed in your computer. Insert the Driver CD into your computer's CD-ROM drive.
- C** On the first screen of the Found New Hardware Wizard, click **Next**.
- D** Select **Search for a suitable driver for my device (recommended)**. Then click **Next**.
- E** Select **Specify a Location**, and click **Next**.
- F** In the field provided, enter **D:\WIN2000** (if "D" is the letter of your CD-ROM drive). Then click **OK**.
- G** On the *Driver Files Search Results* screen, click **Next**.
- H** When Windows 2000 has finished installing the driver, click **Finish**.

**Congratulations! The installation of the 10/100/1000 Gigabit Network Adapter is complete.**



## Windows Millennium or 98SE

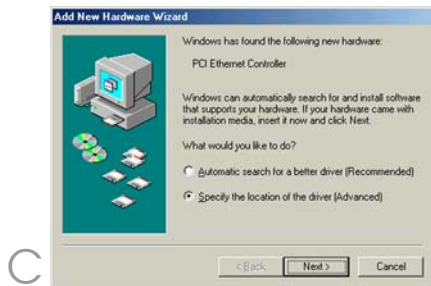
- A** Power on your computer.
- B** Windows Millennium or 98SE will automatically detect the Adapter installed in your computer. Insert the Driver CD into your computer's CD-ROM drive.
- C** On the first screen of the Found New Hardware Wizard, select **Specify the location of the driver (Advanced)**. Then click **Next**.
- D** Select **Search for the best driver for my device. (Recommended)**. Then select **Specify a location**.

If your computer is running Windows Millennium, enter **D:\WinME** in the field provided (if "D" is the letter of your CD-ROM drive).

If your computer is running Windows 98SE, enter **D:\Win98** in the field provided (if "D" is the letter of your CD-ROM drive).

Then click **Next**.

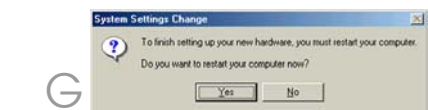
- E** After Windows has found the driver, click **Next**.



- F** When Windows Millennium or 98SE has finished installing the driver, click **Finish**.

- G** The *System Settings Change* screen will appear and ask you if you want to restart your computer. To complete the driver installation and restart your computer, click **Yes**.

**Congratulations! The installation of the 10/100/1000 Gigabit Network Adapter is complete.**



**LINKSYS®**  
A Division of Cisco Systems, Inc.

For additional information or troubleshooting help, refer to the User Guide on the Setup CD-ROM. You can also call or e-mail for further support.

**24-hour Technical Support**  
800-326-7114  
(toll-free from US or Canada)

**E-mail Support**  
support@linksys.com

**Website**  
<http://www.linksys.com> or  
<http://support.linksys.com>

**RMA (Return Merchandise Authorization)**  
<http://www.linksys.com/support>

**FTP Site**  
<ftp://ftp.linksys.com>

**Sales Information**  
800-546-5797 (800-LINKSYS)

Linksys is a registered trademark or trademark of Cisco Systems, Inc. and/or its affiliates in the U.S. and certain other countries. Copyright © 2003 Cisco Systems, Inc. All rights reserved.