



KONICA MINOLTA

More power, More zoom, More fun

DiMAGE Z6



GT 35-420mm 1:2.8-4.5
(Equiv. 135) APO

6.0
Megapixels

48x
Total Zoom

6.0 Megapixels



12x Optical Zoom 4x Digital Zoom

240 Frames with four AA Alkaline batteries

2.0 -inch LCD

0.2s Rapid Auto Focus



Anti-Shake



Fully-Equipped to Seize the Magic Moment

Power, Speed, and Shake—Free Precision for Beautiful Photos You'll Want to Share

■ 6.0-megapixel resolution for big, beautiful photo prints

The high-resolution, 6.0-megapixel CCD (effective) captures such fine image detail that even 179 mm x 238 mm / 7 in. x 9.4 in. (300 dpi) photo prints look great. What's more, CCD performance is further enhanced by the lens' GT APO (apochromatic) optics and AD (Anomalous Dispersion) elements for edge-to-edge sharpness and superior color.

■ CxProcess™ III technology for rich, natural color

Proprietary Konica Minolta CxProcess III image processing technology optimizes color and contrast to ensure that colors are rendered just as the human eye perceives them.

6.0

Megapixels

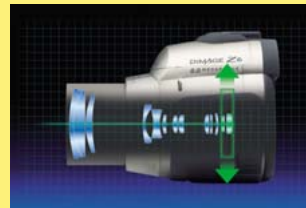
AS
ANTI-SHAKE



Konica Minolta
Anti-Shake Technology
European
Photo Innovation
of the Year 2004-2005

■ Anti-Shake at any zoom setting

The DiMAGE Z6's Anti-Shake system virtually eliminates blurring caused by camera shake with an exclusive Konica Minolta mechanism that acts directly on the CCD. This powerful feature gives you the ability to take hand-held shots at shutter speeds four to eight times longer (2-3 stops) than typically required, without compromise to optical image quality.



1x



3x



12x



4x Digital Zoom

48x

■ 48x total zoom for dramatic close-ups of distant subjects

Get close to the action – even from a distance – with the DiMAGE Z6's 12x optical zoom. Boasting a focal length equivalent to 35 mm – 420 mm on a 35mm film camera, it allows you to fill the frame with beautifully detailed images of faraway subjects. You can also combine it with 4x digital zoom to achieve a maximum of up to 48x zoom.



Macro



Super Macro (1 cm / 0.4 inches)

48x

Mega Zoom

0.4in.

■ Super Macro

Super Macro mode lets you create stunning close-ups by shooting from a distance of only 1 cm / 0.4 inches.



■ Fast, precise autofocus, plus advanced Predictive Focus Control

The DiMAGE Z6's high-precision Rapid AF (autofocus) offers outstanding focusing accuracy and speed for quick, responsive shooting. In addition, advanced Predictive Focus Control improves focusing accuracy when shooting fast-moving subjects.

■ Fast, stress-free operation

A startup time of 2 seconds, a shutter-release lag time of 0.09 seconds, and a frame-to-frame shooting interval of 1.1 second ensure fast, responsive operation for stress-free shooting*.

*All times approximate; shooting interval does not include autofocus time.

■ 20-frame continuous shooting*

At a speed of 1.8 frames per second, Continuous Advance mode captures a sequence of 20 frames at an image size of 2816 x 2112 – a feature handy for documenting a whole range of motion such as a tennis volley.

* Image quality: Standard

■ The perfect moment is yours with Progressive Capture mode

Progressive Capture mode lets you continually shoot images for as long as you hold down the shutter button. When the button is released, the last 10 frames are recorded to the camera's memory card, making it easy for you to capture the exact moment—a mid-air catch, for example—and select the best shot from the series.



Rapid AF

*Approx., at wide-angle position.

20

Frames



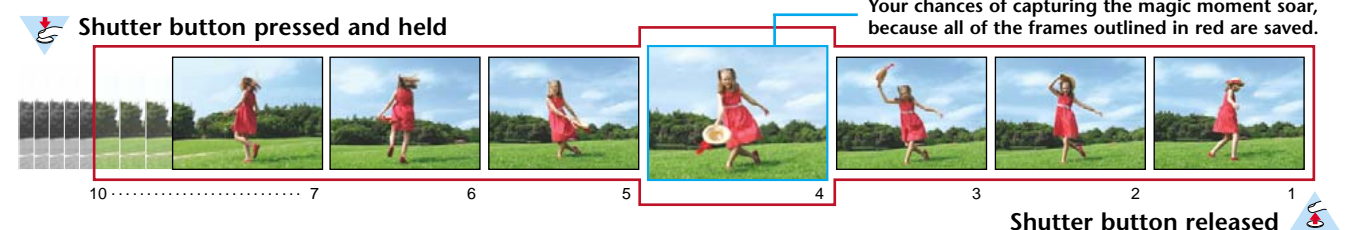
240

Frames with four AA Alkaline batteries



You can shoot up to 240 frames*1 with four AA Alkaline batteries (or 420 frames*2 when using Ni-MH batteries) thanks to energy-efficient design that keeps power consumption low.

*1 According to CIPA standards, using an SD Memory Card. *2 With 2500mAh Ni-MH batteries.



Wait!
There's
more...

■ Versatile flash shooting

In addition to being equipped with a built-in popup flash, the DiIMAGE Z6 lets you take advantage of the enhanced power and versatility of optional Maxxum Flash 5600HS(D) / 3600HS(D) / 2500(D) external flash units.



■ Wide-angle converter lens

The optional 26mm^{*1} wide-angle converter lens^{*2} offers a virtual step back from your subject, allowing you to fit more of the scene into the frame for great results whether shooting vast landscapes or when working in confined spaces such as tight indoor scenes.

^{*1} 35mm film camera equivalent. ^{*2} Available as ZCW-300 KIT with adapter ring. To mount a 52mm filter to the DiIMAGE Z6, Adapter Ring ZCA-300, available separately from the ZCW-300 KIT, is required.



More Exciting Features

- Versatile movie recording includes Night Movie function with audio
- Automatic noise reduction for clearer, less-grainy images in low light
- Automatic monitor brightness adjustment for easier viewing
- Choice of color modes for greater creative flexibility

- Automatic Digital Subject Program Selection optimizes various settings to match the scene
- Real-time histogram for easy confirmation of exposure levels in each area of the frame
- Choice of multi-segment, center-weighted and spot metering for greater exposure control
- PictBridge compatibility for direct printing without a computer

Other Features at a Glance ● Comes with Digital Camera Software CD-ROM* ● Versatile P/A/S/M exposure mode control ● Manual focusing capability ● Auto white balance control, plus 5 presets and 1 custom setting ● Electronic viewfinder for easier framing and shooting ● Customizable flash mode button ● In-camera image rotation ● Exposure bracketing ● E-Mail Copy mode for creating e-mail attachments ● 6-frame index display and enlarged image display in PictBridge print settings menu ● Sharpness and contrast adjustable in 3 steps ● Choice of 11 languages for menu display

* Two software applications are included; Kodak EasyShare and DiIMAGE Master Lite. (Kodak EasyShare software: The all-in-one digital photography software solution gives you an effortless way to organize, print, and share your pictures.)

Specifications

Number of effective pixels	Approx. 6.0 million
CCD	1/2.5-type interline primary-color CCD with a total of approx. 6.4 million pixels
Anti-Shake	CCD-shift mechanism
Camera sensitivity	Auto and ISO 50 / 100 / 200 / 320 equivalents
Lens	5.83 – 69.9 mm (35 mm equivalent: 35 – 420 mm), f/2.8 – f/4.5, 13 elements in 10 groups
Recording media	SD (Secure Digital) Memory Card / MultiMediaCard
File format	JPEG, Motion JPEG (MOV) with Audio, DCF2.0 compliant, DPOF (ver. 1.1), Exif 2.2
No. of recorded pixels	2816 x 2112, 2272 x 1704, 1600 x 1200, 640 x 480
Image file size	Economy: 870 KB, Standard: 1600 KB, Fine: 3050 KB,
(approx. at 2816 x 2112)	Movie (15 fps, 320 x 240): 230 KB/s
Storage capacity*	Economy: 15, Standard: 8, Fine: 4,
(approx. no. of frames at 2816 x 2112 with 16 MB SD Card)	Movie recording (15 fps, 320 x 240): approx. 57 s
Autofocus system	* The actual number of images may vary depending upon the subject and media used.
Autofocus area	Video AF system
Focus modes	5-point wide focus area: Wide focus area / Spot focus area with Focus Area Selection
Focusing range	Autofocus: Single-shot AF, Continuous AF (with predictive focus control),
(from front of the lens)	Full-time AF, Manual focus. Focus lock available in Single-shot AF
White-balance control	Wide / Tele: 0.6 m (2.0 ft.) / 1.6 m (5.2 ft.) to infinity
Metering	Macro: Wide: 0.1 m (0.3 ft.) – 1.0 m (3.3 ft.) / Tele: 1.2 m (3.9 ft.) – 2.5 m (8.2 ft.)
Shutter speed	Super Macro: 1 cm (0.4 in.) – 100 cm (39.4 in.)
Exposure mode	Automatic, Preset (Daylight, Tungsten, Fluorescent, Cloudy, Flash), Custom
Digital Subject Program Selection	Multi-segment (256 segments), Center-weighted, Spot
Exposure compensation	4 s – 1 / 1000 s
Exposure bracketing	Programmed AE, Aperture priority, Shutter priority, Manual. AE lock available
Flash mode	Portrait, Sports action, Landscape, Sunset, Night portrait (manual selection)
Flash GN	±2 EV with 1/3 EV step
External flash units connectable	0.5 EV / 0.3 EV increments; No. of bracket: 3 frames
Finder	Autoflash & Autoflash with red-eye reduction, Fill-flash, Slow shutter sync (in Auto / P / DSPS mode),
Dioptr	Fill-flash, Fill-flash with red-eye reduction, Slow shutter sync (in A/S/M mode).
LCD monitor	Flash cancel possible by pushing the built-in flash unit downward.
Self-timer	(ISO 100 equivalent) 8 (m) / 26.2 (ft.)
Color mode	Electronic viewfinder
Movie recording	-3 – +1m ⁻¹
Sharpness / Contrast control	2.0-inch digital-interface TFT color, with total 114,000 (approx.) pixels
Noise reduction	Approx. 10 s / 2 s delay
Printing output control	Vivid, Natural, Monochrome, Sepia
Input / Output	Standard / Night Movie selectable. No. of recorded pixels: 320 x 240.
Battery	Frame rate: 30 fps / 15 fps. Long recording until the memory card is full.
External power source	Adjustable in 3 levels
Dimensions (WxHxD)	Automatic
Weight	Exif Print, PRINT Image Matching III, PictBridge
	USB: Full-Speed 12Mbps data transfer with a USB2.0 compatible computer,
	Video output NTSC / PAL (selected on the camera)
	Four AA batteries (alkaline / Ni-MH rechargeable)
	6V DC (with specified AC adapter)
	Approx. 108.5 mm x 80 mm x 84 mm / 4.3 in. x 3.1 in. x 3.4 in.
	Approx. 340 g / 12 oz. (without batteries and recording media)

Standard Accessories

Battery (four AA Alkaline batteries), Neck Strap NS-DG7000, AV Cable AVC-700, USB Cable USB-3, Digital Camera Software CD-ROM, SD Memory Card (16MB), Lens Cap LF-243, Shoe Cap SC-1000

Optional Accessories

Camera Case CS-DG1000, Wide-angle Converter ZCW-300 KIT, Adapter Ring ZCA-300, Leather Neck Strap NS-DG1000, AC Adapter AC-11, Flashes; Maxxum Flash 5600HS(D) / 3600HS(D) / 2500(D)

• Availability of accessories depends on area.

Specifications and accessories are based on the information available at the time of printing, and are subject to change without notice. For the latest information, please visit: <http://konicaminolta.com/dimage>

Compatible Computers

- IBM PC / AT compatible computers with preinstalled Windows Me, Windows 2000 Professional, Windows XP (Home / Professional), Windows 98*, or Windows 98 Second Edition* and with a built-in USB port as standard interface.

* Users with Windows 98 and Windows 98 Second Edition operating systems must install dedicated driver software included in the Digital Camera Software CD-ROM.

- Apple computers with Mac OS 9.0 – 9.2.2, Mac OS X v.10.1.3 – 10.1.5, v.10.2.1 – 10.2.8, v.10.3 – 10.3.9, v.10.4 – 10.4.1, and with a built-in USB port as standard interface.

Notes:

- Computers and operating systems must be guaranteed by their manufacturers to support USB interface. For details, please contact the manufacturer.
- Problems may be encountered depending on what other USB devices are being used in parallel with this product.
- Only a built-in USB port is supported. Problems may be encountered when the camera is connected to a USB hub.
- Normal operation may not occur even if all the system requirements are met.
- The LCD monitor is manufactured using high-precision technology. The appearance of any missing pixels or lit pixels does not indicate damage to the monitor.
- Images (except for product photos) are simulated for design purposes.

**Great Shots,
Great Prints**

Konica Minolta Inkjet Paper

Bringing you the perfect photo quality prints for all digital images captured with Konica Minolta digital cameras.

* Package design may not look the same for all regions.



- The Konica Minolta logo and "The essentials of imaging" are trademarks or registered trademarks of Konica Minolta Holdings, Inc.
- DiIMAGE, MAXXUM and CxProcess are trademarks or registered trademarks of Konica Minolta Photo Imaging, Inc.
- Apple, Macintosh and Mac OS are trademarks of Apple Computer, Inc., registered in the U.S. and other countries.
- Windows is a registered trademark of Microsoft Corporation in the United States and other countries.
- EasyShare is a trademark or a registered trademark of Eastman Kodak Company.
- All other brand and product names are trademarks or registered trademarks of their respective owners.

Konica Minolta Photo Imaging, Inc. Shinjuku Nomura Bldg., 1-26-2 Nishishinjuku, Shinjuku-ku, Tokyo, 163-0512 Japan

This brochure is printed with soy ink to help preserve the environment.