



EZ-CONNECT

SuperSpeed USB 3.0



USB 3.0 to SATA
Adapter

User Manual

www.kingwin.com

USI-2535U3

Package Content:

- USI-2535U3 adapter.
- USB 3.0 cable.
- AC power adapter.
- Driver.
- User Manual

Features:

- USB 3.0 to SATA adapter
- Connect to 2.5" and 3.5" SATA Hard Drive to USB3.0
- Support SATA types of drives.
- SATA II & USB 3.0 compatible.

Installation:

- 2.5" or 3.5" SATA Hard Drive
 - Plug USB3.0 cable into USI-2535U3



- Connect USI-2535U3 into 2.5" or 3.5" SATA Hard Drive



- Plug Power into USI-2535U3



- Plug the Power Adaptor into Power source



- Plug the USB3.0 connector into the computer.



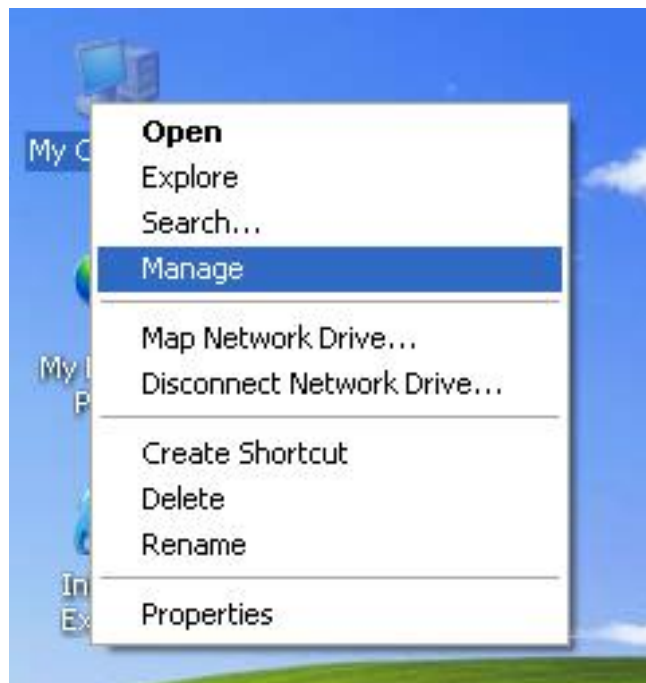
- **System Requirement**

- Windows 7/Vista/2000/XP/2003 Server/Mac 10X
- PC/Mac with one available USB3.0 port.

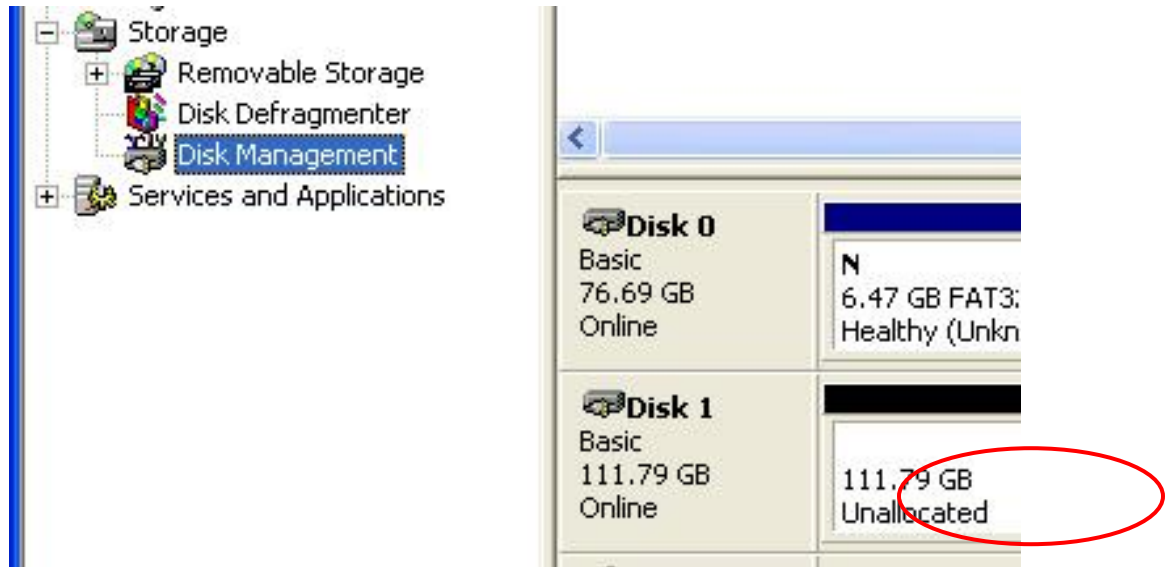
HDD Formatting Guide

- You may format your external HDD through USB3.0 connection.
- Please make sure your external HDD is turned on and well connected to the PC before formatting the HDD.

1. Right-click “My Computer” icon and select the ”Manage” column.



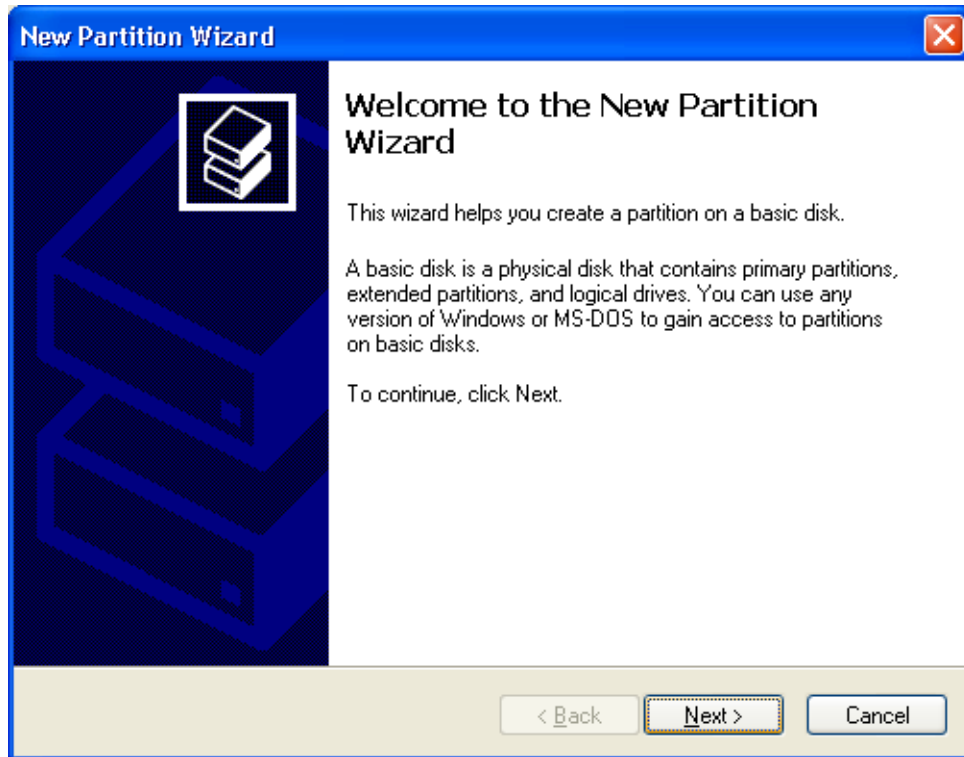
2. Select “Disk Management” and you will see your External HDD showed “Unallocated”.



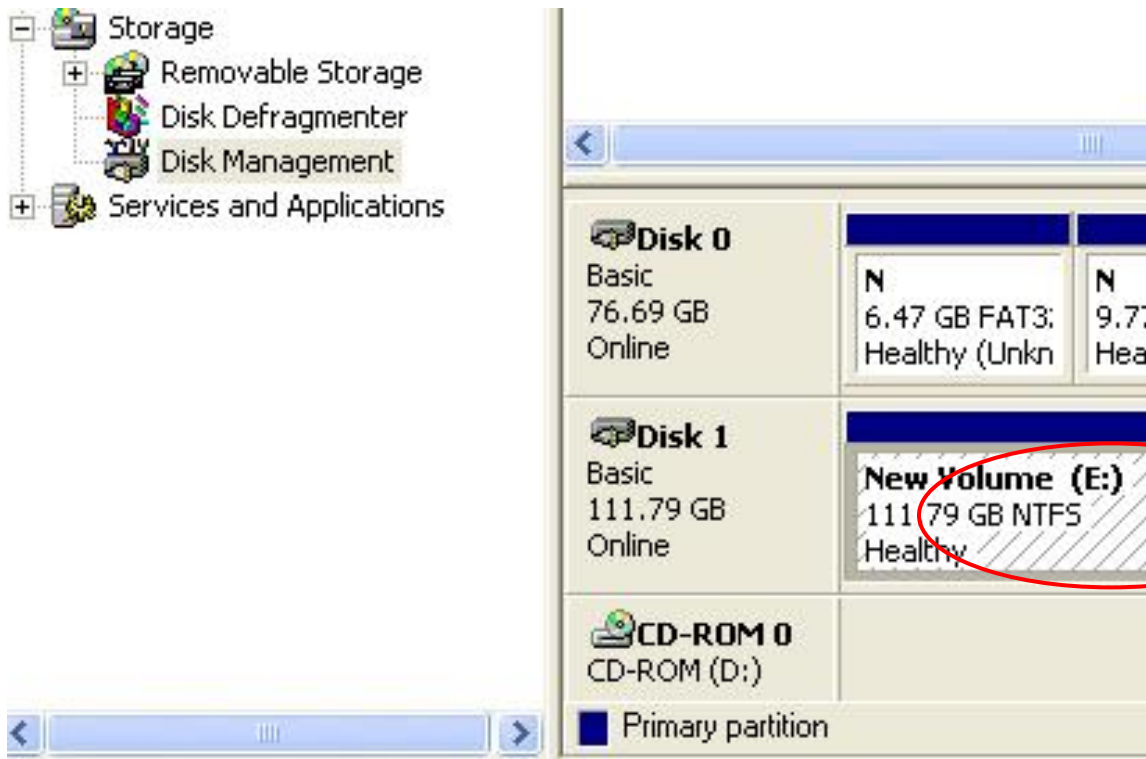
3. Right-click on the “Unallocated” block and selects “New Partition”.



4. The “New Partition Wizard” will appear. Please follow the instruction of the wizard to complete.



5. When new partition is completed, the external HDD will be recognized as a “New Volume”.



6. Double-click “My Computer”. You will see the new volume appears on your PC.

