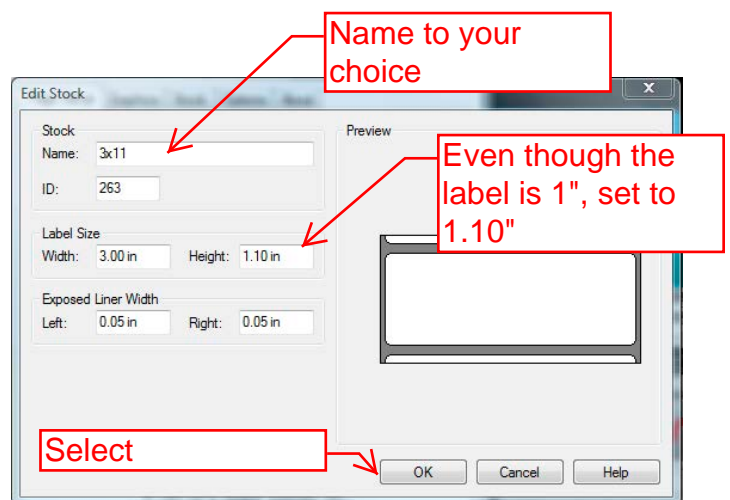
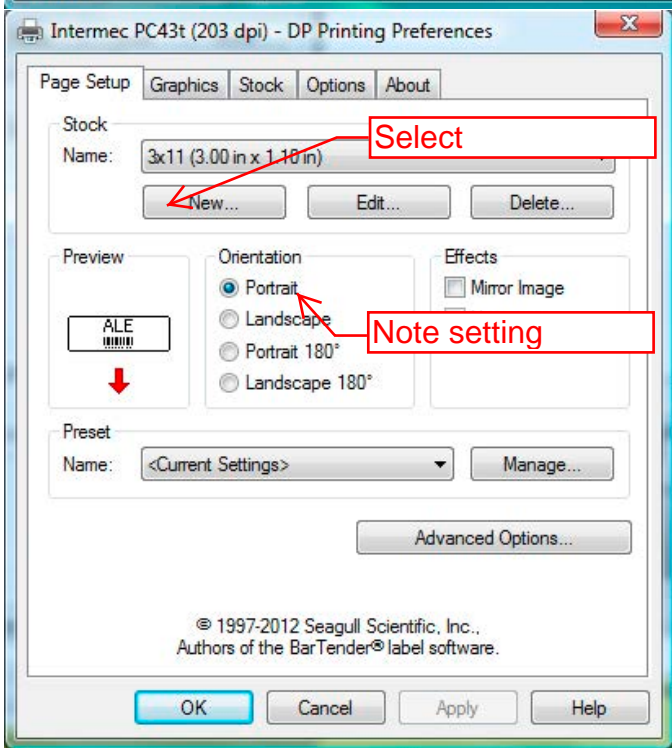
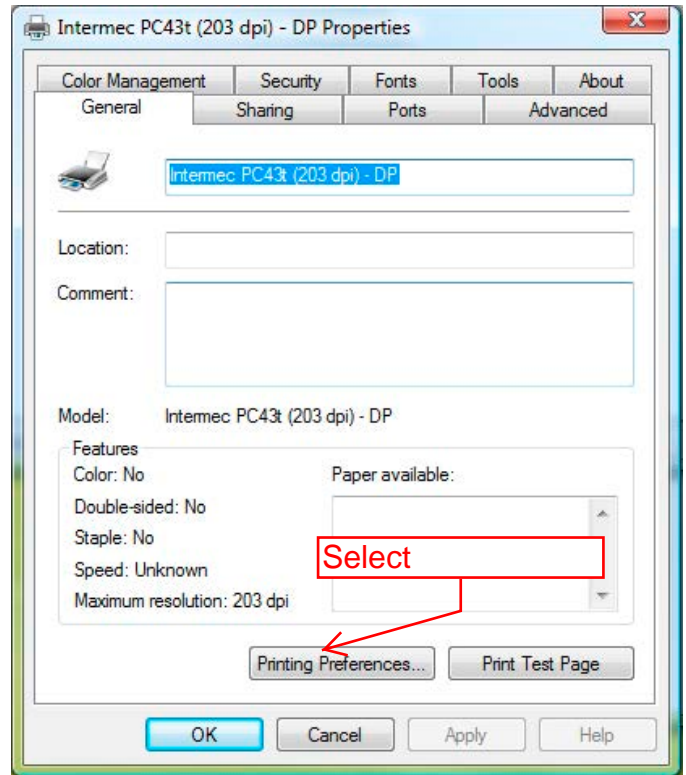
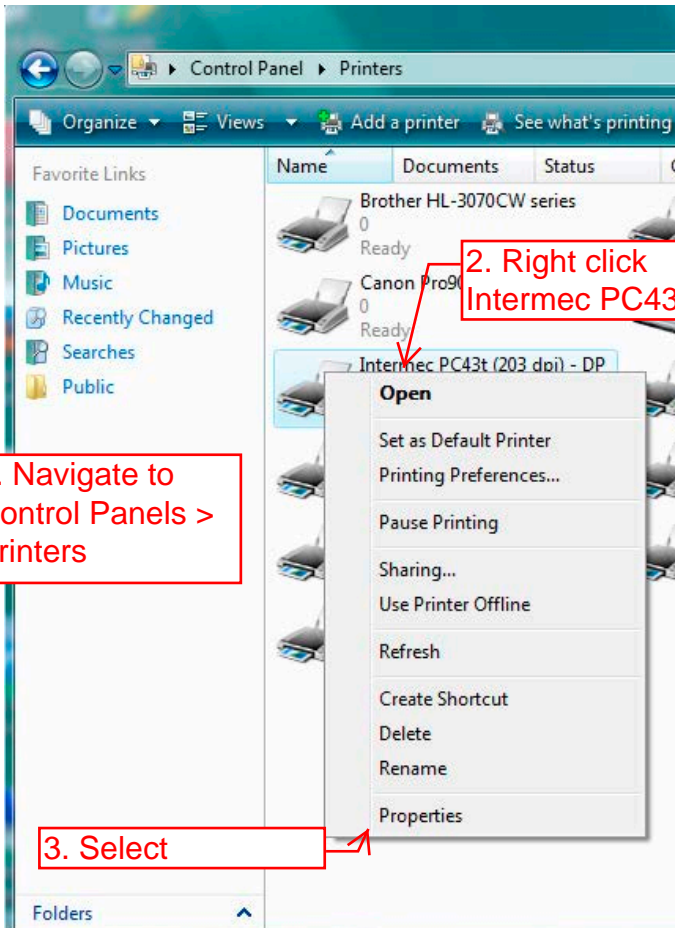
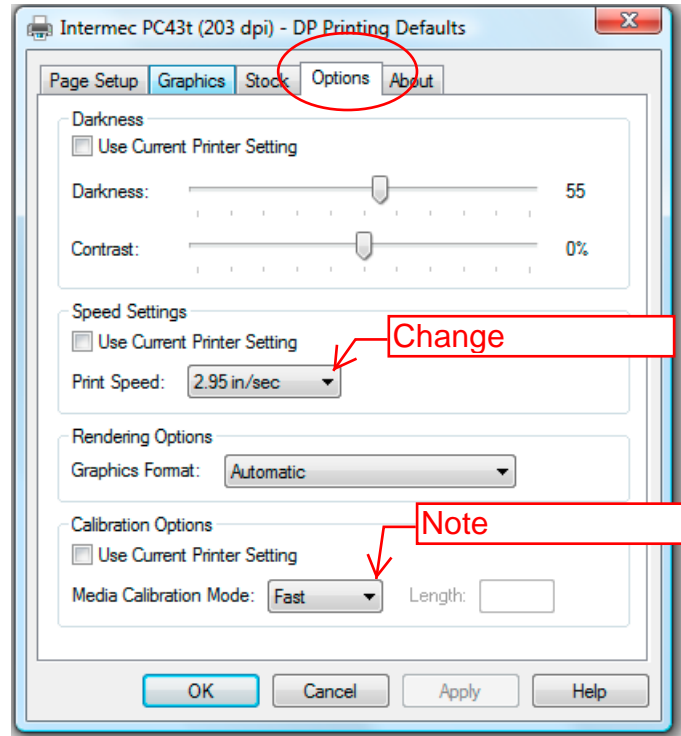
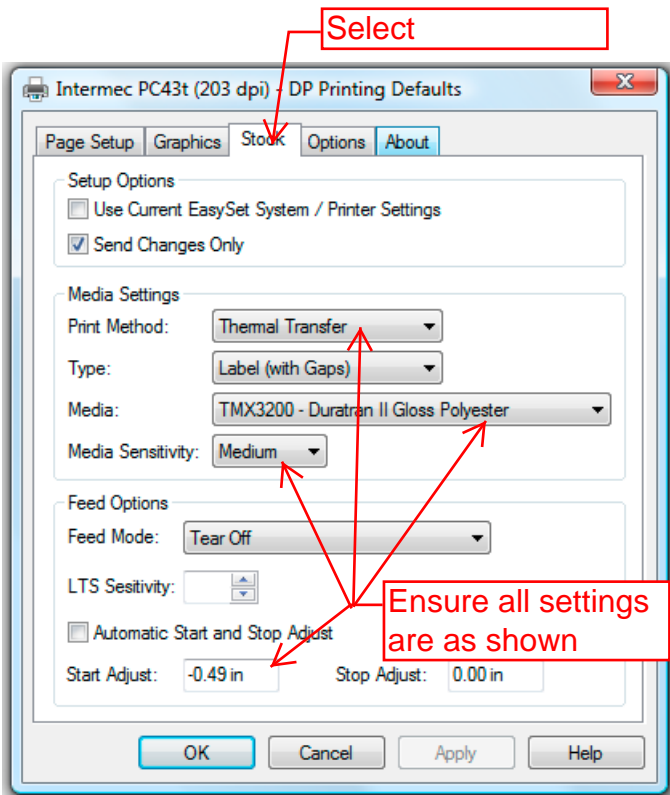


PC43T Intermec Printer Setup

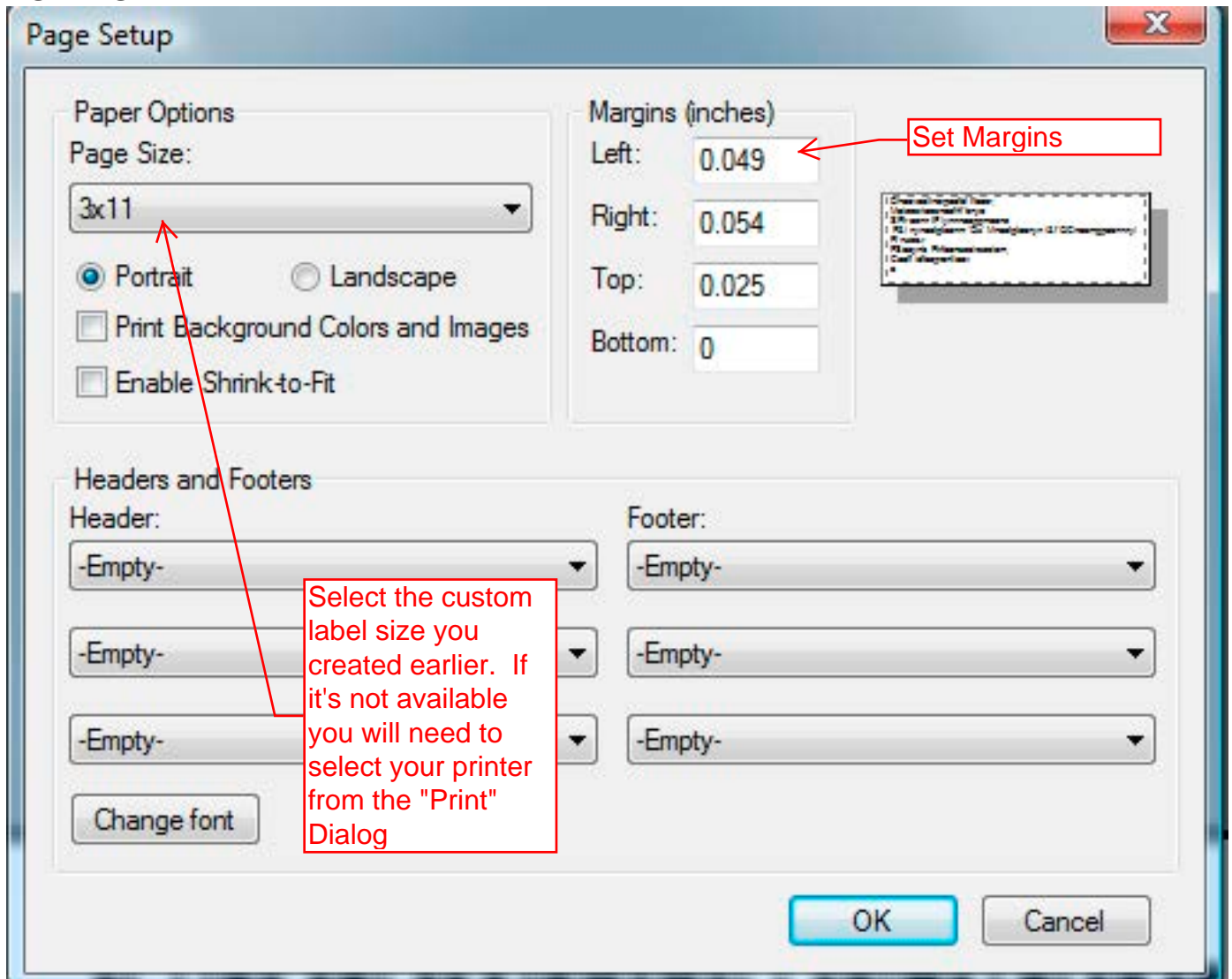
Note:

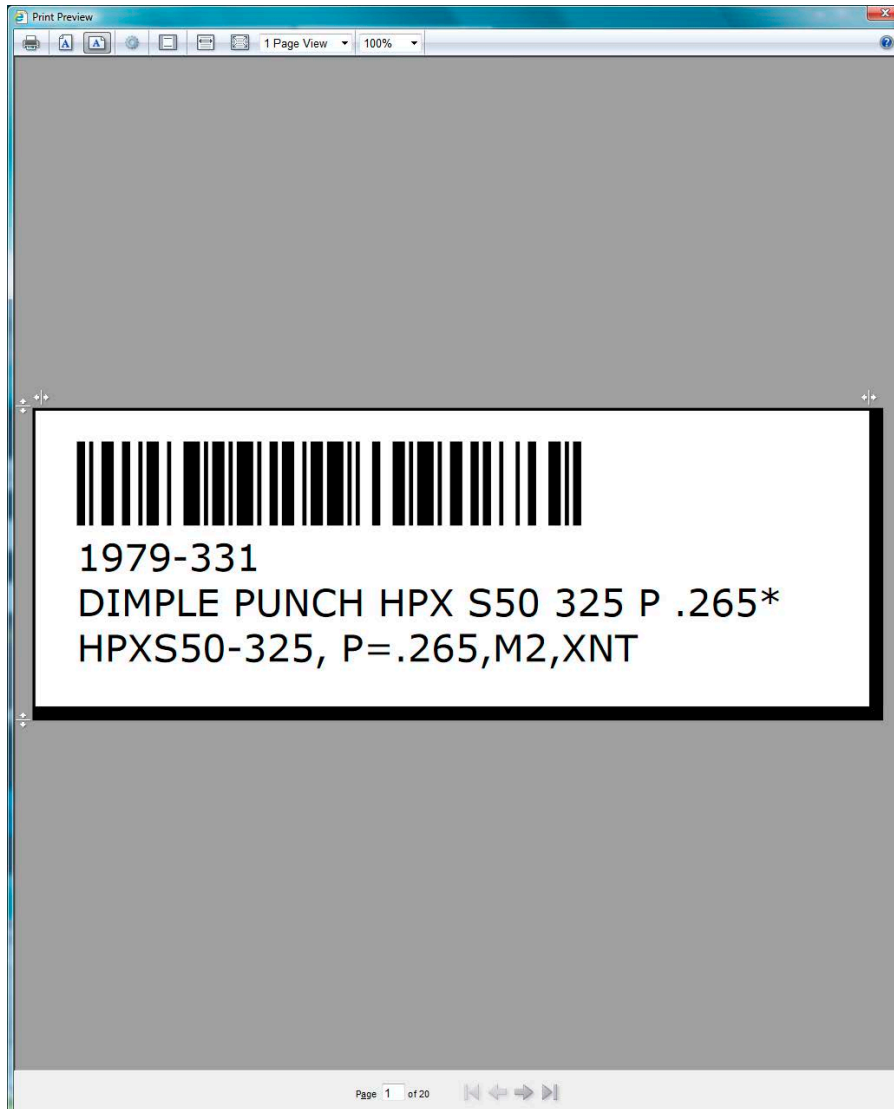
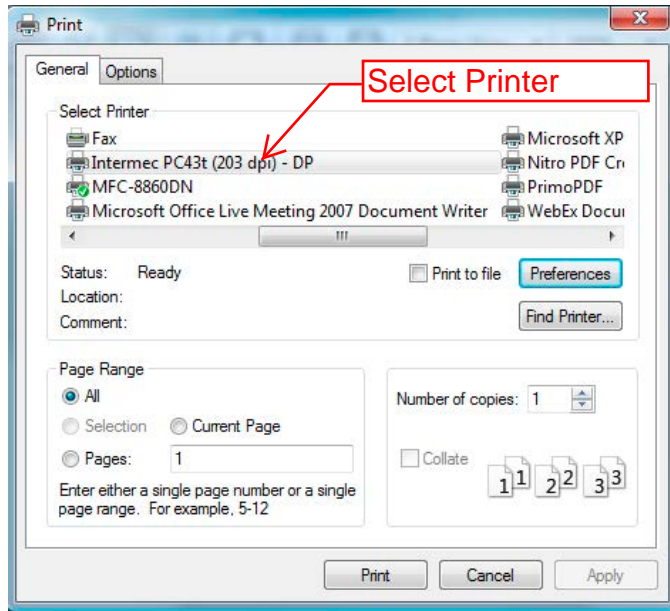
1. The example label is 3"x 1" for other label sizes the process is the same, please contact support.
2. Label template selection and configuration is available at Administration > Item Database Tools > Print Labels





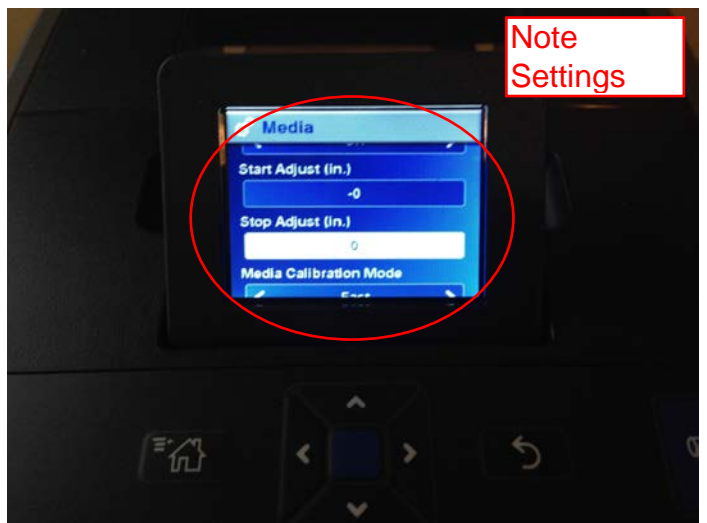
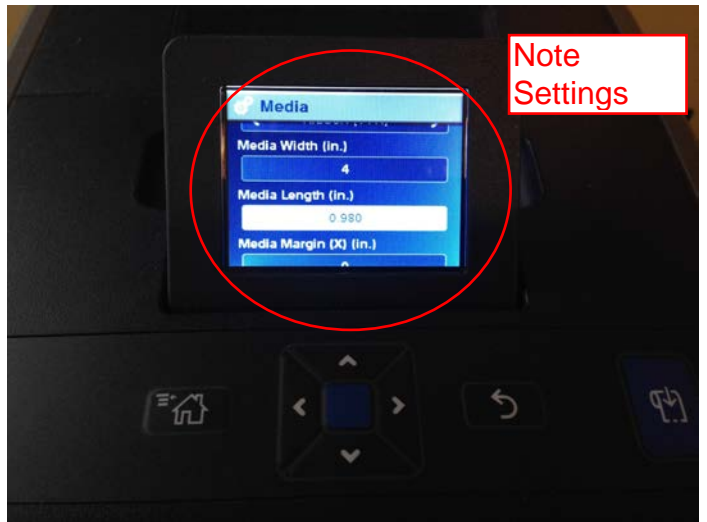
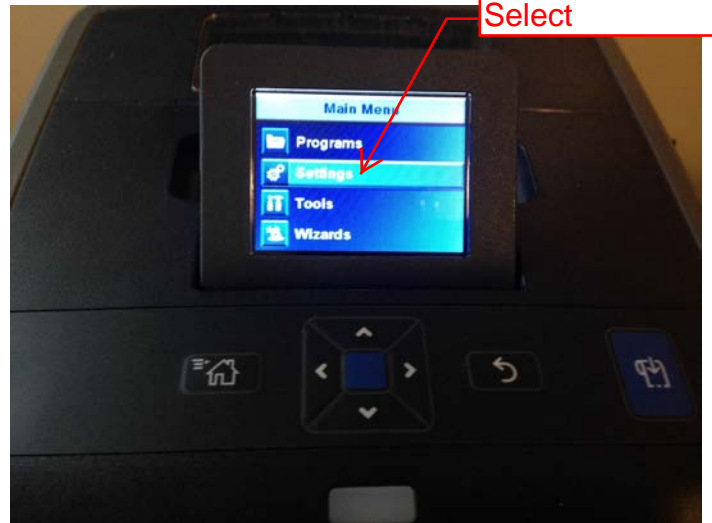
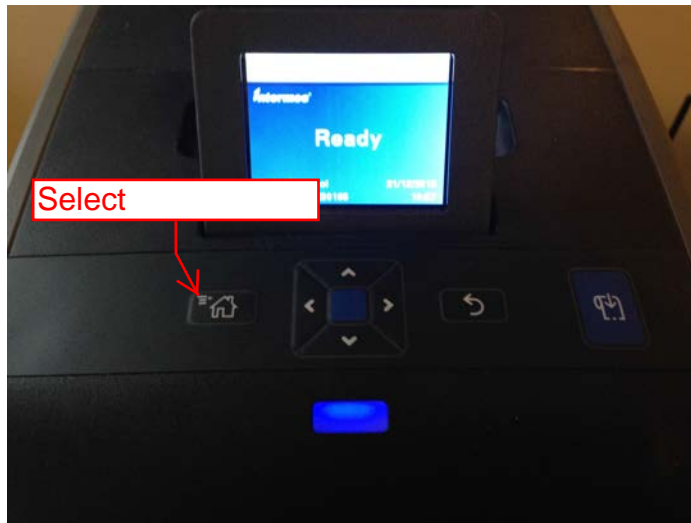
Configuring Printer Preferences



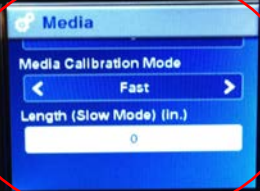


Printer Setup from Printer LCD Screen

This is a supplemental operation



Note
Settings



Note
Settings



Note
Settings



Note
Settings

