



Product End-of-Life Disassembly Instructions

Product Category: Monitors and Displays

Marketing Name / Model

[List multiple models if applicable.]

E271i 27-inch LED Backlit Monitor

Name / Model #2

Name / Model #3

Name / Model #4

Name / Model #5

Purpose: The document is intended for use by end-of-life recyclers or treatment facilities. It provides the basic instructions for the disassembly of HP products to remove components and materials requiring selective treatment, as defined by EU directive 2002/96/EC, Waste Electrical and Electronic Equipment (WEEE).

1.0 Items Requiring Selective Treatment

1.1 Items listed below are classified as requiring selective treatment.

1.2 Enter the quantity of items contained within the product which require selective treatment in the right column, as applicable.

Item Description	Notes	Quantity of items included in product
Printed Circuit Boards (PCB) or Printed Circuit Assemblies (PCA)	With a surface greater than 10 sq cm USB BD, Main BD, POWER BD	3
Batteries	All types including standard alkaline and lithium coin or button style batteries	0
Mercury-containing components	For example, mercury in lamps, display backlights, scanner lamps, switches, batteries	0
Liquid Crystal Displays (LCD) with a surface greater than 100 sq cm	Includes background illuminated displays with gas discharge lamps Panel	1
Cathode Ray Tubes (CRT)		0
Capacitors / condensers (Containing PCB/PCT)		
Electrolytic Capacitors / Condensers measuring greater than 2.5 cm in diameter or height	Power BD only (C805)	1
External electrical cables and cords	USB cable, Display cable, DVI cable, Power cord	4
Gas Discharge Lamps		0
Plastics containing Brominated Flame Retardants		0
Components and parts containing toner and ink, including liquids, semi-liquids (gel/paste) and toner	Include the cartridges, print heads, tubes, vent chambers, and service stations.	0
Components and waste containing asbestos		0
Components, parts and materials containing refractory ceramic fibers		0
Components, parts and materials containing radioactive substances		0

2.0 Tools Required

List the type and size of the tools that would typically be used to disassemble the product to a point where components and materials requiring selective treatment can be removed.

Tool Description	Tool Size (if applicable)
Description #1 SCREW DRIVER(PHILLIPS HEAD)	#2
Description #2 SCREW DRIVER(PHILLIPS HEAD)	#0
Description #3	
Description #4	
Description #5	

3.0 Product Disassembly Process

3.1 List the basic steps that should typically be followed to remove components and materials requiring selective treatment:

1. Take the EPS out off carton
2. Remove Stand Base From Display Head
3. Remove Rear Cover From Display Head
4. Remove the shielding from the display
5. Remove Front Cover From Display Head ; and remove Key Board Off From Front Cover
6. Decomposition of the mainboard iron
7. Pull out the wire from the PCBA
- 8.

3.2 Optional Graphic. If the disassembly process is complex, insert a graphic illustration below to identify the items contained in the product that require selective treatment (with descriptions and arrows identifying locations).

HP E271i

Disassembly Process

이
3장

장
문서

이
2장

Eddy . zhang

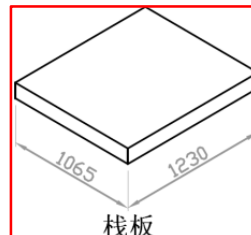
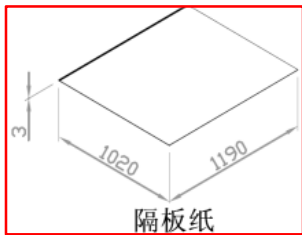
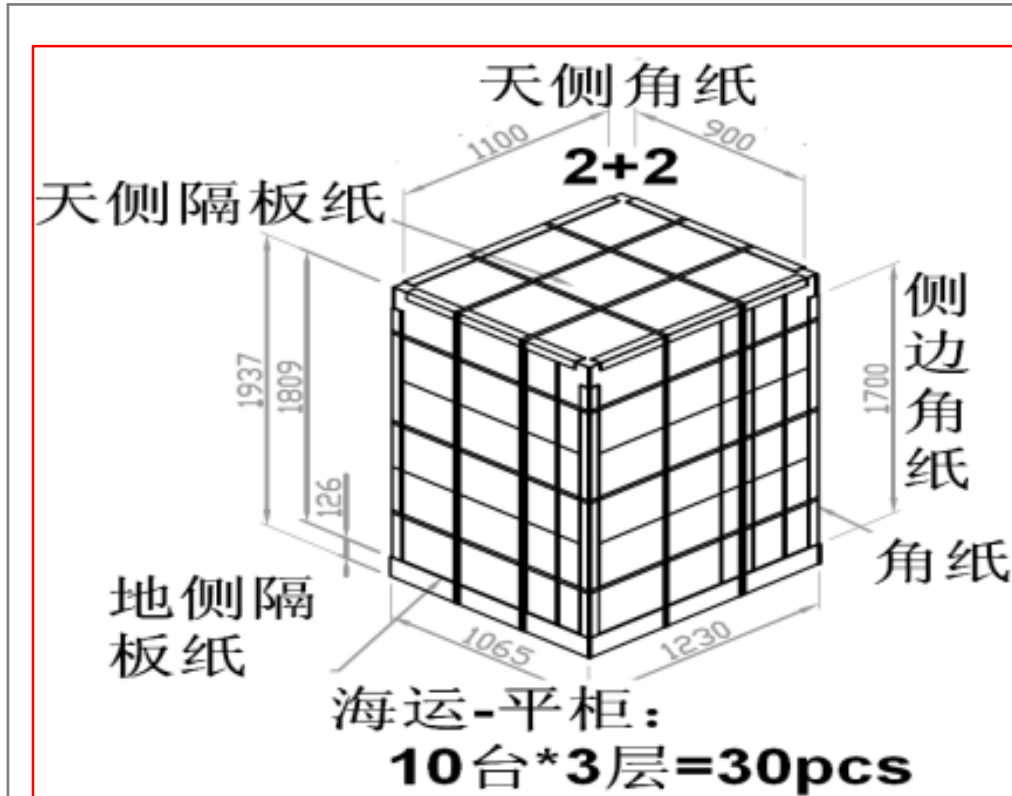
IE

2013/07

HP E271i_Display_Raken_Disassy

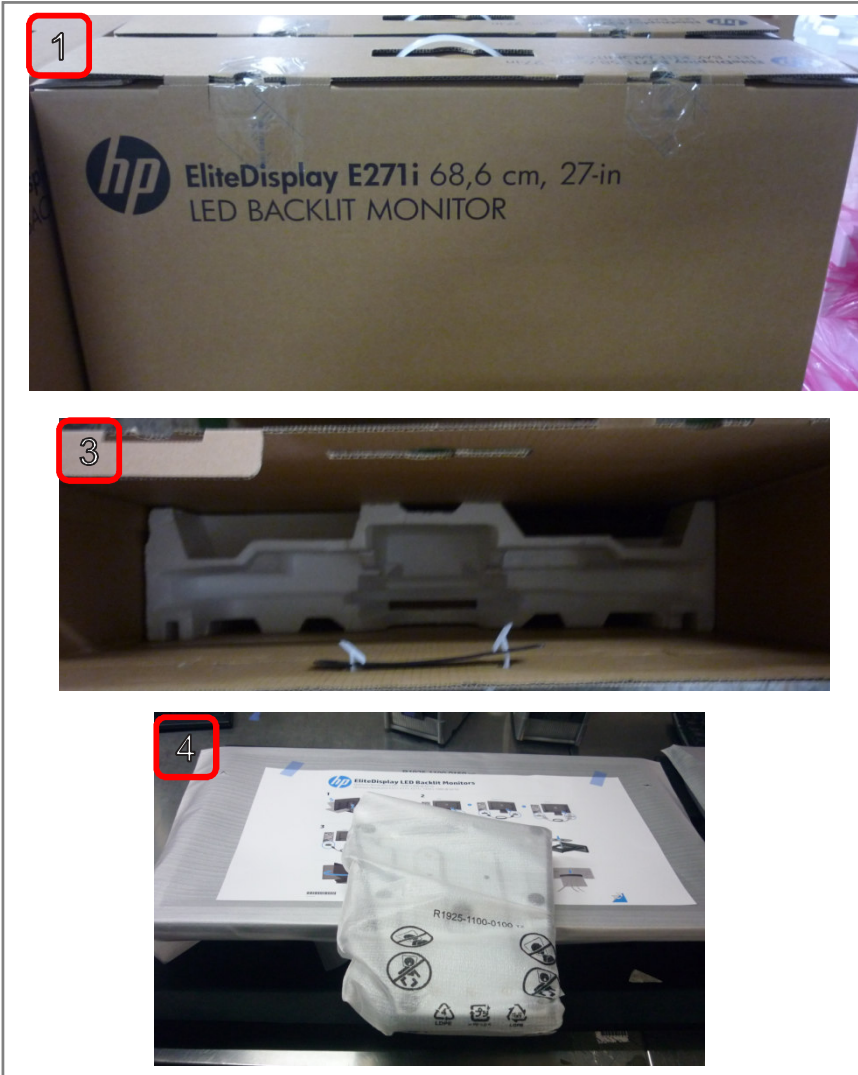


Sub、Take the MNT out off pallet;



HP E271i_Display_Raken_Disassy

1、 Take the EPS out off carton;



RGB cable

DP cable

USB cable

Dot-Kit

HP E271i_Display_Raken_Disassy



2、 Remove Stand Base From Display Head;



HP E271i_Display_Raken_Disassy



3、 Remove Rear Cover From Display Head ;



HP E271i_Display_Raken_Disassy



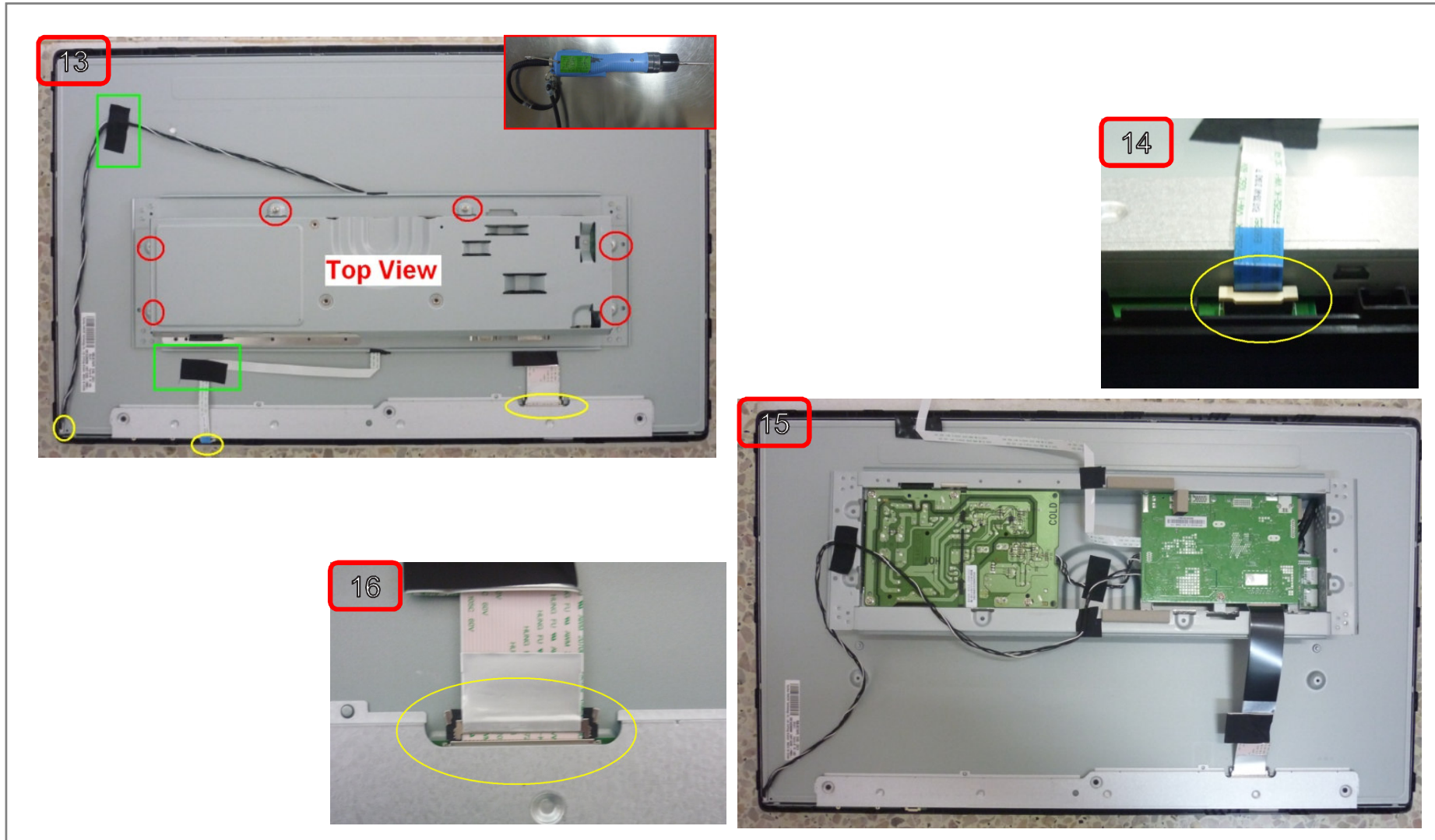
All view for base and MNT ;



HP E271i_Display_Raken_Disassy



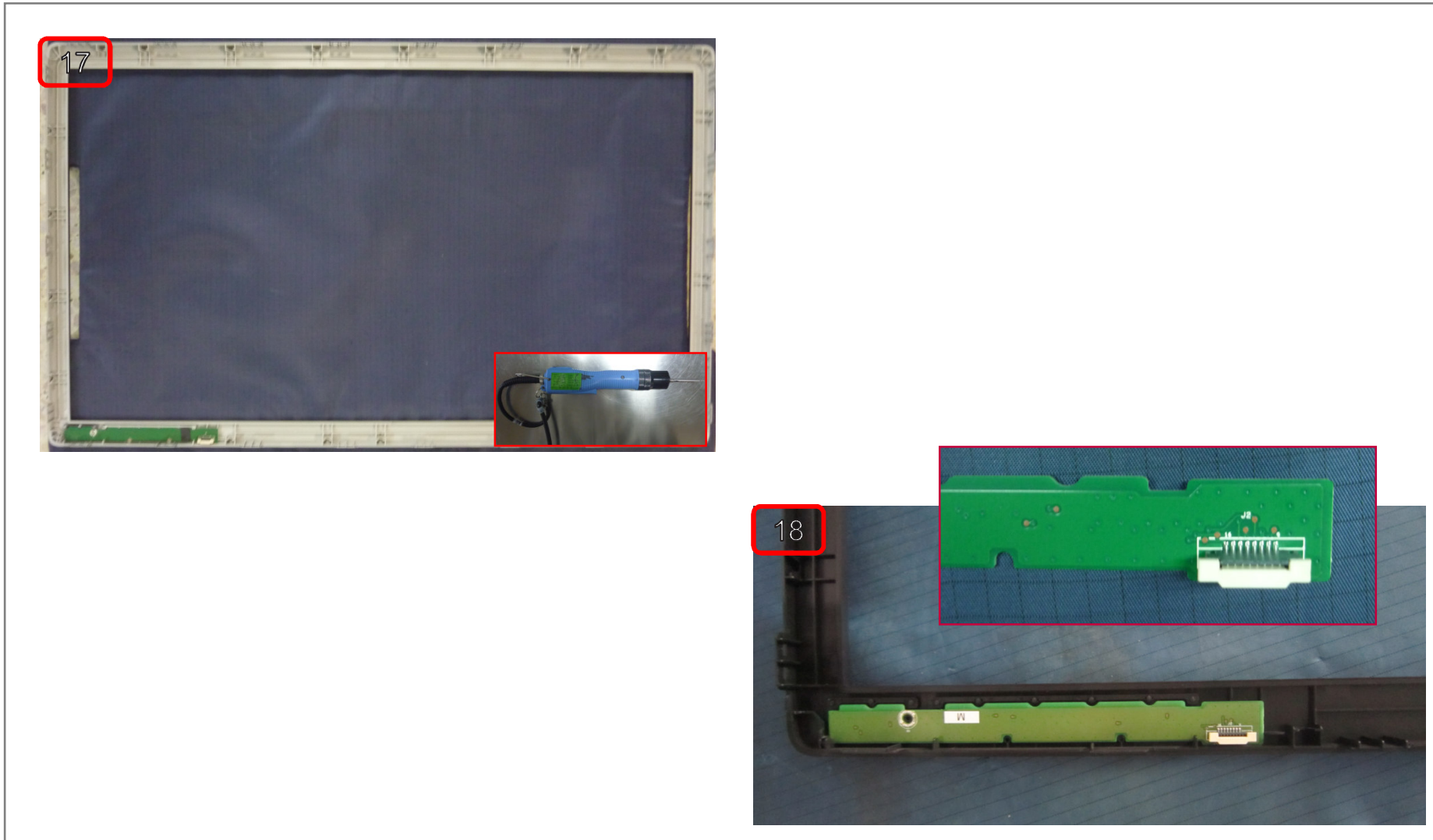
4、 Remove the shielding from the display;



HP E271i_Display_Raken_Disassy

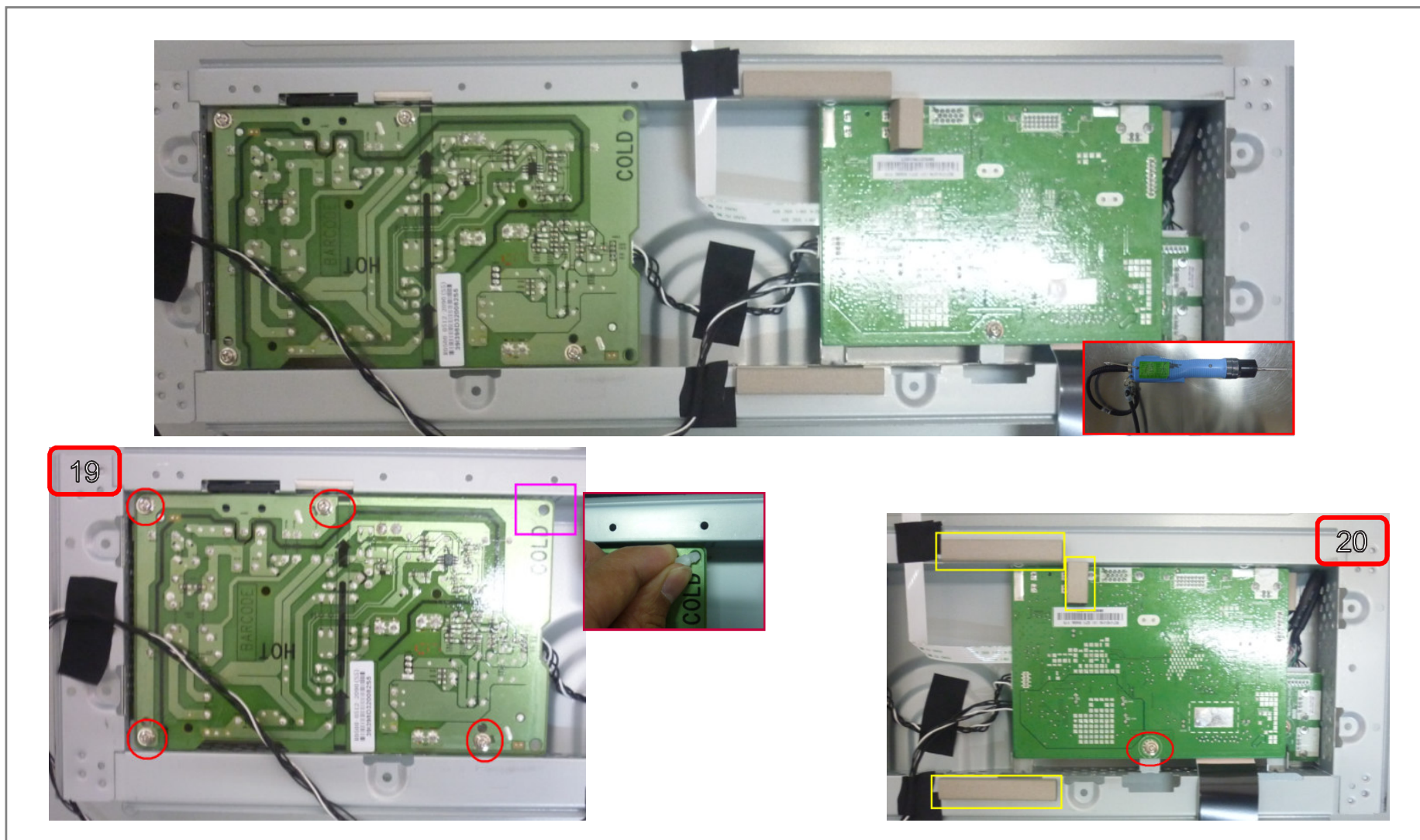


5、 Remove Front Cover From Display Head ; and remove Key Board Off From Front Cover;

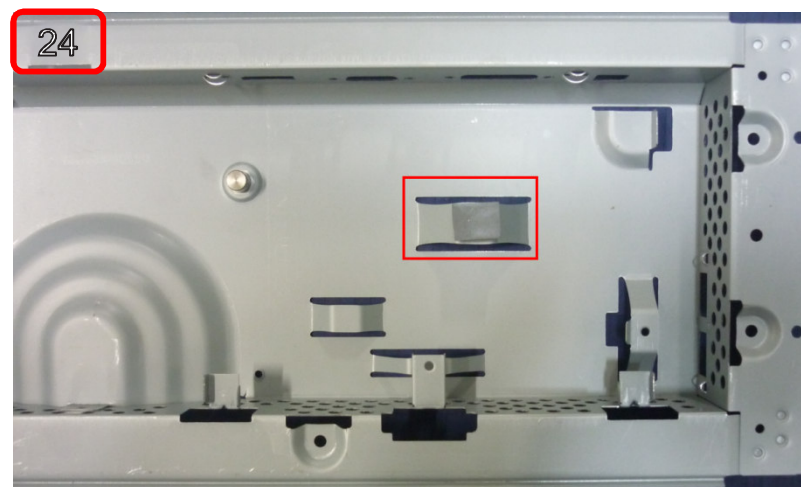
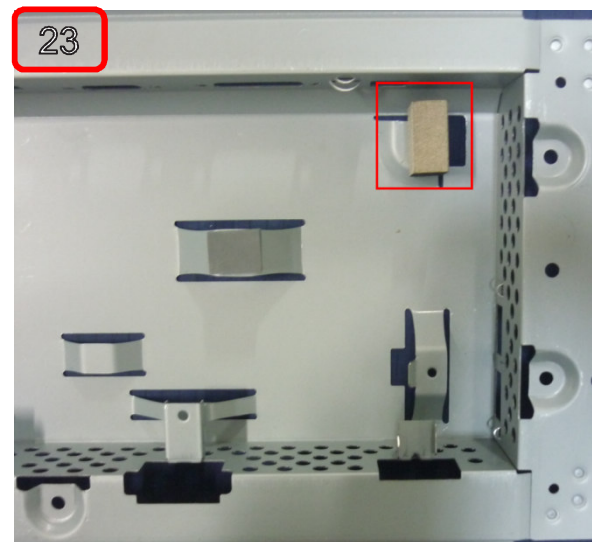
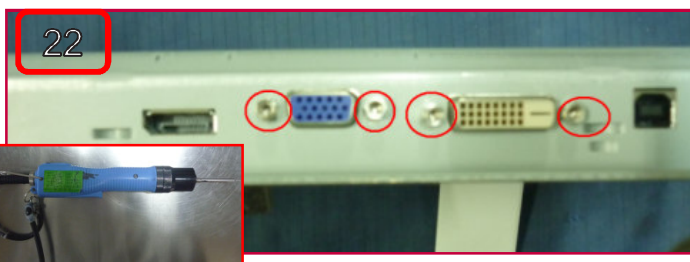


HP E271i_Display_Raken_Disassy

6、 Decomposition of the mainboard iron ;



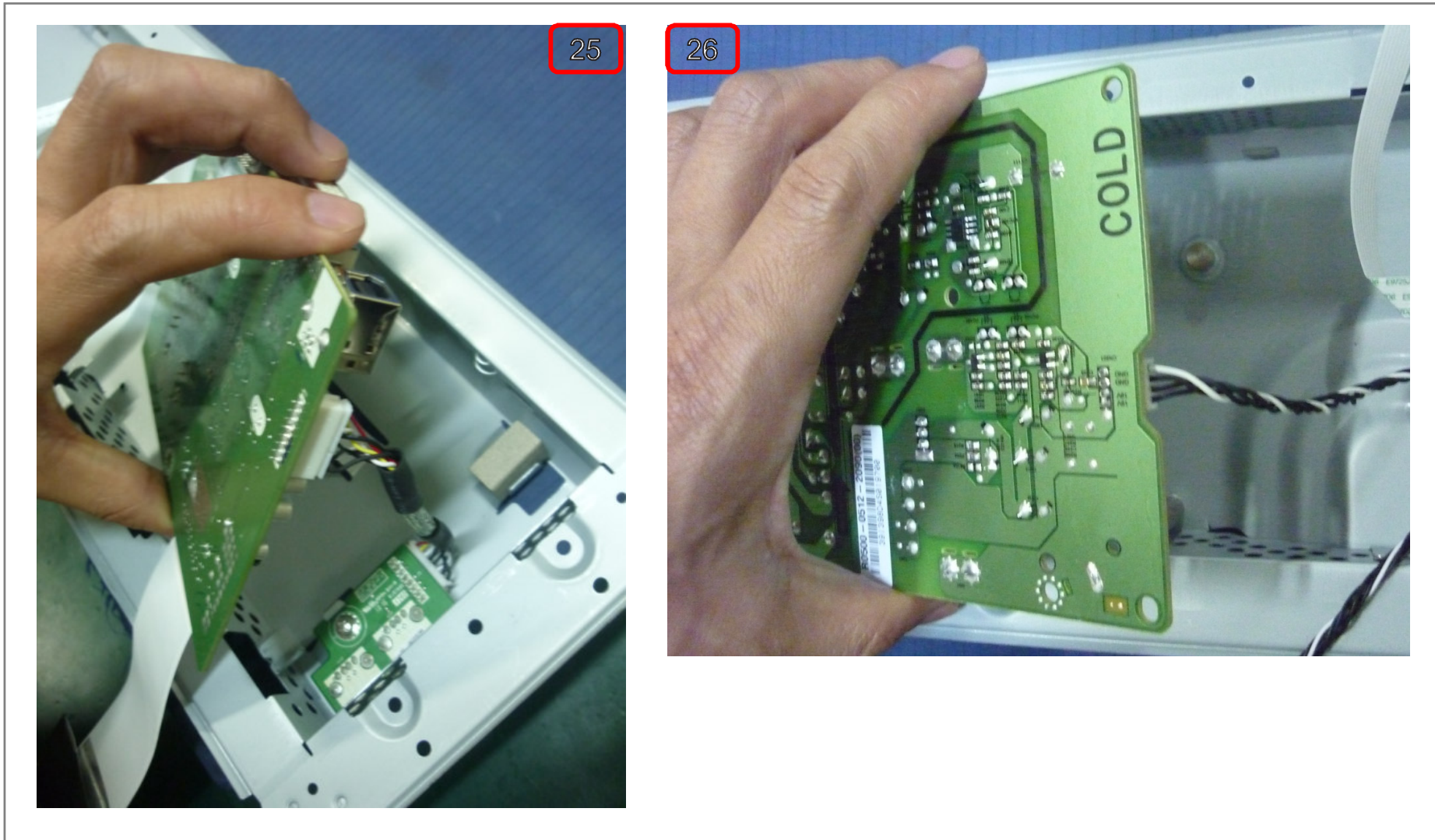
HP E271i_Display_Raken_Disassy



HP E271i_Display_Raken_Disassy



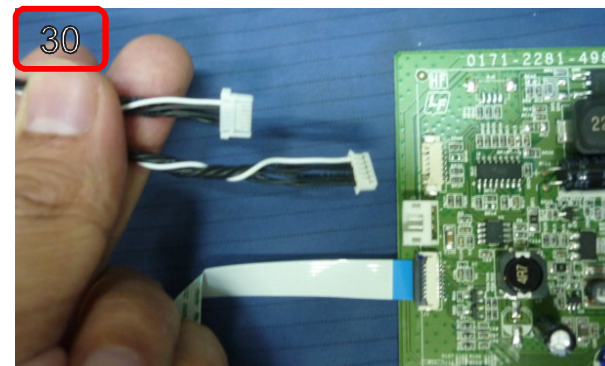
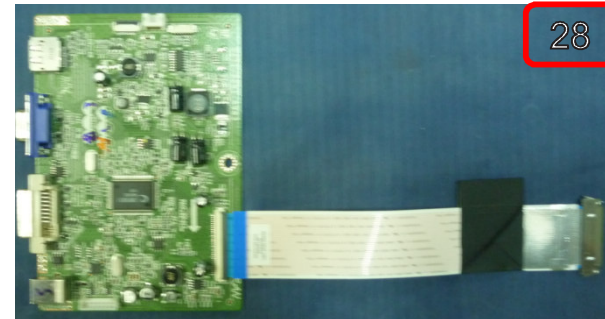
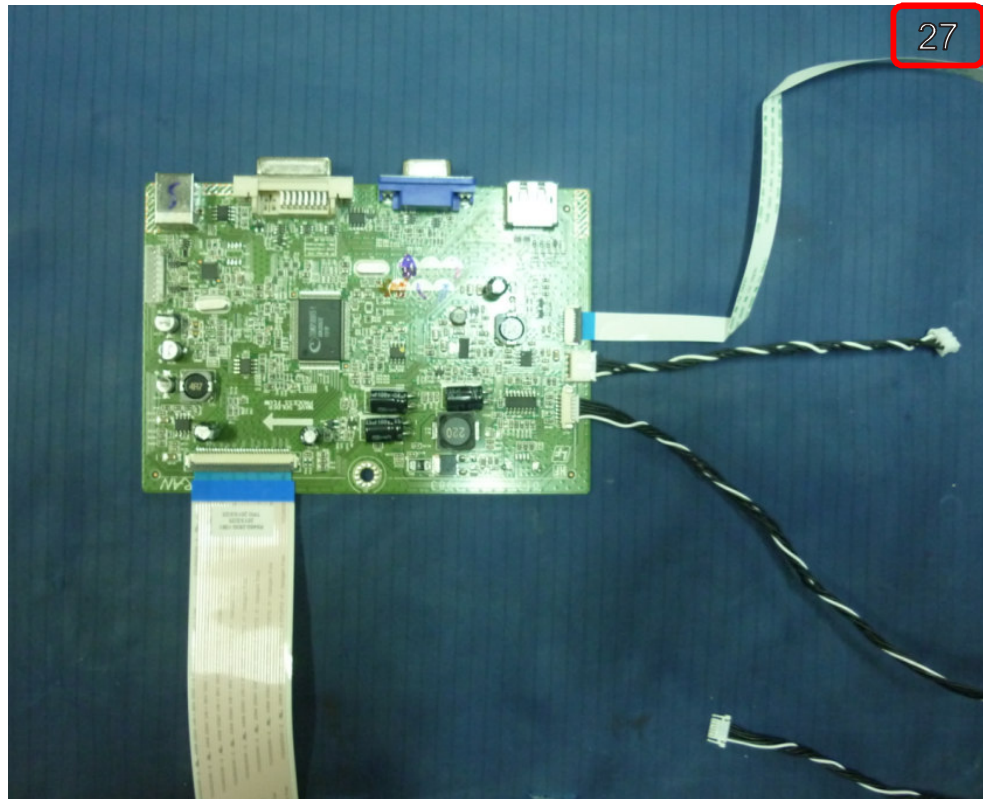
7、 Pull out the wire from the PCBA ;



HP E271i_Display_Raken_Disassy



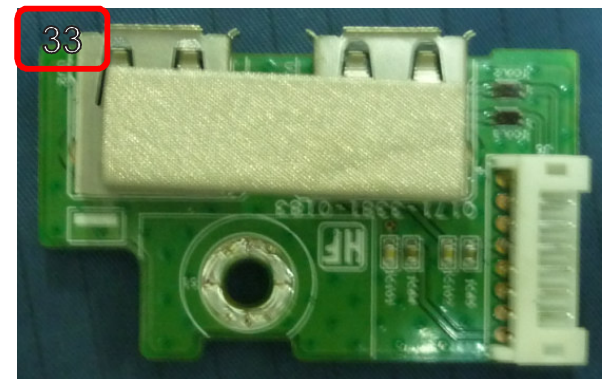
Pull out the wire from the Main B/D ;



HP E271i_Display_Raken_Disassy



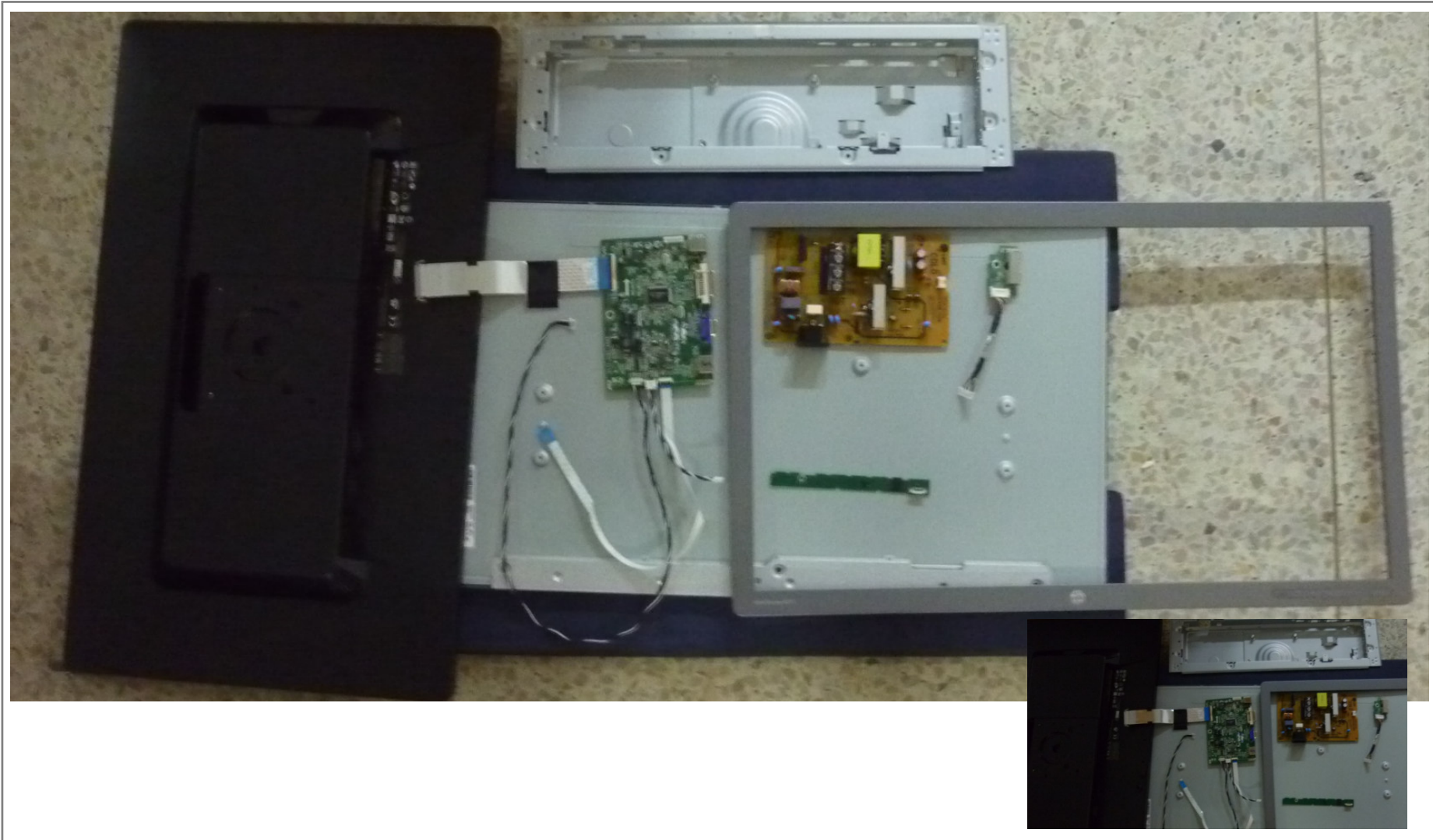
Pull out the wire from the Power and USB B/D ;



HP E271i_Display_Raken_Disassy



All material as shown below ;



HP E271i_Display_Raken_Disassy



8、Bill of materials ;

M27NAHPA2RF-E271I-1					
美规					
Describe	P/N	No	Describe	P/N	No
SET ASS'Y HP E271 Raken RBBLM270WF5-SAA1 (NA)	-3527-0142-0300	1	PACKING ASS'Y HP E271 (NA)	-3527-0532-0312	1
License: HDMI	0950-0000-0030	1	PE BAG 340*230*0.08T (VOJ370)	1925-1100-3140	0.033
SOFTWARE M-Star HDCP KEY CODE (China)	0960-0000-0070	1	HANDLE-A FOR CARTON (L1-150T)	1925-1700-0030	1
SPACER SUPPORT MC-7	1701-1500-1650	1	HANDLE-B FOR CARTON (L1-150T)	1925-1700-0040	1
MAC. SCREW-MF M4.0*10.0L,BLK-NI	1720-3004-1080	4	CARTON LABEL (HP OBI-WAN24)	1936-1400-3390	1
MAC. SCREW-MH #4-40*5.0L,Ni	1720-7044-0520	4	S/N LBL for CTN 40*15(ART PAPER #80) B&O V34	1936-1400-3670	1
ACETATE CLOTH TAPE 20*20mm	1947-1200-0341	4	HP SECURITY TAPE(W72*L50000*0.065t)(X2301)	1947-1200-7830	0.3
ACETATE CLOTH TAPE 20*45mm	1947-1200-0401	3	ACCESSORY ASS'Y HP E271 (NA)	-3527-0372-0393	1
PAPER TAPE (Four Pillars-CM-35 20.0 wide)	1947-1200-1580	0.11	POWER CORD 1900mm 125V UL/CSA BLACK (HP)	0320-4000-0200	1
GASKET BLOCK (10.0W* 20.0L*17.0H)(HP Obi Wan-24)	1947-1700-0230	1	POWER CORD 1900mm 10A 125V UL/CAS(WS-001F/WS-002)(HP)	R032040W00040	1
SHIELDING AL. TAPE (60*25mm)	1947-1710-1002	1	PE BAG(W250*L275*0.04t)(X2301)	1925-1100-4200	1
Gasket Block (L30*W10*H3.0)(VP503)	1947-1800-1660	1	DISPLAY PORT(1.2) CABLE 2000mm #30*5P+#30*5C Cu 91%(E271)	R032100S01131	1
THERMAL PAD (L15*W12*6.0t)(S230HL bd)	1947-1900-0540	1	DISPLAY PORT CABLE 2000mm #30*5P #30*5C Cu 75%(E271)	R032100J01130	1
USB BD ASS'Y (HP E271)	3527-0022-0138	1	USB 2.0 CABLE A-B type 2000mm #28(1P+2C) AL 90% BLK(E271)	R032100S01141	1
DISPLAY BD ASS'Y (HP E271)	3527-0052-0156	1	USB 2.0 CABLE A-B type 2000mm #28(1P 2C) AL 85% BLK(E271)	R032100J01140	1
MAIN BD ASS'Y (HP E271)	3527-0182-0150	1	RGB CABLE 1800mm #30*4P+#30*7C AL 88% SVHC(E271)	R032100S01150	1
WH A2001Y-04/A2001Y-04 #24 120mm W/B HF	R046010040871	1	RGB CABLE 1800mm #30*4P #30*7C AL 85% SVHC(E271)	R032100J01150	1
WH A2001Y-08/A2001Y-08 #28 100mm HF	R046010080712	1	Quick Setup Poster HP E271i	R192513000540	1
WH FFC 8P(1.0mm) 390mm(3FOLD) G/F (A8+A17/V-CUT)HF	R046028080491	1	Warranty Card, HP Display - LA(3-3-3)(691374-161)	R192514000240	1
WH FFC 30P(1.0mm)250mm(2+PRO+Mylar)G/F W/CONN(A15+BC)+AL HF	R046028301062	1	Warranty Card, HP Display, BR(3-3-3)(691374-201)	R192514000250	1
WH A1251Y-06/SHJP-06V #28 650mm W/B HF	R046030060251	1	Card, Commercial Advantage Accessories(633936-001)	R192514000260	1
A-D PSU 2.63A 19V PSEB-A215A HF_HP Bridge E271	R050005122090	1	Card, Elite Service(718344-001)	R192514000270	1
A-D PSU 2.63A 19V BZ.00188.001 HF_HP Bridge E271	R050005082080	1	CD KIT HP E271i	R194716000260	1
MAC. SCREW-MI M3.0*4.0L,Ni	R172050030421	6	EPS FOAM TOP(E271)	R192510000450	1
TAP. SCREW-TF #2.0*2.8L,Ni	R172130022820	3	EPS FOAM MIDDLE(E271)	R192510000460	1
MT.SCREW-MTF M3.0*7.0L,BLK-NI	R172730030750	2	EPS FOAM BOTTOM(E271)	R192510000470	1
MT. SCREW-MTRF M3.0*5.0L,Ni	R172740030520	6	EPE BAG(W700*L430*0.3t)(E271)	R192511000150	1
FRONT BEZEL(ABS+PET 94-HB/BLACK JACK,820BJS10201)(E271)ASS'Y	+ R180101009010	1	CARTON (BE FLUTE) HP E271i_E TYPE (NA/APJ)	R192512001310	1
REAR COVER(ABS+PET 94-HB/BLACK JACK,KS3074BK)(E271)ASS'Y	+ R180102016011	1	WoodPallet(W1065xL1230x126t)(E271)	R192523000310	0.033
BASE(ABS 94-HB/K21111)(E271)ASS'Y	+ R180105029010	1	Rating LBL(METALIZED POLYESTER #50) HP E271i	R193611000710	1
MAIN SHIELDING(SGCC 0.5t)(E271)ASS'Y	+ R181201000280	1	BLUE TAPE (18*50mm)(HC-3101)	R194712000200	0.12
Gasket Block 15L*15W*10mm HP E271i	R194718000080	1			
Gasket Block 60L*10W*4Hmm HP E271i	R194718000120	3			
RUBBER(SILICON/13*6*7t)(BLK)	R194720000090	2			
Mylar(PC/9*13.5*0.4t)(Black)	R194724000060	1			
RBBLM270WF5-SSA1	RBBLM270WF5-SAA1	1			