

*ScanSnap*

FUJITSU

Scan and save with a Mac or PC and  
now Android or iOS.  
"Go PC-less!"



shaping tomorrow with you



iOS



# Simple, Fast & Powerful! Accelerate yourself with ScanSnap iX500!

## Scan directly to mobile devices

Quickly bypass the computer to scan an image enhanced PDF or JPEG file directly to an iOS or Android mobile device or tablet.\*

## Built-in GI microprocessor

A dual-core CPU-mounted "GI" processor performs the intelligent image enhancement responsible for great looking images with dramatically faster results and more sophisticated connectivity:

- Image processing: Automatic corrections and image output
- Supports Wi-Fi: WPS (Wi-Fi Protected Setup) wireless LAN (IEEE802.11b/g/n)
- Supports USB 3.0

## Scan via Wi-Fi to computer

Scan via Wi-Fi to a single computer (Windows or Mac). This allows for flexible scanner placement, which can free-up valuable desk space.

## Advanced paper feeding system

Inheriting the superior paper feeding technology of our professional-grade scanners, iX500 achieves exceptional feeding reliability using "Separation Roller" technology to minimize jams and multi-feeds.

## Ultrasonic multi-feed detection

For additional security and peace-of-mind, iX500 uses sound-waves to help ensure each page is scanned.

## Quick Menu saves time!

The ScanSnap Quick Menu for PC and Mac automatically pops up after scanning to provide you a variety of ways to be immediately productive with your scans. It can be easily customized to display just your favorites, present a recommendation, and even display custom profiles.



Quick Menu for Windows® shown



## Accelerated Searchable PDF creation

Making PDF files searchable at the point of scanning is a great way to keep them instantly accessible and now you can create a searchable PDF at nearly the same speed as a standard PDF.



## Scan there! ScanSnap Folder

Scan to virtually any application or web service that can open, insert or attach a PDF or JPEG file from your Windows® computer.



\* See list of supported devices at <http://scansnap.fujitsu.com>

## Runs on Windows® & Mac OS X computers

And now iOS and Android mobile device and tablets

## Easy One-button PDF creation

Just stack in the paperwork and press the scan button

## Handles a stack of documents

Load up to 50 sheets in the automatic document feeder

## Scans both sides of each page at the same time

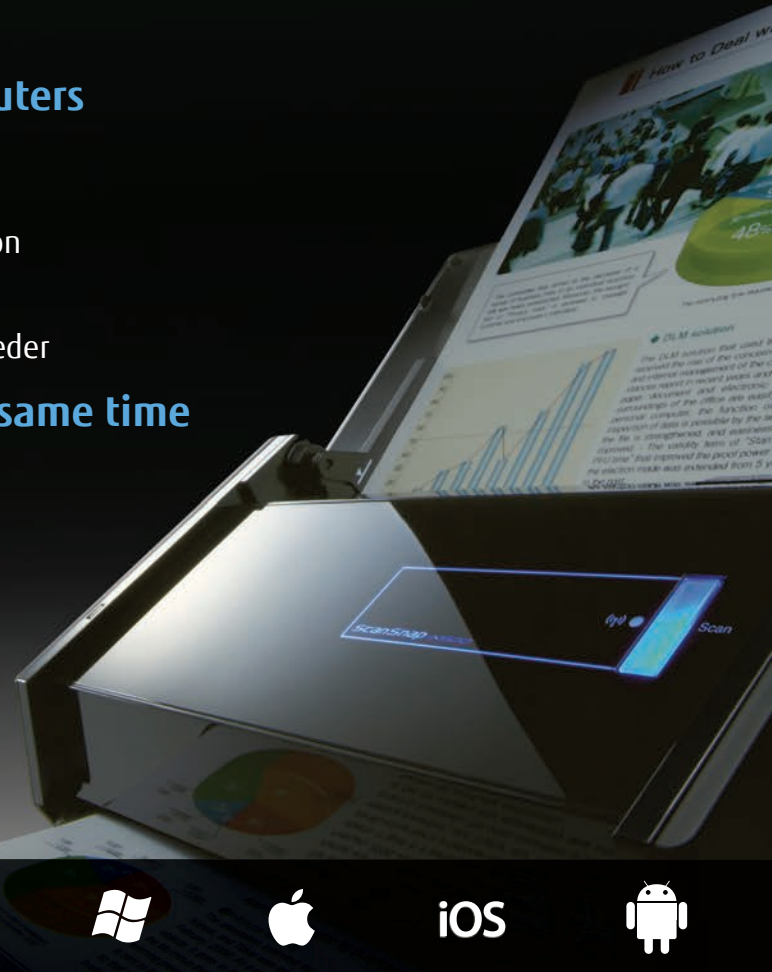
Images are automatically straightened and cropped with blank sides removed

## Fast and reliable document scanning

Scans up to 25 pages per minute with advanced paper handling

## Scans business cards to oversized documents

With carrier sheet, scans A3 documents, photos, and much more



### Scan to Cloud

For the ultimate in accessibility to your scans across multiple platforms, computers and devices, iX500 provides a convenient way to scan directly to your existing Evernote, Dropbox, Google Docs, SugarSync and Salesforce accounts.



### Organize business cards

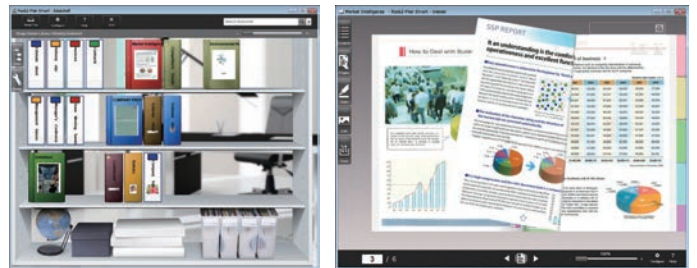
Scan, store, and edit business card information with the bundled CardMinder software for Mac and PC and even export data into other applications like Outlook, Address Book, Excel and Salesforce.



CardMinder for Windows® shown

### ScanSnap iX500 Deluxe model

For Windows® users, Rack2-File® Smart is a feature-rich scanning and content viewing application incorporating an ultra-intuitive bookcase and binder interface that gives users a familiar and enjoyable interaction with their scanned paperwork. Magic Desktop is designed to organize scans from ScanSnap as well as memos and images from mobile devices and upload your information to Facebook.



### About Fujitsu Canada

Fujitsu Canada, Inc. provides a complete portfolio of business technology services, computing platforms, and industry solutions. Fujitsu platform products are based on integrated document management and imaging systems, as well as scalable, reliable and high-performance server, storage, software, point-of-sale, and mobile technologies. Fujitsu combines its renowned platform offerings with a full suite of onshore, near shore and offshore system integration, outsourcing, and datacenter services covering applications, operations, infrastructure, customer service, and multi-vendor lifecycle services. Fujitsu provides industry-specific solutions for retail, manufacturing, healthcare, government, education, financial services, and telecommunications sectors.

For more information, please see:  
<http://solutions.ca.fujitsu.com/>

General Specifications			
Product Name/Part Number		ScanSnap iX500/PA03656-B002, ScanSnap iX500 Deluxe/PA03656-B012	
Scanner Type		Automatic Document Feeder (ADF), Duplex Scanning	
Scanning Modes		Colour, Grayscale, Monochrome, Automatic Detection (colour / grayscale / monochrome <sup>3</sup> detection)	
Image Sensor		Colour CIS ( Contact Image Sensor ) x 2 (front / back)	
Light Source		3 colour LED (Red / Green / Blue)	
Scanning Speed (A4 portrait) <sup>1</sup>	Auto Mode <sup>2</sup>	Simplex or Duplex, 25 pages per minute (ppm)	
	Normal Mode	Colour & Grayscale 150 dpi, Monochrome 300 dpi, Simplex/Duplex, 25 ppm	
	Better Mode	Colour & Grayscale 200 dpi, Monochrome 400 dpi, Simplex/Duplex, 25 ppm	
	Best Mode	Colour & Grayscale 300 dpi, Monochrome 600 dpi, Simplex/Duplex, 25 ppm	
	Excellent Mode <sup>3</sup>	Colour & Grayscale 600 dpi, Monochrome 1200 dpi, Simplex/Duplex, 7 ppm	
Document size	Normal Mode without Carrier Sheet	A4, A5, A6, B5, B6, Business Card, Post Card, Letter, Legal and Custom Size. Max: 8.5 X 14.17 in. (216 X 360 mm), Min: 2 X 2 in. (50.8 X 50.8 mm) <sup>3</sup> . Automatically recognizes document size.	
	Normal Mode with Carrier Sheet <sup>3</sup>	Use of a Carrier Sheet permits the scanning of A3, B4, 11 x 17 in. and photographs as well as the document sizes listed above	
	Long Paper Scanning <sup>3, 4</sup>	34 inches in length (863 mm)	
Multi-feed detection		Supported (Standard) ultrasonic multi-feed detection sensor	
Paper Weight (Thickness)		<ul style="list-style-type: none"><li>■ 11 to 56 lb (40 to 209 g/m<sup>2</sup>)</li><li>■ A8 Size: 34 to 56 lb (127 to 209 g/m<sup>2</sup>)</li><li>■ Cards: (ISO7810 ID-1 type conforming) can be used. (thickness 0.76 mm or less)</li><li>■ Embossed card : useable (Landscape only)</li></ul>	
Paper Chute Capacity <sup>5</sup>		Maximum 50 sheets (A4 (letter size) at 21 lb or 80 g/m <sup>2</sup> )	
Interface		USB 3.0 (USB 2.0 / USB 1.1 Compatible) <sup>6</sup>	
Wi-Fi Interface <sup>7</sup>	Observed standards	IEEE802.11b / IEEE802.11g / IEEE802.11n	
	Communication mode	Infrastructure mode	
	Frequency <sup>8</sup>	2.412 GHz to 2.462 GHz / 2.412 GHz to 2.472 GHz	
	Communication distance	Indoors, 50 m (Recommended: indoors, within 25 m) *May vary depending on the surrounding environment and the access point to be connected	
	Security <sup>8</sup>	WPA-PSK (TKIP / AES), WPA2-PSK (TKIP / AES), WEP (64-bit / 128-bit)	
Easy installation		WPS2.0 supported (button / PIN code)	
Power Requirement		AC 100 to 240 V, 50 / 60 Hz	
Power Consumption	USB connected	Operating Mode	20 W or less
		Standby Mode	1.6 W or less (Wi-Fi Switch Off)
	Wi-Fi connected	Operating Mode	20 W or less
		Standby Mode	2.5 W or less
Operation Environment		Temperature	41 to 95 °F (5 to 35 °C)
		Relative humidity	20 to 80 % (No Condensation)
Dimensions (W x D x H) <sup>10</sup>		11.5(W) x 6.2(D) x 6.6(H) in. (292 x 159 x 168 mm)	
Device Weight		6.62 lb (3.0 kg)	
Environmental Compliance		ENERGY STAR <sup>®</sup> compliant / RoHS <sup>11</sup>	
Driver		Specific driver: <ul style="list-style-type: none"><li>■ Windows<sup>®</sup>: Does not support Twain/ISIS<sup>®</sup></li><li>■ Mac OS: Does not support Twain</li></ul>	
Limited Warranty		1 year limited exchange warranty. For full details visit <a href="http://solutions.ca.fujitsu.com/warranty/scanner/">http://solutions.ca.fujitsu.com/warranty/scanner/</a>	
Service Options		Extended exchange warranty available	

1: Scanning speeds may vary due to the system environment used. 2: Documents measuring 5.8 inches (148 mm) in length or less are scanned in "Best Mode", while other documents are scanned in "Better Mode". 3: Only Computer connection. 4: ScanSnap iX500 is capable of scanning documents that exceed A4 size in length. ScanSnap iX500 supports the scanning of longer documents in all modes except in "Excellent Mode". 5: Maximum capacity varies depending upon paper weight. 6: Some computers do not recognize the ScanSnap when it is connected to a USB 3.0 port. In this case, please use a USB 2.0 port. 7: Only Android<sup>™</sup> / iOS in case of Wi-Fi connection. Wi-Fi scanning to a computer is unavailable when the scanner is connected by USB. 8: Values depend on Country. 9: IEEE802.1X Authentication is not supported. 10: Excluding the stacker and other external attachments. 11: PFI LIMITED, a Fujitsu company, has determined that this product meets RoHS requirements (2002/95/EC).

Software	Windows <sup>®</sup>	Mac OS
Driver <sup>12, 13</sup>	ScanSnap Manager V6.0	ScanSnap Manager V6.0
	ScanSnap Organizer V5.0	—
Applications	CardMinder <sup>™</sup> V5.0	CardMinder <sup>™</sup> V5.0
	ABBY FineReader for ScanSnap <sup>™</sup> 5.0	ABBY FineReader for ScanSnap <sup>™</sup> 5.0
	—	ABBY FineReader Express Edition for Mac 8.3
	Scan to Microsoft <sup>®</sup> SharePoint <sup>®</sup> 3.4	—
	Adobe <sup>®</sup> Acrobat <sup>®</sup> X Standard	—
	Evernote for Win 4.5	Evernote for Mac 3.3

12: Twain or ISS<sup>®</sup> applications cannot be used directly. 13: "One button" image file JPEG, PDF and searchable PDF generation. These functions are operable with ScanSnap Manager (ScanSnap specific driver)

Fujitsu and the Fujitsu logo are trademarks or registered trademarks of Fujitsu Limited. ABBYY<sup>™</sup> FineReader<sup>™</sup> Engine ©2011 ABBYY. OCR by ABBYY, ABBYY and FineReader are trademarks of ABBYY. Adobe, Acrobat are either registered trademarks or tradenames of Adobe Systems Incorporated in Canada and/or other countries. Evernote is a registered trademark or trademark of Evernote Corporation. Google, Google Docs, Android and Google Play are registered trademarks or trademarks of Google Inc. Intel, Pentium, and Intel Core are registered trademarks or trademarks of Intel Corporation in Canada and other countries. ISIS<sup>®</sup> is a registered trademark of EMC Corporation in Canada. Mac, Mac OS, OS X, iPad, iPhone and App Store are trademarks of Apple Inc. Microsoft, Windows, Windows Vista, Excel, PowerPoint, SharePoint and Internet Explorer are either registered trademarks or trademarks of Microsoft Corporation in Canada and/or other countries. Word is the product of Microsoft Corporation in Canada. Salesforce and Salesforce CRM are registered trademarks or trademarks of salesforce.com, inc. in Canada and other countries. ScanSnap, ScanSnap logo, ScanSnap Manager, ScanSnap Organizer, CardMinder and Rack2-Filer are registered trademarks or trademarks of PFI LIMITED in Japan. Wi-Fi and Wi-Fi Protected Setup are trademarks of Wi-Fi Alliance. Other company names and product names are the registered trademarks or trademarks of the respective companies. The statements provided herein are for informational purposes only and may be amended or altered by Fujitsu Canada, Inc. without notice or liability. Product description data represents Fujitsu design objectives and is provided for comparative purposes; actual results may vary based on a variety of factors. Specifications are subject to change without notice. Copyright ©2014 Fujitsu Canada, Inc. All rights reserved. FCL\_14\_1748

## FUJITSU CANADA, INC.

155 University Avenue, Suite 1600 Toronto, Ontario M5H 3B7  
 Telephone: 1-800-263-8716 Website: <http://www.fujitsu.ca>  
 Have a question? Email us at: [AskFujitsu@ca.fujitsu.com](mailto:AskFujitsu@ca.fujitsu.com)  
<http://www.fujitsu.com/ca/en>

Included items		
<ul style="list-style-type: none"> <li>1 ScanSnap</li> <li>1 AC Cable</li> <li>1 AC Adapter</li> <li>1 USB cable (USB 3.0 Supported)</li> </ul>	<ul style="list-style-type: none"> <li>1 Safety Precautions</li> <li>1 Setup DVD-ROM</li> <li>1 Adobe<sup>®</sup> Acrobat<sup>®</sup> DVD-ROM (PC Only)</li> <li>1 ScanSnap Carrier Sheet</li> </ul>	<ul style="list-style-type: none"> <li>1 Rack2-Filer Smart with Magic Desktop (Bundled with ScanSnap iX500 Deluxe Only)</li> </ul>

Consumables		
Description	Model Number	Remarks
Roller Set	PA03656-0001	Lifetime: Every 200,000 sheets or one year. (For ScanSnap iX500 only)
Cleaner F1	PA03950-0352	100 ml bottle. For use on the Brake roller and Pick roller
Cleaning cloths	CG90000-120001	1 pack (20 cloths) For use with F1 cleaner on Brake roller and Pick roller

\* These recommended lifetimes are for 21 lb. (80 g/m<sup>2</sup>) A4 sized documents. Therefore, appropriate replacement lifetimes may vary from other document types.

Windows®					
Compatible operating systems		Windows® 8 (32-bit / 64-bit)	Windows® 7 (32-bit / 64-bit)	Windows Vista® (32-bit / 64-bit)	Windows® XP (32-bit)
Driver/ Application <sup>14, 15</sup>	ScanSnap Manager V6.0	Supported	Supported	Supported <sup>16</sup>	Supported <sup>17</sup>
	ScanSnap Organizer V5.0	Supported	Supported	Supported <sup>16</sup>	Supported <sup>17</sup>
	CardMinder™ V5.0	Supported	Supported	Supported <sup>16</sup>	Supported <sup>17</sup>
	ABYYY FineReader for ScanSnap™ 5.0	Supported	Supported	Supported <sup>16</sup>	Supported <sup>17</sup>
	Scan to Microsoft®	Supported	Supported	Supported <sup>16</sup>	Supported <sup>17</sup>
	SharePoint® 3.4	Supported	Supported	Supported <sup>16</sup>	Supported <sup>17</sup>
	Adobe® Acrobat® X Standard <sup>18</sup>	Supported	Supported	Supported <sup>16</sup>	Supported <sup>17</sup>
Hardware Requirements	Evernote for Win 4.5	Supported <sup>19</sup>	Supported	Supported <sup>16</sup>	Supported <sup>17</sup>
	CPU <sup>20</sup>	Intel® Core™ 2 Duo 2.2 GHz or higher (Recommended: Intel® Core™ i5 2.5 GHz or higher)			
	Memory Capacity <sup>20</sup>	64-bit: 2 GB or more (Recommended: 4 GB or more) 32-bit: 1 GB or more (Recommended: 4 GB or more)			
	Display	1,024 × 768 pixels or higher	800 × 600 pixels or more		
	Disk Capacity <sup>21</sup>	4,010 MB free hard disc space for installation			
	DVD-ROM Drive	Required for installation			
	USB Port <sup>20, 22</sup>	USB3.0 <sup>23</sup> / USB2.0 / USB1.1			

14: This product supports Microsoft<sup>®</sup> Windows<sup>®</sup>. 15: Please refer to the ScanSnap Website for latest support information. 16: For use with Service pack 2 or higher. 17: For use with Service pack 3 or higher. 18: Requires Internet Explorer 7.0 or later, or, Firefox 3.5 or later. 19: Please refer to Adobe Systems Incorporated website for latest support information. 20: Scanning speeds may drop if recommended CPU, memory capacity and USB 1.1 requirements are not met. 21: .NET Framework 3.5 SP1 will be installed (requires 500 MB of disk space) together with either ScanSnap Manager, ScanSnap Organizer or CardMinder<sup>™</sup> for systems that do not have .NET Framework 3.5 SP1 installed. 22: ScanSnap operates on both USB 2.0 and USB 3.0 without any difference in performance. 23: Some computers do not recognize the ScanSnap when it is connected to a USB 3.0 port. In this case, please use a USB 2.0 port. \* System requirements may change depending on the duration of support and the support policy of the companies that make the software listed in the table above.

Mac OS				
Compatible operating systems		Mac OS x v10.8	Mac OS X v10.7	Mac OS X v10.6
Driver/ Application <sup>24, 25</sup>	ScanSnap Manager V6.0	Supported	Supported <sup>26</sup>	Supported <sup>27</sup>
	CardMinder <sup>™</sup> V5.0	Supported	Supported <sup>26</sup>	Supported <sup>27</sup>
	ABBY FineReader for ScanSnap <sup>™</sup> 5.0	Supported	Supported <sup>26</sup>	Supported <sup>27</sup>
	ABBY FineReader Express Edition for Mac 8.3	Supported	Supported <sup>26</sup>	Supported <sup>27</sup>
Hardware Requirements	Evernote for Mac 3.3	Supported	Supported <sup>26</sup>	Supported <sup>27</sup>
	CPU <sup>28</sup>	Intel <sup>®</sup> Core <sup>™</sup> 2 Duo 2.2 GHz or higher (Recommended: Intel <sup>®</sup> Core <sup>™</sup> i5 2.5 GHz or higher)		
	Memory Capacity <sup>28</sup>	2 GB or more (Recommended: 4 GB or more)		
	Display	1,024 × 768 pixels or more		
	Disk Capacity	2,090 MB free hard disc space for installation		
	DVD-ROM Drive	Required for installation		
	USB Port <sup>28, 29</sup>	USB3.0 <sup>30</sup> / USB2.0 / USB1.1		

24: This product supports Mac operating systems. 25: Please refer to the ScanSnap Website for latest support information. 26: Recommended: 10.7.4 or later. 27: Recommended: 10.6.8 or later. 28: Scanning speeds may drop if recommended CPU, memory capacity and USB 1.1 requirements are not met. 29: ScanSnap operates on both USB 2.0 and USB 3.0 without any difference in performance. 30: Some computers do not recognize the ScanSnap when it is connected to a USB 3.0 port. In this case, please use a USB 2.0 port. \* System requirements may change depending on the duration of support and the support policy of the companies that make the software listed in the table above.

Rack2-Filer Smart V1.0 / Magic Desktop V1.0 <sup>31, 32, 33</sup> System Requirements (Bundled with ScanSnap iX500 Deluxe only)					
Compatible operating systems		Windows® 8 (32-bit / 64-bit) <sup>34</sup>	Windows® 7 (32-bit / 64-bit) <sup>35</sup>	Windows Vista® (32-bit / 64-bit) <sup>36</sup>	Windows® XP (32-bit) <sup>37</sup>
Hardware Requirements	CPU	Intel® Pentium® 4 1.8 GHz or higher (Recommended: Intel® Core™ 2 Duo 2.2 GHz or higher)			
	Memory capacity	2 GB or more (Recommended: 4 GB or more)			
	Display	1,024 x 768 pixels or higher			
	Disk Capacity	System drive <sup>38</sup>	—	64-bit: 2 GB or more	—
			—	32-bit: 850 MB or more	
	Installation drive	1GB or more disc space* for each software <small>*Additional space is required for the data created by Rack2-Filer Smart and Magic Desktop</small>			
Supported scanners		ScanSnap iX500, S1500, S1500M, S1300i, S1300, S1100			
Supported mobile devices	Model	iPad series, iPhone series (4 or later), iPod touch series (4th generation or later)			
	OS	iOS 4.3 or later			
	Application	Rack2-Filer Smart for iOS1.1.0 or later			

31: This product only supports Microsoft<sup>®</sup> Windows<sup>®</sup>. 32: Please refer to the Rack2-Filer Smart Website and the Magic Desktop Website. 33: When installing Magic Desktop, Internet connection is required. 34: Rack2-Filer Smart and Magic Desktop runs as a desktop application. 35: For use with Service pack 1 or higher. 36: For use with Service pack 2 or higher. 37: For use with Service pack 3 or higher. 38: This is the free capacity required when .NET Framework 4 is not installed.

Options		
Description	Model Number	Remarks
ScanSnap Carrier Sheets <sup>39</sup>	PA03360-0013	5 Carrier Sheets Intended for ScanSnap iX500, S1500, S1500M, S510, S510M, S500 and S500M
ScanSnap Bag	PA03951-0651	Intended for ScanSnap iX500, S1500, S1500M, S510, S510M, S500 and S500M

39: Although ScanSnap Carrier Sheets have a listed lifespan of 500 scans, the lifespan may vary with usage. ScanSnap Carrier sheets are intended to scan paper documents with weights of 127 g/m<sup>2</sup> or less. They also support the scanning of folded documents that are as large as 216 x 297 mm. This scanner is designed to digitize materials that can be reproduced lawfully, in accordance with applicable copyright regulations and other laws. ScanSnap users are responsible for how they use this scanner. It is imperative that ScanSnap users comply with all applicable local rules and laws, including, without limitation, copyright laws when using this scanner.