

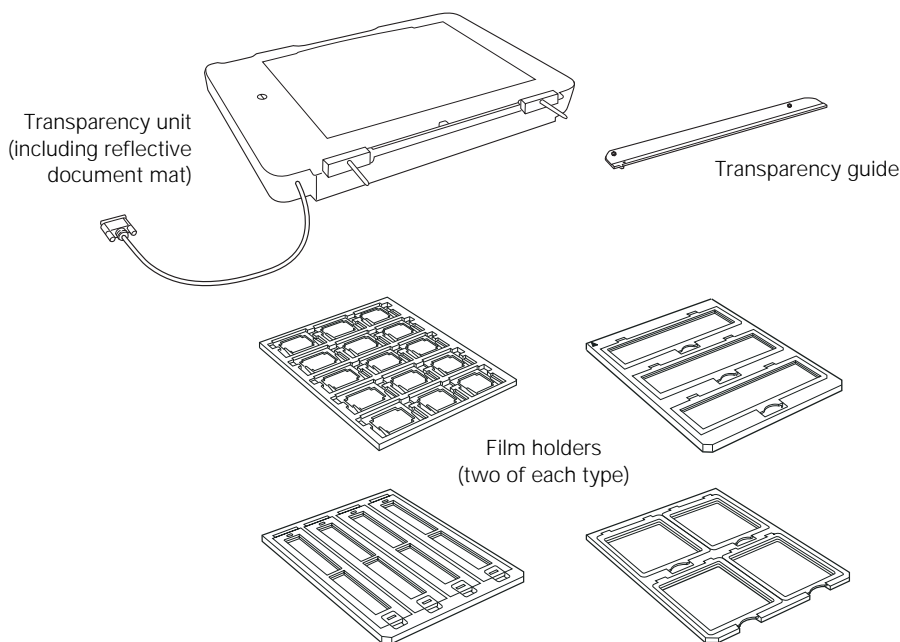
Transparency Unit

The transparency unit (B12B813362) lets you scan transparent materials—35 mm slides, filmstrips, and negatives, 4 × 5 inch film, medium format (120/220) film, and nonstandard film sizes up to 12.2 × 16.5 inches (309 × 420 mm). To switch from scanning transparent materials to ordinary paper documents, see page 52.

Note: The transparency unit is optional for the GA version of the Expression 10000XL. It is included with the Photo version.

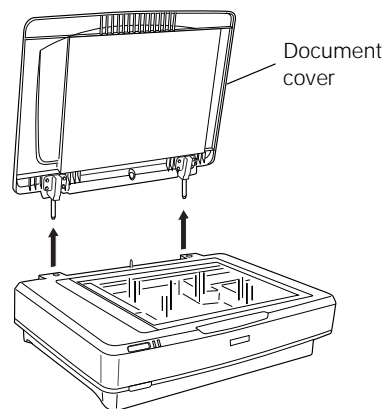
Unpacking the Transparency Unit

Make sure that all of the following items are included in the transparency unit box. If any items are missing or damaged, contact your Epson dealer, or contact Epson at (562) 276-4382 (in the United States) or (905) 709-3839 (in Canada). Keep all the packing materials so you can use them for storage when you are not scanning transparencies.

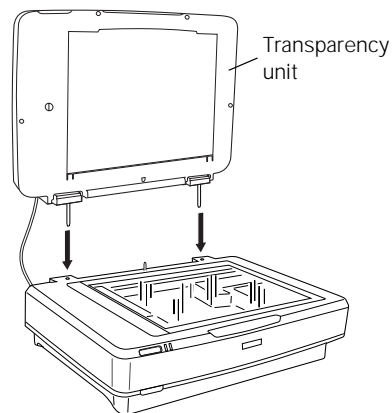


Installing the Transparency Unit

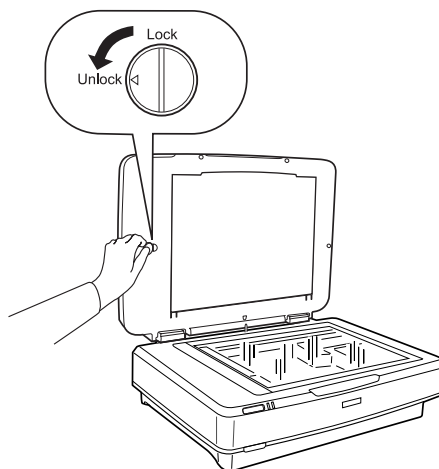
1. Make sure the scanner is turned off, then unplug the power cord from the scanner.
2. Fully open the scanner's document cover, then lift it straight up.



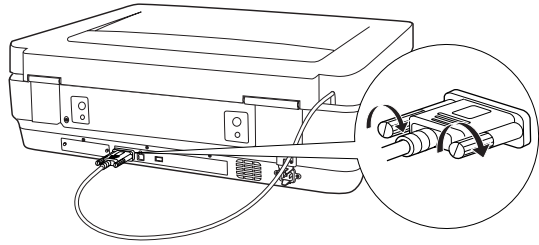
3. Lower the transparency unit onto the scanner, so that the pins fit into the holes as shown.



4. Use a coin to turn the transportation lock to the Unlock position.



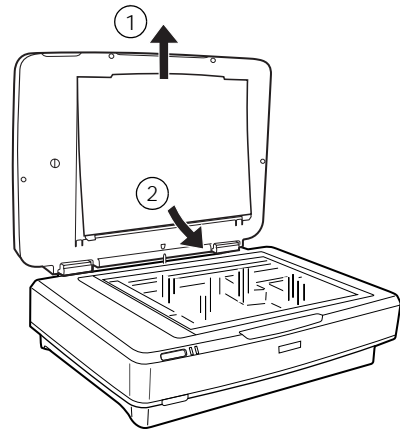
5. Close the transparency unit.
6. Connect the transparency unit cable to the scanner's OPTION port, then tighten its screws.



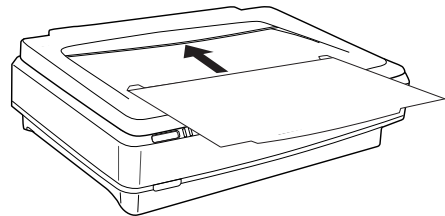
Using the Transparency Unit

Before using the transparency unit (TPU), you need to remove the reflective document mat and make sure the glass on both the document table and the TPU is clean.

1. Open the transparency unit.
2. Grasp the white reflective document mat by its top edge and slide it upward to free the bottom edge of the mat.
3. Lower the mat slightly to free the tabs at the top edge, then remove the mat.

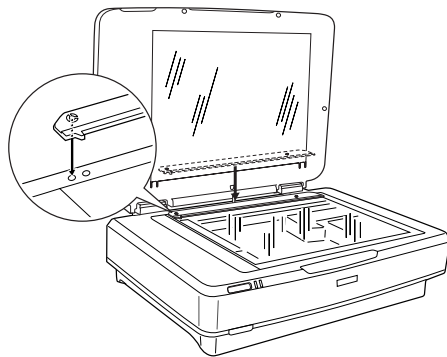


4. Place the mat in the storage pocket located on top of the TPU.
5. Make sure the glass on the scanner's document table and on the TPU is completely clean and free of dust. If necessary, use a soft cloth to wipe it clean.



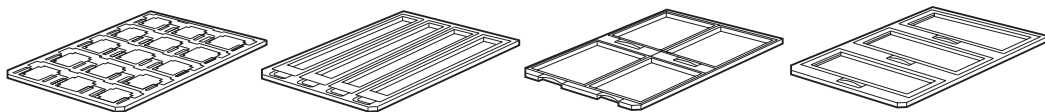
Caution: Never spray glass cleaner directly on the document table. Always spray it on a cloth first and then wipe the glass.

6. Place the transparency guide at the back edge of the document glass, so that its alignment pins fit into the holes as shown.

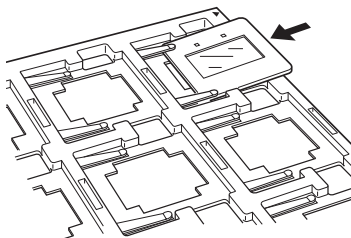


Placing Standard Film Sizes on the Scanner

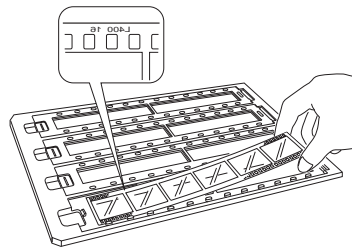
Use the film holders that came with the transparency unit to scan 35 mm slides, filmstrips, and negatives, 4 × 5 inch film, and medium format (120/220) film.



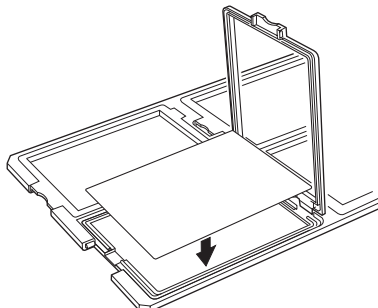
1. Place the film holder on a flat surface. Open its cover (if it has one), then load the film with its shiny side face down and the film emulsion layer face up.



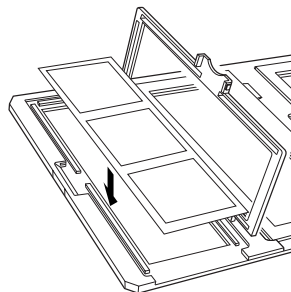
35 mm slides



35 mm strips



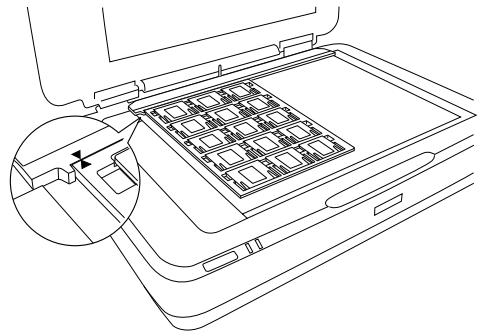
4 × 5 inch film



Medium format film

2. Make sure the transparency guide is in place at the back edge of the document glass (see page 47). Then place the film holder on the document glass, aligning the arrow marks as shown.

When scanning large numbers of images, you can place a second film holder on the scanner next to the first one. The holders can be for different sizes of film (unless you plan to scan 35 mm slides using the Thumbnail preview screen; see page 50).



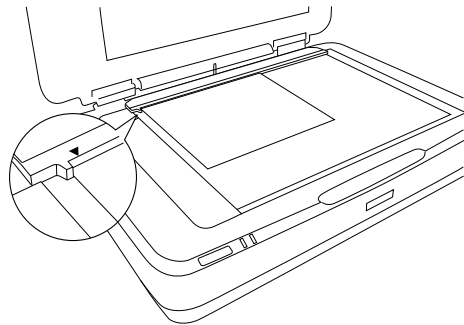
3. Close the transparency unit and scan as described on page 49.

Note: If the transparency unit is not closed, you will get an error message and be unable to scan.

Placing Nonstandard Film Sizes on the Scanner

You can scan film in nonstandard sizes up to 12.2 × 16.5 inches (309 × 420 mm). Follow these guidelines:

1. Make sure the transparency guide is in place at the back edge of the document glass (see page 47).
2. Set your film directly on the document glass, with the shiny side face down and the film emulsion layer face up. Align the film with the edge of the transparency guide, as shown.
3. Close the transparency unit and scan as described in the next section.



Note: When setting film directly on the glass or using film holders other than those that came with the scanner, be sure to adjust the focus (see page 50).

Scanning Your Film

You can scan your film in either Home Mode or Professional Mode. For greater control over your scanned images, choose Professional Mode.

Note: Be sure to select the correct Document Type (in Home Mode) or Film Type (in Professional Mode): Positive Film, Color Negative Film, or B&W Negative Film.

Also, be sure to adjust the focus if you're placing your film directly on the glass (instead of in a holder) or are using film holders other than those that came with the scanner. See page 50.

If you're using Professional Mode, follow these steps:

1. Open your imaging application, then choose the Import (or Acquire) option in the application and select Epson Expression 10000XL.

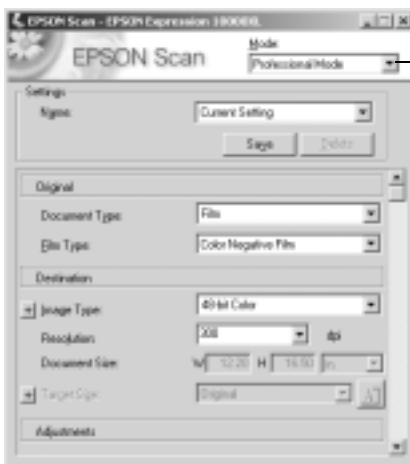
Note: If you are using Windows XP and choose WIA-EPSON Expression 10000XL, certain features won't be available.

The EPSON Scan dialog box opens.

2. Select Professional Mode from the selection box at the top of the screen.

Note: You may have to scroll down to see all of the settings.

3. Under the Original settings, select Film as your Document Type, and then select the correct Film Type (Positive Film, Color Negative Film, or B&W Negative Film).



Select Professional Mode

Scroll down to see more options

4. Under the Destination settings, choose a color depth from the Image Type menu:

- 48-bit Color for the highest quality color scans


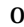
Note: If you choose this option, make sure your application supports 48-bit image files (Photoshop Elements does not support 48-bit color). This option significantly increases your file size.

- 24-bit Color for high quality color scans

- Color Smoothing to reduce color variations without lessening sharpness
- 16-bit Grayscale for the highest quality scans of black-and-white photos or images

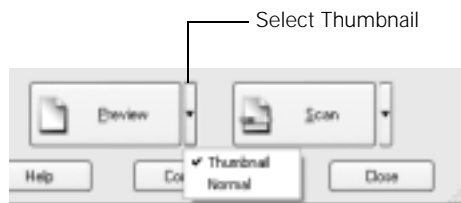
Note: Make sure your application supports 16-bit grayscale.

- 8-bit Grayscale for high quality scans of black-and-white photos or images



Click  (Windows) or  (Macintosh) to see more options, then choose Best or Draft for the Scanning Quality.

5. Choose a resolution setting (50 to 12800 dpi). See page 30 for guidelines.

6. If you're scanning 35 mm slides, you can click the arrow next to the Preview button and select Thumbnail as the type of preview screen you want to use. This locates each image automatically, speeding up your workflow (see page 38).



For all other types of film, make sure Normal is selected.

7. Click the Preview button to see previews of your images.
8. Click and drag within each image to select just the area you want to scan. For best results, avoid including borders in your image. This enables EPSON Scan to apply the optimal exposure and color balance settings (see page 31).
9. If you're not using the film holders that came with your TPU, you'll have to reset the focus. Click the All button (to select all the images) or click a specific image to adjust, and then do one of the following:
- If you've placed your film directly on the document glass, click the  Manual focus button on the preview screen, set the focus position to 0.0, and then click OK.
 - If you're using a non-Epson film holder, manually adjust the focus to the position specified for your holder, or click the  Auto focus button to adjust the focus position automatically.

10. Use these Adjustment settings (on the main screen) to modify your images as necessary.



Auto Adjust – If you've turned off Continuous auto exposure, click this button to apply your color management settings and have the software determine the best exposure and color balance for your scan. (If Continuous auto exposure is turned on, clicking this button has no effect; see page 31.)



Histogram Adjustment – Click this button to adjust the highlight, shadow, and gamma input levels.



Tone Correction – Click this button to choose a preset tone curve for specific effects or to change the tone curve manually.

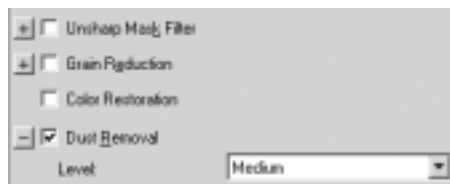


Image Adjustment – Click this button to adjust the color balance, saturation, brightness, and contrast settings.

For any of these settings, you can click Reset to go back to the default settings for an image. Click the Help for more information about using these options.

11. To enhance the appearance of your images, select from the following options:

- To sharpen an image, select Unsharp Mask Filter.
- To reduce the appearance of graininess in your film, select Grain Reduction.
- To correct the color on faded photos, select Color Restoration.
- To digitally remove unwanted specks of dust, select Dust Removal.



Click (Windows) or (Macintosh) next to each setting and then choose a Level to increase or decrease the effect. For more information about these options, see page 33.

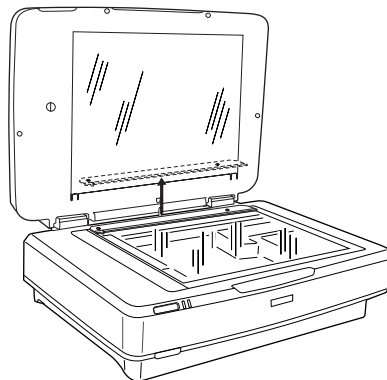
12. Click Scan.

13. When scanning completes, click Close to exit EPSON Scan and view the scanned images in your imaging application.

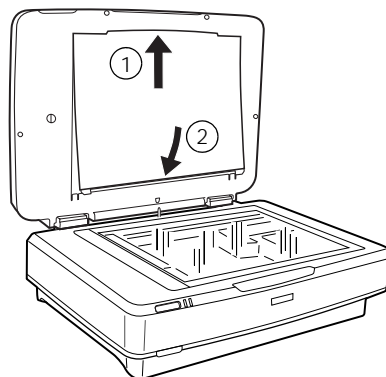
Scanning Paper Documents

If you want to scan an ordinary paper document while leaving the transparency unit installed, follow these steps.

1. Remove the transparency guide.



2. Insert the reflective document mat, top edge first, being careful to keep the mat's white surface from getting caught under the frame of the TPU.
3. Insert the tabs along the bottom edge of the mat to hold it in place.
4. Scan your document, following the instructions in Chapter 1 for the mode that you're using.



Note: If you're scanning in Professional Mode, be sure to select **Reflective** as your Document Type.