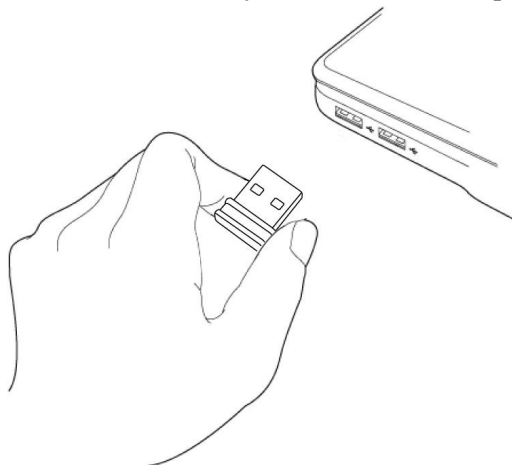


How to install Edimax wireless adapter in Windows 7 or in Windows Vista

This instruction can be applied on EW-7811Un, EW-7822UAC, EW-7722UTn v2.0, and EW-7622UMn. These adapters provide driver files and users do not need to run the executable file.

Section A: Plug in the USB Wireless Adapter to your computer

Insert the USB wireless network card into an empty USB port of your computer when computer is switched on. Never use force to insert the card, if you feel it's stuck, flip the card over and try again.



Section B: Install Driver automatically

Once the network adapter is plugged in, a **Found New Hardware** window will pop-up.

If your Windows 7 / Windows Vista has been connected to Internet by Ethernet cable or by another Wi-Fi adapter, it will search the driver from Internet and load the driver automatically for Edimax Wireless Adapters.

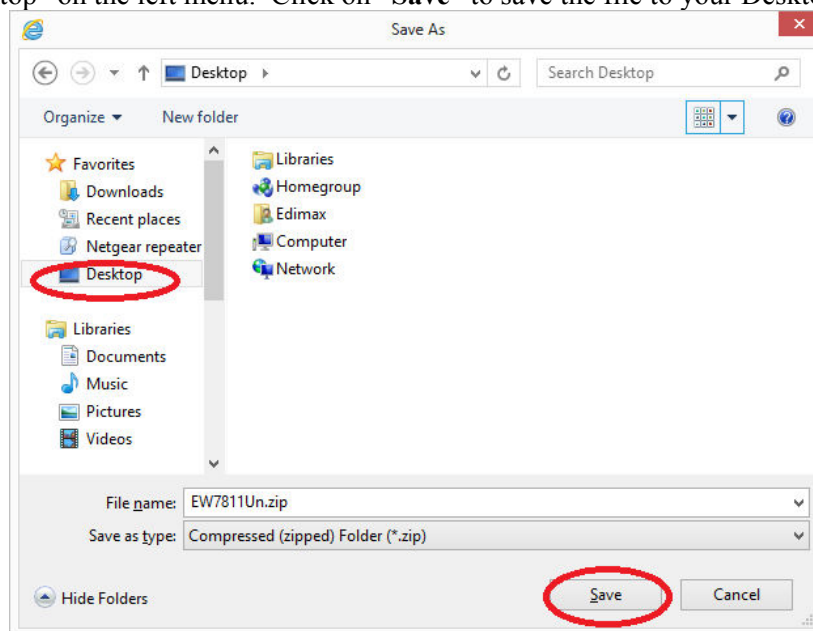
If your computer does not have Internet or it fails to load the driver automatically, Click on Cancel button. Continue next section to install the driver manually.

Section C: Download the latest driver from Edimax USA site

1. Visit <http://us.edimax.com>. Click on “**Download**” on the left menu. Find the model number. Right click on the Driver link. Select “Save Link as” or “Save Target as”.

A screenshot of the Edimax USA website. The left sidebar contains a menu with 'Download' circled in red and labeled '1.'. The main content area is titled 'Driver & Manual Download' and contains a table of products and their drivers. The 'Driver' column is circled in red. A context menu is open over the 'Driver' link for the 'EW-7811Un' product, and the 'Save as' option is circled in red and labeled '3.'. The context menu also shows 'Open' and 'Save' options. The 'Save as' option is selected, and a file name 'EW7811Un.zip' is shown. The file size is 5.45 MB. The source is 'www.edimax.us'.

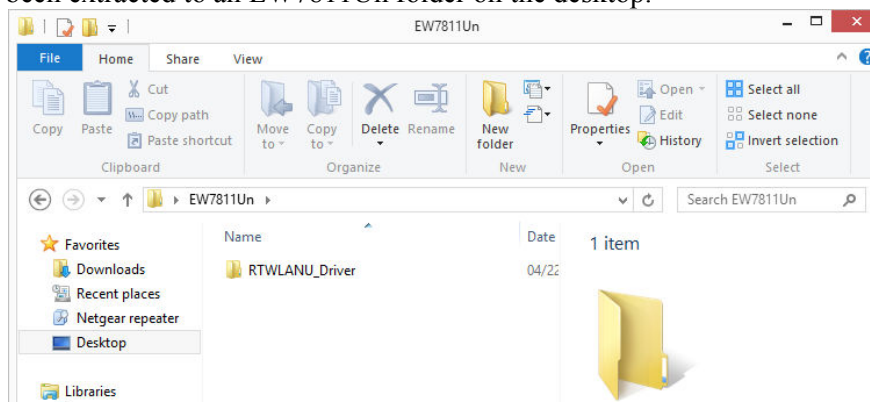
2. Choose “Desktop” on the left menu. Click on “Save” to save the file to your Desktop.



3. In a few seconds, the download is completed. You should have the file on our Desktop screen.

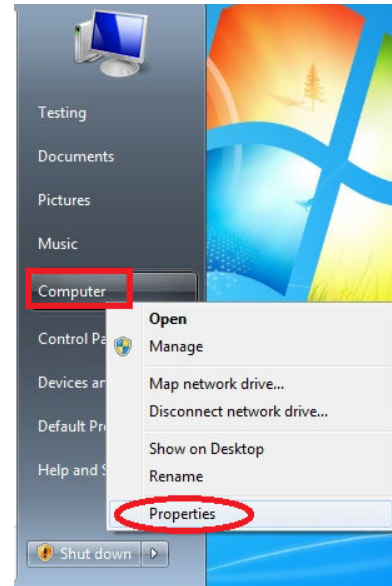
4. Right click on the downloaded file. Click on “Extract All”.

5. The file has been extracted to an EW7811Un folder on the desktop.

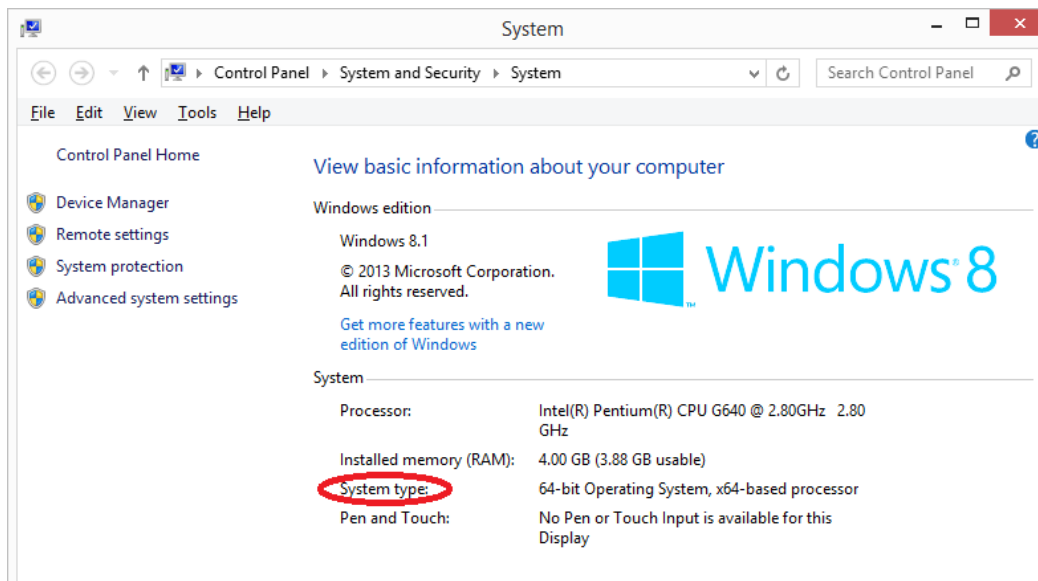


Section D: Manually Install Driver in Device Manager

1. Click on Start button. Right click on “Computer” then click on “Properties”.

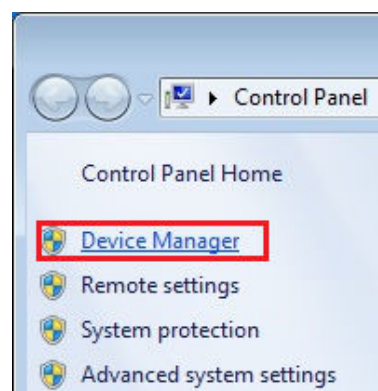


In System Properties, you will see your operating system like Windows 7, Windows 8, Windows Vista...etc.

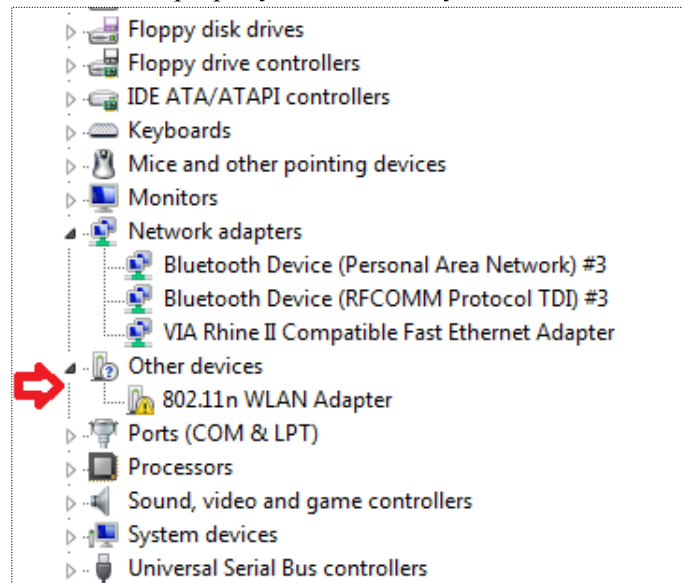


Verify the system type of your computer. You will need this information later. If you do not see such information, your computer should be 32bit.

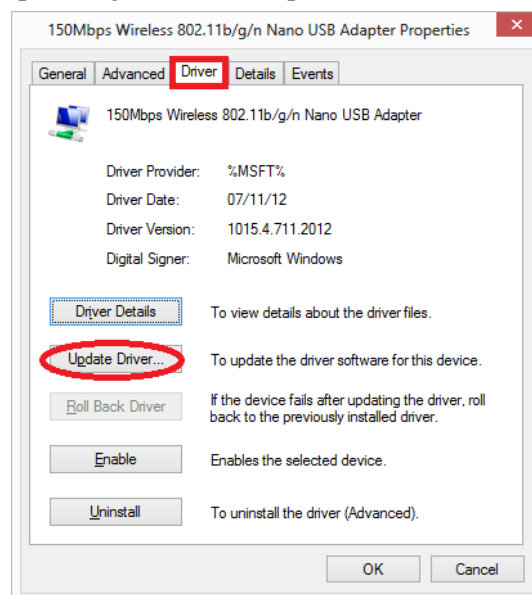
Click on “Device Manager” on the left menu.



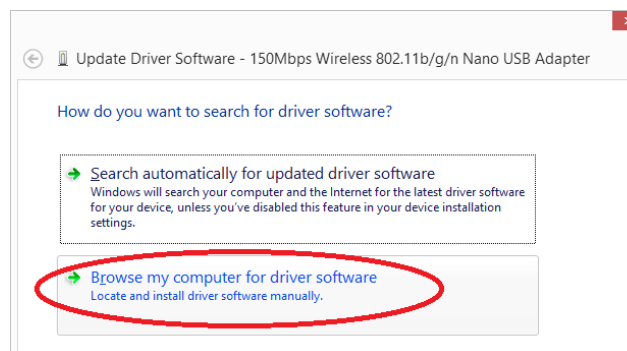
2. Inside Device Manager, expand the list of **Network Adapters** . If you see the wireless adapter is listed in **Network Adapters**, its driver could have been installed properly. However, if you see **802.11n WLAN Adapter** is listed under **Other Devices**, you will continue to install the driver manually.



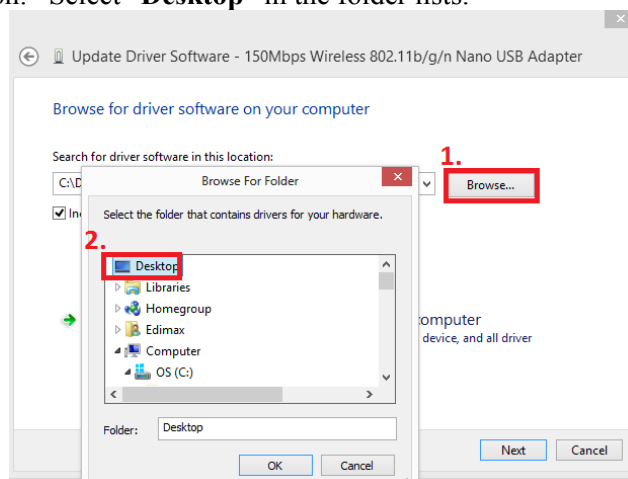
3. Double click on the **802.11n WLAN Adapter** to get into the Properties windows. Click on the **Driver** tab. Click on **Update Driver** button



4. Click on the second option “**Browse my computer for driver software**”.

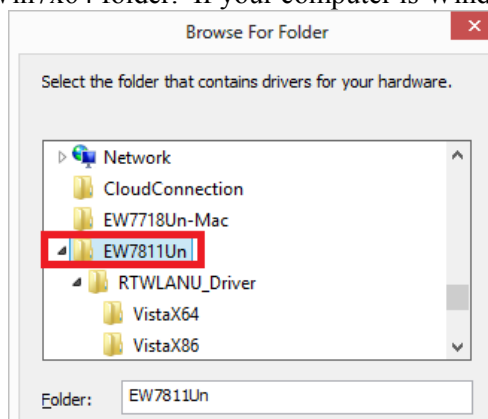


5. Click on **Browse** button. Select “**Desktop**” in the folder lists.

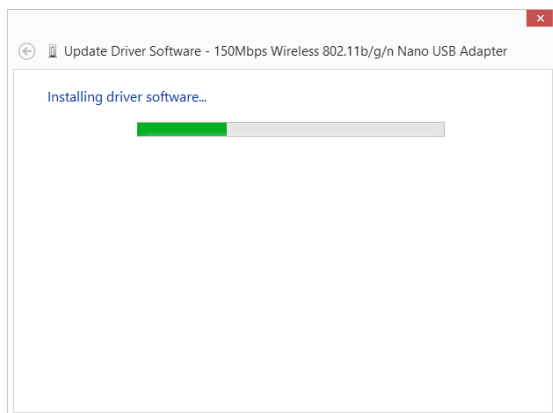


Scroll down and find the **EW7811Un** folder. Open the **/EW7811Un** folder. Open the **/RTWLANU_Driver** folder.

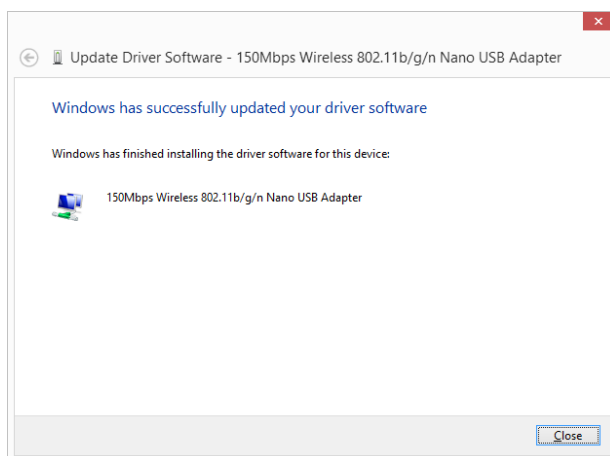
Now you need to open the correct folder for your Operating System. For example, if your computer is Windows 7 64bit, open **/Win7x64** folder. If your computer is Windows 7 32bit, open **/Win7x86** folder.



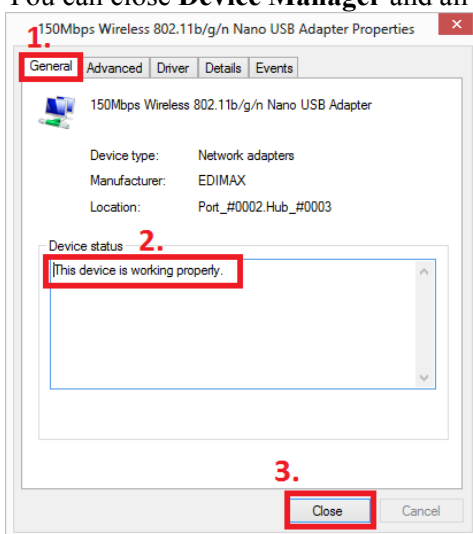
6. Click on OK or Open button. You will be back to the Wizard window.
7. Click on Next.
8. Windows is installing the driver.






9. In a few seconds, the driver will be installed successfully. Click on **Finish** or **Close**.



10. Click on General tab. The Device status indicates “the device is working properly”. Click on **Close**. The driver is installed properly. You can close **Device Manager** and all other windows.

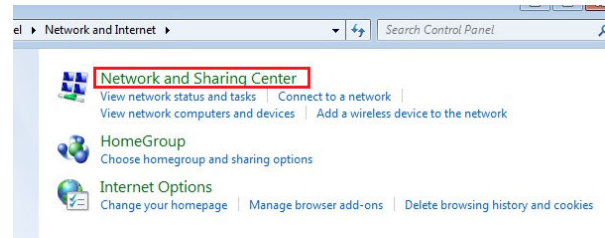


Section E: Connect Wi-Fi network in Windows 7/Vista

Left click mouse on ( ,  or ) in the system tray. You will see your Wi-Fi network and you can connect to it.



If you do not have such Wi-Fi icon in the system tray, go to Control Panel. Click on “Network and Internet”. Click on “Network and Sharing Center”.



Click on “Change Adapter Settings” on the left menu. Right click on “Wireless Network Connection”. Click on “Connect/Disconnect”. You will see your Wi-Fi network and you can connect to it.

