

Spare Parts List



Label Printer

A6+

Made in Germany

2 Spare parts list for the following products

2

Family	Type	
A+	A6+/200	A6+/200P
	A6+/300	A6+/300P

Edition: 02/2015 - Part No. 9008768

Copyright

This documentation as well as translation hereof are property of cab Produkttechnik GmbH & Co. KG.

The replication, conversion, duplication or divulgement of the whole manual or parts of it for other intentions than its original intended purpose - in particular the procurement of spare parts for products sold by cab – demand the previous written authorisation by cab.

Editor

Regarding questions or comments please contact
cab Produkttechnik GmbH & Co. KG.

Topicality

Due to the constant further development of our products discrepancies between documentation and product can occur.
Please check www.cab.de for the latest update.

Terms and conditions

Deliveries and performances are effected under the "General conditions of sale of cab"

Table of Contents

1	Chassis, Cover	3
2	Control Panel, Power Supply, PCB CPU	4
3	Printhead Assembly	5
4	Print Roller Assembly, Label Sensor	6
5	Main Drive, Roll Retainer	7
6	Transfer Ribbon Winders	8
7	Internal Rewinder	9
8	Spare Parts Register	10
9	Packaging/Accessories	12

Germany

cab Produkttechnik
GmbH & Co KG
Postfach 1904
D-76007 Karlsruhe
Wilhelm-Schickard-Str. 14
D-76131 Karlsruhe

Telefon +49 721 6626-0
Telefax +49 721 6626-249

www.cab.de
info@cab.de

France

cab technologies s.a.r.l.
F-67350 Niedermodern
Téléphone +33 388 722 501
www.cab.de/fr
info.fr@cab.de

USA

cab Technology Inc.
Tyngsboro MA, 01879
Phone +1 978 649 0293
www.cab.de/us
info.us@cab.de

Asia 亚洲

cab Technology Co., Ltd.
希愛比科技股份有限公司
Junghe, Taipei, Taiwan
Phone +886 2 8227 3966

www.cab.de/tw
info.asia@cab.de

China 中国

cab (Shanghai) Trading Co., Ltd.
锐博(上海)贸易有限公司
Phone +86 21 6236-3161

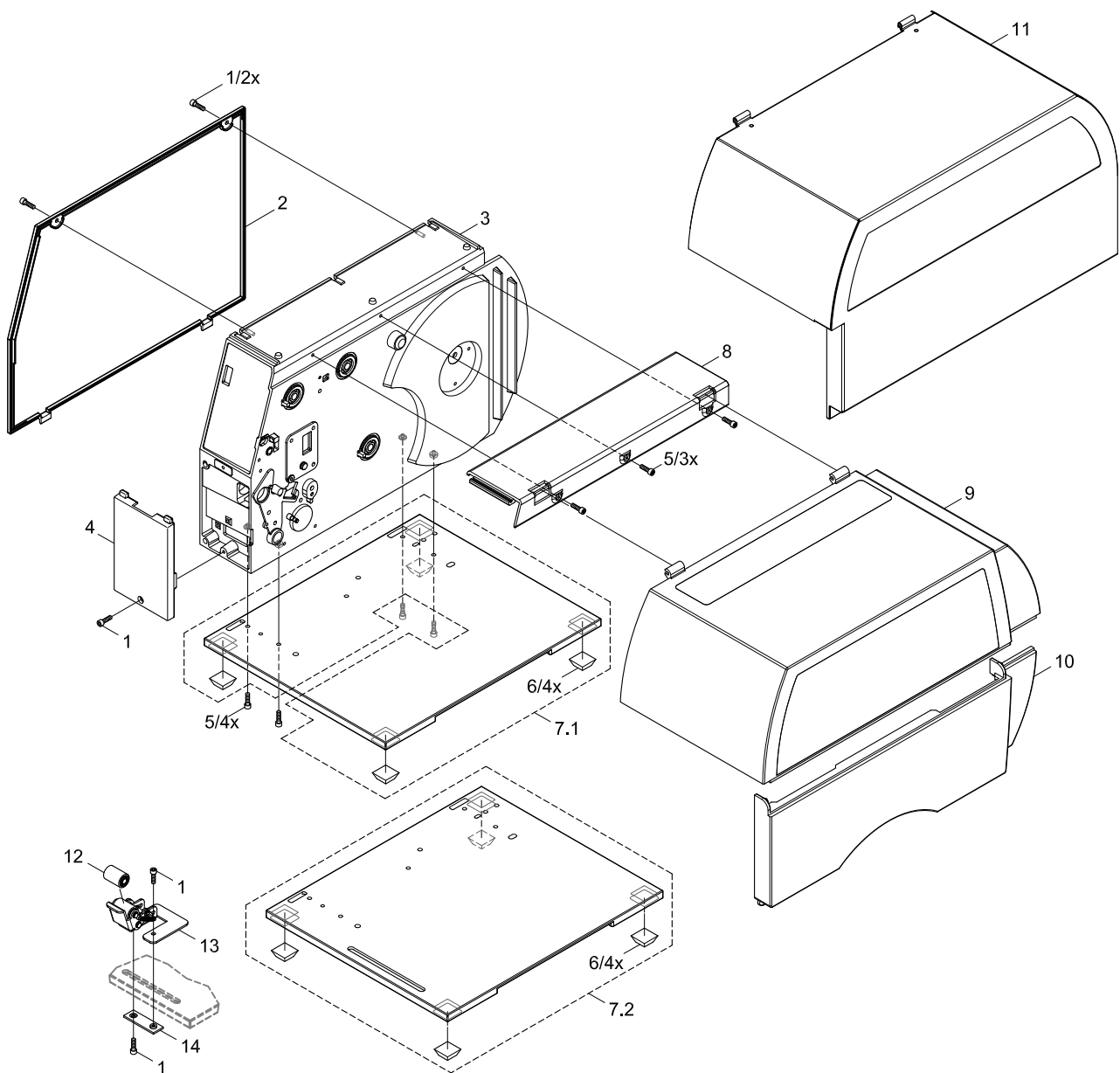
www.cab.de/cn
info.cn@cab.de

Representatives in other countries on request

No	Part No.	Description	PU	Note	Serial No.	
					from	to
1	5902241.001	Screw DIN7984-M4x10	10			
2	5954399.001	Cover Plate	1			
3.1	5954019.001	Chassis	1	a		
3.2	5958778.001	Chassis	1	b		
3.3	5958779.001	Chassis	1	c		
3.4	5953897.001	Chassis	1	d		
4	5943004.001	Cover	1	ac		
5	5902565.001	Screw DIN7984-M4x10	10			
6	5905652.001	Foot	1			

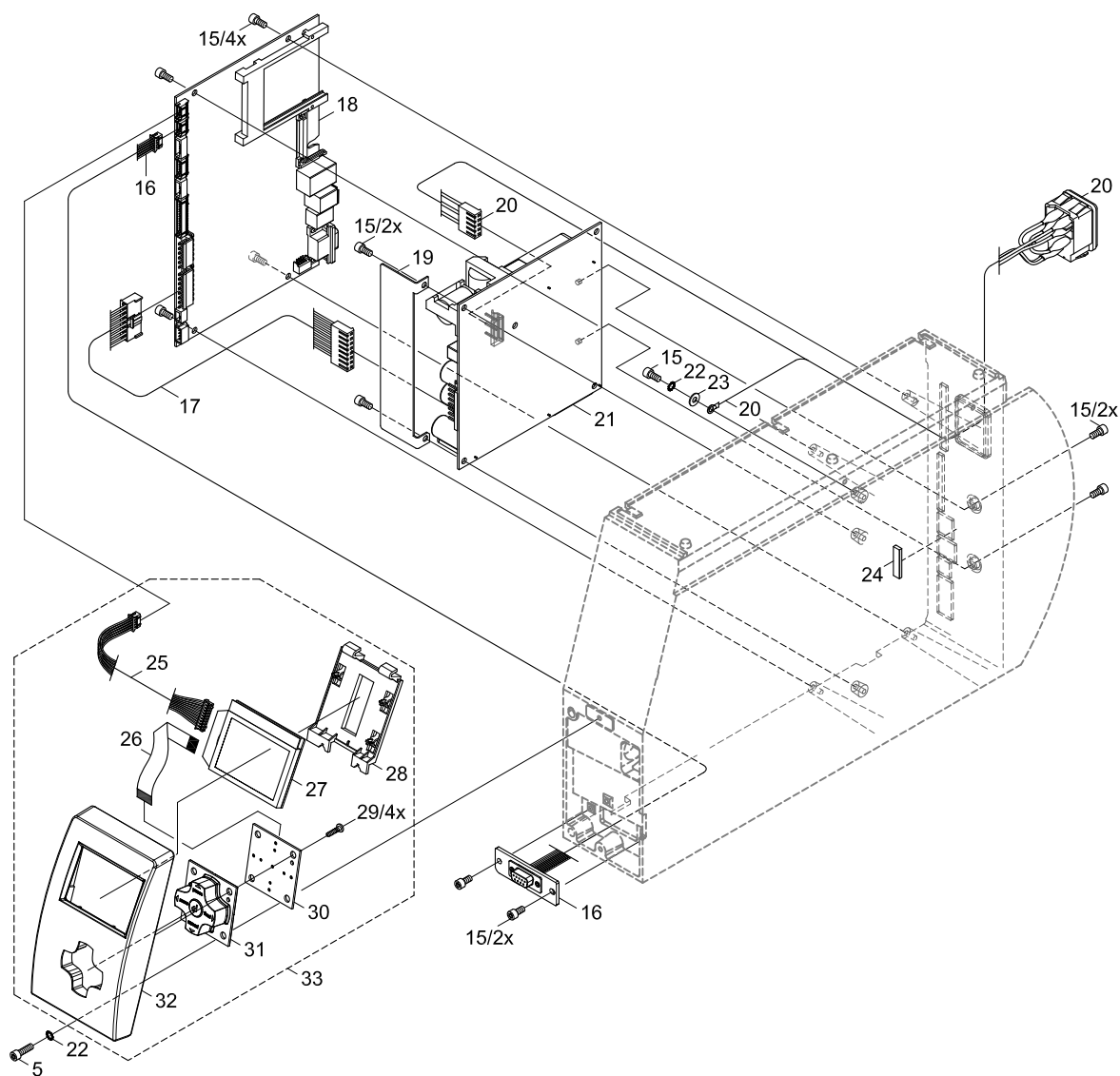
No	Part No.	Description	PU	Note	Serial No.	
					from	to
7.1	5943196.001	Baseplate	1	ac		
7.2	5946478.001	Baseplate	1	bd		
8	5943113.001	Cover	1			
9	5954016.001	Cover cab A6+	1			
10	5943007.001	Cover	1			
11	5954013.001	Metal Cover	1			
12	5946462.001	Pinch Roller	1	bd		
13	5946450.001	Locking System	1	bd		
14	5946480.001	Plate	1	bd		

Notes	a	A6+/...
	b	A6+/...P
	c	A6+/... Direct Thermal
	d	A6+/...P Direct Thermal



No	Part No.	Description	PU	Note	Serial No.	
					from	to
5	5902565.001	Screw DIN7984-M4x10	10			
15	5902571.001	Screw DIN7984-M4x6	10			
16	5954095.001	Cable Periphery	1			
17	5943107.001	Cable Power Supply	1			
18	5551118.001	CPU X2	1			
19	5954179.001	Cover Plate	1			
20	5955046.001	Power Input Module	1			
21	5956220.001	Power Supply	1			
22	5903011.001	Toothed Washer DIN6797-A4.3	10			
23	5903003.001	Washer DIN125-A4.3	10			

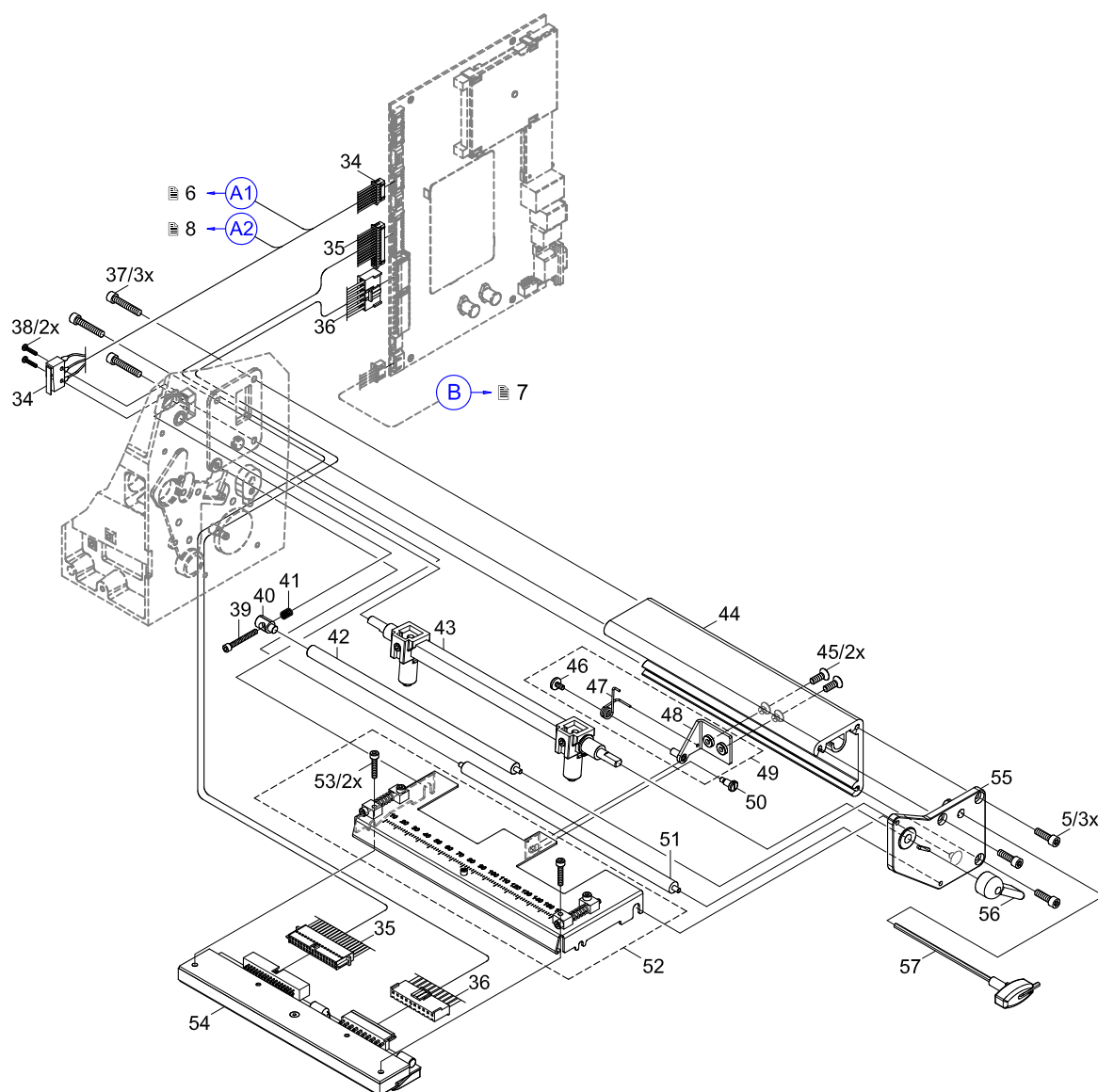
No	Part No.	Description	PU	Note	Serial No.	
					from	to
24	5954132.001	Strip	5			
25	5954097.001	Cable Control Panel	1			
26	5954027.001	Cable Control Panel	1			
27	5540868.001	LCD Display	1			
28	5954026.001	Holder	1			
29	5902414.001	Screw EJOPT-K30x12	10			
30	5955034.001	PCB Navi Button	1			
31	5540930.001	Navigator Pad	1			
32	5954025.001	Control Panel Cover	1			
33	5954020.001	Control Panel	1			



No	Part No.	Description	PU	Note	Serial No.	
					from	to
5	5902565.001	Screw DIN7984-M4x10	10			
34	5954098.001	Cable Sensors	1			
35	5954259.001	Cable Printhead	1			
36	5954258.001	Cable Printhead	1			
37	5902572.001	Screw DIN7984-M4x16	10			
38	5902457.001	Screw DIN7985-M2x10	10			
39	5902011.001	Screw DIN912-M3x20	10			
40	5954060.001	Pivot Arm	1			
41	5906136.001	Spring	5			
42	5954243.001	Roller Ribbon	1			
43	5954240.001	Printhead Locking System	1			
44	5954216.001	Profile	1			
45	5902573.001	Screw DIN7991-M4x8	10			

No	Part No.	Description	PU	Note	Serial No.	
					from	to
46	5902823.001	Screw DIN921-M3x6	10			
47	5954239.001	Spring	1			
48	5954134.001	Bracket	1			
49	5954261.001	Bracket	1			
50	5902145.001	Screw DIN923-M3x6	10			
51	5954242.001	Roller	1			
52	5954231.001	Printhead Mounting Bracket	1			
53	5902474.001	Screw DIN912-M3x16	10			
54.1	5954217.001	Printhead 6/200	1	e		
54.2	5954106.001	Printhead 6/300	1	f		
55	5959742.001	Side Plate	1			
56	5954059.001	Lever	1			
57	5946113.001	Allen Key	1			

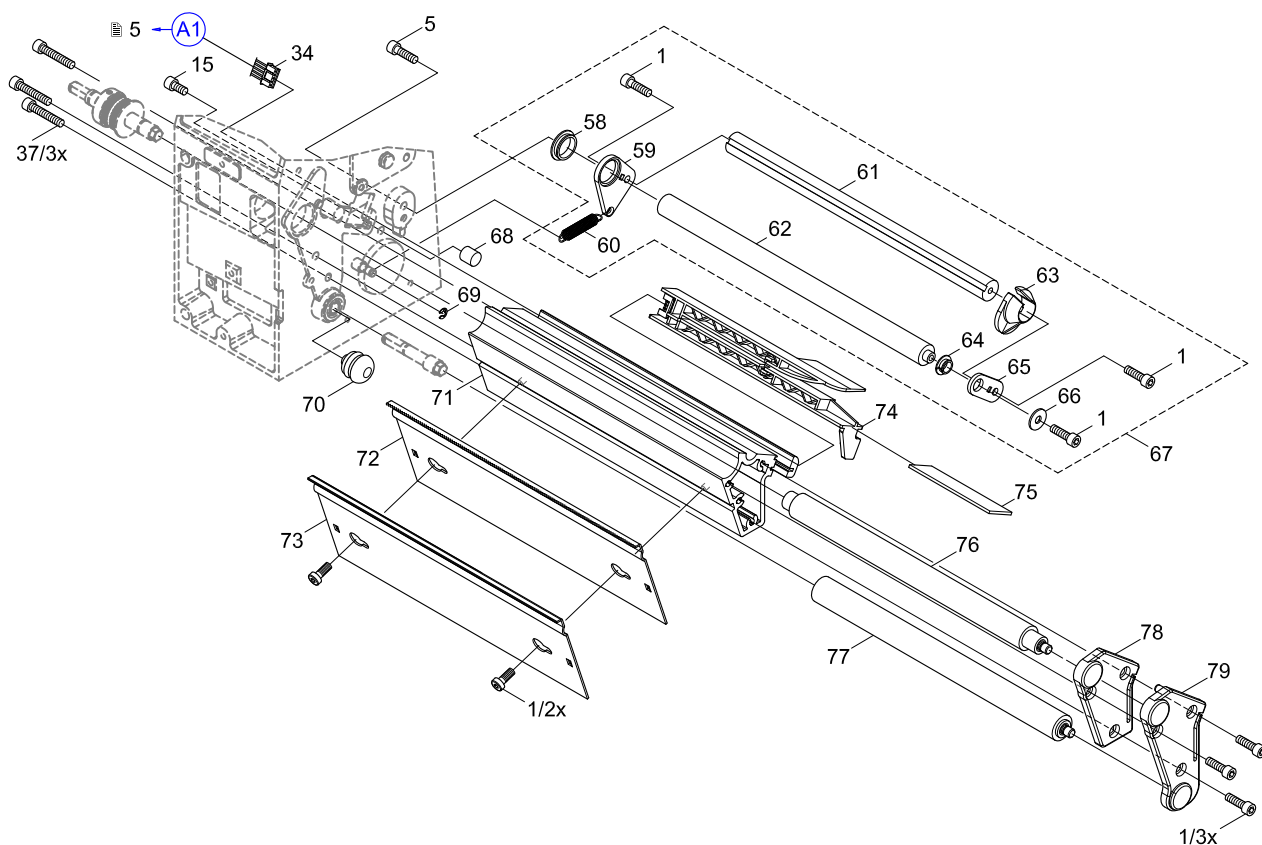
Notes	e	A6+/200 (P)
	f	A6+/300 (P)



No	Part No.	Description	PU	Note	Serial No.	
					from	to
1	5902241.001	Screw DIN7984-M4x10	10			
5	5902565.001	Screw DIN7984-M4x10	10			
15	5902571.001	Screw DIN7984-M4x6	10			
34	5954098.001	Cable Sensors	1			
37	5902572.001	Screw DIN7984-M4x16	10			
58	5901026.001	Plastic Bushing	1			
59	5946570.001	Bearing Plate	1			
60	5906112.001	Spring	1			
61	5946576.001	Axle	1			
62	5946575.001	Axle	1			
63	5943025.001	Media Guide Ring	1			
64	5901036.001	Plastic Bushing	1			
65	5946571.001	Bearing Plate	1			
66	5903005.001	Washer DIN9021-4.3	10			

No	Part No.	Description	PU	Note	Serial No.	
					from	to
67	5946581.001	Swing	1			
68	5905885.001	Stopper M4x10	1			
69	5903507.001	E-Ring DIN6799-3.2	10			
70	5905866.001	Stopper 16x0.8	1	ac		
71	5954244.001	Profile	1			
72	5946414.001	Tear-off Plate TP6	1	ac		
73	5946413.001	Dispense Plate DP6	1	bd		
74	5954090.001	Label Sensor	1			
75	5943225.001	Strip	1			
76	5954245.001	Drive Roller DR6	1			
77	5954246.001	Roller RR6	1	bd		
78	5958711.001	Side Plate	1	ac		
79	5958713.001	Side Plate	1	bd		

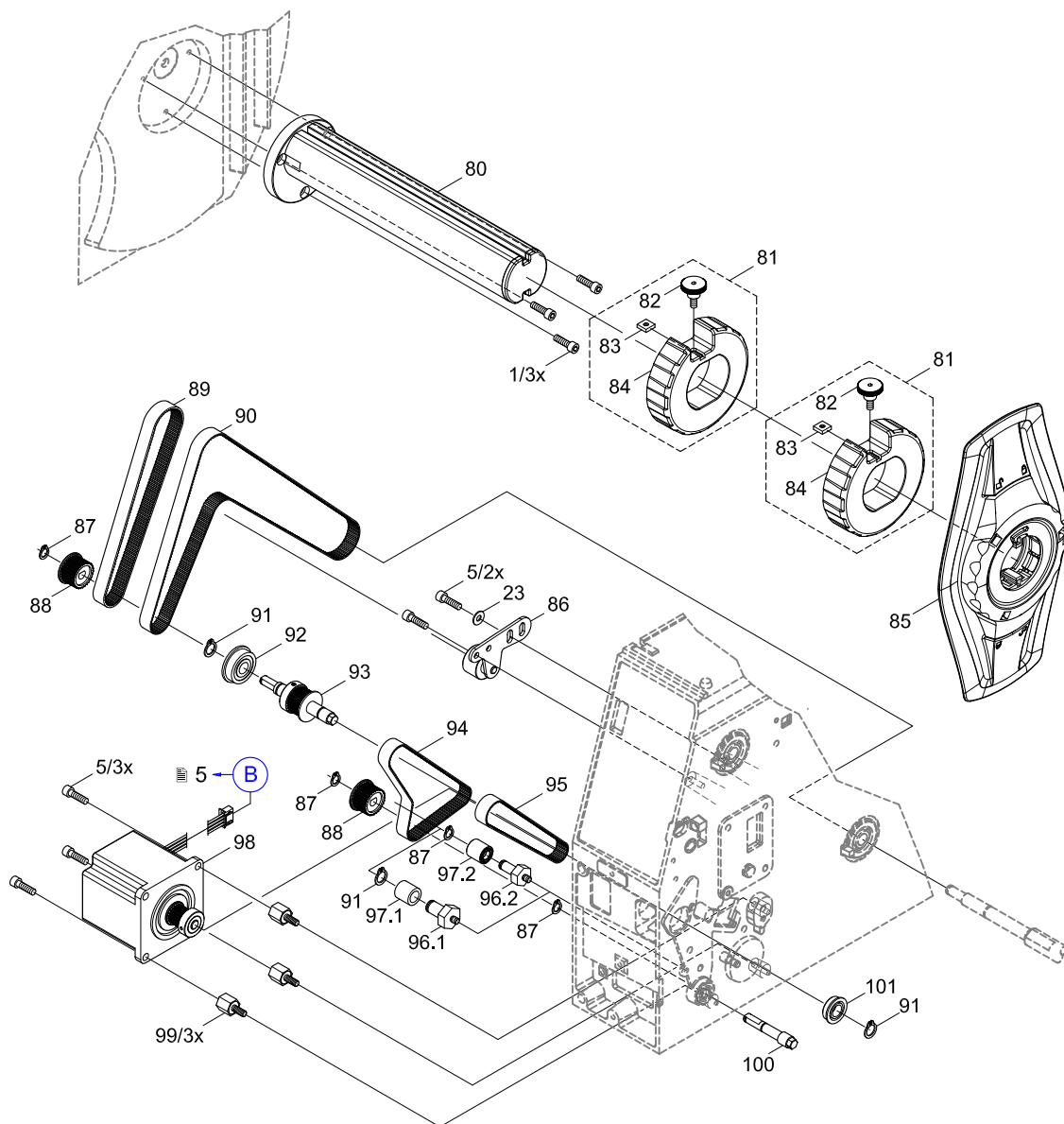
Notes	a	A6+...
	b	A6+...P
	c	A6+... Direct Thermal
	d	A6+...P Direct Thermal



No	Part No.	Description	PU	Note	Serial No.	
					from	to
1	5902241.001	Screw DIN7984-M4x10	10			
5	5902565.001	Screw DIN7984-M4x10	10			
23	5903003.001	Washer DIN125-A4.3	10			
80	5959807.001	Media Hub	1			
81	5959612.001	Adapter 75 mm Ø	1			
82	5959624.001	Knurled Screw	1			
83	8910053.001	Square Nut M4 8mm	10			
84	5959611.001	Adapter 75 mm Ø	1			
85	5959937.001	Margin Stop	1			
86	5954160.001	Belt Tension Bracket	1			
87	5903521.001	Snap Ring DIN471-A6	10			
88	5946238.001	Gear 29	1			
89	5905196.001	Belt 150MXL 037	1	ac		
90	5906135.001	Belt 300MXL 037	1	bd		

No	Part No.	Description	PU	Note	Serial No.	
					from	to
91	5903516.001	Snap Ring DIN471-8x0.8	10			
92	5901090.001	Ball Bearing DIN625-F608-ZZ	1			
93	5954182.001	Shaft	1			
94	5905857.001	Belt 120MXL 037	1	bd		
95	5905649.001	Belt 106MXL 037	1	ac		
96.1	5954185.001	Bolt	1	bd		139908
96.2	5954158.001	Bolt	1	bd	139909	
97.1	5901034.001	Bushing	1	bd		139908
97.2	5954157.001	Roller	1	bd	139909	
98	5946206.001	Stepper Motor	1			
99.1	5906157.001	Shock Absorber	5	ac		
99.2	5949727.001	Distance Bolt M4x10	1	bd		
100	5954184.001	Shaft	1	bd		
101	5901071.001	Ball Bearing DIN625-F688-ZZ	1			

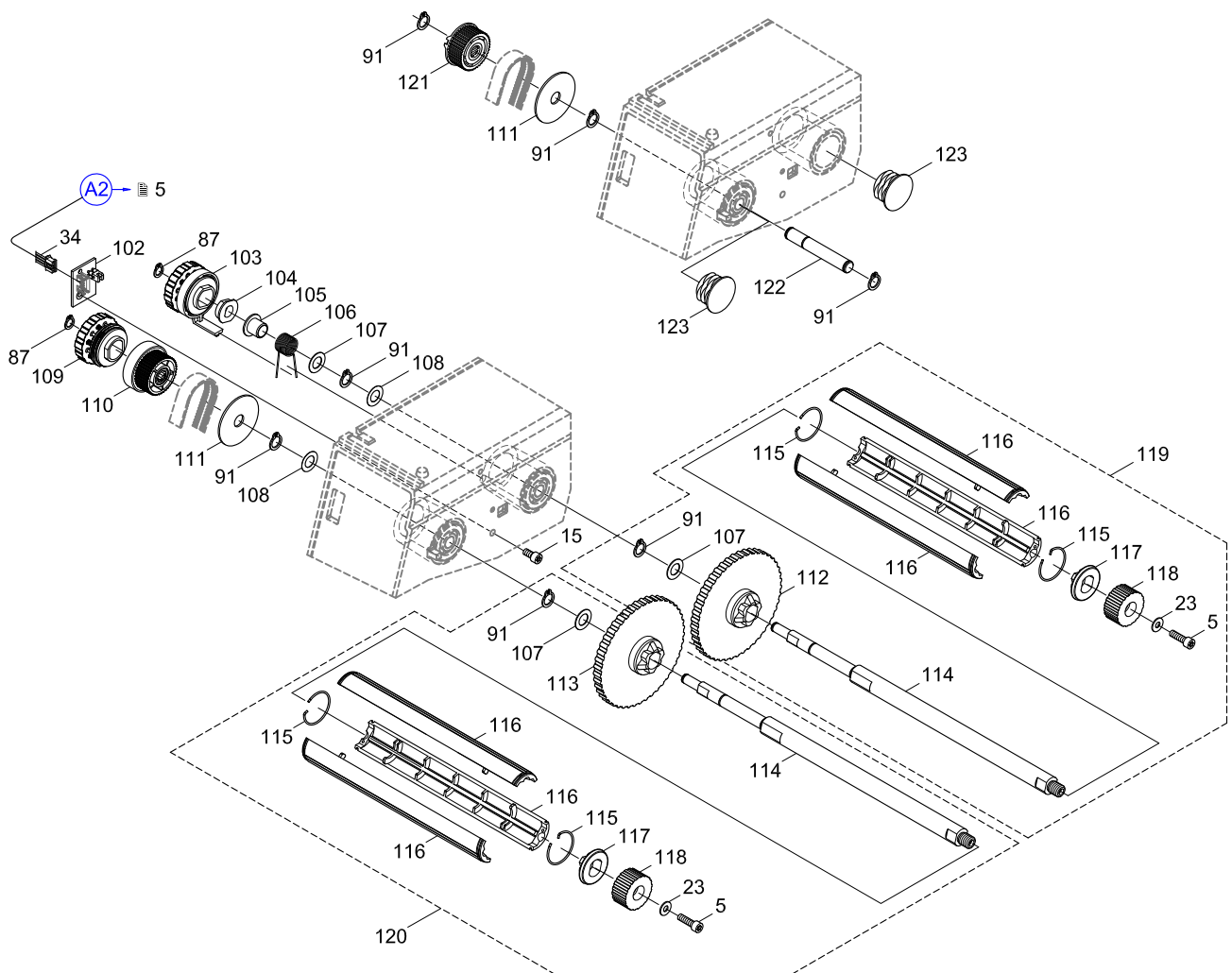
Notes	a	A6+...
	b	A6+...P
	c	A6+... Direct Thermal
	d	A6+...P Direct Thermal



No	Part No.	Description	PU	Note	Serial No.	
					from	to
5	5902565.001	Screw DIN7984-M4x10	10			
15	5902571.001	Screw DIN7984-M4x6	10			
23	5903003.001	Washer DIN125-A4.3	10			
34	5954098.001	Cable Sensors	1			
87	5903521.001	Snap Ring DIN471-A6	10			
91	5903516.001	Snap Ring DIN471-8x0.8	10			
102.1	5954024.001	Ribbon Sensor	1	ab		
102.2	5954028.001	PCB Detection	1	cd		
103	5954114.001	Brake	1			
104	5541172.001	Pivot Arm	1			
105	5901123.001	Plastic Bushing	10			
106	5954131.001	Spring	5			
107	5903020.001	Washer DIN988-8x14x0.5	10			
108	5903038.001	Washer DIN988-8x14x0.2	10			
109	5954151.001	Slipping Clutch	1			

No	Part No.	Description	PU	Note	Serial No.	
					from	to
110	5954115.001	Gear 42	1			
111	5903128.001	Washer 35x8.4x1.25	10			
112	5954120.001	Wall Spacer	1			
113	5954112.001	Wall Spacer	1			
114	5954250.001	Axle	1			
115	5954124.001	Snap Ring	1			
116	5954221.001	Shell	3			
117	5954121.001	Cone	1			
118	5943022.001	Knurled Knob	1			
119	5954249.001	Ribbon Supply Hub	1			
120	5954248.001	Ribbon Takeup Hub	1			
121	5536569.001	Gear 42-08	1	d		
122	5954129.001	Axle	1	d		
123	5905699.001	Stopper 25x1	1	cd		

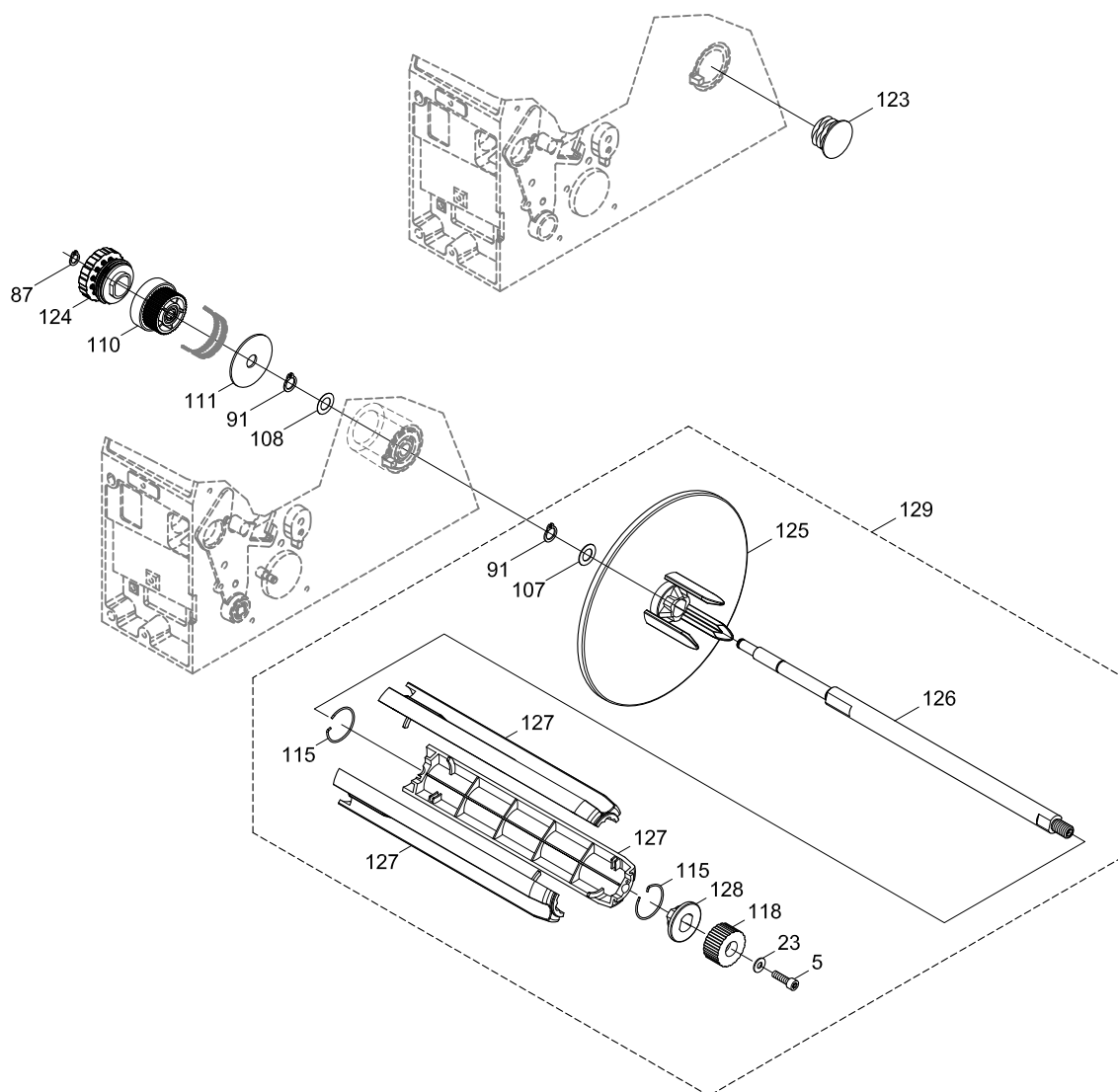
Notes	a	A6+/-...
	b	A6+/-...P
	c	A6+/-... Direct Thermal
	d	A6+/-...P Direct Thermal



No	Part No.	Description	PU	Note	Serial No.	
					from	to
5	5902565.001	Screw DIN7984-M4x10	10			
23	5903003.001	Washer DIN125-A4.3	10			
87	5903521.001	Snap Ring DIN471-A6	10			
91	5903516.001	Snap Ring DIN471-8x0.8	10			
107	5903020.001	Washer DIN988-8x14x0.5	10			
108	5903038.001	Washer DIN988-8x14x0.2	10			
110	5954115.001	Gear 42	1			
111	5903128.001	Washer 35x8.4x1.25	10			
115	5954124.001	Snap Ring	1			

No	Part No.	Description	PU	Note	Serial No.	
					from	to
118	5943022.001	Knurled Knob	1			
123	5905699.001	Stopper 25x1	1	ac		
124	5954146.001	Slipping Clutch	1			
125	5954145.001	Rewinder Wall Plate	1			
126	5954252.001	Shaft, Takeup	1			
127	5954253.001	Shell	3			
128	5954143.001	Cone	1			
129	5954251.001	Internal Rewinder	1			

Notes	a	A6+/-...
	b	A6+/-...P
	c	A6+/-... Direct Thermal
	d	A6+/-...P Direct Thermal



Pos.	Figure/Page							Nr.	Part No.	Description	PU	SPR				Notes	Serial No.	
																	from	to
1						8		121	5536569.001	Gear 42-08	1							
2			4					27	5540868.001	LCD Display	1			C	D			
3			4					31	5540930.001	Navigator Pad	1				D			
4						8		104	5541172.001	Pivot Arm	1							
5			4					18	5551118.001	CPU X2	1		B	C	D			
6				6				58	5901026.001	Plastic Bushing	1							
7					7			97.1	5901034.001	Bushing	1					bd		139908
8				6				64	5901036.001	Plastic Bushing	1							
9					7			101	5901071.001	Ball Bearing DIN625-F688-ZZ	1							
10					7			92	5901090.001	Ball Bearing DIN625-F608-ZZ	1							
11						8		105	5901123.001	Plastic Bushing	10				D			
12				5				39	5902011.001	Screw DIN912-M3x20	10							
13				5				50	5902145.001	Screw DIN923-M3x6	10							
14	3			6	7			1	5902241.001	Screw DIN7984-M4x10	10							
15			4					29	5902414.001	Screw EJOT-PT-K30x12	10							
16				5				38	5902457.001	Screw DIN7985-M2x10	10							
17				5				53	5902474.001	Screw DIN912-M3x16	10							
18	3	4	5	6	7	8	9	5	5902565.001	Screw DIN7984-M4x10	10							
19			4		6	8		15	5902571.001	Screw DIN7984-M4x6	10							
20				5	6			37	5902572.001	Screw DIN7984-M4x16	10							
21				5				45	5902573.001	Screw DIN7991-M4x8	10							
22				5				46	5902823.001	Screw DIN921-M3x6	10							
23			4			7	8	9	23	5903003.001	Washer DIN125-A4.3	10						
24					6			66	5903005.001	Washer DIN9021-4.3	10							
25			4					22	5903011.001	Toothed Washer DIN6797-A4.3	10							
26						8	9	107	5903020.001	Washer DIN988-8x14x0.5	10							
27						8	9	108	5903038.001	Washer DIN988-8x14x0.2	10							
28						8	9	111	5903128.001	Washer 35x8.4x1.25	10							
29					6			69	5903507.001	E-Ring DIN6799-3.2	10							
30						7	8	9	91	5903516.001	Snap Ring DIN471-8x0.8	10						
31						7	8	9	87	5903521.001	Snap Ring DIN471-A6	10						
32						7		89	5905196.001	Belt 150MXL 037	1			C	D	ac		
33						7		95	5905649.001	Belt 106MXL 037	1			C	D	ac		
34	3							6	5905652.001	Foot	1			C	D			
35						8	9	123	5905699.001	Stopper 25x1	1							
36						7		94	5905857.001	Belt 120MXL 037	1			C	D	bd		
37				6				70	5905866.001	Stopper 16x0.8	1					ac		
38				6				68	5905885.001	Stopper M4x10	1		B	C	D			
39				6				60	5906112.001	Spring	1			C	D			
40					7			90	5906135.001	Belt 300MXL 037	1			C	D	bd		
41				5				41	5906136.001	Spring	5							
42						7		99.1	5906157.001	Shock Absorber	5			C	D	ac		
43	3							4	5943004.001	Cover	1					ac		
44	3							10	5943007.001	Cover	1							
45						8	9	118	5943022.001	Knurled Knob	1				D			
46				6				63	5943025.001	Media Guide Ring	1				D			
47		4						17	5943107.001	Cable Power Supply	1							
48	3							8	5943113.001	Cover	1							
49	3							7.1	5943196.001	Baseplate	1					ac		
50				6				75	5943225.001	Strip	1							
51				5				57	5946113.001	Allen Key	1							
52					7			98	5946206.001	Stepper Motor	1			C	D			
53					7			88	5946238.001	Gear 29	1					bd		
54				6				73	5946413.001	Dispense Plate DP6	1					bd		
55				6				72	5946414.001	Tear-off Plate TP6	1					ac		
56	3							13	5946450.001	Locking System	1				D	bd		
57	3							12	5946462.001	Pinch Roller	1			C	D	bd		
58	3							7.2	5946478.001	Baseplate	1					bd		
59	3							14	5946480.001	Plate	1					bd		
60				6				59	5946570.001	Bearing Plate	1							
61				6				65	5946571.001	Bearing Plate	1							
62				6				62	5946575.001	Axle	1							
63				6				61	5946576.001	Axle	1							

PU Package unit

Notes

a - A6+/-

b - A6+/-P

c - A6+/- Direct Thermal

d - A6+/-P Direct Thermal

e - A6+/200 (P)

f - A6+/300 (P)

SPR Recommendation

A - wearing parts and accessories

B - recommended spare parts for quick repair

C - recommended spare parts for distributors

D - recommended spare parts for central stores

Pos.	Figure/Page						Nr.	Part No.	Description	PU	SPR				Notes	Serial No.	
																from	to
64				6			67	5946581.001	Swing	1							
65				7			99.2	5949727.001	Distance Bolt M4x10	1					bd		
66	3						3.4	5953897.001	Chassis	1					d		
67	3						11	5954013.001	Metal Cover	1							
68	3						9	5954016.001	Cover cab A6+	1							
69	3						3.1	5954019.001	Chassis	1					a		
70		4					33	5954020.001	Control Panel	1			C	D			
71						8	102.1	5954024.001	Ribbon Sensor	1			C	D	ab		
72		4					32	5954025.001	Control Panel Cover	1							
73		4					28	5954026.001	Holder	1							
74		4					26	5954027.001	Cable Control Panel	1							
75						8	102.2	5954028.001	PCB Detection	1					cd		
76			5				56	5954059.001	Lever	1							
77			5				40	5954060.001	Pivot Arm	1							
78				6			74	5954090.001	Label Sensor	1			C	D			
79		4					16	5954095.001	Cable Periphery	1							
80		4					25	5954097.001	Cable Control Panel	1							
81			5	6		8	34	5954098.001	Cable Sensors	1							
82			5				54.2	5954106.001	Printhead 6/300	1	A	B	C	D	f		
83						8	113	5954112.001	Wall Spacer	1							
84						8	103	5954114.001	Brake	1		B	C	D			
85						8	9	110	5954115.001	Gear 42	1						
86						8	112	5954120.001	Wall Spacer	1							
87						8	117	5954121.001	Cone	1				D			
88						8	9	115	5954124.001	Snap Ring	1		B	C	D		
89						8	122	5954129.001	Axle	1							
90						8	106	5954131.001	Spring	5							
91		4					24	5954132.001	Strip	5							
92			5				48	5954134.001	Bracket	1							
93						9	128	5954143.001	Cone	1				D			
94						9	125	5954145.001	Rewinder Wall Plate	1							
95						9	124	5954146.001	Slipping Clutch	1							
96						8	109	5954151.001	Slipping Clutch	1		B	C	D			
97					7		97.2	5954157.001	Roller	1					bd	139909	
98					7		96.2	5954158.001	Bolt	1					bd	139909	
99					7		86	5954160.001	Belt Tension Bracket	1					bd		
100		4					19	5954179.001	Cover Plate	1							
101					7		93	5954182.001	Shaft	1							
102					7		100	5954184.001	Shaft	1					bd		
103					7		96.1	5954185.001	Bolt	1					bd		139908
104			5				44	5954216.001	Profile	1							
105			5				54.1	5954217.001	Printhead 6/200	1	A	B	C	D	e		
106						8	116	5954221.001	Shell	3				D			
107			5				52	5954231.001	Printhead Mounting Bracket	1							
108			5				47	5954239.001	Spring	1							
109			5				43	5954240.001	Printhead Locking System	1							
110			5				51	5954242.001	Roller	1							
111			5				42	5954243.001	Roller Ribbon	1							
112				6			71	5954244.001	Profile	1							
113				6			76	5954245.001	Drive Roller DR6	1	A	B	C	D			
114				6			77	5954246.001	Roller RR6	1			C	D	bd		
115						8	120	5954248.001	Ribbon Takeup Hub	1							
116						8	119	5954249.001	Ribbon Supply Hub	1							
117						8	114	5954250.001	Axle	1							
118						9	129	5954251.001	Internal Rewinder	1							
119						9	126	5954252.001	Shaft, Takeup	1							
120						9	127	5954253.001	Shell	3							
121			5				36	5954258.001	Cable Printhead	1							
122			5				35	5954259.001	Cable Printhead	1							
123			5				49	5954261.001	Bracket	1							
124	3						2	5954399.001	Cover Plate	1							
125		4					30	5955034.001	PCB Navi Button	1			C	D			
126		4					20	5955046.001	Power Input Module	1			C	D			

PU Package unit

Notes

a - A6+...

b - A6+...P

c - A6+... Direct Thermal

d - A6+...P Direct Thermal

e - A6+/200 (P)

f - A6+/300 (P)

SPR Recommendation

A - wearing parts and accessories

B - recommended spare parts for quick repair

C - recommended spare parts for distributors

D - recommended spare parts for central stores

Pos.	Figure/Page							Nr.	Part No.	Description	PU	SPR				Notes	Serial No.	
																	from	to
127		4						21	5956220.001	Power Supply	1			C	D			
128				6				78	5958711.001	Side Plate	1					ac		
129				6				79	5958713.001	Side Plate	1					bd		
130	3							3.2	5958778.001	Chassis	1					b		
131	3							3.3	5958779.001	Chassis	1					c		
132					7			84	5959611.001	Adapter 75 mm Ø	1							
133					7			81	5959612.001	Adapter 75 mm Ø	1							
134					7			82	5959624.001	Knurled Screw	1							
135			5					55	5959742.001	Side Plate	1							
136					7			80	5959807.001	Media Hub	1							
137					7			85	5959937.001	Margin Stop	1							
138					7			83	8910053.001	Square Nut M4 8mm	10							

Pos.	Figure/Page							Nr.	Part No.	Description	PU	SPR				Notes	Serial No.	
																	from	to
139								-	5550611.001	Power Cable Type E+F	1							
140								-	5901655.001	Cable USB	1							
141								-	9109293.001	Packaging	1							
142								-	9009133.001	DVD A+ de/en/fr	1							

PU Package unit

SPR Recommendation

A - wearing parts and accessories

B - recommended spare parts for quick repair

C - recommended spare parts for distributors

D - recommended spare parts for central stores

Notes

a - A6+/-

b - A6+/-P

c - A6+/- Direct Thermal

d - A6+/-P Direct Thermal

e - A6+/200 (P)

f - A6+/300 (P)