

LATITUDE

freedom from business as usual



LATITUDE™ E5500 and E5400 Technical Guidebook



TABLE OF CONTENTS

| | |
|-----------------------------------|-------|
| E-Family Overview | 3 |
| Key Features | 4 |
| All Day Computing* | 5-13 |
| All-Day Battery Life* | 6 |
| Connectivity | 7-8 |
| Dell ControlPoint | 9-13 |
| Inspired Design | 14-21 |
| Durable Design | 15 |
| Usability | 16 |
| Docks and Peripherals | 17-19 |
| Peace of Mind | 20-24 |
| Dell Services | 21-22 |
| Security | 23-24 |
| Total Control of ownership | 25-26 |
| System Management | 26 |
| The Green side of Latitude | 27 |
| Core Technologies | 28-30 |
| New Performance Architecture | 29 |
| Graphics | 30 |
| Product Gallery | 31-39 |
| E5400 Product Views | 32-34 |
| E5400 Technical Overview | 35 |
| E5500 Product Views | 36-38 |
| E5500 Technical Overview | 39 |
| Detailed Technical Specifications | 40-66 |



LATITUDE E5500, E5400 freedom from business as usual

At last, business class notebooks that pull their own weight and work like they're supposed to, free from excessive hassles and constant overhauls. Beautiful and rugged, the E5500 and E5400 deliver mobile computing that works as hard as you do, anytime, anywhere. It's freedom from business as usual.

IT Customer Viewpoint

I'm caught in a difficult place. It's hard to balance the desires and demands of our workforce with the concerns of managing our systems smoothly and securely. I should be able to manage our notebooks anywhere in the world without leaving my desk. My company data should be just as safe on the other side of the world as in the home office. I'm tired of notebooks that let my end-users down, forcing me to scramble and quickly find replacements.

End User Customer Viewpoint

I'm sick of big, heavy notebooks that sometimes connect to wireless networks and other times leave me stranded. And I'm tired of having my workflow interrupted because my battery lets me down. I need a notebook that looks good and doesn't slow me down with a difficult-to-use keyboard or trackpad. If I have lots of trouble using it, it's worthless to me.

Latitude™ E-Family Answer

Dell is inspired by you. You're tired of compromise, so we designed a family of notebooks where sacrifice was no longer necessary. No detail went overlooked, inside or out. We didn't stop until we created a notebook that is both rugged and beautiful. That can keep you working anywhere, anytime. No need for frantic calls to IT because established leadership for Latitude notebooks is designed to deliver superior manageability to help provide IT control. Dell ProSupport* services offer a globally consistent customer-driven support portfolio and our new Dell ProSupport Mobility Services* offer our broadest solution focused on protecting your notebooks and data. So now you can get more done and your business moves forward. With Dell™ E5500 and E5400, you're finally free from business as usual.



Latitude E5400 and E5500 notebooks deliver proven technology for business-class computing. All the essential features you need in a notebook to maximize user and IT productivity empowered by leading-edge IT simplification technologies. Latitude notebooks are designed for ultimate productivity and low total cost of ownership.

Key Features:

- Redesigned for optimum performance at every level. Sleek with robust hinges and latches for improved durability. Plus a new keyboard designed for accuracy, durability and comfort .
- Extended battery life that works as hard as you do— E5500 and E5400 notebooks can get up to 8 hours* on a single optional 9-cell battery
- Anytime, Anywhere wireless connectivity* supports all current wireless technology like Wi-Fi®, mobile broadband*(available on E5400 only), Bluetooth® 2.1, and, High Performance Wireless draft-n.
- Seamless transitions from on-the-move to desktop with new Latitude family docking solutions.
- Dell ControlPoint™ creates an awesome user experience by simplifying your Wi-Fi connections. Make adjustments to management profiles without taxing your system memory.



All Day COMPUTING



All-Day Battery Life*

Dell introduces a dramatic step forward in battery life: batteries that can last and last for all-day computing.

An optional 9-cell battery can free you to work for up to a full 8-hour work day*.

Extend your battery service with optional Extended Battery Service* during your system's 3-year Limited Hardware Warranty*.

Take advantage of short charge time opportunities with **ExpressCharge™** - charges the battery in about two hours.



Connectivity

Free yourself from cables with our excellent antenna design supporting Mobile Broadband* (available on E5400 only) and draft Wireless-N in addition to emerging wireless technologies like Bluetooth 2.1.

Integrated Dell Mobile Broadband*

(available on E5400 only) (cellular data) mini-cards provide wide area data connectivity via national cellular networks. With average download speeds of up to 7.2 Mbps*, you can remain productive wherever you go.* Both EV-DO Rev A and HSPA solutions available; tri-band HSPA solutions support international roaming capability.

Dual 5-band mobile broadband antenna

(available on E5400 only) provides support for all major worldwide frequency bands using GSM standard. International travelers who use the GSM mobile broadband* cards can roam between the U.S. and Europe and get 3G speeds on GSM networks. Furthermore, you can get investment protection for after point of sale card purchases or even next generation card upgrades because the antennas to support are already there.

Mobile broadband cards have built-in GPS functionality that can be used with location-based applications like Garmin® and Microsoft® Streets & Trips (available on E5400 only).

WiFi Catcher™

Wireless on/off switch and sniffer button allows user to easily find out if a connection is available, even when the system is off. Use the switch to turn off antennas when not in use to save battery life. Easy to check for available networks without opening or turning on the notebook.



Connectivity

Wi-Fi

Intel® Centrino® Mobile Technology

Latitude E5500/E5400 offer Intel® Centrino® mobile technology featuring the Intel WiFi Link 5100 or 5300 Draft 802.11n Wi-Fi cards, Intel Core™ Processor and Intel 945GE chipsets. Intel Centrino Mobile Technology delivers excellent wireless performance while enabling great notebook battery life.



Dell Wireless LAN

Latitude E5500/E5400 feature a choice of Dell Wireless Wi-Fi solutions with the option of either the Dell Wireless 1397 802.11g or the Dell Wireless 1510 Draft 802.11n Wi-Fi cards.



Personal Area Networks enable connection to devices and peripherals such as keyboards, mice, printers, scanners and wireless docking stations within a PAN.

Dell Wireless 370 Bluetooth Wireless

The Dell 370 card features the latest Bluetooth version 2.1 + EDR technology with a throughput of 3Mbps*.

The Dell 370 offers firmware upgradeability to the forthcoming Bluetooth 2.1 update for Windows Vista® OS.

Compared to the previous Dell 360/Bluetooth 2.0 combination, the new Dell Bluetooth 2.1 offerings can provide longer battery life and easier pairing for Bluetooth 2.1-capable devices.

Allows cable-free computing with Bluetooth enabled devices such as keyboards, mice, PDAs, headsets & mobile phones.



Dell's Wi-Fi and Bluetooth solutions are designed to work together with minimal interference. The optional Dell Wireless 370 Bluetooth module incorporates its own dedicated antenna and radio to help achieve optimal performance.



The Tools You Need

New Dell ControlPoint software puts you in complete control. It provides a single access point with intuitive navigation to easily configure your notebook the way you need it.

With a single hot key combination, you have access to the settings you need: power management, displays and devices, connections, security and system information. Consistent visual user interface throughout all these applications means easy, natural interaction for end users.

User Selectable Modules with Tight Administrative Controls

IT managers have the option to install all of the modules or pick and choose specific modules for their custom system images. IT managers can also control user configurable options, create company specific branding, and enable company help files and automated links to additional web content.



Dell ControlPoint

Power Settings

The ControlPoint Power Settings module provides a wide-ranging set of power management configuration, alerting capabilities and sleep modes.

Battery Status

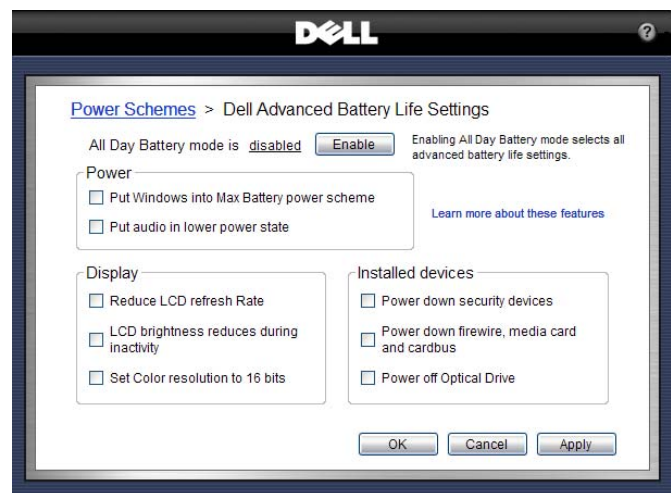
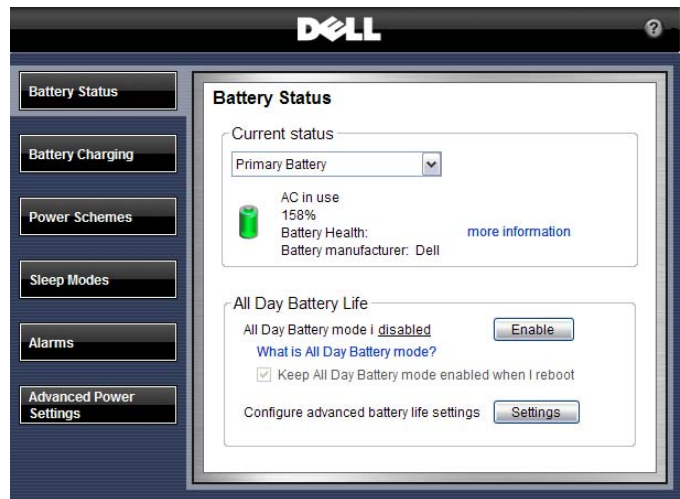
Quickly view battery status, available charge and health. Users can also easily configure advanced power settings to maximize battery life.

Power Scheme and Sleep Mode

Choose the preset Extended Battery Mode to maximize your battery life

Custom-configure power schemes to work the way you want to work

Sleep modes can be quickly configured along with standby and hibernate settings

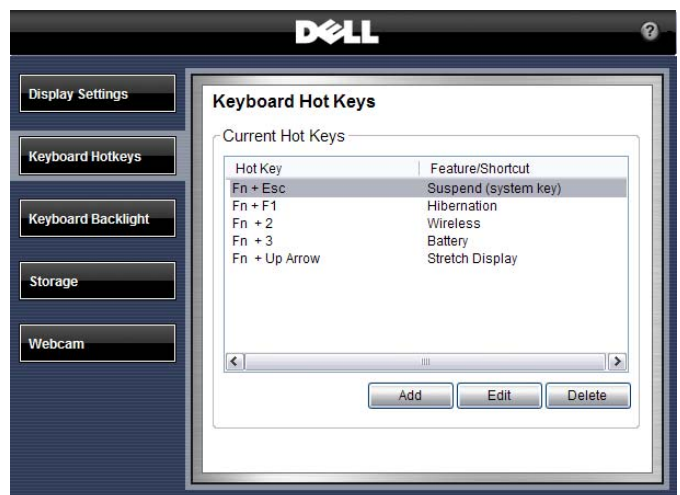
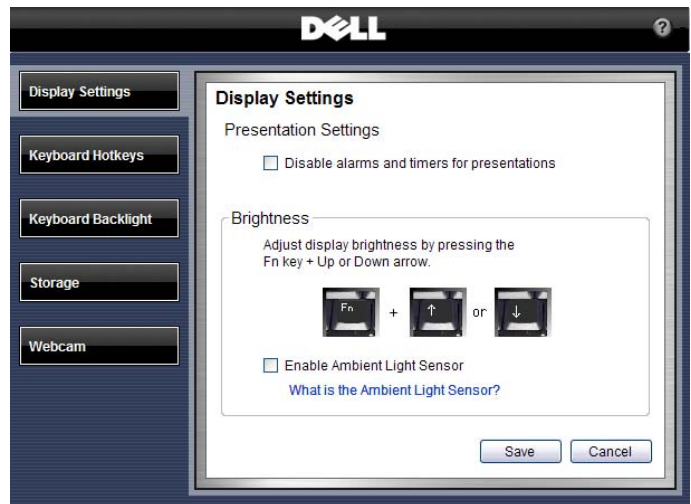


Display and Devices

The Dell ControlPoint Display & Devices module provides a variety of configurable settings for your display as well as other devices attached or installed with your system. Some key configurable features include the presentation mode with projectors, ambient light sensor and keyboard backlighting capabilities.

Keyboard Hotkeys

Customers can easily set up a series of custom hot keys to meet their individual work environment requirements



Dell ControlPoint Connections Manager

For fast and easy connections to any device or network, the Connections Manager module provides a comprehensive communications management environment: Ethernet, Dial-Up, Wi-Fi, Mobile Broadband* (available on E5400 only) and GPS (available on E5400 only)

Users can also enable and disable any of the available radios on their notebook – Wi-Fi, Bluetooth, GPS or Mobile Broadband*.

Location Profiles and Administrative Controls

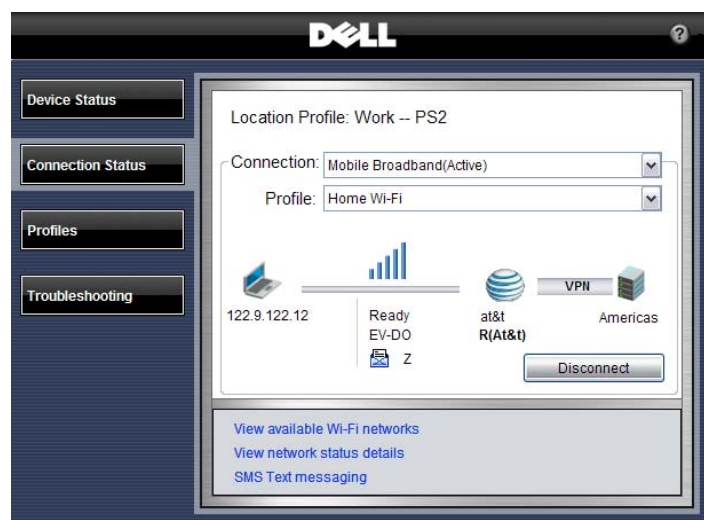
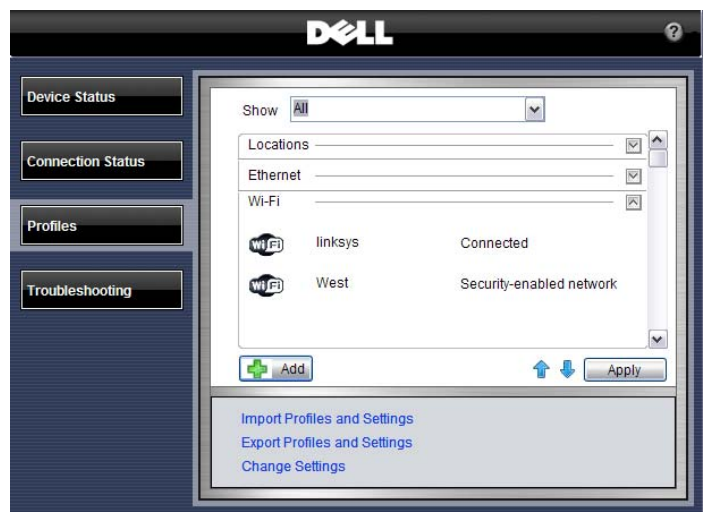
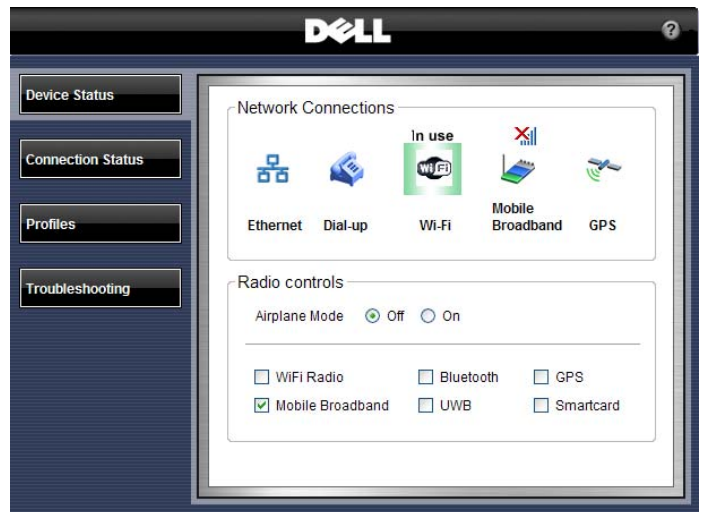
Create multiple mobile Profile Settings such as printer, browser, VPN and network, as well as mobility settings for adapter and profile switching.

Define, export, and import usage profiles. Customize printer setup, application launch, drive mapping, and more.

Administrative controls with the ability to limit user configurable options.

Enhanced Diagnostics and Administrative Tools

- Simple and advanced configuration and status dashboard
- Enhanced multi-network connection diagnostics and event logging
- Hardware diagnostics for all devices
- Error and Connection Status log
- Profile import/export and locking



Dell ControlPoint Security Center

As more critical data becomes mobile the need for enhanced security is vital. The Dell ControlPoint Security Center module provides access to use authentication, encryption, fingerprint readers and smart card technologies.

Security Status

Quickly view system security status

Manage Logins and Passwords

Require fingerprint for login

Set a pre-boot password

Manage Windows® password settings

Manage Data Protection

Set hard drive password

Manage document vault

Manage encryption



INSPIRED DESIGN.



Sleek, Durable Design

Latitude E5500 and E5400 have been designed to deliver proven technologies for everyday computing. They provide exceptional value without compromising essential features.

Exceptional durability with redesigned robust hinges & latches.

Strike Zone™ helps improve hard drive protection in the event of a fall by dissipating shock.

Our 7200rpm hard drives now come standard with Free Fall Sensors.

Keyboard durability focus means E-Family is designed for improved keycap retention and screen printing on keys.



Outstanding Usability

Excellent usability with redesigned keyboards that deliver accuracy, comfort, and outstanding feel.

Latitude notebooks are designed for the ultimate user experience with one click access to all user settings with new Dell ControlPoint software.



Expanding Mobile Experience

Redesigned sleeker, smaller docks and peripherals deliver a seamless experience between your desktop and mobility – including the new E-Port and notebook stand – designed for the smallest footprint.

E-Port Plus offers Dual Digital Monitor capabilities along with legacy ports - The non-compromise station designed for enhanced usability at desk supports hot and warm docking.

E-Port is a space-saving port replicator for graphics as well as latest ports. Suitable for home and office environment enables you to conveniently connect to your desk peripherals.

E-Legacy Extender can be attached to the bottom of the notebooks adding parallel, serial, PS/2 and 2 USB connectors when needed.



E-Port Plus side and back views



E-Port side and back views



E-Legacy Extender back view



E-Flat Panel Stand

The Integrated Flat Panel Stand is a functional stand designed for the new Latitude E-Port and E-Port Plus. It accepts Dell Flat Panels via the Dell Quick Connect connector (default) as well as standard VESA mount (requires screws).



E-Flat Panel Stand with dual flat panel monitor desktop configuration



E-Flat Panel Stand front and side views with E-Port Plus



E-Monitor Stand

The Basic Monitor Stand is an accessory of the E-Port and E-Port Plus that enables use of any LCD flat panel monitors and CRT monitors.



E-View Laptop Stand

This stand provides an innovative way to use the notebook LCD versus an external monitor at the end users desk. E-Family notebook stand is adjustable and enables the user to elevate the LCD panel to a comfortable position. It also requires significantly less desk space than a dock and external monitor.



PEACE OF MIND IS PART OF THE PACKAGE.



Dell ProSupport Mobility Services*

Our broadest solution for protecting your notebooks and data. Committed to enabling your mobile workforce, minimizing downtime and protecting your investment.

Asset Protection Options enable your mobile workforce while protecting your investment with Extended Battery Service*, CompleteCare Accidental Damage Service* and Dell ProSupport Laptop Tracking and Recovery and Remote Data Delete*, which helps you feel more secure knowing Dell can track it and remotely delete your sensitive data to help prevent potential loss of valuable data.

Data Protection Options featuring Keep your Hard Drive*, Dell ProSupport Certified Data Destruction* services. Dell ProSupport Data Recovery helps enable you to recover data when you have a failed hard drive and did not back up your system.

Solve asset issues while keeping end users productive on the road.

CompleteCare Accidental Damage Service* coverage for notebooks that have encountered liquid spills, electrical surges, drops, falls, and extreme temperatures.

Dell ProSupport Laptop Tracking and Recovery and Remote Data Delete* assists in finding a lost or stolen laptop, via tracking software loaded on the system and enables remote initiation of a disk drive data wipe in the event the system is lost or stolen.

Extended Battery Service* aligns battery coverage with your laptop usage during the term of your Limited Hardware Warranty*, and provides one additional replacement battery during years 2 or 3 of coverage.



Deployment Services – Options to help customers more effectively execute Windows Vista® migrations and E-Family deployments

ImageDirect Service is cross-platform to help ensure a streamlined transition to new Latitude E-family systems from legacy Dell products. With ImageDirect, your image is only a few mouse clicks from being ready to deploy as opposed to the few weeks inherent with traditional image make-ready.

Dell Automated Deployment (DAD) patent pending tools and processes that reduce technician intervention thereby allowing the technician to spend just minutes at a PC instead of hours. Dell Client Migration and Deployment Services deliver the upfront planning and automated implementation that can reduce cost and help minimize disruption to ongoing productivity by reducing up to an estimated 88%¹ of the desk-side technician time and by eliminating an estimated 70%¹ of the network traffic associated with deployment¹.

- **Dell Data Direct™ (DDD)** captures and migrates complete end-user accounts, including OS and application settings, printers, data files, and more.

Dell desktop management services enable IT organizations to manage mobile, distributed workforces via the web anytime from virtually anywhere in the world. This powerful, scalable and cost effective Software-as-a-Service (SaaS) platform model is activated with a simple Internet connection. Our comprehensive set of software services are delivered via a single, integrated Web-based management console.

- **Asset Management** – automated tracking of software, hardware, and software licenses for all desktops and laptops, regardless of location.
- **Patch Management** – Helps protect corporate and remote users through a fully automated or targeted patch management approach.
- **Anti-Malware & Virus Management** – Provides management of advanced antivirus, antispymware, anti-malware and firewall solutions from world class vendors including Symantec™, McAfee® and Microsoft®.
- **Data Encryption** – Encrypts and protects data on an online or offline PC to help prevent its compromise or misuse allowing organizational control of that data even when the user has lost control of the device.
- **Online Backup** – Designed to deliver safe, secure, and automated backup over the Internet powered by Iron Mountain® software and storage at fully redundant offsite facilities.
- **Software Distribution** – Drives adherence of corporate standards by automating the distribution of new applications and upgrades as well as helping to maintain uniform configurations throughout the organization including support for Faronics' Deep Freeze.

¹Based on an internal assessment of select Dell customers compiled from October 2006 to October 2007, compared to systems without automated deployment.



Simply Secure

Information technology has become a backbone for our customers. It is a daily tool for real time collaboration as well as crucial business data storage. At the same time, our world has become extremely mobile: valuable files are sent over the networks or carried around the planet on notebooks. As a result, there is a growing threat for data loss or leakage.

Whether you need enhanced physical protection or easy to manage protection for your critical data, Dell's security offerings can help. We are committed to simplifying security deployment, usage and maintenance, in order to allow smaller businesses to acquire relevant security and larger organizations to implement at low total cost of ownership impact.

Deploy Faster

The complexity of IT can slow down even the most tightly run organization. By speeding up deployment and configuration, you can reclaim wasted time and redirect it toward growing your business.

Dell can deliver an exceptionally secure system directly from the factory that covers all four key aspects of security: System Protection, Access Control, Data Protection and Malicious Threats prevention.

With Dell's Custom Factory Integration (CFI), we can deliver pre-configured systems including non-Dell standard hardware and proprietary software right out of the factory.

CFI offers security features such as custom asset tags, and StopTrack or TLS labels.



Prevent Smarter

You want to prevent security breaches into your business. But security is complex and there are many aspects to it. Choices are difficult to make, stable technologies cannot be identified, and you could suffer from skyrocketing costs and complexity.

Based on long-lasting technologies, Dell end-point security solutions enable you to protect business assets by including relevant and long term technologies in our notebooks.

The Latitude E5500 and E5400 are designed with these multi-factor authentication technologies:

- Integrated fingerprint reader option
- Smart card reader option through PCMCIA slot

Furthermore, we make security easy for the user as well by providing easy to use software that supports multiple technologies through a single console in Dell ControlPoint Security Manager (see page 13 of this guide for more.)



PUTS IN THE HOURS.
WORKS WELL WITH OTHERS.
ALWAYS COMES IN UNDER BUDGET.



Latitude notebooks work like they're supposed to, with freedom from hassles and constant overhauls. They're the ultimate team player, letting you manage notebooks virtually anywhere in the world without leaving your desk. Finally, an IT investment that doesn't cost a fortune coupled with business-class service that is truly first class. Freedom from hassles with technology that gives you Total Control of Ownership.

Unplanned change costs your business time, money and people. Dell minimizes change to help you reclaim and refocus your resources.

Long product lifecycles and proactively managed product transitions help minimize costs and headaches. Long lifecycle and long overlap means customers have time to evaluate the new product, create a new image and plan the transition as fits their business needs.

Consistent configurations worldwide simplify global deployment and management.

Image stability is key. Carefully managed change means fewer image impacts. When change is unavoidable, Dell gives you the tools for early notification months before they happen.

Dell ImageWatch™ is a flexible and easy to use tool that enables proactive transition management for Dell customers.

Compatible peripherals, adapters, and docking

Share accessories among users and among systems within the family.



The Green Side of Latitude

Dell's environmental stewardship program strives to conserve product energy consumption, reduce or eliminate materials for disposal, prolong product life span and provide effective and convenient equipment recovery solutions. By streamlining business steps and processes, Dell minimizes stress on the environment while achieving speed, responsiveness and cost savings that can be passed along to customers.

Product Concept and Design – with Environment in Mind

Dell's focus on improving environmental performance starts with our Design for the Environment (DfE) approach. When designing new systems, engineers consider environmental factors such as material composition of components, amount of materials used, energy efficiency as well as design attributes that aid in recycling.

The Latitude brand has a history of leadership in delivering environmentally-conscious notebooks:

- 1st business Notebook to achieve EPEAT Gold (Latitude D630)
- 1st Notebook to implement Energy Star 4.0 Standard (Latitude portfolio May 2007)

Minimize Energy Consumption

- 1st Energy Star 4.0 Compliant Notebooks (Latitude portfolio, May 2007)
- Industry Leading Energy Smart Power Management Settings on all Latitude Notebooks
- Energy Efficient Technologies (CPU, LED Backlight etc.)
- 87% Averaged Efficiency for E-Family External Adapters

Minimize Toxins

- WW RoHS (Lead-Free) Compliant since July 2006
- China RoHS Compliant
- Mercury Free LCD Panels (Available on Latitude XT, E4300, E4200)

Minimize Waste

- Recycled Packaging with 25% Post Consumer Cardboard
- Asset Recovery and Recycling Services



Core Technologies



New Performance Architecture

Intel® Core™ 2 Duo Processor

Dell Latitude E5500 and E5400 are equipped with Intel® Core™ 2 Duo mobile technology, featuring the Intel GE45 Express chipset. You get powerful mobile dual-core processors with 3MB or 6MB Level 2 cache and up to 4GB* of 800MHz dual-channel DDR2 system memory*.

Intel® Centrino® 2 processor technology provides a forward leap in wireless connectivity, battery life and performance. What's more, thanks to a breakthrough 45nm design, users can enjoy true energy efficiency. Intel® Centrino® 2 processor technology helps meet Energy Star™ requirements without sacrificing performance.

Chipset and Memory

Intel® GE45 Express Chipset features:

- Support for up to 4GB* system memory and for dual memory channels and DDR2 800MHz memory*
- 1066MHz front side bus
- Serial ATA hard drive support
- Up to 6 PCI express ports
- Small footprint (size)

Dual Channel DDR2 Memory*

DDR2 offers dual-channel capability for additional bandwidth and performance, reduced power consumption and scalability to help increase performance with processor and chipset bus architecture.

PCI-Express (PCI-E) Technology

Serial I/O and Graphics Interconnect provide high performance (up to 8GB/sec bandwidth) backwards compatibility with PCI implementation. PCI-Express is expected to keep pace with processor and I/O advances for the next 10 years or more, so it is designed to address your technology for the foreseeable future.



Graphics*

The Latitude E5500 and E5400 utilize the latest Intel integrated graphics.

Mobile Intel® Graphics Media Accelerator 4500MHD brings the next generation benefits of dialed up performance, power management and support for new technologies.

Intel GMA 4500MHD helps deliver a next generation video and 3D experience:

- Clear and accurate video playback with crisp details
- Support for advanced features like Picture-in-Picture
- Use new video display connectors HDMI and DisplayPort
- Full hardware decode enables smooth playback of next generation HD AVC, VCI, MPEG2 content.
- View weave and jitter-free playback of static and fast-moving objects with SD and HD de-interlacing which applies multiple fields to construct progressive frames.
- Experience rich 3D graphics applications with Microsoft® DirectX® 10 and DXVA 2.0 – new industry graphics feature and acceleration technologies
 - Accurately scale images to fit different display resolutions with Panel Fitter 2
- Efficient and intelligent balancing of shared system memory usage between graphics and other applications with DVMT 5.0

Users can experience the latest power conservation features of Intel GMA 4500MHD. Intel® Graphics Power Modulation Technology helps extend battery life through dynamic switching of render core voltage and frequency. Graphics Render Standby puts render engine into standby during periods of inactivity and dynamically lowers render core voltage.



Product Gallery



E5400 Weight, Dimensions, and Top View

**Starting Weight w/
4-cell battery:**
5.42lb/2.46Kg*

Dimensions:
Width: 13.31"/338mm
Depth: 9.61"/244mm
Height: 1.46"/37mm

**Robust
redesigned
metal hook**



**Ambient light sensor can
be customized in Dell
ControlPoint to adjust
display and backlit
keyboard brightness**

**Precision-tuned
keyboard**

Wi-Fi Catcher

**Quick touch volume
up, down and mute
buttons**

SD/MMC Card Reader

Robust hinge construction

**Hot Key to launch
Dell ControlPoint
console <Fn+F7>**



**Optional fingerprint reader is
located at the bottom of the
right speaker grill**



E5400 Right View



Optical Drive

Headphone jack

Lock Slot

Microphone Jack

AC adapter plug

2 USB ports



E5400 Left View



Latitude E5400 Technical Specifications

Processors

Intel® Core™ 2 Duo and Celeron Processors
Up to T9400 (2.53GHz, 6MB L2 Cache)

Operating Systems

Genuine Windows Vista® Business
Genuine Windows Vista® Home Basic
Genuine Windows Vista® Business Bonus with
Windows XP Professional preinstalled*

Chipset

Intel® 45 Express Chipset

Displays

14.1" UltraSharp™ Widescreen WXGA+ (1440x900)
LED Display
14.1" Widescreen WXGA (1280x800) Display

Memory

Dual Channel DDR2 Memory*
Two Memory slots offering up to 8GB*
Memory Bandwidth: 800MHz

Primary Storage Options

7200RPM Free Fall Sensor Hard Drive up to 160GB*
5400RPM Encrypted Hard Drive up to 120GB*
5400RPM up to 250GB*

Optical Drive Options

DVD-ROM, CD-RW/DVD, DVD+/-RW

Graphics Card

Mobile Intel® Graphics Media Accelerator
X4500MHD*

Power

90 Watt AC adapter with cord wrapping
4-cell, 6-cell or 9-cell extended life battery options

Chassis

Weight starting at: 5.42 lbs/2.46 kg*
Dimensions
Width: 13.31"/338mm
Depth: 9.61"/244mm
Height: 1.46"/37mm

Connectivity

Wired:

10/100/1000 Gigabit Ethernet
56K v924 Internal Modem (Optional)

Wireless:

Dell Wireless 1397 (802.11b/g);
Dell Wireless 1510 (802.11a/g/draft n);
Intel WiFi® Link 5100 (802.11a/g/draft n 1x2)
Intel WiFi Link 5300 (802.11a/g/draft n 3x3) Mini-Cards
Dell Wireless 370 Bluetooth® 2.1 Mini-card Module
Dell Wireless 5530 Mobile Broadband* (Tri-band HSDPA
7.2/HSUPA 2.0) Mini-Card with GPS and service from AT&T
(US) and Vodafone (select countries in Europe)
Dell Wireless 5720 Mobile Broadband* (EVDO Rev A) Mini-
Card with GPS and service from Verizon Wireless (US),
Sprint (US)

Security

Physical Security:

Steel-reinforced Cable Lock Slots, Media Module and Hard
Drive Locks.

User & System Security:

PCMCIA SmartCard Reader (Post-RTS option)
Fingerprint Reader (optional)
TPM 1.2*
Optional Encrypted Hard Drive provides full disk encryption

Network Security:

802.11 Wi-Fi Protected Access (WPA), 802.11i (WPA2),
Virtual Private Networks (VPN) 802.1x with EAP modes and
compatible with CCX 4.0

Multimedia

2 speakers, digital microphone

Expandability

Slots:

SD/MMC card reader; PCMCIA

Docking:

E-Port, E-Port Plus, E-Legacy Extender, E-Flat Panel Stand, E-
Monitor Stand, E-View Laptop Stand, E-Media Bay

Modular Options:

Travel Lite Module

Ports

1394, USB 2.0 (x4), VGA, RJ-11 (optional), S-video, RJ-45,
Audio



E5500 Weight, Dimensions, and Top View

Starting Weight w/4-cell battery:
6.17lb/2.80Kg*

Dimensions:
Width: 13.99"/355mm
Depth: 10.24"/260mm
Height: 1.48"/37.5mm



Robust redesigned metal hook

Precision-tuned keyboard

Wi-Fi Catcher

Quick touch volume up, down and mute buttons

SD/MMC Card Reader

Robust hinge construction

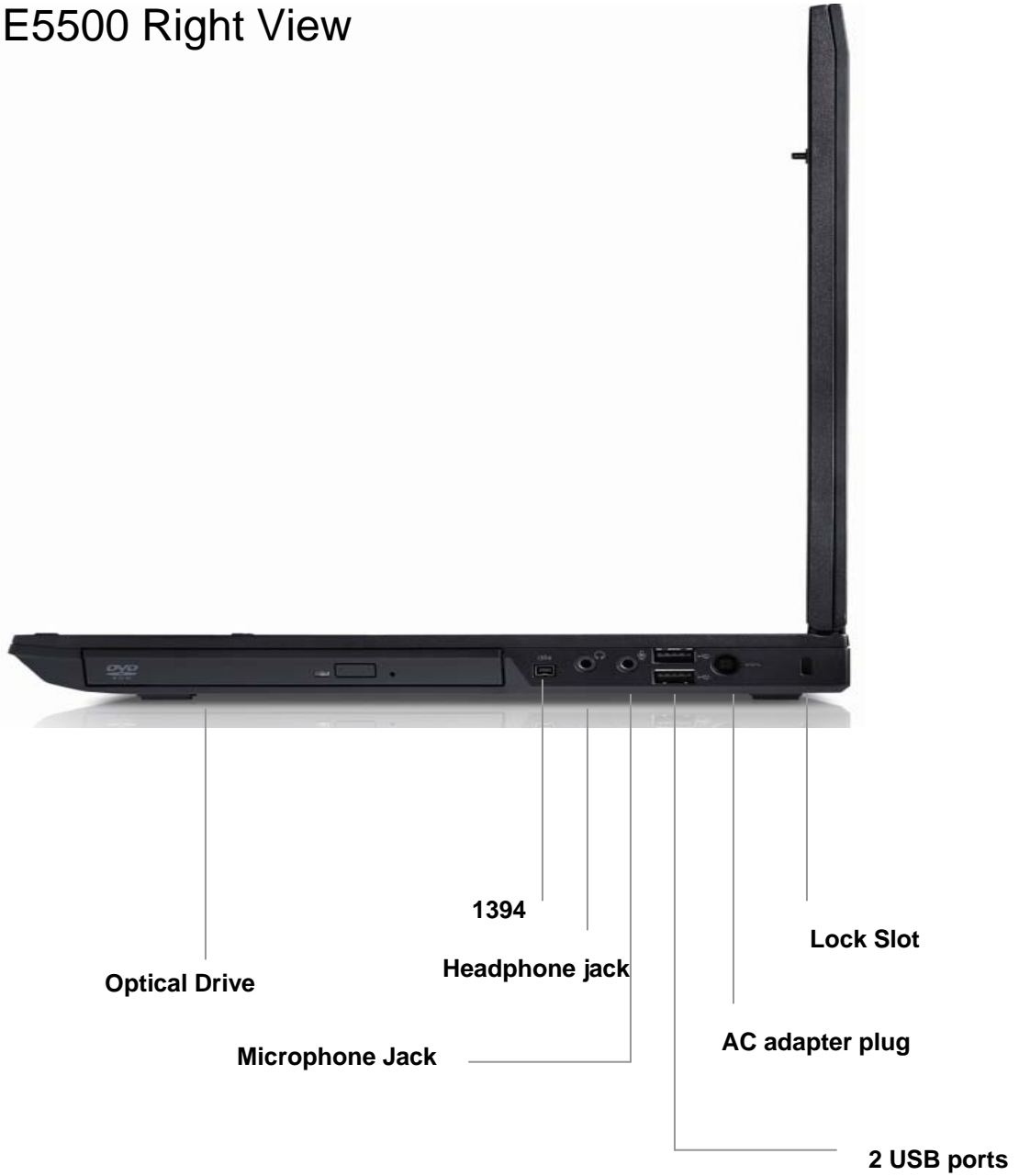
Hot Key to launch Dell ControlPoint console <Fn+F7>



Optional fingerprint reader is located at the bottom of the right speaker grill



E5500 Right View



E5500 Left View



Latitude E5500 Technical Specifications

Processors

Intel® Core™ 2 Duo and Celeron Processors
Up to T9400 (2.53GHz, 6MB L2 Cache)

Operating Systems

Genuine Windows Vista® Business
Genuine Windows Vista® Home Basic
Genuine Windows Vista® Business Bonus with XP
Professional preinstalled*

Chipset

Intel® 45 Express Chipset

Displays

15.4" UltraSharp™ Widescreen WXGA+ (1440x900)
LED Display with TrueLife™
15.4" UltraSharp™ Widescreen WXGA+ (1440x900)
LED Display with anti-glare
15.4" Widescreen WXGA (1280x800) Display

Memory

Dual Channel DDR2 Memory*
Two Memory slots offering up to 4GB*
Memory Bandwidth: 800MHz

Primary Storage Options

7200RPM Free Fall Sensor Hard Drive up to 160GB*
5400RPM Encrypted Hard Drive up to 120GB*
5400RPM up to 250GB*

Optical Drives

DVD-ROM, CD-RW/DVD, DVD+/-RW

Graphics Card

Mobile Intel® Graphics Media Accelerator
X4500MHD*

Power

90 Watt AC adapter with cord wrapping
4-cell, 6-cell, or 9-cell extended life battery options

Chassis

Weight starting at: 6.17lbs/2.80kg*
Dimensions:
Width: 13.99"/355mm
Depth: 10.24"/260mm
Height: 1.48"/37.5mm

Connectivity

Wired:

10/100/1000 Gigabit Ethernet
56K v924 Internal Modem (Optional)

Wireless:

Dell Wireless 1397 (802.11b/g);
Dell Wireless 1510 (802.11a/g/ draft n 2x2);
Intel WiFi® Link 5100 (802.11a/g/ draft n 1x2)
Intel WiFi Link 5300 (802.11a/g/ draft n 3x3) Mini-Cards
Dell Wireless 370 Bluetooth® 2.1 Module

Security

Physical Security:

Steel-reinforced Cable Lock Slots, Media Module and Hard Drive Locks.

User & System Security:

PCMCIA Smart Card Reader (Post RTS option)
Fingerprint Reader (optional)
TPM 1.2*
Optional Encrypted Hard Drive provides full disk encryption

Network Security:

802.11 Wi-Fi Protected Access (WPA), 802.11i (WPA2),
Virtual Private Networks (VPN) 802.1x with EAP modes and
compatible with CCX 4.0

Multimedia

2 speakers, digital microphone

Expandability

Slots:

SD/MMC card reader; PCMCIA

Docking:

E-Port, E-Port Plus, E-Legacy Extender, E-Flat Panel Stand, E-Monitor Stand, E-View Laptop Stand, E-Media Bay

Modular Options:

Travel Lite Module

Ports

1394, USB 2.0 (x4), VGA, S-video, RJ-11 (optional), RJ-45,
Audio, serial



Detailed Technical Overview and Configuration Specifications



System Configurations

| Operating Systems NOTE: Choice of one of the following Operating Systems to be preinstalled. | E5500, E5400 |
|---|--|
| Windows Vista® operating system | Genuine Windows Vista® Business Genuine Windows Vista® Home Basic (SPI when available) |
| Windows Vista® Bonus with XP Professional preinstalled* | Genuine Windows Vista Business Downgrade* |
| Other | Suse SLED Linux (China only), |
| OS Media Support | Can order with or without media |

| Chipset | E5500 | E5400 |
|--|-----------------------------------|--------------|
| Intel® GE45 Express Chipset (Montevina) | x | x |
| TPM 1.2* Security Device (Trusted Platform Module) (where available) | 16KB located at TPMIP2 on chipset | |
| Broadcom 5756/5761 Gigabit Ethernet Controller | x | x |

| Processors (speed, system bus, wattage, cache) | E5500, E5400 |
|---|---------------------|
| Intel® Core™ 2 Duo Processor T9400 (2.53GHz, 1066MHz FSB, 35 watts, 6MB L2 cache) | |
| Intel® Core™ 2 Duo Processor P9500 (2.53GHz, 1066MHz FSB, 25 watts, 6MB L2 cache) | |
| Intel® Core™ 2 Duo Processor P8600 (2.4GHz, 1066MHz FSB, 25 watts, 3MB L2 cache) | |
| Intel® Core™ 2 Duo Processor P8400 (2.26GHz, 1066MHz FSB, 25 watts, 3MB L2 cache) | |
| Intel® Celeron® Processor 585 (2.3GHz, 800MHz FSB, 35 watts, 1MB L2 cache) | |
| Intel® Celeron® Processor 575 (2.0GHz, 800MHz FSB, 35 watts, 1MB L2 cache) | |

NOTE: Processor numbers are not a measure of performance.



Memory

Latitude E5400 and E5500 support a maximum of 4GB of memory* when you use two 2GB DIMMs. 32-bit operating systems, such as the 32-bit version of Microsoft® Windows® XP, can only use a maximum of 4GB of address space. Moreover, certain components within the computer require address space in the 4GB range. Any address space reserved for these components cannot be used by computer memory; therefore, the amount of memory available to a 32-bit operating system is less than 4GB.

Memory modules should be installed in pairs of matched memory size, speed, and technology for optimal performance. However, even if the memory modules are not installed in matched pairs, the computer will continue to operate.

| Memory* | E5500, E5400 |
|------------------------------|---|
| DIMM slots | 2 |
| DIMM speed | 800 MHz |
| Minimum Memory Configuration | 1GB |
| Maximum Memory Configuration | 4GB* |
| DIMM Configurations | 4GB*(2 X 2GB) 3GB (1 x 2GB, 1 x 1GB) 2GB (1 x 2GB) 2GB (2 x 1GB) 1GB (1 x 1GB) 1GB (2 x 512MB) |



Primary Storage Options

| Size, type, speed | E5500 | E5400 |
|---|-------|-------|
| 80GB* SATA 5400 RPM | x | x |
| 80GB* SATA 7200 RPM | x | x |
| 160GB* SATA 5400 RPM | x | x |
| 160GB* SATA 7200 RPM | x | x |
| 250GB* SATA 7200 RPM | x | x |
| 120GB* SATA Full Disk Encryption 5400 RPM | x | x |

Specialty Storage Options

Full Disk Encryption hard drives provide hardware encrypted data protection which can be activated within a few seconds centrally and can be much safer than software based encryption.



Removable Storage Options

| Optical Drive in Module Bay | | E5500, E5400 |
|------------------------------------|--|--|
| DVD+/-RW | | 8x SATA Roxio® & Cyberlink PowerDVD™ software |
| DVD-ROM | | 8x SATA Cyberlink PowerDVD™ software |
| Combo Drive CD-RW | | 24x SATA Cyberlink PowerDVD™ software |

Expandability – external slots and ports

| Expansion Slots | | E5500, E5400 |
|-------------------------------|---|---------------------|
| Dell 3-in-1 Media Card Reader | Card supported: SD, SD HC, MMC, | All |
| PC Card | Ricoh R5C847 Controller Supports one Type I or Type II card 3.3V and 5V 1.5V Express Card with adapter 80 pin connector size Maximum data width: PCMCIA - 16 bits Card Bus - 32 bits | Standard |



| Ports and Connectors | | E5500, E5400 |
|-----------------------------|--|---------------------|
| USB 2.0 | 4 Total 4-pin USB 2.0 compliant connectors Total includes one with powered USB and one with eSATA functionality | All |
| IEEE 1394 | IEEE 1394a 4-pin connector | All |
| Video | VGA S-video | All |
| Network Adapter | RJ-45 network adapter | All |
| Modem | RJ-11 modem connector Optional, must be ordered when you configure the system | All |
| Audio | Two channel high definition audio IDT 92HD71B Controller Stereo conversion: 24-bit (analog-to-digital and digital-to-analog) Interfaces: Internal - high-definition audio codec External - microphone-in connector and stereo headphones/speakers connector Speakers: two 1-watt, 4-ohm speakers Internal speaker amplifier: 1 watt per channel, 4 ohms Internal microphone: single digital microphone Volume control buttons | All |
| | | |



Wi-Fi (WLAN)

Dell Wireless 1397 (802.11b/g)

| | |
|---|--|
| Host interface | PCI Express™ Half Mini-Card |
| Network standard | IEEE 802.11b and 802.11g |
| Wi-Fi Alliance Certifications | 802.11b, 802.11g, WPA, WPA2, WMM |
| Operating Frequency Bands | 2.4 GHz |
| Dual Diversity Antenna Switching | Dual diversity antenna switching for systems designed with main and auxiliary antennas |
| Data Rate | 802.11g - Up to 54 Mbps* / 802.11b - Up to 11 Mbps |
| Typical Range Indoor | 802.11g: 100 ft* (30 m) @ 54 Mbps*; 200 ft (60 m) @ 18 Mbps |
| Typical Range Outdoor | 802.11b: 260 ft* (80 m) @ 11 Mbps*; 410 ft (125 m) @ 1 Mbps 802.11g: 200 ft* (60 m) @ 54 Mbps*; 490 ft (150 m) @ 18 Mbps 802.11b: 650 ft* (200 m) @ 11 Mbps*; 1300 ft (400 m) @ 1 Mbps |
| Receive Sensitivity | 802.11g: -73 dBm @ 54 Mbps*; -86 dBm @ 18 Mbps 802.11b: -88 dBm @ 11 Mbps*; -95 dBm @ 1 Mbps |
| Power Consumption | TX Average - 759 mW, RX Average - 505 mW |
| Security Authentication EAP Methods | Open, Shared, WPA, WPA-PSK, WPA2, WPA2-PSK, CCKM MD5, LEAP, EAP-FAST, EAP-TLS, EAP-TTLS (PAP, CHAP, MD5, MS-CHAP, MS-CHAPv2), PEAP (TLS, MS-CHAPv2, GTC) |
| Single Sign On | Open, Shared, MD5, LEAP, EAP-FAST, EAP-TLS, EAP-TTLS (PAP, CHAP, MD5, MS-CHAP, MS-CHAPv2), PEAP (TLS, MS-CHAPv2, GTC), Smart Cards |
| Encryption Cisco® Compatible Extensions | WEP (64 bit/128 bit), CKIP, TKIP, AES-CCMP Version 4 |
| Client Utility | Wireless profile and security management, site monitor, link status, adapter configuration and diagnostics |
| Software Support | Microsoft® WHQL certified for Windows® XP and Windows Vista® |
| Radio On/Off | Hardware and software on/off disables transmit and receive to comply with aviation in-flight restrictions |
| LED output | Wireless enable and wireless activity. Compatible with Dell Wi-Fi Catcher™ to indicate via LED presence of Wi-Fi |
| Humidity | Up to 95% |
| Temperature | Operational 0 to 75C; Storage -40 to 80C |
| Roaming | Seamless roaming between 802.11b and 802.11b/g access points |



Dell Wireless 1510 (802.11 a/b/g draft n 2x2)

| | |
|-------------------------------------|--|
| Host interface | PCI Express™ Half Mini-Card |
| Network standard | IEEE 802.11a, 802.11b, 802.11g, and 802.11 Draft n |
| Wi-Fi Alliance Certifications | 802.11a, 802.11b, 802.11g, WPA, WPA2, WMM |
| Operating Frequency Bands | 2.4 GHz (802.11b/g/n) and 5 GHz (802.11a/Draft n) |
| Dual Diversity Antenna Switching | Dual diversity antenna switching for systems designed with main and auxiliary antennas 2x2 MIMO operation when in 802.11n mode with 2x2 or greater Access Point |
| Data Rate | 802.11 Draft n - Up to 300 Mbps*; 802.11a/g - Up to 54 Mbps 802.11b - Up to 11 Mbps |
| Typical Range Indoor | 802.11n: 25 ft* (7 m) @ 300 Mbps*; 100 ft *(30 m) @ 108 Mbps* 802.11a: 75 ft* (23 m) @ 54 Mbps*; 160 ft (50 m) @ 18 Mbps 802.11g: 100 ft* (30 m) @ 54 Mbps*; 200 ft (60 m) @ 18 Mbps |
| Typical Range Outdoor | 802.11b: 260 ft* (80 m) @ 11 Mbps*; 410 ft (125 m) @ 1 Mbps 802.11n: 60 ft* (18 m) @ 300 Mbps*; 225 ft (68 m) @ 108 Mbps 802.11a: 160 ft* (50 m) @ 54 Mbps*; 460 ft (140 m) @ 18 Mbps 802.11g: 200 ft* (60 m) @ 54 Mbps*; 490 ft (150 m) @ 18 Mbps 802.11b: 650 ft* (200 m) @ 11 Mbps*; 1300 ft (400 m) @ 1 Mbps |
| Receive Sensitivity | 802.11 Draft n: -66 dBm @ 300 Mbps*; -75dBm @ 108 Mbps 802.11g: -73 dBm @ 54 Mbp*s; -86 dBm @ 18 Mbps 802.11b: -88 dBm @ 11 Mbps*; -95 dBm @ 1 Mbps 802.11a: -72 dBm @ 54 Mbps*; -86 dBm @ 18 Mbps |
| Power Consumption | TX Peak - 2056 mW, RX Peak - 2059 mW |
| Security Authentication EAP Methods | Open, Shared, WPA, WPA-PSK, WPA2, WPA2-PSK, CCKM MD5, LEAP, EAP-FAST, EAP-TLS, EAP-TTLS (PAP, CHAP, MD5, MS-CHAP, MS-CHAPv2), PEAP (TLS, MS-CHAPv2, GTC) |
| Single Sign On | Open, Shared, MD5, LEAP, EAP-FAST, EAP-TLS, EAP-TTLS (PAP, CHAP, MD5, MS-CHAP, MS-CHAPv2), PEAP (TLS, MS-CHAPv2, GTC), Smart Cards WEP (64 bit/128 bit), CKIP, TKIP, AES-CCMP Version 4 |
| Client Utility | Wireless profile and security management, site monitor, link status, adapter configuration and diagnostics |
| Software Support | Microsoft® WHQL certified for Windows® XP and Windows Vista® |
| Radio On/Off | Hardware and software on/off disables transmit and receive to comply with aviation in-flight restrictions |
| LED output | Wireless enable and wireless activity. Compatible with Dell Wi-Fi Catcher™ to indicate via LED presence of Wi-Fi |
| Humidity | Up to 95% |
| Temperature | Operational 0 to 75C; Storage -40 to 80C |
| Roaming | Seamless roaming between 802.11a, 802.11b, 802.11b/g, and 802.11n access points |



Wireless Communications -Wi-Fi (WLAN)

Intel® WiFi Link 5100 [802.11a/b/g/draft n (1x2)]

| | |
|----------------------------------|--|
| Host interface | Mini Card form factor, based on PCIe electrical interface |
| Network standard | IEEE 802.11a/b/g/Draft-N |
| Wi-Fi Alliance Certifications | Wi-Fi Certified for 802.11a, 802.11b, 802.11g, WMM, WPA, and WPA2 (Wi-Fi Alliance Draft-N1 and 802.11n certifications expected when available) |
| Operating Frequency Bands | 2.4 GHz and 5.0 GHz |
| Dual Diversity Antenna Switching | Support for up to two antennas helps enable better wireless reception at the same distance when compared to 802.11a/b/g solutions |
| Data Rate | 802.11 Draft n - Up to 300 Mbps* 802.11a/g - Up to 54 Mbps* 802.11b - Up to 11 Mbps* |
| Power Consumption | Optimized power modes (sleep states) help reduce power consumption during periods of inactivity |
| Authentication | WPA and WPA2, 802.1X, LEAP, EAP-TLS, PEAP-TLS, and PEAP-MSCHAPv |
| Protocols Encryption | CKIP, TKIP, 64-bit and 128-bit WEP (for 802.11a/b/g), AES-CCMP (for 802.11a/b/g/Draft-N) |
| Product Safety | UL, C-UL, CB (IEC 60950) |
| Client Utility | Intel® PROSet/Wireless Software v12.0 |
| Software Support | Microsoft® WHQL certified for Windows® XP and Windows Vista®; Linux® |
| Radio On/Off | Supported in both hardware and software |
| LED output | Single WLAN-LED (as per Mini Card specification) |
| Humidity Non-Operating | 50% to 90% RH non-condensing (at temperatures of 25° C to 35° C) |
| Temperature Operating | 0 to +80° C |
| Roaming | Supports seamless roaming between respective access points (802.11b, 802.11g, 802.11a/b/g, and 802.11a/b/g/Draft-N) |



Wireless Communications -Wi-Fi (WLAN)

Intel WiFi Link 5300 [802.11a/b/g/Draft n (3x3)]

| | |
|----------------------------------|--|
| Host interface | Mini Card form factor, based on PCIe electrical interface |
| Network standard | IEEE 802.11a/b/g/Draft-N |
| Wi-Fi Alliance Certifications | Wi-Fi Certified for 802.11a, 802.11b, 802.11g, WMM, WPA, and WPA2 (Wi-Fi Alliance Draft-N1 and 802.11n certifications expected when available) |
| Operating Frequency Bands | 2.4 GHz and 5.0 GHz |
| Dual Diversity Antenna Switching | Support for up to three antennas help enable better wireless reception at the same distance when compared to 802.11a/b/g solutions |
| Data Rate | Up to 450 Mbps* |
| Power Consumption | Optimized power modes (sleep states) help reduce power consumption during periods of inactivity |
| Authentication | WPA and WPA2, 802.1X, LEAP, EAP-TLS, PEAP-TLS, and PEAP-MSCHAPv |
| Protocols Encryption | CKIP, TKIP, 64-bit and 128-bit WEP (for 802.11a/b/g), AES-CCMP (for 802.11a/b/g/Draft-N) |
| Product Safety | UL, C-UL, CB (IEC 60950) |
| Client Utility | Intel® PROSet/Wireless Software v12.0 |
| Software Support | Microsoft® WHQL certified for Windows® XP and Windows Vista®; Linux® |
| Radio On/Off | Supported in both hardware and software |
| LED output | Single WLAN-LED (as per Mini Card specification) |
| Humidity Non-Operating | 50% to 90% RH non-condensing (at temperatures of 25° C to 35° C) |
| Temperature Operating | 0 to +80° C |
| Roaming | Supports seamless roaming between respective access points (802.11b, 802.11g, 802.11a/b/g, and 802.11a/b/g/Draft-N) |



Wireless Communications - Mobile Broadband* (Available on E5400 only)

Dell Wireless 5530 (Tri-band HSDPA 7.2/HSUPA 2.0 & GPS)

| Carrier | AT&T (U.S.) | Vodafone (EMEA) | TeliaSonera (EMEA) | Telstra(EMEA) |
|------------------|--|--|--|--|
| Network | HSPA 3G | HSPA 3G | HSPA 3G | HSPA 3G |
| Speed (Downlink) | 700 Kbps* – 1.7 Mbps* | < 3.6 Mbps* | < 3.6 Mbps* | < 7.2 Mbps* |
| Speed (Uplink) | 500 Kbps* – 1.2 Mbps* | < 300 Kbps* | < 300 Kbps* | < 300 Kbps* |
| Fallback Network | EDGE | GPRS | GPRS | GPRS |
| Fallback Speed | 70 - 135 Kbps* | UMTS 384 Kbps* GPRS 45 Kbps* | UMTS 384 Kbps* GPRS 45 Kbps* | UMTS 384 Kbps* GPRS 45 Kbps* |
| Frequency Bands | 850/1900/2100 HSPA 850/900/1800/1900 EDGE | 850/1900/2100 HSPA 850/900/1800/1900 EDGE | 850/1900/2100 HSPA 850/900/1800/1900 EDGE | 850/1900/2100 HSPA 850/900/1800/1900 EDGE |
| SIM | Yes | Yes | Yes | Yes |



Wireless Communications - Mobile Broadband* (Available on E5400 only)

Dell Wireless 5720 (EV-DO Rev A & GPS)

| Carrier | Verizon Wireless (U.S.) | Sprint (U.S.) | TELUS (U.S.) |
|------------------|-------------------------|-----------------------|---|
| Network | EV-DO Rev A | EV-DO Rev A | EV-DO Rev A |
| Speed (Downlink) | 600 Kbps* - 1.4 Mbps* | 600 Kbps* - 1.4 Mbps* | 600 Kbps* - 1.4 Mbps* |
| Speed (Uplink) | 500 - 800 Kbps* | 350 - 500 Kbps* | 350 - 500 Kbps* |
| Fallback Network | CDMA 1xRTT | CDMA 1xRTT | EV-DO Rev 0 CDMA 1xRTT |
| Fallback Speed | 60 - 80 Kbps* | 60 - 80 Kbps* | 400 - 700Kbps* (Rev 0) 60 - 70 Kbps* (1xRTT) |
| Frequency Bands | 850/1900 | 1900 | 1900 EVDO 800/1900 1xRTT |
| SIM | No | No | No |



Wireless Communications - Bluetooth

Dell Wireless 370 Bluetooth 2.1

| | |
|------------------------------|---|
| Manufacturer | Broadcom® |
| Wireless PAN Standard | BT2.0 (Windows Vista) /BT2.1 (Windows XP) |
| Form Factor | Mini Card |
| Data Rates | Up to 3 Mbps* |
| Frequency Band | 2.4GHz |
| Range | Up to 7 m (23 ft)* |
| Bluetooth Profiles Supported | Includes Streaming Stereo Quality Audio (A2DP), File transfer (FTP/OBEX), Dial-up Networking (DUN), Mice/Keyboards (HID), Printing (BPP), Digital Image Management (transfer, print, remote camera operation) (BIP), Fax (FAX), Headset (HSP) and more. |
| Data Encryption | 128-bit encryption |
| Output Power | Power class 2; Max 4 dBm (2.4 mW) |
| Receive Sensitivity | -88 dBm |
| Temperature | Operational 0 to 75C; Storage -40 to 80C |
| Humidity | Up to 95% |
| Software Compatibility | Microsoft Windows Vista and XP Support |



Wired Communications

Network Adapter (NIC)

| | |
|---|---|
| Broadcom 5756M Gigabit Ethernet Controller | Integrated on system board |
| External connector type | RJ-45 |
| Data Rates | 10/100/1000 Mbps |
| Controller bus architecture | PCI-e V1.1x1 |
| Power consumption (full operation per data rate connection speed) | 1000 Mbps*: 1470mW 100 Mbps*: 780mW 10 Mbps*: 890mW |
| Power consumption (standby operation) | No Link (low power mode): 16mW (TPM disabled) No Link (w/ WOL): 204mW 10 Mbps* Idle (w/ WOL): 253mW 100 Mbps* Idle (w/ WOL): 434mW |
| IEEE standards compliance | 802.3, 802.3ab, 802.3u |
| Boot ROM Support | PXE, RPL |
| Network Transfer Rate | Full duplex at 10, 100, or 1000 Mbps* and half duplex at 10 or 100 Mbps*. |
| Operating Temperature | -20° C to 70° C (-4° F to 158° F) |
| Operating Humidity | 20% to 80% (non-condensing) |
| Operating System Driver support | Windows Vista® 32/64bit, DOS, XP, |
| Manageability | WOL, PXE |
| Management Capabilities Alerting | ASF 2.0 |

Modem (Optional)

| | |
|------------------------------------|---------------|
| V.92 Data/Fax Controllerless Modem | 100% attached |
| Bus | HD Audio |
| External Connector | RJ-11 |



Wired Communications

Network Adapter (NIC)

| | |
|---|--|
| Broadcom 5761E Gigabit Ethernet Controller | Integrated on system board |
| External connector type | RJ-45 |
| Data Rates | 10/100/1000 Mbps |
| Controller bus architecture | PCI-e V1.1x1 |
| Power consumption (full operation per data rate connection speed) | 1000 Mbps*: 924mW 100 Mbps*: 651mW 10 Mbps*: 737mW |
| Power consumption (standby operation) | No Link (low power mode): 49mW No Link (w/ WOL): 372mW 10 Mbps* Idle (w/ WOL): 305mW 100 Mbps* Idle (w/ WOL): 279mW |
| IEEE standards compliance | 802.3, 802.3ab, 802.3u |
| Boot ROM Support | PXE, RPL |
| Network Transfer Rate | Full duplex at 10, 100, or 1000 Mbps* and half duplex at 10 or 100 Mbps*. |
| Operating Temperature | -20° C to 70° C (-4° F to 158° F) |
| Operating Humidity | 20% to 80% (non-condensing) |
| Operating System Driver support | Windows Vista® 32/64bit, DOS, XP, |
| Manageability | WOL, PXE, DASH 2.0 |
| Management Capabilities Alerting | ASF 2.0 |

Modem (Optional)

| | |
|------------------------------------|---------------|
| V.92 Data/Fax Controllerless Modem | 100% attached |
| Bus | HD Audio |
| External Connector | RJ-11 |



Security

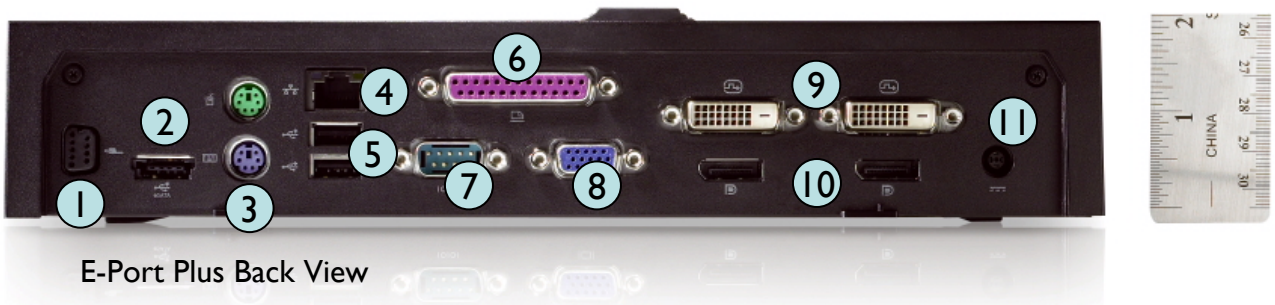
| Security Hardware | | E5500, E5400 |
|-------------------------------|---|---------------------|
| Fingerprint Reader | UPEK TCS3 TouchStrip™ strip sensor with CMOS active capacitive pixel-sensing technology | Optional on both |
| Trusted Platform Module (TPM) | TPM 1.2* | Standard on both |
| Smart Card Reader | Through PC card | Optional on both |



E Family Docking

E-Port Plus

| | |
|-----------------------|--|
| Key Features | Dual Digital Monitor capabilities along with legacy ports. The non-compromise station designed for enhanced usability at desk. Supports hot docking and undocking. |
| Dimension (h x d x w) | 2.11" x 6.69" x 11.33" (53.7 x 170 x 288 mm) |
| Weight | 2.3 lb (1.05kg) |
| Power Supply | 130W External AC Adapter (Dell Latitude™) 210W External AC Adapter (Dell Precision™) |
| Video Ports | VGA, 2 x Display Ports, 2 x DVI-D |
| Legacy Ports | Serial, Parallel, 2 x PS/2 |
| Ports | 6 x USB, Powered eSATA (shared with 1 USB), RJ-45, Audio and Mic, Lock Slot, E-Monitor Stand Connector |



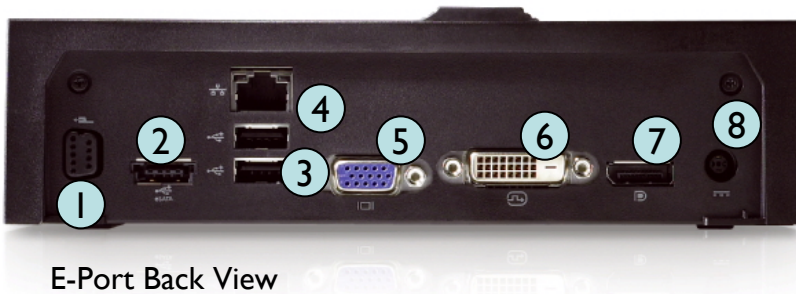
- (1) E-Monitor Stand Connector
- (2) eSATA
- (3) PS/2
- (4) Network Connector (RJ-45)
- (5) USB x 2
- (6) Parallel Port
- (7) Serial Port
- (8) VGA
- (9) DVI x 2
- (10) Display Port x 2
- (11) AC Adapter Connector



E Family Docking

E-Port

| | |
|-----------------------|---|
| Key Features | A space-saving port replicator suitable for home and office environment which enables connection to your desk peripherals. Supports hot docking and undocking . |
| Dimension (h x d x w) | 2.11" x 6.69" x 7.87" (53.7 x 170 x 200 mm) |
| Weight | 1.72 lb (0.78kg) |
| Power Supply | 130W External AC Adapter (Dell Latitude™) 210W External AC Adapter (Dell Precision™) |
| Video Ports | VGA, Display Port, DVI-D |
| Ports | 6 x USB, Powered eSATA (shared with 1 USB), RJ-45, Audio and Mic, Lock Slot, E-Monitor Stand Connector |



E-Port Back View

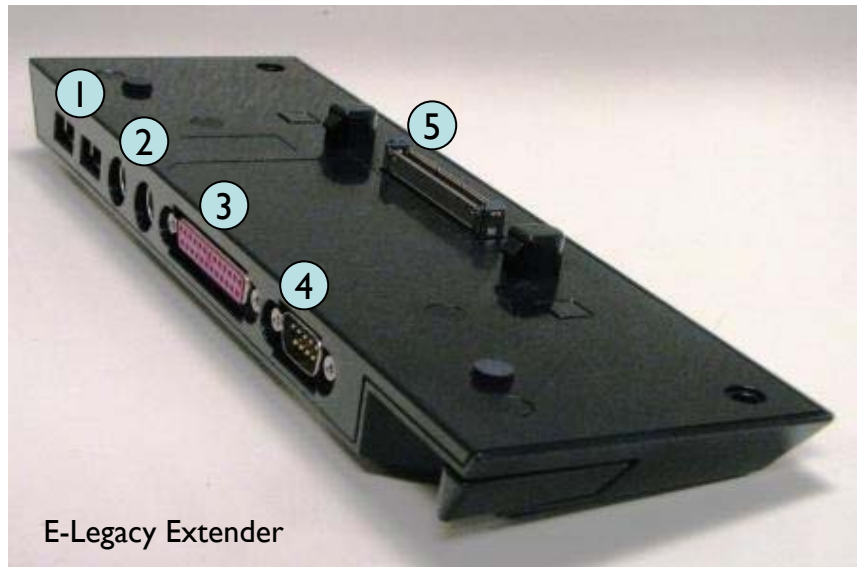
- | | |
|-------------------------------|--------------------------|
| (1) E-Monitor Stand Connector | (5) VGA |
| (2) eSATA | (6) DVI |
| (3) USB x 2 | (7) Display Port |
| (4) Network Connector (RJ-45) | (8) AC Adapter Connector |



E Family Docking

E-Legacy Extender

| | |
|-----------------------|--|
| Key Features | A lightweight (0.45lb,0.2kg) adapter that can be attached to the bottom of the notebooks adding parallel, serial, PS/2 and 2 USB connectors. |
| Dimension (h x d x w) | 0.78" x 3.12" x 9.59" (19.9 x 79.3 x 243.5 mm) |
| Weight | 0.45 lb (0.21 kg) |
| Power Supply | N/A (attached to the bottom of the system through docking connector) |
| Ports | Serial, Parallel, 2 x PS/2, 2 x USB |



- (1) 2 x USB
- (2) 2 x PS/2
- (3) Parallel Port
- (4) Serial Port
- (5) Docking Connector

E-Legacy Extender



Graphics Controller Options

| | Intel GMA 4500MHD Integrated Graphics |
|--|---|
| Availability by Model | E5500, E5400 |
| Graphics Memory | Windows Vista: up to 783MB shared with 2GB of system memory* Windows XP: up to 1GB shared with 2GB of system memory* |
| Bus Type | PCIe X16 |
| Memory Interface | N/A |
| Clock Speeds | 533MHz graphics core |
| Estimated Maximum Power Consumption | 12W |
| Display Support | VGA + DisplayPort Single-link DVI (requires optional E-Port or E-Port Plus) |
| Maximum Color Depth | 32bit (16.7 million) |
| Maximum Vertical Refresh Rate | Up to 85Hz depending on resolution |
| Operating Systems Graphics/ Video API Support | DirectX 10, OpenGL 1.3 |
| Supported Resolutions and Max Refresh Rates (Hz) (Note: Analog and/or digital) | Max Digital: 2560x1600/32bpp @60Hz Analog: 1600x1200/32bpp @ 85Hz Min: 640x480/8bpp @ 60Hz |



Display Options

| E5500 Display Options | 15.4" WXGA (1280x800) Display | 15.4" WXGA+ (1440x900) Display with TrueLife™ (Wide View) | 15.4" WXGA+ (1440x900) Display (Wide View) |
|---|--|--|--|
| Type | CCFL Anti-Glare | CCFL TrueLife | CCFL Anti-Glare |
| Luminance/Brightness (typical) | 220 nits | 250 nits | 250 nits |
| Dimensions | | | |
| Height | 344.5mm (maximum) | 344.5mm (maximum) | 344.5mm (maximum) |
| Width | 222.5mm (maximum) | 222.5mm (maximum) | 222.5mm (maximum) |
| Diagonal | 390.6mm (15.4 in) | 390.6mm (15.4 in) | 390.6mm (15.4 in) |
| Native Resolution | 1280 x 800 | 1440 x 900 | 1440 x 900 |
| Megapixels | 1.0 | 1.3 | 1.3 |
| Pixels per Inch (PPI) | 98 | 110 | 110 |
| Contrast Ratio | 400:1 (typical) | 400:1 (typical) | 400:1 (typical) |
| Response Time (typical) | 25 msec rise/fall (maximum) | 25 msec rise/fall (maximum) | 25 msec rise/fall (maximum) |
| Refresh Rate | 60 Hz | 60 Hz | 60 Hz |
| Horizontal Viewing Angle (Typical) | +/- 40 degrees | +/- 55 degrees | +/- 55 degrees |
| Vertical Viewing Angle (Typical) | +15/-30 degrees | +/- 45 degrees | +/- 45 degrees |
| Pixel Pitch | 0.2588 mm | 0.2304 mm | 0.2304 mm |
| Power Consumption (typical) | 7.0 W (maximum at 12v DC input to inverter, inverter set to 100% duty cycle) | 7.0 W (maximum at 12v DC input to inverter, inverter set to 100% duty cycle) | 7.0 W (maximum at 12v DC input to inverter, inverter set to 100% duty cycle) |



Display Options

| E5400 Display Options | 14.1" WXGA (1280x800) Display | 14.1" UltraSharp™ WXGA+ (1440x900) Display |
|---|--|--|
| Type | CCFL Anti-Glare | CCFL Anti-Glare |
| Luminance/Brightness (typical) | 220 nits | 220 nits |
| Dimensions | | |
| Height | 206mm (maximum) | 206mm (maximum) |
| Width | 320mm (maximum) | 320mm (maximum) |
| Diagonal | 357.1 mm (14.1 in) | 357.1 mm (14.1 in) |
| Native Resolution | 1280 x 800 | 1440 x 900 |
| Megapixels | 1.0 | 1.3 |
| Pixels per Inch (PPI) | 109 | 120 |
| Contrast Ratio | 400:1 (Typical) | 400:1 (Typical) |
| Response Time (typical) | 25 msec rise/fall (maximum) | 25 msec rise/fall (maximum) |
| Refresh Rate | 60 Hz | 60 Hz |
| Horizontal Viewing Angle (Typical) | +/- 40 degrees | +/- 40 degrees |
| Vertical Viewing Angle (Typical) | +15/-30 degrees | +15/-30 degrees |
| Pixel Pitch | 0.2373 mm | 0.2109 mm |
| Power Consumption (typical) | 6.2 W (maximum at 12v DC input to inverter, inverter set to 100% duty cycle) | 6.2 W (maximum at 12v DC input to inverter, inverter set to 100% duty cycle) |



Battery Options

| | Primary 4-cell | Primary 6-cell (low cost) | Primary 6-cell | Primary 9-cell |
|---|--|--|--|--|
| Availability by Model | E5500, E5400 | E5500, E5400 | E5500, E5400 | E5500, E5400 |
| Battery Capacity | 37Whr | 48Whr | 56Whr | 85Whr |
| Cell Capacity | 2.6Ahr | 2.2Ahr | 2.6Ahr | 2.6Ahr |
| Voltage | 14.8 VDC | 10.8 VDC | 11.1 VDC | 11.1 VDC |
| LED Charge & Health Gauge | Yes | Yes | Yes | Yes |
| Weight (lbs) | 0.55 | 0.75 | 0.72 | 1.07 |
| Weight (kg) | 0.25 | 0.34 | 0.33 | 0.49 |
| Dimensions (inches)) | 8.11 x 2.12 x 0.78 | 8.11 x 2.12 x 0.78 | 8.11 x 2.12 x 0.78 | 8.19 x 2.99x 0.83 |
| Dimensions (mm) | 206 x 54 x 19.8 | 206 x 54 x 19.8 | 206 x 54 x 19.8 | 224 x 76 x 21.1 |
| ExpressCharge Capable | Yes | Yes | Yes | Yes |
| Charge Time (with ExpressCharge & 90W adapter when the computer is off) | - approximately 1 hour to 80% capacity - approximately 2 hours to 100% capacity | - approximately 1 hour to 80% capacity - approximately 2 hours to 100% capacity | - approximately 1 hour to 80% capacity - approximately 2 hours to 100% capacity | - approximately 1 hour to 80% capacity - approximately 2 hours to 100% capacity |
| Temperature range: Operating | 0° to 35°C 32° to 95°F | 0° to 35°C 32° to 95°F | 0° to 35°C 32° to 95°F | 0° to 35°C 32° to 95°F |
| Storage | -40° to 60°C -40° to 140°F | -40° to 60°C -40° to 140°F | -40° to 60°C -40° to 140°F | -40° to 60°C -40° to 140°F |



AC Adapters

| Compatibility Matrix | | E6500 E6400, E6400 ATG | E5400 E5500 | E4300 | E4200 | E-Port Plus E-Port |
|----------------------|------------------------------|------------------------------|----------------------------|------------------------|-----------|----------------------------|
| D-Family Adapters | 45W | Not Supported ¹ | Not Supported ¹ | Supported ² | Standard | Not Supported ¹ |
| | D65W | Supported ² | Supported ² | Supported | Supported | Not Supported ¹ |
| | D90W | Supported | Standard | Supported | Supported | Not Supported ¹ |
| Auto-Air | Dell Slim 65W Auto/Air/AC | Supported ² | Supported ² | Supported | Supported | Not Supported ¹ |
| E-Family Adapters | E65W | Supported ² | Supported ² | Standard | Supported | Not Supported ¹ |
| | E90W | Standard | Supported | Supported | Supported | Not Supported ¹ |
| | E130W | Supported | Supported | Supported | Supported | Standard |

¹ BIOS will notify customer to change adapter or undock.

² Battery charging may be slower when system is powered on.

| Adapter Specifications | 65w Travel | 65w | 90w | 130w |
|---------------------------------|--|--|--|---------------------------------------|
| Input voltage | AC: 100 to 240 VAC DC: 11 to 16 VDC | 90 to 264 VAC | 100-240 VAC | 100-240VAC |
| Input current (max) | AC: DC: | 1.7A | 1.5A | 1.8A |
| Input frequency | AC: 50 to 60 Hz DC: 8A | 47 to 63 Hz | 50 to 60 Hz | 50 to 60 Hz |
| Output current | 3.34 A (continuous) | 4.34 A Max at 4 second pulse 3.34 A (continuous) | 5.62 A (max at 4 second pulse) 4.62 A (continuous) | 6.7A Continuous (7.7A peak for 4s) |
| Rated output voltage | 19.5 VDC | 19.5 VDC | 19.5 VDC | 19.5 VDC |
| Weight (lbs) ³ | 0.72 | 0.64 | .76 | 1.14 |
| Weight (kg) ³ | 0.33 | 0.29 | 0.35 | 0.52 |
| Dimensions (inches) | 0.63 x 2.6 x 5.0 | 0.6 x 2.6 x 5.0 | 0.6 x 2.8 x 5.8 | 1.0 x 3.0 x 6.1 |
| Dimensions (mm) | 16 x 65 x 127 | 16 x 66 x 127 | 16 x 70 x 147 | 25 x 76 x 155 |
| Temperature range: Operating | 0° to 35°C 32° to 95°F | 0° to 35°C 32° to 95°F | 0° to 35°C 32° to 95°F | 0° to 35°C 32° to 95°F |
| Storage | -40° to 65°C -40° to 149°F | -40° to 65°C -40° to 149°F | -40° to 65°C -40° to 149°F | -40° to 65°C -40° to 149°F |

³ 3-pin AC Adapter weight



Keyboard

| | |
|----------------|---|
| Number of keys | 83 (U.S. and Canada); 84 (Europe); 87 (Japan) |
| Layout | QWERTY/AZERTY/Kanji |
| Size | full sized (19-mm key pitch) |
| | |

Touch Pad

| | |
|-------------------------|--|
| X/Y position resolution | 240dpi |
| Size | Width: 73.0-mm (2.9-inch) sensor-active area Height: 42.9-mm (1.7-inch) rectangle |



Environmental and operating conditions

| | |
|--|--|
| Temperature Range | Operating 0° to 35°C (32° to 95°F) Storage -40° to 65°C (-40° to 149°F) |
| Relative humidity (maximum) | Operating 10% to 90% (noncondensing) Storage 5% to 95% (noncondensing) |
| Maximum vibration (using a random vibration spectrum that simulates user environment) | Operating 0.66 GRMS Storage 1.3 GRMS |
| Maximum shock (Measured with hard drive in operating status and a 2-ms half-sine pulse for operating specification. Also measured with hard drive in head-parked position and a 2-ms halfsine pulse for storage specification) | Operating 143 G Storage 163 G |
| Altitude (maximum) | Operating -15.2 to 3048 m (-50 to 10,000 ft) Storage -15.2 to 3048 m (-50 to 10,000 ft) |



Important Information

All Day Computing/Battery Life: Results based on Dell lab testing. Varies by configuration, operating conditions and other factors. Maximum battery capacity decreases with time and use.

Battery Charge Times: The 4-cell and 6-cell batteries typically have greater than 80% charge after about an hour of charging, and fully charge in about 2 hours with ExpressCharge and 90W adapter when the system is off.

Graphics & System Memory: Significant system memory may be used to support graphics, depending on system memory size and other factors.

Notebooks with 4GB or Greater System Memory Capability: Up to 1GB may not be available with 32-bit operating systems due to system resource requirements.

Hard Drives: For writeable storage devices, GB = 1 billion bytes and TB = 1 trillion bytes; actual capacity varies with preloaded material and operating environment and will be less.

Mobile Broadband: Subject to wireless provider's broadband subscription and coverage area; additional charges apply. (Available on E5400 only)

Mobile Broadband average download speeds: For comparative purposes only. Actual speed varies and will be less.

TPM 1.2: Not available in all regions

E5500 Weight: Starting weight with 4-cell, 15.4" LED, integrated graphics, and Travel Lite module is 6.17lbs/2.80kg. Weight varies with configuration and manufacturing variability.

E5400 Weight: Starting weight with 4-cell, 14.1" LED, integrated graphics, and Travel Lite module is 5.42lbs/2.46kg. Weight varies with configuration and manufacturing variability.

Limited Hardware Warranty: For a copy of limited warranty, write Dell USA LP, Attn: Warranties, One Dell Way, Round Rock, TX 78682 or visit www.dell.com/warranty.

CompleteCare Accidental Damage Service: CompleteCare service excludes theft, loss, and damage due to fire, flood or other acts of nature, or intentional damage. Customer may be required to return unit to Dell. For complete details, visit www.dell.com/servicedescriptions.

Genuine Windows Vista® Business Bonus: The Genuine Windows Vista® Business Bonus come with Genuine Windows® XP Professional preinstalled along with media and technical support for both Genuine Windows® XP and Genuine Windows Vista® so you may transition to Genuine Windows Vista® when you're ready.

Dell Services: Availability of Dell Services vary by region. For more information, please visit www.dell.com/servicedescriptions.

Wireless Connectivity: Where wireless access is available. Additional wireless charges may apply in some locations. Wireless Range: Range may vary due number of users, interference, and other factors

Copyright 2008 Dell Inc. All rights reserved. Intel, and Core are trademarks or registered trademarks of Intel Corporation or its subsidiaries in the United States of America and other countries. Microsoft, Windows, and Windows Vista are registered trademarks of Microsoft Corporation. Other trademarks or trade names may be used in this document to refer to either the entities claiming the marks and names or their products. Dell disclaims proprietary interest in the marks and names of others. Reproduction in any manner whatsoever without express written permission from Dell Inc. is strictly forbidden.

