



## DATA SHEET

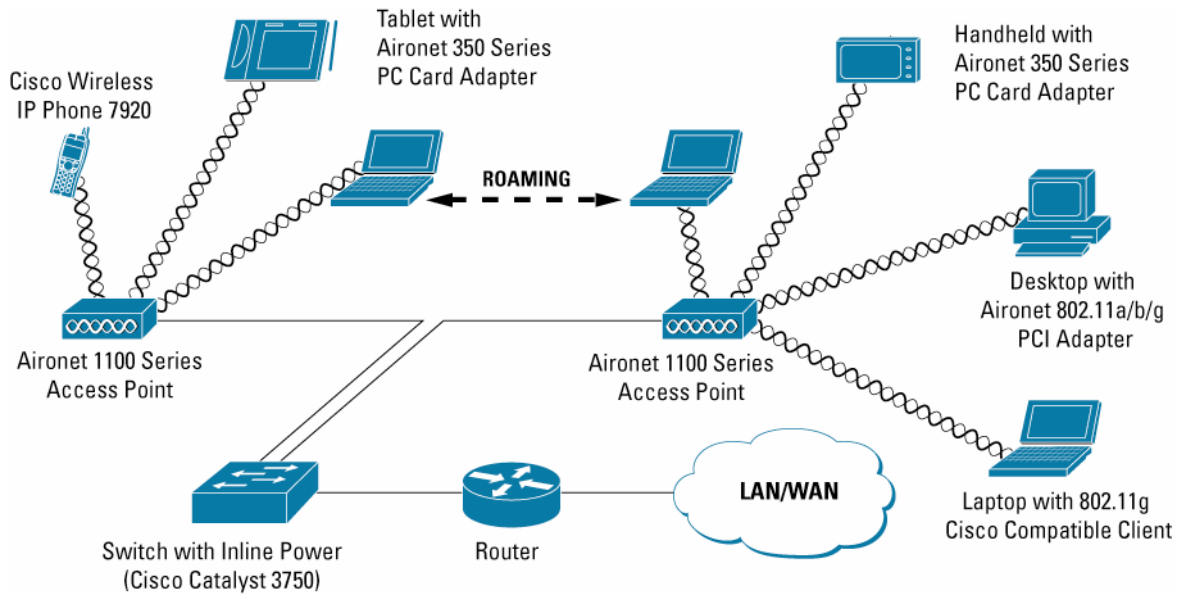
# CISCO AIRONET 1100 SERIES ACCESS POINT



The Cisco Aironet® 1100 Series Access Point provides a high-speed, secure, affordable, and easy-to-use wireless LAN solution that combines the freedom and flexibility of wireless networking with the features and services required in enterprise networks (Figure 1). The Cisco Aironet 1100 Series supports a single radio and is available in an IEEE 802.11g version or IEEE 802.11b version. The IEEE 802.11b version is field upgradable to 802.11g.

The access point offers flexibility and investment protection for wireless networks. With the IEEE 802.11g version, users can enjoy up to 54 Mbps data rates while maintaining full backward compatibility with legacy 802.11b devices. Administrators can configure the access point to support both 802.11g and legacy 802.11b clients for investment protection or, for higher performance, it may be configured to support only 802.11g clients. The Cisco Wireless Security Suite provides the strongest enterprise security solution available while the Cisco IOS® Software operating system delivers enterprise-class services with a familiar user interface. The Cisco Aironet 1100 Series also features integrated diversity dipole antennas and an innovative mounting system for easy installation and reliable coverage in a variety of locations and orientations.

**Figure 1.** An access point either is the center point in an all-wireless network or serves as a connection point between a wired and wireless network. Multiple access points can be placed throughout a facility to give users with 802.11b or 802.11g wireless LAN client adapters the ability to roam freely throughout an extended area while maintaining uninterrupted access to all network resources.

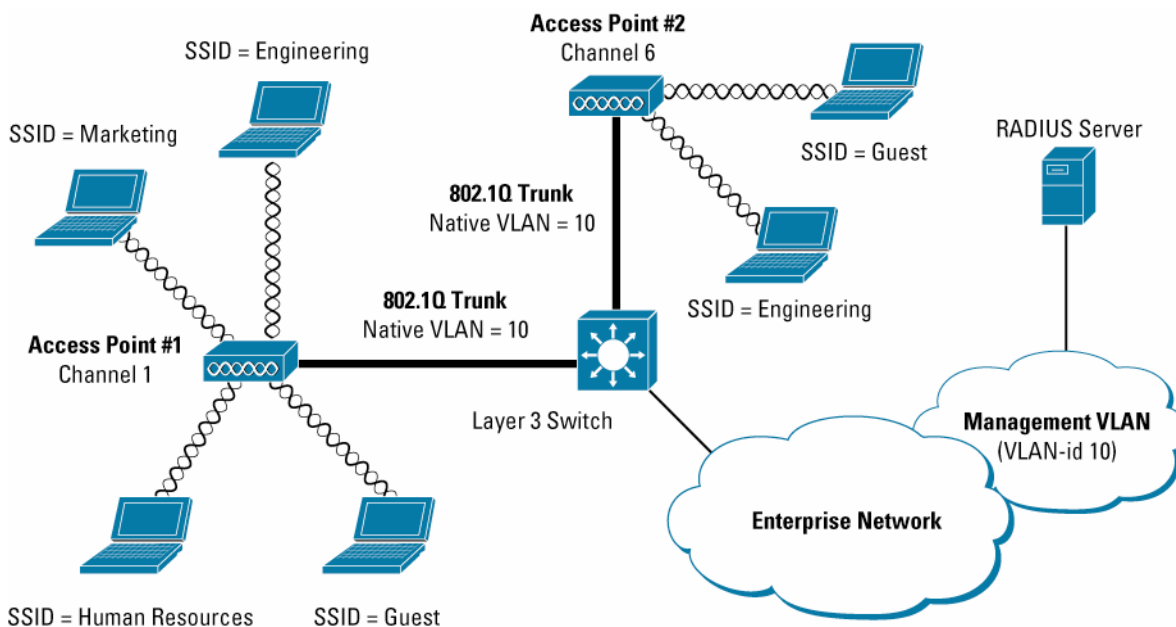


### INTELLIGENT NETWORKING FEATURES FOR A SCALABLE, MANAGEABLE SOLUTION

The Cisco Aironet 1100 Series extends end-to-end intelligent networking to the wireless access point. Cisco command-line interface (CLI) allows customers to quickly and consistently implement the extended capabilities available in Cisco IOS Software. Customers can manage and standardize their networks using tools they have developed internally for their Cisco routers and switches.

An ideal choice for enterprise installations, the Cisco Aironet 1100 Series supports enterprise-class virtual LANs (VLANs), quality of service (QoS) and access control lists (ACLs). The Cisco Aironet 1100 Series can manage up to 16 VLANs (Figure 2), which allows customers to differentiate LAN policies and services, such as security and QoS, for different users. For example, enterprise customers can use different VLANs to segregate employee traffic from guest traffic, and further segregate those traffic groups from high-priority voice traffic. Traffic to and from wireless clients with varying security capabilities can be segregated into VLANs with varying security policies. Another example would be educational institutions that use VLANs to secure faculty and administrator traffic from student traffic traveling over the same infrastructure. Implementing VLAN segmentation increases wireless LAN manageability and security.

Figure 2. Indoor Wireless VLAN Deployment



With support for 802.1p QoS, the Cisco Aironet 1100 Series provides traffic prioritization for packets traveling to and from the access point over Ethernet. Delay-sensitive traffic, such as voice and video, can be prioritized over data traffic for improved user experience and optimal network utilization. Software and radio firmware upgrades allow upgrades to future QoS standards such as 802.11e. Supporting the voice prioritization schemes for 802.11b mobile phones, the Aironet 1100 Series further enables quality voice-over-wireless-LAN solutions.

The Cisco Aironet 1100 Series also supports Wi-Fi Multimedia (WMM) and pre-standard IEEE 802.11e. WMM improves the user experience for audio, video, and voice applications over a Wi-Fi wireless connection. WMM is a subset of the IEEE 802.11e quality of service (QoS) draft standard, supporting QoS-prioritized media access via the Enhanced Distributed Channel Access (EDCA) method. Optional elements of the WMM specification, including Call Admission Control using traffic specifications (TSPEC), are not supported at this time.

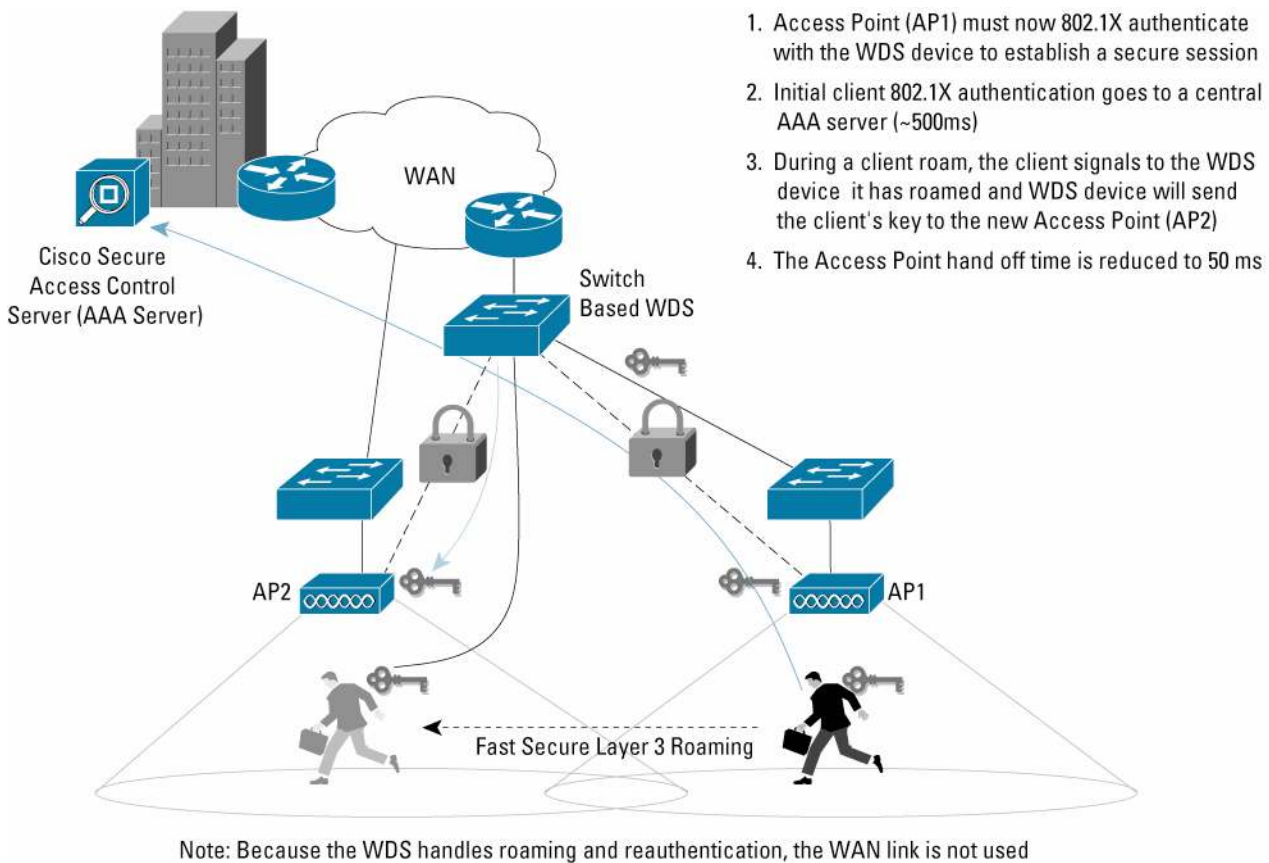
## WIRELESS DOMAIN SERVICES

Wireless domain services (WDS) is a collection of Cisco IOS Software features that expand WLAN client mobility, simplify WLAN deployment and management and enhance WLAN security. These services-supported on access points, client devices, and the Cisco Catalyst® 6500 Series Wireless LAN Services Module (WLSM) today and other Cisco LAN switches and routers in 2005-include radio management aggregation, fast secure roaming, client tracking, and WAN link remote site survivability. WDS radio management aggregation supports radio frequency (RF) managed services such as rogue access point detection for WLAN Intrusion Detection System (IDS), interference detection, assisted site surveys and self-healing wireless LANs. For more information on the Cisco Integrated Wireless Network, visit: <http://www.cisco.com/go/integratedwireless>.

WLAN IDS secures WLANs from malicious and unauthorized access. The Cisco Aironet 1100 Series supports both an integrated and dedicated WLAN IDS. With dedicated WLAN IDS, the Cisco Aironet 1100 Series is placed in Access Point Scanning-Only Mode to support full WLAN intrusion monitoring with continuous full-time, 24 hours and 7 days a week monitoring of the RF environment. With WLAN IDS, the access point performs WLAN intrusion monitoring of the RF environment while also functioning as an IEEE 802.11 infrastructure device allowing client associations to the network.

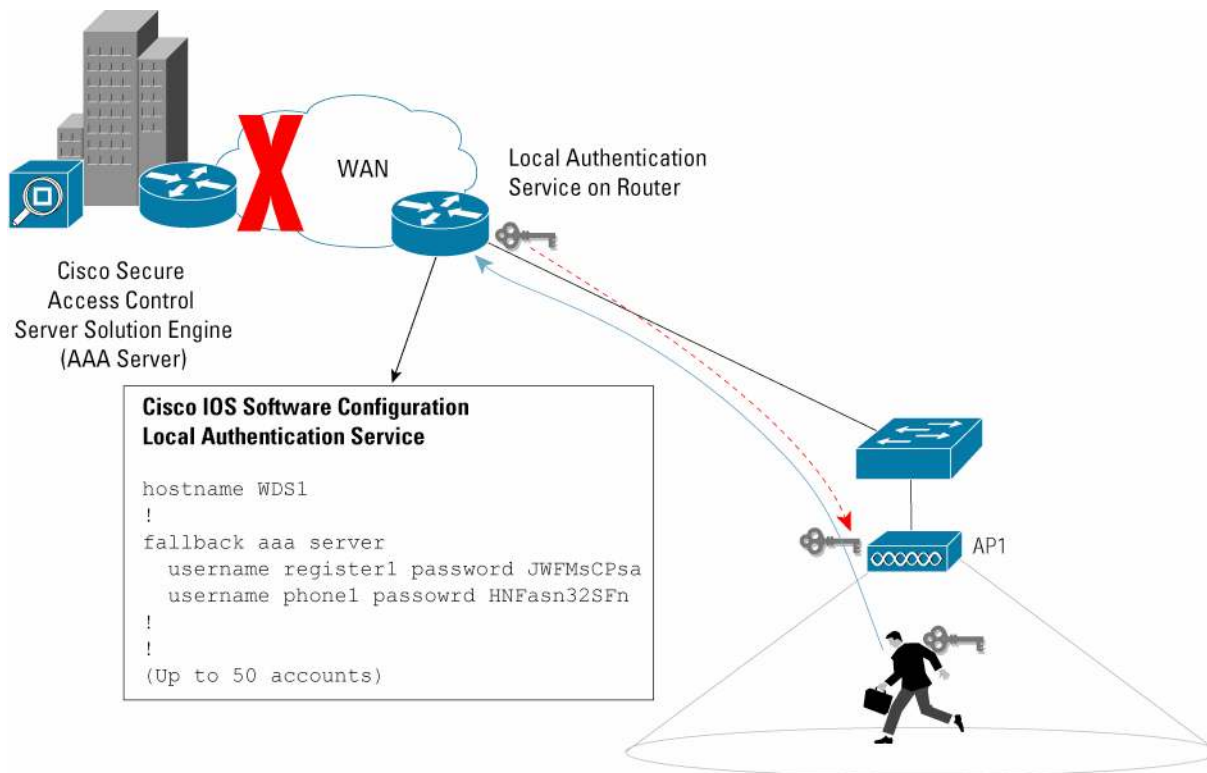
To take advantage of the innovative features of the 1100 Series, not only can Cisco client adapters be used, but now a wide variety of Cisco Compatible devices are available from leading WLAN client suppliers. For example, fast secure roaming is supported by the Cisco Aironet 1100 Series in conjunction with Cisco or Cisco Compatible client devices. With fast secure roaming, authenticated client devices can roam securely from one access point to another, within or across subnets, without perceptible delay during reassociation. Fast secure roaming supports latency-sensitive applications such as wireless voice over IP (VoIP), enterprise resource planning (ERP), or Citrix-based solutions (Figure 3).

**Figure 3.** Fast Secure Roaming



WAN link remote site survivability allows the access point to act as a local RADIUS server to IEEE 802.1X authenticate wireless clients when the authentication, authorization, and accounting (AAA) server is not available. This provides remote site survivability and backup authentication services during a WAN link or server failure allowing users in remote site deployments with nonredundant WAN links access to local resources such as file servers or printers (Figure 4).

Figure 4. WAN Link Remote Site Survivability



## ENTERPRISE-CLASS SECURITY SOLUTION

Wireless LAN security is a primary concern. The Cisco Aironet 1100 Series secures the enterprise network with a scalable and manageable system featuring the award-winning Cisco Wireless Security Suite. Based on the 802.1X standard for port-based network access, the Cisco Wireless Security Suite takes advantage of the Extensible Authentication Protocol (EAP) framework for user-based authentication (Figure 5). This solution also supports Wi-Fi Protected Access (WPA), and Wi-Fi Protected Access 2 (WPA2), the Wi-Fi Alliance certifications for interoperable, standards-based wireless LAN security.

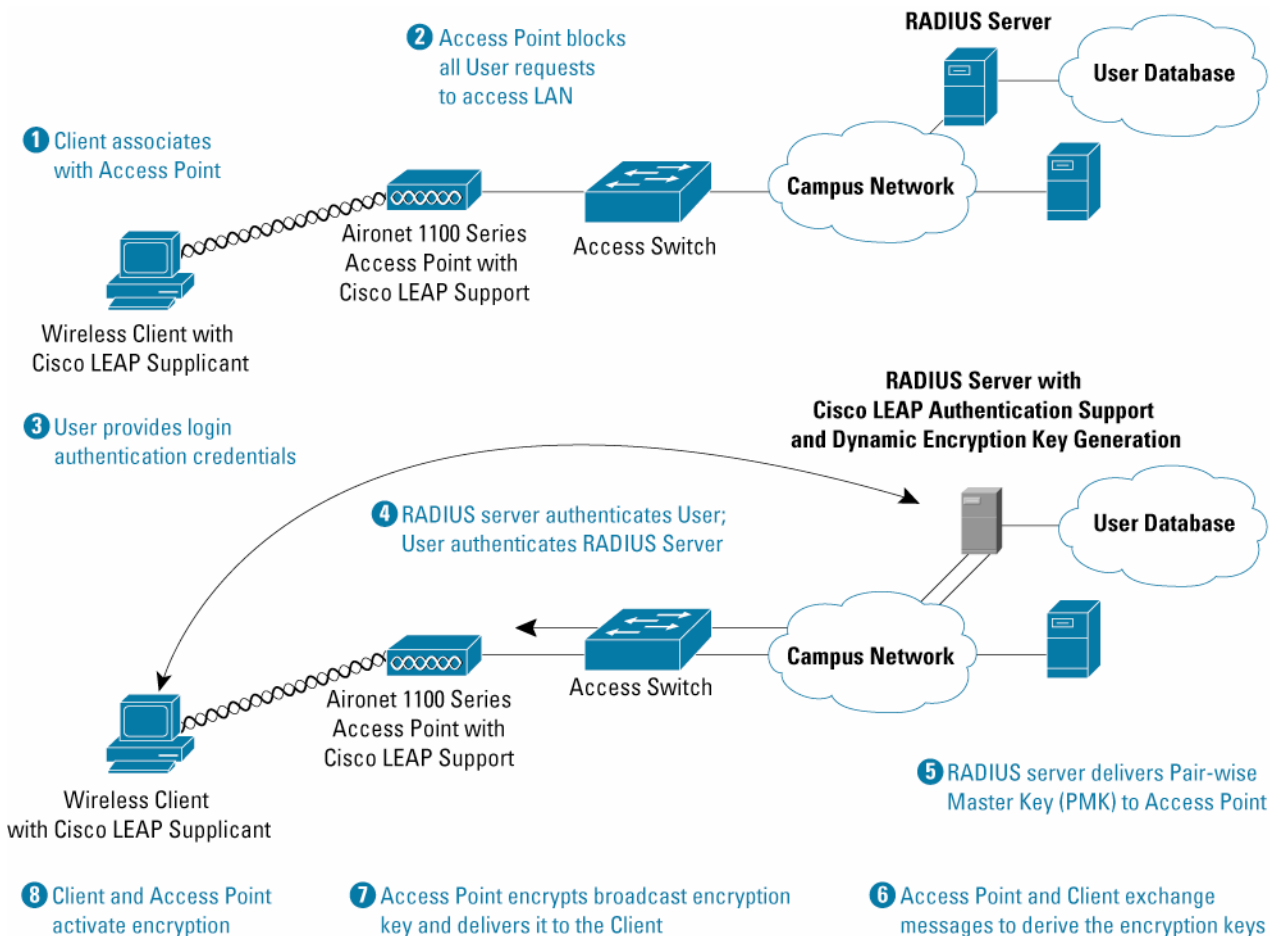
The Cisco Wireless Security Suite interoperates with a range of client devices. It supports all 802.1X authentication types, including Cisco LEAP, Extensible Authentication Protocol-Flexible Authentication via Secure Tunneling (EAP-FAST), EAP-Transport Layer Security (EAP-TLS), Protected Extensible Authentication Protocol-Generic Token Card (PEAP-GTC), Protected Extensible Authentication Protocol-Microsoft Challenge Handshake Authentication Protocol Version 2 (PEAP-MSCHAP V2), EAP-Tunneled TLS (EAP-TTLS) and EAP-Subscriber Identity Module (EAP-SIM). A wide selection of RADIUS servers, such as the Cisco Secure Access Control Server (ACS), can be used for enterprise-class centralized user management that includes:

- Strong, mutual authentication to ensure that only legitimate clients associate with legitimate and authorized network RADIUS servers via authorized access points
- Dynamic per-user, per-session encryption keys that automatically change on a configurable basis to protect the privacy of transmitted data
- Stronger encryption keys provided by Temporal Key Integrity Protocol (TKIP) enhancements such as message integrity check (MIC), per-packet keys via initialization vector hashing, and broadcast key rotation

- IEEE 802.11i/WPA2 Advanced Encryption Standard (AES) support as a firmware upgrade for the 802.11g radio
- RADIUS accounting records for all authentication attempts

For more information on wireless security, visit: <http://www.cisco.com/go/aironet/security>

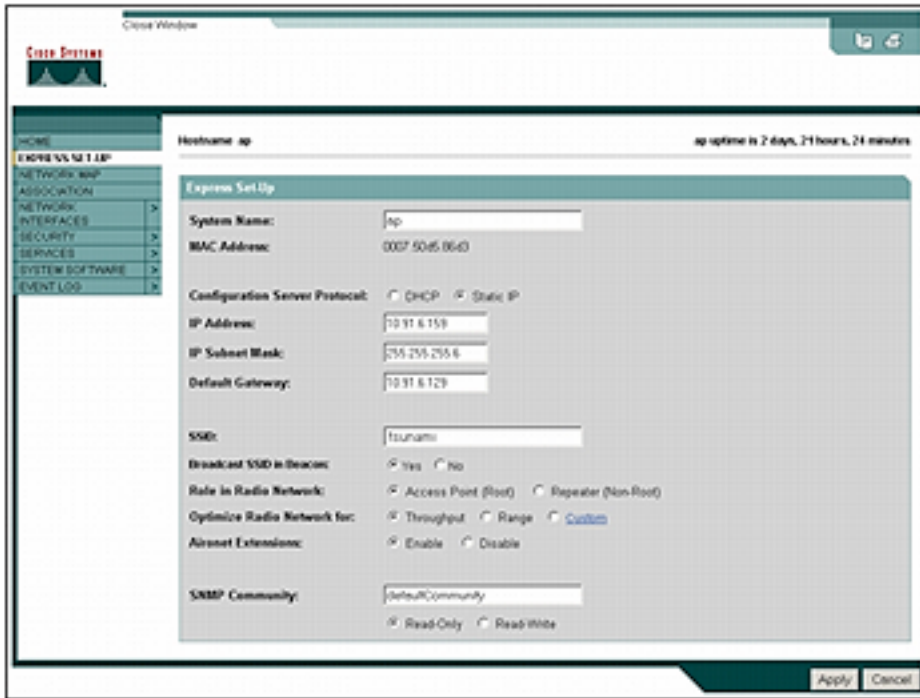
**Figure 5.** The Cisco Wireless Security Suite is an Enterprise-Class Security System Based on the 802.1X Architecture



### SIMPLIFIED DEPLOYMENT FOR RAPID CONNECTIVITY

The Cisco Aironet 1100 Series, with its redesigned graphical user interface (GUI), introduces the next level of intuitive, browser-based management for an improved user experience (Figure 6). A menu-based organization simplifies navigation and configuration for easy setup and ongoing management with uncompromised security. The Cisco Aironet 1100 Series can also be managed using Cisco IOS Software CLI, which is familiar to IT professionals, allowing them to rely on existing skills in both management and deployment.

**Figure 6.** The redesigned GUI in the Aironet 1100 Series provides intuitive browser-based management for basic configuration of the access point.



The Cisco Aironet 1100 Series defines enterprise office deployment capability. Designed in an attractive, durable plastic enclosure, with integrated diversity dipole antennas, the Cisco Aironet 1100 Series can be quickly deployed with a reliable, omni-directional coverage pattern. Supported in various mounting orientations and locations, it can be easily moved throughout the work area as needs change (Figure 7). A standard, surface-mounting bracket supports installation on office walls and ceilings for elevated placement. UL 2043 certification for the plenum rating requirements set by local fire codes supports installation in environmental air spaces such as areas above suspended ceilings. The design protects against tampering and theft using single- or master-keyed padlocks. The Cisco Aironet 1100 Series can also be brought into the cubicle space with a cubicle wall-mounting bracket or device stand. The device stand positions the access point on any horizontal surface, such as a desktop or shelf. Theft is deterred in these installations using the security slot with standard security cables. Support for either local or inline power over Ethernet further simplifies installation. The Cisco Aironet 1100 Series is Wi-Fi certified to ensure interoperability with other IEEE 802.11g and IEEE 802.11b devices.

**Figure 7.** The Cisco Aironet 1100 Series Access Point Mounting Brackets Include Ceiling, Wall, Cubicle, and Desktop Options



### **ADVANCED MANAGEMENT OF LARGE SCALE WIRELESS LAN DEPLOYMENTS**

The CiscoWorks Wireless LAN Solution Engine (WLSE) is available as a management tool for Cisco Aironet access points and wireless bridges. CiscoWorks WLSE is a turnkey, scalable, and centralized management platform for managing hundreds to thousands of Cisco Aironet access points and wireless bridges. For more information on CiscoWorks WLSE, visit: <http://www.cisco.com/go/wlse>

### **COST-EFFECTIVE SOLUTION FOR EVOLVING REQUIREMENTS**

The Cisco Aironet 1100 Series is ideal for new deployments, or as an addition to existing deployments to support increasing capacity requirements. Engineered with extra system capacity, including memory, storage, and processing power, the Cisco Aironet 1100 Series is designed to support not only today's feature set, but future software releases for expanded functionality and capabilities.

### **KEY FEATURES AND BENEFITS**

The Cisco Aironet 1100 Series merges enterprise features, manageability, security, and availability into a scalable, easy-to-deploy, and cost-effective WLAN solution. Tables 1–3 highlight key features, product specifications, and product system requirements for the Cisco Aironet 1100 Series.



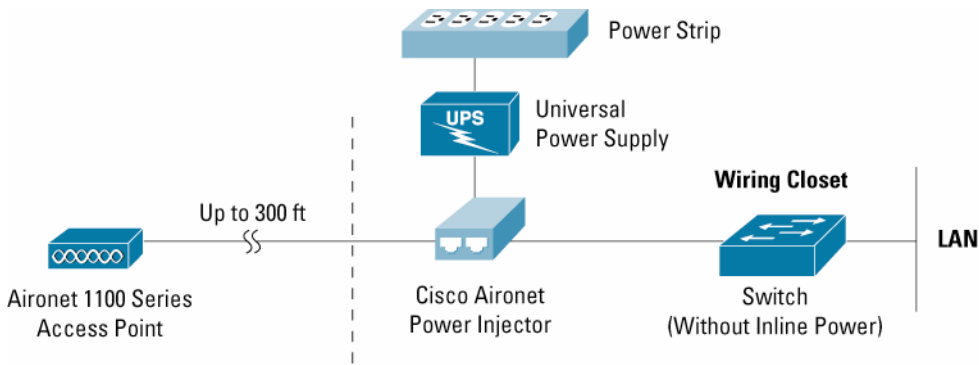
**Table 1.** Key Features and Benefits

Feature	Benefit
<b>Enterprise Performance</b>	
2.4 GHz 802.11g or 802.11b radio, configurable up to 100 mW	<ul style="list-style-type: none"> <li>• High-performance 2.4 GHz WLAN solution that delivers data rates of up to 11 Mbps (IEEE 802.11b) or 54 Mbps (IEEE 802.11g) with backwards compatibility to legacy 802.11b equipment</li> <li>• High-quality transmitter and receiver design provides long range and reliable coverage</li> </ul>
Cisco IOS Software	<ul style="list-style-type: none"> <li>• Provides end-to-end solution support for intelligent network services</li> <li>• Produces predictable and consistent network behavior</li> <li>• Delivers uniform applications and services</li> </ul>
Virtual LAN (VLAN) support	<ul style="list-style-type: none"> <li>• Allows segmentation of up to 16 user groups</li> <li>• Increases system flexibility, accommodating clients with different security requirements and capabilities</li> </ul>
Quality of Service (QoS)	<ul style="list-style-type: none"> <li>• Prioritizes traffic for different application requirements</li> <li>• Improves voice and video user experience</li> </ul>
Wi-Fi Multimedia (WMM)	<ul style="list-style-type: none"> <li>• Subset of the IEEE 802.11e QoS draft standard, supporting QoS prioritized media access via the EDCA method</li> <li>• Improves the user experience for audio, video, and voice applications over a Wi-Fi wireless connection</li> </ul>
Cisco Integrated Wireless Network	<ul style="list-style-type: none"> <li>• Comprehensive Cisco framework to integrate and extend wired and wireless networks to deliver the lowest possible total cost of ownership for companies deploying WLANs</li> <li>• Extends “wireless awareness” into important elements of the network infrastructure</li> <li>• Provides the same level of security, scalability, reliability, ease of deployment, and management for wireless LANs that organizations have come to expect from their wired LANs</li> </ul>
Wireless Domain Services (WDS)	<ul style="list-style-type: none"> <li>• Collection of Cisco IOS Software features enhance WLAN client mobility and simplify WLAN deployment and management</li> <li>• Supports radio management aggregation, fast secure roaming, client tracking, and WAN link remote site survivability</li> </ul>
Fast Secure Roaming	<ul style="list-style-type: none"> <li>• Allows authenticated client devices to roam securely from one access point to another, within or across subnets, without any perceptible delay during reassociation</li> <li>• Supports latency-sensitive applications such as VoIP, ERP and Citrix</li> </ul>
WAN Link Remote Site Survivability	<ul style="list-style-type: none"> <li>• Allows the access point to act as a local RADIUS server to IEEE 802.1X authenticate wireless clients when the AAA server is not available</li> <li>• Provides remote site survivability and backup authentication services during WAN link or server failure</li> </ul>
Access Point Scanning-Only Mode	<ul style="list-style-type: none"> <li>• WDS feature that allows the Cisco Aironet access point to be set in a scanning-only mode, where it scans the RF environment for rogue access points and unassociated 802.11 clients. In this WLAN IDS mode, the access point does not transmit beacons, respond to probe requests, or support client device association.</li> </ul>

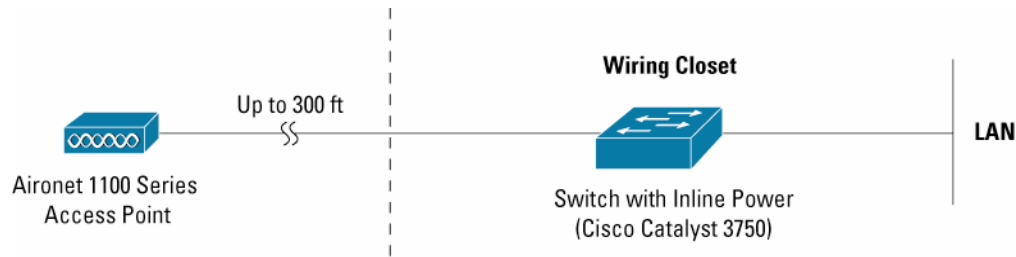
Feature	Benefit
Client Tracking	<ul style="list-style-type: none"> <li>WDS feature that expands the radio management information gathered from Cisco Aironet access points to include near-real-time tracking information on client authentication and roaming events via the CiscoWorks WLSE.</li> </ul>
Client Address Resolution Protocol (ARP) Caching	<ul style="list-style-type: none"> <li>Allows Cisco Aironet access points to respond to Address Resolution Protocol (ARP) requests on behalf of IEEE 802.11 Cisco Aironet, Cisco Compatible Extensions and most Wi-Fi Certified wireless client devices</li> <li>Enables IP address resolution without requiring the wireless client device to leave power save or idle modes</li> <li>Extends client device battery life</li> </ul>
RADIUS Server per SSID	<ul style="list-style-type: none"> <li>Allows specification of RADIUS servers on a per SSID basis by leveraging access point multiple SSID capabilities</li> <li>Beneficial for multi-tenant deployments, such as airports, where each tenant desires a separate RADIUS server for user authentication</li> </ul>
WPA Migration Mode	<ul style="list-style-type: none"> <li>Enables both WPA and non-WPA clients to associate to an access point using the same SSID</li> </ul>
<b>Manageability</b>	
Support for Cisco Discovery Protocol, SNMP standard MIB I and MIB II	<ul style="list-style-type: none"> <li>Interoperable with Simple Network Management Protocol (SNMP)-compliant network management systems such as HP OpenView and CA Unicenter</li> <li>Manageable by many CiscoWorks applications in Resource Manager Essentials (Inventory Manager, Software Image Manager, Availability Manager), Campus Manager (Topology Services), and CiscoView</li> </ul>
Cisco CLI supports Telnet, FTP, and TFTP	<ul style="list-style-type: none"> <li>Provides interface familiar to large community of network managers</li> <li>Enables centralized management of remote access points</li> <li>Facilitates standardization of network configuration</li> </ul>
<b>Secure</b>	
40-bit, 128-bit WEP	<ul style="list-style-type: none"> <li>Supports standards-based security methods for interoperability</li> </ul>
Advanced Encryption Standard (AES)	<ul style="list-style-type: none"> <li>Helps to ensure data privacy using the strongest security algorithm defined for WLANs</li> <li>Provides uncompromised performance</li> <li>Available on 802.11g version</li> </ul>
Cisco Wireless Security Suite Support	<ul style="list-style-type: none"> <li>Provides award-winning WLAN security features</li> <li>Defends against passive and active security attacks</li> <li>802.1X and EAP-based authentication leverages user access lists</li> <li>Supports RADIUS server for user login registry</li> <li>Includes TKIP and AES encryption enhancements</li> <li>Supports Wi-Fi Protected Access (WPA), and Wi-Fi Protected Access 2 (WPA2), the Wi-Fi Alliance specifications for interoperable, standards-based wireless LAN security</li> </ul>

Feature	Benefit
<b>Scalability</b>	
Range of management and security options	<ul style="list-style-type: none"> <li>Autonomous management and security features scale with evolving architecture</li> <li>Requires minimal initial investment</li> </ul>
Configurable transmit power	<ul style="list-style-type: none"> <li>Facilitates cell-size management</li> <li>Coverage can be decreased as deployment density requirements to optimize bandwidth increase</li> </ul>
<b>Availability</b>	
Hot standby	<ul style="list-style-type: none"> <li>Fails over seamlessly to standby access point</li> </ul>
Load balancing	<ul style="list-style-type: none"> <li>Distributes user connections across available access points</li> <li>Optimizes Aggregate Throughput</li> </ul>
Auto rate scaling	<ul style="list-style-type: none"> <li>Sustains connectivity at outlying distances</li> </ul>
<b>Investment Protection</b>	
802.11g and 802.11b-compliant	<ul style="list-style-type: none"> <li>Support newer-high speed 802.11g clients as well as installed base of 802.11b clients</li> <li>Mature technology incorporates generations of enhancements</li> </ul>
8 MB Flash memory for firmware	<ul style="list-style-type: none"> <li>Provides extra capacity for follow-on feature releases</li> </ul>
Anti-theft security slot and security hasp	<ul style="list-style-type: none"> <li>Supports standard security cables or padlocks (not included)</li> <li>Locks can be single- or master-keyed for simplified inventory management</li> </ul>
<b>Simplified Deployment</b>	
Flexible mounting orientations	<ul style="list-style-type: none"> <li>Supports installation for a wide range of locations including walls, ceilings, desktops, and cubicle partitions</li> </ul>
Integrated diversity dipole antennas	<ul style="list-style-type: none"> <li>Compact antenna profile</li> <li>Spherical coverage pattern is optimized for any orientation</li> <li>Diversity antennas improve reliability in high multipath environments such as offices</li> </ul>
Auto-channel selection	<ul style="list-style-type: none"> <li>Determines and selects least congested channel</li> </ul>
Supports Inline power over Ethernet (Figures 8, 9, 10)	<ul style="list-style-type: none"> <li>Eliminates need for local AC power</li> <li>Reduces cable clutter</li> <li>Enables deployment in remote locations</li> </ul>
HTTP server with redesigned Web browser-based GUI	<ul style="list-style-type: none"> <li>Navigable graphic-oriented layout common across Cisco products</li> <li>Express Set Up consolidates key configuration tasks in single view</li> </ul>
Dynamic Host Configuration Protocol (DHCP) client	<ul style="list-style-type: none"> <li>Automatically obtains an IP address from DHCP server</li> </ul>

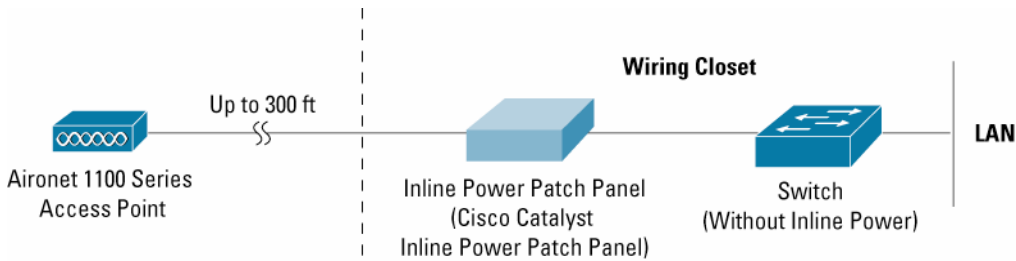
**Figure 8.** The Cisco Aironet 1100 Series can be powered over Ethernet with the optional inline power injector.



**Figure 9.** The Cisco Aironet 1100 Series can use Cisco Catalyst powered switches for power over Ethernet. See Table 3 for specific details.



**Figure 10.** A Cisco Catalyst Inline Power Patch Panel can be used to power the Cisco Aironet 1100 Series over Ethernet.



**Table 2.** Product Specifications

Item	Specification
<b>Part Number</b>	<ul style="list-style-type: none"> <li>• 802.11b: AIR-AP1120B-x-K9</li> <li>• 802.11g: AIR-AP1121G-x-K9</li> </ul> <p>Regulatory Domains: (X=Regulatory Domain)</p> <ul style="list-style-type: none"> <li>• A=FCC</li> <li>• E=ETSI</li> <li>• J=TELEC (Japan)</li> </ul> <p>Customers are responsible for verifying approval for use in their country. Please see <a href="http://www.cisco.com/go/aironet/compliance">http://www.cisco.com/go/aironet/compliance</a> to verify approval and to identify the regulatory domain that corresponds to a particular country. Not all regulatory domains have been approved. As they are approved, the part numbers will be available on the Global Price List.</p>
<b>Data Rates Supported</b>	<ul style="list-style-type: none"> <li>• 802.11b: 1, 2, 5.5, 11 Mbps</li> <li>• 802.11g: 1, 2, 5.5, 6, 9, 11, 12, 18, 24, 36, 48, and 54 Mbps</li> </ul>
<b>Network Standard</b>	<ul style="list-style-type: none"> <li>• IEEE 802.11b or IEEE 802.11g</li> </ul>
<b>Uplink</b>	<ul style="list-style-type: none"> <li>• Autosensing 802.3 10/100BaseT Ethernet</li> </ul>
<b>Frequency Band</b>	<ul style="list-style-type: none"> <li>• 802.11b: <ul style="list-style-type: none"> <li>– 2.412 to 2.462 GHz (FCC)</li> <li>– 2.412 to 2.472 GHz (ETSI)</li> <li>– 2.412 to 2.484 GHz (TELEC)</li> <li>– 2.432 to 2.447 GHz (Israel)</li> </ul> </li> <li>• 802.11g: <ul style="list-style-type: none"> <li>– 2.412 to 2.462 GHz (FCC)</li> <li>– 2.412 to 2.472 GHz (ETSI)</li> <li>– 2.412 to 2.484 GHz CCK: (TELEC)</li> <li>– 2.412 to 2.472 GHz OFDM: (TELEC)</li> </ul> </li> </ul>
<b>Network Architecture Type</b>	<ul style="list-style-type: none"> <li>• Infrastructure, star topology</li> </ul>
<b>Wireless Medium</b>	<ul style="list-style-type: none"> <li>• 802.11g: Orthogonal Frequency Division Multiplexing (OFDM)</li> <li>• 802.11b and 802.11g: Direct sequence spread spectrum (DSSS)</li> </ul>
<b>Media Access Protocol</b>	Carrier sense multiple access with collision avoidance (CSMA/CA)


Item	Specification
<b>Modulation</b>	<ul style="list-style-type: none"> <li>• OFDM: <ul style="list-style-type: none"> <li>– BPSK @ 6 and 9 Mbps</li> <li>– QPSK @ 12 and 18 Mbps</li> <li>– 16-QAM @ 24 and 36 Mbps</li> <li>– 64-QAM @ 48 and 54 Mbps</li> </ul> </li> <li>• DSS: <ul style="list-style-type: none"> <li>– DBPSK @ 1 Mbps</li> <li>– DQPSK @ 2 Mbps</li> <li>– CCK @ 5.5 and 11 Mbps</li> </ul> </li> </ul>
<b>Operating Channels</b>	<ul style="list-style-type: none"> <li>• 802.11b ETSI: 13; Israel: 4; Americas: 11; TELEC (Japan): 14</li> <li>• 802.11g ETSI: 13; Americas: 11; TELEC (Japan): CCK-14, OFDM-13</li> </ul>
<b>Nonoverlapping Channels</b>	<ul style="list-style-type: none"> <li>• Three</li> </ul>
<b>Receive Sensitivity</b>	<ul style="list-style-type: none"> <li>• 802.11b: <ul style="list-style-type: none"> <li>– 1 Mbps: -94 dBm</li> <li>– 2 Mbps: -91 dBm</li> <li>– 5.5 Mbps: -89 dBm</li> <li>– 11 Mbps: -85 dBm</li> </ul> </li> <li>• 802.11g: <ul style="list-style-type: none"> <li>– 1 Mbps: -95 dBm</li> <li>– 2 Mbps: -91 dBm</li> <li>– 5.5 Mbps: -89 dBm</li> <li>– 6 Mbps: -90 dBm</li> <li>– 9 Mbps: -84 dBm</li> <li>– 11 Mbps: -88 dBm</li> <li>– 12 Mbps: -82 dBm</li> <li>– 18 Mbps: -80 dBm</li> <li>– 24 Mbps: -77 dBm</li> <li>– 36 Mbps: -73 dBm</li> <li>– 48 Mbps: -72 dBm</li> <li>– 54 Mbps: -72 dBm</li> </ul> </li> </ul>

Item	Specification
<b>Available Transmit Power Settings</b>	<p><b>802.11b:</b></p> <ul style="list-style-type: none"> <li>• CCK: <ul style="list-style-type: none"> <li>– 100 mW (20 dBm)</li> <li>– 50 mW (17 dBm)</li> <li>– 30 mW (15 dBm)</li> <li>– 20 mW (13 dBm)</li> <li>– 5 mW (7 dBm)</li> <li>– 1 mW (0 dBm)</li> </ul> </li> </ul> <p><b>802.11g:</b></p> <ul style="list-style-type: none"> <li>• CCK: <ul style="list-style-type: none"> <li>– 100 mW (20 dBm)</li> <li>– 50 mW (17 dBm)</li> <li>– 30 mW (15 dBm)</li> <li>– 20 mW (13 dBm)</li> <li>– 10 mW (10 dBm)</li> <li>– 5 mW (7 dBm)</li> <li>– 1 mW (0 dBm)</li> </ul> </li> <li>• OFDM: <ul style="list-style-type: none"> <li>– 30 mW (15 dBm)</li> <li>– 20 mW (13 dBm)</li> <li>– 10 mW (10 dBm)</li> <li>– 5 mW (7 dBm)</li> <li>– 1 mW (0 dBm)</li> </ul> </li> <li>• Maximum power setting will vary according to individual country regulations.</li> </ul>
<b>Range</b>	<p><b>Indoor: Distance across open office environment</b></p> <ul style="list-style-type: none"> <li>• 90 ft (27 m) @ 54 Mbps</li> <li>• 95 ft (29 m) @ 48 Mbps</li> <li>• 100 ft (30 m) @ 36 Mbps</li> <li>• 140 ft (42 m) @ 24 Mbps</li> <li>• 180 ft (54 m) @ 18 Mbps</li> <li>• 210 ft (64 m) @ 12 Mbps</li> </ul>

Item	Specification
	<ul style="list-style-type: none"> <li>• 220 ft (67 m) @ 11 Mbps</li> <li>• 250 ft (76 m) @ 9 Mbps</li> <li>• 300 ft (91 m) @ 6 Mbps</li> <li>• 310 ft (94 m) @ 5.5 Mbps</li> <li>• 350 ft (107 m) @ 2 Mbps</li> <li>• 410 ft (125 m) @ 1 Mbps</li> </ul> <p><b>Outdoor:</b></p> <ul style="list-style-type: none"> <li>• 110 ft (34 m) @ 54 Mbps</li> <li>• 200 ft (60 m) @ 48 Mbps</li> <li>• 225 ft (69 m) @ 36 Mbps</li> <li>• 325 ft (100 m) @ 24 Mbps</li> <li>• 400 ft (122 m) @ 18 Mbps</li> <li>• 475 ft (145 m) @ 12 Mbps</li> <li>• 490 ft (150 m) @ 11 Mbps</li> <li>• 550 ft (168 m) @ 9 Mbps</li> <li>• 650 ft (198 m) @ 6 Mbps</li> <li>• 660 ft (201 m) @ 5.5 Mbps</li> <li>• 690 ft (210 m) @ 2 Mbps</li> <li>• 700 ft (213 m) @ 1Mbps</li> </ul> <p>Ranges and actual throughput vary based upon numerous environmental factors so individual performance may differ</p>
<b>Compliance</b>	<p><b>Standards</b></p> <ul style="list-style-type: none"> <li>• <i>Safety</i> <ul style="list-style-type: none"> <li>– UL 1950</li> <li>– CSA 22.2 No. 950-95</li> <li>– IEC 60950</li> <li>– EN 60950</li> </ul> </li> <li>• <i>Radio Approvals</i> <ul style="list-style-type: none"> <li>– FCC Part 15.247</li> <li>– RSS-210 (Canada)</li> <li>– EN 300.328 (Europe)</li> <li>– ARIB-STD 33 (Japan)</li> </ul> </li> </ul>



Item	Specification
	<ul style="list-style-type: none"> <li>– ARIB-STD 66 (Japan)</li> <li>– AS/NZS 4268:2003 (Australia and New Zealand)</li> <li>• <i>EMI and Susceptibility (Class B)</i> <ul style="list-style-type: none"> <li>– FCC Part 15.107 and 15.109</li> <li>– ICES-003 (Canada)</li> <li>– VCCI (Japan)</li> <li>– EN 301.489-1 and -17 (Europe)</li> </ul> </li> <li>• <i>Security</i> <ul style="list-style-type: none"> <li>– 802.11i, WPA2, WPA</li> <li>– 802.1x</li> <li>– AES, TKIP</li> </ul> </li> <li>• <i>Other</i> <ul style="list-style-type: none"> <li>– IEEE 802.11b and IEEE 802.11g</li> <li>– FCC Bulletin OET-65C</li> <li>– RSS-102</li> </ul> </li> </ul>
<b>SNMP Compliance</b>	<ul style="list-style-type: none"> <li>• MIB I and MIB II</li> </ul>
<b>Antenna</b>	<ul style="list-style-type: none"> <li>• Integrated 2.2 dBi diversity dipole antennas</li> </ul>
<b>Security Architecture Client Authentication and Encryption</b>	<p>Cisco Wireless Security Suite supporting WPA and WPA2, including:</p> <p><b>Authentication</b></p> <ul style="list-style-type: none"> <li>• 802.1X support, including Cisco LEAP, EAP-Flexible Authentication via Secure Tunneling (EAP-FAST), Protected EAP- Generic Token Card (PEAP-GTC), PEAP-Microsoft Challenge Authentication Protocol Version 2 (PEAP-MSCHAPv2), EAP-Transport Layer Security (EAP-TLS), EAP-Tunneled TLS (EAP-TTLS), and EAP-Subscriber Identity Module (EAP-SIM) to yield mutual authentication and dynamic, per-user, per-session encryption keys (WPA and WPA2)</li> <li>• MAC address and standard 802.11 authentication mechanisms</li> </ul> <p><b>Encryption</b></p> <ul style="list-style-type: none"> <li>• AES-CCMP encryption (WPA2)</li> <li>• TKIP encryption enhancements: key hashing (per-packet keying), message integrity check (MIC) and broadcast key rotation via Cisco TKIP or WPA TKIP</li> <li>• Support for static and dynamic IEEE 802.11 WEP keys of 40 bits and 128 bits</li> </ul>
<b>Status LEDs</b>	<ul style="list-style-type: none"> <li>• Three indicators on the top panel report association status, operation, error/warning, firmware upgrade, and configuration, network/modem, and radio status</li> </ul>
<b>Software and Device Management and Topology</b>	<ul style="list-style-type: none"> <li>• CiscoWorks CiscoView, Resource Manager Essentials, and Campus Manager</li> </ul>
<b>Remote Configuration Support</b>	<ul style="list-style-type: none"> <li>• BOOTP, DHCP, Telnet, HTTP, FTP, TFTP, and SNMP</li> </ul>

Item	Specification
<b>Dimensions</b>	<ul style="list-style-type: none"> <li>4.1 in. (10.4 cm) wide; 8.1 in. (20.5 cm) high; 1.5 in. (3.8 cm) deep</li> </ul>
<b>Weight</b>	<ul style="list-style-type: none"> <li>10.5 oz. (297 g)</li> </ul>
<b>Environmental</b>	<ul style="list-style-type: none"> <li>32–104° F (0–40° C)</li> <li>10–90% humidity (noncondensing)</li> </ul>
<b>System Memory</b>	<ul style="list-style-type: none"> <li>16 MB RAM</li> <li>8 MB FLASH</li> </ul>
<b>Input Power Requirements</b>	<ul style="list-style-type: none"> <li>100–240 VAC 50–0Hz (power supply)</li> <li>33–57 VDC (device)</li> </ul>
<b>Power Draw</b>	<ul style="list-style-type: none"> <li>4.9 watts, RMS</li> </ul>
<b>Warranty</b>	<ul style="list-style-type: none"> <li>One year</li> </ul>
<b>Wi-Fi Certification</b>	

**Table 3.** Product System Requirements

Feature	System Requirement
Standard 802.1X-compliant user-level authentication and dynamic encryption keying	One of the following RADIUS servers: <ul style="list-style-type: none"> <li>Cisco Secure Access Control Server Version 3.0 or greater</li> <li>Cisco Access Registrar® Version 3.0 or greater</li> <li>Funk Software Steel Belted RADIUS Server Version 3.0 or greater</li> <li>Interlink Networks RAD-Series RADIUS Server Version 5.1 or greater</li> </ul>
CiscoWorks RME/Campus Manager	<ul style="list-style-type: none"> <li>CiscoWorks LAN Management Solution (LMS) or Routed WAN Solution (RWAN)</li> </ul>
Line power over Ethernet support	<ul style="list-style-type: none"> <li>Cisco AIR-PWRINJ3= Aironet Power Injector for the 1100 and 1200 Series</li> <li>Cisco AIR-PWRINJ-FIB= Aironet Power Injector Media Converter</li> <li>Cisco Catalyst Switch IEEE 802.3af and Pre-Standard Power over Ethernet</li> <li>Cisco WS-PWR-PANEL Midspan Power Patch Panel</li> </ul>

### CISCO SMARTNET SUPPORT AND SMARTNET ONSITE SUPPORT

Operational technical support service for maximizing network availability is offered through Cisco SMARTnet® support and SMARTnet Onsite support. Cisco SMARTnet support augments the resources of your operations staff; it provides them access to a wealth of expertise, both online and via telephone; the ability to refresh their system software at will; and a range of hardware advance-replacement options. Cisco SMARTnet Onsite support provides all SMARTnet services and complements the hardware advance-replacement feature by adding the services of a field engineer, critical for those locations where staffing is insufficient or unavailable to replace parts.

To learn more about service and support for the Cisco Aironet 1100 Series, visit:

[http://www.cisco.com/en/US/products/svcs/ps3034/ps2827/ps2978/serv\\_home.html](http://www.cisco.com/en/US/products/svcs/ps3034/ps2827/ps2978/serv_home.html)

## SERVICE AND SUPPORT

Cisco offers a wide range of services programs to accelerate customer success. These innovative services programs are delivered through a unique combination of people, processes, tools, and partners, resulting in high levels of customer satisfaction. Cisco services help you to protect your network investment, optimize network operations, and prepare the network for new applications to extend network intelligence and the power of your business. For more information about Cisco Services, see Cisco Technical Support Services or Cisco Advanced Services.



### Corporate Headquarters

Cisco Systems, Inc.  
170 West Tasman Drive  
San Jose, CA 95134-1706  
USA  
www.cisco.com  
Tel: 408 526-4000  
800 553-NETS (6387)  
Fax: 408 526-4100

### European Headquarters

Cisco Systems International BV  
Haarlerbergpark  
Haarlerbergweg 13-19  
1101 CH Amsterdam  
The Netherlands  
www-europe.cisco.com  
Tel: 31 0 20 357 1000  
Fax: 31 0 20 357 1100

### Americas Headquarters

Cisco Systems, Inc.  
170 West Tasman Drive  
San Jose, CA 95134-1706  
USA  
www.cisco.com  
Tel: 408 526-7660  
Fax: 408 527-0883

### Asia Pacific Headquarters

Cisco Systems, Inc.  
168 Robinson Road  
#28-01 Capital Tower  
Singapore 068912  
www.cisco.com  
Tel: +65 6317 7777  
Fax: +65 6317 7799

Cisco Systems has more than 200 offices in the following countries and regions. Addresses, phone numbers, and fax numbers are listed on the Cisco Website at [www.cisco.com/go/offices](http://www.cisco.com/go/offices).

Argentina • Australia • Austria • Belgium • Brazil • Bulgaria • Canada • Chile • China PRC • Colombia • Costa Rica • Croatia • Cyprus  
Czech Republic • Denmark • Dubai, UAE • Finland • France • Germany • Greece • Hong Kong SAR • Hungary • India • Indonesia • Ireland • Israel  
Italy • Japan • Korea • Luxembourg • Malaysia • Mexico • The Netherlands • New Zealand • Norway • Peru • Philippines • Poland • Portugal  
Puerto Rico • Romania • Russia • Saudi Arabia • Scotland • Singapore • Slovakia • Slovenia • South Africa • Spain • Sweden • Switzerland • Taiwan  
Thailand • Turkey • Ukraine • United Kingdom • United States • Venezuela • Vietnam • Zimbabwe

Copyright © 2005 Cisco Systems, Inc. All rights reserved. CCSP, CCVP, the Cisco Square Bridge logo, Follow Me Browsing, and StackWise are trademarks of Cisco Systems, Inc.; Changing the Way We Work, Live, Play, and Learn, and iQuick Study are service marks of Cisco Systems, Inc.; and Access Registrar, Aironet, ASIST, BPX, Catalyst, CCDA, CCDP, CCIE, CCIP, CCNA, CCNP, Cisco, the Cisco Certified Internetwork Expert logo, Cisco IOS, Cisco Press, Cisco Systems, Cisco Systems Capital, the Cisco Systems logo, Cisco Unity, Empowering the Internet Generation, Enterprise/Solver, EtherChannel, EtherFast, EtherSwitch, Fast Step, FormShare, GigaDrive, GigaStack, HomeLink, Internet Quotient, IOS, IP/TV, iQ Expertise, the iQ logo, iQ Net Readiness Scorecard, LightStream, Linksys, MeetingPlace, MGX, the Networkers logo, Networking Academy, Network Registrar, Packet, PIX, Post-Routing, Pre-Routing, ProConnect, RateMUX, ScriptShare, SlideCast, SMARTnet, StrataView Plus, TeleRouter, The Fastest Way to Increase Your Internet Quotient, and TransPath are registered trademarks of Cisco Systems, Inc. and/or its affiliates in the United States and certain other countries.

All other trademarks mentioned in this document or Website are the property of their respective owners. The use of the word partner does not imply a partnership relationship between Cisco and any other company. (0502R) 205327.BW\_ETMG\_LS\_8.05

