



## User Guide



AE6000 | Wireless Mini USB Adapter AC580 Dual Band

# Contents

---

## **Product Overview**

---

Features	1
----------	---

## **Installation**

---

Installation	2
--------------	---

## **Wireless Network Configuration**

---

Wi-Fi Protected Setup	3
Wireless network configuration utility	3
Operating system's built-in wireless network setup	3

## **Troubleshooting**

---

Linksys AE6000	10
----------------	----

## **Specifications**

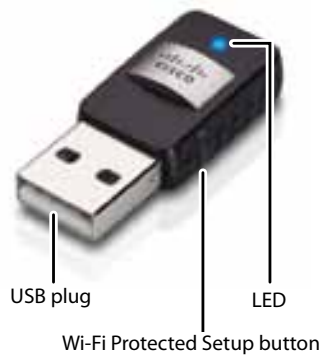
---

Linksys AE6000	11
----------------	----

# Product Overview

Thank you for choosing the Linksys dual-band wireless mini USB AC580 adapter. Using the latest wireless networking technology, the adapter adds or upgrades wireless connectivity on your Windows-based desktop or laptop computer. To help protect your data and privacy, you can configure your home network and this adapter to use Wi-Fi Protected Access 2 (WPA2) encryption.

## Features



**USB plug:** Connect this end to any available USB port on your computer.

**LED:** Flashes when there is wireless network activity.

**Wi-Fi Protected Setup button:** Press this button and the Wi-Fi Protected Setup button on your router or access point to connect your computer to the wireless network.

# Installation

This chapter describes the procedure for installing the adapter.

## Installation

To install the adapter:

1. Insert the CD into your CD or DVD drive.



2. For Windows 8, click **Tap to choose what happens to this disc** in the upper-right corner of the screen.
3. Click **Set up your Linksys Adapter**.

If you do not see a pop-up menu for the CD, access Setup on the CD directly. To access the CD, perform the following steps for your operating system:

### Windows 8

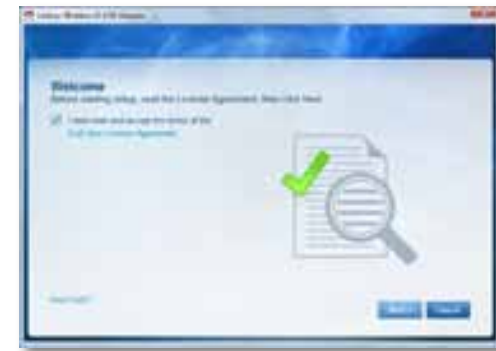
- a. Type **Computer** at the main screen, then click **Computer** when it appears in the *Apps* list.
- b. Double-click your CD or DVD drive.

### Windows 7 and Windows Vista

- a. Click **Start**, then click **Computer**.
- b. Double-click your CD or DVD drive.

### Windows XP

- a. Click **Start**, then click **My Computer**.
  - b. Double-click your CD or DVD drive.
4. Follow the on-screen instructions to finish setting up your Linksys wireless adapter.



### Note

You need to run Setup only once to install your adapter. After you run Setup, your computer recognizes the adapter each time it is connected to your computer's USB port.

# Wireless Network Configuration

To configure the adapter's wireless connection settings, you can use:

- Wi-Fi Protected Setup™ (if your router, gateway, or access point supports it)
- Your computer's wireless network configuration utility
- Your operating system's built-in wireless network setup

## Wi-Fi Protected Setup

### To connect using Wi-Fi Protected Setup:

1. Press the **Wi-Fi Protected Setup** button on your wireless router, gateway, or access point.
2. Within two minutes, press and hold the **Wi-Fi Protected Setup** button on the side of your adapter for at least three seconds. The LED flashes while connecting, then stays solid when the connection is complete.



Wi-Fi Protected Setup button

## Wireless network configuration utility


If your computer has a wireless network configuration utility installed, refer to that utility's documentation for instructions.

## Operating system's built-in wireless network setup

Follow the instructions in the appropriate section below to use your operating system's built-in utility:

- "Windows 8" on page 3
- "Windows 7" on page 4
- "Windows Vista" on page 5
- "Windows XP" on page 7


### Windows 8

After you have installed the adapter, move your mouse pointer to the lower-right corner of the screen, then click **Settings**. Click the wireless network icon . The *Network* menu opens from the right side of the screen, showing you available wireless networks and your current connection status.



## New Wireless Connection


### To connect to a different wireless network:

1. Move your mouse pointer to the lower-right corner of the screen, then click **Settings**.
2. Click the wireless network icon . The *Network* menu opens, showing you available wireless networks and your current connection status.



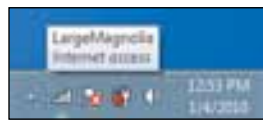
3. If prompted, enter any additional required network information (such as password).

## Windows 7

After you have installed the adapter, the *Wireless Network Configuration* utility icon appears on your computer's system tray. (If you do not see the icon, click the *Show hidden icons* arrow  in the system tray.)



When your mouse pointer hovers over the icon, the status information of your wireless connection appears.



## New Wireless Connection

### To connect to a different wireless network:

1. Click the **Wireless Network Configuration** utility icon. A list of available wireless networks appears.



2. Select your network, and then click **Connect**.

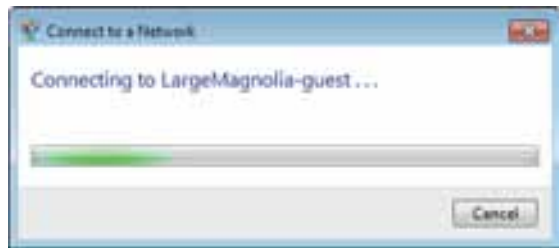


If your network does not use wireless security, your computer now connects to the wireless network, and you are done.

3. Enter the Wi-Fi Protected Access (WPA/WPA2) passphrase or the Wired Equivalent Privacy (WEP) key (depending on your type of security), then click **OK**.



This screen appears while the adapter connects to your network. Do not cancel, unless you want to end the connection.



Your computer is now connected to your wireless network.

#### Note

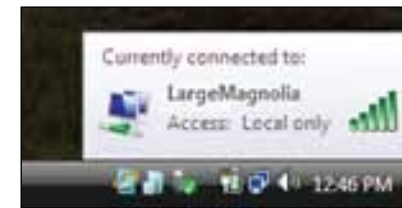
For help with the Wireless Network Configuration utility, click **Start**, then click **Help and Support**.

## Windows Vista

After you have installed the adapter, the *Wireless Network Configuration* utility icon appears on your computer's system tray.



When your mouse pointer hovers over the icon, the status information of your wireless connection appears.



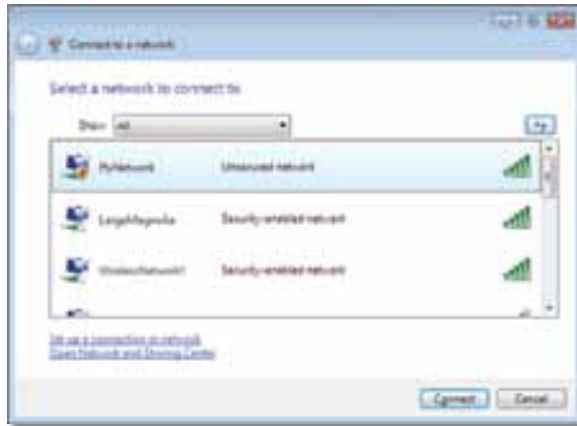
## New Wireless Connection

**To connect to a different wireless network:**

1. Right-click the **Wireless Network Configuration** utility icon.
2. Click **Connect to a network**.



3. Select your network, then click **Connect**.



4. If your network uses wireless security, go to Step 5.  
If your network does **not** use wireless security, this screen appears. Click **Connect Anyway** and go to Step 6.



5. Enter the Wi-Fi Protected Access (WPA/WPA2) passphrase or the Wired Equivalent Privacy (WEP) key (depending on your type of security), then click **Connect**.

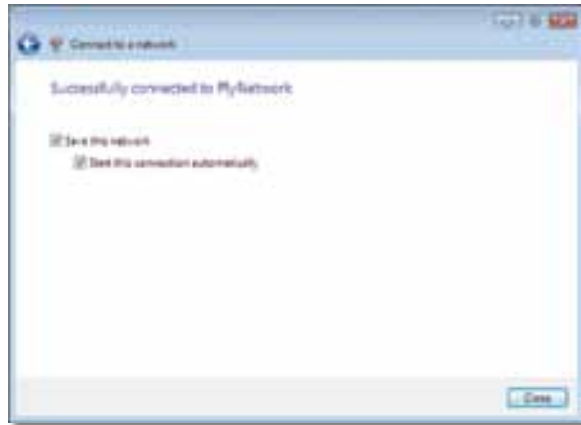


This screen appears while the adapter connects to your network. Do not cancel, unless you want to end the installation.





This screen appears when you are connected to your network.



6. If you want to save your settings, select **Save this network**.
7. Click **Close**.

The *Set Network Location* screen may appear. This screen helps apply the correct settings for your type of location.



- a. Click **Home**, **Work**, or **Public location**, then click **Close** on the resulting screen.

#### Note

For help with the Wireless Network Configuration utility, click **Start**, then click **Help and Support**.

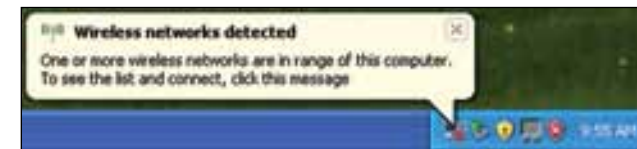
Your computer is now connected to your wireless network.

## Windows XP

After you have installed the adapter, the **Windows XP Wireless Zero Configuration Utility** icon appears on your computer's system tray.



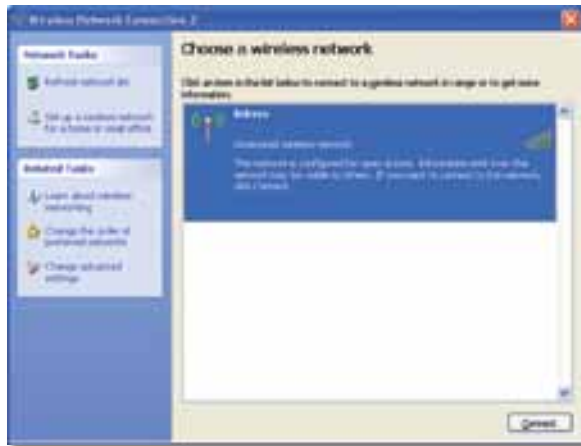
When your mouse pointer hovers over the icon, the status information of your wireless connection appears.



## New Wireless Connection

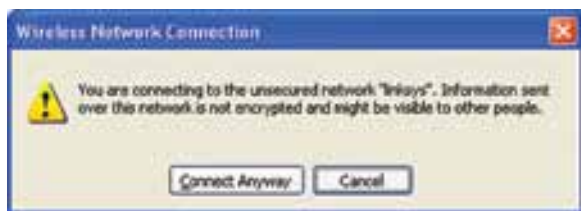
### To connect to a new wireless network:

1. Right-click the **Windows XP Wireless Zero Configuration** icon in your computer's system tray, then click **View Available Wireless Networks**. A window displays the available wireless networks.
2. Select the network that you want, then click **Connect**.



If the network uses wireless security, go to Step 4. Otherwise, continue to Step 3.

3. Click **Connect Anyway** to connect the adapter to your unsecured network. Your computer now connects to the wireless network, and you are done.



4. If your network uses Wired Equivalent Privacy (WEP) wireless security, enter the WEP Key in the *Network key* and *Confirm network key* fields. If your network uses Wi-Fi Protected Access (WPA/WPA2) wireless security, enter the passphrase in the *Network key* and *Confirm network key* fields. Click **Connect**.



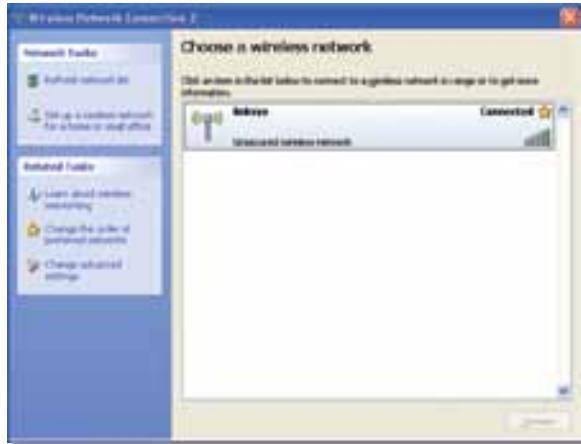
### Note

Windows XP Wireless Zero Configuration does not support the use of a WEP passphrase. Enter the exact WEP key used by your wireless router or access point.

### Note

If your network is using WPA2 security, make sure that you have installed the Update for Windows XP (KB893357), available at [www.microsoft.com](http://www.microsoft.com).

Your wireless network will appear as *Connected* when your connection is active.

**Note**

For help with the Wireless Network Configuration utility, click **Start**, then click **Help and Support**.

Your computer is now connected to your wireless network.

# Troubleshooting

---

## Linksys AE6000

### ***Your computer does not recognize the adapter.***

- Make sure that the adapter is properly inserted into your computer's USB port.
- Connect the adapter into a different USB port.

### ***Your computer cannot communicate with the other computers on your wireless network.***

- Make sure that the computers are powered on.
- Make sure that the adapter is configured with the same Wireless Network Name (also called the SSID or Service Set Identifier) and wireless security settings as the other computers on your wireless network.

#### **Note**

If your questions are not addressed here, refer to our support section on the web at [Linksys.com/support](http://Linksys.com/support).

# Specifications

## Linksys AE6000

<b>Model Number</b>	<b>AE6000</b>
Standards	802.11a, 802.11b, 802.11g, 802.11n, 802.11ac
Interface	USB 2.0
LED	Link/Activity
Antennas	1 Internal dual-band
Button	Wi-Fi Protected Setup
Security features	WEP, WPA & WPA2 Personal, WPA & WPA2 Enterprise, WPS
Security key bits	Up to 128-Bit Encryption
OS requirements	Windows XP, Windows Vista, Windows Vista 64-bit Edition, Windows 7, Windows 7 64-bit, Windows 8, Windows 8 64-bit

### Environmental

Dimensions	1.38" x 0.59" x 0.32" (35 x 15 x 8 mm)
Weight	0.14 oz (4 g)
Certification	FCC, CE, IC, UL, RoHS, WEEE, IDA, C-Tick, Wi-Fi A/B/G/N/AC
Operating temperature	32 to 104°F (0 to 40°C)
Storage temperature	-4 to 158°F (-20 to 70°C)
Operating humidity	10 to 85% Noncondensing
Storage humidity	5 to 90% Noncondensing

Specifications are subject to change without notice.

Visit [linksys.com/support](http://linksys.com/support) for award-winning 24/7 technical support



Cisco, the Cisco logo, and Linksys are trademarks or registered trademarks of Cisco and/or its affiliates in the United States and other countries. A listing of Cisco's trademarks can be found at [www.cisco.com/go/trademarks](http://www.cisco.com/go/trademarks). All other trademarks mentioned in this document are the property of their respective owners.

© 2013 Cisco and/or its affiliates. All rights reserved.

3425-01631B

130218MS