



55LS460E

LED TV

LED Commercial Widescreen The LG EzSign TV



FEATURES

The Best Award winner from the Commercial Integrator magazine for digital signage hardware, the LG EzSign TV is an innovation in digital signage that can entertain while maximizing the impact of your message. Create your own signage content by using your PC and the free EzSign software. Transfer that content by either using USB drive or wirelessly with optional Wi-Fi dongle and plug it in to the EzSign TV to run content in the form of a billboard - no additional hardware is needed. Advertisement, information, and a live television broadcast can be arranged on the same screen to attract attention and deliver specific messaging to your customers.

Digital Signage Function with Free S/W
Wireless content upload with optional Wi-Fi dongle

Time Scheduling available

ENERGY STAR 5.3 & RoHS COMPLIANT



SMART ENERGY SAVING

DYNAMIC CONTRAST RATIO
1,000,000:1

NATIVE DISPLAY RESOLUTION
(1920 x 1080)

INTELLIGENT SENSOR

CLEAR VOICE II

PICTURE WIZARD II

CLOSED CAPTION

INVISIBLE SPEAKER SYSTEM

LG'S EXCLUSIVE TRIPLE XD ENGINE

USB 2.0 MEDIA HOST FOR PHOTOS AND MUSIC

SIMPLINK (HDMI CEC)

USB CLONING

Public Display Settings - Cloning Capable

Multi Remote IR Code

3 HDMI™ INPUTS WITH HDCP

2 YEAR LIMITED WARRANTY (parts and labor)

*NOTE: Contact your LG Sales representative on the RJP's that are compatible with the LS460E series.

ENERGY GUIDE

The estimated annual energy cost determined in accordance with 16 CFR Part 305.5 for models 55LS460E is \$15, respectively.

**Your energy cost depends on your utility rates and use. The estimated cost is based on 11 cents per kWh and 5 hours of use per day. For more information, visit www.ftc.gov/energy."

*FTC Television labeling rule (18 CFR Part 305, as added by 76 Fed. Reg. 1038 (Jan 6, 2011)).

LGsolutions.com



LG

Life's Good



LIFE'S GOOD...

WHEN IT'S GREEN.

LG is committed to improving product development, manufacturing and usage to meet the demand for environmentally friendlier products. Our LS460E televisions have technologies to reduce power consumption and in return increase **cost savings** per room. We've also placed limits in the amounts of harmful materials used in these televisions.

- **EcoSmart**
Energy Saving Levels - Manually select your choice for the brightness level for the television.
- **RoHS Compliant** - Meets directive on restriction of hazardous substances.
- **Energy Star 5.3 Qualified** - Meets current reduction requirements of energy consumption.

FEATURES

LG'S SIGNAGE TECHNOLOGY MEETS THE TELEVISION LG EZSIGN TV

COST EFFECTIVE. SIMPLE. HIGHLY EFFECTIVE.



COST EFFECTIVE

No need to buy a media player - Create your own signage content by using your PC and the free EzSign software. Transfer that content by using a USB flash drive and plug it in to the EzSign TV to run it



CUSTOMIZED TO YOUR NEEDS - Signage content can be specific to your business

The LG EzSign TV allows you to create your own signage content and make revisions on the fly.



FAST AND EASY - Edit content quickly and easily

Select one of the pre-installed content templates. Apply images and add texts on it. It's that simple.



VARIETY - Pick and choose from a broad range of template designs

The LG EzSign TV gives you the power to choose and change according to your needs.

FREE LG EZSIGN SOFTWARE V2.0 - Simple 4 step procedure

WIRELESS CONTENT DELIVERY

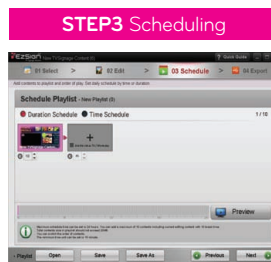
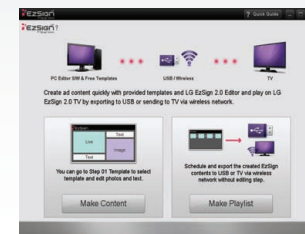
Manually select your choice for the brightness level for the television. By selecting Minimum, Medium, or Maximum, the power consumption will be reduced and an increase in energy savings can be achieved. (Note: Selecting minimum level may slightly increase power consumption on some models)



EZSIGN SOFTWARE VERSION 2.0

Make Content: Starting with first step, you can create and export content.

Make Playlist: You can export created content files without editing a template. You can easily schedule your content displaying.



PUBLIC DISPLAY SETTINGS

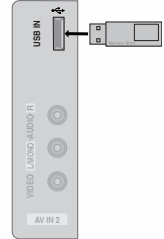
When used in public areas, these HDTVs can be easily programmed by the installer to have the TV turn on at a specified channel/volume level, set the minimum/maximum volume, lock out the control panel/remote, set the aspect ratio, and return to a factory reset. By using Power Management, these displays can be programmed to turn off if there has been no activity (remote or control panel buttons) for a preset time (1-7) hours.

Public Display Setting

Public Display Mode	No
Start Channel	No
Ch. Type	TV
Major	2
Minor	0
Minimum Volume	0
Maximum Volume	100
Start Volume Level	No 20
Power Management Setting	No 1
Key Management	0
Factory Reset	0
Aspect Ratio	0

USB CLONING

USB cloning will allow for easy transfer of Public Display Settings from the "Master TV" to an unlimited number of same type televisions.



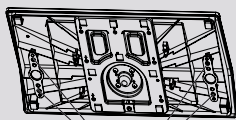
invisible SPEAKER

SOUND IS HEARD, NOT SEEN

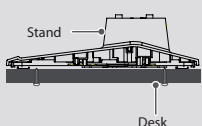
Enjoy a combination of smart technology and stylish design with the invisible speaker system custom tuned by audio expert Mr. Mark Levinson. This unique system provides a clean, polished look and an enhanced auditory experience by increasing the sweet spot and providing a wider sound field.



MOUNTING HOLES ON STAND ATTACHING THE TV TO A DESK

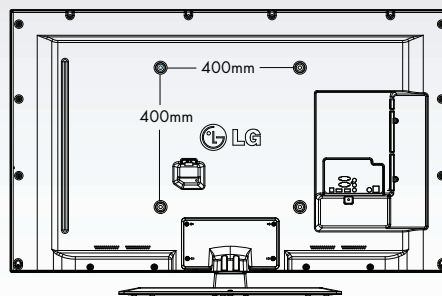
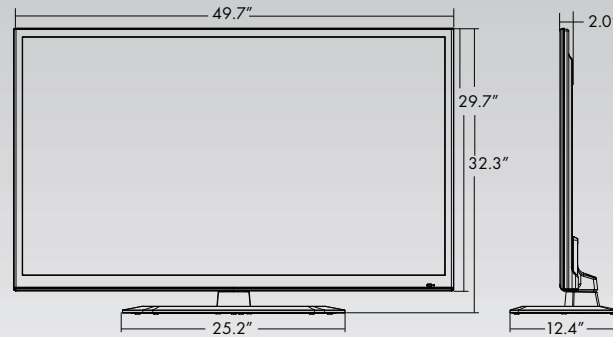


4-Screws
(Not provided as parts of the product)

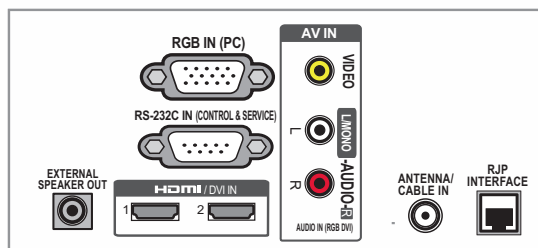


DIMENSIONS

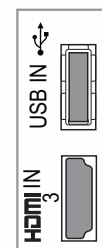
55LS460E



REAR JACK PANEL



SIDE JACK PANEL



55LS460E

55" class (54.6" measured diagonally)

SPECIFICATIONS

LCD SPECIFICATION

LED Backlighting	Edge LED
Screen Size	55" class (54.6" measured diagonally)
Native Display Resolution	1920 x 1080
Dynamic Contrast Ratio	1,000,000:1
Frame Rate	60HZ

AUDIO

Infinite Sound	Yes
Clear Voice II	Yes
Pro:Centric	EzSignTV
Hotel Mode	Yes (PDM)
IR Out	Yes (RS-232C)
External Speaker Out	Yes
RJP Interface	Yes
USB(2.0)	Yes
USB Cloning	Yes

SPECIAL FEATURES

Multi IR Code (Bed 1/2 Function)	Yes
Welcome Screen (Splash Image)	Yes
Auto Off / Auto Sleep	Yes
Video Mute	Yes
Smart Energy Saving	Yes
RoHS Compliant	Yes
Swivel Stand	Yes (± 20 degrees)
VESA Compatible	Yes (400mm x 400mm)

INTERFACE

HDMI In	2 (Rear), 1 (Side)
RS-232C (Control & Service)	1 (Rear)
RF In	1 (Rear)
AV In	1 (Rear)
RGB In	1 (Rear)
USB 2.0	1 (Side)
External Speaker Out	1 (Rear)

POWER

Voltage, Hz	100V - 240V, 50/60 Hz
Stand-by Mode	Under 1W
Dynamic/Static Power Savings	Yes
Power Consumption (with Power Saving Modes Disabled)	Typical 73.9W

DIMENSIONS & WEIGHT

TV without stand (WxHxD)	49.7" x 29.7" x 1.4"
TV with stand (WxHxD)	49.7" x 32.4" x 12.4"
Shipping Dimensions (WxHxD)	61.8" x 34.7" x 7.5"
TV without stand weight	48.3 lbs
TV with stand weight	56.2 lbs
Shipping weight	68.8 lbs

SERVICE/LIMITED WARRANTY 2 Year (Parts/Labor)**UPC CODE**

55LS460E 7 19192 90397 5

Required PC spec for installation: Pentium M or 4 CPU, 512MB RAM, Windows XP sp2, 200MB HDD

LGSolutions.com



LG Electronics U.S.A., Inc.
HE BEB Division
2000 Millbrook Drive
Lincolnshire, IL 60069

Customer Service: 888.865.3026
www.LGSolutions.com/support

Contact your LG Regional Sales Representative
Channel: 800.897.8871
Hospitality: 800.228.1236
E-mail: info@LGSolutions.com



LG
Life's Good



All screen images are simulated. Dimensions and weights are approximate. Design, features and specifications subject to change without notice.

© Copyright 2012 LG Electronics USA, Inc. All Rights Reserved. "LG Life's Good" is a registered trademark of LG Corp. XD Engine is a registered trademark of LG Electronics, Inc. HealthView and EcoSmart are trademarks of LG Corp. ENERGY STAR is a registered trademark of the U.S. Environmental Protection Agency. Dolby and the double-D symbol are registered trademarks of Dolby Laboratories. SRS and the SRS symbol, TruSurround XT and WOW are trademarks or registered trademarks of SRS Labs, Inc. VESA is a trademark of Video Electronics Standards Association. All other product and brand names are trademarks or registered trademarks of their respective companies.

Printed in the USA. September 2012 LED TV is LCD TV with LED backlighting

SPEC_55LS460E_081218_PR