

# Digi TransPort® WR44

Enterprise Class Wi-Fi to Cellular Router

Enterprise class, commercial grade Wi-Fi to cellular router with flexible interface options ideal for mobile and transportation applications.



## Overview

The Digi TransPort WR44 cellular router is an all-in-one mobile communications solution with true enterprise-class routing, security and firewall. This multifunction cellular router features a flexible design with integrated Wi-Fi access point, USB, serial and 4-port Ethernet switch, as well as a variety of configuration options including multiple serial ports (async or sync), GPS or I/O telemetry modules.

The Digi TransPort family offers an advanced routing, security and firewall feature set including stateful inspection firewall and integrated VPN. Enterprise-class protocols incorporate BGP, OSPF and VRRP+, a patented technology built upon the popular VRRP failover standard providing true auto sensing, auto failure and auto recovery of any line drop.

Digi TransPort WR44 is ideal for transportation and mobile applications. Flexible power options include 11-58 VDC barrel or molex connectors for direct integration into vehicle applications. Digi Remote Manager provides easy setup, configuration and maintenance of large installations of Digi TransPort devices.

### Related Products



Digi TransPort® VC7400  
VPN Concentrator

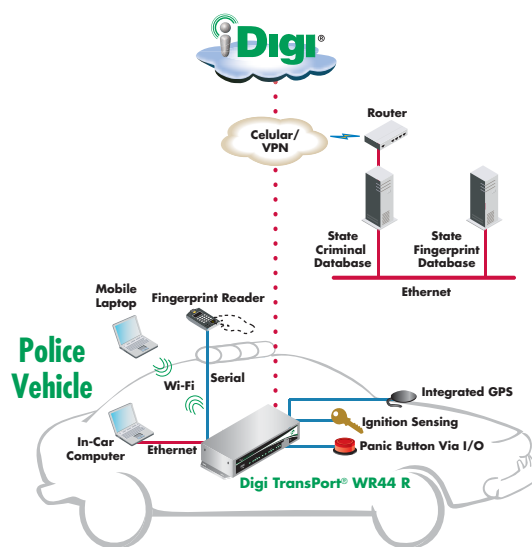


Digi Remote  
Manager™



Accessories

### Application Highlight



### Features/Benefits

- Enterprise class cellular routers with advanced dynamic routing, security and firewall features
- High speed cellular interfaces: GSM GPRS/EDGE/HSPA/CDMA EV-DO
- Optional integrated 802.11 b/g Wi-Fi access point and 4-port Ethernet switch
- Flexible interfaces including serial (async/sync), GPS, USB and telemetry, with flexible DC power options
- Powerful integrated end user programming
- Digi Remote Manager software for easy setup, configuration, and maintenance
- Available in industrial and commercial grade platforms



# Specifications

# Digi TransPort® WR44

## Interfaces

### Serial

Async Port Type	1 DB-9 RS-232 built-in; 3 RJ-45 RS-232 (option)
Sync Port Type	1 Sync/Async DB-25 RS-232/422/485 (option)
Signal Support	TXD, RXD, RTS, CTS, DTR, DSR, DCD, RI (No DSR/RI for RJ-45)
Flow Control	Software (XON/XOFF), Hardware supported

### Ethernet

Ports	4-port auto switch with auto MDI/MDX options (configurable non-switch/mini-switch modes)
Specifications	IEEE 802.3 10/100 Base-T (auto-sensing) Full or Half duplex

### Other

Wi-Fi (option)	802.11b/g access point; Open or Shared key authentication; WEP (64 and 128 bit) encryption; WPA/WPA2 authentication (pre-shared keys) with TKIP and AES encryption; Support for multiple access point mode; 2 x 50 Ω RP-SMA (Center pin - on device: male; on antenna: female; external)
GPS (option)	50 channel GPS engine (-163 dB sens.); NMEA 0183 V2.3 sentence output; 50 Ω SMA (Center pin - on device: female; on antenna: male) with +3.3 VDC active antenna drive; NMEA stream to local serial port or over TCP/IP; Galileo ready
Telemetry	1 digital input built-in (via Molex connector); I/O telemetry module option (1 relay, 1 digital in, 4 digital out)
USB Host Port	1 Type A connector for expansion; Support for full or low speed

## General Features

Status LEDs	Ethernet, Power on, Cellular link/activity, Signal strength, Wi-Fi
Mounting	Bulkhead mount, Wall mount and DIN rail options available
Security/VPN	SSL, SSLv2, SSLv3, FIPS 197, L2T, L2TP, (5 tunnels included - 50 max.); IPsec with IKEv1, IKEv2, ISAKMP; DES, 3DES and AES up to 256-bit encryption; Simple Certificate Enrollment Protocol (SCEP) for X.509 certificates, Open VPN and PPTP
Router/Firewall	NAT/NAT-Traversal, NAPT forwarding; IP Routing Protocols: PPP, GRE, RIP (v1 & v2), OSPF, SRI, BGP; IP Failover: VRF, VRRP, VRRP+™; VLAN support; Stateful inspection firewall with scripting; Access control lists; Modbus over UDP/TCP; DHCP; SNAIP; Dynamic DNS client compatible with BIND9/No-IP/DynDNS; Automatic failover/failback to second GSM network/Standby APN
Sync	Sync tunneling: LAPB, RAW SNA; X.25/X.28; TPAD, APACS30, X.25, X.28, PAD, X.29, X.31, X.21, XOT, Datawire VXN™, SSL
Management	HTTP, FTP, SMTP, SNMP (V1/V2c/V3), SSH, Telnet and CLI for web management; Remote management via software tool (option); SMS management
Local Programming	Python, ScriptBasic, Modbus TCP
Dimensions (L x W x H)	5.7 in x 8.3 in x 1.6 in (145 mm x 210 mm x 40 mm)
Weight	1.98 lb (900 g)
Other	Standard dual SIM (SIM protection cover optional)

## RF Features

### GSM Models

GPRS	GPRS Class 10 Quadband 850/900/1800/1900 MHz
EDGE	GPRS Class 10/EDGE class 10 Quadband 850/900/1800/1900 MHz

# Specifications

# Digi TransPort® WR44

## GSM Models - Continued

HSDPA/HSUPA/UMTS	U2 model: 900/1900/2100 MHz with Rx Diversity U4 model: 850/1900/2100 MHz with Rx Diversity U5 model: 850/900/1900/2100 MHz with Rx Diversity
Antenna	HSDPA/HSUPA/UMTS: 2 X 50 $\Omega$ SMA (Center pin - on device: female; on antenna: male) * GPRS/EDGE: 1 X 50 $\Omega$ SMA (Center pin - on device: female; on antenna: male)

## CDMA Models

EV-DO Rev A	Dualband 800/1900 MHz with Rx Diversity
Antenna	2 x 50 $\Omega$ SMA (Center pin - on device: female; on antenna: male)

## Power Requirements

Power Input	11-58 VDC
Power Supply	Commercial model: 100-240 VAC 50/60 Hz with barrel connector Industrial model: Ships only with molex style cable with bare wire leads
Power Consumption	Typical: 10 W Max: 12 W

## Environmental

Operating Temperature	Industrial model: -20° C to +70° C (-4° F to +158° F) Commercial model: 0° to +55° C (+32° F to +131° F)
Relative Humidity	20% to 95% (non-condensing)
Ethernet Isolation	1.5 kV
Serial Port Protection (ESD)	15 kV

## Approvals

Mobile Certifications - GSM/UMTS	PTCRB, NAPRD.03, GCF-CC, R&TTE, EN 301 511
Mobile Certifications - CDMA/EV-DO	CDG TIA/EIA-690, CDG TIA/EIA-98-E
Wireless Carrier Certifications	Certified by most major carriers. See <a href="http://www.digi.com">www.digi.com</a> for current listing.
Safety	UL 60950, CSA 22.2 No. 60950, EN60950
Emissions/Immunity	CE, FCC Part 15 Class B (FCC identifier GGL-R1902G), AS/NZS CISPR 22, EN55024, EN55022 Class A
Vehicle Related Certifications	2004/104/EC, 2005/49/EC, 2005/83/EC, 2006/28/EC, 72/245/EEC, ISO7637-2 Class C



# About Digi Remote Manager™

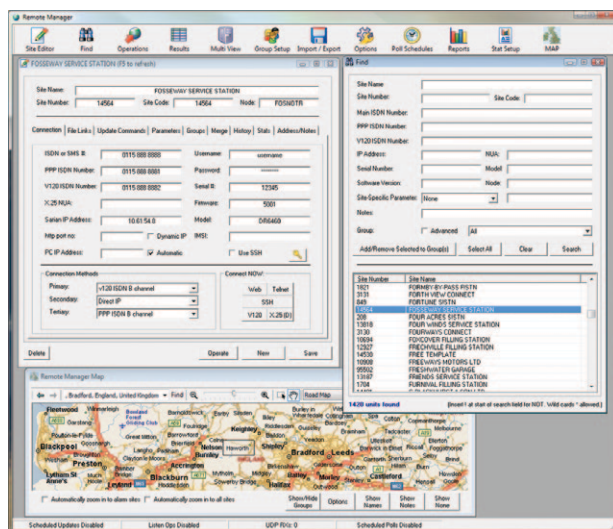
## Enterprise Class Remote Device Management

Digi Remote Manager is an enterprise class management and administration system for the Digi TransPort family of products. It monitors your Digi TransPort network and makes it easy to connect to remote devices for ad-hoc maintenance or scheduled configuration updates. It has full reporting features that allow you to monitor the performance of your network (transactions per hour, cellular latency, etc.) and present the results as easy-to-read charts and Microsoft® Office Word documents. In addition, Digi Remote Manager can work with Microsoft® MapPoint® to provide a geographic overview of your network and highlight any sites which have issues.

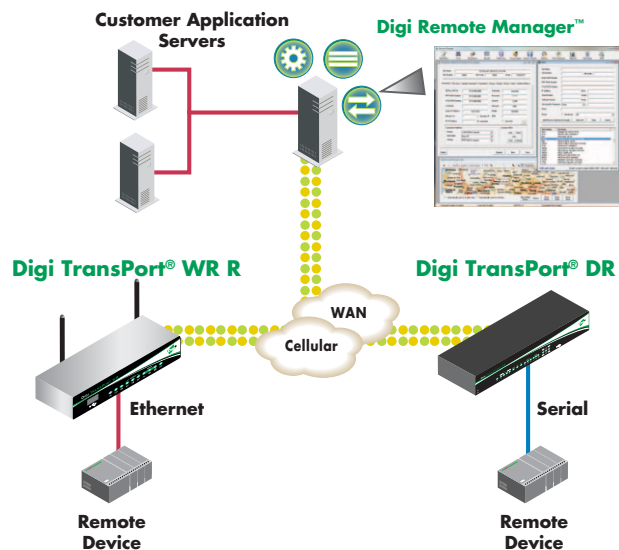
## Features

- View of all remote devices and their connection status
- Automatic registration of newly connected devices
- Remote device configuration
- XML-based (Web Services) messaging and storage functionality from cusomter application to managed device
- Actions include device grouping and scheduling of operations
- Monitoring of user specified events
- Device statistic and report generation
- Alarm generation and alerting
- Secure access to all devices from web browser, anywhere
- Remote reboot of device and default reset

## Easy, Web Based Configuration



Easy-to-use interface for remote management of Digi TransPort routers



Visit [www.digi.com](http://www.digi.com) for part numbers.

**DIGI SERVICE AND SUPPORT** - You can purchase with confidence knowing that Digi is here to support you with expert technical support and a strong five-year warranty. [www.digi.com/support](http://www.digi.com/support)

**Digi International  
Worldwide HQ**  
877-912-3444  
952-912-3444

**Digi International  
France**  
+33-1-55-61-98-98  
[www.digi.fr](http://www.digi.fr)

**Digi International  
Japan**  
+81-3-5428-0261  
[www.digi-intl.co.jp](http://www.digi-intl.co.jp)

**Digi International  
India**  
+91-80-4287-9887

**Digi International  
Singapore**  
+65-6213-5380

**Digi International  
China**  
+86-21-5150-6898  
[www.digi.cn](http://www.digi.cn)



91001557  
82/112

BUY ONLINE • [www.digi.com](http://www.digi.com)

© 2009-2012 Digi International Inc.  
All rights reserved. Digi, Digi International, the Digi logo, the Making Wireless M2M Easy logo, Digi TransPort and Digi Remote Manager are trademarks or registered trademarks of Digi International Inc. in the United States and other countries worldwide. All other trademarks are the property of their respective owners.

[info@digi.com](mailto:info@digi.com)

