

# Digi TransPort® WR21

Compact Enterprise Class Cellular Router

Compact, flexible, low-cost enterprise 2.5G/3G/4G cellular router for remote and mobile networking applications.



## Overview

Digi TransPort WR21 is a full-featured cellular router offering the flexibility to scale from basic connectivity applications to enterprise class routing and security solutions. With its high-performance architecture, Digi TransPort WR21 provides primary and backup connectivity and is designed for Wide Area Network connectivity including 2.5G/3G/4G networks and beyond. Optional Gobi™ module provides true HSPA/EV-DO carrier diversity in a single solution.

Flexible power and connectivity options, along with extended temperature ranges make Digi TransPort WR21 a versatile solution for both commercial and industrial environments.

Digi TransPort WR21 is available in both standard routing and enterprise configurations. The standard version offers basic routing, NAT and security, while the enterprise version adds advanced routing, security/VPN and stateful firewall. Advanced features allow the Digi TransPort WR21 to be used as a component of a PCI compliant network.

Digi management solutions provide easy setup, configuration and maintenance of large installations of remote Digi TransPort devices. iDigi® Manager Pro™ offers web-based device management for remote Digi cellular routers and gateways. Also available is the windows based Digi Remote Manager™ for customer installed device management and reporting.

### Related Products



VPN Concentrators

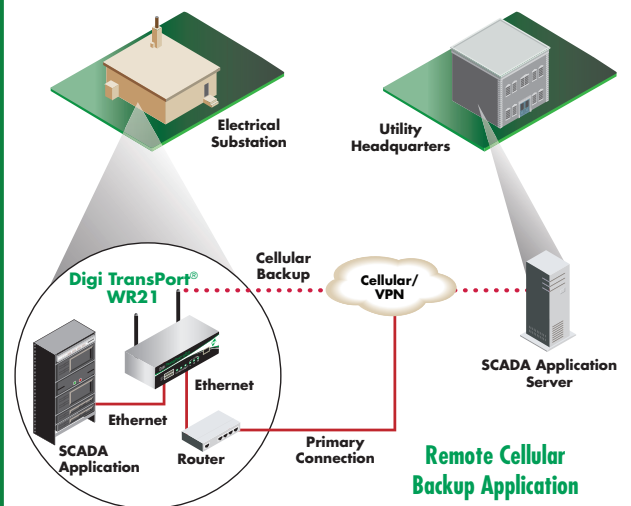


Digi Remote Management



Accessories

### Application Highlight



### Features/Benefits

- Compact, low-cost, flexible cellular routing platform with standard and enterprise feature sets
- Standard option includes basic routing and IP filtering; Enterprise option includes advanced routing protocols, VPN and stateful firewall
- High-performance architecture, flexible power and extended operating temperature
- 2.5G/3G/4G cellular interface including: GSM: EDGE, HSPA, HSPA+ and CDMA: 1xRTT, EV-DO
- RS-232 serial and 10/100 Ethernet or RS-232/422/485 serial and 2-port Ethernet switch
- Digi remote management software solutions (including the iDigi® Device Cloud™ service) provide easy setup, configuration and maintenance of large installations

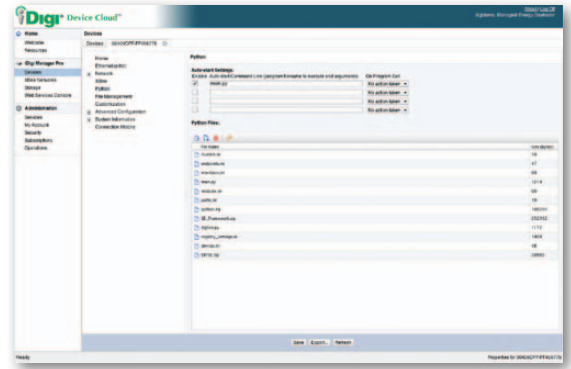
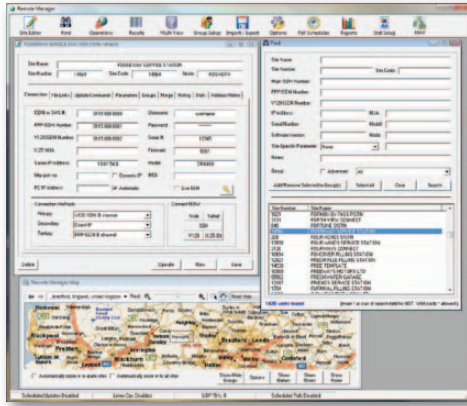


# About Digi TransPort Remote Management Solutions

## Digi Remote Manager™

## iDigi® Manager Pro™

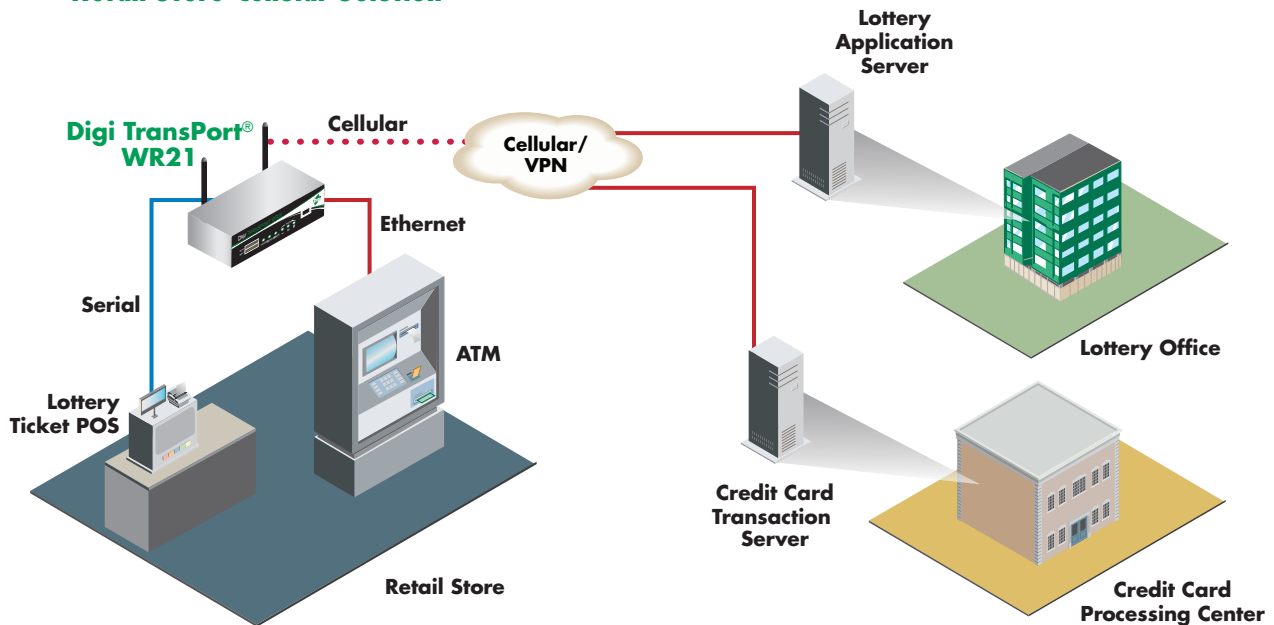
Graphical Interface



<b>Product Description</b>	Digi Remote Manager is an enterprise class management and administration system for the Digi TransPort family of products. It makes management of large numbers of devices easier by providing a central platform for support personnel to access and modify remote devices.	iDigi Manager Pro is a Digi-hosted management software that provides visibility and control over remote devices in a scalable, pay-as-you-use model. iDigi Manager Pro delivers capabilities that empower IT, network operations and customer support organizations to conquer the challenges of managing the vast array of equipment in their M2M networks.
<b>System Requirements</b>	Windows (customer installed)*	Cloud hosted services
<b>Basic Remote Management</b>	Configuration, Monitoring, Firmware updates	
<b>Advanced Remote Management</b>	Logging, Troubleshooting, Scripting, Reports	No
<b>Number of Devices</b>	1000+	Unlimited
<b>Web Services Option</b>	No	Yes

\* For information on Windows installation please visit our technical support site on [www.digi.com](http://www.digi.com).

## Retail Store Cellular Solution



*Digi TransPort WR21 allows multiple devices in a retail environment to communicate over a secure cellular connection*

## Specifications

## Digi TransPort® WR21

### General Features

Mounting	Bulkhead mount, Wall mount, DIN rail options available
Status LEDs	Cellular service, WWAN, Power, Ethernet link/activity, Signal strength (3 bars)
Dimensions (L x W x H)	3.9 in x 5.2 in x 1.3 in (10 cm x 13.1 cm x 3.2 cm)
Weight	1.08 lb (0.49 kg)

### Power Requirements

Power Input	9-30 VDC
Power Supply	100-240 VAC 50/60 Hz: With locking barrel connector or terminal block connector
Power Supply Operating Temperature	Standard Temp Power Supply: 0° C to +40° C; Extended Temp Power Supply: -35° C to +75° C
Power Consumption	6 W max, 4 W typ

### Environmental

Operating Temperature	-35° C to +75° C with reduced cellular performance; Reduced cellular performance may occur above +60° C
Relative Humidity	20% to 95% (non-condensing)
Ethernet Isolation	1.5 kV
Serial Port Protection (ESD)	1.5 kV

### Approvals

Mobile Certifications - GSM/UMTS	PTCRB, NAPRD.03, GCF-CC, R&TTE, EN 301 511
Mobile Certifications - CDMA/EV-DO	CDG TIA/EIA-690, CDG TIA/EIA-98-E
Wireless Carrier Certifications	Certified by most major carriers. See <a href="http://www.digi.com">www.digi.com</a> for current listing.
Safety	UL 60950, CSA 22.2 No. 60950, EN60950
Emissions/Immunity	CE, FCC Part 15 Class B (FCC identifier GG-L R1902G), AS/NZS CISPR 22, EN55024, EN55022 Class A

## Software Options

Features	Standard	Enterprise (includes Standard feature set)
Local Programming	Python	
Protocols	HTTP, HTTPS, FTP, SFTP, SSL, SMTP, iDigi, SNMP (v1/v2c/v3), SSH, Telnet and CLI for web management; remote management via software tool (option); SMS management, protocol analyzer, ability to capture PCAP for use with Wireshark; DynDNS	Same as Standard; Dynamic DNS client compatible with BIND9/No-IP/DynDNS
Security/Firewall/VPN	IP Filtering	RADIUS TACACS+, SSL, SSLv2, SSLv3, FIPS 197, L2TP, (5 tunnels included); IPSec with IKEv1, IKEv2, ISAKMP; DES, 3DES and AES up to 256-bit encryption; SCEP for X.509 certificates, Open VPN client and server, PPTP; IPSec/PPP/L2TP VPN Server support; Stateful inspection firewall with scripting; Open VPN client and server; Content Filtering (via 3rd party)
Routing	NAT, NATP	Bridging, NAT/NAT-Traversal, NAPT forwarding; PPP, PPPoE, GRE; IP Routing Protocol, PPP, GRE, RIP (v1 & v2) OSPF, SRI, BGP; IP Failover: VRRP, VRRP+TM; VLAN support; STP (Spanning Tree Protocol); DHCP; Automatic failover/failback to second GSM network/Standby APN; Optional IPv6; iGMP routing (multicast); IP pass-through (advanced)
Specialty Protocol	RealPort	RealPort; Modbus UDP/TCP to Serial; Legacy Protocols (X.25 (including XOT), SNA/IP, TPAD and PAD); Protocol switch

# Specifications

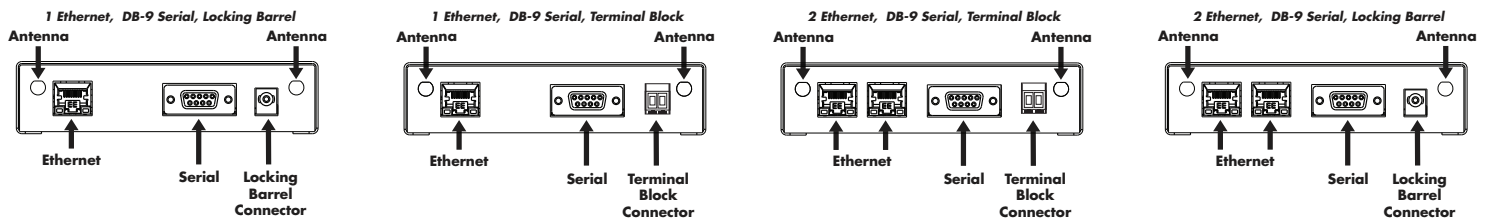
# Digi TransPort® WR21

Interfaces	
<b>Ethernet</b>	
Ports	1 Ethernet or 2 Ethernet, with Auto MDI/MDX options (configurable non-switch/switch mode)
Specifications	IEEE 802.3 10/100 Base-T (auto-sensing) Full or Half duplex
<b>Serial</b>	
Serial Port	1 DB-9: RS-232 or RS-232/422/485
Signal Support	TXD, RXD, RTS, CTS, DTR, DSR, DCD, RI (RS-422/485 and sync signals available on request)
Flow Control	Hardware and software flow control
COM Port Redirector	Digi patented RealPort®
<b>Other</b>	
USB Host Port	1 Type A connector; High-speed USB 2.0
<b>RF Features*</b>	
<b>GSM Models</b>	
EDGE	GPRS Class 10, Quadband 850/900/1800/1900 MHz
HSDPA/HSUPA/UMTS	850/1900/2100 or 900/2100 MHz with Rx Diversity; Optional multi-mode HSPA/EV-DO Gobi support
HSPA+	850/900/1900/2100 MHz with Rx Diversity
Antenna	HSPA/HSPA+/UMTS: 2 x 50 Ω SMA (Center pin - on device: female; on antenna: male), EDGE: 1 x 50 Ω SMA (Center pin - on device: female; on antenna: male)
SIM	2 SIM card (SIM cover plate option available)
<b>CDMA Models</b>	
CDMA/EV-DO Rev A	Dualband 800/1900 MHz with Rx Diversity; Optional multi-mode HSPA/EV-DO Gobi support; 450 MHz, 3.1 Mbps down / 1.8 Mbps up, R-UIM support
Antenna	2 x 50 Ω SMA (Center pin - on device: female; on antenna: male)

\* Technology will depend on model ordered and carrier availability.

## Digi TransPort WR21 - Rear Views

Images shown refer to HSPA/HSPA+/UMTS models. All other models come with one antenna.



Visit [www.digi.com](http://www.digi.com) for part numbers.

**DIGI SERVICE AND SUPPORT** - You can purchase with confidence knowing that Digi is here to support you with expert technical support and a strong five-year warranty. [www.digi.com/support](http://www.digi.com/support)

**Digi International  
Worldwide HQ**

877-912-3444  
952-912-3444

**Digi International  
France**

+33-1-55-61-98-98  
[www.digi.fr](http://www.digi.fr)

**Digi International  
Japan**

+81-3-5428-0261  
[www.digi-intl.co.jp](http://www.digi-intl.co.jp)

**Digi International  
India**

+91-80-4287-9887

**Digi International  
Singapore**

+65-6213-5380

**Digi International  
China**

+86-21-5150-6898  
[www.digi.cn](http://www.digi.cn)



91001738  
A7/412

BUY ONLINE • [www.digi.com](http://www.digi.com)

© 2011 - 2012 Digi International Inc. All rights reserved. Digi, Digi International, the Digi logo, the Making Wireless M2M Easy logo, Digi TransPort, RealPort, Digi Remote Manager, iDigi, iDigi Device Cloud and iDigi Manager Pro are trademarks or registered trademarks of Digi International Inc. in the United States and other countries worldwide. All other trademarks are the property of their respective owners. All information provided is subject to change without notice.

[info@digi.com](mailto:info@digi.com)

