

NEC 2x2 LCD TileMatrix™ Video Wall Solutions

40"/46"/52" NEC Professional-Grade LCD Display/Mounting System/Cabling/Power Suppression



NEC Display Solutions' complete 2x2 LCD TileMatrix Video Wall Solutions provide for an all-in-one, easy-to-configure solution that is ideal for dynamic digital signage, information display and command & control applications.

Exclusive TileMatrix and TileComp™ technologies, combined with the thin-bezel design of NEC large-screen displays, provide for a near seamless video wall without the need for additional third-party equipment. When compared to 82"-108" single-screen displays, NEC's video wall solutions deliver a more cost-effective and easier-to-transport and install alternative for your application.

LCD technology alleviates downfalls affiliated with rear-projection and plasma displays. This includes improved color and brightness uniformity as well as full HD resolution (X462UN WXGA native) for stunning video clarity.

Solution Features and Benefits

TileMatrix technology is integrated into each NEC display within the bundle, allowing for easy manipulation of a single picture to 2x2 format

TileComp works in tandem with TileMatrix to compensate for the bezel width and create a more seamless video wall

Copy function allows the user to apply the settings from one display to all others in the RS-232 daisy chain, reducing setup time and saving money (null modem cables included)

Thin-bezel design provides for some of the smallest bezel widths in the industry (7.3mm screen-to-screen width for X462UN and 31mm for P401, 33.5mm for P461 and 38mm for P521)

Industry's most extensive display control, including RS-232, Ethernet connectivity, NaViSet software and DDC/CI standard

Rapid Response™ technology delivers virtually uninterrupted, undistorted viewing of high-speed, full-motion video

Thermal protection panel contains an extra air gap and heat dissipation layer designed to distribute heat more uniformly across the LCD layer, minimizing the risk of image retention

Fan-based technology connected to internal heat sensors automatically turns on when temperatures reach certain thresholds. Designed to work in both portrait and landscape orientations, these fans can be always on or controlled remotely.

Real-time clock allows for content scheduling and monitor sleep/wake management, improving energy savings and extending display life

NaViSet™ software utilizes the monitor's advanced control and diagnostics capabilities to provide AV and IT professionals with remote access to monitor settings over their existing network

Mounting system is compact and slim, which allows the displays to be mounted as close to the wall as possible (Digital Factory PerfectAlign for P401, P461 and P521; Chief 2x2 wall mount for X462UN-TMX4D)

Overframe Bezel Kit completes your solution by offering a "finished & framed" look (two kits included with the X462UN-TMX4D)

Remote Control and Ambient Light Sensor Kit provides the entire video wall with one sensor that detects ambient light and delivers simple remote control functionality (included with the X462UN-TMX4D)

DVI daisy chain option board allows for easy digital loop-through of video signal (four included)

Tripp Lite surge suppressor features six outlets and prevents crashes, reboots and performance problems

TARGET MARKETS

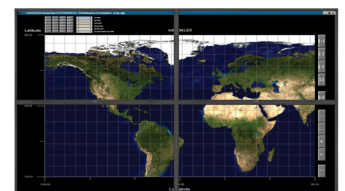
Public Information & Digital Signage

- Retail advertising/branding
- Hospitality
- Corporate lobbies
- FIDS/GIDS/BIDS
- Tradeshows
- Houses of worship
- Higher education



Command & Control

- Utilities
- Defense
- Homeland Security
- Weather stations
- Call centers
- Traffic management
- Broadcast stations
- NOCs



NEC 2x2 LCD TileMatrix Video Wall Solutions

NEC Large-Screen LCDs

Your digital signage applications will never look the same. The 40" P401, 46" P461, 46" X462UN and 52" P521 give your messages and images the "wow factor" they need to reach audiences with maximum impact. In addition to the exclusive Digital Signage Technology Suite, which boasts more than 30 advanced features, these displays tout a thin bezel for tiled-wall configurations, a built-in expansion slot that future-proofs them for emerging technologies and HD resolution that turns heads and draws crowds. In addition, the bundled solution onsite service ensures that a comparable new or refurbished LCD unit will be replaced by a technician within one business day of a customer's call. This coverage provides quick turnaround times for displays that require replacing.*



Model	P401	P461	P521	X462UN
Display				
Viewable Image Size (Diagonal)	40"	46"	52"	46"
Native Resolution	1920 x 1080			1366 x 768
Brightness (Typical)	500 cd/m ²			
Contrast Ratio (Typical)	3000:1	4000:1	2000:1	3000:1
Input Terminals				
Digital	DisplayPort, HDMI, DVI-D			
Analog	Analog D-sub, 5BNC (RGBHV), BNC Composite, RCA Composite (Y, Cb/Pb, Cr/Pr), S-Video			
Audio	RCA Audio x 2, DisplayPort Audio, HDMI Audio			
External Control	RS-232, RJ-45 LAN, DDC/CI, IR Remote			
Output Terminals				
Analog	5 BNC (RGBHV), BNC Component			
Audio	Stereo Mini-Jack, RCA Audio, External Speaker x 2			Stereo Mini-Jack, RCA Audio
External Control	RS-232, IR Remote			
Net Weight (without stand)				
	64.8 lbs. / 29.4 kg	79.6 lbs. / 36.1 kg	83.3 lbs. / 37.8 kg	64.6 lbs. / 29.3 kg

NEC V461



90mm

NEC P461



33mm

NEC X462UN



7.3mm

The X462UN's ultra-narrow bezel allows for a screen-to-screen distance between two neighboring displays of only 7.3mm, a more than 1200% improvement over the standard bezel width from NEC's 90mm V Series and close to 450% compared to its previously revolutionary 33mm P Series displays.



to build video walls up to 10x10



for window pane effect



for 178° wide-angle viewing



for full-motion video



to calibrate to same profile



to achieve consistent color performance

Included Cables

Qty. 1

DVI-D Male to DVI-D Male 5m cable used for connecting video source to first display



Qty. 4

DVI-D Male to DVI-D Male 2m cable used for daisy chaining digital video signal through video wall (included in box with SB-L008WU)

Qty. 3

D-Sub 9-pin Female to D-Sub 9-pin Female 6m null modem cable used for daisy chaining control signals through the video wall



DVI Daisy Chain Option Board

Qty. 4

Allows for a digital video loop through from screen to screen (SB-L008WU)



Tripp Lite surge suppressor

- Features six outlets/6-ft. cord
- \$50,000 Ultimate Lifetime Insurance (US/CDN)
- Network grade surge suppression rated at 2350 joules/97,000 amps
- Prevents system crashes, reboots and performance issues
- Keyhole mounting tabs allow permanent installation
- Lighted power switch confirms power on/off status
- Widely spaced outlets accommodate up to four large transformer plugs without blocking outlets



* Not applicable in all countries. Terms and conditions apply. Contact an NEC representative for more details.

Designed to support NEC's thin-bezel large-screen LCD displays, this mounting system allows installers to quickly assemble any video wall configuration imaginable. Easy to install and very simple to maintain, this mounting system ensures that every display is "perfectly aligned" the first time. The P401, P461 and P521 use Digital Factory's PerfectAlign, while the X462UN uses Chief's 2x2 system.