

# NEC MultiSync® 70 Series

15" - 24" thin-frame LCDs  
ideal for corporate environments



**Work smarter with intelligent display designs and technologies.** With each new generation of LCD monitors, NEC Display Solutions finds new ways to build upon its tradition of incorporating intelligent technologies, ergonomic designs and value-add services. These are the advantages that allow users to work smarter and enterprises to reduce total cost of ownership. With the NEC MultiSync 70 Series, a family of high-performance flat-panel monitors, the tradition continues with displays that showcase bright screens, low power consumption and enhanced features that deliver tremendous quality and value to your desktop. The end result for you is increased comfort, reduced costs and maximized productivity on a daily basis.

The series, which currently features twelve LCD models in 15" to 24" screen sizes and the choice of a silver and white or all black cabinet (on most models), offers performance-driven business and home users flexible, reliable monitor solutions that meet virtually any need.

**Screen-enhancing features.** The MultiSync 70 Series incorporates many components aimed at making the user's time in front of the monitor more productive and comfortable. NEC's Rapid Response™ technology, available on all MultiSync 70 Series models, provides for lifelike full-motion video display with response times as quick as 5ms. Rapid Response delivers streaming video, while virtually eliminating ghosting or blurring. This remarkably quick motion makes these models better than ever for gaming and video applications such as presentations and streaming web video. No Touch Auto Adjust™ eliminates the hassle of adjusting screen controls when first connecting to a new system. When turning on these monitors for the first time, the monitor and video card communicate to automatically adjust screen settings for optimal viewing. The LCD1970VX, LCD2070NX, LCD2170NX and the widescreen LCD2070WVX, LCD2470WVX and LCD2470WNX also utilize Dynamic Video Mode to enhance the screen's contrast based on the brightness of the image displayed.

**Wide compatibility for today and tomorrow.** With Ambix® dual-input technology—which utilizes both DVI-D and traditional 15-pin VGA connectors—you can bridge the gap between analog and digital systems by allowing the same monitor to work seamlessly in either environment. Ambix provides compatibility with today's computer systems and is on the forefront of tomorrow's digital output. Digital technology allows for connection with any signal in a preset range, regardless of the frequency output of the video card. Also, because no digital-to-analog conversion is necessary, signal loss is virtually eliminated, resulting in superior picture quality. A standard in the industry for many years, the easy-to-recognize VGA connector ensures hassle-free equipment swaps during technology upgrades.

**Take your control a step further.** Our exclusive NaViSet™ software (available by download) offers an intuitive graphical user interface that allows the user to adjust On Screen Display (OSD®) settings via mouse and keyboard instead of using the monitor's up-front buttons. This second generation software provides animated graphics and test patterns to help guide the user through adjustments for the MultiSync 70 Series. For an unprecedented level of control, NaViSet Administrator software for IT professionals (available upon request) contains Windows® Management Instrumentation™ (WMI) for remote control and diagnostics maintenance for all installed, compatible MultiSync 70 Series units. This software provides IT personnel remote access to the monitor and its settings without disrupting the user. All of these control capabilities are made possible using the advanced remote diagnostics and remote control capabilities of the Display Data Channel/Command Interface (DDC/CI). This allows control commands to be sent directly to the monitor by the local system or remotely over an existing network (LAN) by a system administrator. In order to take full advantage of these benefits, users must employ a DDC/CI-compatible graphics card and be running Windows 2000/XP.

As part of the redesigned control button arrangement, users can also take advantage of the multi-directional NaViKey™ on the

*In addition to its productivity-increasing widescreen design and compliance with Windows® Vista Premium, the 24" MultiSync LCD2470WVX and LCD2470WNX feature a 4-way ergonomic stand (pivot, tilt, height-adjustment and swivel) to expand your viewing options.*



bottom of the monitor bezel to adjust screen settings. This key, which has not only allowed for a thinner frame around the screen but has helped reduce the number of control buttons required, provides an easier means of reaching your preferred display settings.

**Bright ideas in design.** MultiSync 70 Series monitors, which feature slim footprints and thin, uniform frames, have been designed for easy, flexible integration into a variety of surroundings, including cramped areas and ergonomically challenged work spaces. This user-friendly design enables you to focus more on what is on-screen, enhancing not only your visual experience but your overall productivity. The thin-frame design makes these models ideal for multiple-monitor configurations, which further enhance user productivity. The built-in power supply eliminates the need for a bulky power brick and the cables it requires, which can clutter your work space. An ergonomically enhanced base allows for up to 110mm of height adjustment and features capabilities for cable management, tilting, swiveling and pivoting (LCD1970VX, LCD1970NX, LCD2070VX, LCD2070NX, LCD2170NX, LCD2470WVX, LCD2470WNX), easily adjusting to each user's preferred angle of vision and further increasing comfort, productivity and ease of use. Users also can choose between silver and white or all black cabinets, allowing them to match their display to systems, laptops or work environments. (LCD2170NX available only in black).

The 20.1" MultiSync LCD2070WVX and 24" MultiSync LCD2470WVX and LCD2470WNX (pictured above) deliver an entirely new perspective to your desktop. With their wide-format design (16:10 aspect ratio), which provides roughly the same work area as two smaller-sized displays, you can simultaneously view/work in multiple application windows.

**Easy peripheral connections with a USB hub.** The MultiSync LCD1770NX, LCD1770NXM,



*Offering 110mm of height adjustment and capabilities for cable management, tilting and swiveling, the base adjusts to your preferred viewing orientation.*



figure 1



figure 2

*MultiSync 70 Series models are designed to maximize your comfort and productivity. The multi-directional NaViKey on the bottom of the monitor bezel (figure 1) allows you to easily adjust screen settings, while an integrated 4-port USB 2.0 hub (figure 2), featured on select models, makes it easier than ever for you to connect to peripheral devices.*

LCD1970NX, LCD2070NX, LCD2070WNX and LCD2470WNX feature an integrated 4-port USB 2.0 hub (LCD2170NX features a 2-port USB 2.0 hub), making it easier than ever for you to connect to peripheral devices such as MP3 players, scanners, digital cameras and mice.

**Enhance your multimedia experience.** The Soundbar 70, which is included with the LCD1770NXM, boosts the senses with amazing sound during presentations or other display applications. This front-firing speaker attachment also is available as an option and can be added to the LCD1770NX, LCD1970NX, LCD2070VX, LCD2070NX and LCD2170NX (Soundbar 20W for the LCD2070WNX and LCD2470WNX), to easily add multimedia excitement to the desktop display experience.

**Intelligent power management ensures a smart investment.** All MultiSync 70 Series models comply with the Environmental Protection Agency's new ENERGY STAR 4.0 Tier 1 requirements, thereby providing only the most energy-efficient desktop performance. Using up to 70% less power and emitting less heat than comparable CRT monitors, these monitors allow you to conserve energy and lower your total cost of ownership. The high-efficiency backlight promotes an extraordinarily long lifetime, reducing not only the power consumption but also the heat

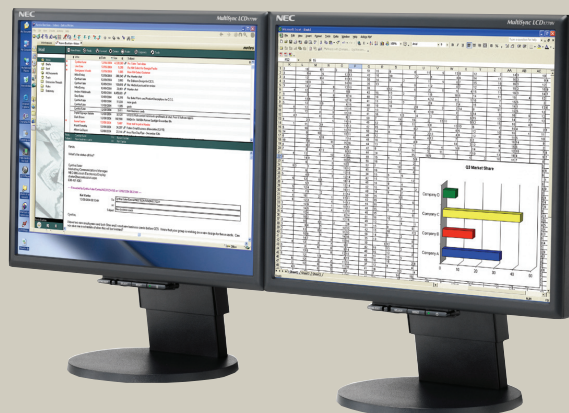
generation at the front of the screen. The vacation switch (available on select models) further reduces electricity costs by completely shutting down the monitor's power.

**Warranty and support provide assurance.** You can rest easy knowing that NEC Display Solutions is available 24 hours a day, 7 days a week for technical support, and a 3-year limited warranty on all models guarantees your satisfaction.

**Add value to your investment.** With Total Trade™, NEC Display Solutions' hassle-free monitor replacement and recycling program, we can facilitate the removal and disposal of your facility's current units in an environmentally friendly manner, while enhancing your desktops with new MultiSync 70 Series displays. Not only is your workload lightened, but you also have the potential to lower your procurement costs and your overall TCO.

Through our optional Premium Protect™ extended service plans, you can take advantage of 1 or 2 additional years of technical service and support, giving you peace of mind for up to 5 years of monitor ownership. The plans take effect at the end of the standard 3-year warranty period and cover all parts and labor that are available under the original warranty as well as lightning and power surge protection.

*The ultra-thin-frame design of the MultiSync 70 Series makes these models ideal for multi-monitor configurations. Studies have shown that setups using more than one monitor contribute to increased user productivity among many other benefits.*



## Series Features & Benefits

**Thin-frame design** allows you to view more of your ideas and less of the monitor bezel, while freeing up more horizontal and vertical desk-top space for multiple-monitor applications

**Height-adjustable stand** adds flexibility and comfort to your viewing preferences with swivel, tilt and cable management capabilities

**Rapid Response technology** delivers virtually uninterrupted, undistorted viewing of high-speed, full-motion video

**Dynamic Video Mode** enhances video and images with real-time optimization of brightness, color and contrast

**No Touch Auto Adjust** reduces setup time and provides optimal image settings upon initial power-on

**NaViSet software** offers an expanded and intuitive graphical interface, allowing you to more easily adjust OSD display settings via mouse and keyboard

**XtraView® technology** provides for some of the widest viewing angles available (LCD1970VX, LCD2070NX, LCD2170NX, LCD2470WNX)

**Ambix dual-input technology** allows for digital/analog compatibility with upgraded video cards and software as well as connection to two systems

**Integrated 4-port USB 2.0 hub** adds flexibility to your computing by easily connecting you to digital cameras, scanners and more (LCD1770NX, LCD1770NXM, LCD1970NX, LCD2070NX, LCD2070WNX, LCD2170NX [2-port], LCD2470WNX)

**Multi-directional NaViKey** allows for easy screen setting adjustments

**High-bright backlight** delivers superior performance for readability and clarity

**Adheres to ISO 13406-2 Class II requirements** for quality screen performance

**Detachable base and arm/wall mounting capabilities** allow you to free up even more desktop space or gain more aesthetic appeal

**ENERGY STAR 4.0 compliance/low power consumption** reduces electrical costs and lowers total cost of ownership

**Cabinet color options of silver and white or all black** allow you to match your system, laptop or work environment (except LCD2070VX, LCD2070NX, LCD2170NX and LCD2470WNX)

**Front-firing, multimedia Soundbar 70** provides quality sound (standard on LCD1770NXM; optional on LCD1770NX, LCD1970NX, LCD2070VX, LCD2070NX, LCD2170NX; LCD2070WNX, LCD2470WNX [Soundbar 20W])

**NEC's quality and reliability** provide peace of mind with a 3-year limited parts and labor warranty (including backlight) and 24/7 customer service and technical support

Model	MultiSync LCD1570NX	MultiSync LCD1770NX/VX*	MultiSync LCD1770NXM	MultiSync LCD1970VX	MultiSync LCD1970NX	MultiSync LCD2070VX	MultiSync LCD2070NX	MultiSync LCD2070WVX	MultiSync LCD2170NX	MultiSync LCD2470VX	MultiSync LCD2470WVX	
<b>Display</b>												
Viewable Image Size	15"	17"	17"	19"	19"	20.1"	20.1"	20"	21.3"	24"	24"	
Pixel Pitch	0.297mm	0.264mm	0.264mm	0.294mm	0.294mm	0.255mm	0.255mm	0.258mm	0.270mm	0.270mm	0.270mm	
Pixels Per Inch	85.5 @ native res.	96.2 @ native res.	96.2 @ native res.	86 @ native res.	86 @ native res.	100 @ native res.	100 @ native res.	98.4 @ native res.	94 @ native res.	94 @ native res.	94 @ native res.	
Brightness (typical)	250 cd/m <sup>2</sup>	250 cd/m <sup>2</sup>	250 cd/m <sup>2</sup>	300 cd/m <sup>2</sup>	250 cd/m <sup>2</sup>	300 cd/m <sup>2</sup>	300 cd/m <sup>2</sup>	300 cd/m <sup>2</sup>	300 cd/m <sup>2</sup>	400 cd/m <sup>2</sup>	500 cd/m <sup>2</sup>	
Contrast Ratio (typical)	450:1	600:1	600:1	800:1	1500:1	800:1	800:1	800:1	1000:1	1000:1	1000:1	
Viewing Angle (typical)	140 Vert., 160 Hor. (80U/80D/80L/80R) (CR > 5)	178 Vert., 178 Hor. (89U/89D/89L/89R) (CR > 5)	178 Vert., 178 Hor. (89U/89D/89L/89R) (CR > 5)	170 Vert., 176 Hor. (88U/88D/88L/88R) (CR > 5)	176 Vert., 176 Hor. (88U/88D/88L/88R) (CR > 10)	160 Vert., 160 Hor. (80U/80D/80L/80R) (CR > 10)	176 Vert., 176 Hor. (88U/88D/88L/88R) (CR > 10)	170 Vert., 176 Hor. (88U/88D/88L/88R) (CR > 5)	176 Vert., 176 Hor. (88U/88D/88L/88R) (CR > 10)	160 Vert., 160 Hor. (80U/80D/80L/80R) (CR > 10)	176 Vert., 176 Hor. (88U/88D/88L/88R) (CR > 10)	
Response Time (typical)	Rapid Response (16ms)	Rapid Response (5ms)	Rapid Response (5ms)	Rapid Response (5ms)	Rapid Response (20ms)	Rapid Response (5ms)	Rapid Response (16ms)	Rapid Response (5ms)	Rapid Response (8ms G-to-G)	Rapid Response (5ms)	Rapid Response (6ms G-to-G)	
Display Colors	More than 16 million	More than 16 million	More than 16 million	More than 16 million	More than 16 million	More than 16 million	More than 16 million	More than 16 million	More than 16 million	More than 16 million	More than 16 million	
<b>Synchronization Range</b>												
Horizontal	31.5-60 kHz (Analog/Digital)	31.5-81 kHz (Analog) 31.5-69 kHz (Digital)	31.5-81 kHz (Analog) 31.5-69 kHz (Digital)	31.5-81.1 kHz (Analog/Digital)	31.5-81.1 kHz (Analog/Digital)	31.5-83 kHz (Analog/Digital)	31.5-91.1 kHz (Analog/Digital)	31.5-82.3 kHz (Analog/Digital)	31.5-91.1 kHz (Analog/Digital)	31.5-93.9 kHz (Analog) 31.591.1 kHz (Digital)	31.5-93.9 kHz (Analog/Digital)	
Vertical	56-75 Hz	56-75 Hz	56-75 Hz	56-75 Hz	56-75 Hz	56-75 Hz	56-85 Hz	56-75 Hz	56-85 Hz	56-85 Hz	56-85 Hz	
<b>Input Signal</b>												
Video	ANALOG 0.7 Vp-p / 75 Ohms	ANALOG 0.7 Vp-p / 75 Ohms	ANALOG 0.7 Vp-p / 75 Ohms	ANALOG 0.7 Vp-p / 75 Ohms	ANALOG 0.7 Vp-p / 75 Ohms	ANALOG 0.7 Vp-p / 75 Ohms	ANALOG 0.7 Vp-p / 75 Ohms	ANALOG 0.7 Vp-p / 75 Ohms	ANALOG 0.7 Vp-p / 75 Ohms	ANALOG 0.7 Vp-p / 75 Ohms	ANALOG 0.7 Vp-p / 75 Ohms	
Sync	Separate sync: TTL Level (Positive/Negative) Composite sync: TTL Level (Positive/Negative) Composite sync on green: (0.3 Vp-p negative, 0.7 Vp-p positive)	Separate sync: TTL Level (Positive/Negative) Composite sync: TTL Level (Positive/Negative) Composite sync on green: (0.3 Vp-p negative, 0.7 Vp-p positive)	Separate sync: TTL Level (Positive/Negative) Composite sync: TTL Level (Positive/Negative) Composite sync on green: (0.3 Vp-p negative, 0.7 Vp-p positive)	Separate sync: TTL Level (Positive/Negative) Composite sync: TTL Level (Positive/Negative) Composite sync on green: (0.3 Vp-p negative, 0.7 Vp-p positive)	Separate sync: TTL Level (Positive/Negative) Composite sync: TTL Level (Positive/Negative) Composite sync on green: (0.3 Vp-p negative, 0.7 Vp-p positive)	Separate sync: TTL Level (Positive/Negative) Composite sync: TTL Level (Positive/Negative) Composite sync on green: (0.3 Vp-p negative, 0.7 Vp-p positive)	Separate sync: TTL Level (Positive/Negative) Composite sync: TTL Level (Positive/Negative) Composite sync on green: (0.3 Vp-p negative, 0.7 Vp-p positive)	Separate sync: TTL Level (Positive/Negative) Composite sync: TTL Level (Positive/Negative) Composite sync on green: (0.3 Vp-p negative, 0.7 Vp-p positive)	Separate sync: TTL Level (Positive/Negative) Composite sync: TTL Level (Positive/Negative) Composite sync on green: (0.3 Vp-p negative, 0.7 Vp-p positive)	Separate sync: TTL Level (Positive/Negative) Composite sync: TTL Level (Positive/Negative) Composite sync on green: (0.3 Vp-p negative, 0.7 Vp-p positive)	Separate sync: TTL Level (Positive/Negative) Composite sync: TTL Level (Positive/Negative) Composite sync on green: (0.3 Vp-p negative, 0.7 Vp-p positive)	Separate sync: TTL Level (Positive/Negative) Composite sync: TTL Level (Positive/Negative) Composite sync on green: (0.3 Vp-p negative, 0.7 Vp-p positive)
<b>Inputs</b>	DVI-D and VGA 15 pin D-sub	DVI-D and VGA 15 pin D-sub	DVI-D and VGA 15 pin D-sub	DVI-D and VGA 15 pin D-sub	DVI-D and VGA 15 pin D-sub	DVI-D and VGA 15 pin D-sub	DVI-D and VGA 15 pin D-sub	DVI-D and VGA 15 pin D-sub	DVI-D and VGA 15 pin D-sub	DVI-D w/ HDCP and VGA 15 pin D-sub	DVI-D w/ HDCP and VGA 15 pin D-sub	
<b>Resolutions Supported</b>	ANALOG/DIGITAL 640x480 @ 60.75 Hz 720x400 @ 70 Hz 800x600 @ 56.75 Hz 832x624 @ 75 Hz 1024x768 @ 60.75 Hz	ANALOG/DIGITAL 640x480 @ 60.75 Hz 720x400 @ 70 Hz 800x600 @ 56.75 Hz 832x624 @ 75 Hz 1024x768 @ 60.75 Hz 1152x864 @ 70.75 Hz 1280x960 @ 60.75 Hz 1280x1024 @ 60.75 Hz	ANALOG/DIGITAL 640x480 @ 60.75 Hz 720x400 @ 70 Hz 800x600 @ 56.75 Hz 832x624 @ 75 Hz 1024x768 @ 60.75 Hz 1152x864 @ 75 Hz 1280x960 @ 60 Hz 1280x1024 @ 60.75 Hz	ANALOG/DIGITAL 640x480 @ 60.75 Hz 720x400 @ 70.85 Hz 800x600 @ 56.85 Hz 832x624 @ 75 Hz 1024x768 @ 60.85 Hz 1152x870 @ 75 Hz 1280x960 @ 60 Hz 1280x1024 @ 60.75 Hz	ANALOG/DIGITAL 640x480 @ 60.85 Hz 720x400 @ 70.85 Hz 800x600 @ 56.85 Hz 832x624 @ 75 Hz 1024x768 @ 60.85 Hz 1152x870 @ 75 Hz 1280x960 @ 60 Hz 1280x1024 @ 60.75 Hz	ANALOG/DIGITAL 640x480 @ 60.85 Hz 720x400 @ 70 Hz 800x600 @ 56.85 Hz 832x624 @ 75 Hz 1024x768 @ 60.85 Hz 1152x864 @ 75 Hz 1280x960 @ 60 Hz 1280x1024 @ 60.75 Hz	ANALOG/DIGITAL 640x480 @ 60.85 Hz 720x350 @ 70 Hz 800x600 @ 56.85 Hz 832x624 @ 75 Hz 1024x768 @ 60.85 Hz 1152x870 @ 75 Hz 1280x960 @ 60 Hz 1280x1024 @ 60.85 Hz 1440x900 @ 60.75 Hz 1440x1050 @ 60.75 Hz 1600x1200 @ 60 Hz	ANALOG/DIGITAL 640x480 @ 60.85 Hz 720x350 @ 70 Hz 800x600 @ 56.85 Hz 832x624 @ 75 Hz 1024x768 @ 60.85 Hz 1152x864 @ 75 Hz 1280x960 @ 60.75 Hz 1280x1024 @ 60 Hz 1400x900 @ 60.85 Hz 1440x1050 @ 60.85 Hz 1600x1200 @ 60 Hz	ANALOG/DIGITAL 640x480 @ 60.75 Hz 720x350 @ 70 Hz 800x600 @ 56.75 Hz 832x624 @ 75 Hz 1024x768 @ 60.75 Hz 1152x864 @ 75 Hz 1280x960 @ 60.75 Hz 1280x1024 @ 60 Hz 1440x900 @ 60.85 Hz 1440x1050 @ 60.75 Hz 1600x1200 @ 60 Hz	ANALOG/DIGITAL 640x480 @ 60.85 Hz 720x350 @ 70 Hz 800x600 @ 56.85 Hz 832x624 @ 75 Hz 1024x768 @ 60.85 Hz 1152x870 @ 75 Hz 1280x960 @ 60 Hz 1280x1024 @ 60 Hz 1400x900 @ 60.85 Hz 1440x1050 @ 60.85 Hz 1600x1200 @ 60 Hz	ANALOG/DIGITAL 640x480 @ 60.85 Hz 720x350 @ 70 Hz 800x600 @ 56.85 Hz 832x624 @ 75 Hz 1024x768 @ 60.85 Hz 1152x870 @ 75 Hz 1280x960 @ 60 Hz 1280x1024 @ 60 Hz 1400x900 @ 60.85 Hz 1440x1050 @ 60.85 Hz 1600x1200 @ 60 Hz	ANALOG/DIGITAL 640x480 @ 60.85 Hz 720x350 @ 70 Hz 800x600 @ 56.85 Hz 832x624 @ 75 Hz 1024x768 @ 60.85 Hz 1152x870 @ 75 Hz 1280x960 @ 60 Hz 1280x1024 @ 60 Hz 1400x900 @ 60.85 Hz 1440x1050 @ 60.85 Hz 1600x1200 @ 60 Hz
<b>Native Resolution</b>	1024x768 @ 75 Hz	1280x1024 @ 60 Hz	1280x1024 @ 60 Hz	1280x1024 @ 60 Hz	1280x1024 @ 60 Hz	1600x1200 @ 60 Hz	1600x1200 @ 60 Hz	1680x1050 @ 60 Hz	1600x1200 @ 60 Hz	1920x1200 @ 60 Hz	1920x1200 @ 60 Hz	
<b>Additional Features</b>	Thin-frame (bezel), No Touch Auto Adjust, NaViSet software, sRGB, AccuColor color control, digital smoothing, digital controls, Plug and Play (VESA DDC 1/2B), VESA DPMS power management, OSD user controls, ISO 13406-2 Class II, height-adjustable stand, tilt, swivel, Ambix, Windows Vista-certified	Thin-frame (bezel), No Touch Auto Adjust, NaViSet software, USB 2.0 (NX), sRGB, AccuColor color control, digital smoothing, digital controls, Plug and Play (VESA DDC 1/2B), VESA DPMS power management, OSD user controls, ISO 13406-2 Class II, height-adjustable stand, tilt, swivel, Ambix, Windows Vista-certified	Thin-frame (bezel), No Touch Auto Adjust, NaViSet software, USB 2.0, sRGB, AccuColor color control, digital smoothing, digital controls, Plug and Play (VESA DDC 1/2B), VESA DPMS power management, OSD user controls, ISO 13406-2 Class II, height-adjustable stand, tilt, swivel, Ambix, Windows Vista-certified	Thin-frame (bezel), No Touch Auto Adjust, NaViSet software, sRGB, AccuColor color control, digital smoothing, digital controls, Plug and Play (VESA DDC 1/2B), VESA DPMS power management, OSD user controls, ISO 13406-2 Class II, vacation switch, height-adjustable stand, tilt, swivel, pivot, Ambix, Windows Vista-certified	Thin-frame (bezel), No Touch Auto Adjust, NaViSet software, USB 2.0, sRGB, AccuColor color control, digital smoothing, digital controls, Plug and Play (VESA DDC 1/2B), VESA DPMS power management, OSD user controls, ISO 13406-2 Class II, vacation switch, height-adjustable stand, tilt, swivel, pivot, XtraView, Ambix, Windows Vista-certified	Thin-frame (bezel), No Touch Auto Adjust, NaViSet software, sRGB, AccuColor color control, digital smoothing, digital controls, Plug and Play (VESA DDC 1/2B), VESA DPMS power management, OSD user controls, ISO 13406-2 Class II, vacation switch, height-adjustable stand, tilt, swivel, pivot, XtraView, Ambix, Windows Vista-certified	Thin-frame (bezel), No Touch Auto Adjust, Dynamic Video Mode, NaViSet software, USB 2.0, sRGB, AccuColor color control, digital smoothing, digital controls, Plug and Play (VESA DDC 1/2B), VESA DPMS power management, OSD user controls, ISO 13406-2 Class II, vacation switch, height-adjustable stand, tilt, swivel, pivot, XtraView +, Ambix, Windows Vista-certified	Thin-frame (bezel), No Touch Auto Adjust, Dynamic Video Mode, NaViSet software, USB 2.0, sRGB, AccuColor color control, digital smoothing, digital controls, Plug and Play (VESA DDC 1/2B), VESA DPMS power management, OSD user controls, ISO 13406-2 Class II, vacation switch, height-adjustable stand, tilt, swivel, pivot, XtraView +, Ambix, Windows Vista-certified	Thin-frame (bezel), No Touch Auto Adjust, Dynamic Video Mode, NaViSet software, USB 2.0, sRGB, AccuColor color control, digital smoothing, digital controls, Plug and Play (VESA DDC 1/2B), VESA DPMS power management, OSD user controls, ISO 13406-2 Class II, vacation switch, height-adjustable stand, tilt, swivel, pivot, XtraView +, Ambix, Windows Vista-certified	Thin-frame (bezel), No Touch Auto Adjust, Dynamic Video Mode, NaViSet software, USB 2.0, sRGB, AccuColor color control, digital smoothing, digital controls, Plug and Play (VESA DDC 1/2B), VESA DPMS power management, OSD user controls, ISO 13406-2 Class II, vacation switch, height-adjustable stand, tilt, swivel, pivot, XtraView +, Ambix, Windows Vista-certified	Thin-frame (bezel), No Touch Auto Adjust, Dynamic Video Mode, NaViSet software, cable management, sRGB, AccuColor color control, digital smoothing, digital controls, Plug and Play (VESA DDC 1/2B), VESA DPMS power management, OSD user controls, ISO 13406-2 Class II, height-adjustable stand, tilt, swivel, pivot, Ambix, Windows Vista Premium-certified	Thin-frame (bezel), No Touch Auto Adjust, Dynamic Video Mode, NaViSet software, USB 2.0, cable management, sRGB, AccuColor color control, digital smoothing, digital controls, Plug and Play (VESA DDC 1/2B), VESA DPMS power management, OSD user controls, ISO 13406-2 Class II, height-adjustable stand, tilt, swivel, pivot, Ambix, Windows Vista Premium-certified
<b>Voltage Rating</b>	AC 100-120V/ AC 220-240V	AC 100-120V/ AC 220-240V	AC 100-120V/ AC 220-240V	AC 100-120V/ AC 220-240V	AC 100-120V/ AC 220-240V	AC 100-120V/ AC 220-240V	AC 100-120V/ AC 220-240V	AC 100-120V/ AC 220-240V	AC 100-120V/ AC 220-240V	AC 100-120V/ AC 220-240V	AC 100-120V/ AC 220-240V	
<b>Power Consumption (typical): On Power Savings Mode</b>	20W < 2W	36W < 2W	36W < 2W	36W < 2W	52W < 2W	44W < 2W	50W < 2W	53W < 2W	58W < 2W	91W < 2W	90W (USB off) < 2W	
<b>Net Dimensions (WxHxD): (with stand)</b>	13.2x12.15x7 in/ 336.4x305.380x 178mm	14.4x14.3x18.6x7.8 in/ 367.3x362.5x472.5x 198mm	14.4x14.5x18.6x7.8 in/ 367.3x368.6x472.5x 198mm	16.2x15.6x19.9x7.8 in/ 412.5x395.505x 220mm	16.2x15.6x19.9x7.8 in/ 412.5x395.505x 220mm	17.4x15.6x20.8x7.1 in/ 442x397.1x507.1x 220mm	17.4x15.6x20.8x7.1 in/ 442x397.1x507.1x 220mm	18.6x14.6x18.9x8.7 in/ 471.4x371.3x481.3x 220mm	18.3x16.2x20.3x8.7 in/ 466x406.2x516.2x 220mm	22x16.5x20.9x10.6 in/ 559x420.3x530.3x 270mm	22x16.5x20.9x10.6 in/ 559x420.3x530.3x 270mm	
<b>(without stand)</b>	13.2x10.3x2.2 in/ 336.4x261.9x56mm	14.4x12.5x2.3 in/ 367x317x59.5mm	14.4x13.7x2.3 in/ 367x347.6x59.5mm	16.2x13.7x2.6 in/ 412.5x347.5x66mm	16.2x13.7x2.6 in/ 412.5x347.5x66mm	17.4x13.5x2.8 in/ 442x342x71mm	17.4x13.5x2.8 in/ 442x342x71mm	18.6x12.1x3.3 in/ 471.4x306.9x84.8mm	18.3x14.2x2.8 in/ 466x360x71mm	22x14.4x3.9 in/ 559x366x98mm	22x14.4x3.9 in/ 559x366x98mm	
<b>Net Weight (with stand) (without stand)</b>	8.4 lbs/3.8 kg 6.2 lbs/2.8 kg	13.4 lbs/6.1 kg 9.5 lbs/4.3 kg	14.3 lbs/6.5 kg 10.4 lbs/4.7 kg	17.2 lbs/7.8 kg 10.8 lbs/4.9 kg	16.9 lbs/7.7 kg 10.6 lbs/4.8 kg	19.6 lbs/8.9 kg 12.8 lbs/5.8 kg	19.6 lbs/8.9 kg 12.6 lbs/5.7 kg	18.7 lbs/8.5 kg 12.6 lbs/5.7 kg	20.9 lbs/9.5 kg 14.1 lbs/6.4 kg	27.6 lbs/12.5 kg 18.5 lbs/8.4 kg	27.3 lbs/12.4 kg 18.3 lbs/8.3 kg	
<b>VESA Hole Configuration Specifications</b>	75mm x 75mm	100mm x 100mm	100mm x 100mm	100mm x 100mm	100mm x 100mm	100mm x 100mm	100mm x 100mm	100mm x 100mm	100mm x 100mm	100mm x 100mm	100mm x 100mm	
<b>Environmental Conditions:</b>												
Operating Temperature	5-35°C/41-95°F	5-35°C/41-95°F	5-35°C/41-95°F	5-35°C/41-95°F	5-35°C/41-95°F	5-35°C/41-95°F	5-35°C/41-95°F	5-35°C/41-95°F	5-35°C/41-95°F	5-35°C/41-95°F	5-35°C/40-104°F	
Operating Humidity	30-80%	10-80%	10-80%	30-80%	30-80%	30-80%	30-80%	30-80%	30-80%	30-80%	30-80%	
Storage Temperature	3048m/10,000 ft	4572m/15,000 ft	4572m/15,000 ft	3048m/10,000 ft	3048m/10,000 ft	4572m/15,000 ft	3658m/12,000 ft	3658m/12,000 ft	3658m/12,000 ft	4572m/15,000 ft	4572m/15,000 ft	
Storage Humidity	-10-60°C/14-140°F	-20-60°C/14-140°F	-20-60°C/14-140°F	-10-60°C/14-140°F	-10-60°C/14-140°F	-10-60°C/14-140°F	-10-60°C/14-140°F	-10-60°C/14-140°F	-10-60°C/14-140°F	-10-60°C/14-140°F	-10-60°C/14-140°F	
Storage Altitude	10-85%	5-95%	5-95%	10-85%	10-85%	10-85%	10-85%	10-85%	10-85%	10-85%	10-85%	
<b>Limited Warranty</b>	3 years parts and labor, including backlight	3 years parts and labor, including backlight	3 years parts and labor, including backlight	3 years parts and labor, including backlight	3 years parts and labor, including backlight	3 years parts and labor, including backlight	3 years parts and labor, including backlight	3 years parts and labor, including backlight	3 years parts and labor, including backlight	3 years parts and labor, including backlight	3 years parts and labor, including backlight	
<b>Technical Support</b>	24 hours/7 days	24 hours/7 days	24 hours/7 days	24 hours/7 days	24 hours/7 days	24 hours/7 days	24 hours/7 days	24 hours/7 days	24 hours / 7 days	24 hours / 7 days	24 hours / 7 days	

\* Aside from the USB 2.0 hub, LCD1770NX specs are identical to those of the LCD1770VX



Ambix, MultiSync, OSD and XtraView are registered trademarks and NaViKey, NaViSet, No Touch Auto Adjust, Total Trade, Rapid Response and Premium Protect are trademarks of NEC Display Solutions. All other brand or product names are trademarks or registered trademarks of their respective holders. Product specifications subject to change.

©2007 NEC Display Solutions of America, Inc. All rights reserved. Item No. 70series-1 7/07 ver. 11.

**NEC Display Solutions**  
500 Park Boulevard, Suite 1100  
Itasca, IL 60143  
866-NEC-MORE

