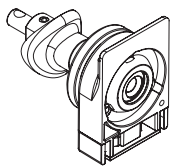
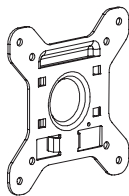


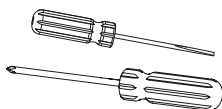
Component Checklist



Back to Back
VESA Ball Mount

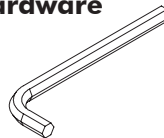


VESA Plate (x1)



NOTE: Phillips-head
screwdriver and Flat
screwdriver not supplied

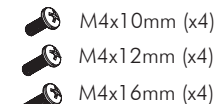
Hardware



3mm Allen Key



Security Screw (x1)
(optional)



**Display Mounting
Screws**

IMPORTANT INFORMATION:

! IMPORTANT - Install Spacedec POS Multi Back to Back as per Installation Instructions.

! This product supports a maximum load of 20kg (44lbs).

! This product supports VESA mounting hole configurations: 75x75mm and 100x100mm.

! The manufacturer accepts no responsibility for incorrect installation.

Step 1. Check Components

Check you have received all parts against the component checklist and Hardware above.

Step 2. Preparation

Choose from one of the following options:

A. New POS Height Adjustable Back to Back Installation

Prior to installing a **new** POS Multi Back to Back Assembly, you will need to:

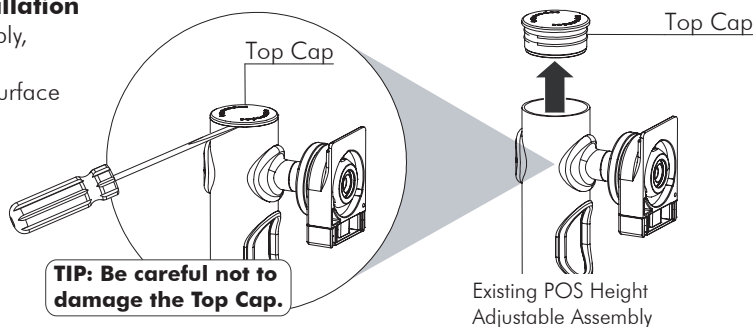
- Install a POS Height Adjustable product to the work surface (refer to the SD-POS-HA Installation Instructions).
- Remove the Top Cap (use a small screw driver).

OR

B. Back to Back Conversion

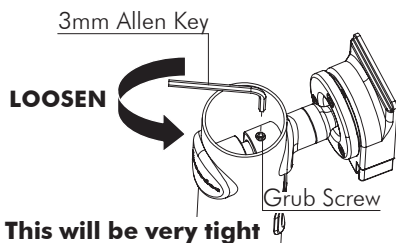
Prior to converting an **existing** POS Multi Assembly, you will need to:

- Remove the existing Display (TV/Monitor).
- Remove the Top Cap (use a small flat screw driver).



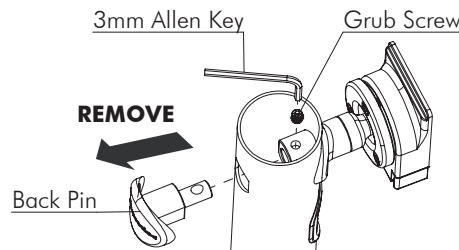
Step 3. Undo and Remove Back Pin

Using the 3mm Allen Key, undo the Grub Screw.



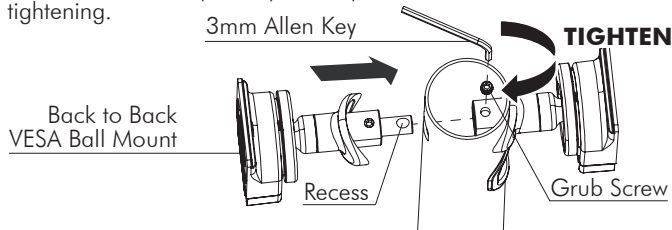
NOTE: This will be very tight

Remove the Back Pin but keep the Grub Screw for use later on.

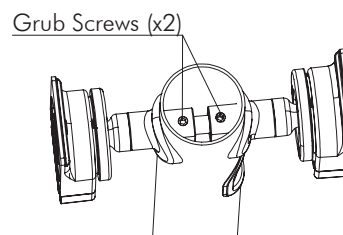


Step 4. Install Back to Back VESA Ball Mount

Use the Grub Screw to Install the Back to Back VESA Ball Mount. Ensure the Recess (shown) lines up with the Grub Screw before tightening.

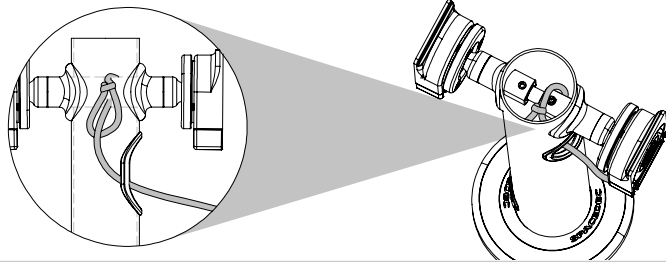


Ensure both Grub Screws are tightened as firmly as possible.



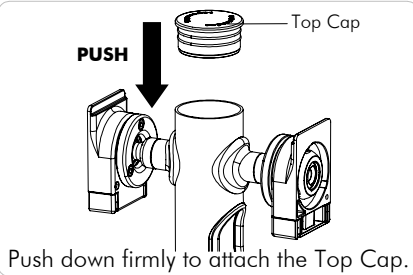
Step 5. (Optional) Install Monitor Security Cable

- Loop the Security Cable (Kensington or similar) around the internal post of the POS Assembly.
- Feed the other end of the cable through the POS Assembly and out the Cable Management Hole.
- After you have attached the monitor (As directed in Step 8) install the lock to the monitor as per the manufacturer guidelines.



Note: Security Cable Not Included

Step 6. Install Top Cap

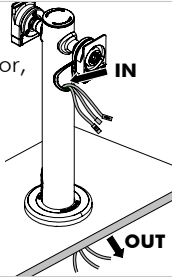


Step 7. Install Monitor Cables

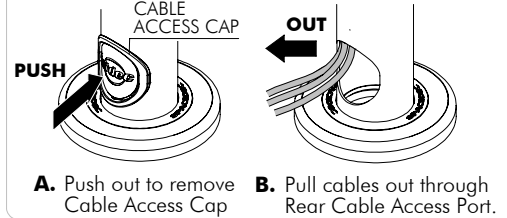
Option 1:

Prior to attaching your monitor, install the monitor cables.

Run them through the Front Cable Access Port, down the pole and out of the Cable Access Hole in the work surface.



Option 2: When you do not want to route the cables below the work surface.

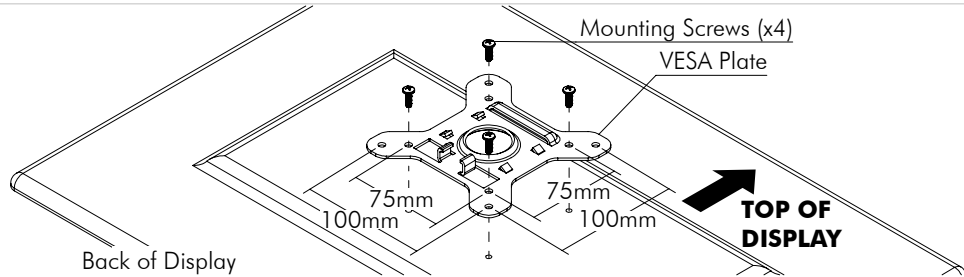


Step 8. Attach the VESA Plate to your Display

There are two mounting hole configurations:

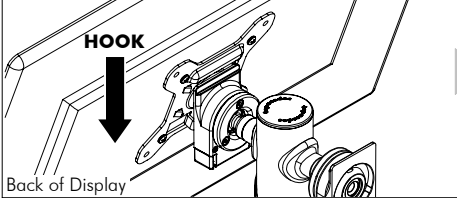
- 75 x 75mm
- 100 x 100mm

Choose appropriate Mounting Screws from the Hardware supplied to suit your Display.

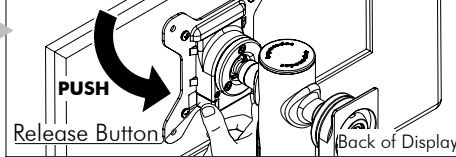


Step 9. Attach your Display to the POS Assembly

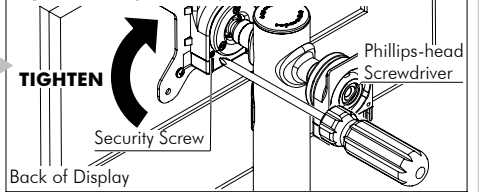
Hook the top of the VESA plate onto the Quickshift Mount.



Press and hold the Release Buttons. Gently push bottom of VESA Plate into Quickshift Mount. Release Buttons to lock in place.



(optional) Insert the Security Screw, and tighten using a Phillips-head Screwdriver



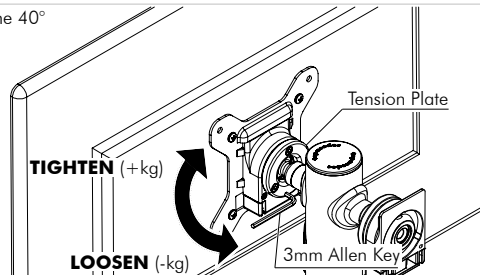
Step 10. Adjust the VESA Ball Mount

Position your Display to the desired viewing angle using the 40° angular movement allowed by the VESA Ball Mount.

If the display does not hold its position, or is too resistant, adjust the Tension Plate located at the rear of the VESA Ball Mount.

To make any adjustments, use the 3mm Allen Key supplied. Apply half a turn at a time to each screw on the Tension Plate to adjust evenly.

Check the display, and the adjust again if necessary.



Advanced Security Installation

These Installation Instructions secure the POS Multi using the provided fasteners from the above work surface.

For advanced Security Installation from below the work surface. Please refer to the *Advanced Security Installation Addendum*.

Installation Complete

