



Office Laminators

Jupiter (125)



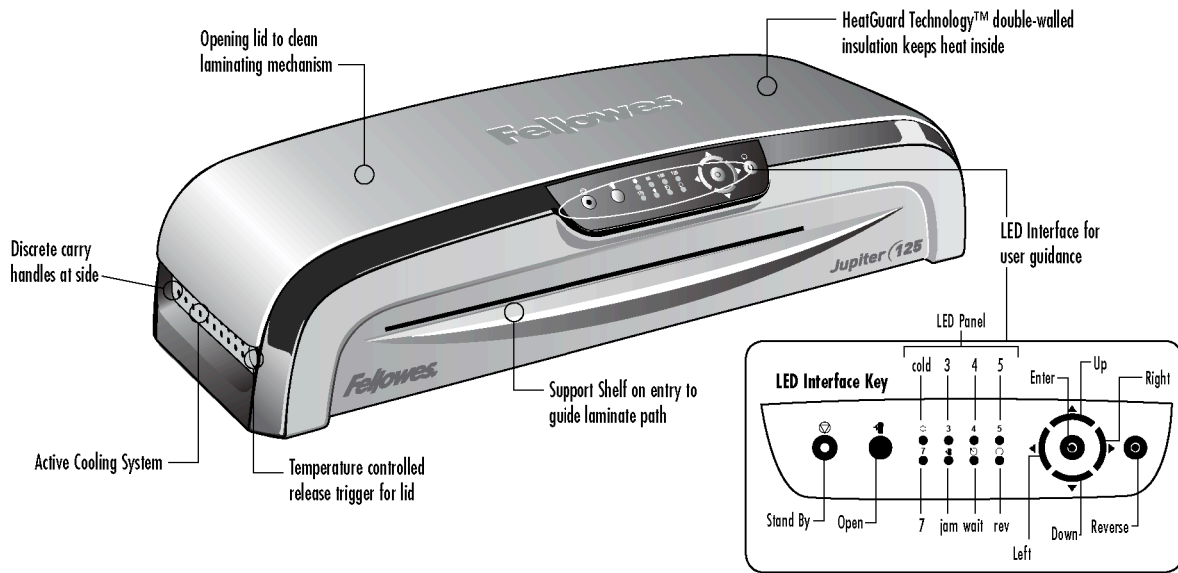
Please read these instructions before use.

Lire ces instructions avant utilisation.

Lea estas instrucciones antes del uso.

fellowes.com

ENGLISH



CAPABILITIES

Pouch Thickness	3-7 mil
Estimated Heat-Up Time	4 Minutes
Approximate Cool-Down Time	60 Minutes
Lamination Speed	18"/Minute
Maximum Width	12.5" mm
Voltage	120V
Frequency	60 Hz

Laminating capacity – 3-7 mil hot laminating pouches
Up to 12.5"
1000 Watt
Dimensions: 21 7/8" x 9 5/8" x 4 3/4"
Max document thickness 1/32"

IMPORTANT SAFETY INSTRUCTIONS — Please Read Before Using!

WARNING

- The socket-outlet must be installed near the equipment and be easily accessible.
- To prevent electrical shock, do NOT use laminator close to water and do NOT spill water on laminator, electric cord, or wall socket. ⚡
- Do not leave electric cord in contact with a warm surface.
- Do not leave electric cord hanging from a cupboard or shelf.
- Do not use laminator if electric cord is damaged.
- Do not laminate metal objects.

CAUTION

- Only use pouches specifically designed for the lamination setting you intend to use.
- Always supervise children during laminator operation.
- Keep pets away from laminator while in use.
- Switch off and unplug laminator when not in use.
- Only open the laminator as explained under "Maintenance". Do not open or attempt to repair in any other way, as this could result in electric shock and will void your warranty. Contact Customer Service if you have questions. Please note the warranty does not apply in cases of abuse, mishandling or unauthorized repair.
- Please be careful of sharp edges and corners and residual heat when opening the laminator.

IMPORTANT SAFETY INFORMATION

This laminator is equipped with an Auto shut-off function. It will turn the laminator into stand-by mode, if it has not been used for over 60 minutes. To switch the laminator back on, simply press the stand-by button at the left of the front operating panel.

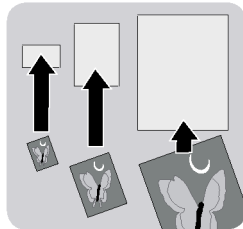
During lamination, the direction of the pouch can be reversed, if you are unsure about the progress of the lamination. To do so, press down the reverse key. This will eject the pouch back at the front entry.

TIPS

- Always put item in a pouch. Never laminate an empty pouch.
- Trim excess pouch material from around your item after laminating and cooling.
- Clean laminator rollers with Fellowes roller wipes (item #5703702) after 15-20 laminations to guarantee optimum laminating results. For further details, please see “maintenance” section.
- Before laminating valuable items, do a test run with an item similar in size and thickness.
- Do not laminate heat-sensitive documents (i.e., tickets, ultrasounds, etc.).
- Use a dry-erase marker for writing on laminated pouches.

BEFORE YOU LAMINATE

Use Fellowes® brand pouches for best results. Select correct pouch size for laminated item.

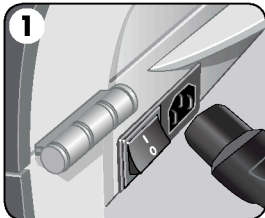


Position laminator so you have enough space to allow items to pass freely through the machine.

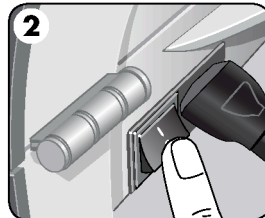


COLD LAMINATION STEPS

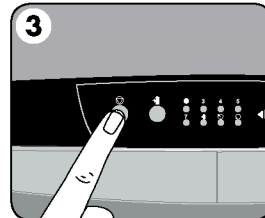
CAUTION: Only use self-adhesive pouches when laminating with a cold setting.



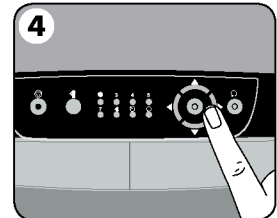
1. Please connect the laminator to the socket using the separate power cable supplied.



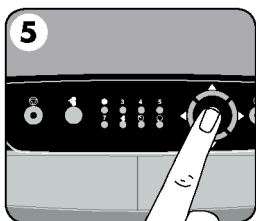
2. Switch laminator on with Power On / Off button at back of machine.



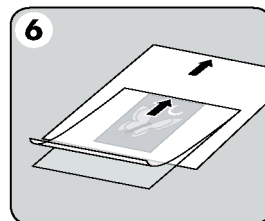
3. Press Stand-by button at left of front operating panel to switch laminator on.



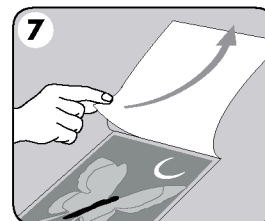
4. Use navigation keys to select setting for cold lamination.



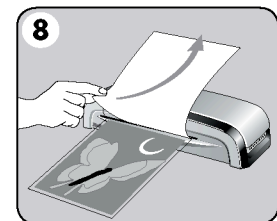
5. Confirm your selection by pressing “Enter” button in the middle of navigation keys. “Wait” LED (⊙) will stop flashing and beep will sound when laminator has finished temperature adjustment.



6. Center item on clear side against sealed edge; documents cannot be repositioned once laminated.



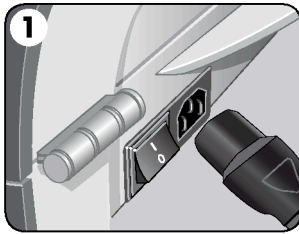
7. Peel a small part of the protective sheet away from document.



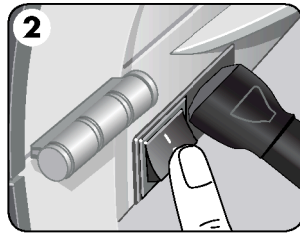
8. When the “wait” LED (⊙) stops flashing, place pouch, sealed edge first, into laminator entry. Keep pouch straight and use the edge guide to center it. Continue peeling the protective sheet away.

ENGLISH

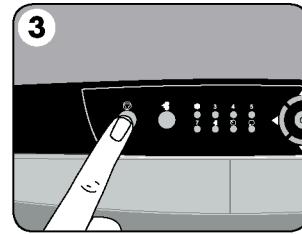
HOT LAMINATION STEPS



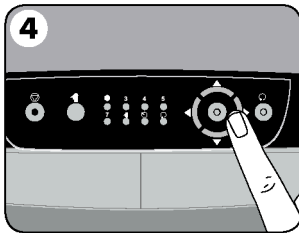
1. Please connect the laminator to the socket using the separate power cable supplied.



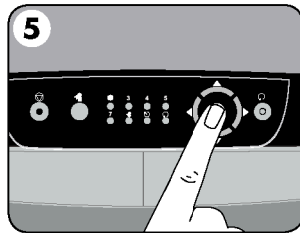
2. Switch laminator on with Power On / Off button at back of machine.



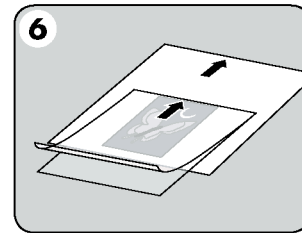
3. Press Stand-by button at left of front operating panel to switch laminator on.



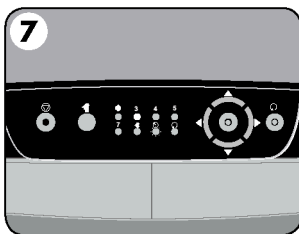
4. Use navigation keys to select setting for the hot lamination pouch thickness (3-7 mil) you wish to laminate.



5. Confirm your selection by pressing "Enter" button in the middle of navigation keys. "Wait" LED (⊖) will begin flashing and laminator will take a few minutes to reach required temperature.



6. While laminator is warming up, please prepare item you wish to laminate. Place the item inside the pouch and center it against the sealed edge of the pouch. To prevent jamming, use a carrier sheet when item is smaller than the pouch.



7. "Wait" LED (⊖) will stop flashing and acoustic bleep signal will sound when machine is ready to laminate selected pouch thickness.



8. Place pouch, sealed edge first, into laminator entry. Keep pouch straight and use the edge guide to center it.



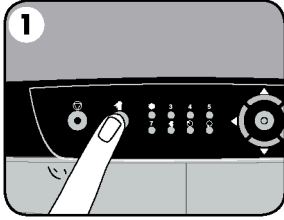
9. To prevent jamming, immediately remove laminated item from back of machine. Let item cool on flat surface for several seconds.



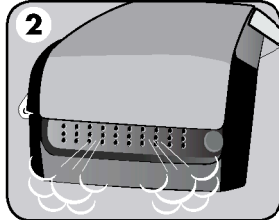
10. Before switching off laminator, feed empty cleaning sheet through machine to clean unit.

MAINTENANCE - Unique Easi-Access technology

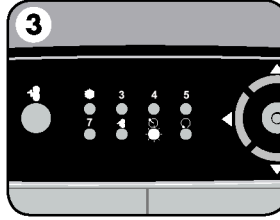
This laminator is equipped with the unique Easi-Access technology for easy maintenance. This allows the user to open the laminator for maintenance, just like a photocopier.



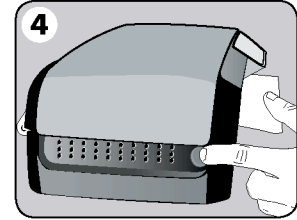
1. To open the laminator, please press the "Open" (🔌) button as shown in the illustration. The red Open light will illuminate.



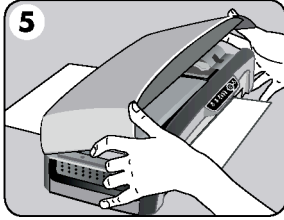
2. If machine is hot, fan will turn on to cool the machine down to safe handling temperature inside. During this time the "Wait" symbol will flash and cover will remain locked.



3. The "Wait" LED will turn off and the ready beep will sound when machine is ready to be opened.



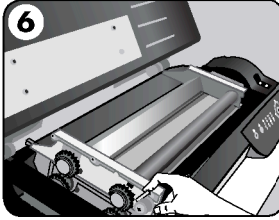
4. Press the silver buttons on both sides of the machine to activate the Easi-Access (The laminator needs to be switched on to allow the active temperature control to work).



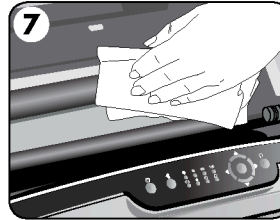
5. Open the lid with both hands.

You are now able to clean the inside of the laminator and carefully remove any residual glue or other items.

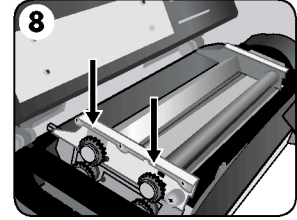
When laminator is opened, power to internal parts is isolated, so that user is not in danger of electric shock.



6. For further maintenance, the rollers can be released by experienced users. Press cam levers to release the rollers.

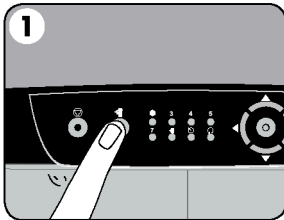


7. To clean residue off laminator rollers, please only use Fellowes Laminating Roller wipes (item No 5703702) as explained in their product instructions.



8. Please remember to re-secure the rollers before closing cover to ensure safe operation.

TROUBLESHOOTING

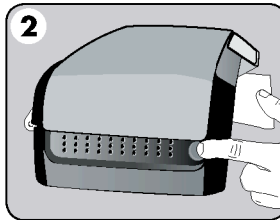


Problem

Ready Light does not go on after extended time

Pouch did not completely adhere to item

Jamming



Cause

Laminator is in a hot, humid area.

Laminated item may be too thick.

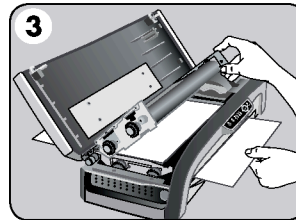
No item in pouch

Manually cut out pouch used

Pouch was not used.

Pouch was not centred or straight when fed through Pouch/Document Entry.

Glue and residue left on laminating rollers.



Solution

Move laminator to a cool dry area.

Pass through laminator a second time.

All our laminators have been designed to operate jam-free. In the unlikely event of a jam occurring, please press the "open" (🔌) button and wait for the wait (⌛) light to stop flashing.

The laminator can be opened to remove incorrectly inserted items as described under maintenance. Please ensure that you follow the described steps.

Gently pull on the jammed material to release it.

Always put item in a pouch.

Align sealed edge with Pouch/Document Entry. Use guide on machine to centre.

Clean residues off rollers using Fellowes Laminating Roller wipes, see "maintenance" section.

Make sure that not residue is left on the rollers and use cleaning sheet before laminating.

Need Help?

Please call our experts at Customer Service. You'll find the numbers for your nearest Service Centre on the back cover of this booklet.

LIMITED WARRANTY

Fellowes warrants all parts of the laminator to be free of defects in material and workmanship for 2 years from the date of purchase by the original consumer. If any part is found to be defective during the warranty period, your sole and exclusive remedy will be repair or replacement, at Fellowes' option and expense, of the defective part. This warranty does not apply in cases of abuse, mishandling or unauthorized repair. ANY IMPLIED WARRANTY, INCLUDING THAT OF MERCHANTABILITY OR FITNESS FOR A PARTICULAR PURPOSE, IS HEREBY LIMITED IN DURATION

TO THE APPROPRIATE WARRANTY PERIOD SET FORTH ABOVE. IN NO EVENT SHALL FELLOWES BE LIABLE FOR ANY CONSEQUENTIAL OR INCIDENTAL DAMAGES ATTRIBUTABLE TO THIS PRODUCT. This warranty gives you specific legal rights. You may have other legal rights that vary from this warranty. The duration, terms and conditions of this warranty are valid world-wide, except where different limitations, restrictions or conditions may be required by local law. For more details or to obtain services under this warranty, please contact us or your dealer.



Useful Phone Numbers

Help Line

Australia	+ 1-800-33-11-77
Canada	+ 1-800-665-4339
Europe	00-800-1810-1810

México	+ 1-800-234-1185
United States	+ 1-800-955-0959

Fellowes

Australia	+ 61-3-8336-9700
Benelux	+ 31-(0)-76-523-2090
Canada	+ 1-905-475-6320
Deutschland	+ 49-(0)-5131-49770
España	+ 34-91-748-05-01
France	+ 33-(0)-1-30-06-86-80
Italia	+ 39-071-730041

Japan	+ 81-(0)-3-5496-2401
Korea	+ 82-2-3462-2884
Malaysia	+ 60-(0)-35122-1231
Polska	+ 48-(0)-22-771-47-40
Singapore	+ 65-6221-3811
United Kingdom	+ 44-(0)-1302-836836
United States	+ 1-630-893-1600



1789 Norwood Avenue, Itasca, Illinois 60143-1095 • USA • 630-893-1600

fellowes.com

Australia	Canada	Deutschland	France	Japan	Polska	United Kingdom
Benelux	China	España	Italia	Korea	Singapore	United States