

# Dell Vostro 3750 Owner's Manual

Regulatory Model P13E  
Regulatory Type P13E001



# Notes, Cautions, and Warnings



**NOTE:** A NOTE indicates important information that helps you make better use of your computer.



**CAUTION:** A CAUTION indicates potential damage to hardware or loss of data if instructions are not followed.



**WARNING:** A WARNING indicates a potential for property damage, personal injury, or death.

Information in this publication is subject to change without notice.

© 2011 Dell Inc. All rights reserved.

Reproduction of these materials in any manner whatsoever without the written permission of Dell Inc. is strictly forbidden.

Trademarks used in this text: Dell™, the DELL logo, Dell Precision™, Precision ON™, ExpressCharge™, Latitude™, Latitude ON™, OptiPlex™, Vostro™, and Wi-Fi Catcher™ are trademarks of Dell Inc. Intel®, Pentium®, Xeon®, Core™, Atom™, Centrino®, and Celeron® are registered trademarks or trademarks of Intel Corporation in the U.S. and other countries. AMD® is a registered trademark and AMD Opteron™, AMD Phenom™, AMD Sempron™, AMD Athlon™, ATI Radeon™, and ATI FirePro™ are trademarks of Advanced Micro Devices, Inc. Microsoft®, Windows®, MS-DOS®, Windows Vista®, the Windows Vista start button, and Office Outlook® are either trademarks or registered trademarks of Microsoft Corporation in the United States and/or other countries. Blu-ray Disc™ is a trademark owned by the Blu-ray Disc Association (BDA) and licensed for use on discs and players. The Bluetooth® word mark is a registered trademark and owned by the Bluetooth® SIG, Inc. and any use of such mark by Dell Inc. is under license. Wi-Fi® is a registered trademark of Wireless Ethernet Compatibility Alliance, Inc.

Other trademarks and trade names may be used in this publication to refer to either the entities claiming the marks and names or their products, Dell Inc. disclaims any proprietary interest in trademarks and trade names other than its own.

2011 – 06

Rev. A00

# Contents

<b>Notes, Cautions, and Warnings</b> .....	<b>2</b>
<b>1 Working on Your Computer</b> .....	<b>9</b>
Before Working Inside Your Computer.....	9
Recommended Tools.....	11
Turning Off Your Computer.....	11
After Working Inside Your Computer.....	11
<b>2 Battery</b> .....	<b>13</b>
Removing The Battery.....	13
Installing The Battery.....	14
<b>3 Secure Digital (SD) Card</b> .....	<b>15</b>
Removing The Secure Digital (SD) Card.....	15
Installing The Secure Digital (SD) Card.....	16
<b>4 ExpressCard</b> .....	<b>17</b>
Removing The ExpressCard.....	17
Installing The ExpressCard.....	18
<b>5 Keyboard</b> .....	<b>19</b>
Removing The Keyboard.....	19
Installing The Keyboard.....	26
<b>6 Memory Door</b> .....	<b>27</b>
Removing The Memory Door.....	27
Installing The Memory Door.....	28
<b>7 Memory</b> .....	<b>29</b>
Removing The Memory Module.....	29

Installing The Memory Module.....	30
<b>8 Hard Drive.....</b>	<b>31</b>
Removing The Hard Drive.....	31
Installing The Hard Drive.....	33
<b>9 Optical Drive.....</b>	<b>35</b>
Removing The Optical Drive.....	35
Installing The Optical Drive.....	37
<b>10 Palm Rest.....</b>	<b>39</b>
Removing The Palmrest.....	39
Installing The Palmrest.....	44
<b>11 Hinge Cover.....</b>	<b>47</b>
Removing The Hinge Cover.....	47
Installing The Hinge Cover.....	48
<b>12 Wireless Local Area Network (WLAN) Card.....</b>	<b>51</b>
Removing the Wireless Local Area Network (WLAN) Card.....	51
Installing The Wireless Local Area Network (WLAN) Card.....	53
<b>13 Display Assembly.....</b>	<b>55</b>
Removing The Display Assembly.....	55
Installing The Display Assembly.....	58
<b>14 Display Bezel.....</b>	<b>59</b>
Removing The Display Bezel.....	59
Installing The Display Bezel.....	60
<b>15 Display Panel.....</b>	<b>63</b>
Removing The Display Panel.....	63
Installing The Display Panel.....	66

<b>16 Display Cable.....</b>	<b>69</b>
Removing The Display Cable.....	69
Installing The Display Cable.....	70
<b>17 Display Brackets and Hinges.....</b>	<b>71</b>
Removing The Display Brackets And Hinges.....	71
Installing The Display Brackets And Hinges.....	73
<b>18 Camera.....</b>	<b>75</b>
Removing The Camera Module.....	75
Installing The Camera Module.....	77
<b>19 Camera Cable.....</b>	<b>79</b>
Removing The Camera Cable.....	79
Installing The Camera Cable.....	80
<b>20 System Fan.....</b>	<b>83</b>
Removing The System Fan.....	83
Installing The System Fan.....	84
<b>21 ExpressCard Cable.....</b>	<b>87</b>
Removing The ExpressCard Cable.....	87
Installing The ExpressCard Cable.....	88
<b>22 ExpressCard Board.....</b>	<b>89</b>
Removing The ExpressCard Board.....	89
Installing The ExpressCard Board.....	90
<b>23 LED Board.....</b>	<b>91</b>
Removing The LED Board.....	91
Installing The LED Board.....	92
<b>24 System Board.....</b>	<b>93</b>
Removing The System Board.....	93

Installing The System Board.....	96
<b>25 Heat Sink.....</b>	<b>99</b>
Removing The Heatsink.....	99
Installing The Heatsink.....	100
<b>26 PCH Heatsink.....</b>	<b>103</b>
Removing The PCH Heatsink.....	103
Installing The PCH Heatsink.....	104
<b>27 Processor.....</b>	<b>107</b>
Removing The Processor.....	107
Installing The Processor.....	108
<b>28 Coin-Cell Battery.....</b>	<b>111</b>
Removing The Coin-Cell Battery.....	111
Installing The Coin-Cell Battery.....	112
<b>29 DC-In Port.....</b>	<b>115</b>
Removing The DC-in Port.....	115
Installing The DC-in Port.....	116
<b>30 Input/Output Board.....</b>	<b>119</b>
Removing The Input/Output (I/O) Panel.....	119
Installing The Input/Output (I/O) Panel.....	120
<b>31 Sub-Woofer.....</b>	<b>123</b>
Removing The SubWoofer.....	123
Installing The SubWoofer.....	124
<b>32 Speaker.....</b>	<b>125</b>
Removing The Speakers.....	125
Installing The Speakers.....	127

<b>33 System Setup.....</b>	<b>129</b>
System Setup Overview.....	129
System Setup Enter.....	129
System Setup Screens.....	130
System Setup Options.....	131
<b>34 Diagnostics.....</b>	<b>135</b>
Device Status Lights.....	135
Battery Status Lights.....	135
Diagnostic Beep Codes.....	135
<b>35 Specifications.....</b>	<b>137</b>
<b>36 Contacting Dell.....</b>	<b>147</b>
Contacting Dell.....	147







# Working on Your Computer


## Before Working Inside Your Computer


Use the following safety guidelines to help protect your computer from potential damage and to help to ensure your personal safety. Unless otherwise noted, each procedure included in this document assumes that the following conditions exist:


- You have performed the steps in Working on Your Computer.
- You have read the safety information that shipped with your computer.
- A component can be replaced or--if purchased separately--installed by performing the removal procedure in reverse order.


 **WARNING:** Before working inside your computer, read the safety information that shipped with your computer. For additional safety best practices information, see the Regulatory Compliance Homepage at [www.dell.com/regulatory\\_compliance](http://www.dell.com/regulatory_compliance).

 **CAUTION:** Many repairs may only be done by a certified service technician. You should only perform troubleshooting and simple repairs as authorized in your product documentation, or as directed by the online or telephone service and support team. Damage due to servicing that is not authorized by Dell is not covered by your warranty. Read and follow the safety instructions that came with the product.

 **CAUTION:** To avoid electrostatic discharge, ground yourself by using a wrist grounding strap or by periodically touching an unpainted metal surface, such as a connector on the back of the computer.


 **CAUTION:** Handle components and cards with care. Do not touch the components or contacts on a card. Hold a card by its edges or by its metal mounting bracket. Hold a component such as a processor by its edges, not by its pins.

 **CAUTION:** When you disconnect a cable, pull on its connector or on its pull-tab, not on the cable itself. Some cables have connectors with locking tabs; if you are disconnecting this type of cable, press in on the locking tabs before you disconnect the cable. As you pull connectors apart, keep them evenly aligned to avoid bending any connector pins. Also, before you connect a cable, ensure that both connectors are correctly oriented and aligned.


 **NOTE:** The color of your computer and certain components may appear differently than shown in this document.

To avoid damaging your computer, perform the following steps before you begin working inside the computer.

1. Ensure that your work surface is flat and clean to prevent the computer cover from being scratched.
2. Turn off your computer (see *Turning Off Your Computer*).
3. If the computer is connected to a docking device (docked) such as the optional Media Base or Battery Slice, undock it.


 **CAUTION:** To disconnect a network cable, first unplug the cable from your computer and then unplug the cable from the network device.

4. Disconnect all network cables from the computer.
5. Disconnect your computer and all attached devices from their electrical outlets.
6. Close the display and turn the computer upside-down on a flat work surface.

 **NOTE:** To avoid damaging the system board, you must remove the main battery before you service the computer.

7. Remove the main battery.
8. Turn the computer top-side up.
9. Open the display.
10. Press the power button to ground the system board.

 **CAUTION:** To guard against electrical shock, always unplug your computer from the electrical outlet before opening the display.

 **CAUTION:** Before touching anything inside your computer, ground yourself by touching an unpainted metal surface, such as the metal at the back of the computer. While you work, periodically touch an unpainted metal surface to dissipate static electricity, which could harm internal components.

11. Remove any installed ExpressCards or Smart Cards from the appropriate slots.

## Recommended Tools

The procedures in this document may require the following tools:


- Small flat-blade screwdriver
- #0 Phillips screwdriver
- #1 Phillips screwdriver
- Small plastic scribe
- Flash BIOS update program CD

## Turning Off Your Computer

 **CAUTION: To avoid losing data, save and close all open files and exit all open programs before you turn off your computer.**

1. Shut down the operating system:

- In Windows Vista :

Click **Start** , then click the arrow in the lower-right corner of the **Start** menu as shown below, and then click **Shut Down**.



- In Windows XP:

Click **Start** → **Turn Off Computer** → **Turn Off** . The computer turns off after the operating system shutdown process is complete.

2. Ensure that the computer and all attached devices are turned off. If your computer and attached devices did not automatically turn off when you shut down your operating system, press and hold the power button for about 4 seconds to turn them off.

## After Working Inside Your Computer

After you complete any replacement procedure, ensure you connect any external devices, cards, and cables before turning on your computer.

 **CAUTION: To avoid damage to the computer, use only the battery designed for this particular Dell computer. Do not use batteries designed for other Dell computers.**

1. Connect any external devices, such as a port replicator, battery slice, or media base, and replace any cards, such as an ExpressCard.
2. Connect any telephone or network cables to your computer.

 **CAUTION: To connect a network cable, first plug the cable into the network device and then plug it into the computer.**

3. Replace the battery.
4. Connect your computer and all attached devices to their electrical outlets.
5. Turn on your computer.

# Battery

## Removing The Battery

1. Follow the procedures in *Before Working On Your Computer*.
2. Slide the release latches to unlock the battery.



3. Slide the battery out of the chassis and remove it from the computer.



## Installing The Battery

1. Slide the battery into its slot until it clicks into place.
2. Follow the procedures in *After Working Inside Your Computer*.

# Secure Digital (SD) Card

## Removing The Secure Digital (SD) Card

1. Follow the procedures in *Before Working On Your Computer*.
2. Remove the *battery*.
3. Press in on the SD card to release it from the computer.



4. Remove the SD card from the computer.



## Installing The Secure Digital (SD) Card

1. Push the SD card into the slot until it clicks into place.
2. Install the *battery*.
3. Follow the procedures in *After Working Inside Your Computer*.



# ExpressCard

## Removing The ExpressCard

1. Follow the procedures in *Before Working On Your Computer*.
2. Remove the *battery*.
3. Press the Express dummy card and the dummy card will pop out.



4. Take the Express dummy card out of the system.



## Installing The ExpressCard

1. Slide the ExpressCard into its slot until it clicks into place.
2. Install the *battery*.
3. Follow the procedures in *After Working Inside Your Computer*.

# Keyboard

## Removing The Keyboard

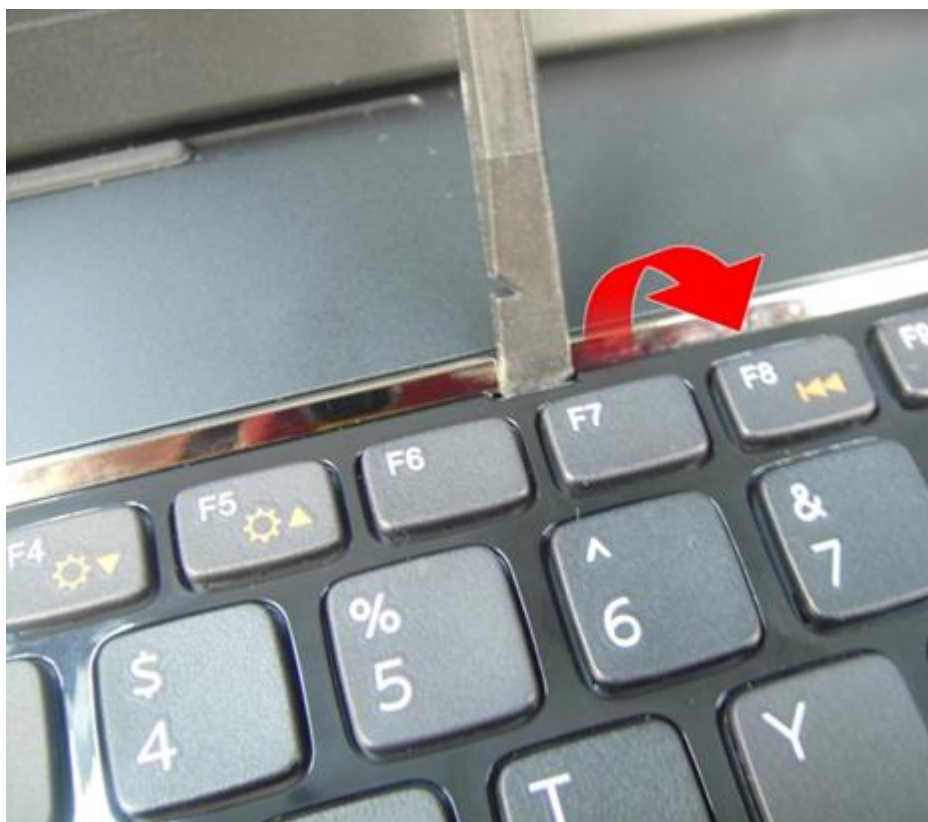
1. Follow the procedures in *Before Working On Your Computer*.
2. Remove the *battery*.
3. Press the keyboard down. Pry the keyboard with the use of a flat-head screwdriver towards the display to reveal the first keyboard retainer.



4. Pry up the second keyboard retainer.



5. Pry up the third keyboard retainer.



6. Pry up the fourth keyboard retainer.

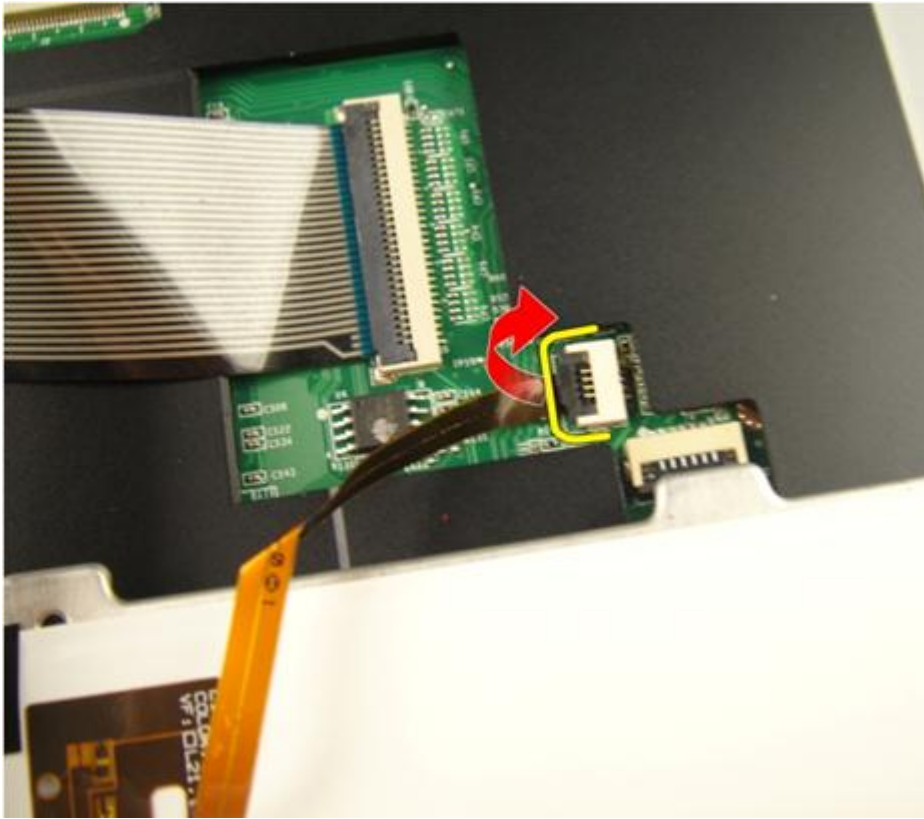


7. Pull up the keyboard from the palm rest.



8. Release the latch on the system board connector then disconnect the keyboard back-light cable.





9. Release the latch on the system board connector and then disconnect the keyboard cable.



## Installing The Keyboard

1. Connect the keyboard data cable to the back of the keyboard.
2. If your computer comes with a backlit keyboard, connect the keyboard backlight cable.
3. Replace the adhesive tape to secure the keyboard data cable to the back of the keyboard.
4. Install the keyboard.
5. Install the *battery*.
6. Follow the procedures in *After Working Inside Your Computer*.

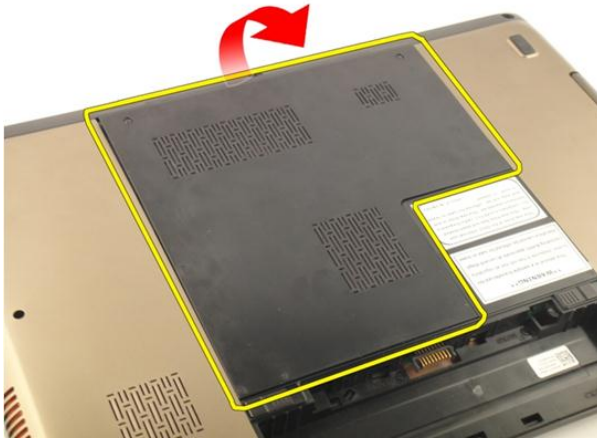
# Memory Door

## Removing The Memory Door

1. Follow the procedures in *Before Working On Your Computer*.
2. Remove the *battery*.
3. Loosen the screws that secure the memory door.



4. Pry up the memory door near the screw hole, lift, and remove it.



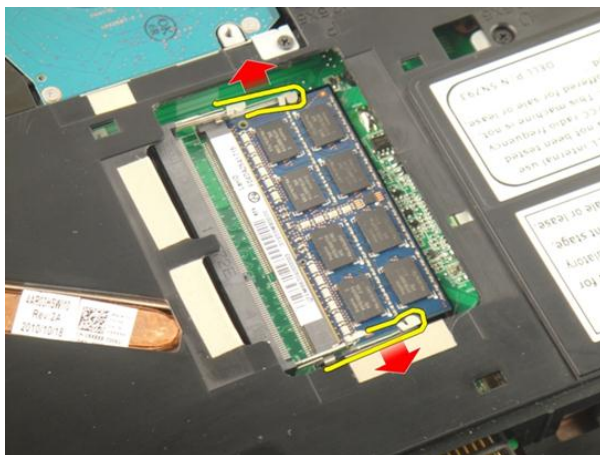
## Installing The Memory Door

1. Install the memory door on the back of the computer.
2. Install the screws securing the memory door.
3. Install the *battery*.
4. Follow the procedures in *After Working Inside Your Computer*.

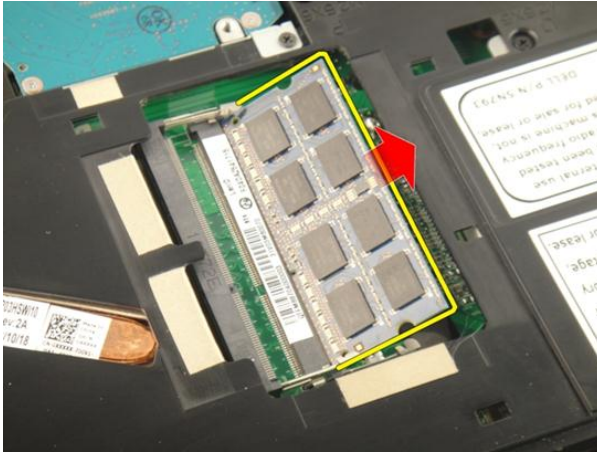
# Memory

## Removing The Memory Module

1. Follow the procedures in *Before Working On Your Computer*.
2. Remove the *battery*.
3. Remove the *memory door*.
4. Pry the retention clips away from the memory module until it pops up.



5. Remove the memory module from its connector on the system board.



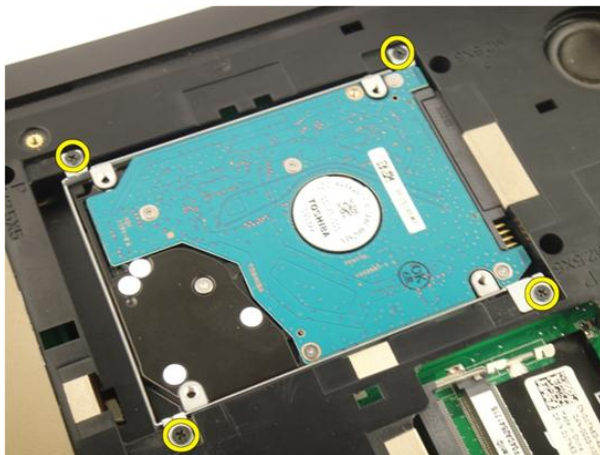
## Installing The Memory Module

1. Insert the memory module into the memory socket.
2. Press down on the memory module until the retention clips secure the memory module in place.
3. Install the *memory door*.
4. Install the *battery*.
5. Follow the procedures in *After Working Inside Your Computer*.

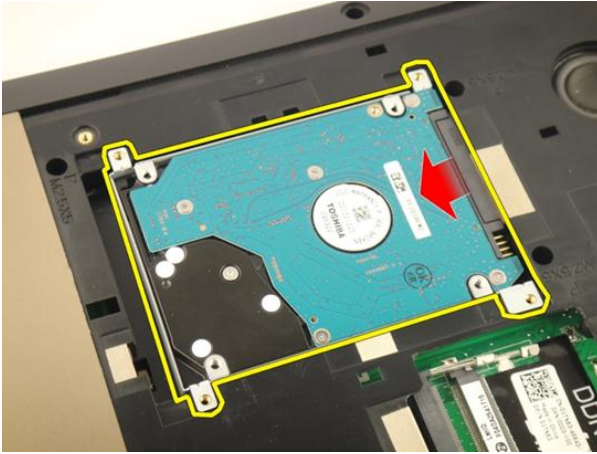
# Hard Drive

## Removing The Hard Drive

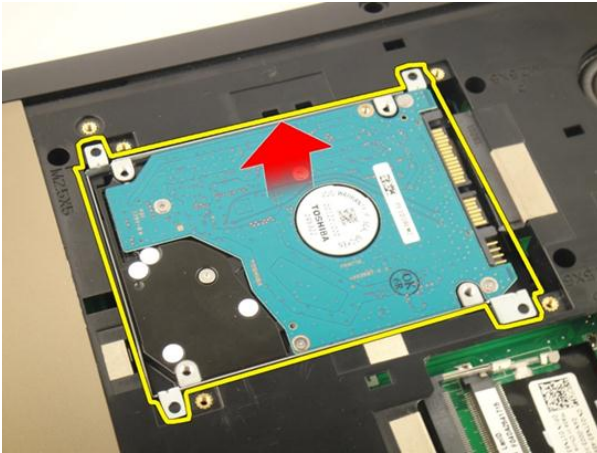
1. Follow the procedures in *Before Working On Your Computer*.
2. Remove the *battery*.
3. Remove the *memory door*.
4. Remove the screws that secure the hard-drive bracket.



5. Slide the hard drive module in the direction shown in the image below.

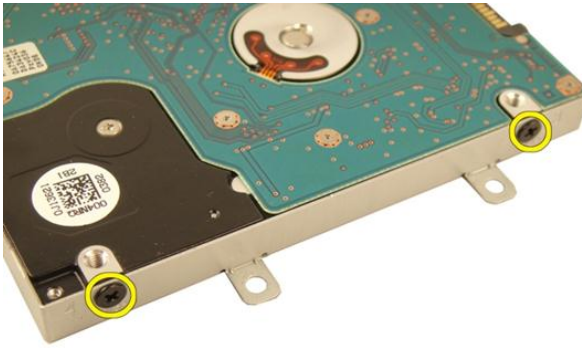


6. Remove the hard drive module from the system board.

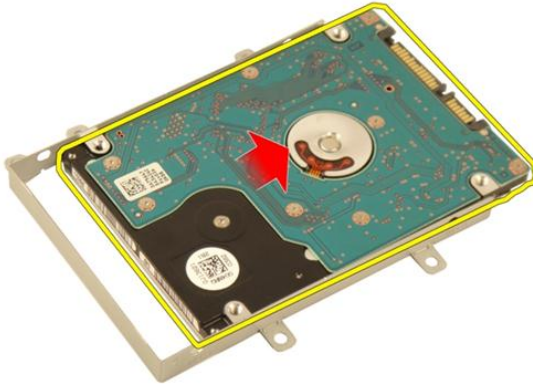


7. Remove the screws that secure the hard-drive bracket.





8. Slide the hard drive from the hard-drive bracket.



## Installing The Hard Drive

1. Tighten the screws to secure the hard-drive bracket assembly.
2. Install the *memory door*.
3. Install the *battery*.
4. Follow the procedures in *After Working Inside Your Computer*.



# Optical Drive

## Removing The Optical Drive

1. Follow the procedures in *Before Working On Your Computer*.
2. Remove the *battery*.
3. Remove the *memory door*.
4. Remove the screw that secures the optical-drive bracket.

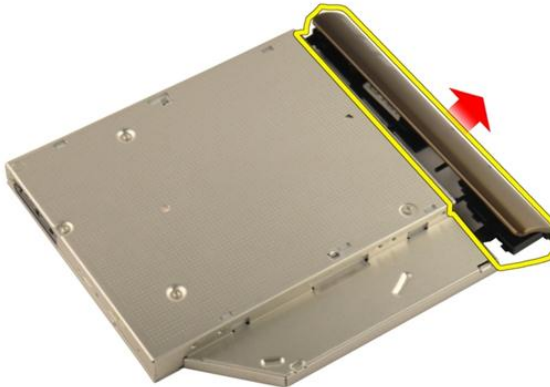


5. Pull out the optical drive module from the computer.





8. Slide the optical-drive bracket off the optical drive module.



## Installing The Optical Drive

1. Tighten the screws to secure the bracket to the back of the optical drive.
2. Slide the optical drive into the compartment on the right side of the chassis.
3. Tighten the screw to secure the optical drive to the computer.
4. Install the *memory door*.
5. Install the *battery*.
6. Follow the procedures in *After Working Inside Your Computer*.



# Palm Rest

## Removing The Palmrest

1. Follow the procedures in *Before Working On Your Computer*.
2. Remove the *battery*.
3. Remove the *keyboard*.
4. Remove the *memory door*.
5. Remove the *optical drive*.
6. Remove the rubbers from the bottom base.



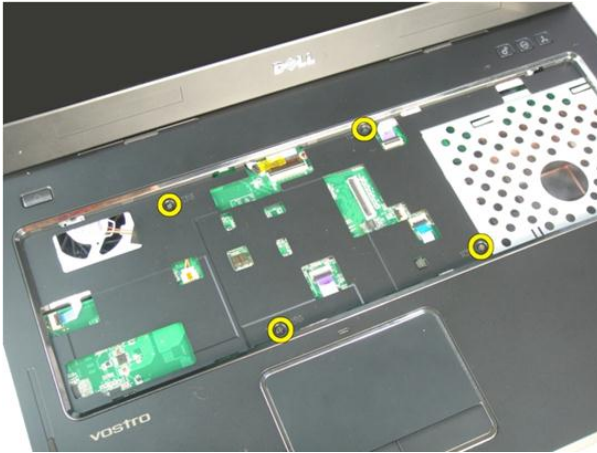


7. Remove the screws that secure the bottom base.

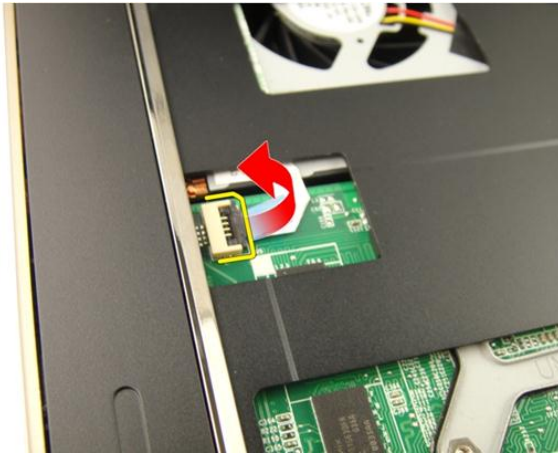


8. Flip the computer around and remove the screws that secure the palm rest.





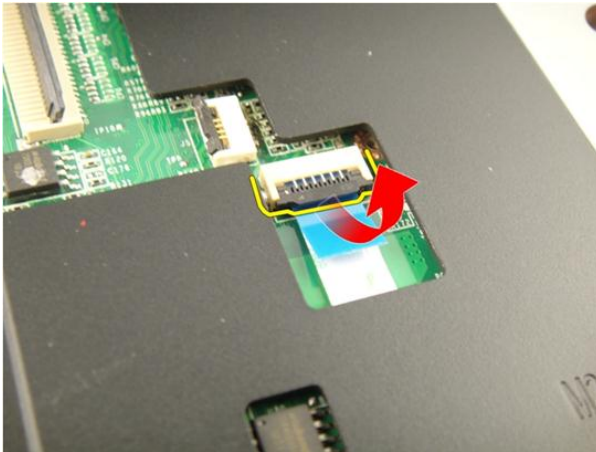
9. Release the latch on the system board connector and then disconnect the power-button cable.



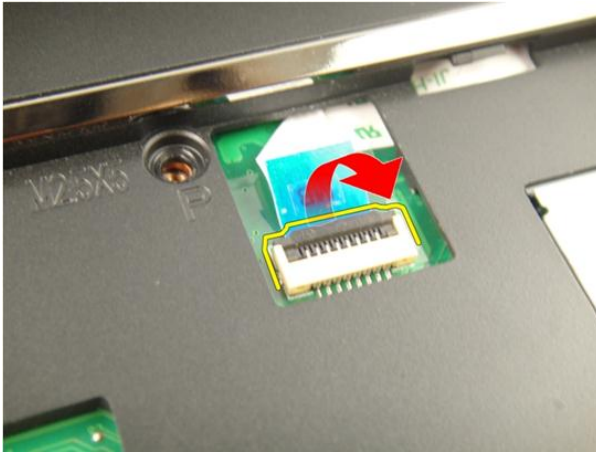
10. Release the latch on the system board connector and then disconnect the touch pad cable.



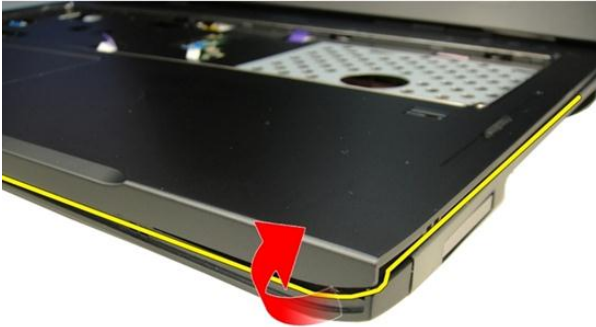
11. Release the latch on the system board connector and then disconnect the fingerprint-reader cable.



12. Release the latch on the system board connector and then disconnect the hot-key cable.



13. Pry up the right side of the palm rest.



14. Pry up the left side of the palm rest.



15. Pry up the sides of the palm rest and remove it.



## Installing The Palmrest

1. Connect all cables to the palm rest.
2. Tighten the captive screws to secure the palm rest in place.
3. Tighten the screws on the bottom of the system that secure the palm rest.
4. Install the *optical drive*.
5. Install the *memory door*.
6. Install the *keyboard*.

7. Install the *battery*.
8. Follow the procedures in *After Working Inside Your Computer*.



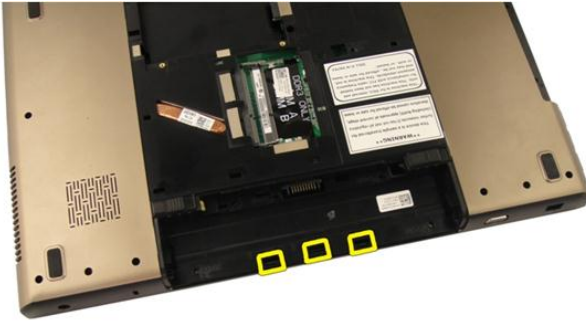
# Hinge Cover

## Removing The Hinge Cover

1. Follow the procedures in *Before Working On Your Computer*.
2. Remove the *battery*.
3. Remove the *keyboard*.
4. Remove the *optical drive*.
5. Remove the *memory door*.
6. Remove the *palm rest*.
7. Remove the screws that secure the hinge cover from the battery compartment.



8. Press and hold the three hooks to disengage.



9. Flip the computer around and remove the hinge cover.



## Installing The Hinge Cover

1. Tighten the screws to secure the display hinges in place.
2. Install the *palm rest*.
3. Install the *memory door*.
4. Install the *optical drive*.
5. Install the *keyboard*.
6. Install the *battery*.



7. Follow the procedures in *After Working Inside Your Computer*.



# Wireless Local Area Network (WLAN) Card

## Removing the Wireless Local Area Network (WLAN) Card

1. Follow the procedures in *Before Working On Your Computer*.
2. Remove the *battery*.
3. Remove the *keyboard*.
4. Remove the *memory door*.
5. Remove the *optical drive*.
6. Remove the *palm rest*.
7. Disconnect the antenna cable from the WLAN card.



8. Disconnect the antenna cable from the WLAN card.



9. Remove the screw that secures the WLAN card.



10. Pull the WLAN card straight out of its socket and remove it.



## Installing The Wireless Local Area Network (WLAN) Card

1. Slide the WLAN card into its slot.
2. Tighten the screw that secures the WLAN card in place.
3. Connect the antenna cables according to the color code on the WLAN card.
4. Install the *palm rest*.
5. Install the *optical drive*.
6. Install the *memory door*.
7. Install the *keyboard*.
8. Install the *battery*.
9. Follow the procedures in *After Working Inside Your Computer*.



# Display Assembly

## Removing The Display Assembly

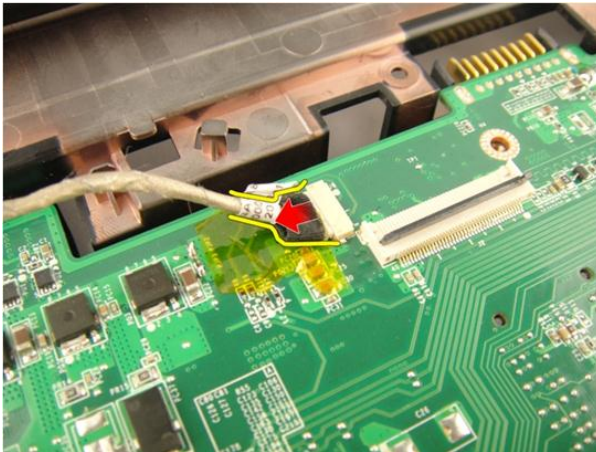
1. Follow the procedures in *Before Working On Your Computer*.
2. Remove the *battery*.
3. Remove the *keyboard*.
4. Remove the *memory door*.
5. Remove the *optical drive*.
6. Remove the *palm rest*.
7. Remove the *hinge cover*.
8. Remove the *WLAN card*.
9. Remove the screws that secure the display hinge.



10. Release the latch on the system board and then disconnect the display cable.

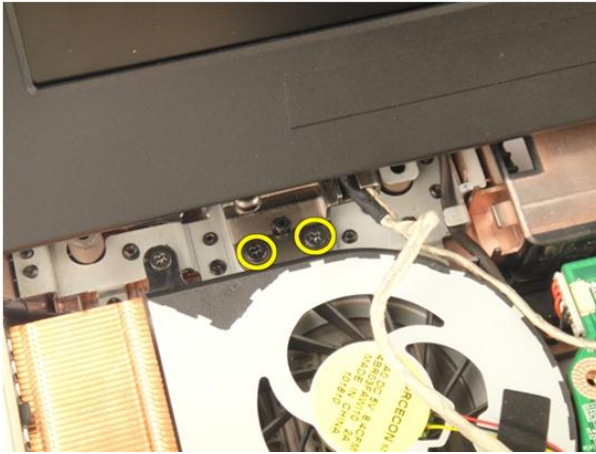


11. Disconnect the camera cable from the system board.



12. Remove the screws that secure the left hinge.

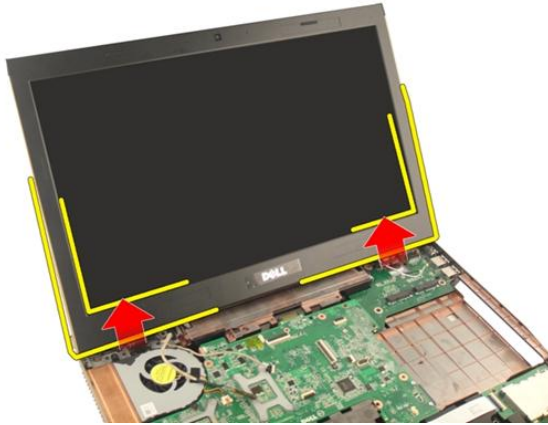




13. Remove the screws that secure the right hinge.



14. Lift up the display assembly and remove it from the computer.



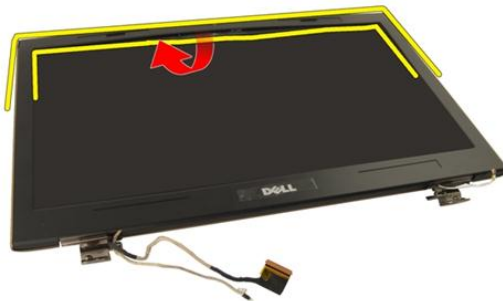
## Installing The Display Assembly

1. Attach the display assembly to the computer.
2. Tighten the screws on the display assembly to secure it in place.
3. Tighten the screws on the bottom of the system to secure the display assembly in place.
4. Install the *WLAN card*.
5. Install the *hinge cover*.
6. Install the *palm rest*.
7. Install the *optical drive*.
8. Install the *memory door*.
9. Install the *keyboard*.
10. Install the *battery*.
11. Follow the procedures in *After Working Inside Your Computer*.

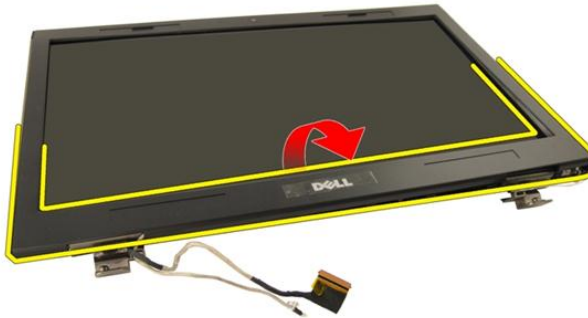
# Display Bezel

## Removing The Display Bezel

1. Follow the procedures in *Before Working On Your Computer*.
2. Remove the *battery*.
3. Remove the *keyboard*.
4. Remove the *memory door*.
5. Remove the *optical drive*.
6. Remove the *palm rest*.
7. Remove the *hinge cover*.
8. Remove the *WLAN card*.
9. Remove the *display assembly*.
10. Pry up the upper side of the bezel.



11. Pry up the sides of the bezel.



12. Remove the display bezel from display hinge .



## Installing The Display Bezel

1. Attach the display bezel to the display hinge.
2. Install the *display assembly*.
3. Install the *WLAN card*.
4. Install the *hinge cover*.
5. Install the *palm rest*.
6. Install the *optical drive*.

7. Install the *memory door*.
8. Install the *keyboard*.
9. Install the *battery*.
10. Follow the procedures in *After Working Inside Your Computer*.



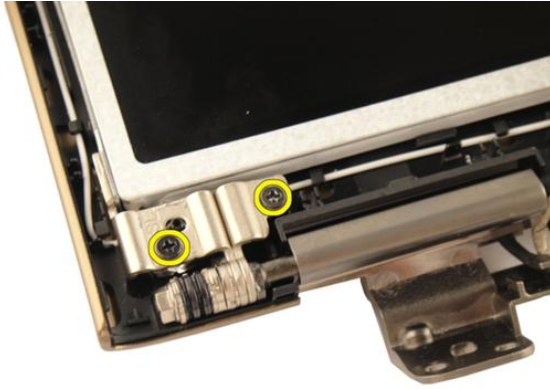
# Display Panel

## Removing The Display Panel

1. Follow the procedures in *Before Working On Your Computer*.
2. Remove the *battery*.
3. Remove the *keyboard*.
4. Remove the *memory door*.
5. Remove the *optical drive*.
6. Remove the *palm rest*.
7. Remove the *hinge cover*.
8. Remove the *WLAN card*.
9. Remove the *display assembly*.
10. Remove the *display bezel*.
11. Remove the screw that secures the left-display bracket.



12. Remove the screws that secure the left-display bracket.

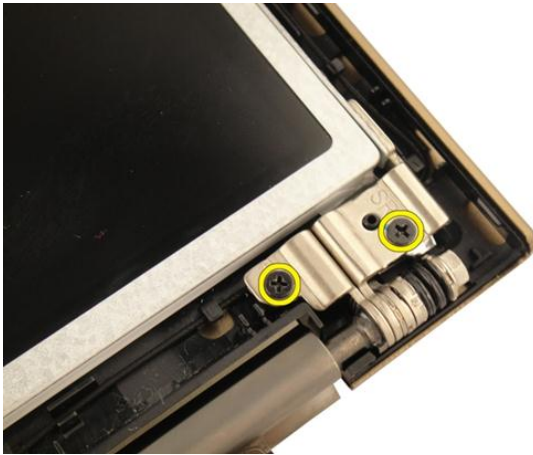


13. Remove the screw that secures the right-display bracket.

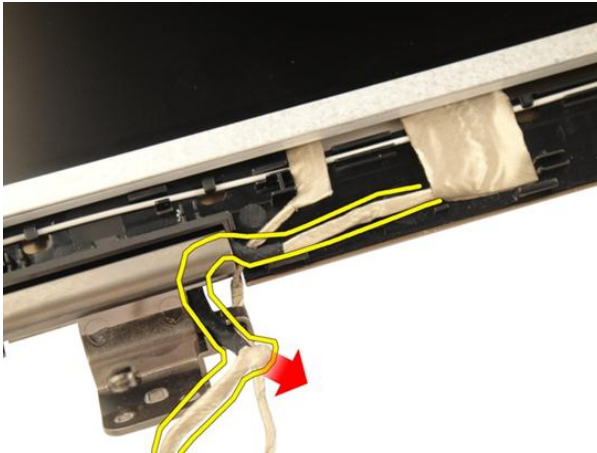


14. Remove the screws that secure the right-display bracket.

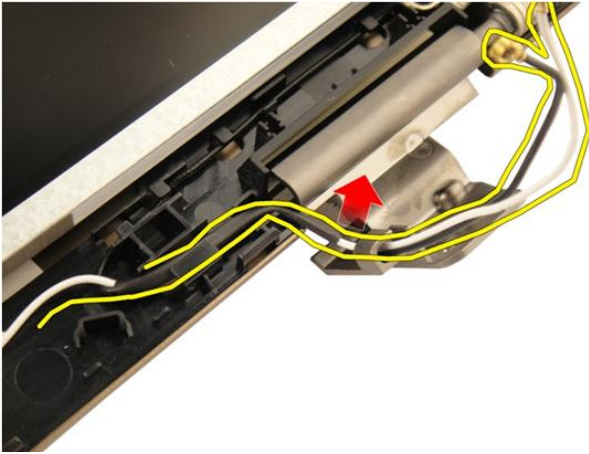




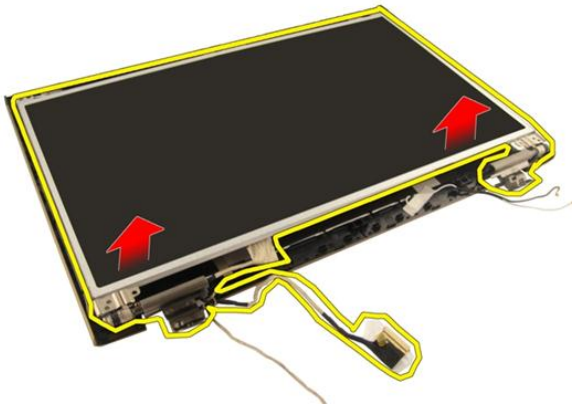
15. Release the display cable from the trough as shown in the image.



16. Release the WLAN antenna cable from the trough as shown in the image below.



17. Lift and remove the display panel module from the display cover.



## Installing The Display Panel

1. Connect the WLAN antenna cable through the trough.
2. Align the display bracket with the display panel and tighten the screws securing the display bracket in place.
3. Install the *display bezel*.
4. Install the *display assembly*.
5. Install the *WLAN card*.
6. Install the *hinge cover*.

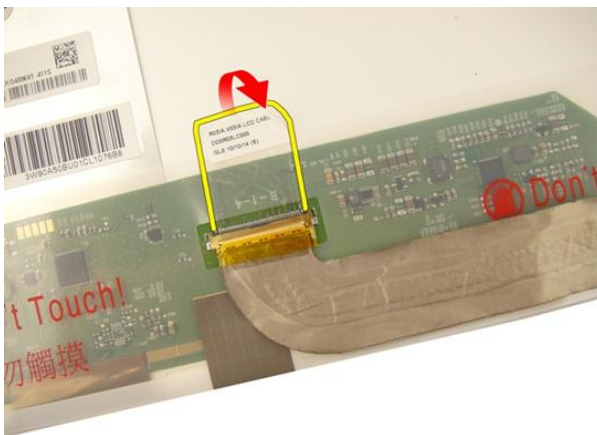
7. Install the *palm rest*.
8. Install the *optical drive*.
9. Install the *memory door*.
10. Install the *keyboard*.
11. Install the *battery*.
12. Follow the procedures in *After Working Inside Your Computer*.



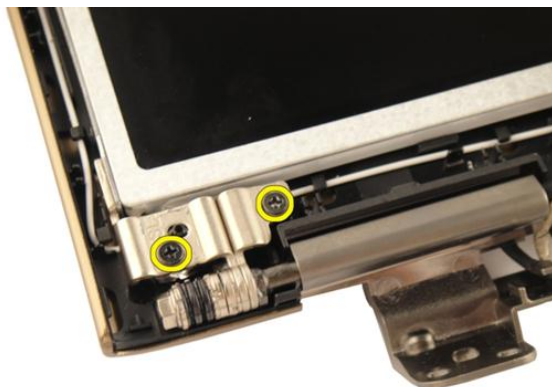
# Display Cable

## Removing The Display Cable

1. Follow the procedures in *Before Working On Your Computer*.
2. Remove the *battery*.
3. Remove the *keyboard*.
4. Remove the *memory door*.
5. Remove the *optical drive*.
6. Remove the *palm rest*.
7. Remove the *hinge cover*.
8. Remove the *WLAN card*.
9. Remove the *display assembly*.
10. Remove the *display bezel*.
11. Remove the *display panel*.
12. Peel off the tape from the display cable.



13. Disconnect the display cable from the display panel.



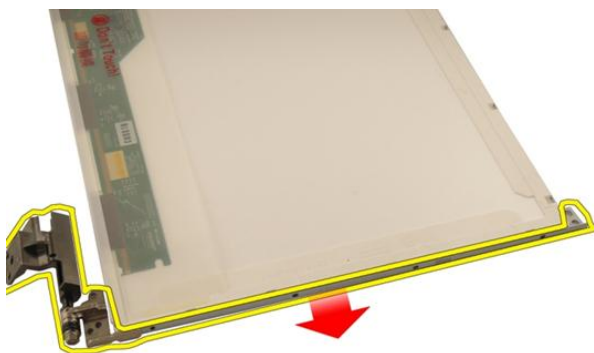
## Installing The Display Cable

1. Connect the display cable to the display panel.
2. Affix the tape to the display cable.
3. Install the *display panel*.
4. Install the *display bezel*.
5. Install the *display assembly*.
6. Install the *WLAN card*.
7. Install the *hinge cover*.
8. Install the *palm rest*.
9. Install the *optical drive*.
10. Install the *memory door*.
11. Install the *keyboard*.
12. Install the *battery*.
13. Follow the procedures in *After Working Inside Your Computer*.

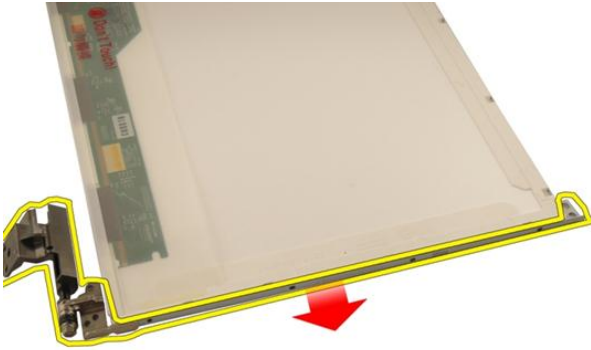
# Display Brackets and Hinges

## Removing The Display Brackets And Hinges

1. Follow the procedures in *Before Working On Your Computer*.
2. Remove the *battery*.
3. Remove the *keyboard*.
4. Remove the *memory door*.
5. Remove the *optical drive*.
6. Remove the *palm rest*.
7. Remove the *hinge cover*.
8. Remove the *WLAN card*.
9. Remove the *display assembly*.
10. Remove the *display bezel*.
11. Remove the *display panel*.
12. Remove the screws that secure the left-display bracket.



**13.** Remove the left-display bracket.

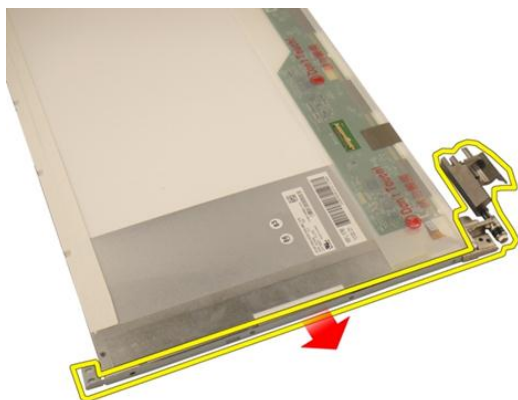


**14.** Remove the screws that secure the right-display bracket.



**15.** Remove the right-display bracket.





## Installing The Display Brackets And Hinges

1. Replace the screws to secure the left and the right display brackets.
2. Install the *display panel*.
3. Install the *display bezel*.
4. Install the *display assembly*.
5. Install the *WLAN card*.
6. Install the *hinge cover*.
7. Install the *palm rest*.
8. Install the *optical drive*.
9. Install the *memory door*.
10. Install the *keyboard*.
11. Install the *battery*.
12. Follow the procedures in *After Working Inside Your Computer*.



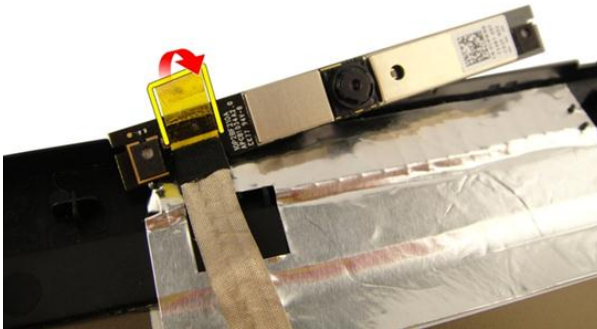
# Camera

## Removing The Camera Module

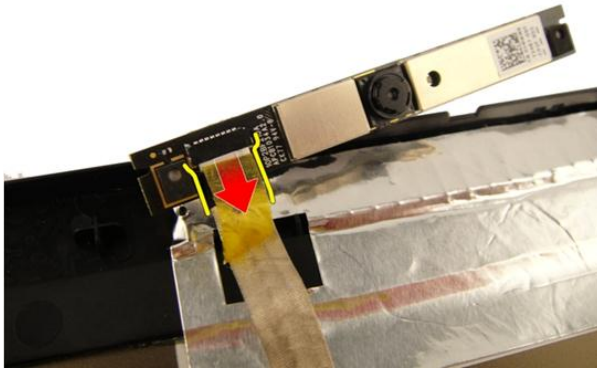
1. Follow the procedures in *Before Working On Your Computer*.
2. Remove the *battery*.
3. Remove the *media dummy card*.
4. Remove the *ExpressCard*.
5. Remove the *keyboard*.
6. Remove the *memory door*.
7. Remove the *optical drive*.
8. Remove the *palm rest*.
9. Remove the *hinge cover*.
10. Remove the *WLAN card*.
11. Remove the *display assembly*.
12. Remove the *display bezel*.
13. Remove the *display panel*.
14. Lift the camera module off the display cover.



15. Remove the tape from the camera module.



16. Disconnect the camera cable and remove the camera module.



## Installing The Camera Module

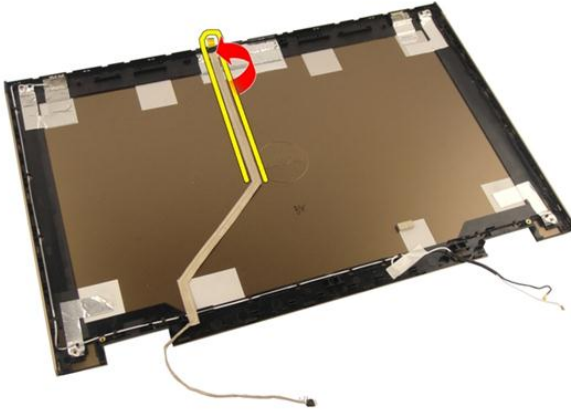
1. Connect the camera cable and the camera module.
2. Affix the tape to the camera module.
3. Install the *display panel*.
4. Install the *display bezel*.
5. Install the *display assembly*.
6. Install the *WLAN card*.
7. Install the *hinge cover*.
8. Install the *palm rest*.
9. Install the *optical drive*.
10. Install the *memory door*.
11. Install the *keyboard*.
12. Install the *ExpressCard*.
13. Install the *media dummy card*.
14. Install the *battery*.
15. Follow the procedures in *After Working Inside Your Computer*.



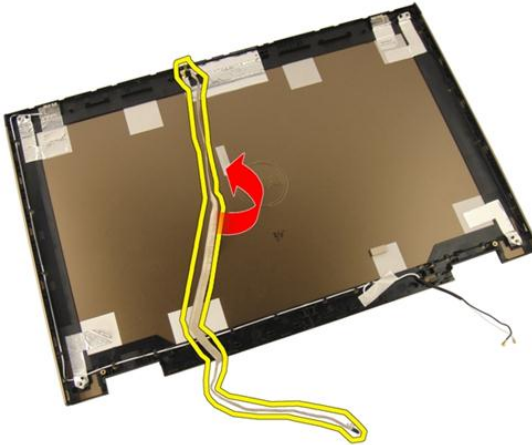
# Camera Cable

## Removing The Camera Cable

1. Follow the procedures in *Before Working On Your Computer*.
2. Remove the *battery*.
3. Remove the *media dummy card*.
4. Remove the *ExpressCard*.
5. Remove the *keyboard*.
6. Remove the *memory door*.
7. Remove the *optical drive*.
8. Remove the *palm rest*.
9. Remove the *hinge cover*.
10. Remove the *WLAN card*.
11. Remove the *display assembly*.
12. Remove the *display bezel*.
13. Remove the *display panel*.
14. Remove the *camera module*.
15. Remove the tape securing the camera cable.



16. Remove the camera cable off the display cover.



## Installing The Camera Cable

1. Install the camera cable.
2. Attach the tape that secures the camera cable.
3. Install the *camera module*.
4. Install the *display panel*.
5. Install the *display bezel*.
6. Install the *display assembly*.



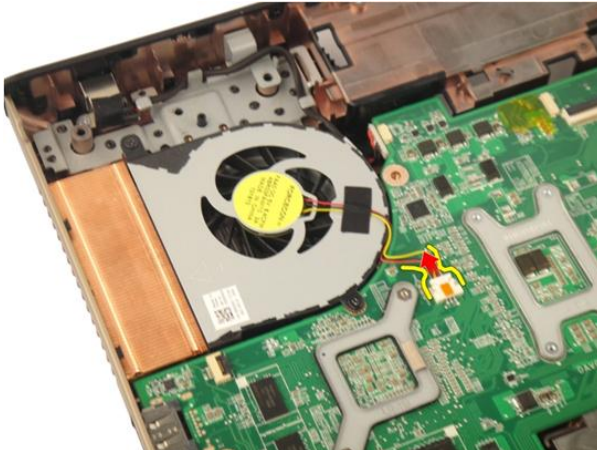
7. Install the *WLAN card*.
8. Install the *hinge cover*.
9. Install the *palm rest*.
10. Install the *optical drive*.
11. Install the *memory door*.
12. Install the *keyboard*.
13. Install the *ExpressCard*.
14. Install the *media dummy card*.
15. Install the *battery*.
16. Follow the procedures in *After Working Inside Your Computer*.



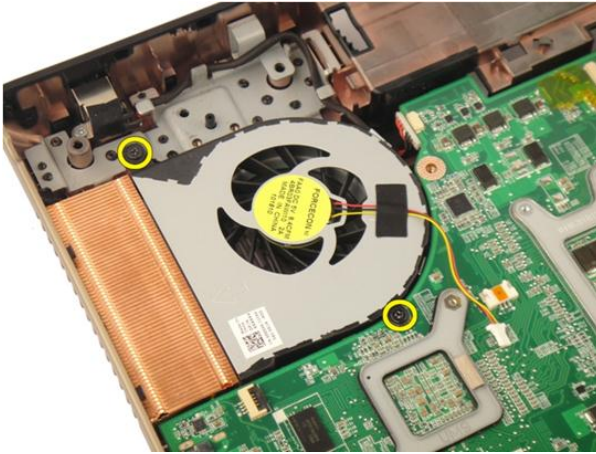
# System Fan

## Removing The System Fan

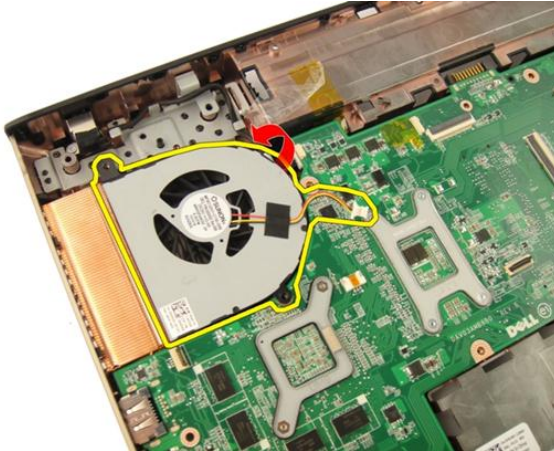
1. Follow the procedures in *Before Working On Your Computer*.
2. Remove the *battery*.
3. Remove the *keyboard*.
4. Remove the *memory door*.
5. Remove the *optical drive*.
6. Remove the *palm rest*.
7. Disconnect the fan cable from the system board.



8. Remove the screws that secure the system fan module.



9. Remove the system fan from the bottom base module.



## Installing The System Fan

1. Tighten the screws that secure the system fan module to the base of the computer.
2. Connect the system fan cable to the system board.
3. Install the *palm rest*.
4. Install the *optical drive*.
5. Install the *memory door*.
6. Install the *keyboard*.

7. Install the *battery*.
8. Follow the procedures in *After Working Inside Your Computer*.



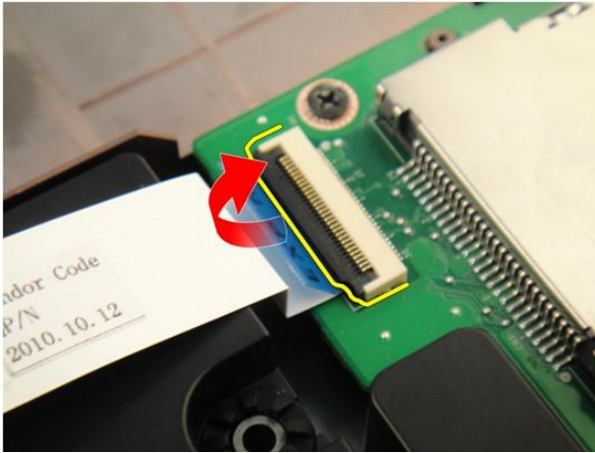
# ExpressCard Cable

## Removing The ExpressCard Cable

1. Follow the procedures in *Before Working On Your Computer*.
2. Remove the *battery*.
3. Remove the *keyboard*.
4. Remove the *memory door*.
5. Remove the *optical drive*.
6. Remove the *palm rest*.
7. Release the latch on the system board connector and then disconnect the ExpressCard board cable.



8. Release the latch on the ExpressCard board connector and then disconnect the ExpressCard cable.



## Installing The ExpressCard Cable

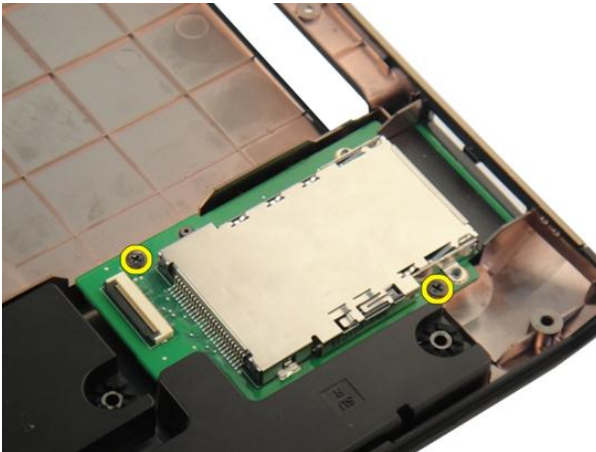
1. Tighten the latch on the ExpressCard board connector and then connect the ExpressCard cable.
2. Tighten the latch on the system board connector and then connect the ExpressCard board cable.
3. Install the *palm rest*.
4. Install the *optical drive*.
5. Install the *memory door*.
6. Install the *keyboard*.
7. Install the *battery*.
8. Follow the procedures in *After Working Inside Your Computer*.



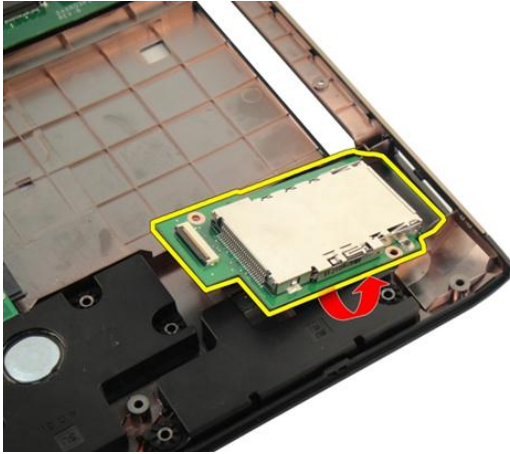
# ExpressCard Board

## Removing The ExpressCard Board

1. Follow the procedures in *Before Working On Your Computer*.
2. Remove the *battery*.
3. Remove the *keyboard*.
4. Remove the *memory door*.
5. Remove the *optical drive*.
6. Remove the *palm rest*.
7. Remove the *ExpressCard cable*.
8. Remove the screws that secure the ExpressCard board.



9. Remove the ExpressCard board.



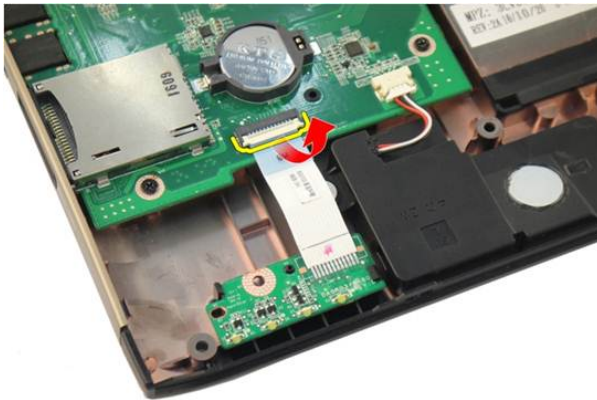
## Installing The ExpressCard Board

1. Install the screws securing the ExpressCard board to the computer.
2. Install the *ExpressCard cable*.
3. Install the *palm rest*.
4. Install the *optical drive*.
5. Install the *memory door*.
6. Install the *keyboard*.
7. Install the *battery*.
8. Follow the procedures in *After Working Inside Your Computer*.

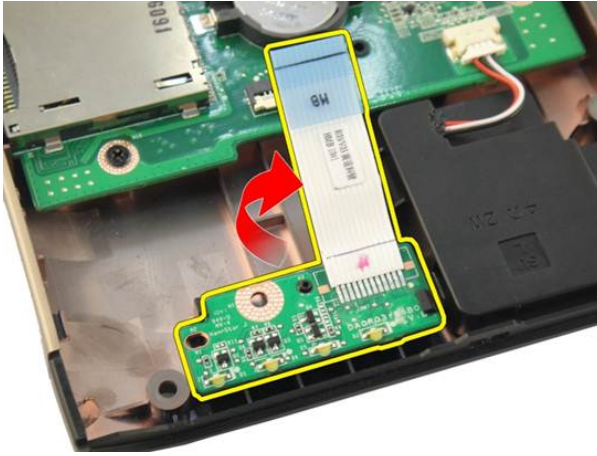
# LED Board

## Removing The LED Board

1. Follow the procedures in *Before Working On Your Computer*.
2. Remove the *battery*.
3. Remove the *keyboard*.
4. Remove the *memory door*.
5. Remove the *optical drive*.
6. Remove the *palm rest*.
7. Release the latch on system board connector and then disconnect the LED cable.



8. Remove the LED board from the chassis.



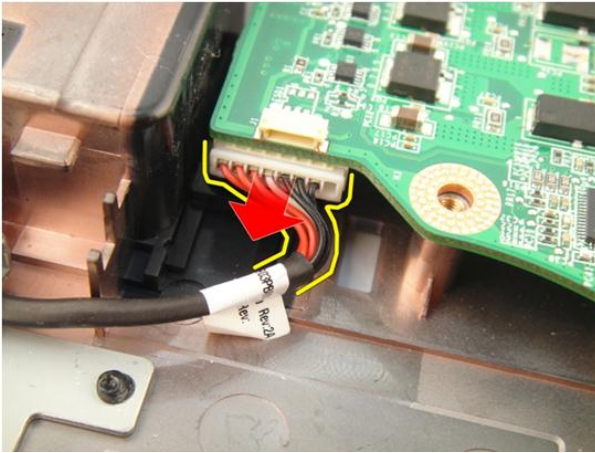
## Installing The LED Board

1. Align the LED board to the chassis.
2. Connect the LED cable to the system board connector.
3. Install the *palm rest*.
4. Install the *optical drive*.
5. Install the *memory door*.
6. Install the *keyboard*.
7. Install the *battery*.
8. Follow the procedures in *After Working Inside Your Computer*.

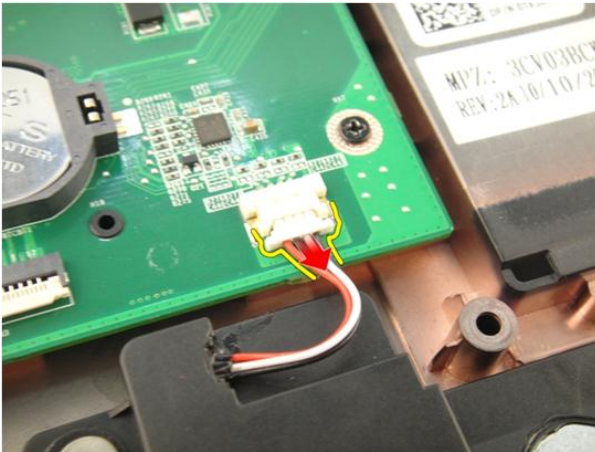
# System Board

## Removing The System Board

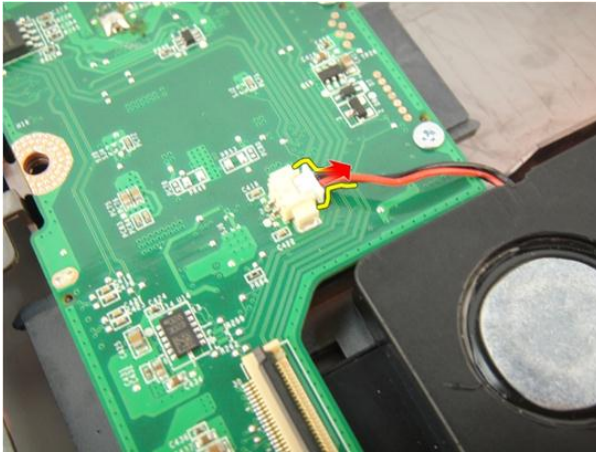
1. Follow the procedures in *Before Working On Your Computer*.
2. Remove the *battery*.
3. Remove the *media dummy card*.
4. Remove the *ExpressCard*.
5. Remove the *keyboard*.
6. Remove the *memory door*.
7. Remove the *optical drive*.
8. Remove the *palm rest*.
9. Remove the *hinge cover*.
10. Remove the *WLAN card*.
11. Remove the *display assembly*.
12. Remove the *system fan*.
13. Remove the *ExpressCard cable*.
14. Disconnect the DC-in cable from the system board.



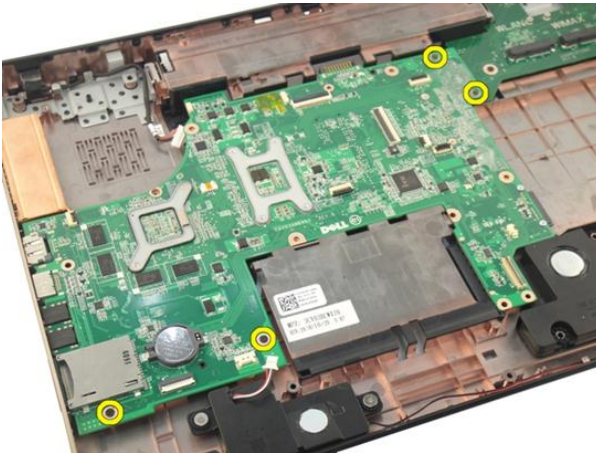
15. Disconnect the speaker cable from the system board.



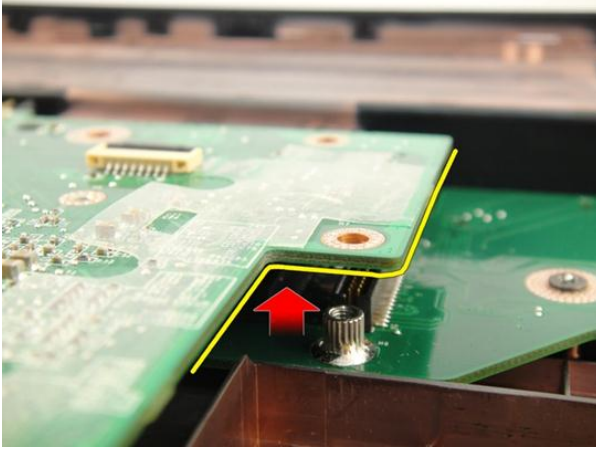
16. Disconnect the sub-woofer cable from the system board.



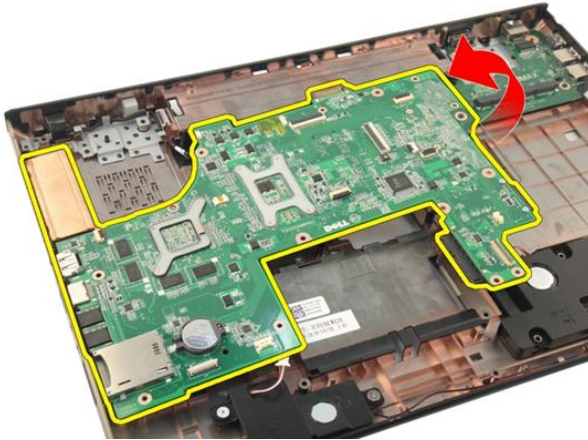
17. Remove the screws that secure the system board.



18. Disconnect the system board connector from the Input/Output (I/O) panel.



19. Lift and remove the system board from the chassis.



## Installing The System Board

1. Install all the cables to the system board.
2. Install the screws securing the system board to the base of the computer.
3. Replace the speaker cable and the sub-woofer cables.
4. Install the *ExpressCard* cable.
5. Install the *system fan*.
6. Install the *display assembly*.



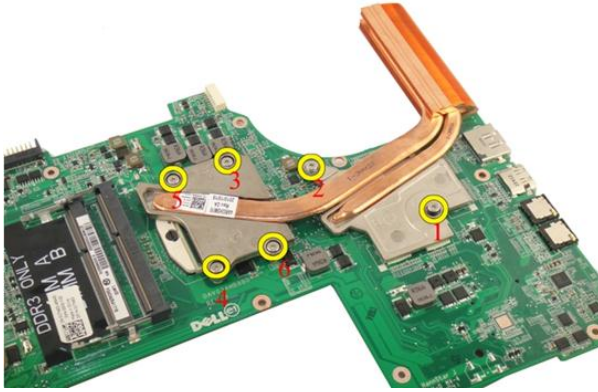
7. Install the *WLAN card*.
8. Install the *hinge cover*.
9. Install the *palm rest*.
10. Install the *optical drive*.
11. Install the *memory door*.
12. Install the *keyboard*.
13. Install the *ExpressCard*.
14. Install the *media dummy card*.
15. Install the *battery*.
16. Follow the procedures in *After Working Inside Your Computer*.



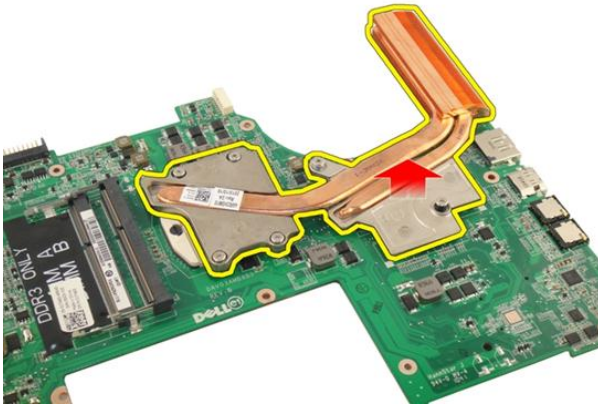
# Heat Sink

## Removing The Heatsink

1. Follow the procedures in *Before Working On Your Computer*.
2. Remove the *battery*.
3. Remove the *media dummy card*.
4. Remove the *ExpressCard*.
5. Remove the *keyboard*.
6. Remove the *memory door*.
7. Remove the *optical drive*.
8. Remove the *palm rest*.
9. Remove the *hinge cover*.
10. Remove the *WLAN card*.
11. Remove the *display assembly*.
12. Remove the *system fan*.
13. Remove the *ExpressCard cable*.
14. Remove the *system board*.
15. Remove the screws by following the sequence shown in the image.



16. Lift the heatsink up and remove it from the system board.



## Installing The Heatsink

1. Install the screws securing the heatsink to the system board.
2. Install the *system board*.
3. Install the *ExpressCard cable*.
4. Install the *system fan*.
5. Install the *display assembly*.
6. Install the *WLAN card*.

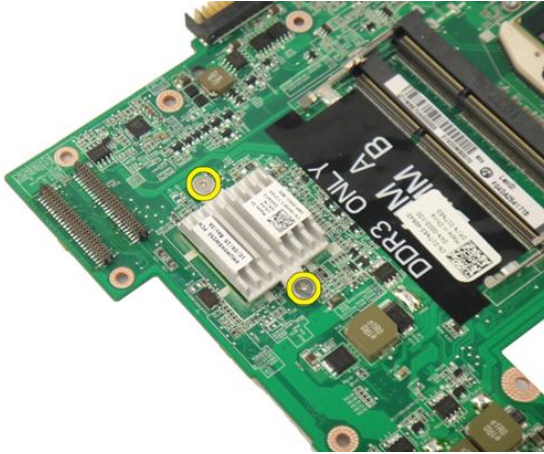
7. Install the *hinge cover*.
8. Install the *palm rest*.
9. Install the *optical drive*.
10. Install the *memory door*.
11. Install the *keyboard*.
12. Install the *ExpressCard*.
13. Install the *media dummy card*.
14. Install the *battery*.
15. Follow the procedures in *After Working Inside Your Computer*.



# PCH Heatsink

## Removing The PCH Heatsink

1. Follow the procedures in *Before Working On Your Computer*.
2. Remove the *battery*.
3. Remove the *media dummy card*.
4. Remove the *ExpressCard*.
5. Remove the *keyboard*.
6. Remove the *memory door*.
7. Remove the *optical drive*.
8. Remove the *palm rest*.
9. Remove the *hinge cover*.
10. Remove the *WLAN card*.
11. Remove the *display assembly*.
12. Remove the *system fan*.
13. Remove the *ExpressCard cable*.
14. Remove the *system board*.
15. Loosen the screws that secure the heatsink.



16. Lift the heatsink and remove it from the system board.



## Installing The PCH Heatsink

1. Tighten the screws that secure the PCH heatsink.
2. Install the *heatsink*.
3. Install the *system board*.
4. Install the *LED board*.
5. Install the *ExpressCard cable*.
6. Install the *system fan*.



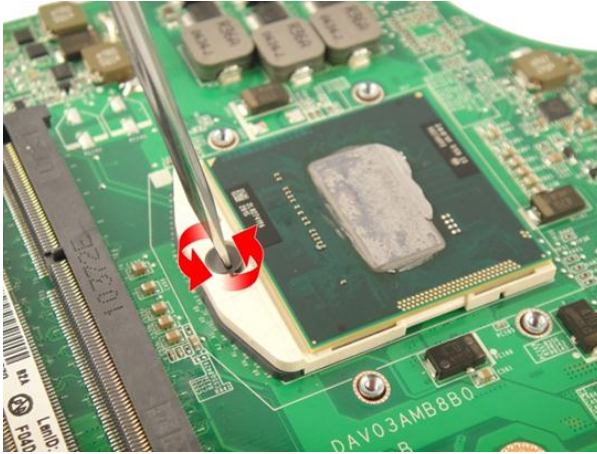
7. Install the *display assembly*.
8. Install the *WLAN card*.
9. Install the *hinge cover*.
10. Install the *palm rest*.
11. Install the *optical drive*.
12. Install the *memory door*.
13. Install the *keyboard*.
14. Install the *ExpressCard*.
15. Install the *media dummy card*.
16. Install the *battery*.
17. Follow the procedures in *After Working Inside Your Computer*.



# Processor

## Removing The Processor

1. Follow the procedures in *Before Working On Your Computer*.
2. Remove the *battery*.
3. Remove the *media dummy card*.
4. Remove the *ExpressCard*.
5. Remove the *keyboard*.
6. Remove the *memory door*.
7. Remove the *optical drive*.
8. Remove the *palm rest*.
9. Remove the *hinge cover*.
10. Remove the *WLAN card*.
11. Remove the *display assembly*.
12. Remove the *system fan*.
13. Remove the *ExpressCard cable*.
14. Remove the *system board*.
15. Remove the *heatsink*.
16. Rotate the processor-cam screw in counter-clockwise direction .



17. Lift the processor straight up from the socket and place it in an antistatic packaging.



## Installing The Processor

1. Insert the processor into the processor socket. Ensure the processor is properly seated.
2. Tighten the processor cam-screw in a clockwise direction.
3. Install the *heatsink*.
4. Install the *system board*.
5. Install the *ExpressCard cable*.

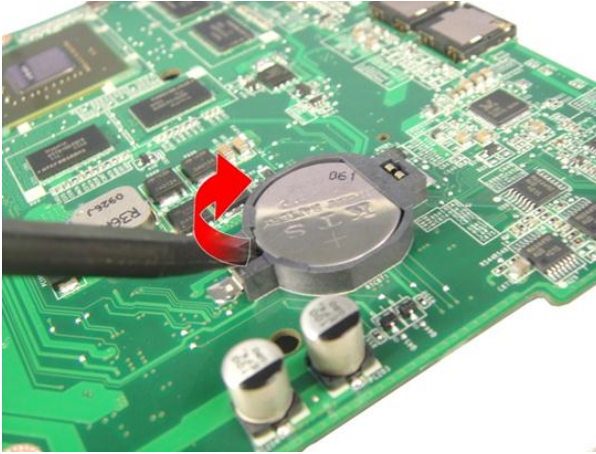
6. Install the *system fan*.
7. Install the *display assembly*.
8. Install the *WLAN card*.
9. Install the *hinge cover*.
10. Install the *palm rest*.
11. Install the *optical drive*.
12. Install the *memory door*.
13. Install the *keyboard*.
14. Install the *ExpressCard*.
15. Install the *media dummy card*.
16. Install the *battery*.
17. Follow the procedures in *After Working Inside Your Computer*.



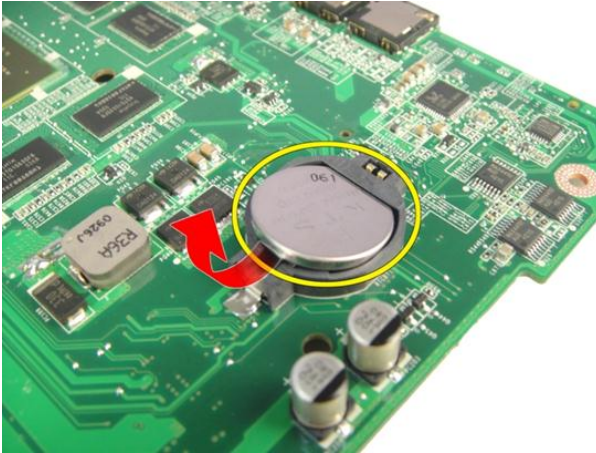
# Coin-Cell Battery

## Removing The Coin-Cell Battery

1. Follow the procedures in *Before Working On Your Computer*.
2. Remove the *battery*.
3. Remove the *media dummy card*.
4. Remove the *ExpressCard*.
5. Remove the *keyboard*.
6. Remove the *memory door*.
7. Remove the *optical drive*.
8. Remove the *palm rest*.
9. Remove the *hinge cover*.
10. Remove the *WLAN card*.
11. Remove the *display assembly*.
12. Remove the *system fan*.
13. Remove the *ExpressCard cable*.
14. Remove the *system board*.
15. Use a coin-cell battery remover to release the coin-cell battery.



16. Remove the coin battery from the socket.



## Installing The Coin-Cell Battery

1. Insert the coin-cell battery into the slot.
2. Install the *system board*.
3. Install the *ExpressCard cable*.
4. Install the *system fan*.
5. Install the *display assembly*.
6. Install the *WLAN card*.



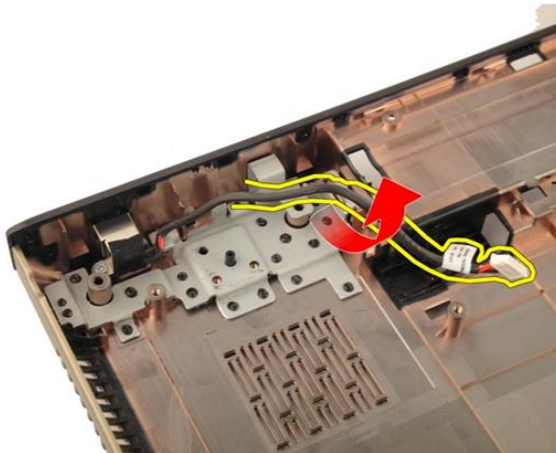
7. Install the *hinge cover*.
8. Install the *palm rest*.
9. Install the *optical drive*.
10. Install the *memory door*.
11. Install the *keyboard*.
12. Install the *ExpressCard*.
13. Install the *media dummy card*.
14. Install the *battery*.
15. Follow the procedures in *After Working Inside Your Computer*.



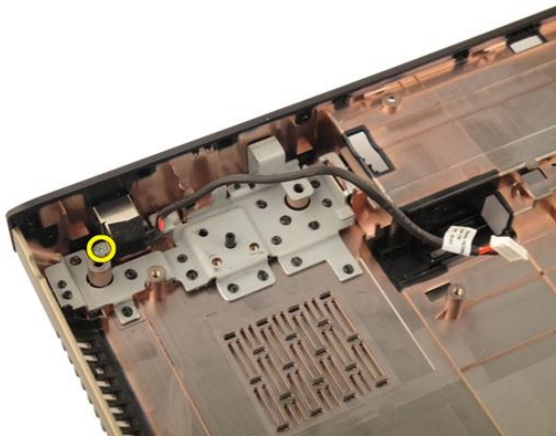
# DC-In Port

## Removing The DC-in Port

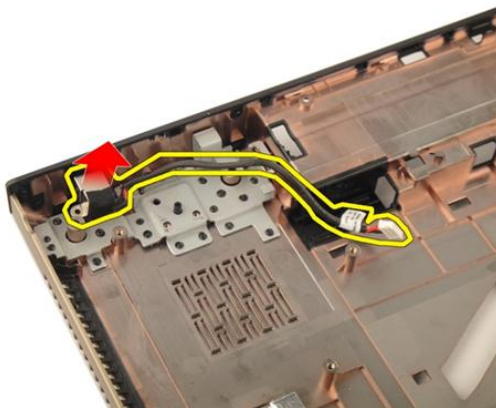
1. Follow the procedures in *Before Working On Your Computer*.
2. Remove the *battery*.
3. Remove the *keyboard*.
4. Remove the *memory door*.
5. Remove the *optical drive*.
6. Remove the *palm rest*.
7. Remove the *hinge cover*.
8. Remove the *WLAN card*.
9. Remove the *display assembly*.
10. Release the DC-in cable from the trough.



11. Remove the screw that secures the DC-in port.



12. Remove the DC-in port from the bottom base.



## Installing The DC-in Port

1. Tighten the screw to secure the DC-in port.
2. Install the *display assembly*.
3. Install the *WLAN card*.
4. Install the *hinge cover*.
5. Install the *palm rest*.
6. Install the *optical drive*.

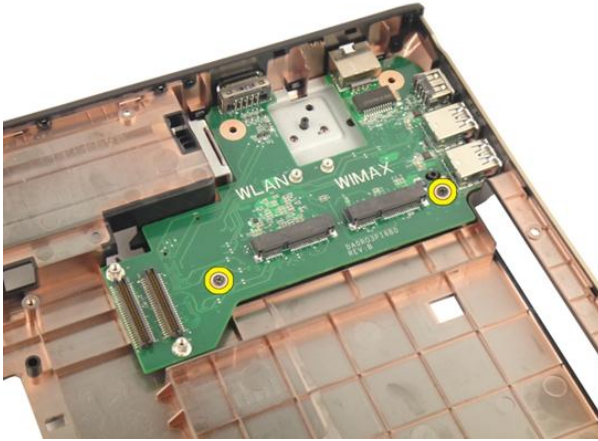
7. Install the *memory door*.
8. Install the *keyboard*.
9. Install the *battery*.
10. Follow the procedures in *After Working Inside Your Computer*.



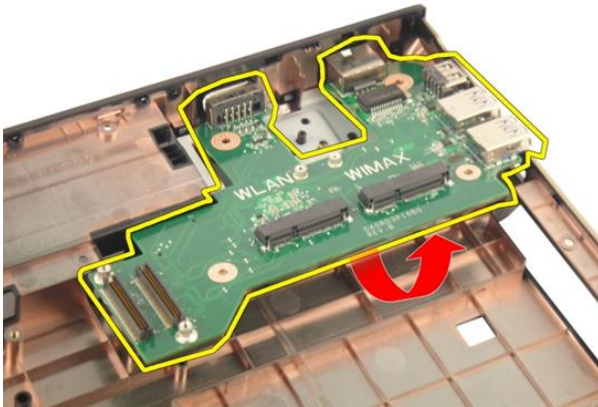
# Input/Output Board

## Removing The Input/Output (I/O) Panel

1. Follow the procedures in *Before Working On Your Computer*.
2. Remove the *battery*.
3. Remove the *media dummy card*.
4. Remove the *ExpressCard*.
5. Remove the *keyboard*.
6. Remove the *memory door*.
7. Remove the *optical drive*.
8. Remove the *palm rest*.
9. Remove the *hinge cover*.
10. Remove the *WLAN card*.
11. Remove the *display assembly*.
12. Remove the *system fan*.
13. Remove the *ExpressCard cable*.
14. Remove the *LED board*.
15. Remove the *system board*.
16. Remove the screws that secure the I/O panel.



17. Remove the I/O panel from the bottom base.



## Installing The Input/Output (I/O) Panel

1. Tighten the screw that secure the I/O panel.
2. Install the *system board*.
3. Install the *ExpressCard cable*.
4. Install the *system fan*.
5. Install the *display assembly*.
6. Install the *WLAN card*.



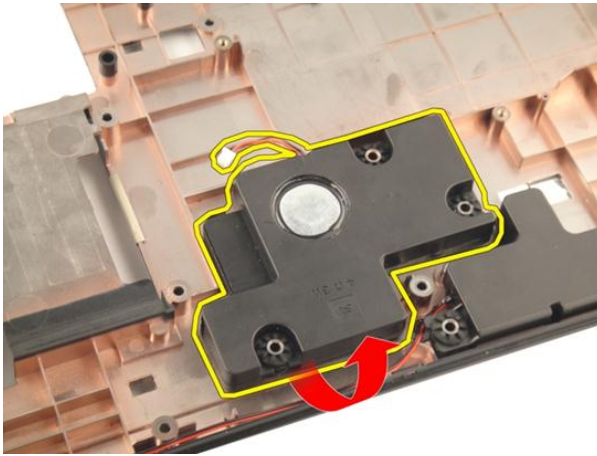
7. Install the *hinge cover*.
8. Install the *palm rest*.
9. Install the *optical drive*.
10. Install the *memory door*.
11. Install the *keyboard*.
12. Install the *ExpressCard*.
13. Install the *media dummy card*.
14. Install the *battery*.
15. Follow the procedures in *After Working Inside Your Computer*.



# Sub-Woofer

## Removing The SubWoofer

1. Follow the procedures in *Before Working On Your Computer*.
2. Remove the *battery*.
3. Remove the *media dummy card*.
4. Remove the *ExpressCard*.
5. Remove the *keyboard*.
6. Remove the *memory door*.
7. Remove the *optical drive*.
8. Remove the *palm rest*.
9. Remove the *hinge cover*.
10. Remove the *WLAN card*.
11. Remove the *display assembly*.
12. Remove the *system fan*.
13. Remove the *ExpressCard cable*.
14. Remove the *LED board*.
15. Remove the *system board*.
16. Remove the subwoofer from the bottom base.



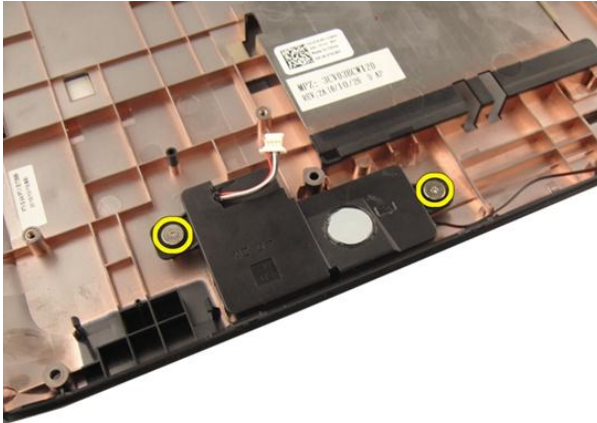
## Installing The SubWoofers

1. Install the subwoofer.
2. Install the *system board*.
3. Install the *LED board*.
4. Install the *ExpressCard cable*.
5. Install the *system fan*.
6. Install the *display assembly*.
7. Install the *WLAN card*.
8. Install the *hinge cover*.
9. Install the *palm rest*.
10. Install the *optical drive*.
11. Install the *memory door*.
12. Install the *keyboard*.
13. Install the *ExpressCard*.
14. Install the *media dummy card*.
15. Install the *battery*.
16. Follow the procedures in *After Working Inside Your Computer*.

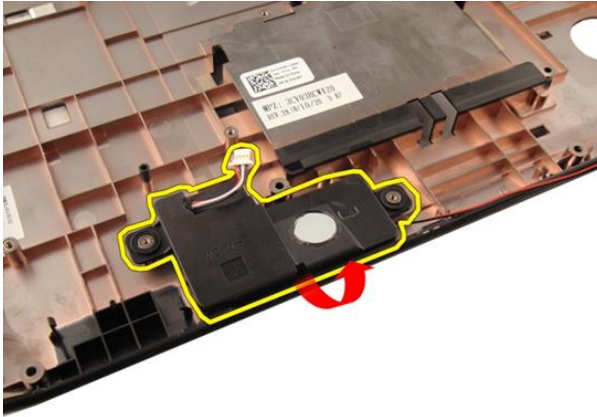
# Speaker

## Removing The Speakers

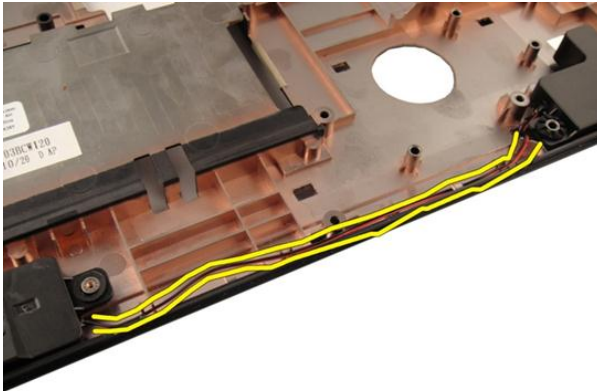
1. Follow the procedures in *Before Working On Your Computer*.
2. Remove the *battery*.
3. Remove the *keyboard*.
4. Remove the *memory door*.
5. Remove the *optical drive*.
6. Remove the *palm rest*.
7. Remove the screws that secure the speaker module.



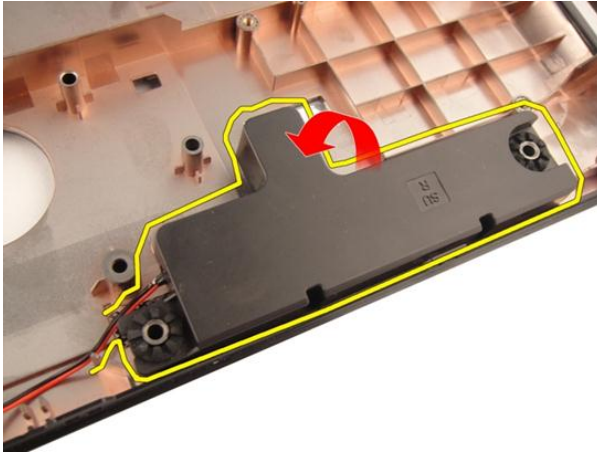
8. Lift the left speaker from the bottom base.



9. Release the speaker cable from the trough.



10. Lift the right speaker and remove the speaker module.



## Installing The Speakers

1. Align the right and the left speakers to the bottom base.
2. Install the screws that secure the speaker module.
3. Install the *palm rest*.
4. Install the *optical drive*.
5. Install the *memory door*.
6. Install the *keyboard*.
7. Install the *battery*.
8. Follow the procedures in *After Working Inside Your Computer*.





# System Setup

## System Setup Overview

System Setup allows you to:

- change the system configuration information after you add, change, or remove any hardware in your computer.
- set or change a user-selectable option such as the user password.
- read the current amount of memory or set the type of hard drive installed.

Before you use System Setup, it is recommended that you write down the System Setup screen information for future reference.



**CAUTION:** Unless you are an expert computer user, do not change the settings for this program. Certain changes can cause your computer to work incorrectly.

## System Setup Enter

1. Turn on (or restart) your computer.
2. When the blue DELL logo is displayed, you must watch for the F2 prompt to appear.
3. Once the F2 prompt appears, press <F2> immediately.



**NOTE:** The F2 prompt indicates that the keyboard has initialized. This prompt can appear very quickly, so you must watch for it to display, and then press <F2> . If you press <F2> before you are prompted, this keystroke will be lost.

4. If you wait too long and the operating system logo appears, continue to wait until you see the Microsoft Windows desktop. Then, shut down your computer and try again.

# System Setup Screens

**Menu** — Appears on top of the System Setup window. This field provides a menu to access the System Setup options. Press < Left Arrow > and < Right Arrow > keys to navigate. As a **Menu** option is highlighted, the **Options List** lists the options that define the hardware installed on your computer.

**Options List** — Appears on the left side of the System Setup window. The field lists features that define the configuration of your computer, including installed hardware, power conservation, and security features. Scroll up and down the list with the up- and down-arrow keys. As an option is highlighted, the **Options Field** displays the option's current and available settings.

**Options Field** — Appears on the right side of **Options List** and contains information about each option listed in the **Options List**. In this field you can view information about your computer and make changes to your current settings. Press < Enter > to make changes to your current settings. Press < ESC > to return to the **Options List**.

**Help** — Appears on the right side of the System Setup window and contains help information about the option selected in **Options List**.



**NOTE:** Not all settings listed in the Options Field are changeable.

**Key Functions** — Appears below the **Options Field** and lists keys and their functions within the active system setup field.

Use the following keys to navigate through the System Setup screens:

Keystroke	Action
< F2 >	Displays information on any selected item in the System Setup.
< Esc >	Exit from current view or switch the current view to the <b>Exit</b> page in the System Setup.
< Up Arrow > or < Down Arrow >	Select an item to display.
< Left Arrow > or < Right Arrow >	Select a menu to display.

Keystroke	Action
- or +	Change existing item value.
< Enter >	Select the sub menu or execute command.
< F9 >	Load setup default.
< F10 >	Save current configuration and exit System Setup.

## System Setup Options

### Main

#### System Information

System Date

Displays the computer model number.

Re-sets the date on the computer's internal calendar.

System Time

Re-sets the time on the computer's internal clock.

BIOS Version

Displays the BIOS revision.

Product Name

Displays the product name and the model number.

Service Tag

Displays the service tag of your computer.

Asset Tag

Displays the asset tag of your computer (if available).

#### Processor Information

CPU Type

Displays the type of processor.

CPU Speed

Displays the speed of the processor.

CPU ID

Displays the processor ID.

L1 Cache Size

Displays the processor L1 cache size.

L2 Cache Size

Displays the processor L2 cache size.

L3 Cache Size

Displays the processor L3 cache size.

#### Memory Information

Extended Memory

Displays the memory installed on the computer.

System Memory	Displays the memory in-built on the computer.
Memory Speed	Displays the memory speed.
<b>Device Information</b>	
Fixed HDD	Displays the model number and capacity of the hard drive.
SATA ODD	Displays the model number and capacity of the optical drive.
eSATA Device	Displays information about the installed eSATA device.
AC Adapter Type	Displays the type of the AC adapter.

## Advanced

Intel SpeedStep	Enable or disable the Intel SpeedStep feature.	Default: Enabled
Virtualization	Enable or disable the Intel Virtualization feature.	Default: Enabled
Integrated NIC	Enable or disable the power supply to the on-board network card.	Default: Enabled
USB Emulation	Enable or disable the USB emulation feature	Default: Enabled
USB Powershare	Allows the computer to charge external devices using the stored system battery power through the USB PowerShare port, even while the computer is turned off.	Default: Enabled
USB Wake Support	Allows USB devices to wake-up the computer from standby. This feature is enabled only when the AC adapter is connected.	Default: Disabled

SATA Operation	Change the SATA controller mode to either ATA or AHCI.	Default: AHCI
Adapter Warnings	Enables or disables adapter warnings.	Default: Enabled
Function Key Behavior	Specifies the behavior of the function key <Fn> .	Default: Function key first
Charger Behavior	Specifies if the computer battery will be charged when connected to an AC power source.	Default: Enabled
Miscellaneous Devices	These fields let you enable or disable various on board devices.	

## Security

Set Service Tag	This field displays your system's service tag. If the service tag is not already set, this field can be used to enter it.
Set Supervisor Password	Allows you to change or delete the administrator password.
Set HDD Password	Allows you to set a password on the computer's internal hard drive (HDD).
Password Bypass	Allows you to bypass the system password and the internal HDD password prompts during a system restart/resume from hibernate state.
Computrace	Enable or disable the Computrace feature on your computer.

## Boot

Boot Priority Order	Specifies the order of different devices in which the computer will boot through at start up.
Hard Disk Drives	Specify which hard drive the computer can boot through.

USB Storage Device

Specify which USB storage device the computer can boot through.

CD/DVD ROM Drives

Specify which CD/DVD the computer can boot through.

eSATA

Specify which eSATA device the computer can boot through.

Network





Specify which network device the computer can boot through.

## **Exit**

This section allows you to save, discard, and load default settings before exiting from System Setup.

# Diagnostics

## Device Status Lights

-  Turns on when you turn on the computer and blinks when the computer is in a power management mode.
-  Turns on when the computer reads or writes data.
-  Turns on steadily or blinks to indicate battery charge status.
-  Turns on when wireless networking is enabled.

## Battery Status Lights

If the computer is connected to an electrical outlet, the battery light operates as follows:

- **Alternately blinking amber light and white light** — An unauthenticated or unsupported non-Dell AC adapter is attached to your laptop.
- **Alternately blinking amber light with steady white light** — Temporary battery failure with AC adapter present.
- **Constantly blinking amber light** — Fatal battery failure with AC adapter present.
- **Light off** — Battery in full charge mode with AC adapter present.
- **White light on** — Battery in charge mode with AC adapter present.


## Diagnostic Beep Codes

The following table shows the possible beep codes that may be emitted by the computer when your computer is unable to complete a power on self test.

<b>Beep</b>	<b>Possible Cause</b>	<b>Troubleshooting Steps</b>
1	BIOS ROM checksum in progress of failure.	System board failure, covers BIOS corruption or ROM error
2	No RAM detected	No memory detected
3	<ul style="list-style-type: none"> <li>• Chipset Error (North and South Bridge Chipset, DMA/IMR/Timer Error)</li> <li>• Time-Of-Day Clock test failure</li> <li>• Gate A20 failure</li> <li>• Super I/O chip failure</li> <li>• Keyboard controller test failure</li> </ul>	System board Failure
4	RAM Read/Write failure	Memory failure
5	Real-time clock power fail	CMOS battery failure
6	Video BIOS Test Failure	Video card failure
7	Processor Failure	Processor Failure
8	Display	Display Failure



# Specifications

 **NOTE:** Offerings may vary by region. The following specifications are only those required by law to ship with your computer. For more information regarding the configuration of your computer, click **Start** → **Help and Support** and select the option to view information about your computer.

---

## System Information

---

### Chipset:

Vostro 3350/ 3450/ 3550/ 3750

Intel HM67

Vostro 3555

AMD A70M

### Processor:

Vostro 3350/ 3450/ 3550/ 3750

- Intel Core i3 / i5 series
- Intel Core i7 (Quad-Core for Vostro 3750 only)

Vostro 3555

- AMD Dual Core
- AMD Quad Core

---

## Memory

---

Memory connector

two SODIMM slots

Memory capacity

1 GB, 2 GB, and 4 GB

Memory type


DDR3 SDRAM with 1333 MHz

Minimum memory

2 GB

Maximum memory

8 GB

 **NOTE:** Only 64-bit operating systems can detect memory capacities greater than 4 GB.

---

**Video**

---

Video type	<ul style="list-style-type: none"><li>• integrated on system board</li><li>• discrete video card</li></ul>
------------	--

**Video controller and memory****UMA:**

Vostro 3350/ 3450/ 3550/ 3750	Intel Graphics Media Accelerator HD
Vostro 3555	AMD Radeon HD series — up to 256 MB / 512 MB of shared memory

**Discrete:**

Vostro 3350	AMD Radeon HD6490 GDDR5 - 512 MB
Vostro 3450/ 3550	AMD Radeon HD6630 - 1 GB VRAM
Vostro 3750	NVIDIA GeForce GT 525M - 1 GB

---

**Communications**

---

Network adapter	10/100/1000 Mbps Ethernet LAN
Wireless	internal wireless local area network (WLAN) and wireless wide area network (WWAN)

---

**Ports and Connectors**

---

Audio	one microphone connector and one stereo headphones/ external speakers connector
Video	
Vostro 3350/ 3450/ 3550/ 3555/ 3750	one 19-pin HDMI connector and one 15-pin VGA connector
Network adapter	one RJ-45 connector
USB	
Vostro 3350	two USB 3.0-compliant connectors and one eSATA/USB 2.0-compliant connector
Vostro 3450	two USB 3.0-compliant connectors, one USB 2.0-compliant connector and one eSATA/USB 2.0-compliant connector

---

## Ports and Connectors

---

Vostro 3550	two USB 3.0-compliant connectors, one USB 2.0-compliant connector and one eSATA/USB 2.0-compliant connector
Vostro 3555	three USB 3.0-compliant connectors and one eSATA/USB 2.0-compliant connector
Vostro 3750	two USB 3.0-compliant connectors, one USB 2.0-compliant connector and one eSATA/USB 2.0-compliant connector
Memory card reader	one 8-in-1 memory card reader
fingerprint reader	one

---

## Keyboard

---

### Number of keys

Vostro 3350/ 3450/ 3550/ 3555	United States: 86 keys, United Kingdom: 87 keys, Brazil: 87 keys, and Japan: 90 keys
Vostro 3750	United States: 101 keys United Kingdom: 102 keys Brazil: 104 keys Japan: 105 keys

Layout	QWERTY/AZERTY/Kanji
--------	---------------------

---

## Touchpad

---

### Active Area:

#### Vostro 3350/ 3450/ 3550/ 3555

X-axis	80.00 mm
Y-axis	40.70 mm

#### Vostro 3750

X-axis	95.00 mm
Y-axis	52.00 mm

---

## Display

---

### Vostro 3350

Type	white Light Emitting Diode (WLED) display
Size	13.3 inch high definition (HD)

---

## Display

---

Active area (X/Y)	293.42 mm x 164.97 mm
Dimensions:	
Height	189.00 mm (7.44 inches)
Width	314.00 mm (12.36 inches)
Diagonal	337.82 mm (13.30 inches)
Maximum resolution	1366 x 768 pixels at 263 K colors
Maximum Brightness	200 nits
Operating angle	0° (closed) to 135°
Refresh rate	60 Hz
Minimum Viewing angles:	
Horizontal	+/- 40°
Vertical	+10°/-30°
Pixel pitch	0.2148 mm

### Vostro 3450

Type	WLED display
Size	14.0 inch HD
Active area (X/Y)	309.40 mm x 173.95 mm
Dimensions:	
Height	192.50 mm (7.58 inches)
Width	324.00 mm (12.76 inches)
Diagonal	355.60 mm (14.00 inches)
Maximum resolution	1366 x 768 pixels at 263 K colors
Maximum Brightness	200 nits
Operating angle	0° (closed) to 135°
Refresh rate	60 Hz
Minimum Viewing angles:	
Horizontal	+/- 40°
Vertical	+10°/-30°

---

## Display

---

Pixel pitch	0.2265 mm
<b>Vostro 3550/3555</b>	
Type	WLED display
Size	15.6 inch HD
Active area (X/Y)	344.23 mm x 193.54 mm
Dimensions:	
Height	210.00 mm (8.26 inches)
Width	360.00 mm (14.17 inches)
Diagonal	396.24 mm (15.60 inches)
Maximum resolution	1366 x 768 pixels at 262K colors
Maximum Brightness	220 nits
Operating angle	0° (closed) to 135°
Refresh rate	60 Hz
Minimum Viewing angles:	
Horizontal	+/- 60°
Vertical	+/- 50°
Pixel pitch	0.252 mm
<b>Vostro 3750</b>	
Type	WLED display
Size	17.3 inch HD
Active area (X/Y)	382.08 mm x 214.92 mm
Dimensions:	
Height	398.60 mm
Width	233.30 mm
Diagonal	439.42 mm
Maximum resolution	1600 x 900 pixels at 262K colors
Maximum Brightness	200 nits
Operating angle	0° (closed) to 135°

---

**Display**

---

Refresh rate	60 Hz
Minimum Viewing angles:	
Horizontal	+/- 40°
Vertical	+10°/- 30°
Pixel pitch	0.238 mm

---

**Battery**

---

## Vostro 3350

## Type

- 4-cell "smart" lithium ion (2.8 AHr)
- 8-cell "smart" lithium ion (2.8 AHr)

## Dimensions:

Depth	4-cell — 43.45 mm (1.71 inches) 8-cell — 43.45 mm (1.71 inches)
Height	4-cell — 19.10 mm (0.75 inch) 8-cell — 42.36 mm (1.67 inches)
Width	4-cell — 199.10 mm (7.84 inches) 8-cell — 270.00 mm (10.63 inches)

## Weight

- |                             |
|-----------------------------|
| 4-cell — 230.00 g (0.51 lb) |
| 8-cell — 446.00 g (0.98 lb) |

## Voltage

14.8 VDC

## Vostro 3450/3550/3555

## Type

- 6-cell "smart" lithium ion (2.2 AHr)
- 9-cell "smart" lithium ion (2.8 AHr)

## Dimensions:

---

**Battery**

---

Depth	6-cell / 9-cell — 57.80 mm (2.27 inches)
Height	6-cell — 20.80 mm (0.81 inch) 9-cell — 40.15 mm (1.58 inches)
Width	6-cell / 9-cell — 255.60 mm (10.06 inches)
Weight	6-cell — 340.00 g (0.75 lb) 9-cell — 504.50 g (1.11 lb)
Voltage	11.1 VDC
Vostro 3750	
Type	<ul style="list-style-type: none"><li>• 6-cell "smart" lithium ion (2.6 Ahr)</li><li>• 9-cell "smart" lithium ion (2.8 Ahr)</li></ul>
Dimensions:	
Depth	6-cell — 57.80 mm (2.27 inches) 9-cell — 57.80 mm (2.27 inches)
Height	6-cell — 20.80 mm (0.82 inch) 9-cell — 40.15 mm (1.58 inches)
Width	6-cell/9-cell — 255.60 mm (10.06 inches)
Weight	6-cell — 340.00 g (0.75 lb) 9-cell — 504.50 g (1.11 lb)
Voltage	11.1 VDC
Temperature range:	

---

**Battery**

---

Operating	0 °C to 35 °C (32 °F to 95 °F)
Non-operating	-40 °C to ~65 °C (-40 °F to ~149 °F)
Coin-cell battery	3 V CR2032 lithium ion

---

**AC Adapter**

---

Input voltage	100 VAC to 240 VAC
Input current (maximum)	1.5 A / 1.6 A / 1.7 A / 2.3 A / 2.5 A
Input frequency	50 Hz to 60 Hz
Output power	65 W, 90 W, or 130 W



**NOTE:** 130 W AC power adapter is available for Vostro 3750 only.

**Output current:**

65 W	<ul style="list-style-type: none"><li>• 4.34 A (maximum at 4-second pulse)</li><li>• 3.34 A (continuous)</li></ul>
------	--

90 W	<ul style="list-style-type: none"><li>• 5.62 A (maximum at 4-second pulse)</li><li>• 4.62 A (continuous)</li></ul>
------	--

130 W	6.70 A (continuous)
-------	---------------------

Rated output voltage	19.5 +/- 1.0 VDC
----------------------	------------------

**Dimensions:****65 W:**

Height	28.30 mm (1.11 inches)
Width	137.20 mm (5.40 inches)
Depth	57.80 mm (2.27 inches)

**90 W:**

Height	22.60 mm (0.88 inch)
Width	147.00 mm (5.78 inches)



---

**AC Adapter**

---

Depth	70.00 mm (2.75 inches)
130 W:	
Height	25.40 mm (1.00 inch)
Width	154.70 mm (6.09 inches)
Depth	76.20 mm (3.00 inches)
Temperature range:	
Operating	0 °C to 35 °C (32 °F to 95 °F)
Non Operating	-40 °C to 65 °C (-40 °F to 149 °F)

---

**Physical**

---

## Vostro 3350:

Height	27.30 mm to 29.80 mm (1.07 inches to 1.17 inches)
Width	329.20 mm (12.96 inches)
Depth	228.50 mm (9.00 inches)
Weight (Minimum)	2.04 kg (4.50 lb)

## Vostro 3450:

Height	30.60 mm to 33.20 mm (1.20 inches to 1.31 inches)
Width	343.00 mm (13.50 inches)
Depth	245.80 mm (9.68 inches)
Weight (Minimum)	2.28 kg (5.02 lb)

## Vostro 3550/3555:

Height	30.40 mm to 34.80 mm (1.20 inches to 1.37 inches)
Width	375.40 mm (14.78 inches)
Depth	260.20 mm (10.24 inches)
Weight (Minimum)	2.47 kg (5.45 lb)

## Vostro 3750:

---

**Physical**

---

Height	30.80 mm to 34.80 mm (1.21 inches to 1.37 inches)
Width	418.40 mm (16.47 inches)
Depth	286.70 mm (11.29 inches)
Weight (Minimum)	3.00 kg (6.62 lb)

---

**Environmental**

---

## Temperature:

Operating	10 °C to 35 °C (50 °F to 95 °F)
-----------	---------------------------------

Storage	-40 °C to 65 °C (-40 °F to 149 °F)
---------	------------------------------------

## Relative humidity (Maximum):

Operating	10 % to 90 % (noncondensing)
-----------	------------------------------

Storage	5 % to 95 % (noncondensing)
---------	-----------------------------

## Airborne contaminant level

	G1 or lower as defined by ISA-S71.04–1985
--	---

# Contacting Dell

## Contacting Dell



**NOTE:** If you do not have an active Internet connection, you can find contact information on your purchase invoice, packing slip, bill, or Dell product catalog.

Dell provides several online and telephone-based support and service options. Availability varies by country and product, and some services may not be available in your area. To contact Dell for sales, technical support, or customer service issues:

1. Visit **support.dell.com**.
2. Select your support category.
3. If you are not a U.S. customer, select your country code at the bottom of the page, or select **All** to see more choices.
4. Select the appropriate service or support link based on your need.