



 **CMSTORM**
SENTINEL
ADVANCE II

Manual

Binding a Keyboard Key to a Mouse Button



1. Click on the 'Main Control' tab.
2. Click on the Profile that you would like to change the key bindings for. This must be one of the four available custom profiles.
3. Determine which button you would like to reassign and left-click the drop-down arrow.
4. Scroll down the list of available choices and select 'Keyboard'.

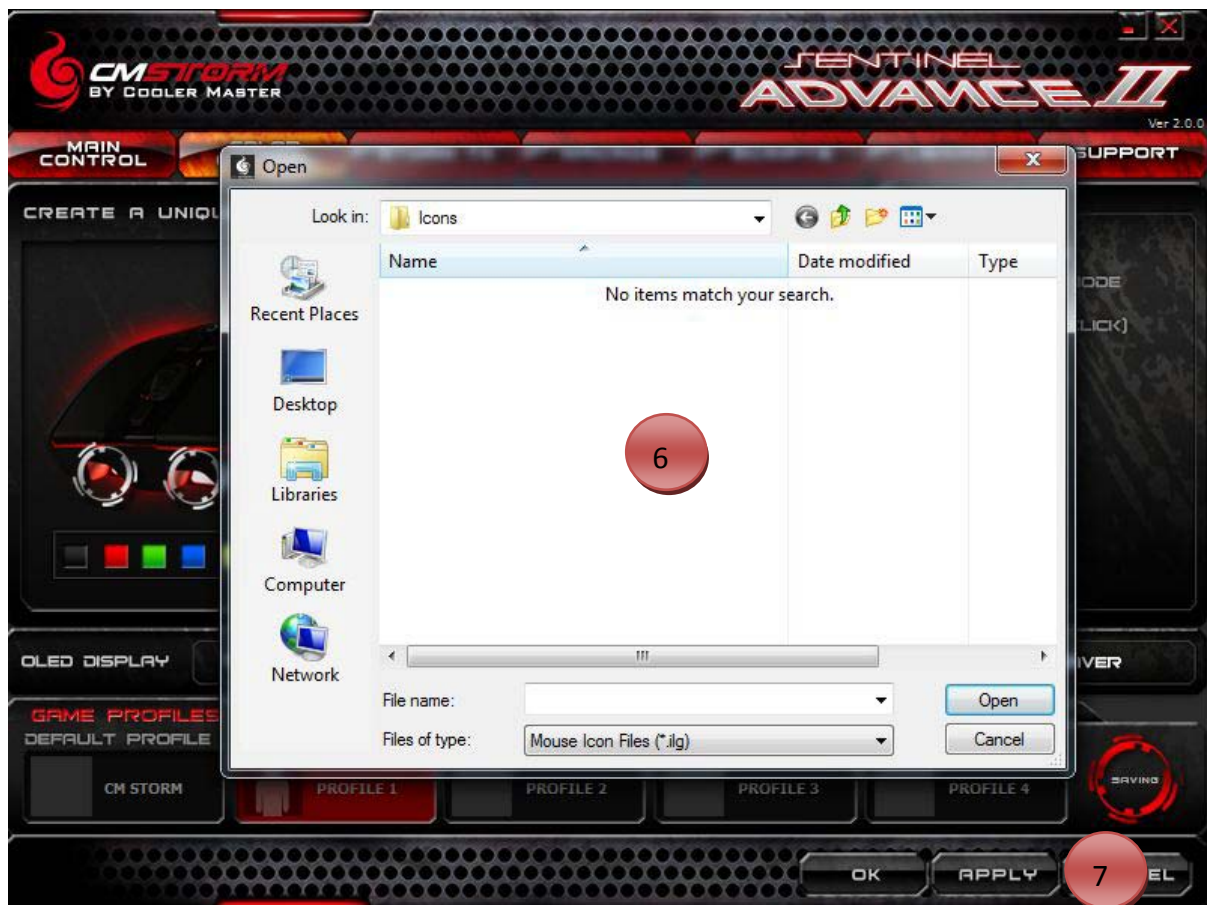


5. The keyboard command comes bound to a generic key. Determine which keys you would like to bind (Maximum of 3) and click the 'clear button'. This is represented by a white capital 'C'.
6. The field is now clear. Press anywhere from 1 to 3 keys on your keyboard that you would like bound. If you are unsatisfied with the keys, simply press the clear button to start over.
7. Once finished with binding keys, click the 'Apply' button in the bottom right.

Changing Mouse LED Colors & OLED Logo



1. Select the 'Color Control' tab.
2. Click the square with the color that you would like the front mouse LEDs to be.
3. Click the square with the color that you would like the top mouse LEDs to be.
4. Click the red box next to the LED Mode that you would like to use. The red box will turn yellow to indicate which mode is currently selected.
 - a. Available Modes: Always On, Breathing Mode (Light brightens and dims to resemble a breathing effect), Rapid Fire (Lights turn off on mouse click and light back up on mouse release), Disabled (turns all mouse LEDs off)
5. If a logo change is desired, click the folder icon in the 'Add a Custom OLED Logo' section.



6. Browse your computer and select a Mouse Icon File or Bitmap image file. Given the size of the screen, the maximum image size is 32 x 32 pixels. This image must be grayscale.
7. Click the 'Apply' button when all changes have been completed. This will save your new settings.

Customizing DPI Settings



1. Select the 'Main Control' tab.
2. DPI Settings are located here.
3. Select a DPI preset and adjust the DPI to a desired speed by selecting a position on the slider or manually typing in a DPI setting. The slider adjusts in increments of +/- 200. Any number between 200 and 8200 may be entered manually in the boxes.
4. The X and Y axis can be adjusted independently by clicking the lock icon next to the DPI boxes.
5. Once all adjustments have been completed, click the 'Apply' button to save your changes.

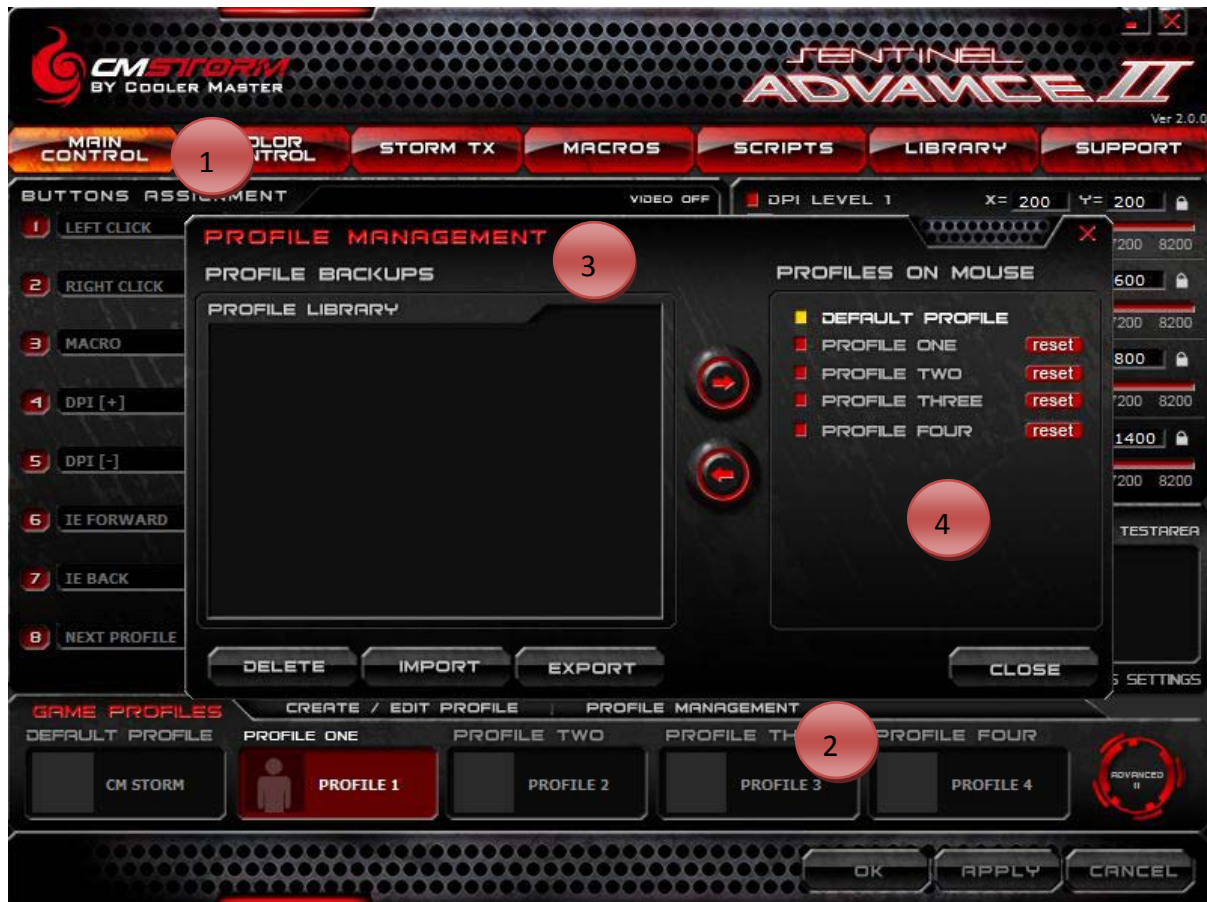


Library



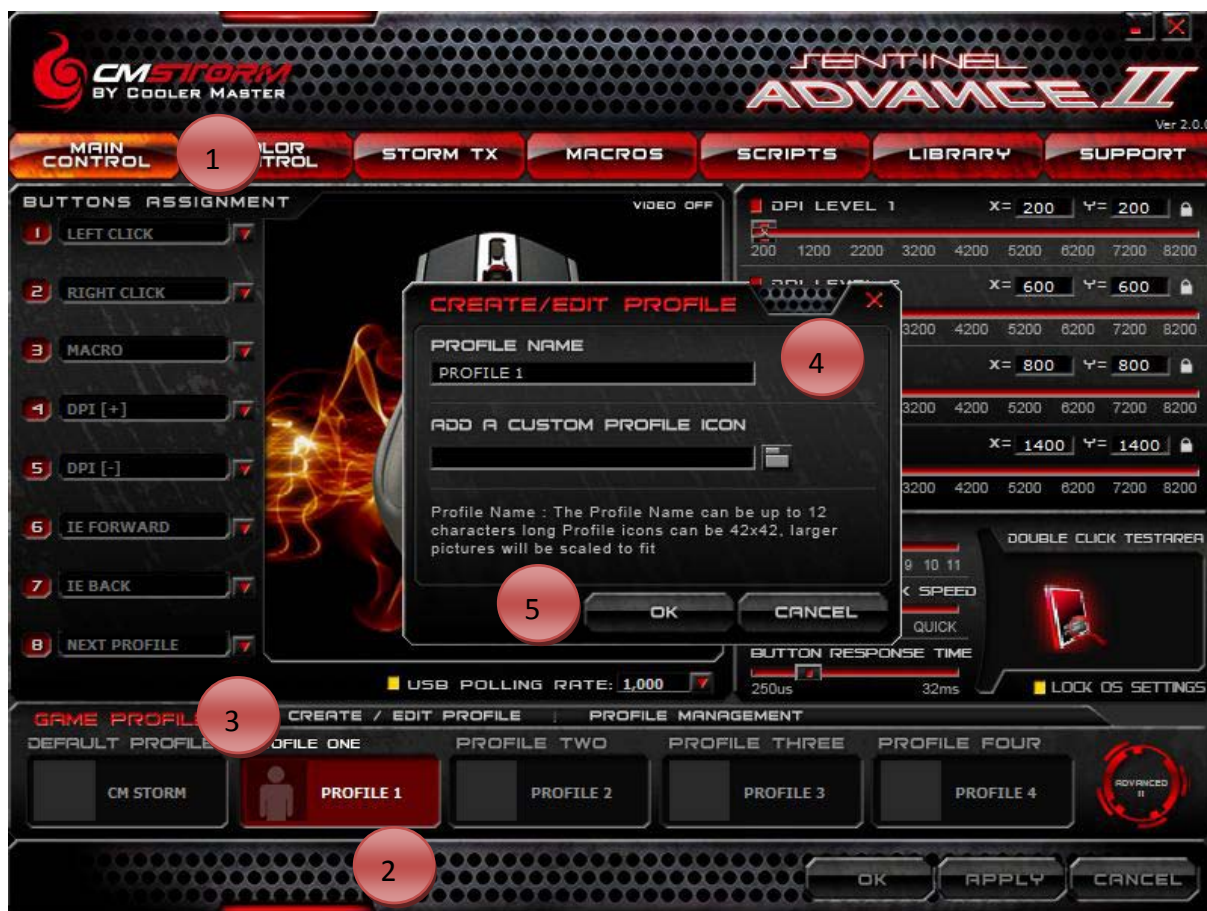
1. Click the 'Library' tab. Macros & Scripts can be Imported, Exported, or Deleted through here.
2. Utilize the 'Import' button to import downloaded or saved profiles. Use the 'Export' button to store mouse macros and scripts in another location or so that you can share them with others.
3. The 'Profile Backup Files' section lists all saved macro and script files that are not currently stored on the mouse.
4. Utilize these buttons to transfer macros and scripts to or from the onboard mouse memory.

Profile Management



1. Click the 'Main Control' tab.
2. Click the 'Profile Management' text.
3. View, Import, Export, Delete, or Save profiles from this pop-up window.
4. Manage onboard mouse profiles from this section. Profiles can be individually reset back to factory defaults through the red 'Reset' button.

Create / Edit Profiles



1. Click the 'Main Control' tab.
2. Select the Profile that you would like to Edit or Recreate.
3. Click the 'Create / Edit Profile' text.
4. Profile names and icons can be customized through this pop-up window. Profile names can be no longer than 12 characters. The maximum size of a Profile Icon is 42 x 42 pixels. Larger pictures will be scaled to fit this size.
5. Once all changes have been completed, click the 'OK' button. Changes to profile names and icons will be updated to reflect your preferences.

Creating a Macro



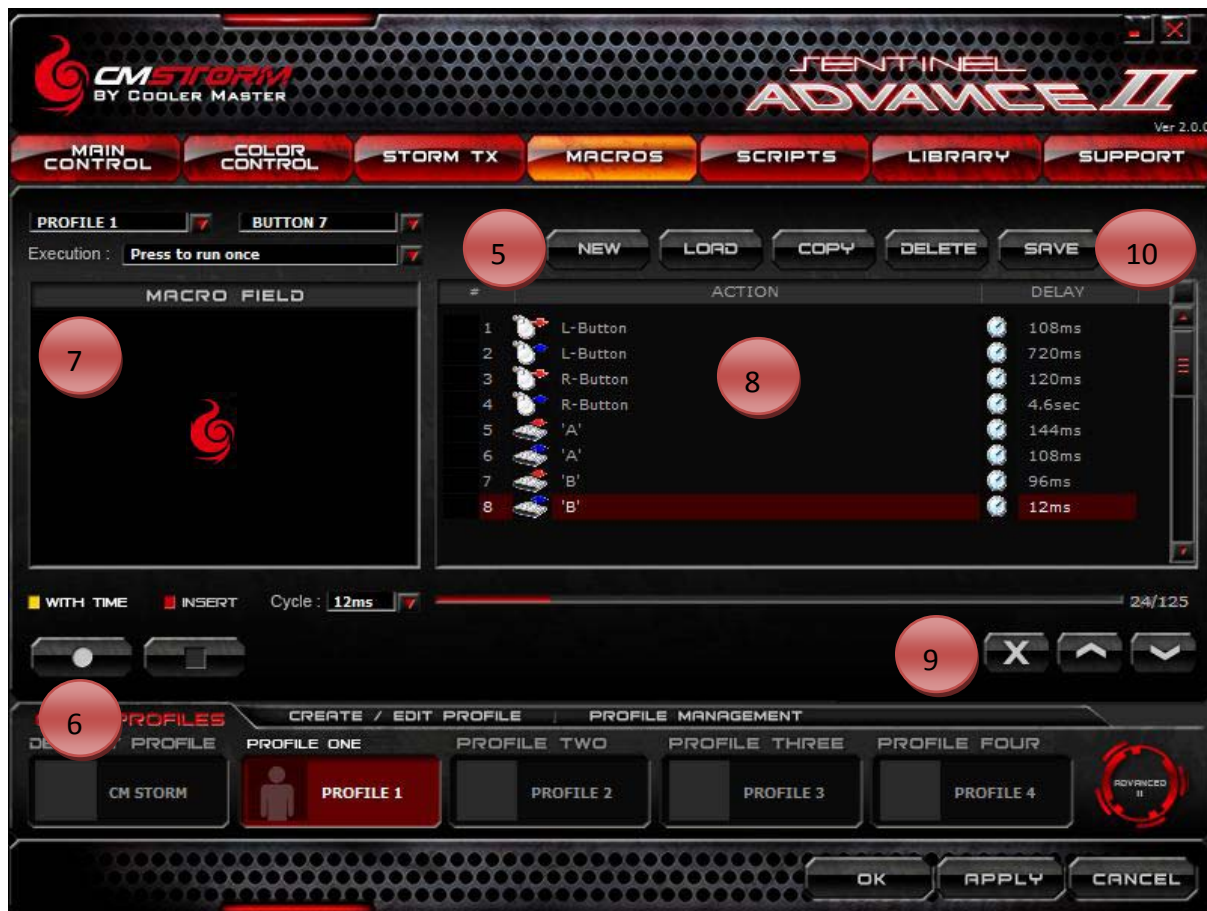
1. Click the 'Macros' tab.
2. Select a Profile to store this macro under through the first drop-down list.



3. Select a Button / Storm TX button to apply this macro to.



4. Select how the macro will be executed (e.g. Press to run once, Release to run once, Press to Loop, and more).



5. Click the 'New' button.
6. Click the 'Record' button. This is represented by a solid white circle. This starts recording keyboard key and mouse button presses until the 'Stop' button is pressed. The 'Stop' button is represented by a solid white square and is located next to the 'Record' button. The 'Stop' button will only be clickable when recording is active.
7. Hover over the 'Macro Field' black box to record mouse button presses while recording is active. If recording is active, the mouse cursor should turn into a CM Storm logo when you hover over this area.
8. Commands will register in this box. The recorder will register both pressing and releasing a button or key.
9. The white X, Up Arrow, and Down Arrow buttons control command deletion and reordering commands within the action window. Select the action you want to adjust or delete and click the desired button.
10. When all macro recording and changes have been completed, click the save button and name your macro.

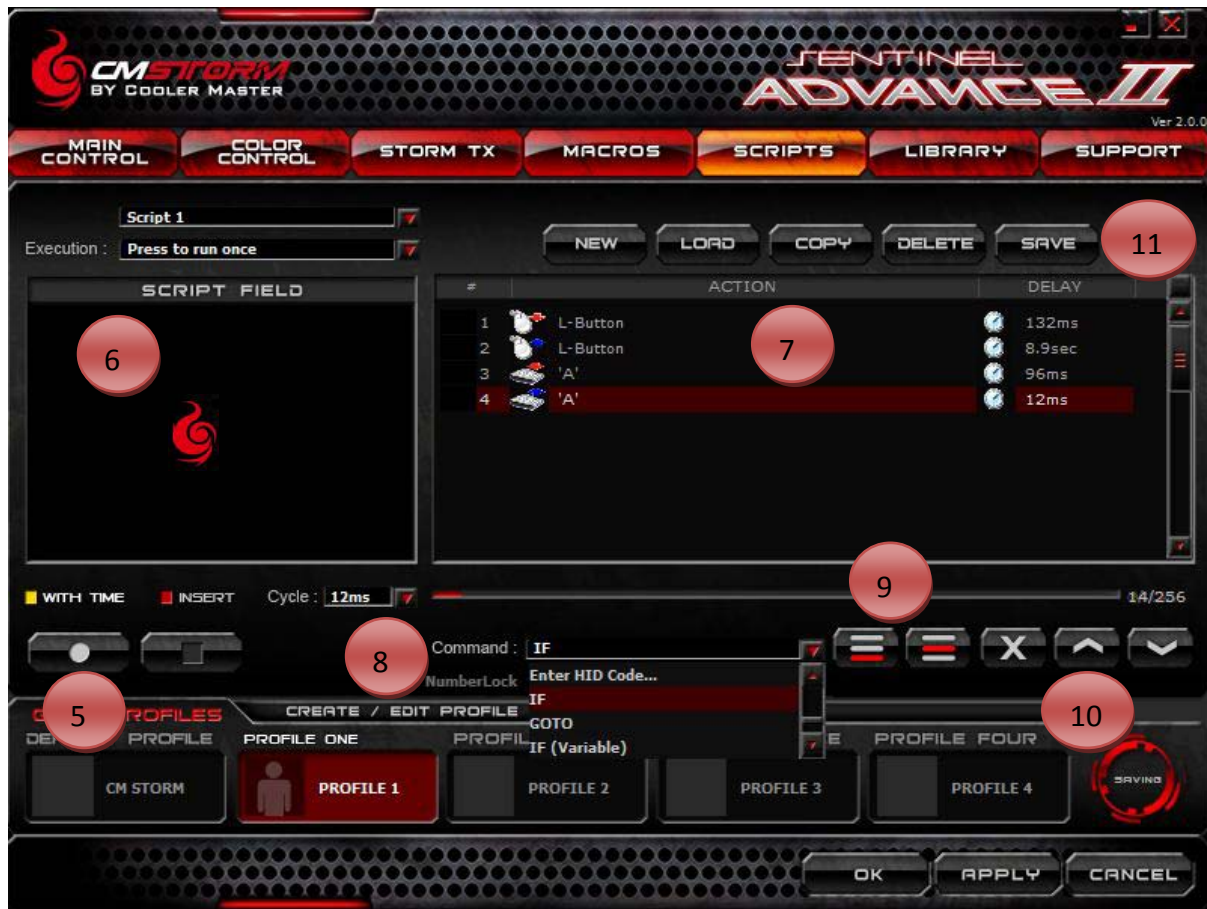
Creating a Script



1. Click the 'Scripts' tab.
2. Select a Script to configure from the drop-down list.



3. Select how the script will be executed (e.g. Press to run once, Release to run once, Press to Loop, and more).
4. Click the 'New' button.



5. Click the 'Record' button. This is represented by a solid white circle. This starts recording keyboard key and mouse button presses until the 'Stop' button is pressed. The 'Stop' button is represented by a solid white square and is located next to the 'Record' button. The 'Stop' button will only be clickable when recording is active.
6. Hover over the 'Script Field' black box to record mouse button presses while recording is active. If recording is active, the mouse cursor should turn into a CM Storm logo when you hover over this area.
7. Commands will register in this box. The recorder will register both pressing and releasing a button or key.
8. Use this drop-down to insert advanced commands. This list includes accessing media controls (play, pause, next track, and etc.), My Computer, various situational variables relating to IF and GOTO, and more.
9. These buttons control adding the advanced commands listed in Step 8 and inserting these commands into a user specified part of the action list above.
10. The white X, Up Arrow, and Down Arrow buttons control command deletion and reordering commands within the action window. Select the action you want to adjust or delete and click the desired button.
11. When all macro recording and changes have been completed, click the save button

and name your script.

Configuring the Storm TX Button

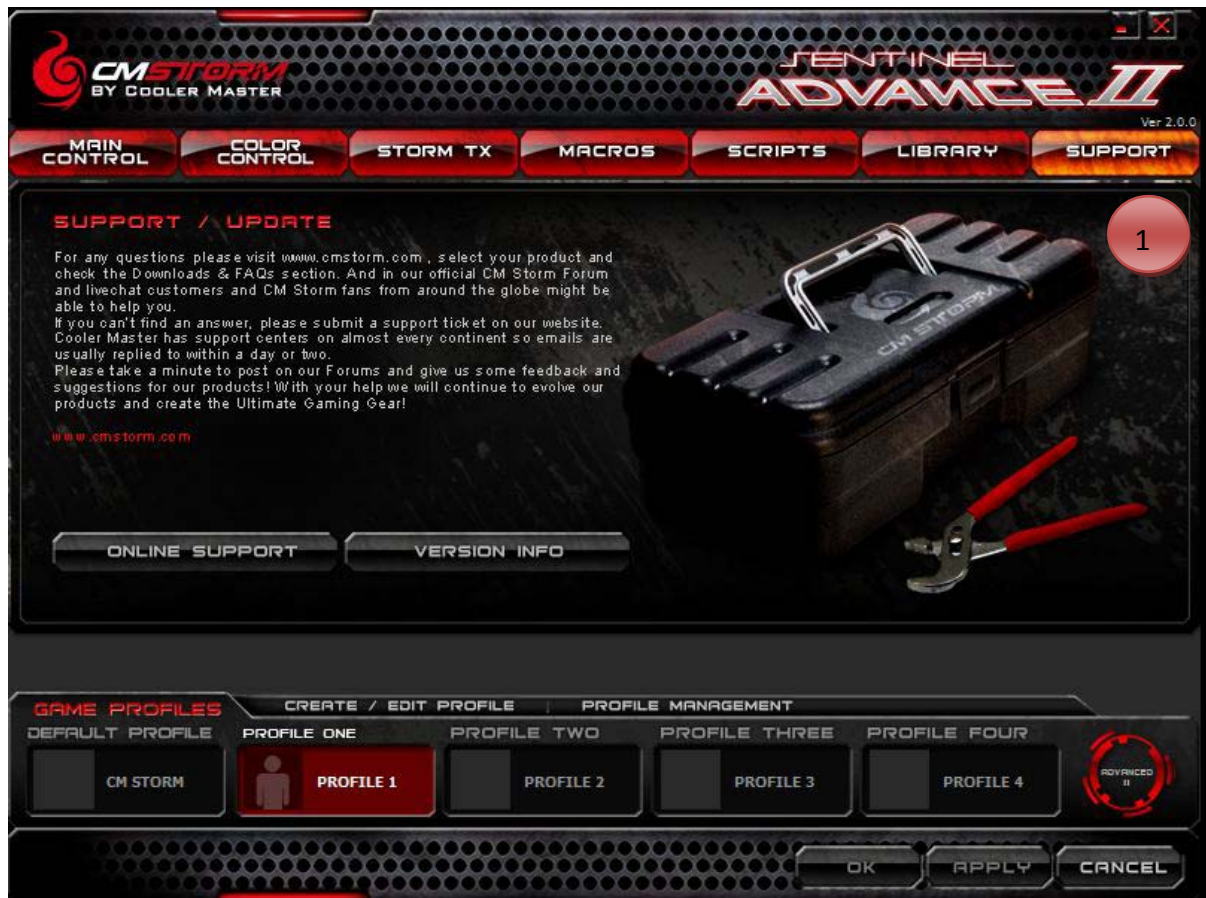


1. Click the 'Storm TX' tab. This section turns button 7 (default function: browser back) into a combo button for multiple commands at once.
2. Click the checkbox next to the number that you would like to configure and use.



3. Click and select which button you would like to add to the combo in each of the 3 drop-down lists for the given setting.
4. Repeat these steps for each of the settings that you would like to setup.
5. Number 8 and 9 can apply script activation or button presses to your mouse scroll up or down.
6. When all desired changes have been made, click the 'Apply' button.

Support Tab Features



1. Utilize this tab for links to Online Support for CM Storm. Version information is provided here and can be helpful in the event of an unforeseen software issue.