



Guides on Using Product Functions (Windows, Mac)

Please read this manual carefully before operating your set and retain it for future reference.

31MU97

www.lg.com

GUIDES ON USING PRODUCT FUNCTIONS (WINDOWS)

System Requirements

Graphic card			Interface	
			HDMI	(Mini) DisplayPort
4096 x 2160	Intel	Over HD4600	○	○
	AMD	Over HD7800	○	○
	NVIDIA	Over GTX 780	○	○

- In order to set the resolution to 4096 x 2160, you may be required to configure the custom settings from the graphics card control panel or update to the latest graphics card driver.
- Support settings are subject to change.

Precautions for Changing Resolution

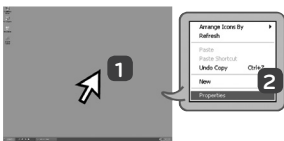
- Failing to set the graphics card to the recommended (optimal) resolution may result in blurred text, a dimmed screen, a truncated display area, or misalignment of the display.
- The configuration procedure may differ depending on your computer and/or operating system. Also, some graphics cards may not support certain resolutions. If this is the case, contact the manufacturer of the computer or graphics card for assistance.
- Some graphics cards may not support 4096 x 2160 resolution. It is recommended to use a graphics card that supports 4096 x 2160 resolution. Even when you set the resolution to 4096 x 2160 on your PC, the actual PC output may not support the resolution.



CAUTION

- The setting method can vary depending on the computer and the O/S. You may not be able to select certain resolutions depending on the graphics card performance. In such cases, please refer to the user's manual of the computer and/or graphics card.

Windows XP



STEP 1

- 1 Move the mouse pointer to an empty area on the Windows screen (with no icons or task bars) and click the right mouse button.
- 2 When the pop-up menu appears, click the **Property**.



STEP 2

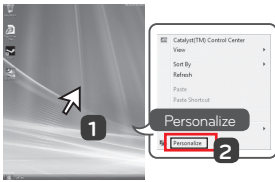
- 3 Choose the **Settings** menu and select an optimal resolution. (4096 x 2160)
- 4 Click the **Apply** button to complete resolution setting.



STEP 3

- 5 Select the **Advanced** button.
- 6 After selecting a monitor screen, select a vertical frequency of 24 Hz or 60 Hz in **Screen refresh rate (S)**.
- 7 Click the **Apply** button to complete optimal frequency setting.

Windows Vista



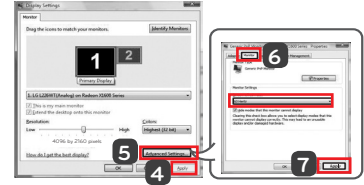
STEP 1

- 1 Move the mouse pointer to an empty area on the Windows screen (with no icons or task bars) and click the right mouse button.
- 2 When the pop-up menu appears, click the **Personalize**.



STEP 2

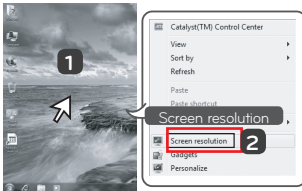
- 3 Choose the **Display Settings** menu and select an optimal resolution. (4096 x 2160)



STEP 3

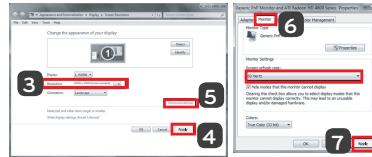
- 4 Click the **Apply** button to complete resolution setting.
- 5 Select the **Advanced** button.
- 6 After selecting a monitor screen, select a vertical frequency of 24 Hz or 60 Hz in **Screen refresh rate (S)**.
- 7 Click the **Apply** button to complete optimal frequency setting.

Windows 7, Windows 8.1



STEP 1

- 1 Move the mouse pointer to an empty area on the Windows screen (with no icons or task bars) and click the right mouse button.
- 2 When the pop-up menu appears, click the **Screen resolution**.



STEP 2

- 3 Choose the **Settings** menu and select an optimal resolution. (4096 x 2160)
- 4 Click the **Apply** button to complete resolution setting.

STEP 3

- 5 Select the **Advanced** button.
- 6 After selecting a monitor screen, select a vertical frequency of 24 Hz or 60 Hz in **Screen refresh rate (S)**.
- 7 Click the **Apply** button to complete optimal frequency setting.

LG Monitor Software Introduction / System Requirements

Software	Installation Priority (required/optional)	Supported Interface		Supported OS			
		(Mini) DisplayPort	HDMI	Win XP	Win Vista	Win 7	Win 8.1
Screen Split	Optional	O	O	O (32 bit)	O (32 bit)	O	O
True Color Pro	Optional	O	X	X	X	O	O
TUSB3410 Driver	Required	O	X	X	X	O	O
Monitor Driver	Optional	O	O	O	O	O	O

- **Screen Split** Automatically splits the monitor screen into the desired layouts.
- **True Color Pro** Calibrates the color output of the monitor using the hardware calibration function. (A separate calibrator is required.)
- **TUSB3410 Driver** This driver file is required for USB communication between the monitor and the PC software.
- The software listed above can be installed using the CD provided with the product or downloaded as the latest version from the LG Electronics website.
- **Graphics card** Use a graphics card that supports 4096 x 2160 resolution.

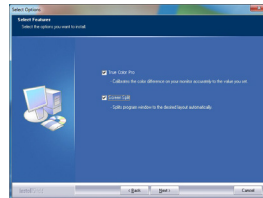
Installing LG Monitor Software

How to Install

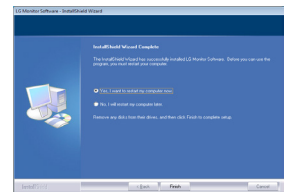
- Installing with the CD provided.
Insert the software CD provided in the product box into the PC's CD drive and install the LG Monitor Software. You can also choose to install Screen Split / True Color Pro.
- Downloading from the LG Electronics website.
Visit the LG Electronics website (www.lg.com) and download the latest software for your model.



On the software CD's main screen, select LG Monitor Software.



In the feature selection step, choose to install programs.



Installation complete.

Monitor Driver

- **Installation priority (required/optional)** Optional
- **Usage** The resolution and frequency are adjusted for the monitor.

How to Install

- Installing with the CD provided.
Insert the user manual CD provided in the product box into the PC's CD drive and install the driver program.
- Downloading from the LG Electronics website.
Visit the LG Electronics website (www.lg.com) and download the latest driver for your model.

Screen Split (MONITOR Screen Split Software)

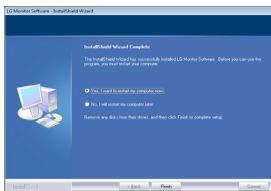
- **Installation priority (required/optional)** Optional
- **Usage** Automatically splits the monitor screen into desired layouts (2 sections, 3 sections, or 4 sections).

How to Install

- Installing with the CD provided.
Insert the software CD provided in the product box into the PC's CD drive and install the LG Monitor Software.
On the Select Options window, select Screen Split and continue.
- Downloading from the LG Electronics website.
Visit the LG Electronics website (www.lg.com) and download the latest software for your model.



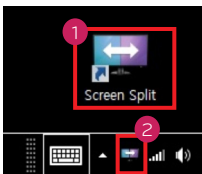
Check **I accept the terms of the agreement** on the License Agreement screen and then click on the **Next** button.



When the installation is complete, restart the system.

How to Run

- 1 Double-click on the shortcut icon on the desktop, or
- 2 Click on the tray icon at the bottom right of the PC screen.



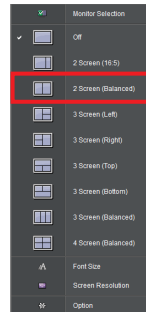
How to Use

- For details on using the software, refer to the program's Help.

- 1 Click on the tray icon at the bottom right of the PC screen.



- 2 Select a screen layout.



- 3 The screen split layout is applied.

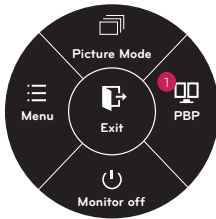


Dual Link-Up (Monitor PBP Function)

- **Usage** The monitor displays screens for 2 input sources simultaneously.
- The Dual Link-Up feature requires that one of the two input sources is connected via HDMI.
- Image shown may differ from the product that you are using.

How to Run

- 1 Connect the monitor to two input sources.
- 2 Press the joystick button on the bottom of the monitor.
- 3 Enter PBP. **1**



- 4 Adjust the settings according to the input sources connected.
- 5 DUAL LINK-UP is applied.

Main screen Sub screen



PBP Connection		Sub screen (Right)		
		HDMI 1	HDMI 2	(Mini) DisplayPort
Main screen (Left)	HDMI 1	-	O	X
	HDMI 2	O	-	X
	(Mini) DisplayPort	O	O	-

- For details on using the software, refer to the product user manual.
- The product user manual is included on the CD provided and is available for download from the LG Electronics website.

True Color Pro (Monitor Color Calibration Software)

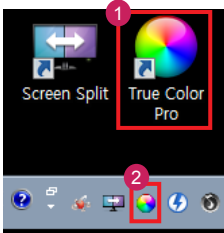
- **Installation priority (required/optional)** Optional
- **Usage** Calibrates the monitor's color output using the hardware calibration function.
- A separate calibrator is required.
- **Applicable calibrators** LG Calibrator, Spyder3, Spyder4, iDisplay Pro, ColorMunki Photo/Design, and iPro2
- True Color Pro may not support PBP mode.
- The software execution images may vary depending on the model.

How to Install

- Installing with the CD provided.
Insert the software CD provided in the product box into the PC's CD drive and install the LG Monitor Software. On the Select Options window, select True Color Pro and continue.
- Downloading from the LG Electronics website.
Visit the LG Electronics website (www.lg.com) and download the latest software for your model.

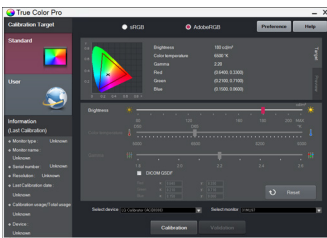
How to Run

- 1 Connect the monitor to the PC using the USB cable.
- 2 Connect the calibrator to the USB IN port of the PC or the monitor.
- 3 Start the True Color Pro program.
 - 1 Double-click on the icon on the desktop.
 - 2 Click on the tray icon at the bottom right of the PC screen → Start the program.

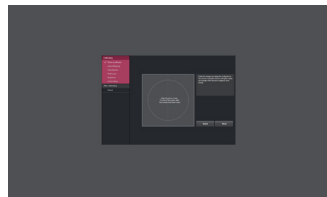


How to Use

- For details on using the software, refer to the program's Help.



True Color Pro launch screen.



Calibration start screen.

GUIDES ON USING PRODUCT FUNCTIONS (MAC)

System Requirements

Product Name		Interface	
		HDMI	(Mini) DisplayPort
4096 x 2160	15-inch MacBook Pro with Retina Display Late 2013 Mac Pro Late 2013	○	○

- In order to use 4096 x 2160, connect the 15-inch MacBook Pro with Retina Display Late 2013 / Mac Pro Late 2013.
- In order to set the resolution to 4096 x 2160, you may be required to configure the custom settings from the graphics card control panel or update to the latest graphics card driver.
- Support settings are subject to change.

Precautions for Changing Resolution

- Failing to set the graphics card to the recommended (optimal) resolution may result in blurred text, a dimmed screen, a truncated display area, or misalignment of the display.
- The configuration procedure may differ depending on your computer and/or operating system. Also, some graphics cards may not support certain resolutions. If this is the case, contact the manufacturer of the computer or graphics card for assistance.
- Some graphics cards may not support 4096 x 2160 resolution. It is recommended to use a graphics card that supports 4096 x 2160 resolution. Even when you set the resolution to 4096 x 2160 on your PC, the actual PC output may not support the resolution.

Mac

Step 1

- 1 On the Doc bar, click on the System Preferences icon.

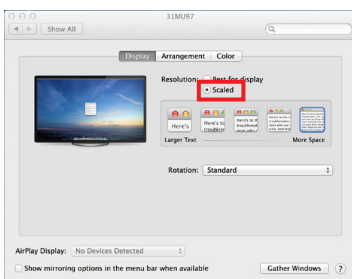


- 2 When the System Preferences window opens, select Display.



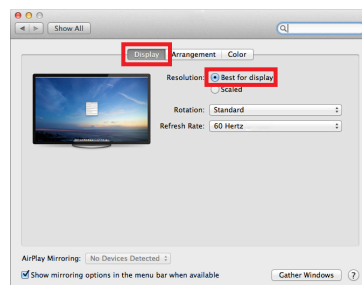
Step 2

- 3 Select the Scaled option and then select a desired resolution, the settings are now configured.



Step 3

- 4 In the Display tab, select Best for display. The display is now set to the recommended resolution (4096 x 2160).



Available Product and OS


Software	Installation Priority (required/optional)	Supported Interface		Supported OS	
		(Mini) DisplayPort	HDMI	Over Mac OS 10.10	Linux
Screen Split	Optional	O	O	O	X
True Color Pro	Optional	O	X	O	X
TUSB3410 Driver	Required	O	X	O	X

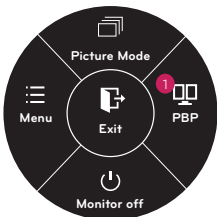
- **Screen Split** Automatically splits the monitor screen into the desired layouts.
- **True Color Pro** Calibrates the color output of the monitor using the hardware calibration function. (A separate calibrator is required.)
- **TUSB3410 Driver** This driver file is required for USB communication between the monitor and the PC software.
- The software listed above can be installed using the CD provided with the product or downloaded as the latest version from the LG Electronics website.
- **Graphics card** Use a graphics card that supports 4096 x 2160 resolution.

Dual Link-Up (Monitor PBP Function)

- **Usage** The monitor displays screens for 2 input sources simultaneously.
- The Dual Link-Up feature requires that one of the two input sources is connected via HDMI.
- Image shown may differ from the product that you are using.

How to Run

- 1 Connect the monitor to two input sources.
- 2 Press the joystick button on the bottom of the monitor.
- 3 Enter PBP. 



- 4 Adjust the settings according to the input sources connected.
- 5 DUAL LINK-UP is applied.

Main screen Sub screen



PBP Connection		Sub screen (Right)		
		HDMI 1	HDMI 2	(Mini) DisplayPort
Main screen (Left)	HDMI 1	-	O	X
	HDMI 2	O	-	X
	(Mini) DisplayPort	O	O	-

- For details on using the software, refer to the product user manual.
- The product user manual is included on the CD provided and is available for download from the LG Electronics website.

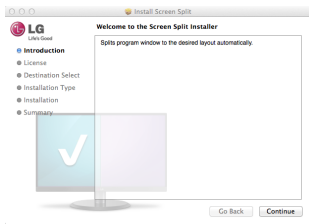
Screen Split (Monitor Screen Split Software)

- **Installation priority (required/optional)** Optional
- **Usage** Automatically splits the monitor screen into desired layouts (2 sections, 3 sections, or 4 sections).

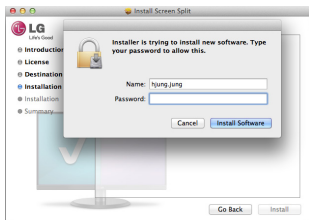
How to Install

- Installing with the CD provided.
Insert the software CD provided in the product box into the PC's CD drive and install the Screen Split.
- Downloading from the LG Electronics website.
Visit the LG Electronics website (www.lg.com) and download the latest software for your model.

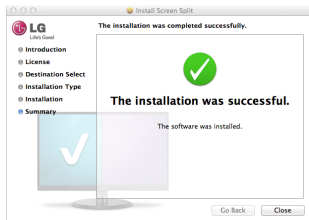
- 1 When the installation program starts, click on **Continue**. During the installation, you have to accept the license agreement.



- 2 Enter the Super User password and click on **Install Software**.

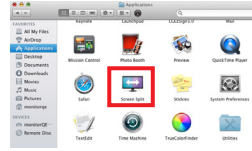


- 3 Click on **Close** to finish the installation.



How to Run

- Finder → Applications → Run Screen Split



- Click on the Screen Split icon on the menu bar.



- Search for **Screen Split** in Spotlight search.



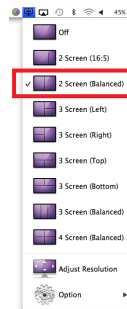
How to Use

- For details on using the software, refer to the program's Help.

- 1 Click on the tray icon at the bottom right of the PC screen.



- 2 Select a screen layout.



- 3 The screen split layout is applied.



True Color Pro (Monitor Color Calibration Software)

- **Installation priority (required/optional)** Optional
- **Usage** Calibrates the monitor's color output using the hardware calibration function.
- A separate calibrator is required.
- **Applicable calibrators** LG Calibrator, Spyder3, Spyder4, i1Display Pro, and ColorMunki Photo/Design, iPro2
- True Color Pro may not support PBP mode.
- The software execution images may vary depending on the model.
- It is recommended to perform calibration after disabling the dual monitor function.

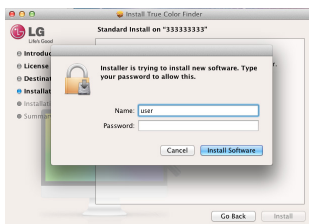
How to Install

- Installing with the CD provided.
Insert the software CD provided in the product box into the PC's CD drive and install the True Color Pro.
- Downloading from the LG Electronics website.
Visit the LG Electronics website (www.lg.com) and download the latest software for your model.

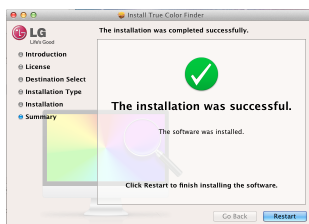
- 1 When the installation program starts, click on **Continue**. During the installation, you have to accept the license agreement.



- 2 Enter the Super User password and click on **Install Software**.



- 3 Click on **Restart** to finish the installation.



How to Run

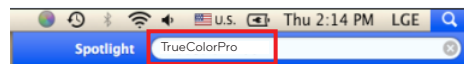
- 1 Connect the monitor to the PC using the USB cable.
- 2 Connect the calibrator to the USB IN port of the PC or the monitor.
- 3 Start the True Color Pro program.
Finder → Applications → Run True Color Pro



- Click on the True Color Pro icon on the menu bar and click on **Start Program**.

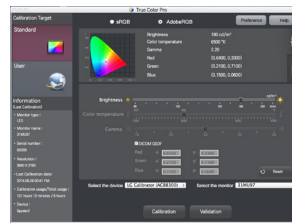


- Search for **True Color Pro** in Spotlight search.

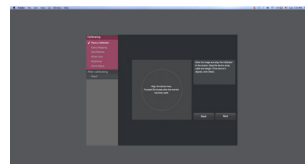


How to Use

- For details on using the software, refer to the program's Help.



True Color Pro launch screen.



Calibration start screen.

