

S-0512-DT

Compact Stylish Mini-ITX Enclosure with 120W PSU



■ INTRODUCTION

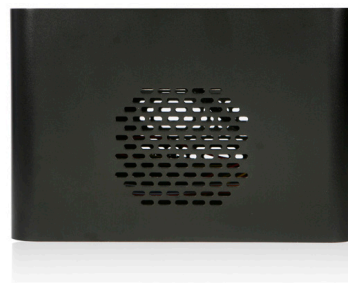
The S-0512-DT is designed to house high performing systems at a much reduced size. This model is featured with a built-in 120W power board and 12V/5A power adapter. Porous cover and a 5.25" standard optical drive bay makes this case a workstation's new friend.

■ FEATURE

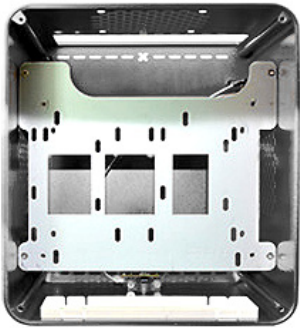
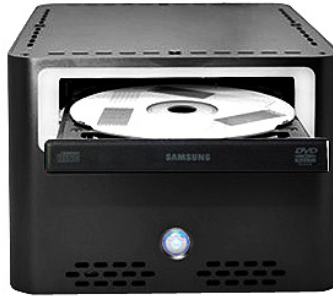
- Built-in 120W DC power board with 12V/5A power adapter
- Sleek front panel with power on button
- Power Connectors: 20+4 pin, Floppy x1, SATA,x1, Molex x2, 4pin 12V x1

■ SPECIFICATIONS

Model Number	S-0512-DT
RoHS Compliance Version	Yes
Standard Drive Bays	3.5" Drive (internal): 1 5.25" Drives: 1
Switches	Power
Material of Front Bezel	Plastic
Material of Main Chassis	SGEE 3.5mm
Color of Front Bezel	Black
Color of Main Chassis	Black
Motherboard Size	6.7 x 6.7 (mini-ITX)
Optional Fan	80x80x10mm x1
Ordering Information (Part Number)	with 60W (12V/5A) power adapter: S-0512-DT with 120W (12V/10A) power adapter: S-0512-DT-120
Dimensions (WxHxD)	7.90" x 5.90" x 8.90" 200.7 mm x 149.9 mm x 226.1 mm
Notes	5.25" drive bay only fits optical device

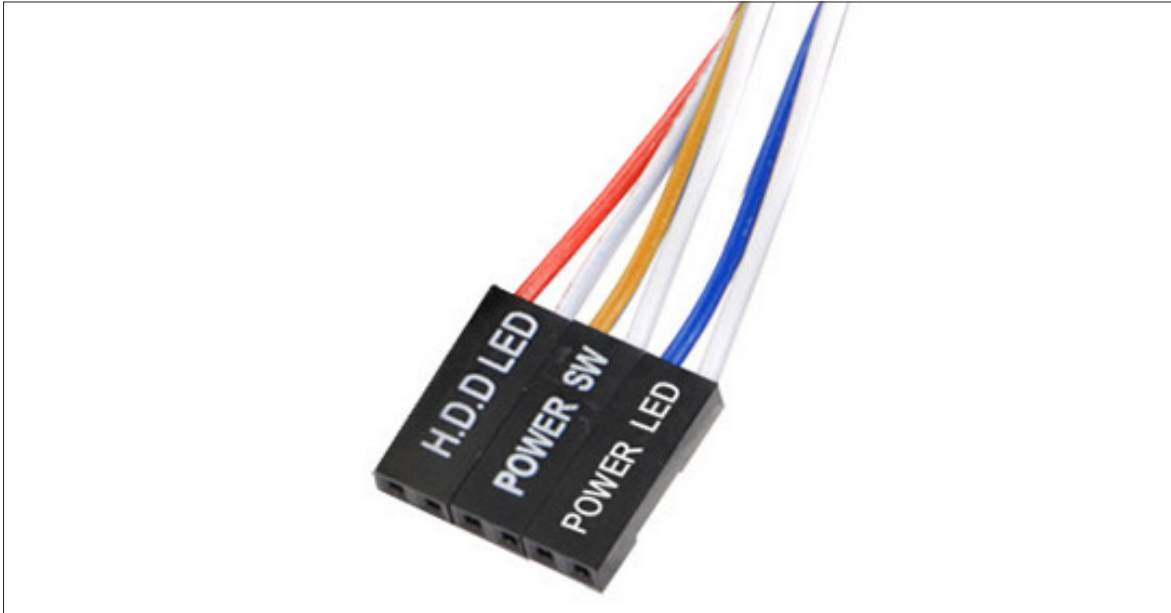


S-0512-DT



S-0512-DT

■ POWER CONNECTORS



Power supply switch lamp cord



20+4 PIN



4 PIN



SATA Port



CPU 4 PIN



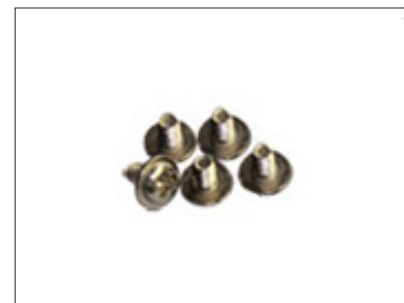
4 PIN (Female Pin)

S-0512-DT

■ ACCESSORIES



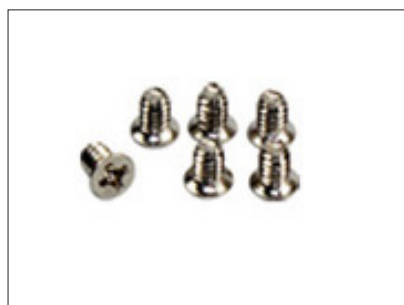
Workbin



For PC CD-ROM
For standy HDD & lid



For mainboard



For standard hard drive



For circular PAWS (horizontal)



For 8cm fan



For PC HDD



For fans