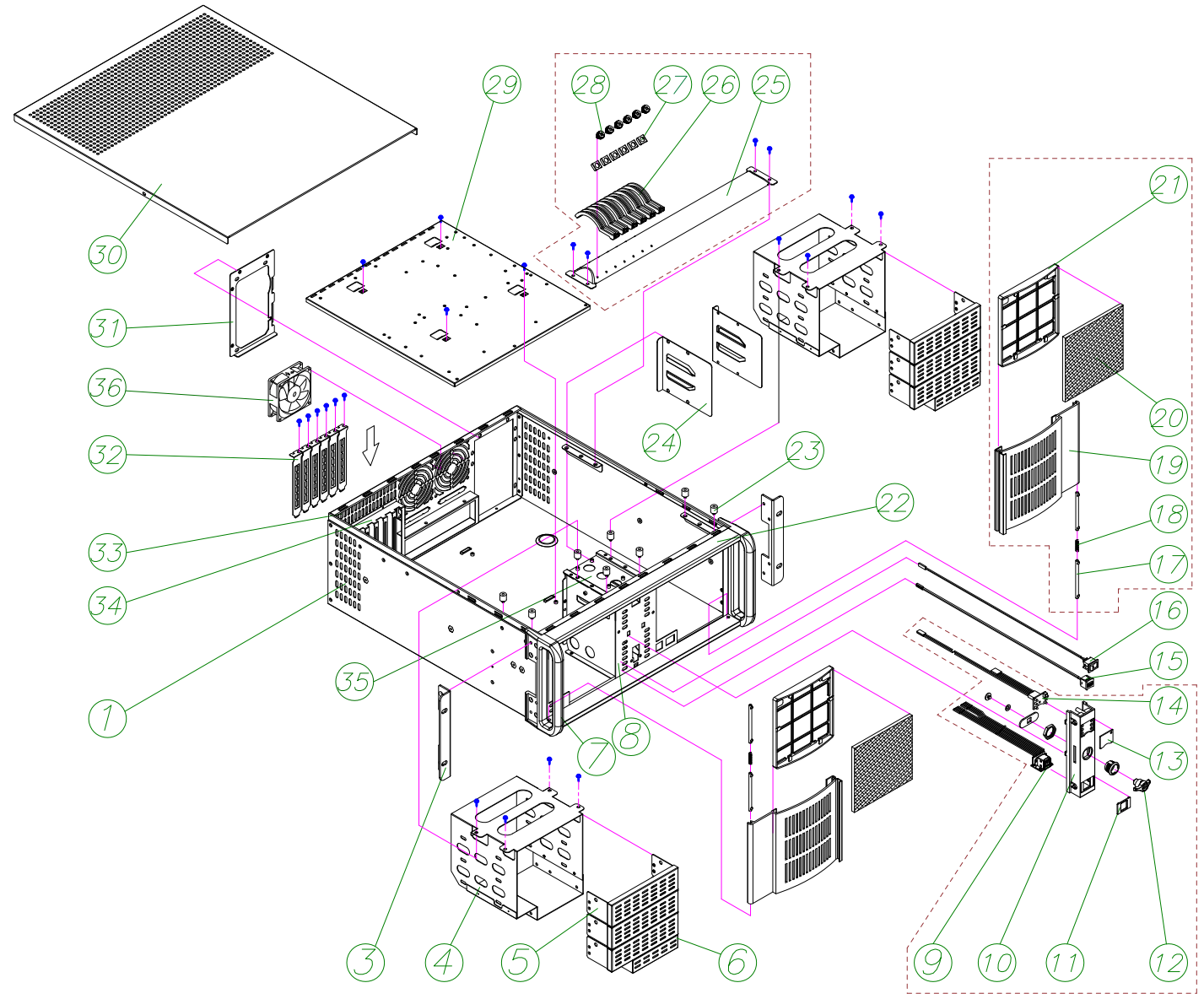


# D-400-6

Inventory Type	Item No.
A	08;22;23;29;30;36;39;41;42
B	03;07;09;14;15;16;38
C	10;11;12;13
D	01;05;06;17;18;20;24;25;26;27;28;31;32;35;37;40



	NO	PARTS NO	DESCRIPTION
	01	DD-400-FRAME	Main Chassis
	02		
DD-3B1S-CAGE 37	03	DD-400-EAR-L	Side Holder(*2)
	04		Disk Holder
	05	DD-525CVR	5.25" Cover Panel (*6)
	06	DD-35CVR	3.5" Cover Panel (*2)
DD-CTRLKSET-4U 38	07	DD-400-HANDLE	Aluminum Alloy Handle(*2)
	08	DD-406-FPANEL	Front Panel
	09	DD-USBHEAD	USB Connector
	10	DD-LOCKHLD-4U	Lock Holder
DD-400-DBLACK 39	11	DD-USB-ACRYL	USB Acrylic
	12	DD-KEYLOCK	Key Lock
	13	DD-LED6-ACRYL	LED Acrylic
	14	DD-LED	LED Lndicator (*6)
DD-400-FILTER 40	15	DD-RESET	Reset Switch
	16	DD-PWSWITCH	Power Switch
	17	DD-SPINDLE-4U	Door Spindle (*4)
	18	DD-SPRING-4U	Spring(*2)
DD-400-7PCIBAR 41	19		Aluminum Alloy Door(*2)
	20	DD-FILTER-4U	Air Filter (*2)
	21		Filter Holder (*2)
	22	DD-FRONTBAR	Decoration Bar(*2)
DD-400-BP-STD 42	23	DD-STEELSTDF	Drive Cage Standoffs
	24	DD-35BRT	H.D.D Holder (*2)
	25	DD-PCIBAR	Hdd-down Card Clamp Support
	26	DD-PCIBATTEN	Long Card Batten (*6)
	27	DD-PCISLICE	Steady Slice (*6)
	28	DD-PCISCREW	Manual Screw (*6)
	29	DD-EATX-MB-34U	M/B Mounting Plate
	30	DD-VENTLID-34U	Top Cover
	31	BRT-D4UATX-C	Power Bear Board
	32	DD-SLOTCVR-SD	Slot Cover (*6)
	33		Back Panel
	34		Back Window
	35	DD-CTRFRAME-6	Central HDD Frame
	36	DD-FAN80S	80mm Fan 3pin
	37		
	38		
	39		
	40		