



NSA325 v2

Support Notes

Version 1.00
Aug, 2013



Share and Learn. Join ZyXEL Forum Now !

<http://forum.zyxel.com>

<http://forum.zyxel.com>

Contents

Chapter 1 Applications.....	4
1. NAS Starter Utility.....	4
1.1 NAS Starter Utility Installation.....	4
1.2 NSA325 v2 Initialization.....	5
1.3 Network setting.....	7
1.4 zPilot.....	7
1.5 Directory.....	8
1.6 Device Management.....	9
1.7 Media Player.....	10
2. Auto Upload Service.....	13
2.1 Auto-upload pictures to Flickr.....	13
3. Package Management.....	19
3.1 Gallery.....	20
4. Dropbox.....	23
4.1 zDownload.....	26
5. SmartPhone.....	27
5.1 File Browser.....	28
6. Network IPv6.....	29
7. Access NSA325 v2 via samba on Linux.....	30
8. Log in NSA325 v2 via ftp on Linux.....	32
8.1 log in NSA325 v2 via anonymous ftp on Linux.....	32
8.2 Access NSA325 v2 with user name via ftp.....	33
9. Log in NSA325 v2 via telnet on Linux.....	36
10. Access NSA325 v2 via NFS.....	38
Chapter 2 FAQ.....	44
1. What is RAID?	44
2. What kind of RAID is supported in NSA325 v2?	44
3. What is the file system supported in NSA325 v2?	44
4. Which kind of the media server does NSA325 v2 apply?	44
5. Does NSA325 v2 support DLNA media server?	44

6. What is the feature "Wake On LAN"?	44
7. Which kind of video file formats are supported by NSA325 v2?	45
8. Which kind of audio file formats are supported by NSA325 v2?	45
9. Which kind of image file formats are supported by NSA325 v2?	45
10. Which kind of web browsers are supported by NSA325 v2?	45

Chapter 1 – Applications

1

1. NAS Starter Utility

1.1 NAS Starter Utility Installation

After you install a new hard drive on the NSA325 v2, please make sure to use the NAS Starter Utility to discover and access the NSA325 v2 to assign an IP address by the DHCP server or a static option. The steps are as below.

- a. Double-click setup.exe. **NSU_2.10_build_1057**
- b. Click “Next” to begin the installation.

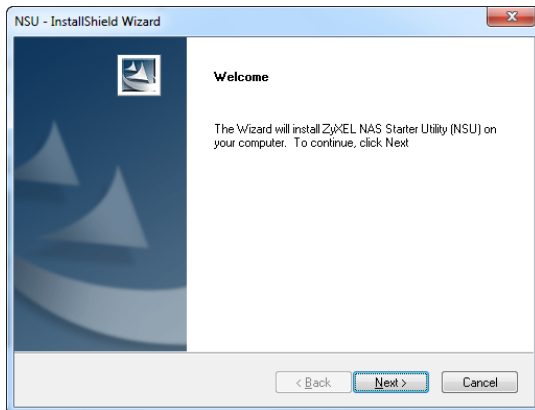


Figure 1. Click “Next”.

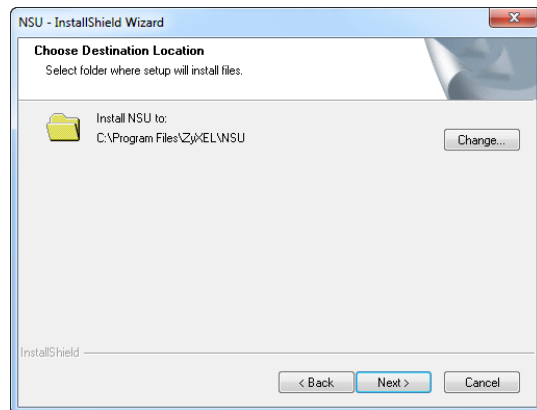


Figure 2. Select a folder to install the utility.

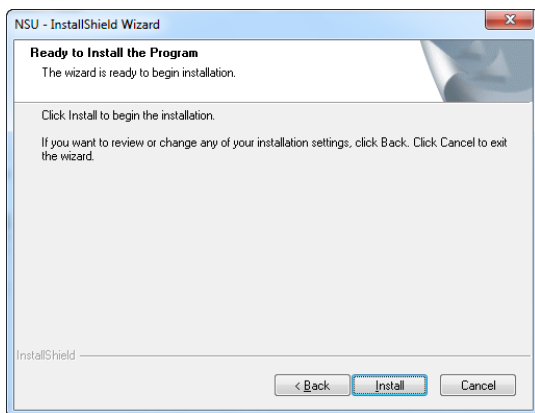


Figure 3. Click “Install”.

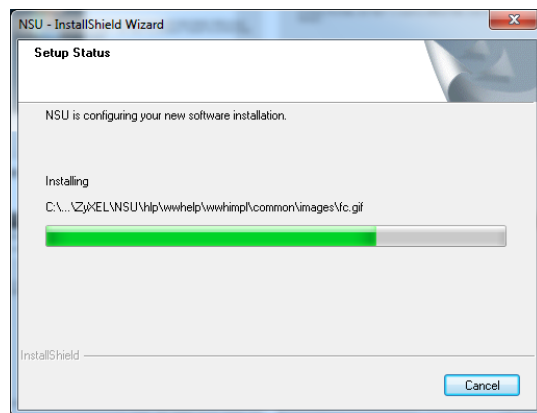


Figure 4. NSU Installation is processing.

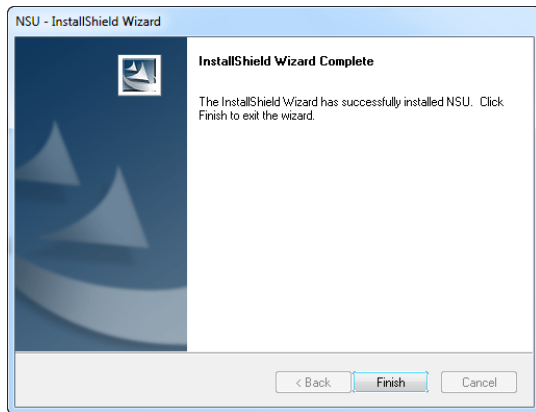


Figure 5. Installation is finished.

1.2 NSA325 v2 Initialization

After a successful installation, click on the “NAS Starter Utility”. The first screen of the NSU will try to discover the NSA devices. Click on “NAS Seeker”, and then choose the devices that you want to connect.

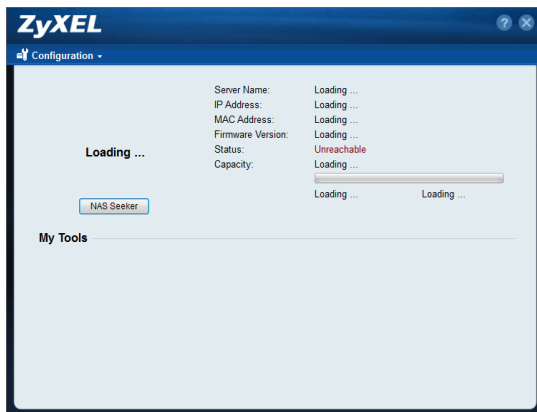


Figure 6. NAS Discovery.



Figure 7. NAS Seeker.

Then click **Run the Initialization Wizard** to setup the NSA325 v2, and enter the username and password to start the initialization. The default username is **admin** and the password is **1234**. These two words are case sensitive.



Figure 8. Run Initialization.

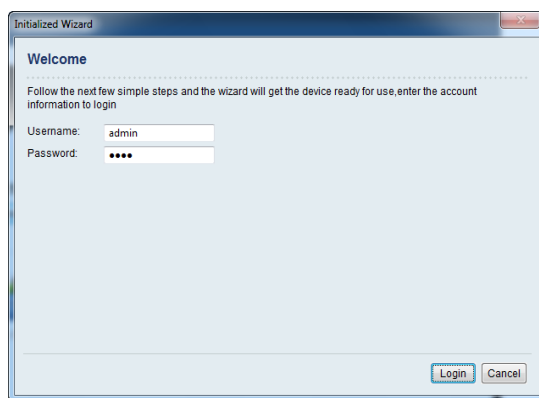


Figure 9. Enter username and password.

Choose **Default Configuration** or **Manual Configuration** and then click **Next**. Here, we recommend that users use **Default Configuration**. For security purposes, we suggest the users change the admin's password.



Figure 10. Choose a wizard type.

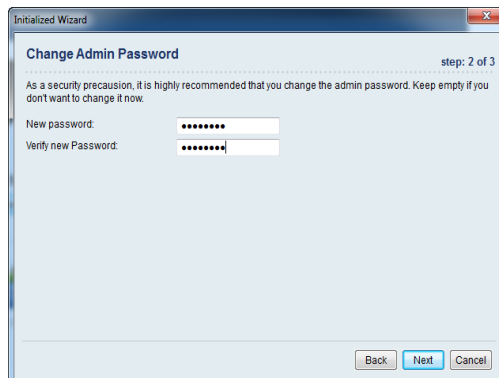


Figure 11. Change the password.

Check if the settings are correct and click **Next** to begin configuring the NSA325 v2.

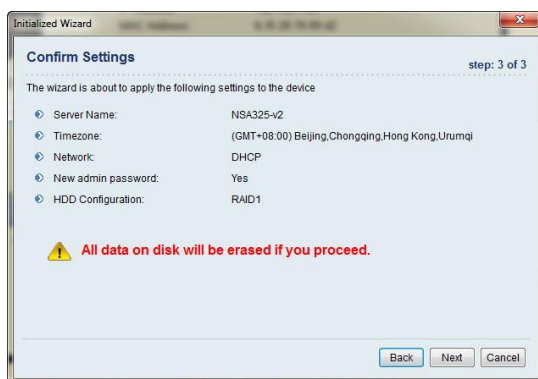


Figure 12. Confirm settings.

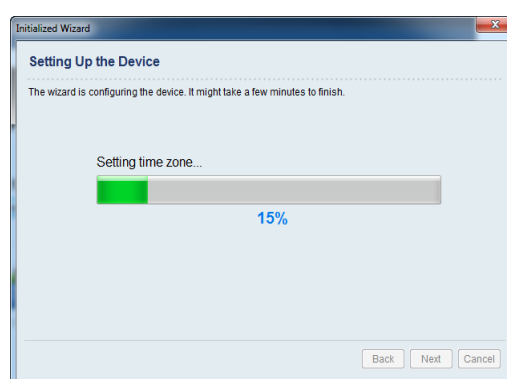


Figure 13. NAS is under setting.

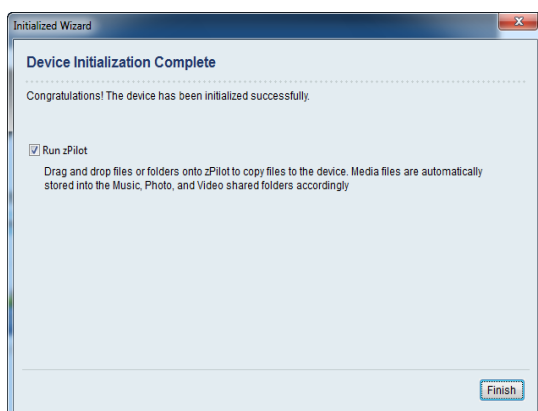


Figure 13. Configuration is finished.

1.3 Network Setting

After successful initialization, go back to the NSU main menu and click **Configuration > System Setting** to start configuring. You can assign a new hostname for this NSA325 v2, set the TimeZone and PPPoE connection information as well as an IP address for the NSA325 v2.

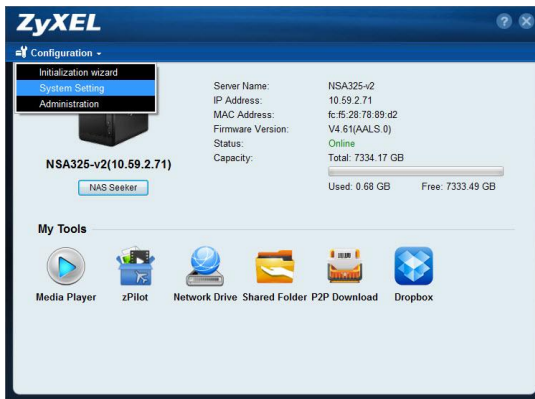


Figure 14. NSU main menu.

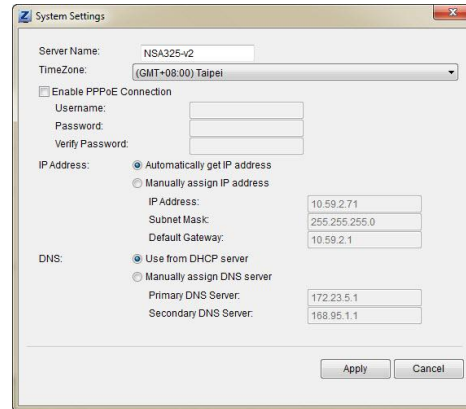


Figure 15. Configure an IP address for NSA325 v2.

1.4 zPilot

Click **zPilot** to launch zPilot. When you would like to upload files to NSA325 v2, just drag the files onto the zPilot icon. The files will be automatically uploaded and sorted based on their types: Music, Photos and Videos. The files which are not categorized in Music, Photos or Videos will be uploaded to the Public folder.



Figure 16. NSU main menu.



Figure 17. Enter the username and password to login.



Figure 18. zPilot icon

When users double-click on the zPilot icon, the detail status of zPilot will be shown as follows. Click **Clean Completed** to clear the finished tasks.

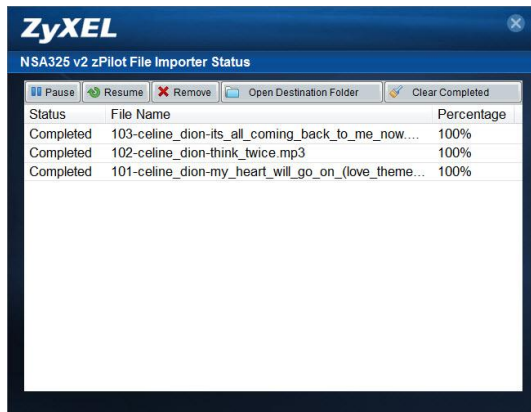


Figure 19. The zPilot is transferring files to NSA325 v2.

1.5 Directory

Click **Network Drive** and enter your username and password. Then the directory of NSA325 v2 will appear. You will see the files that you uploaded through zPilot automatically categorized by their types.



Figure 20. NSU main menu.



Figure 21. Enter the username and password to login.

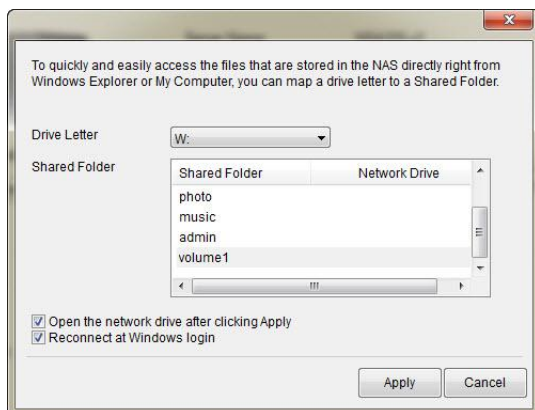


Figure 22. Select the NAS folder for directly on the PC

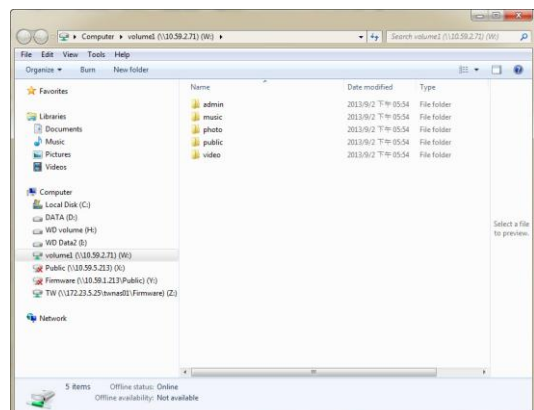


Figure 23. Directory of NSA325 v2.

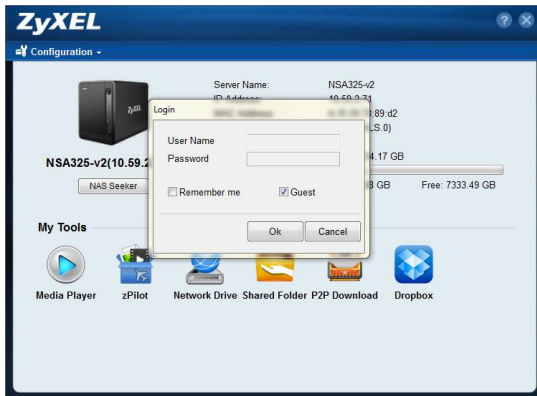


Figure 24. Use Guest to login.

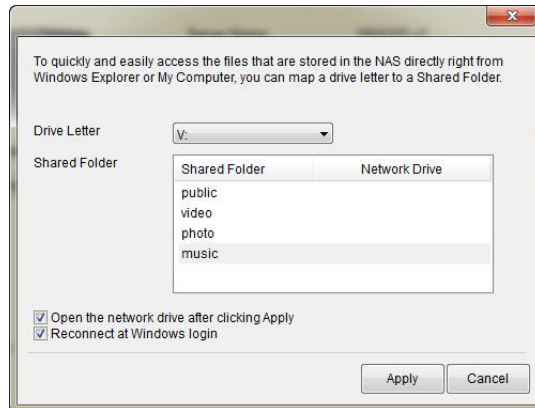


Figure 25. You are able to select that NSA has shared public folder for directly on the PC.

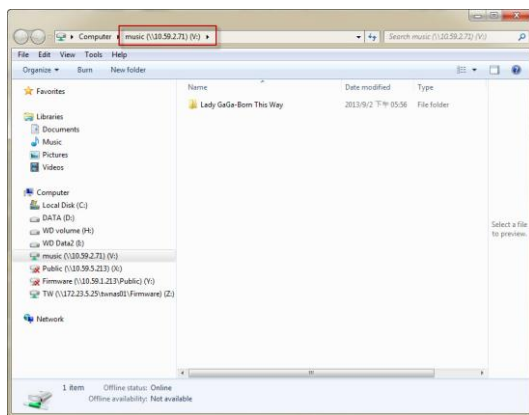


Figure 26. Directory of NSA325 v2.

1.6 Device Management

Click **Configuration > Administrator** and enter the admin's username and password to access the NSA325 v2's GUI. Then the administrator can manage the device and change the configurations.



Figure 27. NSU main menu.

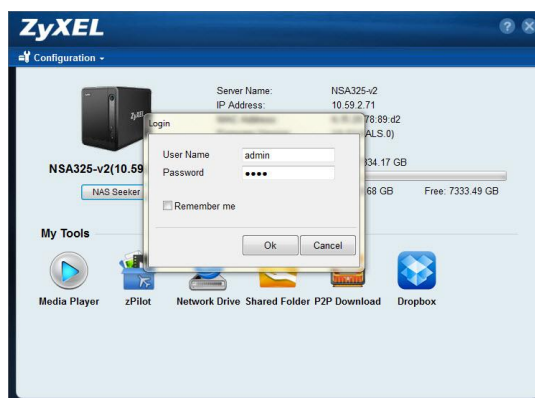


Figure 28. Enter admin's username and password to login to the GUI.

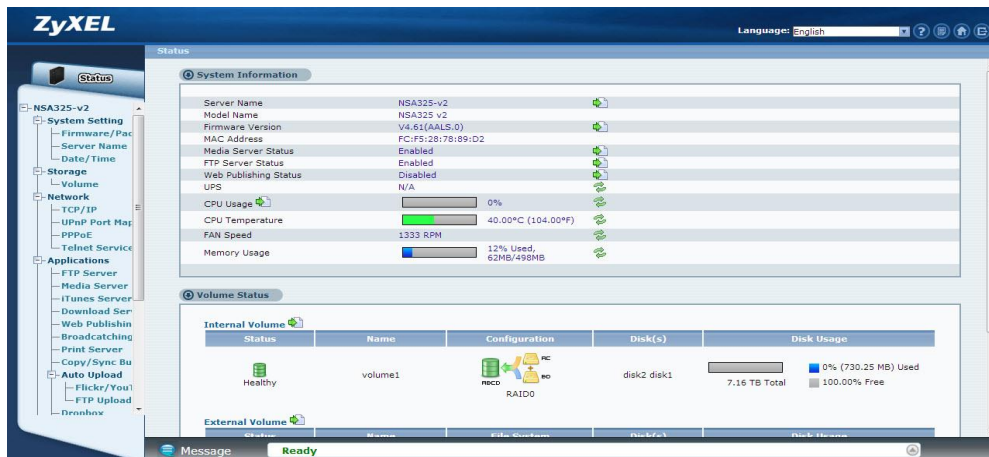


Figure 29. NSA325 v2's GUI

1.7 Media Player

Click **Media Player** to enjoy the music, videos, and photos through the web browser.



Figure 30. NSU main menu.



Figure 31. Enter the username and password. The username can be admin or other regular users.

The Home screen displays. You can click on the icon to listen to the music, watch the movies, or enjoy the photos stored in the NSA325 v2.

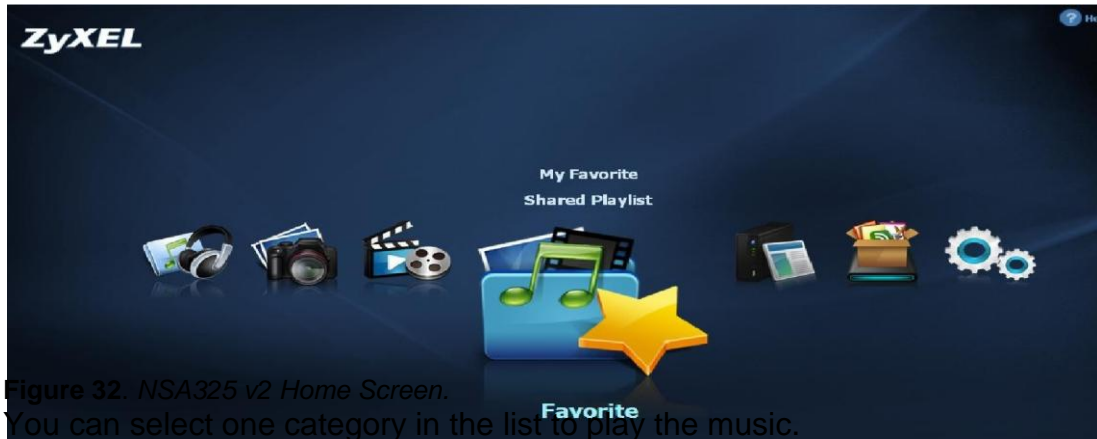


Figure 32. NSA325 v2 Home Screen. You can select one category in the list to play the music.

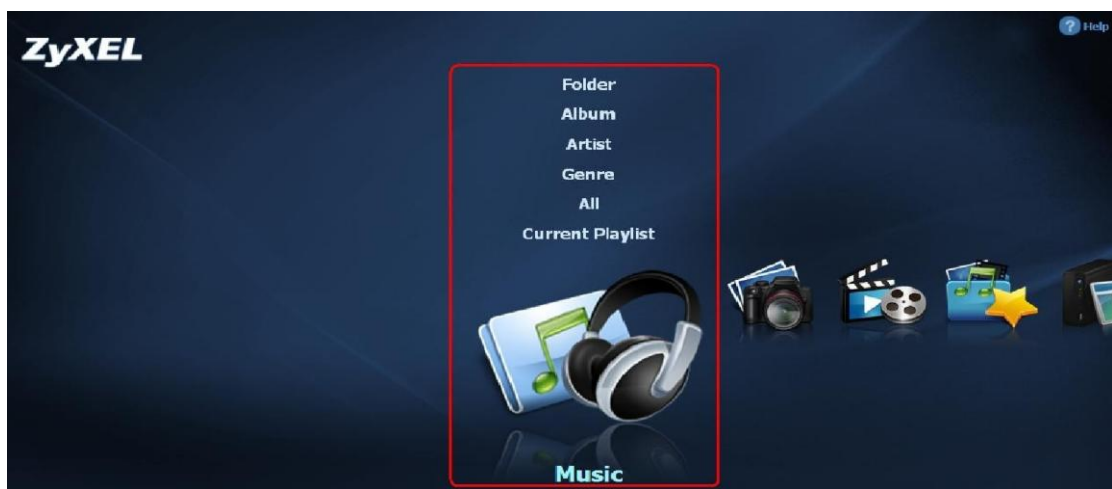


Figure 33. Play the music by selecting the category.

Just click on the song to start playing the music.

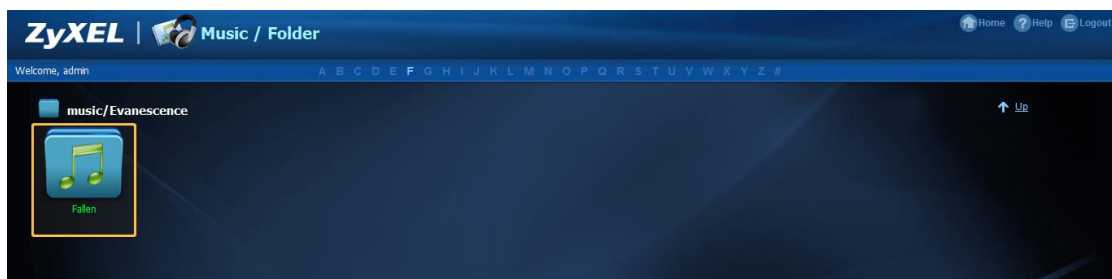


Figure 34. Music folder.



Figure 35. *Music files.*

If you find that the media files are not displayed correctly, please check the status in **Applications > Media Server**. Usually, you will see the photos displayed.

2. Auto-upload Service

ZyXEL NSA325 v2 allows users to automatically upload their pictures to the Flickr website (<http://www.Flickr.com>) and video files to the YouTube website (<http://www.youtube.com>). Additionally, automatic FTP uploading is supported in the NSA325 v2. To use this feature, you need to download the same package as the NSA210's.

2.1 Auto-upload Pictures to Flickr

To share pictures on the Flickr website (http://www.Flickr.com), the NSA325 v2 supports automatic uploading of pictures from a given folder of the NSA325 v2.

Configuration Procedure:

- Enable auto-upload in Flickr service.
- Configure the account Flickr account information.
- Link your NSA325 v2 with your Flickr account.
- Specify the folders which you want NSA325 v2 to automatically upload your pictures.
- Specify the grace period and other options in the auto-upload function.
- Move pictures to the folders you specified in the previous step.
- Check the result in the Flickr website.
- Check the system log in the NSA325 v2.

First, log into the web GUI page in NSA325 v2, go to **Auto Upload > Flickr/YouTube**. Then, enable Flickr service as shown below. After enabling the Flickr service, you will see two more icons on the same page.

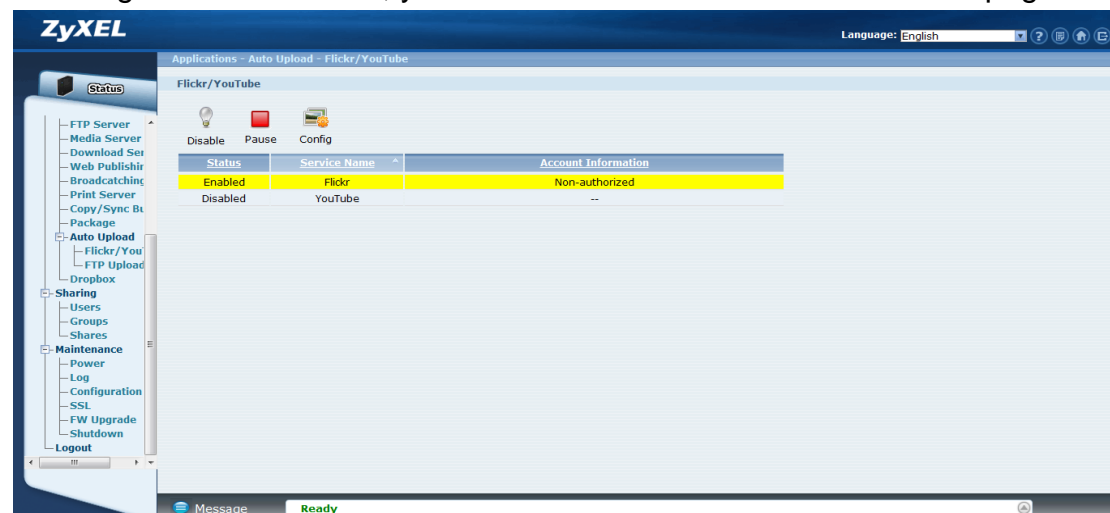


Figure 36. Enable Flickr service.

Click on the “config” icon to set a more detailed configuration. There will be several system Notifications to warn you that you are going to link to the Flickr website. Meanwhile, please make sure that you have the Flickr account information.

After configuring the account information, the system will inform you about the connection to Flickr.

In the following pop-up browser, you need to authorize the connection between your account and your NSA325 v2.

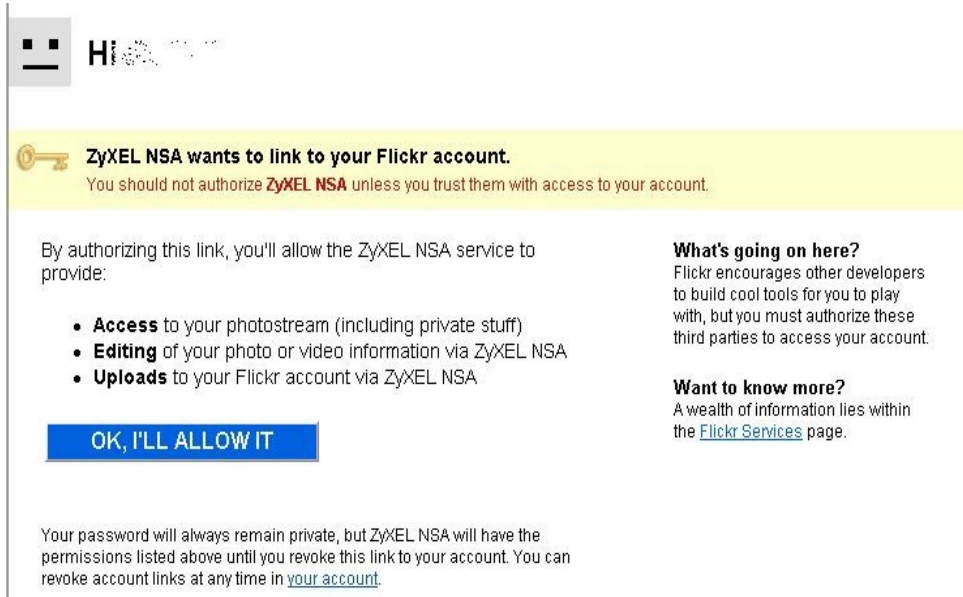


Figure 37. Authorization between your account and NSA325 v2.

The following figure shows that you can agree to this link after clicking on “OK” button.

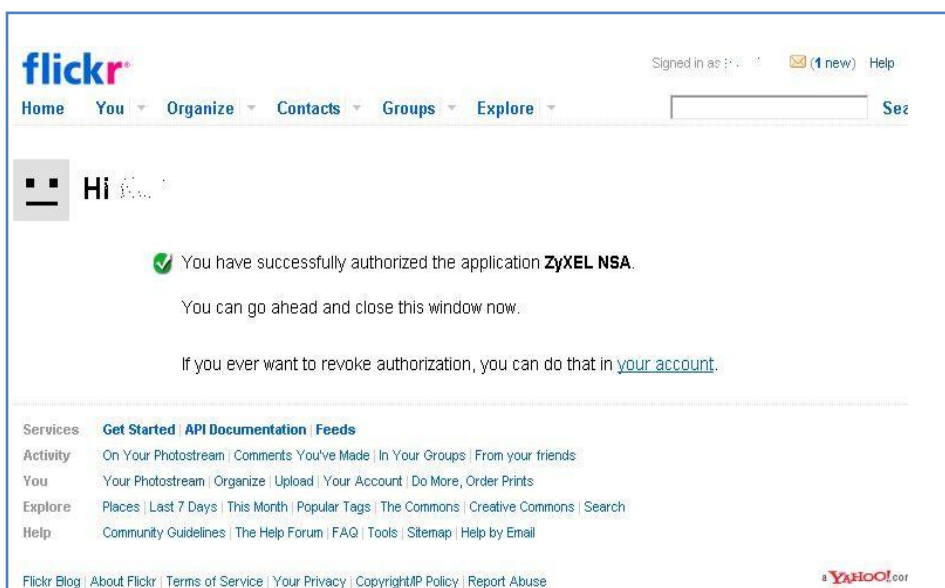


Figure 38. Successful authorization.

After allowing the agreement in the Flickr page, please also click on the “Get ready” button in the NSA325 v2.

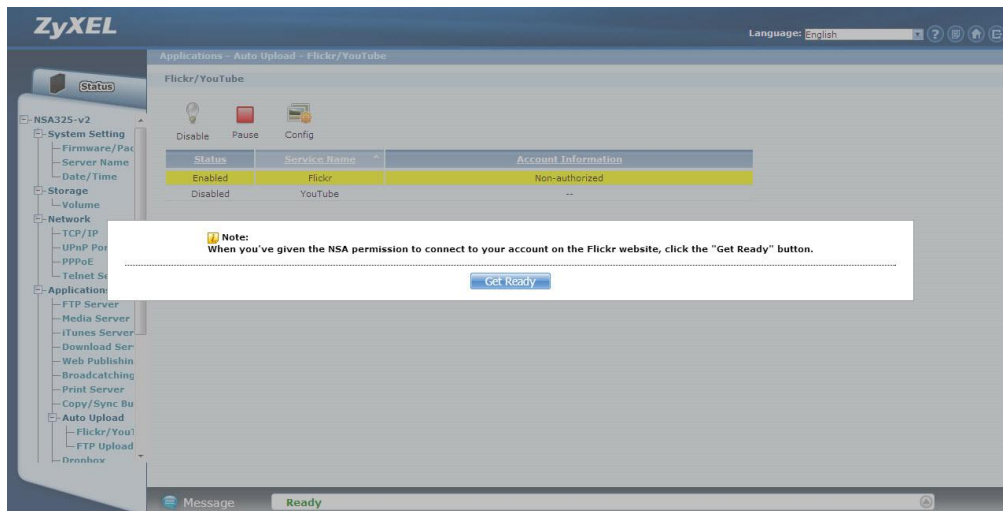


Figure 39. Click on “Get Ready”.

You can check the service status in the NSA325 v2 under **Auto Upload > Flickr/YouTube**.

In this case, we can see the storage status in your Flickr account.

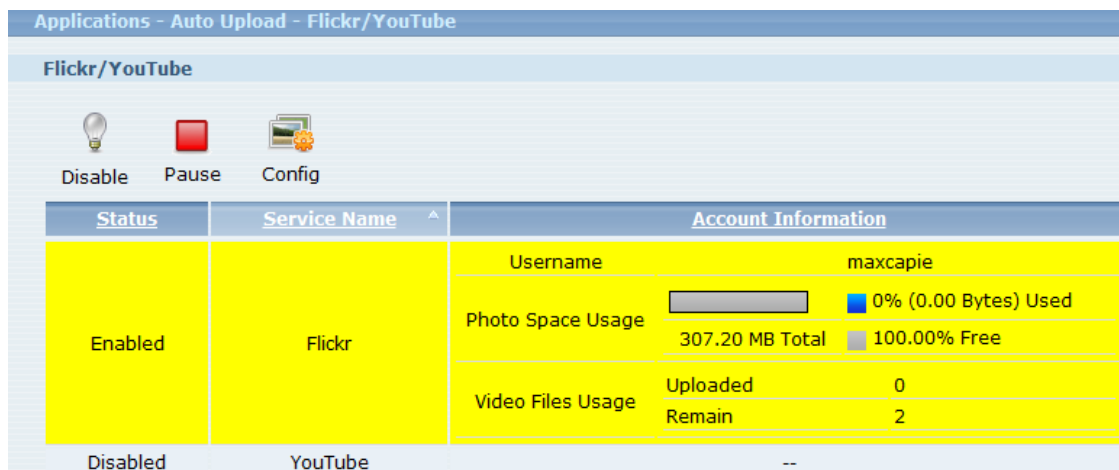


Figure 40. Monitor the service status.

Afterwards, users need to set which folder(s) of the NSA325 v2 will be monitored and uploaded to the Flickr website. In this example, we are going to set the folder named as “” under the public folder to be monitored and upload all the pictures to the Flickr website.

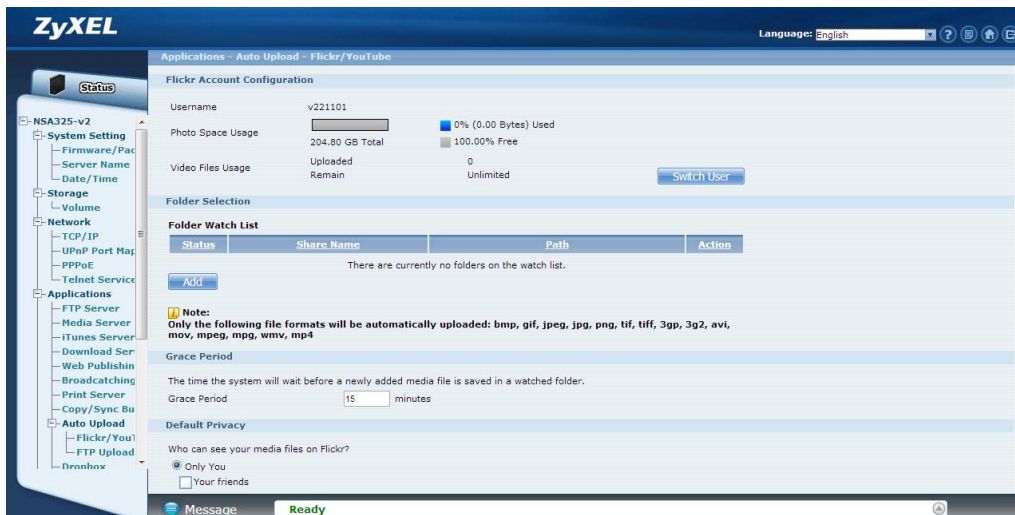


Figure 41. Configure “Grace Period” in the GUI.

In this example, we have configured the grace period as two minutes. This means that the NSA325 v2 will upload any newly added pictures from the folder that you specified after 15 minutes from when you clicked on the “Apply” button.

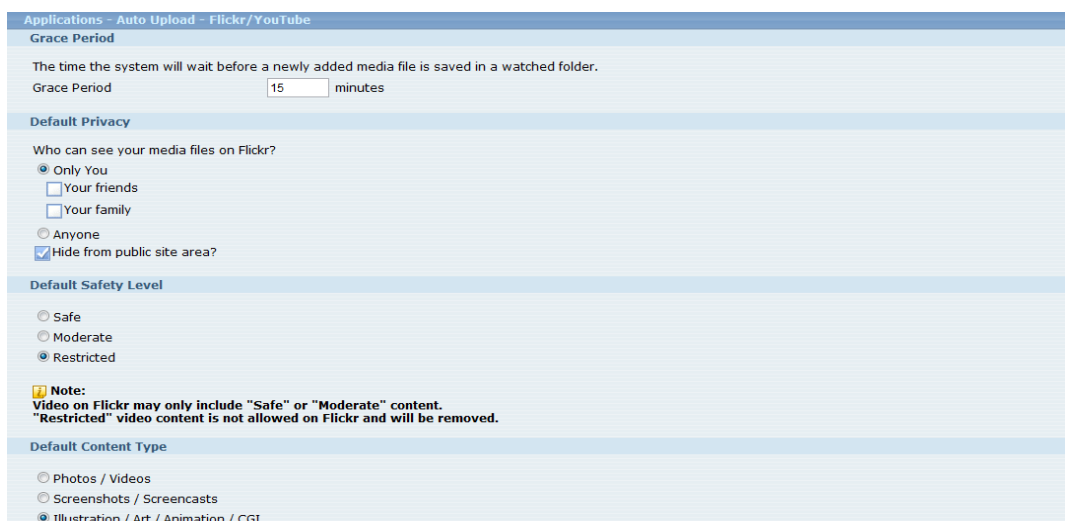


Figure 42. Configure “Grace Period” in the GUI.

Please specify the given folder that the NSA325 v2 will monitor and upload the pictures after applying the configuration.

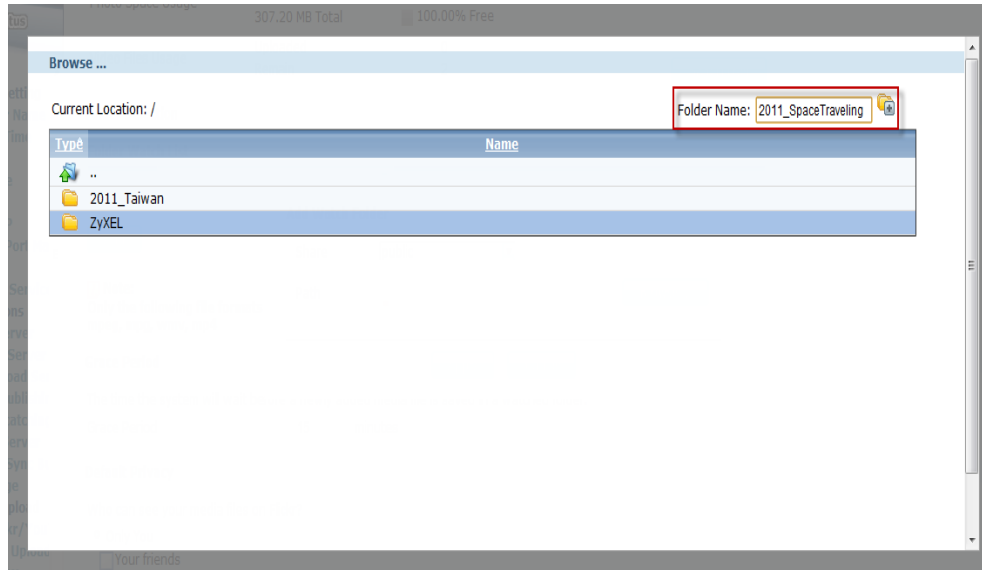


Figure 43. Specify the folder.

Please remember to click on the “Apply” button after specifying the given folder. The NSA325 v2 will monitor any need added pictures in the folder you assigned after you have clicked on the “Apply” button.

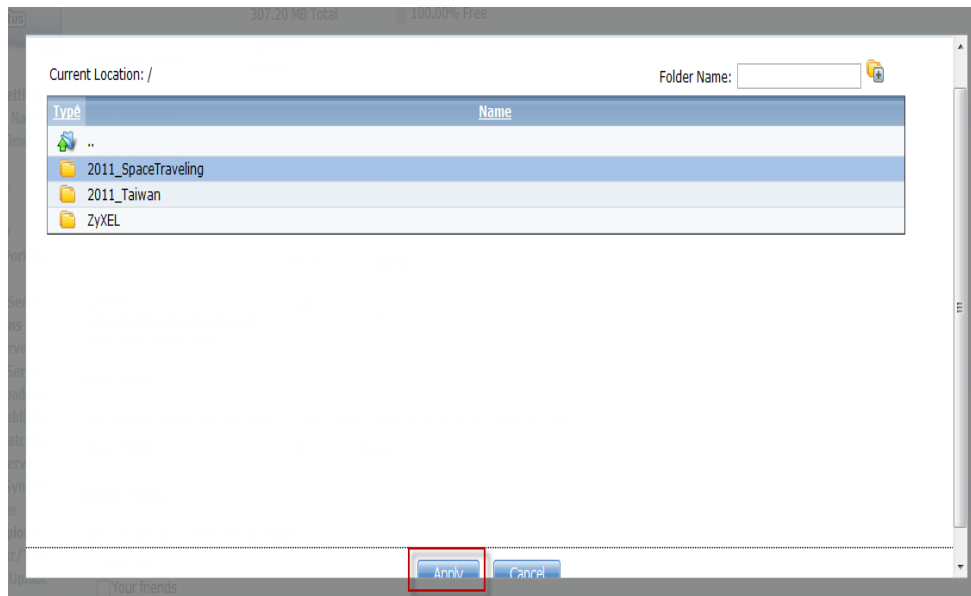


Figure 44. Click on “Apply” after specifying the folder.

After 15 minutes, the NSA325 v2 will upload the newly added photos to the Flickr website. In this example, we can see that one picture has been uploaded.

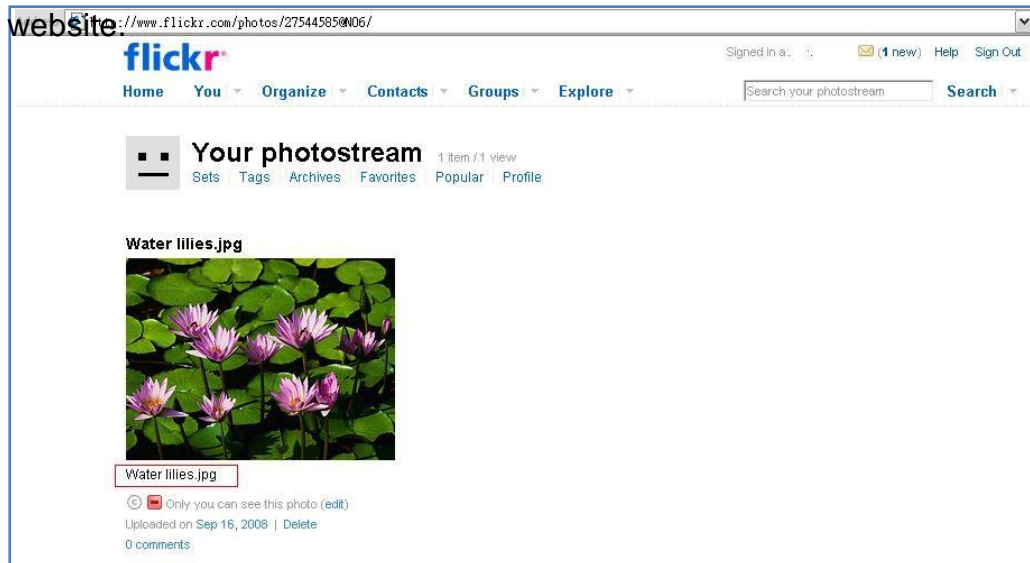


Figure 45. Uploaded photo.

3. Package Management

Package management is used to set up more useful applications in the NSA325 v2. This feature enables users to use the following applications: BackupPlanner, DyDNS, Gallery, NFS, PHP-MySQL-phpMyAdmin, SMART, SqueezeCenter, Wordpress and eMule.

Click **System Setting > Firmware/Packages** to display the screen. Then the applications are will be listed as shown below.

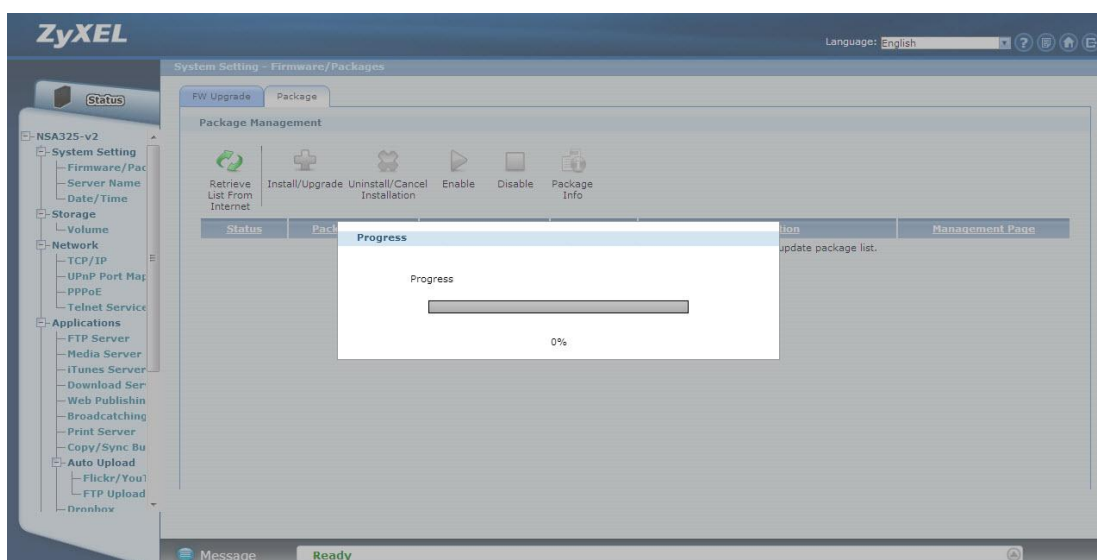


Figure 46.



Figure 47. System setting - Firmware/Packages

After you have finished installing an application and enabling it, additional links are displayed in the navigation panel. For example, you can see BackupPlanner, Gallery, PHP-MySQL.

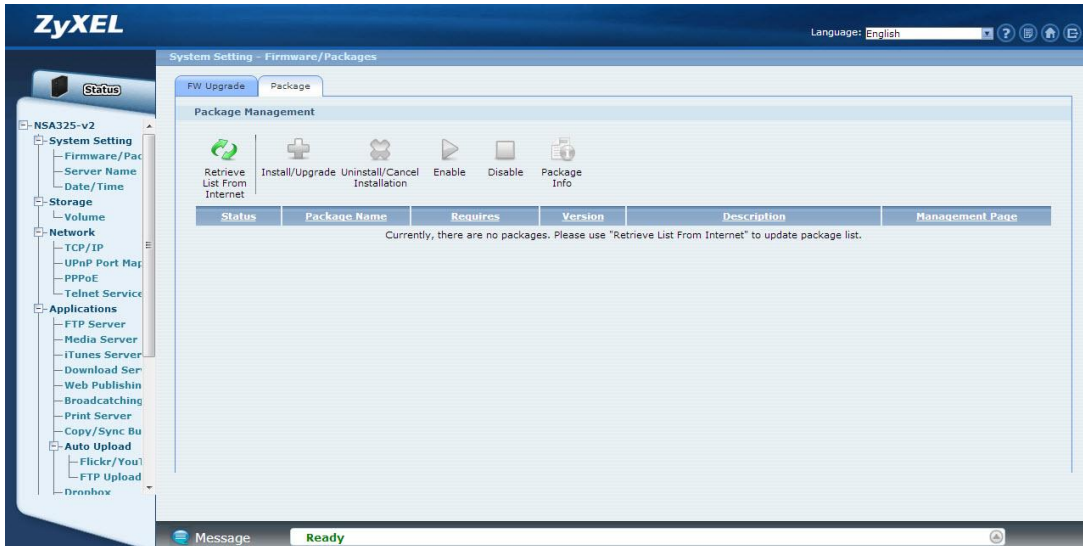


Figure 48. Original navigation panel before applications installed.

For Gallery, PHP-MySQL-phpMyAdmin, SqueezeCenter and Wordpress, you can access the applications' web configurators through the Package Management screen or by specifying the IP address shown in the GUI in your web browser.

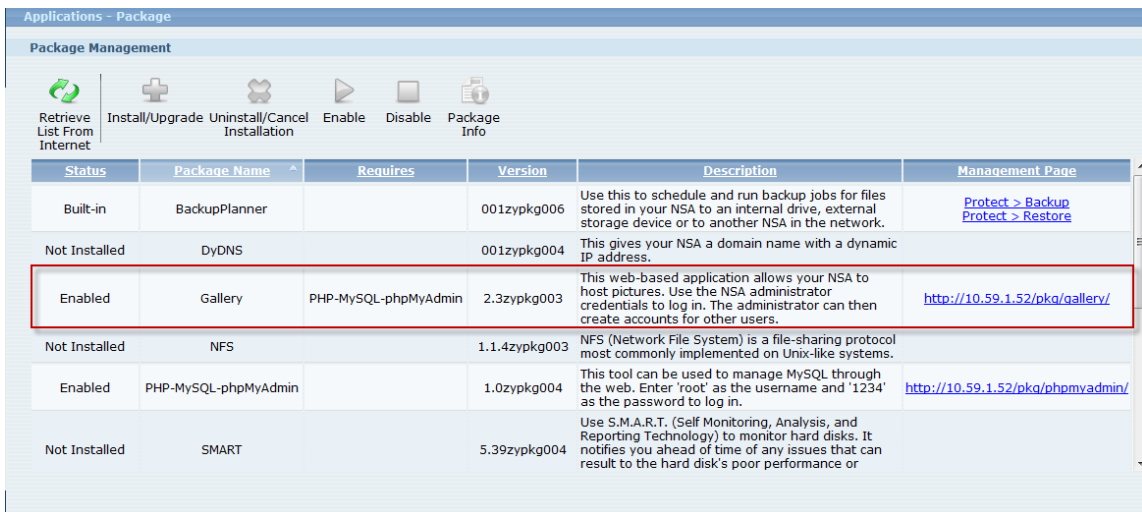


Figure 49. Applications' link.

3.1 Gallery

Gallery is a web-based application that allows the NSA325 v2 to host photos. You can upload photos from the local computers or stored in the NSA325 v2. Use the administrator account of the NSA325 v2 to log in to the Gallery GUI.

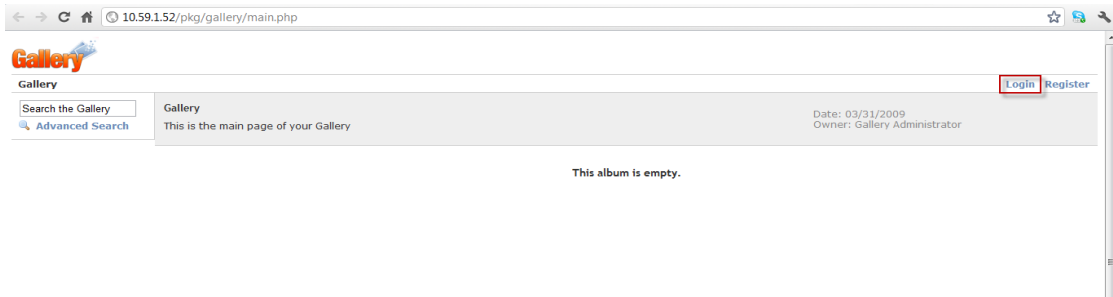


Figure 50. Enter Gallery GUI.

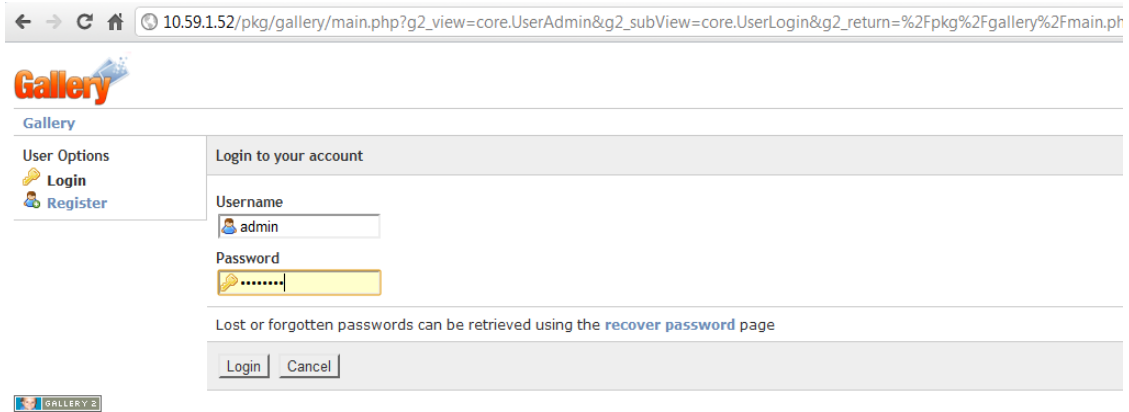


Figure 51. Use Admin account to login.

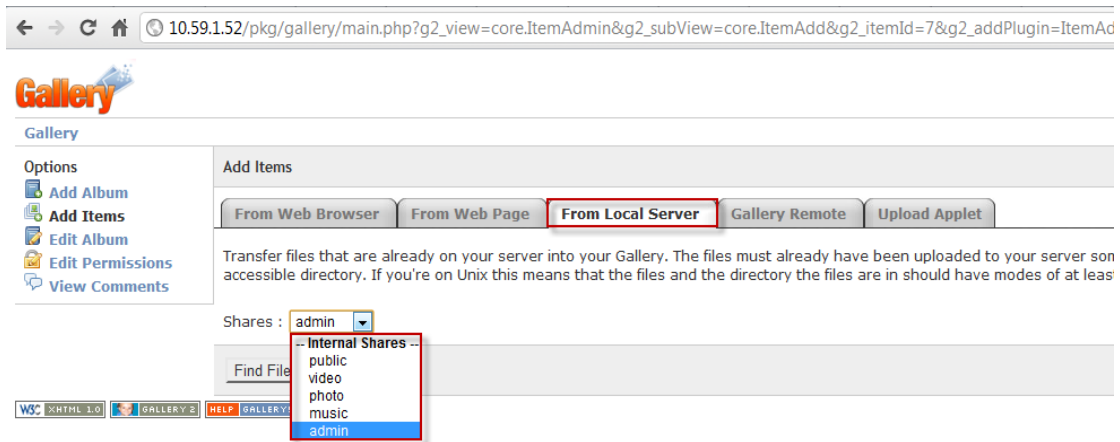


Figure 52. Upload photos from NSA325 v2.

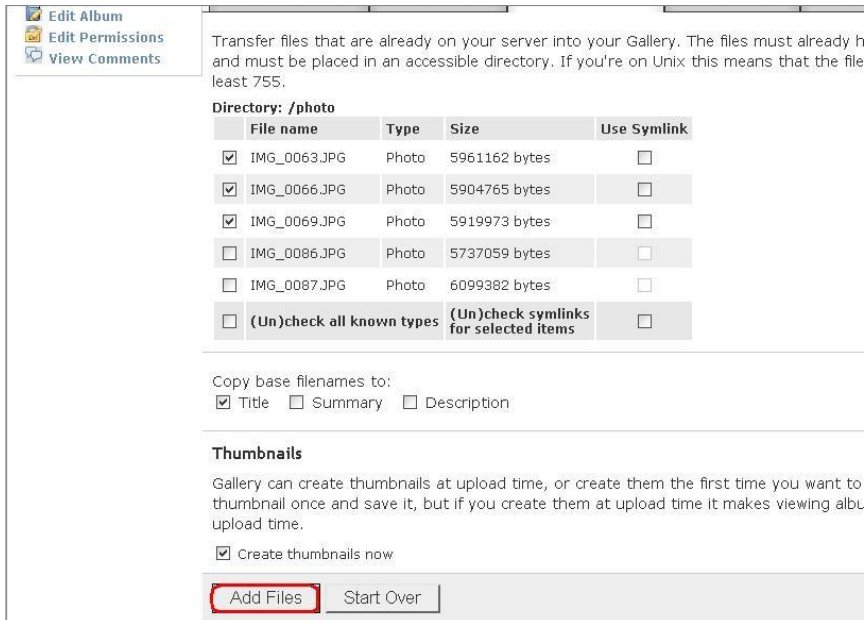


Figure 53. Add selected files.

Then you can view the uploaded photos and edit photos in the screen.

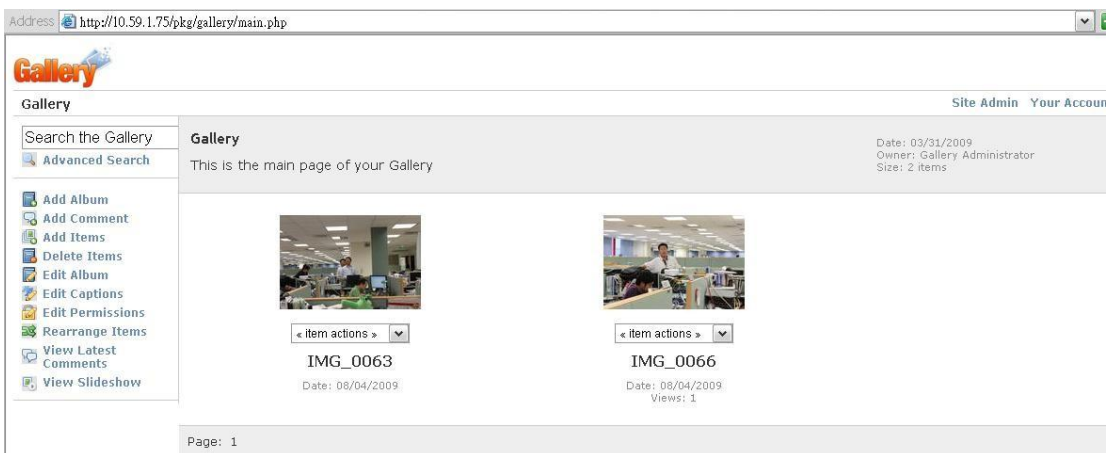


Figure 54. Uploaded photos.

4. Dropbox

Dropbox provides a files backup service. You create an account for Dropbox (<https://www.dropbox.com>), Dropbox will give you 2GB of storage for your files backup. The NSA325 v2 will automatically download the files from the Dropbox server.

Configuration Procedure:

- Enter the username and password
- Enable Dropbox service.
- Configure the Dropbox account information.
- Link your NSA325 v2 with your Dropbox account.

On the NSU main page, login to the Dropbox service for NSA325 v2, go to **Applications > Dropbox**. Then, enable the Dropbox service.



Figure 55 NSU main menu.



Figure 56. Enter the username and password.

After you enable the Dropbox service, the browser is going to link to the Dropbox website. Meanwhile, please make sure that you have the Dropbox account information. After configuring the account information, the system will notify you about the connection to Dropbox.

In the following popup browser, you need to authorize the connection between your account and your NSA325 v2.

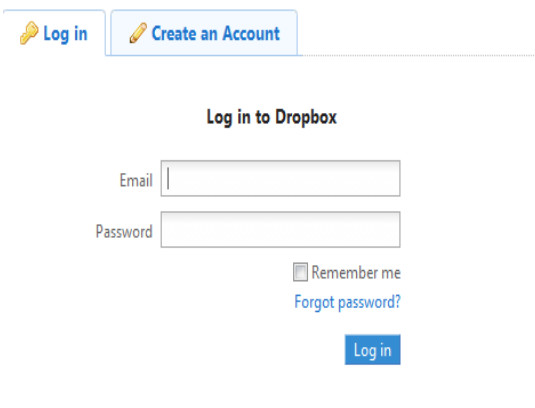


Figure 57. Login to Dropbox.

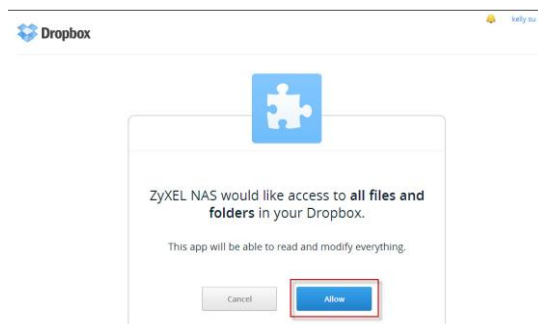


Figure 58. Authorization between your account and NSA325 v2.

After allowing the agreement in the Dropbox page, please also click on the “Get ready” button in the NSA325 v2.

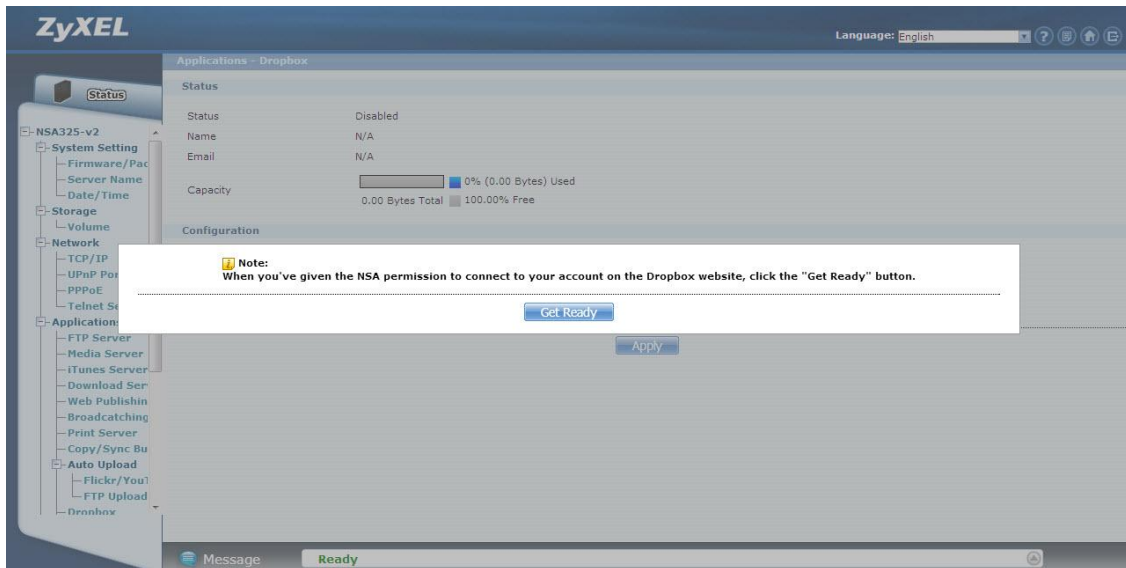


Figure 59. Click on “Get Ready”.

You can check the service status in the NSA325 v2 under **Applications > Dropbox**. In this case, we can see the storage status in your Dropbox account.

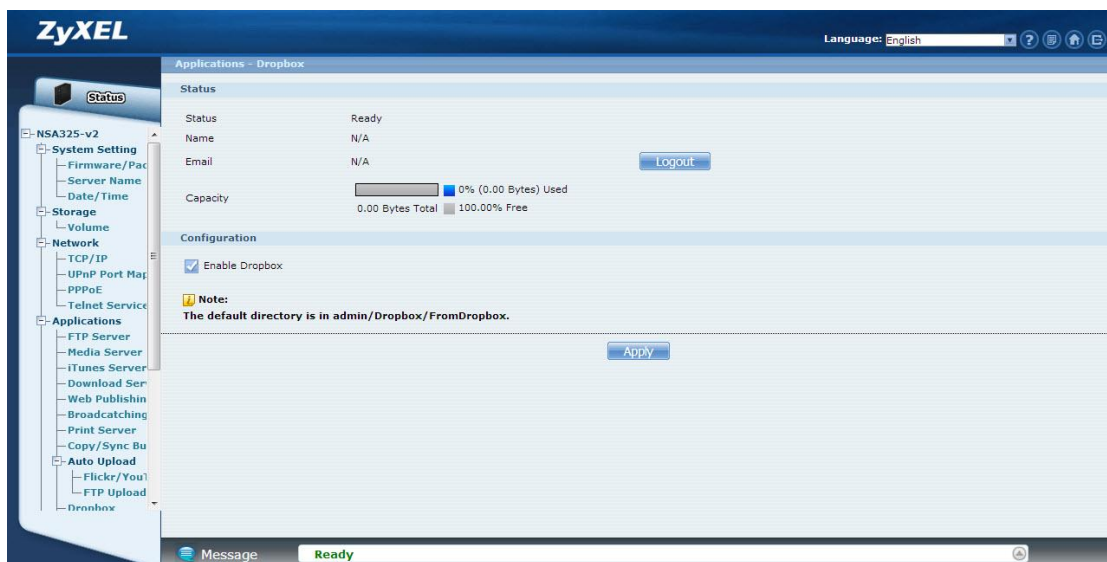


Figure 60. Monitor the service status.

The NSA connects to Dropbox and copies files in the Drop2NAS folder to the NSA's admin\Dropbox\FromDropbox folder, and then empties the Drop2NAS folder. The NSA initiates connections to the Dropbox server so you do not need to configure rules on a firewall in front of the NSA to allow access to the NSA. When your PC has installed Dropbox, you can upload files to the Drop2NAS folder, and then NSA will get files from the Dropbox server.

Note: Do not delete the NAS token file as it is needed for your NSA to work with the Dropbox Account.

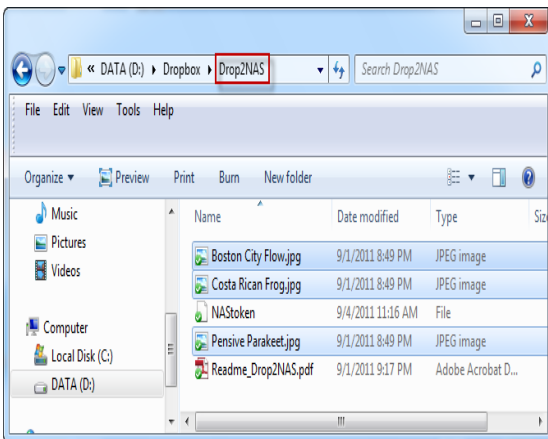


Figure 61. Upload files to folder.

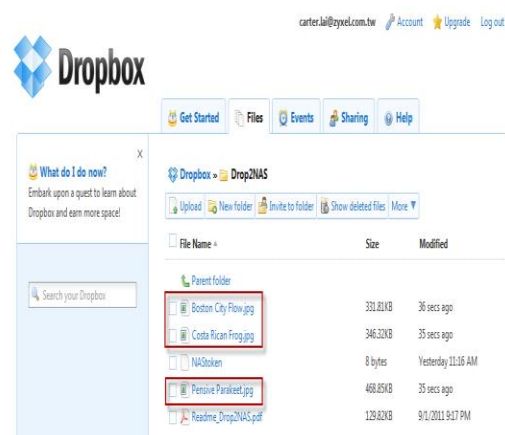


Figure 62. Check files from website.

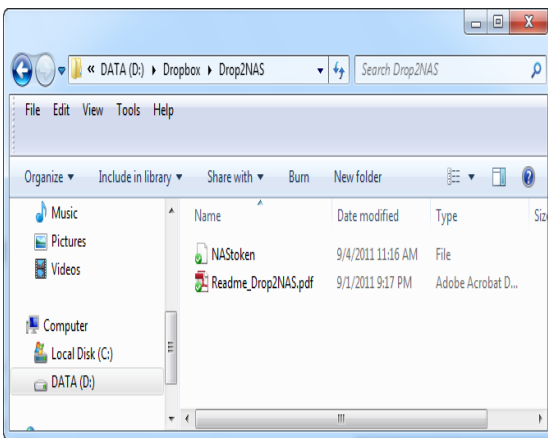


Figure 63. NSA get files from Dropbox server.

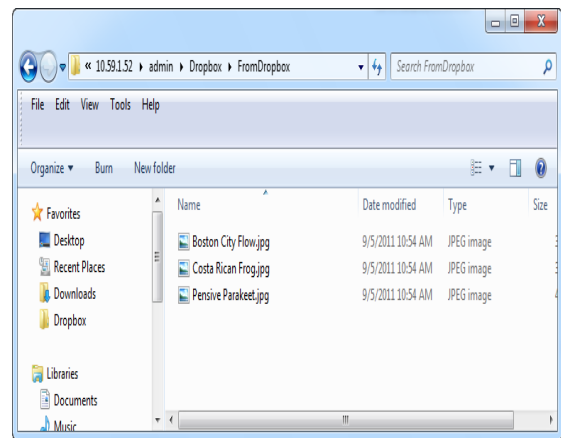


Figure 64. Check files on NSA.

4.1 Using the zDownload Folder

The NSA copies *.torrent files in the zDownload folder to the NSA's admin\download\torrents folder and automatically starts download them.

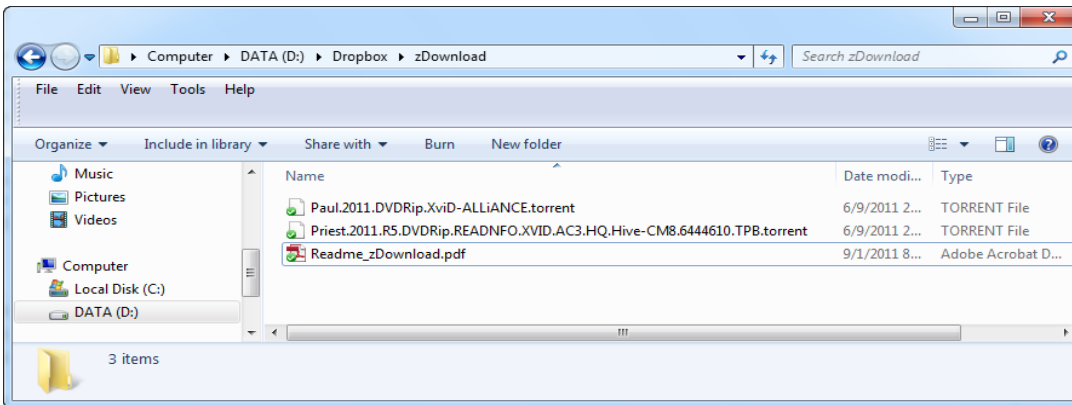


Figure 65. Upload torrent files to zDownload folder.

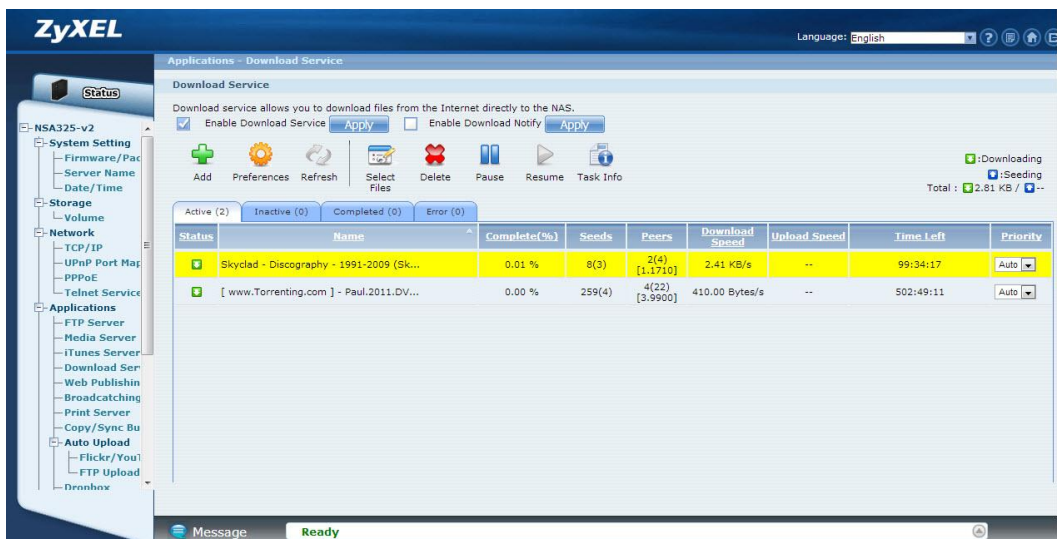


Figure 66. NSA get files and download automatically.

5. Smartphone APP

Use ZyXEL's zMedia app to play files and manage the NSA from iOS version 3 or later device or Android version 2.1 or later smartphone.

Install ZyXEL's zMedia app from the Apple App Store, Android Market, or www.zyxel.com to play files and manage the NSA from your iOS device or Android smartphone.

Login to zMedia

1. Click on the zMedia icon to open the app and automatically search for NSAs on your network.



Figure 67. zMedia App Icon.

2. Select an NSA if you have more than one.

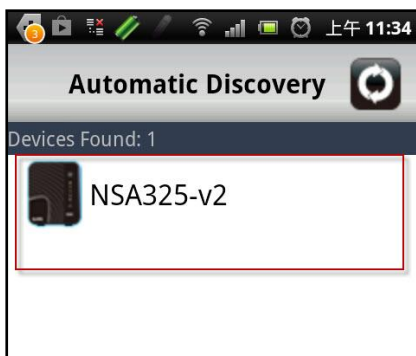


Figure 68 zMedia Automatic Discovery.

3. Use the admin username and password to login.

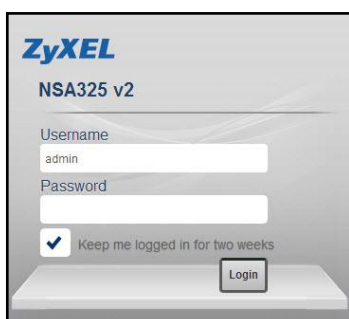
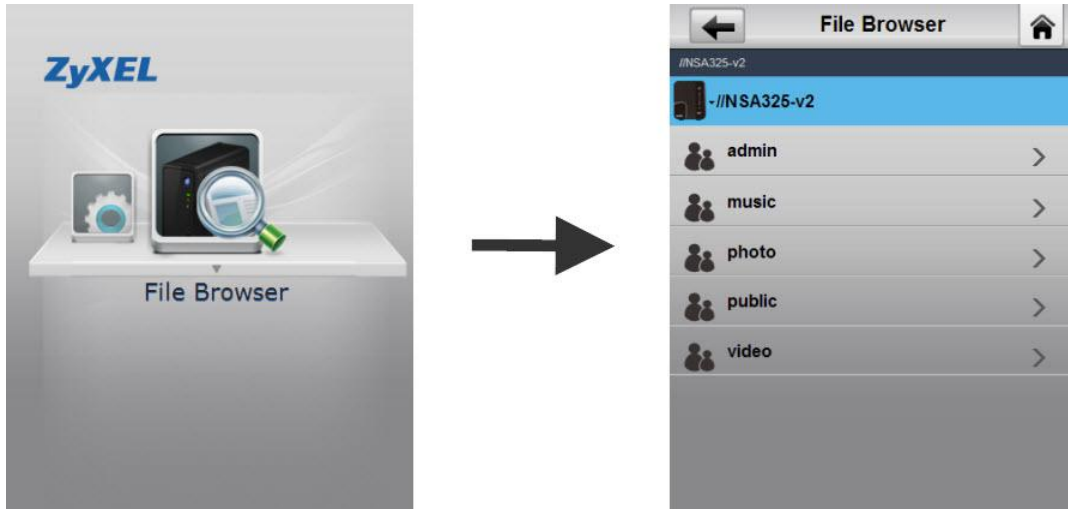


Figure 69. zMedia Login.

5.1 File Browser

Click on the **File Browser** to look through and play files on the NSA.

Figure 70. zMedia File Browser



Click on a share to view its contents.



Network

IPv6

The NSA325 v2 supports IPv6 (Internet Protocol version 6), designed to increase IP address space and enhance features. You can click **Network > TCP/IP** for further configuration.

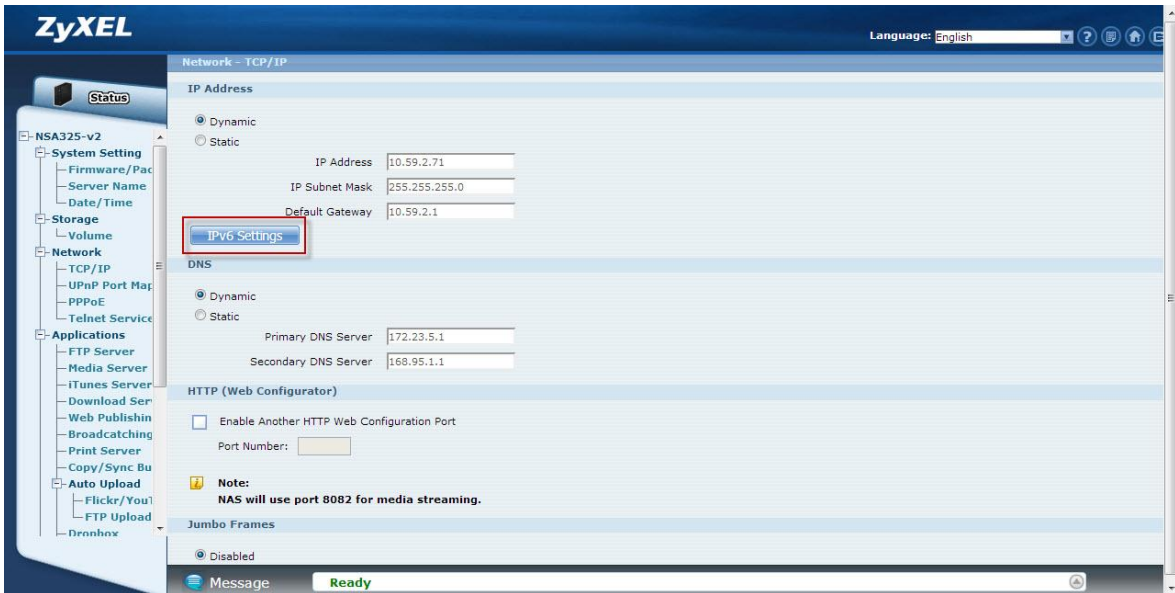


Figure 71. Click IPv6 Settings.

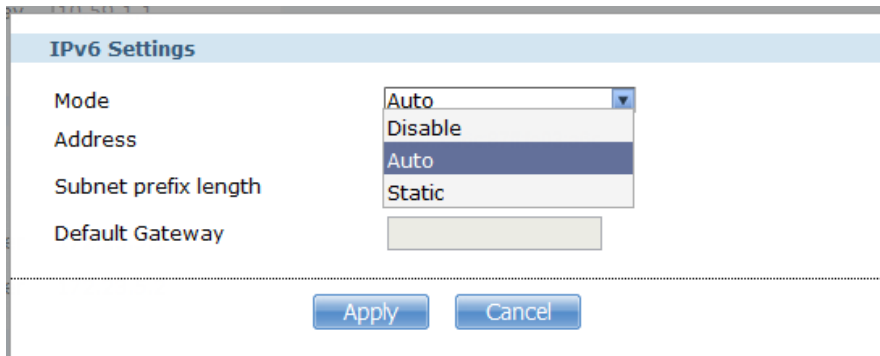


Figure 72. You can select Disable / Auto / Static.

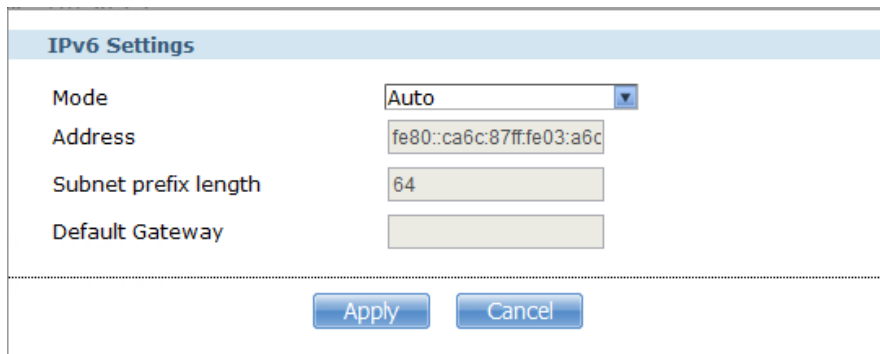


Figure 73. Auto will get IPv6 IP address automatically.

7 Access NSA325 v2 via Samba on Linux

To see which shares are available on a given host, run:

```
# smbclient -L //[IP|hostname]
```

The output of this command should look something like this:

```
[root@localhost ~]# smbclient -L //192.168.104.6
Password:
Domain=[NSA325] OS=[Unix] Server=[Samba 3.5.6]

      Sharename      Type      Comment
      -----      -
      IPC$           IPC       IPC Service (NSA325)
      DISK_210       Disk
      admin          Disk
      music          Disk
      photo          Disk
      video          Disk
      public         Disk
Domain=[NSA325] OS=[Unix] Server=[Samba 3.5.6]

      Server          Comment
      -----
      Workgroup       Master
      -----
      WORKGROUP      NSA325
[root@localhost ~]# _
```

Figure 74

To check the amount of disk space for each mount:

```
# df
```

```
[root@localhost ~]# df
Filesystem            1K-blocks    Used Available Use% Mounted on
/dev/mapper/VolGroup00-LogVol00
18156292    2806460    14412668    17% /
/dev/sda1             101086      12239      83628    13% /boot
tmpfs                 517552         0      517552     0% /dev/shm
[root@localhost ~]# _
```

Figure 75

To mount samba via cifs, run:

```
# mount -t cifs -o username="Username",password="Password" //IP/share /mnt/smb
```

```
umount /mnt/smb
```

```
[root@localhost smb]# mount -t cifs -o username="admin",password="1234" //192.16
8.104.6/music /mnt/smb
```

Figure 76

To check the amount of disk space for each mount:

df

```
[root@localhost ~]# df
Filesystem          1K-blocks      Used Available Use% Mounted on
/dev/mapper/VolGroup00-LogVol00
18156292          2886468    14412668    17% /
/dev/sda1            101086         12239      83628    13% /boot
tmpfs                517552           0      517552     0% /dev/shm
//192.168.104.6/music
243562872        97041188    146521684    40% /mnt/smb
[root@localhost ~]# _
```

Figure 77

8. Login to NSA325 v2 via FTP on Linux

8.1 login to the NSA325 v2 via anonymous FTP on Linux.

Enable Anonymous FTP Access option in the GUI.

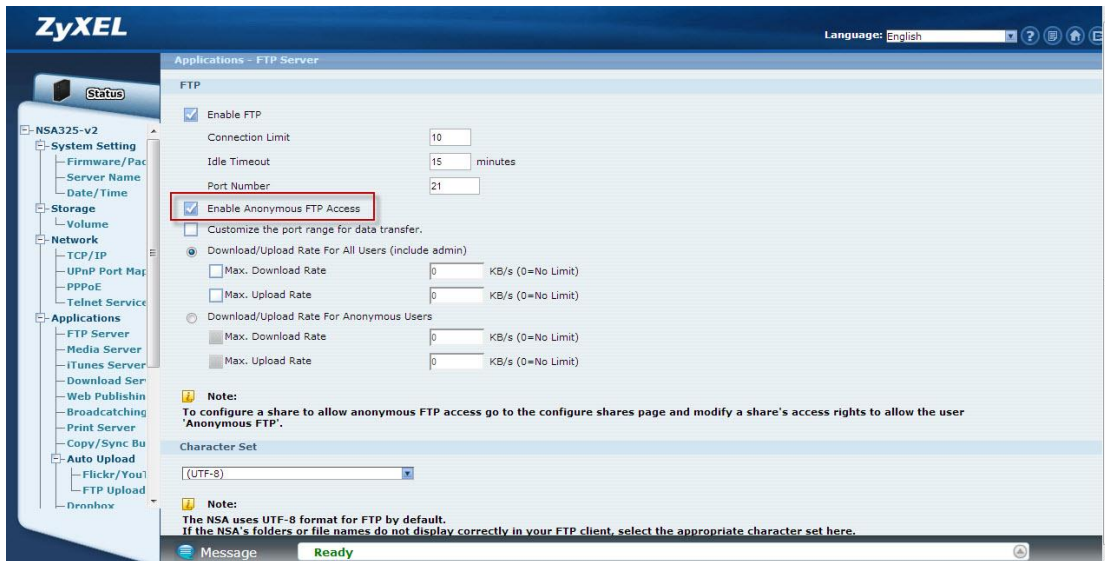


Figure 78

Access NSA325 v2 with anonymous via FTP, run:

```
# lftp [-p port] [-u user[,pass]] [host|IP]
```

```
[root@localhost ~]# lftp 192.168.104.6
lftp 192.168.104.6:~> dir
drwxrwxrwx  6 0      0      0      0 May  2 18:04 .
drwxrwxrwx  6 0      0      0      0 May  2 18:04 ..
drwxrwxrwx  7 0      0      0    152 May  2 17:31 music
drwxrwxrwx  2 0      0      0     22 Apr  2 15:25 photo
drwxrwxrwx  8 0      0      0   4096 May  2 17:16 public
drwxrwxrwx  6 0      0      0   4096 Apr 30 19:08 video
lftp 192.168.104.6:~/> _
```

Figure 79

8.2 Access NSA325 v2 using a username via FTP, run:

```
# ftp [host|IP] [port]
```

```
[root@localhost ~]# ftp 192.168.104.6 21
Connected to 192.168.104.6.
220----- Welcome to Pure-FTPd [TLS] -----
220-You are user number 1 of 10 allowed.
220-Local time is now 17:19. Server port: 21.
220-This is a private system - No anonymous login
220-IPv6 connections are also welcome on this server.
220 You will be disconnected after 15 minutes of inactivity.
500 This security scheme is not implemented
500 This security scheme is not implemented
KERBEROS_V4 rejected as an authentication type
Name (192.168.104.6:root): admin
331 User admin OK. Password required
Password:
230 OK. Current restricted directory is /
Remote system type is UNIX.
Using binary mode to transfer files.
ftp> _
```

Figure 80

You can check content of the NSA325 v2 via FTP.

```
ftp> dir
227 Entering Passive Mode (192,168,104,6,56,50)
150 Accepted data connection
drwxrwxrwx  7 0      0              0 May  2 17:20 .
drwxrwxrwx  7 0      0              0 May  2 17:20 ..
drwxrwxrwx  7 0      0              74 Apr 24 17:22 admin
drwxrwxrwx 17 0      0            4096 Apr 26 09:28 music
drwxrwxrwx  2 0      0              22 Apr  2 15:25 photo
drwxrwxrwx  8 0      0            4096 May  2 17:16 public
drwxrwxrwx  6 0      0            4096 Apr 30 19:08 video
226-Options: -a -l
226 7 matches total
ftp> _
```

Figure 81

Get file from NSA325 v2, run:

```
# get filename
```

```
ftp> dir
227 Entering Passive Mode (192,168,104,6,11,112)
150 Accepted data connection
drwxrwxrwx  2 502    500          4096 May  2 17:37 .
drwxrwxrwx  7 0      0           152 May  2 17:31 ..
-rwxrwxrwx  1 502    500     9521481 Feb 18 2011 01. Pyramid (Feat. Iyaz)
.mp3
-rwxrwxrwx  1 502    500     10567836 Oct 30 2010 02. Reset.mp3
-rwxrwxrwx  1 502    500     8706880 Oct 30 2010 03. In This Song.mp3
-rwxrwxrwx  1 502    500     8810335 Oct 30 2010 04. Nobody's Singin' To
Me.mp3
-rwxrwxrwx  1 502    500     10373489 Oct 30 2010 05. Thank You.mp3
-rwxrwxrwx  1 502    500     7471000 Oct 30 2010 06. I Love You.mp3
-rwxrwxrwx  1 502    500     10054801 Oct 30 2010 07. In Love So Deep.mp3
-rwxrwxrwx  1 502    500     9927335 Oct 30 2010 08. All That I Need To S
urvive.mp3
-rwxrwxrwx  1 502    500     9341128 Oct 30 2010 09.Nothing.mp3
-rwxrwxrwx  1 502    500     8203240 Oct 30 2010 10. The Truth Is.mp3
-rwxrwxrwx  1 502    500     8998409 Oct 30 2010 11. Did It For You.mp3
-rwxrwxrwx  1 502    500     9679106 Oct 30 2010 12. Note To God.mp3
-rwxrwxrwx  1 502    500     7905447 Oct 30 2010 13. Breathe You Out.mp3
-rwxrwxrwx  1 502    500     9447712 Oct 30 2010 14. Are We Over.mp3
226-Options: -a -l
226 16 matches total
ftp> _
```

Figure 82

```
ftp> get 09.Nothing.mp3
local: 09.Nothing.mp3 remote: 09.Nothing.mp3
227 Entering Passive Mode (192,168,104,6,34,182)
150-Accepted data connection
150 9122.2 kbytes to download
226-File successfully transferred
226 2.669 seconds (measured here), 3.34 Mbytes per second
9341128 bytes received in 2.7 seconds (3.4e+03 Kbytes/s)
ftp> _
```

Figure 83

Delete file from NSA325 v2, run:

```
# delete filename
```

```
ftp> delete 09.Nothing.mp3
250 Deleted 09.Nothing.mp3
ftp> dir
227 Entering Passive Mode (192,168,104,6,241,36)
150 Accepted data connection
drwxrwxrwx  2 501    500          6 May  2 17:58 .
drwxrwxrwx  3 502    500     4096 May  2 17:50 ..
226-Options: -a -l
226 2 matches total
ftp> _
```

Figure 84

Create folder in NSA325 v2, run:

mkdir foldername

```
ftp> mkdir upload
257 "upload" : The directory was successfully created
ftp> _
```

Figure 85

Remove folder from NSA325 v2, run:

rm foldername

```
ftp> rm upload
250 The directory was successfully removed
ftp> _
```

Figure 86

To exit NSA325 v2 via FTP, run:

bye

```
ftp> bye
250-Goodbye. You uploaded 9123 and downloaded 0 kbytes.
250-OK. Current directory is /
250 Logout.
[root@localhost ~]# _
```

Figure 87

9. Login to NSA325 v2 via Telnet on Linux

Enable telnet service via the GUI.

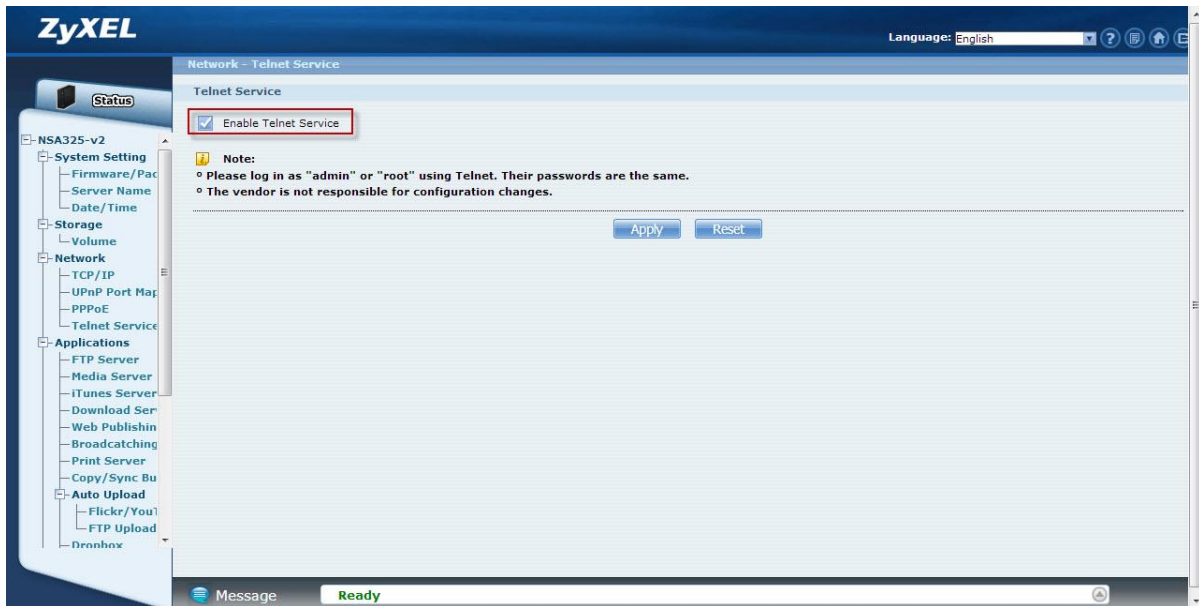


Figure 88

To access a host via telnet, run:

```
# telnet [host|IP [port]]
```

```
[root@localhost ~]# telnet 192.168.104.6 23
Trying 192.168.104.6...
Connected to 192.168.104.6 (192.168.104.6).
Escape character is '^I'.

NSA325 login: admin
Password:

BusyBox v1.17.2 (2012-11-09 11:45:26 CST) built-in shell (ash)
Enter 'help' for a list of built-in commands.

~ $ _
```

Figure 89

To exit NSA325 v2 via telnet, run:

`# exit`

```
~ $ exit
Connection closed by foreign host.
[root@localhost ~]# _ █
```

Figure 90

10. Access NSA325 v2 via NFS

Install the NFS package via the GUI.

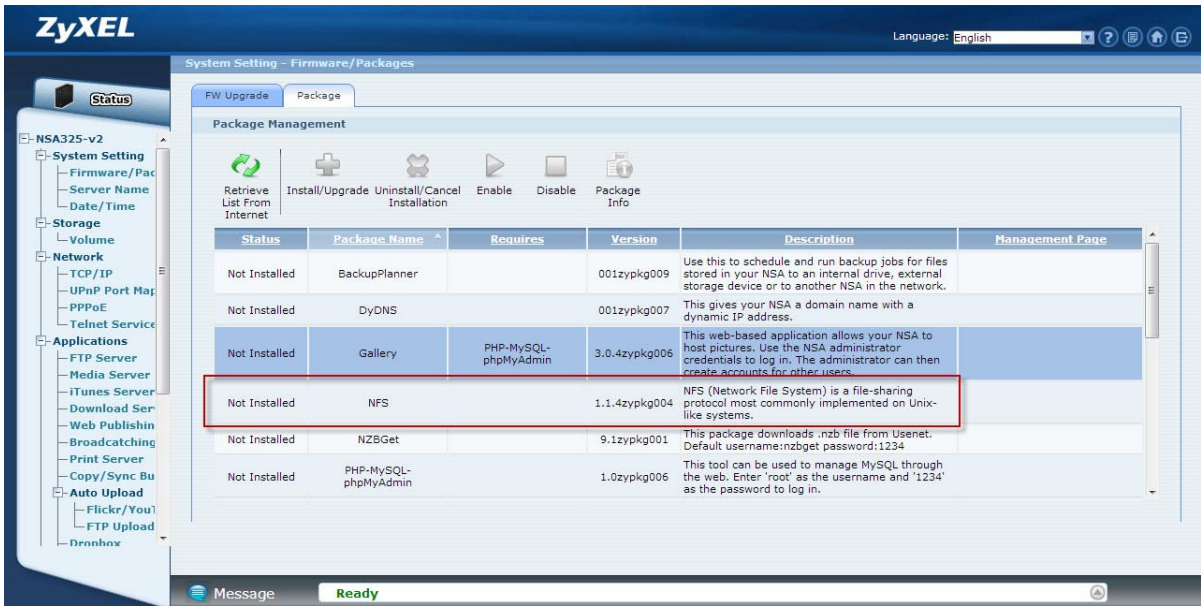


Figure 91

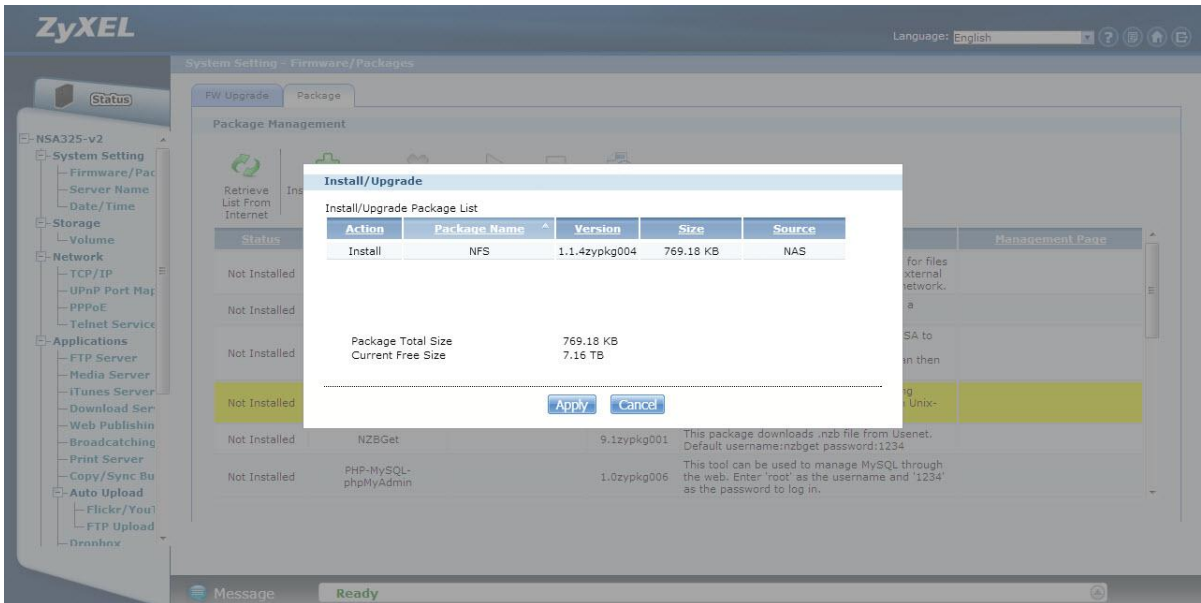


Figure 92

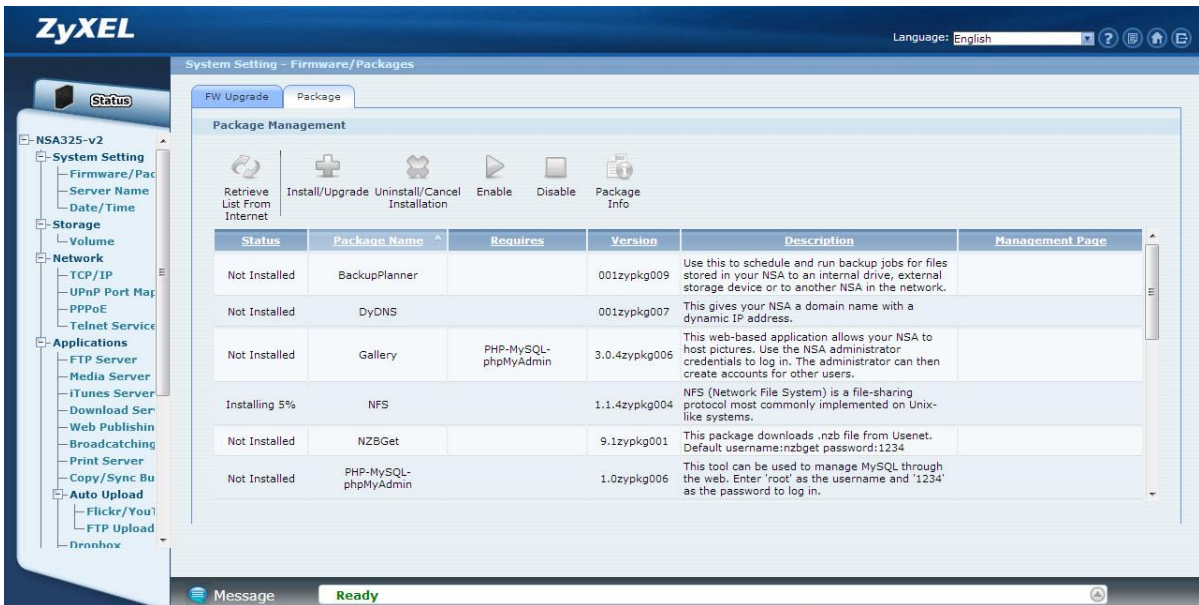


Figure 93

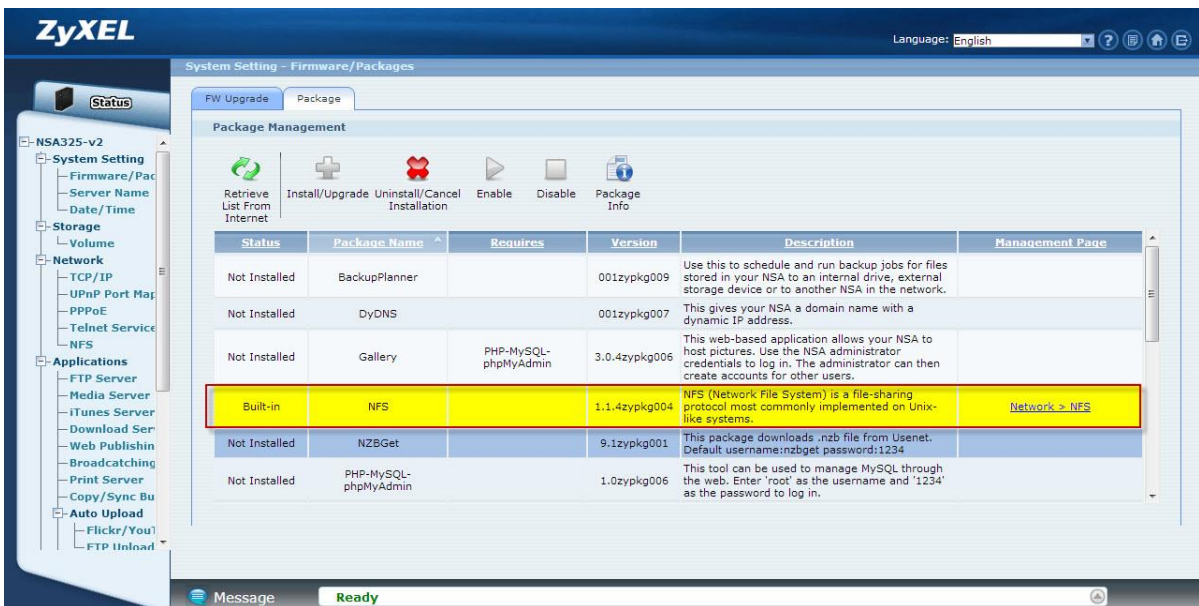


Figure 94

Add the NFS Share.

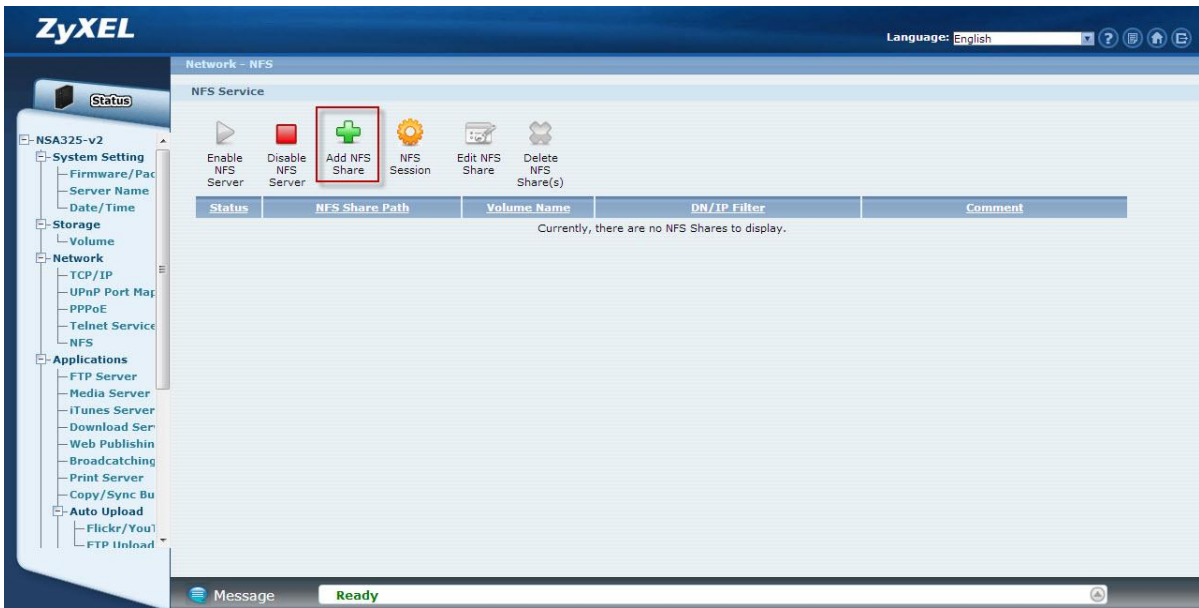


Figure 95

Edit the NFS Share.

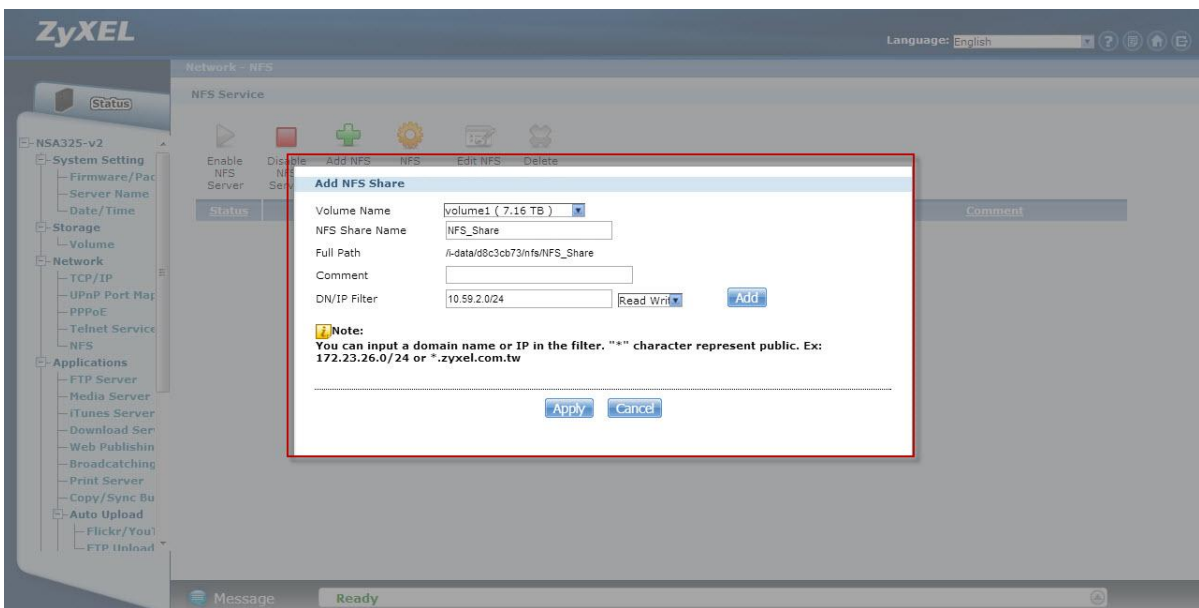


Figure 96

The NFS editing is complete.

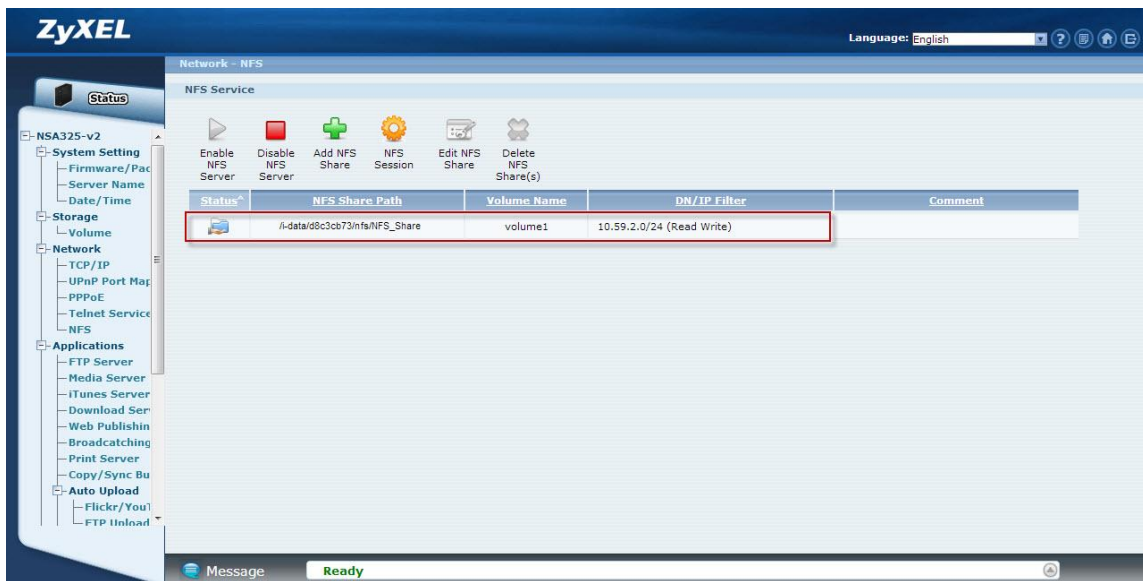


Figure 97

Enable the NFS service on Linux

```
# /etc/init.d/rpcbind start
```

```
# /etc/init.d/nfslock start
```

```
[root@dhcpcpc16 ~]# /etc/init.d/rpcbind start
[root@dhcpcpc16 ~]# /etc/init.d/nfslock start
[root@dhcpcpc16 ~]# _
```

Figure 98

Verify that the NFS server has exported the directory:

```
# showmount -e ServerName
```

```
[root@dhcpcpc16 ~]# showmount -e 10.59.2.100
Export list for 10.59.2.100:
/i-data/12494823/nfs/NFS_Share 10.59.2.0/24
[root@dhcpcpc16 ~]# _
```

Figure 99

Create a mount point for the remote resource using the mkdir command:

```
# mkdir -p /local/directory
```

```
[root@dhcpc16 ~]# mkdir -p /home/test
[root@dhcpc16 ~]# _
```

Figure 100 Establish the local mount point using the mkdir command.

Mount share of NSA325 v2:

```
# mount -t nfs ServerName:/remote/directory /local/directory
```

```
[root@dhcpc16 ~]#
[root@dhcpc16 ~]# mount -t nfs 10.59.2.100:/i-data/12494823/nfs/NFS_Share /home
/test
```

Figure 101 where ServerName is the name of the NFS server, /remote/directory is the directory on the NFS server you want to mount, and /local/directory is the mount point on the NFS client.

To check the amount of disk space for each mount you have:

```
[root@dhcpc16 ~]# df
Filesystem          1K-blocks      Used Available Use% Mounted on
/dev/mapper/VolGroup00-LogVol00
18156292    3412552   13806576   20% /
/dev/sda1           101086      12239     83628   13% /boot
tmpfs                517552         0     517552    0% /dev/shm
10.59.2.100:/i-data/12494823/nfs/NFS_Share
243562880   97043072  146519808   40% /home/test
[root@dhcpc16 ~]# _
```

Figure 102

To check IP address of Linux.

```
[root@dhcpcpc16 ~]#  
[root@dhcpcpc16 ~]# ifconfig  
eth0      Link encap:Ethernet  HWaddr 00:0C:29:2B:6B:0D  
          inet addr:10.59.2.36  Bcast:10.59.2.255  Mask:255.255.255.0  
          inet6 addr: fe80::20c:29ff:fe2b:6b0d/64 Scope:Link  
          UP BROADCAST RUNNING MULTICAST  MTU:1500  Metric:1  
          RX packets:1875 errors:0 dropped:0 overruns:0 frame:0  
          TX packets:166 errors:0 dropped:0 overruns:0 carrier:0  
          collisions:0 txqueuelen:1000  
          RX bytes:160725 (156.9 KiB)  TX bytes:15253 (14.8 KiB)  
          Interrupt:67 Base address:0x2000  
  
lo        Link encap:Local Loopback  
          inet addr:127.0.0.1  Mask:255.0.0.0  
          inet6 addr: ::1/128 Scope:Host  
          UP LOOPBACK RUNNING  MTU:16436  Metric:1  
          RX packets:1473 errors:0 dropped:0 overruns:0 frame:0  
          TX packets:1473 errors:0 dropped:0 overruns:0 carrier:0  
          collisions:0 txqueuelen:0  
          RX bytes:2508872 (2.3 MiB)  TX bytes:2508872 (2.3 MiB)  
  
[root@dhcpcpc16 ~]# _
```

Figure 103

NSA325 v2 shows the NFS session in detail.

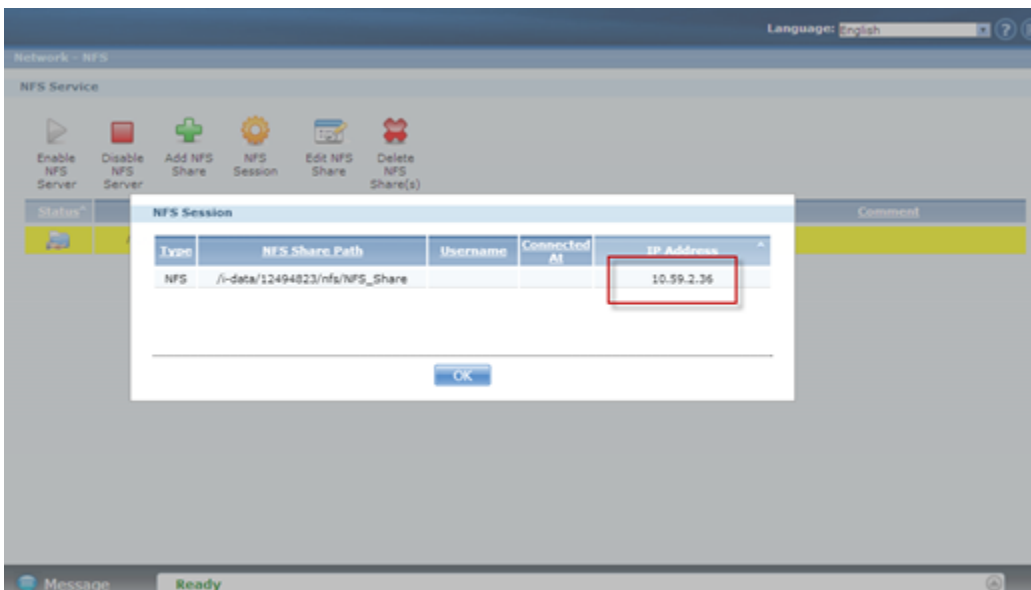


Figure 104

Chapter 2 – FAQ

2

1. What is RAID?

RAID stands for **R**edundant **A**rray of **I**nexpensive **D**isks. It takes two or more hard disks achieve greater levels of performance, reliability and/or larger volume of data size.

2. What kind of RAID is supported by the NSA325 v2?

NSA325 v2 supports Raid 1, JBOD, or RAID0.

3. What is the file system supported by the NSA325 v2?

Internal file system: XFS (or EXT4).

External file system: FAT32, FAT16, EXT2, EXT3 and Reiser FS.

4. Which kind of multimedia server does the NSA325 v2 support?

NSA325 v2 supports Squeeze Center, DLNA server, UPnP AV Server, and iTunes Server.

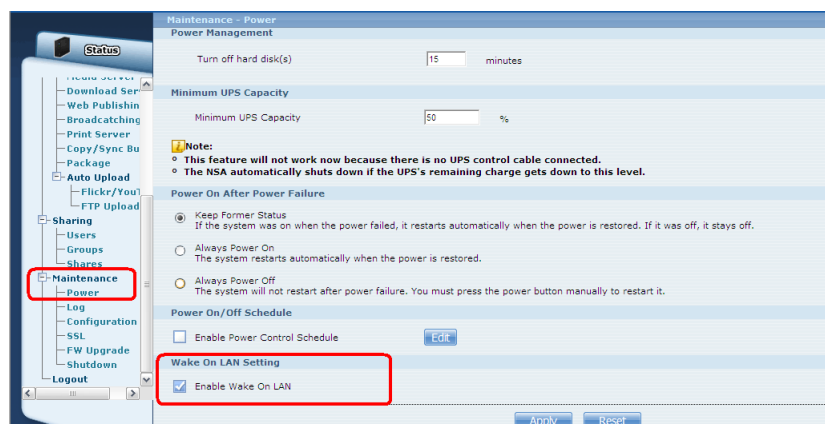
5. Does the NSA325 v2 support a DLNA media server?

Yes. The NSA325 v2 supports a DLNA 1.5 compliant media server.

6. What is the feature “Wake On LAN”?

You can turn on the NSA325 v2 through its wired Ethernet connection after enabling

Wake On LAN. To use Wake On LAN from a computer on your LAN, install a program such as Wake On LAN EX or other Wake On LAN programs that supports sending magic packets. You can also use Wake On LAN from a remote location if the router in front of the NSA325 v2 that supports sending magic packets.



7. Which types of video file formats are supported by the NSA325 v2?

NSA325 v2 supports the following video formats: MPEG-1/MPEG-2, MPEG-4, AVI, DivX, Motion JPEG, Quick Time Video, RealMedia, Ogg, Matroska, ASF, Windows Media Video and ISO. Subtitles are also supported by the NSA325 v2.

8. Which types of audio file formats are supported by the NSA325 v2?

NSA325 v2 supports the following audio formats: MP3, Ogg Vorbis, RealMedia, WAVE, Windows Media Audio, Matroska, Monkeys Audio, MP1, MP4, PCM, LPCM, DTS, AC3, Free Lossless Audio Codec, Au, AAC, 3GPP, AIFF, RIFF-based MIDI and Playlist.

9. Which types of image file formats are supported by the NSA325 v2?

NSA325 v2 supports bitmap, JPEG, and PNG.

10. Which types of web browsers are supported by the NSA325 v2?

NSA325 v2 supports Internet Explorer 6.0 and later versions, and Firefox 2.00 and later versions. Currently, NSA325 v2 does not support the Safari web browser.