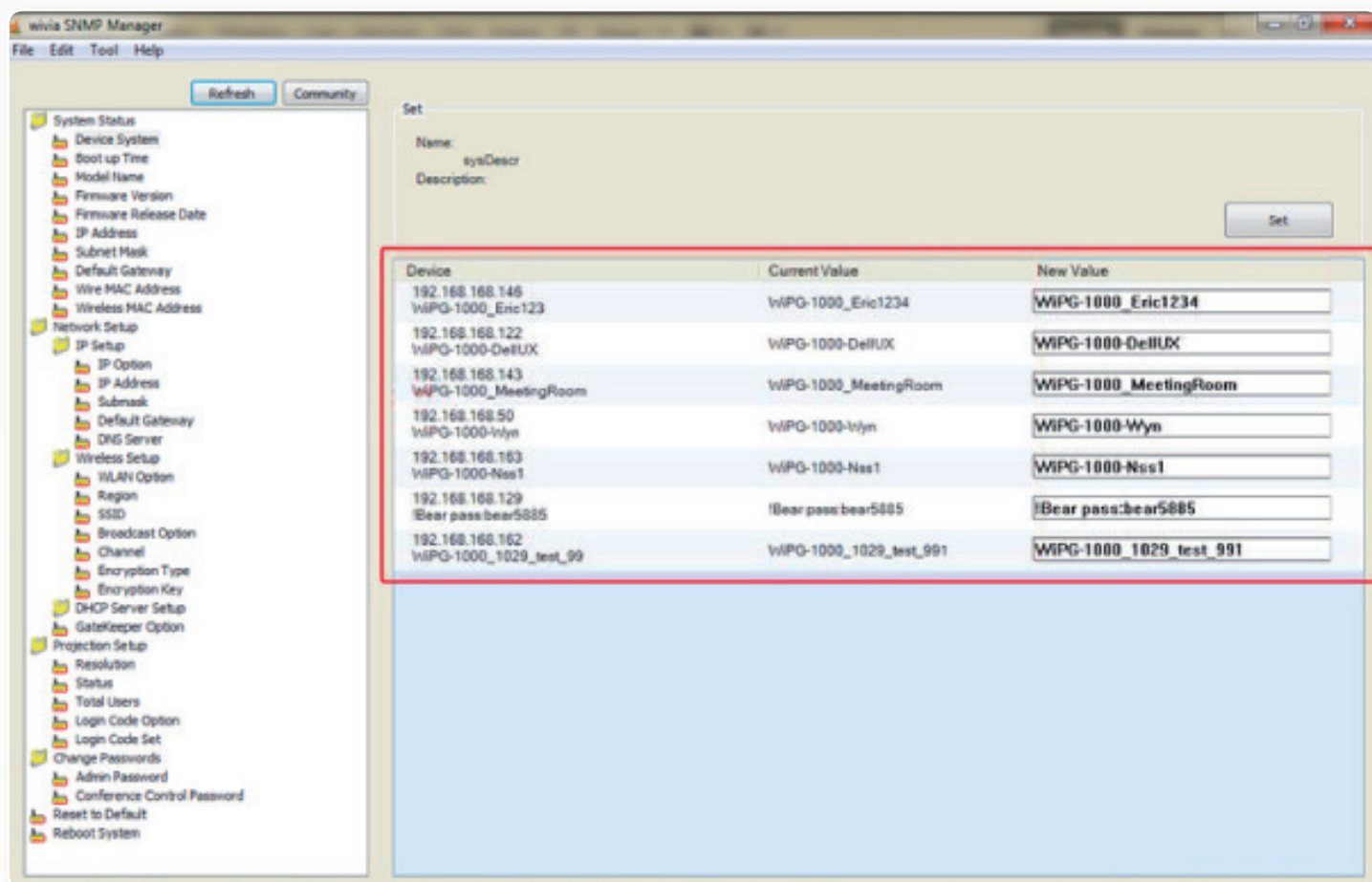
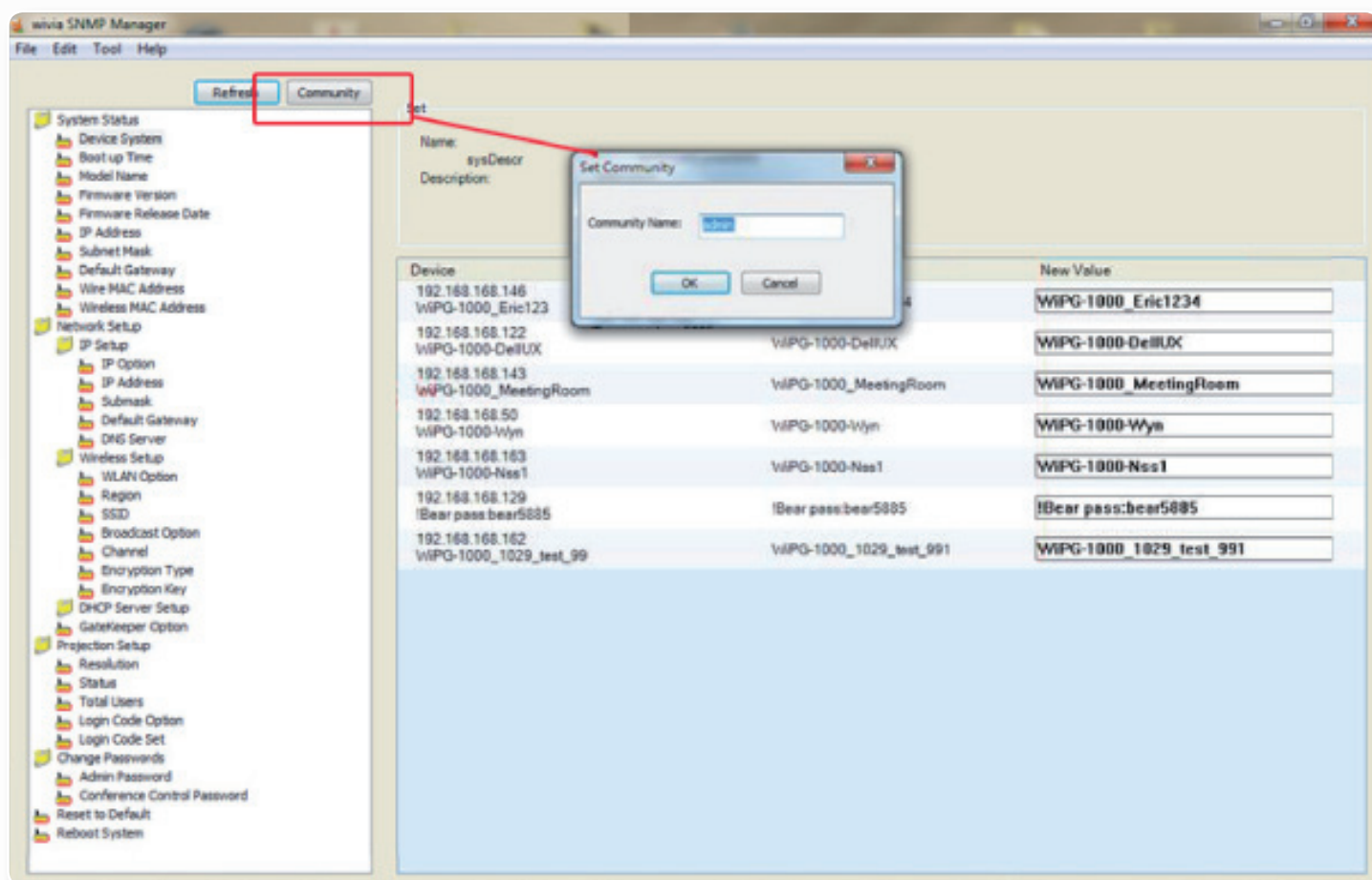


# Manage multiple units with SNMP Manager

1. Install and open SNMP Manager from the Utility folder on the WePresent USB.
2. Here you will find all the WePresent devices within your network.  
On the left side, you can see all available settings that are also in the WePresent Admin menu.



3. Before you are able to adjust any settings, click on “Community” and enter the password to the WePresent Admin menu (default this is “Admin”).



4. Now you can adjust all settings for each wepresent, by filling in the new value.  
(Look at discription above to see what value to use for which setting).
5. After adjusting the settings to your liking, select “reboot system”at bottom left.  
Then fill in new value “1” and click “Set” to reboot the system.  
After reboot, when you click “refresh” you will see all changes have been made.

