



USB 3.0 Universal Dual Video Docking Station with SD reader

User Manual

Model: DSH-300U3

Ver. 1.00

All brand names and trademarks are properties of their respective owners.

www.vantecusa.com

Copyright © 2014 Vantec Thermal Technologies. All Rights Reserved

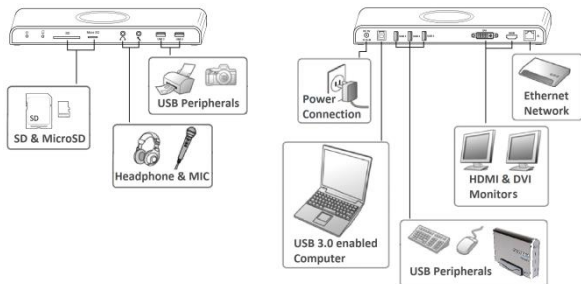
Contents:

| | |
|--|----------|
| Chapter 1: Introduction | 3 |
| 1.1 Product Introduction | 3 |
| 1.2 Features | 4 |
| 1.3 System Requirements | 6 |
| 1.4 Package Contents..... | 6 |
| 1.5 Hardware Layout | 6 |
| Chapter 2: Getting Started..... | 8 |
| 2.1 Driver Installation | 8 |
| 2.1.1 Installation for Windows..... | 8 |
| 2.1.2 Installation for Mac OS X | 9 |
| 2.2 Hardware Installation | 10 |
| 2.3 Verifying the installation..... | 12 |
| 2.3.1 Verifying for Windows | 12 |
| 2.3.2 Verifying for Mac OS X..... | 13 |
| 2.4 Display Configuration..... | 14 |

Chapter 1: Introduction

1.1 Product Introduction

The Vantec USB 3.0 Universal Dual Video Docking Station with SD reader is an expansion device designed for today's ultra-lightweight and portable laptops. It provides an easy link to all the peripherals using a single USB 3.0 connection. Once connected, you can access your monitors (HDMI/DVI), headphone, microphone, Gigabit Ethernet network, five additional USB 3.0 ports and SD/MicroSD reader. The Dual HD video port can easily turn your laptop into a Multi-Monitor Workstation and the SD/MicroSD reader supports newer and larger capacity cards. The availability of five additional USB 3.0 ports gives you so much more devices that you can connect and use like storage, mouse, keyboard, and printers. Simplify your workspace and connect all your peripherals with the Vantec USB 3.0 Universal Dual Video Docking Station and create an office setup without sacrificing portability.



1.2 Features

- An ideal solution for expanding the connection and optimization of your Laptop, Ultrabook and MacBook
- Single USB 3.0 connection to support for Five USB 3.0 ports, Dual Display (HDMI, DVI), Gigabit Ethernet Connection, Audio In & Out, and SD & MicroSD card reader to your computer system
- Support for latest Mac OS X and Windows OS
- Bundle with HDMI to DVI converter and DVI to VGA converter

Video:

- Dual Display Support allow adding up two monitors for Extend / Mirror or Primary Display
- HDMI (2048x1152) and DVI (1920x1200) ports for two external monitors support

- Support HD 1080p video for high resolutions monitor / display
- Video Playback via HDCP (HDMI and DVI)
- Latest DisplayLink Technology

Audio:

- Audio out to support 2.1 CH
- Audio in via MIC jack
- Virtual 5.1 channel sound via HDMI

USB 3.0:

- Support Five USB 3.0 ports
- Compatible with SuperSpeed USB 3.0 and backwards compatible with USB 2.0 specification
- Support UASP for added speed
- USB Battery Charging Specifications v1.2 (SDP, CDP, DCP) for smart phone.

Network:

- Gigabit Ethernet wired connectivity (backwards compatible with 10/100 Ethernet)
- Capable of Full-Duplex (2Gbps)
- Auto MDI-X for simplify connection
- Wake on LAN function

Card Reader:

- Dedicated slot for SD and MicroSD card

- Support Secure Digital v1.0 / v1.1 / v2.0/ SDHC / SDXC (Capacity up to 2TB)
- Support Secure Digital v3.0 UHS-I (Ultra High Speed): SDR12/SDR25/SDR50/DDR50/SDR104

1.3 System Requirements

- Windows® XP 32-bit, Vista, 7, 8, 8.1 (32/64 bit)
- Mac OS X 10.6 or above
- Available USB 3.0 port

1.4 Package Contents

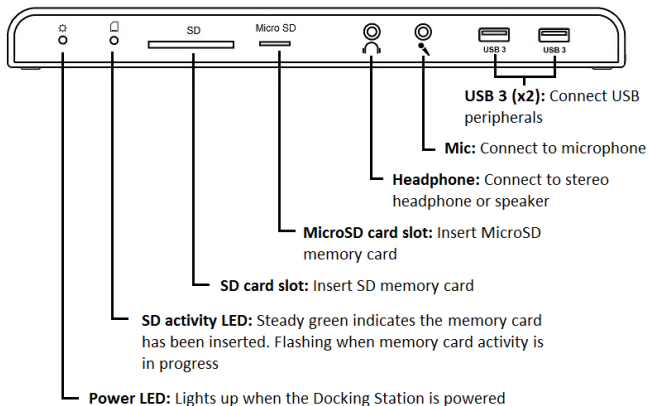
- 1 x USB 3.0 Universal Dual Video Docking Station with SD reader
- 1 x USB 3.0 Cable
- 1 x Quick Installation Guide
- 1 x Driver CD
- 1 x Power Adapter
- 2 x Video converter (HDMI to DVI and DVI to VGA)

1.5 Hardware Layout

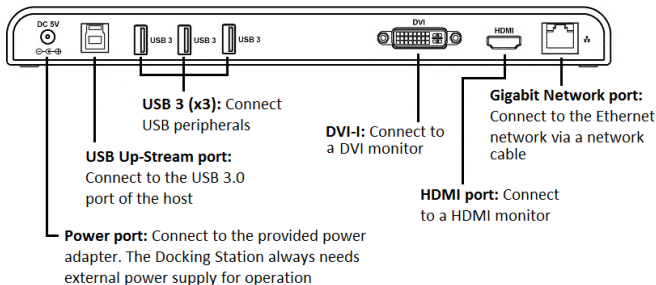
USB 3.0 Universal Dual Video Docking Station with SD reader:

(1 x HDMI output, 1 x DVI output, 1 x RJ45, 1 x Mic In, 1 x Audio, 1 x SD card slot, 1 x Micro SD card slot, 5 x USB 3.0 ports, 1 x USB 3.0 Up-Stream port) :

Front View



Rear View



Chapter 2: Getting Started

2.1 Driver Installation

IMPORTANT! Please ensure the driver installation is completed before connecting the DSH-300U3 Docking Station to the computer.

Follow the procedures below to install the driver and then connect the Docking Station to your system.

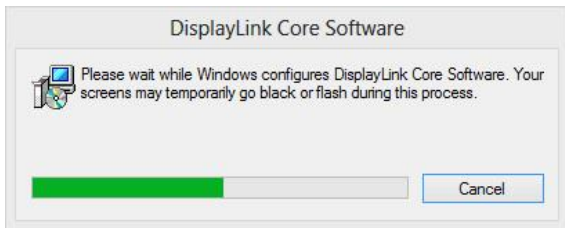
2.1.1 Installation for Windows

1. Insert the provided CD into your optical drive. Browse to the DSH-300U3 Folder and select the Windows OS. Start the setup by clicking on the DisplayLink setup program.



*Note: Actual image may vary

2. Follow the instructions on screen to install the driver.



*Note: Actual image may vary

3. Please wait while Windows configures DisplayLink Core Software. Your screens may temporarily go black or flashing during this process.
4. After driver installation is completed, you must restart your computer.

2.1.2 Installation for Mac OS X

1. Insert the provided CD into your optical drive. Browse to the DSH-300U3 Folder and select the Mac OS X Folder that contains the setup program. Start the setup by clicking on the DisplayLink Software Installer program.

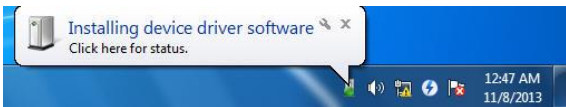


*Note: Actual image may vary

2. Follow the instructions on screen to install the driver. After driver installation is completed, you must restart your computer.

2.2 Hardware Installation

1. Plug the power adapter into the power jack of the Docking Station.
2. Connect the USB 3.0 Docking Station:
Plug the USB 3.0 cable into the USB 3.0 Up-Stream port on the back of the Docking Station. Then a pop-up message will appear in the notification area indicating the installation is complete.



* Actual strings depend on your operation system. This screen shot is from Windows 7 and might vary slightly for each operating system.

3. Connecting Ethernet network device

- Connect an Ethernet cable to the RJ45 port on the Docking Station
- Connect the other end of the Ethernet cable to your network hub, switch or router

4. Connecting DVI/HDMI monitor

- For DVI port: Use a DVI cable (not provided) to connect the DVI port to a monitor equipped with DVI input jack
- For HDMI port: Use a HDMI cable (not provided) to connect the HDMI port to a monitor equipped with HDMI input jack
- If you do not have the right video connector, you can use the provided converter to convert the ports that matches your monitors

5. Connecting USB 2.0/USB 3.0 devices

- Connect your USB devices to the USB 3.0 ports on the Docking Station.

6. Connect speaker/headphone and mic

- Insert the speaker/headphone jack into the green port labeled headphone on the front of the Docking Station.
- To connect a microphone, insert the microphone jack into

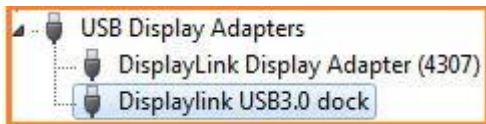
the pink port labeled microphone on the front of the Docking Station.

7. To insert memory card
 - For SD memory card: Gently insert a SD memory card, with the label side facing up, into the SD card slot on the front of the Docking Station
 - For MicroSD memory card: Gently insert a MicroSD memory card, with the label side facing up, into the MicroSD slot on the front of the Docking Station

2.3 Verifying the installation

2.3.1 Verifying for Windows

1. Click on the “**Device Manager**” tab in the Windows Control Panel.
Start > Control Panel > Device Manager
2. In the **USB Display Adapters** group, an item named **Displaylink USB 3.0 dock** should be displayed.



Note: If there is a question or exclamation mark next to that item, then the driver is not properly installed. Please delete the item, select

the **Delete the driver software for this device** option (if provided), unplug the Docking Station from your computer and then repeat the installation steps.

2.3.2 Verifying for Mac OS X

1. Choose About this Mac from the Apple menu.
2. Click on More Info...
3. In the Contents sidebar select USB from the Hardware section.
4. Scroll the list to reveal the USB 3.0 Docking Station information


The screenshot shows the 'About This Mac' window with the 'More Info...' button clicked. The 'Hardware' section is expanded to 'USB'. The 'USB Device Tree' pane shows a hierarchy of USB devices, with 'DisplayLink USB3.0 dock' selected. The details for this device are shown in the 'DisplayLink USB3.0 dock:' section.

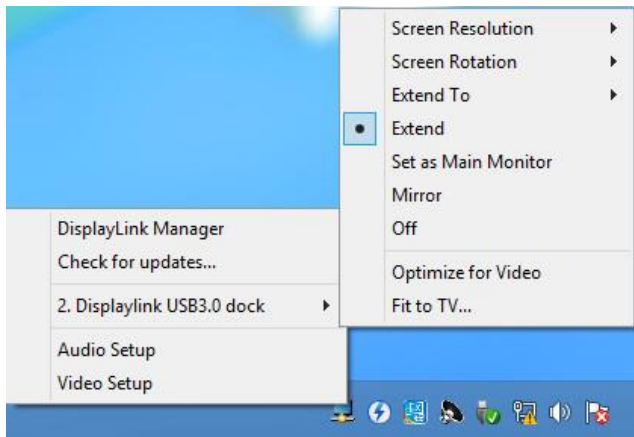
| | |
|-------------------------|--------------------------------|
| Product ID: | 0x4307 |
| Vendor ID: | 0x17e9 (DisplayLink (UK) Ltd.) |
| Version: | 7.71 |
| Serial Number: | SUNR360100145 |
| Speed: | Up to 5 Gb/sec |
| Manufacturer: | DisplayLink |
| Location ID: | 0x15220000 / 14 |
| Current Available (mA): | 900 |
| Current Required (mA): | 2 |
| BSD Name: | en5 |

2.4 Display Configuration

When USB 3.0 Docking Station is attached, an icon appears in the taskbar. This gives you access to the DisplayLink manager menu.

To use the DisplayLink Manager Menu

1. From the taskbar, click the DisplayLink icon 
2. A menu appears with several options. These are shown and described below.



- **Screen Resolution:** Click to select an available resolution. Note: This function is disabled in mirror mode, as the resolution is

defined by the resolution of the primary monitor

- **Screen Rotation:** Rotates the screen according to the desired orientation
- **Extend to:** Extends the screen according to the desired orientation
- **Extend:** This is the default settings of the USB 3.0 Docking Station. This mode extends your desktop for easy viewing of multiple windows. The window will move off the primary display from the right side and enter the extended display from the left side
- **Set as Main Monitor:** Sets the extended screen as the main screen
- **Mirror:** Duplicates the primary monitor to the monitor which connects with the USB 3.0 Docking Station
- **Off:** Turns off the USB 3.0 Docking Station
- **Optimize for Video:** Optimize the video quality when playing back. Text may appear less clear when enabling
- **Fit to TV:** Adjusts the size of the desktop on the TV. Note: This function works only when one display is connected