

TW100-S4W1CA

**DSL/Cable Broadband Router with 4-Port Switch
Quick Installation Guide**

**DSL/Cablu Broadband Router cu 4-Port Switch
Ghid rapid de instalare**

Version 06.18.05



TRENDnet[®]
TRENDware, USA
What's Next in Networking

Table of Contents

English	1
1. Prepare for Installation	1
2. Install Hardware	3
3. Configure the computer's TCP/IP Settings	4
4. Configure the Router	10
Româna	18
1. Pregatiti-va pentru instalare	18
2. Instalarea Hardware	20
3. Setarea TCP/IP	21
4. Configurarea Routerului	28
Troubleshooting.....	36

English QIG

1. Prepare for Installation

Thank you for purchasing the TW100-S4W1CA. This router will allow you to share your Internet connection with multiple users while its firewall protects your network from hackers.

This guide will help you set up and configure your router. Following the installation instructions should be quick and easy. If you run into problems, please refer to the Troubleshooting section or the more detailed installation procedures on the User's Guide. If you need further technical support, please visit www.trendnet.com or call by phone.

Verify Package Contents

Please make sure you have everything in the box:



Verify Equipment

Before installing the router you should have:

1. A Cable/DSL Modem with an Ethernet Port Set-up
2. A working Internet account
3. A Web Browser such as Internet Explorer (5.0 or higher) or Netscape Navigator (4.7 or higher)
4. An RJ-45 Network Cable for each computer connected to the router.
5. TCP/IP protocol installed on computer(s)
6. Computers with "Client for Microsoft Networks" installed

Collect Internet Service Provider (ISP) Information

During the installation of your router the Set-Up Wizard will ask you for specific Internet Service Provider ISP information you should have been provided from your ISP to set up your Cable or DSL connection. The information is different based on your type of Internet Connection. Please verify your Internet Connection type and ensure you have the following information:

Dynamic IP Cable Connection

Nothing required. IP address will automatically be assigned by the ISP.

Static or Fixed IP Cable Connection

Internet IP Address: _____ (eg. 215.24.24.129)

Subnet Mask: _____

Gateway IP Address: _____

Primary DNS: _____

Secondary DNS: _____

PPPoE DSL Connection

Login Name: _____

Password: _____

PPTP DSL Connection

Login Name: _____

Password: _____

2. Install Hardware

1. Turn off your Cable/DSL Modem, Router, and PC.
2. Connect one RJ-45 network cable from the Modem's Ethernet port to the Router's WAN port.
3. Connect a different RJ-45 network cable from one of the Router's LAN ports to your computer's network port.
4. Turn on your Cable/DSL modem.
5. Turn on your router.
6. Turn on your computer.



Verify Hardware Installation

Verify that the following router front panel lights are on: Power, WAN, and one LAN port. (for each computer connected to your router)

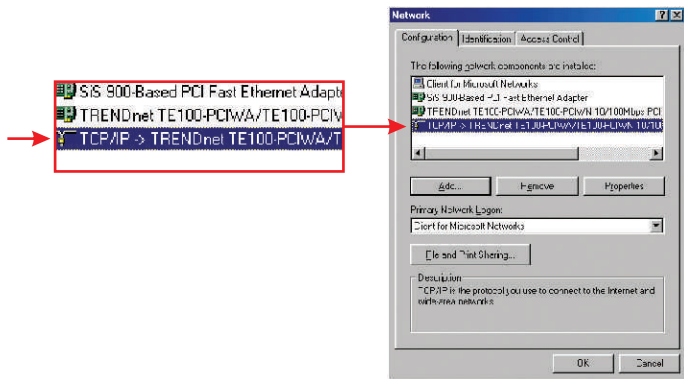


3. Configure the computer's TCP/IP Settings

This next section will ensure that your computer can communicate with your router. To do this, you will need to configure the TCP/IP settings in your Operating System (OS). Configuration instructions for Windows OS-based computers are shown below. For computers running other operating systems, see your system documentation for configuration instructions.

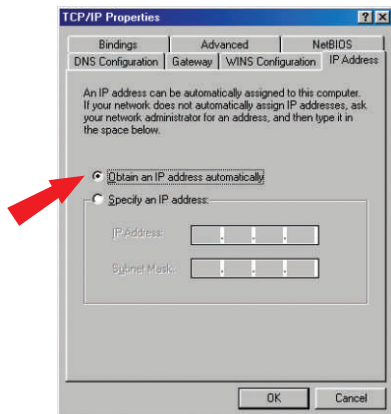
Windows 95/98/98SE/ME

1. Find **Start** Button located on Desktop.
2. Click **Start**; Click **Settings** and then click on **Control Panel**.
3. Double-Click the Network Icon and the Network Properties box will appear.
4. Under the General Configuration Tab, locate and select **TCP/IP** with the corresponding network card (such as TRENDnet TE100-PCIWN 10/100Mbps Network Adapter), and then click on the Properties button and the TCP/IP window will appear.

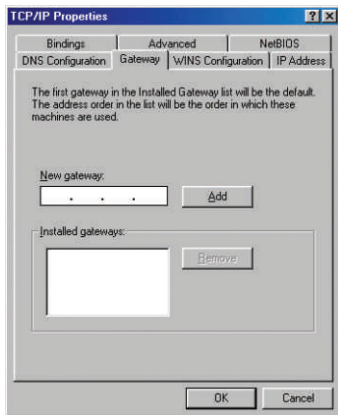


NOTE: If you have a Static IP address connection, write down the IP addresses from the following sections before you change the settings.

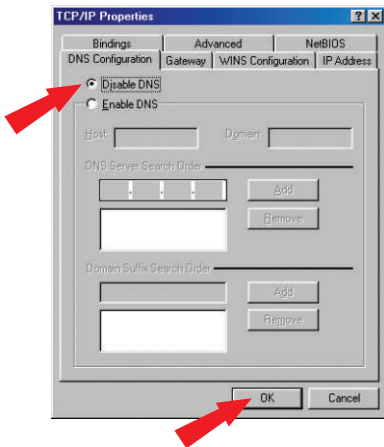
5. Under the IP Address Tab, select **Obtain an IP address automatically**.



6. Now go to the Gateway tab and make sure no Gateways are listed in the Installed Gateway's section. If there is Gateway installed, click **Remove** to remove it.



7. Go to the DNS Configuration tab and click **Disable DNS**. Then click **OK**.

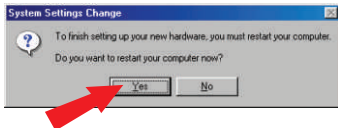


8. Click **OK** on the TCP/IP Properties box.

9. Click **OK** on the Network Box.

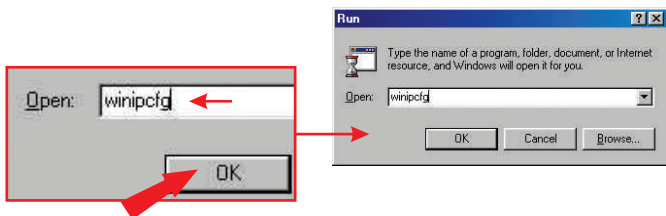
10. At this point, the installation may require files from your Windows CD-ROM. If this happens, insert Windows 98 CD-ROM into your CD-ROM drive and select CD-ROM drive to load the files.

11. After the files load, the **System Settings Change** message appears, click **Yes** to reboot your system. Your computer will now load your new TCP/IP settings.

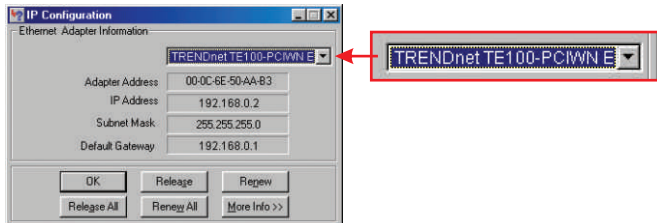


NOTE: If the message does not appear, you will need to manually restart your computer.

12. After your system reboots, click **Start**; click on **Run**. Then type **winipcfg** in the field and click **OK**.



13. The IP configuration box will appear. Choose your Network adapter from the dropdown box (such as TRENDnet TE100-PCIWN 10/100Mbps network adapter) and the current IP address information of your computer will show in the box, including the following: IP Address, Subnet Mask and Default Gateway.



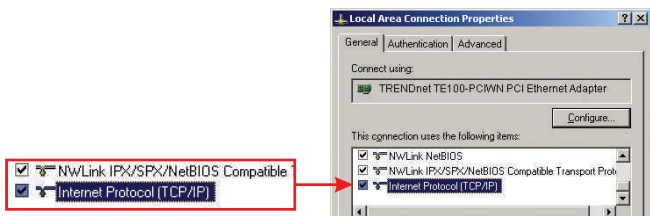
14. If your IP Address shows the following information, your computer is now successfully connected to the router:

IP Address: 192.168.1.x
Subnet Mask: 255.255.255.0
Default Gateway: 192.168.1.1

NOTE: If the information shown is incorrect, please reboot and retry the steps above.

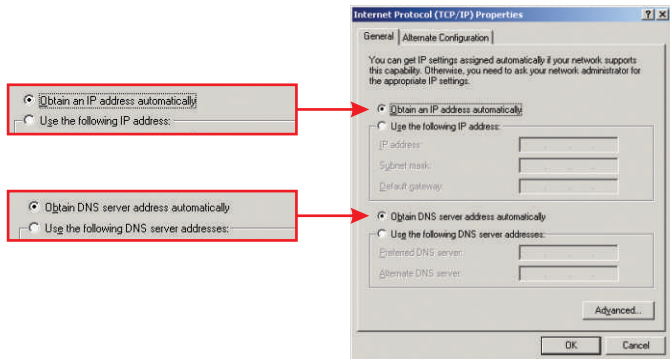
Windows 2000/XP

1. Click **Start**; click **Settings**, and click on **Control Panel**.
2. Double-click the **Network Connections** icon.
3. Right-click on the **Local Area Connection** icon, and then click on **Properties**. The Local Area Connection Properties box will appear.
4. Under the "General Configuration" Tab, locate and select **TCP/IP** and then click **Properties**. The Internet Protocol (TCP/IP) Properties box will appear.

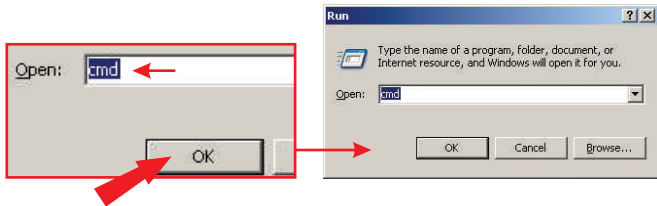


NOTE: If you have a Static IP address connection, write down the IP addresses from the following sections before you remove them from the settings.

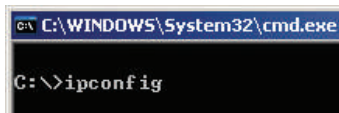
5. Click on **Obtain an IP address automatically** and **Obtain DNS Server address automatically**.



6. Click **OK**.
7. Click **Close** on the Local Area Connection Properties box.
8. Click on **Start**; click on **Run**. Then type **cmd** and click **OK**.

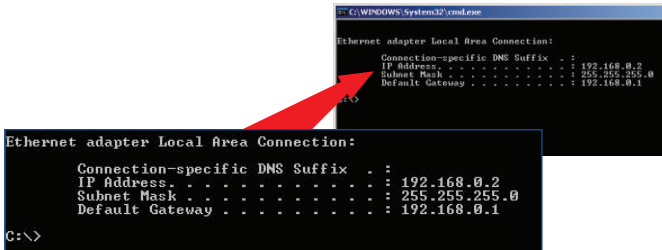


9. The Command Prompt window will appear. Type **ipconfig** at the C:\ prompt and press the **Enter** key.



10. If your IP Address shows the following information your computer is now successfully connected to the router:

IP Address: 192.168.1.x
Subnet Mask: 255.255.255.0
Default Gateway: 192.168.1.1



NOTE: If the information shown is incorrect, please reboot the computer and retry the steps above.

4. Configure the Router

The following set-up information is designed to help you to set-up your router to connect to the Internet. The set-up is different depending upon the type of Internet Connection you have with your ISP. If you're not sure what type of connection you have please contact your Internet Service Provider and collect the required information, which is located in the “**Prepare for Installation**” section at the beginning of this Quick Installation Guide.

1. Launch your Internet browser (Explorer or Netscape), and then type **http://192.168.1.1** in the address bar and hit the **Enter** key.
2. The login screen will appear; click **LOGIN** to access the **Quick Setup**.

A screenshot of a web browser dialog box titled "LOGIN PASSWORD". The dialog has a blue header bar with the title in white. Below the header, the word "Password:" is followed by a white text input field. At the bottom of the dialog, there are two buttons: "LOGIN" and "CANCEL".

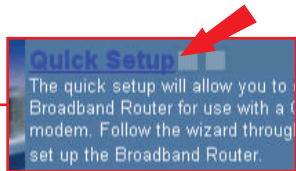
LOGIN PASSWORD

Password:

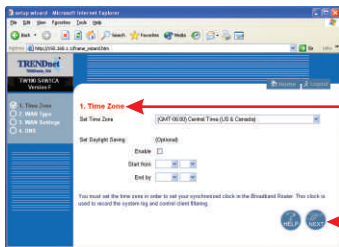
LOGIN CANCEL

NOTE: By default, no password has been set on the router.

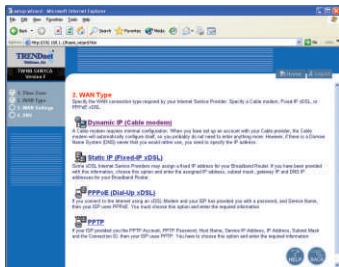
3. Click **Quick Setup** to configure your Router for Broadband Internet access.



4. Click on the dropdown menu to select the appropriate time zone. If your region runs on Daylight Savings Time, you should enable the “Set Daylight Saving” option and input the dates and times when Daylight Savings Time goes into and out-of effect. Then, click **Next**.

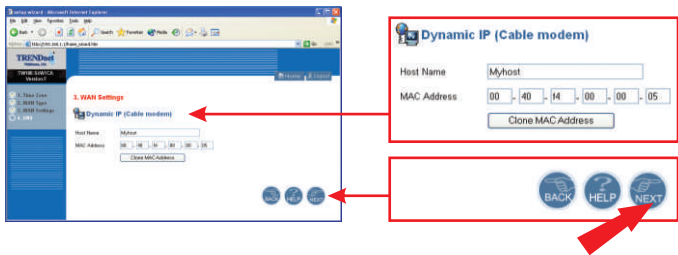


5. Select the appropriate WAN connection type by clicking on Dynamic IP, Static IP, PPPoE, or PPTP.

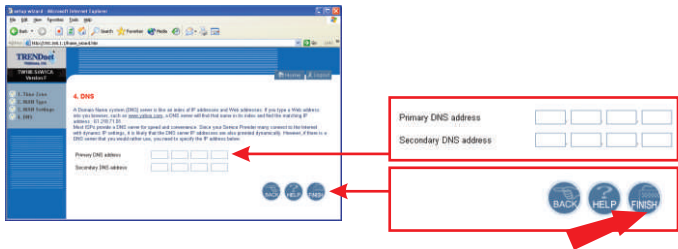


Dynamic IP

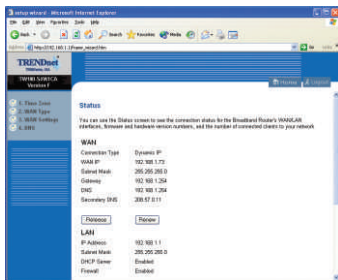
1. Specify the Host Name, (if any) and Clone the MAC Address (if required by your ISP). Click **Next**.



2. Specify Primary and Secondary DNS addresses if you wish to use DNS addresses other than your ISP-provided DNS addresses. Click **Finish**.

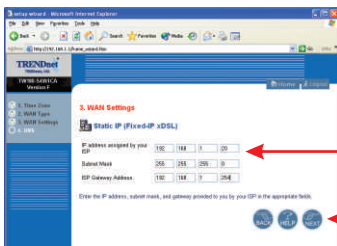


3. You may verify your Internet connection on the Status page by typing **http://www.TRENDNET.com** in your browser's address bar and hitting **Enter**. If the website appears, your router is configured properly.

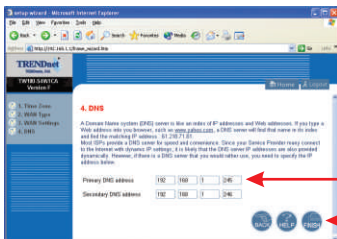


Static or Fixed IP Cable Connection

1. Enter the IP Address, Subnet Mask, and ISP Gateway Address provided by your ISP. Click **Next**.

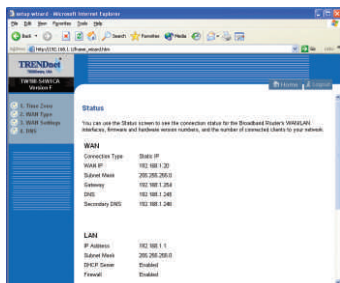


2. Specify Primary and Secondary DNS addresses if you wish to use DNS addresses other than your ISP-provided DNS addresses. Click **Finish**.



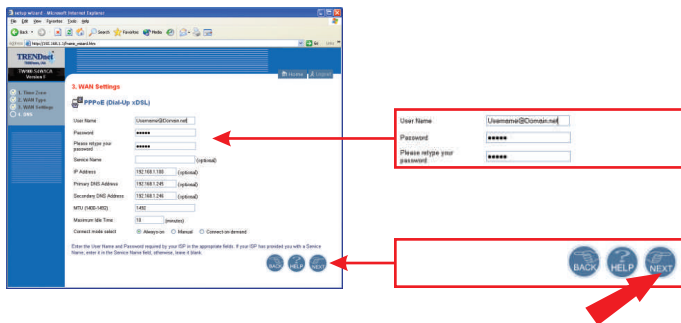
3. You may verify your Internet connection on the Status page by typing **http://www.TRENDNET.com** in your browser's address bar and hitting **Enter**. If the website appears, your router is configured properly.

NOTE: If the website does not appear, please verify your connection type with your ISP.

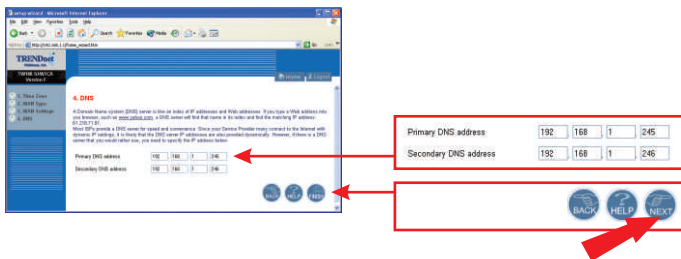


PPPoE

1. Enter your PPPoE User Name and Password, and retype your password. Then, click **Next**.

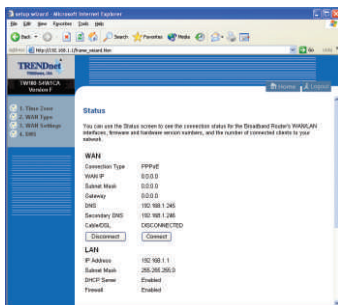


2. Specify Primary and Secondary DNS addresses if you wish to use DNS addresses other than your ISP-provided DNS addresses. Click **Finish**.



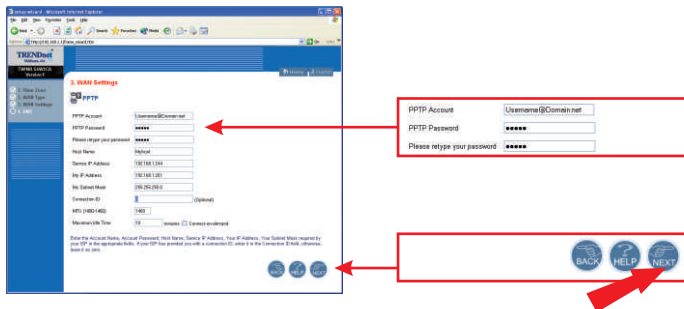
3. You may verify your Internet connection on the Status page by typing <http://www.TRENDNET.com> in your browser's address bar and hitting **Enter**. If the website appears, your router is configured properly.

NOTE: If the website does not appear, please verify your connection type with your ISP.

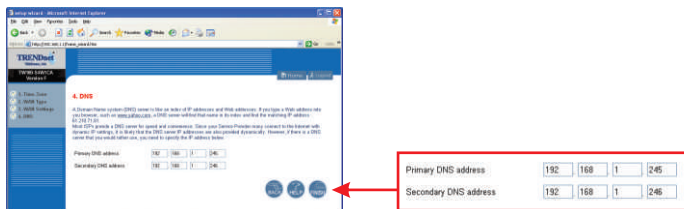


PPTP

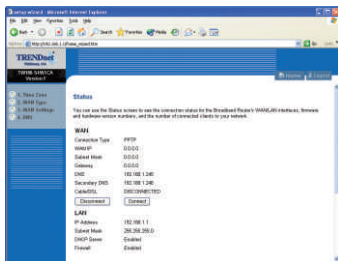
1. Enter your PPTP User Name and Password, and retype your password. Then, click **Next**.



2. Specify Primary and Secondary DNS addresses if you wish to use DNS addresses other than your ISP-provided DNS addresses. Click **Finish**.



3. You may verify your Internet connection on the Status page by typing **http://www.TRENDNET.com** in your browser's address bar and hitting **Enter**. If the website appears, your router is configured properly.



NOTE: If the website does not appear, please verify your connection type with your ISP.

For detailed information about the TW100-S4W1CA's configuration and advanced settings, please refer to the Troubleshooting section, User's Guide or TRENDnet's website www.trendnet.com.

Româna QIG

1. Pregatiti-va pentru instalare

Va multumim pentru achizitionarea TW100-S4W1CA. Acest router va va permite sa impartasiti conexiunea dvs la Internet cu mai multi utilizatori , in timp ce firewallul va apara calculatorul de hackeri.

Acest ghid va va ajuta sa setati sis a configurati routerul. Sa urmariti instructiunile de instalare ar trebui sa fie simplu si rapid. Daca aveti probleme , va rugam apelati la sectiunea Troubleshooting sau la la Ghodul de Utilizare cu proceduri de instalare mai detaliate. Daca aveti de nevoie d mai mult ajutor tehnic, va rugam sa vizitati www.trendnet.com sau apelati la telefon pentru a suna.

Verificati Continutul Pachetului

Va rugam asigurati-va in vutie, urmatoarele:



Verificati Echipamentul

Inainte sa instalati routerul, ar trebui sa aveti:

1. Un Cablu/DSL Modem cu Port Set-up Ethernet
2. Un cont de Internet
3. Un browser net cum ar fi Internet Explorer (5.0 sau mai nou) sau Netscape Navigator (4.7 sau mai nou)
4. Un Cablu de Retea RJ-45 pentru fiecare computer legat la router.
5. TCP/IP protocol instalat pe calculator / calculatoare
6. Computere cu "Client for Microsoft Networks" instalat

Colectarea Informatiilor Serviciilor Internet de la Provider

In timpul instalarii routerului , Setup Wizard-ul va va cere informatia exacta cu privire la ISP ul Providerului dvs. Informatiile sunt diferite , in functie de tipul Conexiunii la Internet. Va rugam sa verificati tipul conexiunii dvs., si asigurati-va ca ca aveti urmatoarele informatii:

Dynamic IP Cable Connection (IP-ul dynamic al Cablului de Coexiune)

Nimic necesar. Adresa IP va fi automat asigurata de catre ISP.

Static or Fixed IP Cable Connection (Cablul de Conexiune IP static sau fix)

Internet IP Address: _____ (ex. 215.24.24.129)

Subnet Mask: _____

Gateway IP Address: _____

Primary DNS: _____

Secondary DNS: _____

PPPoE DSL Connection

Login Name(ume): _____

Password(parola): _____

PPTP DSL Connection (Conexiune PPTP DSL)

Login Name(ume): _____

Password(parola): _____

2. Instalarea Hardware

1. Opriti Modemul Cablu/DSL Modem, Routerul, si PCul
2. Conectati un cablu de retea RJ-45 de la portul Ethernet al Modemului , la portul WAN al Routerului.
3. Conectati un alt cablu de retea RJ-45 de la un port LAN al Routerului la portul de retea al computerului dvs.
4. Porniti modemul Cablu/DSL modem.
5. Porniti routerul.
6. Porniti calculatorul.



Verificarea Instalarii Hardware

Verificati daca ledurile de pe panoul frontal ale routerului sunt aprinse : Power, WAN, si un port LAN (pentru fiecare computer conectat la router)

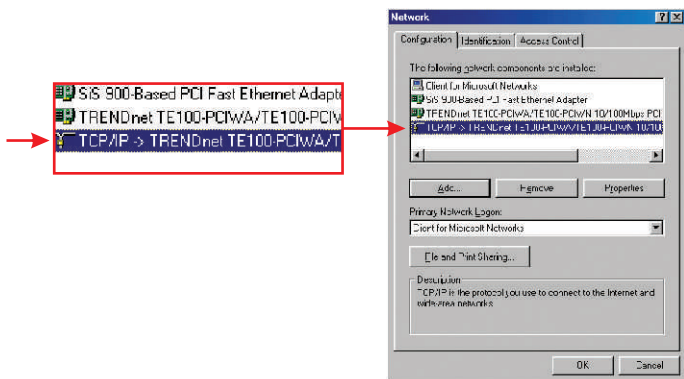


3. Setarea TCP/IP

Aceasta urmatoare sectiune va avea grija ca PCul dvs sa comunice cu routerul . Pentru acest lucru , va trebui sa configurati setarile TCP/IP din instructiunile Operating System (OS). Configuration pentru computerele cu Windows , dupa cum este specificat mai jos . Pentru calculatoarele ce se bazeaza pe alte sisteme de operare, apelati la documentatia ce v-a fost pusa la dispozitie.

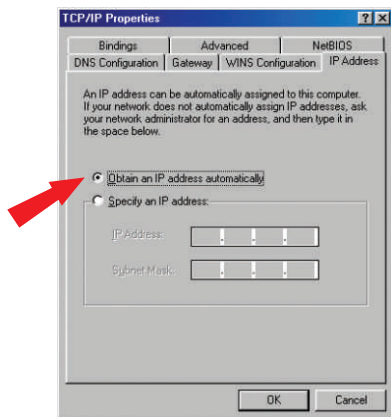
Windows 95/98/98SE/ME

1. Gasiti butonul **Start** din Desktop.
2. Dati click pe **Start**; apoi **Settings**, si **Control Panel**.
3. Dati dublu-click pe iconul **Network** si va aparea casuta Network Properties .
4. In tabul General Configuration, gasiti si selectati **TCP/IP** cu placa de etea corespunzatoare (de ex. TRENDnet TE100-PCIWA/TE100-PCIN Adapter). Apoi dati click pe **Properties** si fereastra TCP/IP va aparea.

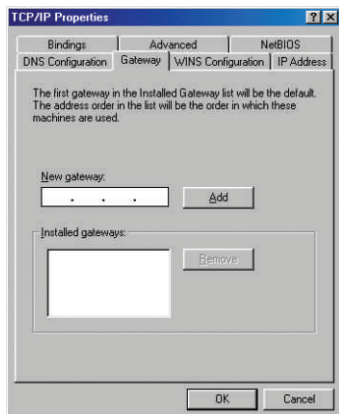


NOTA: Daca aveti o conexiune de adresa IP Statica, notati adresele de la urmatoarele sectiuni inainte de a schimba setarile.

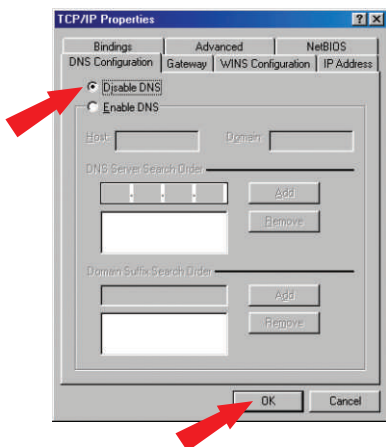
5. In tab-ul IP Address , selectati **Obtain an IP address automatically**.



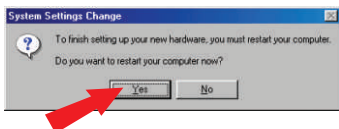
6. Acum, gasiti tab-ul Gateway si asigurati-va ca nici o Gateway (intrare) nu se gaseste in sectiunea Installed Gateways . In caz contrar, selectati Gateway-ul respective si selectati **Remove** (Indepartare).



7. Gasiti tab-ul DNS Configuration si dati click pe **Disable DNS**. Apoi dati click pe **OK**.

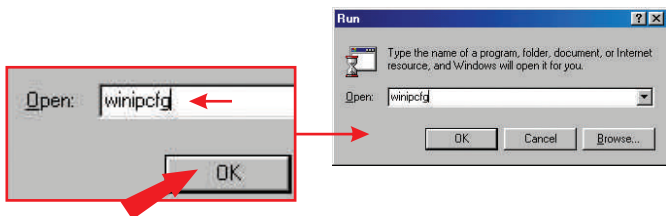


8. Dati click pe **OK** tab-ul TCP/IP Properties .
9. Dati click pe **OK** in casuta Network .
10. In acest stadiu, este posibil ca instalarea sa necesite fisiere de pe CD-ul Windows.In acest caz, introduceti in unitatea CD-ROM CD-ul Windows 98 si selectati **CD-ROM drive** pentru incarcare fișierelor respective.
11. Dupa incarcare fișierelor si aparitia mesajului "System Settings Change" dati click pe **Yes** pentru rebootare sistemului.Calculatorul dvs este gata sa incarce noile setari TCP/IP .

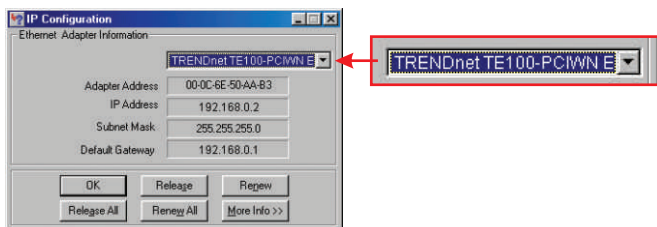


NOTA: Daca mesajul nu apare, este nevoie de restartarea manuala a calculatorului dvs.

12. După rebootarea sistemului dvs, dați click pe **Start**, iar apoi pe **Run**. Tastati apoi în câmpul respectiv "winipcfg" iar apoi dați click pe **OK**.



13. Va apărea casuta de configurare a IP-ului. Alegeți adaptorul de Rețea din casuta "dropdown" (de ex. TRENDnet TE100-PCIWN 10/100Mbps network adapter) și va apărea informația cu privire la IP-ul curent al calculatorului, inclusiv următoarele:: IP Address, Subnet Mask și Default Gateway.



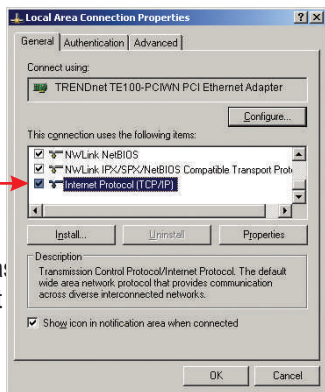
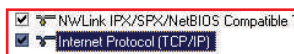
14. Dacă adresa dvs IP arată astfel, computerul dvs este conectat la router, în mod corect:

IP Address: 192.168.1.x
Subnet Mask: 255.255.255.0
Default Gateway: 192.168.1.1

NOTA: Dacă informațiile de mai sus nu corespund, vă rugăm să rebootați și să reluați pașii menționați.

Windows 2000/XP

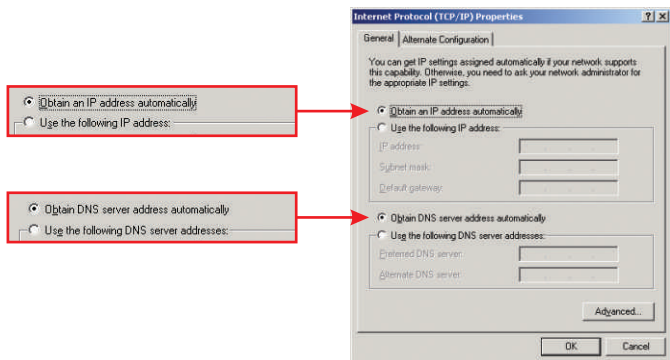
1. Dati Click pe **Start**; apoi dati click pe **Settings**, iar apoi pe **Control Panel**.
2. Dati dublu click pe icon-ul **Network Connections**.
3. Dati click-dreapta pe icon-ul **Local Area Connection** iar apoi pe **Properties**.
Va aparea casuta Local Area Connection Properties .
4. In tab-ul "General Configuration", gasiti si selectati **TCP/IP**, si dati click pe **Properties**. Va aparea casuta Internet Protocol (TCP/IP) Properties .



4. In tab-ul "General Configuration", gasiti si selectati **TCP/IP**, si dati click pe **Properties**. Va aparea casuta Internet Protocol (TCP/IP) Properties .

NOTA: Daca aveti o conexiune de adresa IP Statica, notati adresele IP de la urmatoarele sectiuni inainte de a le schimba.

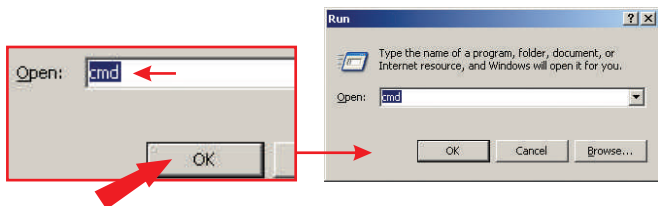
5. Dati click pe **Obtain an IP address automatically** si **Obtain DNS Server address automatically**.



6. Dati Click pe **OK**.

7. Dati click pe **Close** din casuta Local Area Connection Properties .

8. Dati Click pe **Start**, iar apoi pe **Run**. Tastati **cmd** si dati click pe **OK**.



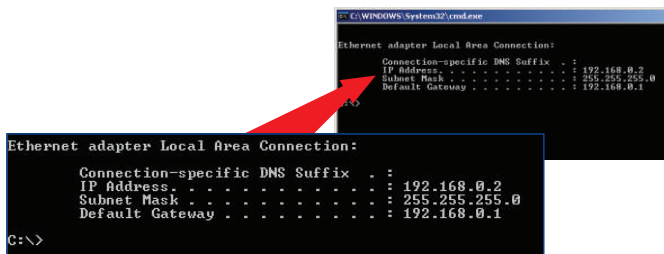
9. Va aparea fereastra Command Prompt. Tastati **ipconfig** de la C:\prompt, si apasati tasta **Enter**.

```
C:\WINDOWS\System32\cmd.exe

C:\>ipconfig
```

10. Daca adresa dvs IP arata in felul urmatoar, calculatorul dvs este conectat la router in mod corect:

IP Address: 192.168.1.x
Subnet Mask: 255.255.255.0
Default Gateway: 192.168.1.1



```
C:\WINDOWS\system32\cmd.exe

Ethernet adapter Local Area Connection:

    Connection-specific DNS Suffix  . : 
    IP Address. . . . .               : 192.168.0.2
    Subnet Mask . . . . .             : 255.255.255.0
    Default Gateway . . . . .         : 192.168.0.1

C:\>

Ethernet adapter Local Area Connection:

    Connection-specific DNS Suffix  . : 
    IP Address. . . . .               : 192.168.0.2
    Subnet Mask . . . . .             : 255.255.255.0
    Default Gateway . . . . .         : 192.168.0.1

C:\>
```

NOTA: Daca informatiile nu corespund celor de mai sus, va rugam reboati si refaceti pasii mentionati.

4. Configurarea Routerului

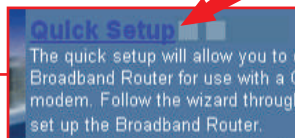
Urmatoarele informatii sunt menite sa va ajute in starea routerului dvs, pentru conectarea la internet. Pentru a incepe, trebuie sa stiti tipul de conexiune la internet de care dispuneti. Daca nu sunteti sigur, va rugam contactati Privederul dvs de Internet si culegeti informatiile respective , ce se gasesc in sectiunea "Prepare for Installation" de la inceputul acestui Ghid.

1. Accesati browserul dvs web (Explorer sau Netscape), si tastati **http://192.168.1.1** in bara de adrese , iar apoi apasati tasta **Enter** .
2. Va aparea ecranul login (conectare) .Dati click pe **LOGIN** pentru a accesa **Quick Setup**.



NOTA: Initial , routerul nu are parola setatar.

3. Dati click pe **Quick Setup** pentru a configura accesul routerului Broadband Internet .



4. Dati click pe meniul dropdown pentru a selecta ora convenita. Daca regiunea dvs se bazeaza pe Daylight Savings Time, ar trebui sa bifati optiunea “Set Daylight Saving” si sa setati data si ora cand setarile initiale isi “pierd” efectul. Apoi dati click pe **Next**.

1. Time Zone

Set Time Zone (GMT-06:00)

Set Daylight Saving (Optional)

synchronized clock in the Broadband Router. This clock is filtering.

HELP NEXT

5. Selectati conexiunea WAN potrivita dand click pe Dynamic IP, Static IP, PPPoE, sau PPTP.

2. WAN Type

Select the WAN connection type supported by your Internet Service Provider. Specify a Cable modem, Fixed IP (DSL), or Dynamic IP.

Dynamic IP (Cable modem)

This is the most common dynamic configuration. When you have set up an account with your Cable provider, the Cable modem will automatically connect to the Internet. You may also need to enter your username and password. If there is a connection error (Dial) occur that you cannot solve, you need to specify the IP address.

Static IP (Fixed IP/DSL)

Static IP is a fixed IP address. You may also need to specify a Fixed IP address for your Broadband Router. If you have been provided with the information, please fill in the information and click the appropriate address, subnet mask, gateway IP and DNS IP information on the Broadband Router.

PPPoE (Dial-up DSL)

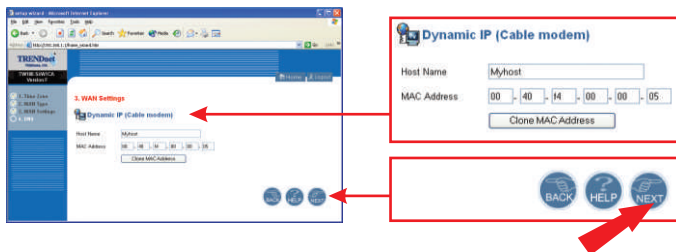
This is used to the Internet only in DSL. Modem and your ISP has provided you with a username and Service Name, but you still use PPPoE. You must choose this option and enter the required information.

PPTP

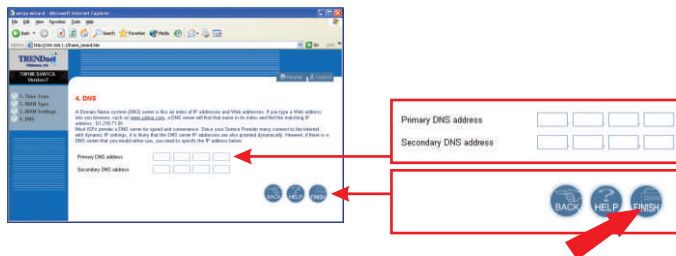
Some ISP provided you the PPPoE Account, PPTP Password, Host Name, Default IP Address, Subnet Mask and the Connection ID when your ISP uses PPTP. You must choose this option and enter the required information.

Dynamic IP

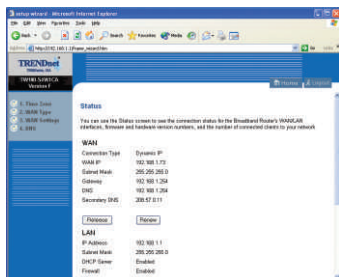
1. Specificati Host Name (Numele-Gazda), (daca exista) si "Clonati" and Clone adresa Mac (daca va este precizat de catre ISP-ul dvs). Dati Click pe **Next**.



2. Specificati adresele DNS Primare si Secundare daca doriti sa folositi alte adrese DNS decat cele asigurate de catre ISP-ul dvs. Dati click pe **Finish**.

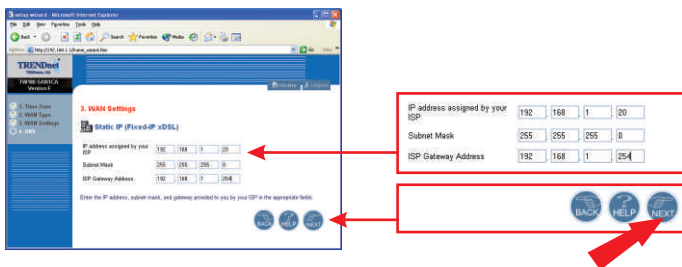


3. Va puteti verifica conexiunea prin pagina de satus, tastand **http://www.TRENDNET.com** in bara de adrese a browserului dvs de web, iar apoi apasand Enter. Daca site-ul apare, routerul dvs este configurat in mod corect.

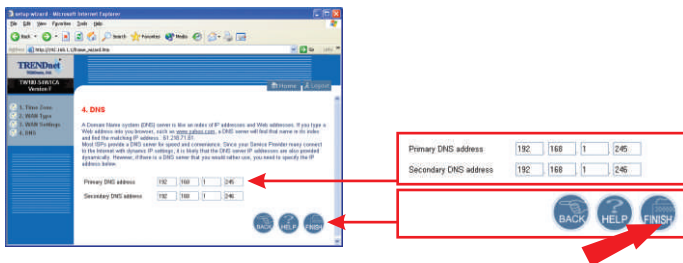


Cablul de Conexiune IP Static sau Fix

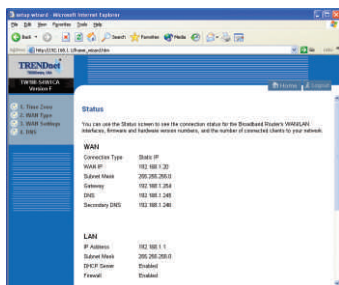
1. Tastati Adresa IP , Subnet Mask, si ISP Gateway Address,(informatii de la ISP-ul dvs)Dati click pe **Next**.



2. Specificati adresele dvs IDN Primare si Secundare daca doriti sa folositi alte adrese DNS decat cele asigurate de ISP-ul dvs. Dati click pe **Finish**.



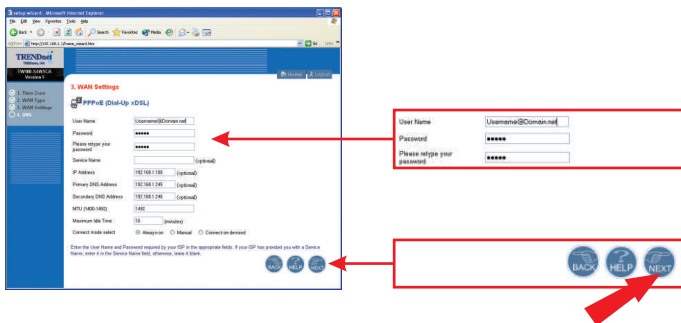
3. Puteti verifica conexiunea dvs la situl de Status <http://www.TRENDNET.com>, si apasand tasta Enter. Daca site-ul apare, routerul dvs este configurat in mod corect.



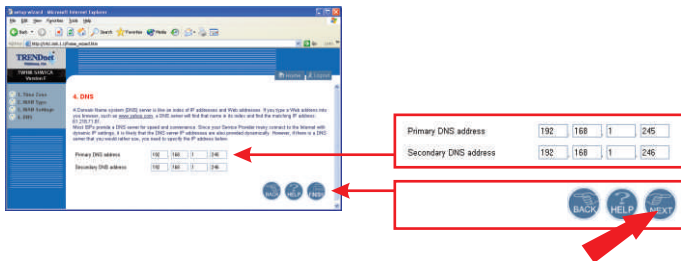
NOTA: Daca site-ul nu apare , va rugam verificati tipul conexiunii cu ajutorul ISP-ului dvs.

PPPoE

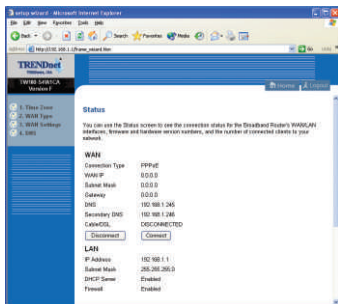
1. Tastati PPPoE User Name-ul dvs si Parola, si retastati parola. Apoi dati click pe **Next**.



2. Specificati adresele DNS Primare si Secundare daca doriti sa folositi altele decat cele asigurate de ISP-ul dvs. Dati apoi click pe **Finish**.



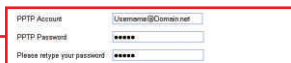
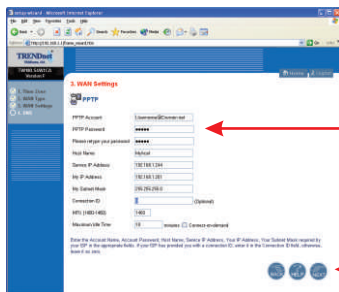
3. Va puteti verifica Conexiunea tastand **http://www.TRENDNET.com** si apasnd tasta Enter. Daca site-ul apare, routerul dvs este conectat in mod corect.



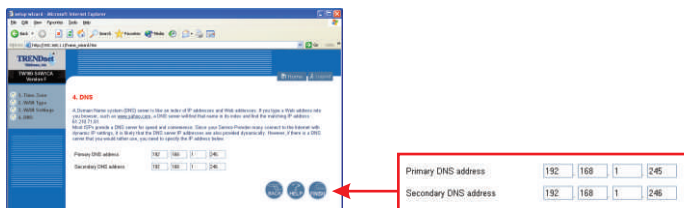
NOTA: Daca site-ul nu apare , va rugam verificati tipul conexiunii cu ajutorul ISP-ului dvs.

PPTP

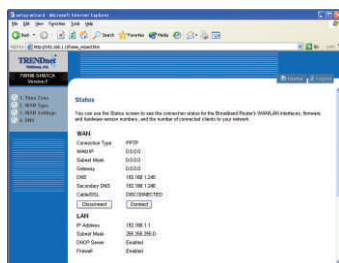
1. Tastati PPTP User Name-ul dvs si Parola si retastati Parola, iar apoi dai click pe **Next**.



2. Specificati adresele DNS Primare si Secundare daca doriti sa folositi altele decat cele asigurate de ISP-ul dvs. Dati click pe **Finish**.



3. Puteti verifica conexiunea dvs tastand <http://www.TRENDNET.com> in bara de adrese a browser-ului dvs si apasand tasta Enter. Daca site-ul apare, routerul dvs este configurat in mod corect.



NOTA: Daca site-ul nu apare , va rugam verificati tipul conexiunii cu ajutorul ISP-ului dvs.

Penru detalii si configuratii avansate despre setarea TW100-S4W1CA, va rugam apelati la sectiunea Troubleshooting sau la site-ul www.trendnet.com.

Troubleshooting

Q1. When I attempt to access <http://192.168.1.1> in my web browser, an error message tells me "The page cannot be displayed." How can I get into the TW100-S4W1CA web configuration page?

A1. Verify your hardware and TCP/IP settings again by reviewing the instructions in sections 1-3. Also, make sure the Power, WAN, and on the LAN lights on the Router's front panel are on. Then, try accessing <http://192.168.1.1> again using your web browser.

Q2. I don't know what my Internet Connection Type I have. How do I find out?

A2. You can simply contact your Internet Service Provider's (ISP) Customer Service or Technical Support Department for the correct information.

Q3. I set up my Internet Connection Type and saved it, but I still cannot access the Internet with my PC. What should I do?

A3. Turn off your Cable/DSL modem, Router, PC. Then, turn on the Cable/DSL modem and wait for 60 seconds. Next, turn on the router, wait 60 seconds, and turn on your PC. This simple power cycle normally helps the router connect to your Internet connection. Then, try accessing a website such as <http://www.trendnet.com> with your web browser.

NOTE: For more detailed information about the TW100-S4W1CA's configuration and advanced settings, please refer to the User's Guide.

If you still encounter problems settings up the router, we can help. Please have your Internet account information ready, (ISP, Account Type) and contact us using the contact information below.

Certifications

This equipment has been tested and found to comply with FCC and CE Rules. Operation is subject to the following two conditions:

- (1) This device may not cause harmful interference.
- (2) This device must accept any interference received.
Including interference that may cause undesired operation.





Product Warranty Registration

Please take a moment to register your product online.
Go to TRENDware's website at <http://www.TRENDNET.com>

TRENDnet Technical Support

US/Canada Support Center

Contact

Telephone: 1(310) 626-6252

Fax: 1(310) 626-6267

Email: support@trendnet.com

Tech Support Hours

7:30am - 6:00pm Pacific Standard Time

Monday - Friday

European Support Center

Contact**Telephone**

Deutsch : +49 (0) 6331 / 268-460

Français : +49 (0) 6331 / 268-461

Español : +49 (0) 6331 / 268-462

English : +49 (0) 6331 / 268-463

Italiano : +49 (0) 6331 / 268-464

Dutch : +49 (0) 6331 / 268-465

Fax: +49 (0) 6331 / 268-466

Tech Support Hours

8:00am - 6:00pm Middle European Time

Monday - Friday

TRENDware International, Inc.
3135 Kashiwa Street. Torrance, CA 90505
<http://www.TRENDNET.com>