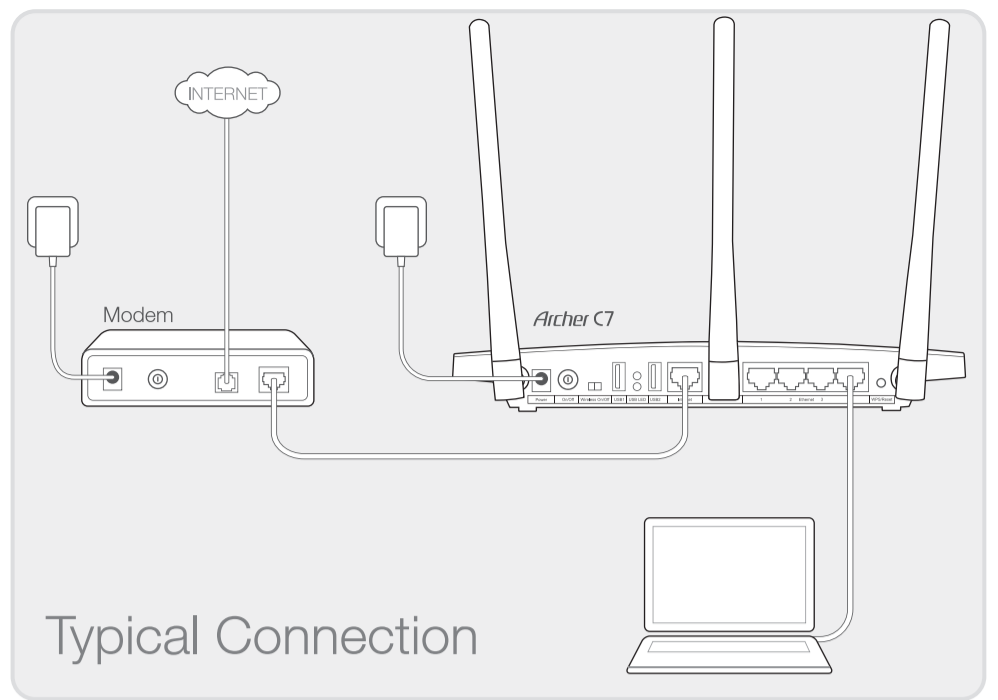


Quick Installation Guide

AC1750 Wireless
Dual Band Gigabit Router
Archer C7



1. Connecting the Hardware

1 **Power off** the modem, and remove the backup battery if any.

2 Connect the modem to the Internet port on your router using an Ethernet cable.

3 **Power on** the modem, wait for 2 minutes and then **power on** the router.

4 Check the following LED lights to ensure the hardware connection is correct.

Note: If the 2.4G and 5G LEDs are not flashing, please verify that the wireless switch on the rear panel of the router is on.

Note: If your Internet comes via an Ethernet cable from the wall instead of any DSL/Cable/Satellite modems, please connect the Ethernet cable directly to the router's Internet port.

2. Configuring the Router

Method 1 Via Web Browser

1 Connect your computer to the router (Wired or Wireless).

• Wired

• Wireless

Connect wirelessly by using the default network name (SSID) and password on the product label printed on the bottom of the router.

2 Open a web browser on the computer and configure the router according to the following main clues.

a Enter **http://tplinklogin.net** in the address bar.

Type in **admin** for both the user name and password and click **OK**.

Note: If the login window does not appear, please refer to FAQ->Q1.

b Select your Connection Type and if you are unsure what your connection type is, select **Auto-Detect**. Click **Next** and follow the instruction to continue.

Note: If an Internet connection is already established, the Quick Setup wizard will bypass Step **b** and go to Step **c**.

c Choose the frequency you prefer and then click **Next**.

d Click **Next** to continue.

You may rename your 2.4GHz/5GHz wireless network name and create your own password. Once done, the wireless connection will disconnect automatically, and you must then sign in with the new names/passwords to regain access to the Internet.

e Click **Finish** to complete the setup.

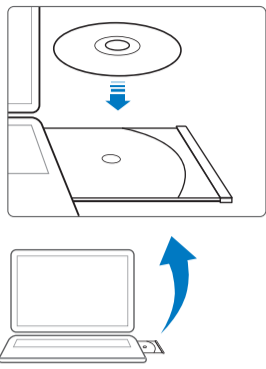
Enjoy!

Now your wired and wireless devices can connect to the Internet!

Method 2 Via CD Setup Wizard

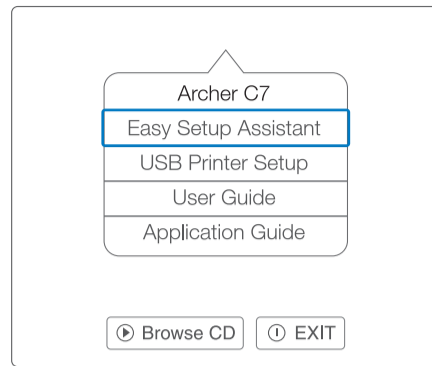
Note: If you are using a computer that cannot run the mini CD, please refer to Method 1 for configuration.

- 1 Insert the TP-LINK Resource CD into the CD-ROM drive.

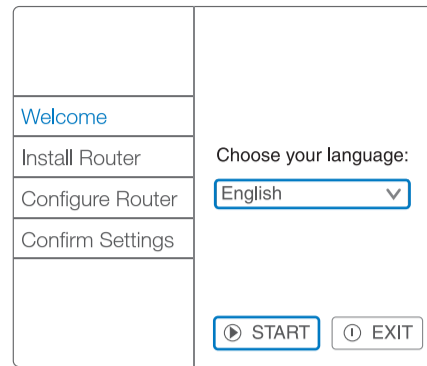


- 2 Select Archer C7 and then click **Easy Setup Assistant**.

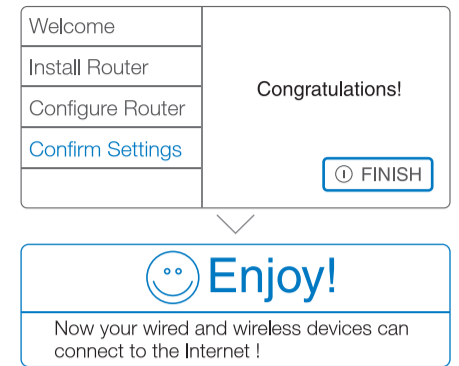
Note: If the main page does not display on your computer, browse the files on the CD and double click Autorun.exe.



- 3 Choose your language, click **START** and the Easy Setup Assistant will guide you through the setup process.



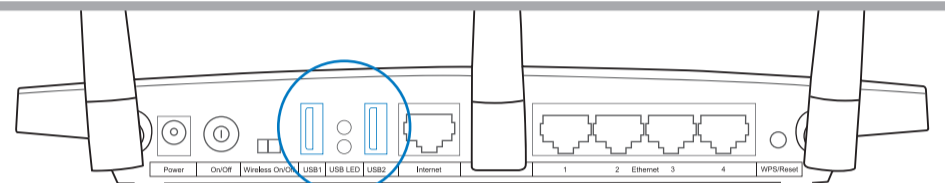
- 4 Click **FINISH** to complete the setup.



USB Features

The dual USB ports can be used for media sharing, storage sharing and print sharing across your local network. You can also set up the FTP server to access your files remotely by connecting to the Internet.

Note: To learn more about the USB features, please visit <http://tp-link.com/app/usb>, retrieve Resource CD or simply scan the QR code.



Twin USB sharing ports



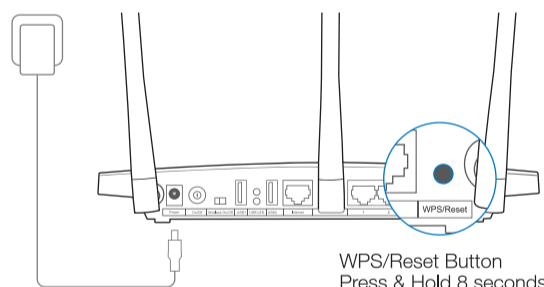
Frequently Asked Questions (FAQ)

Q1. What can I do if the login window does not appear?

- A1. If the computer is set to a static or fixed IP address, change it to obtain an IP address automatically from the router.
 A2. Verify <http://tplinklogin.net> is correctly entered in the web browser. Alternatively, enter <http://192.168.0.1> in the web browser and press Enter.
 A3. Use another web browser and try again.
 A4. Reboot your router and try again.
 A5. Disable the network adapter used currently then enable it again.

Q3. How do I restore the router to its factory default settings?

- A1. With the router in the Power On mode, press and hold down the WPS/Reset Button on the rear panel of the router for approximately 8 seconds.
 A2. Log in Web Management page of the router, and go to System tools->Factory Defaults, click Restore, then wait until the progress bar loading finished.



Q2. What can I do if I cannot access the Internet?

- A1. Check if the Internet is working properly by connecting a computer directly to the modem via Ethernet. If not, contact your Internet Service Provider.
 A2. Open a web browser, enter <http://tplinklogin.net> and try to set up again.
 A3. Reboot your router and try again.

Note: For cable modem users, reboot the modem first. If the problem still exists, go to Network>MAC Clone, then click Clone MAC Address and Save.



Q4. What can I do if I forget my password?

- Web Management page password:**

A. Restore the router to its factory default settings and then use the default User Name 'admin' and Password 'admin' to log in.
- Wireless Network password:**

A1. The factory default password can be found on the product label printed on the bottom of the router.
 A2. If you have changed your password, log in to the router's Web Management page, go to Wireless>Wireless Security to obtain or reset your password.

Note: If your questions are not answered here, please refer to <http://www.tp-link.com/en/support/faq> and click Contact Technical Support for further assistance.

LED Indicators

Name	Status	Indication
(Power)	Off On	Power is off. Power is on.
(System)	Off On Flashing	The router has a system error. The router is initializing or maybe has a system error. The router is working properly.
(Wireless 2.4GHz)	Off Flashing	The wireless 2.4GHz band is disabled. The wireless 2.4GHz band is working properly.
(Wireless 5GHz)	Off Flashing	The wireless 5GHz band is disabled. The wireless 5GHz band is working properly.
(Ethernet)	Off On	No device is connected to the corresponding port. Device connected to the corresponding port but no activity.
(Internet)	Flashing	Device connected to the corresponding port and active.
(WPS)	On/Off Slow Flash	It turns on when a wireless device has been successfully connected to the network via WPS. After about 5 minutes, the WPS LED will turn off. A wireless device is trying to connect to the network via WPS. This process may take up to 2 minutes.
(USB on the rear panel)	Off On	No USB device is plugged in to the USB port. USB device(s) plugged in to the USB port.