

Register your product online at

[www.scosche.com/register](http://www.scosche.com/register)



# MAGICMOUNT MAGWDM/MAGWDMI

## MAGNETIC FLEX MOUNT FOR MOBILE DEVICES & SMALL TABLETS (8 INCHES OR LESS)

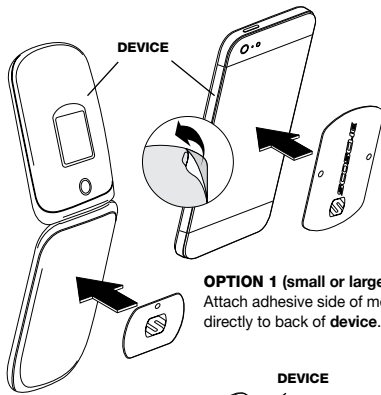
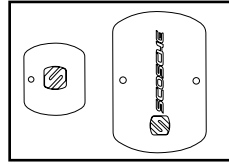
### PARTS INCLUDED

- (1) Magnetic mount with suction cup mount and flexible neck
- (1) Small metal plate (1) Large metal plate
- (1) 3M mounting disc for suction cup mount

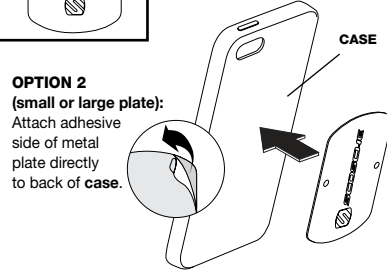
### READ INSTRUCTIONS COMPLETELY BEFORE INSTALLING THIS MOUNT KIT. WARNING: Use caution whenever removing or handling plastic parts of any vehicle. Unnecessary force or pressure can cause pieces to crack or break. Please use a plastic card to remove the metal plates. Remove adhesive residue with a non-abrasive cleaner.

## 1 MOUNTING THE METAL PLATE

**Note:** This item is not to be used with any Qi Wireless Charging products as the metal plates can cause extreme heat that can cause burns and/or damage the device.



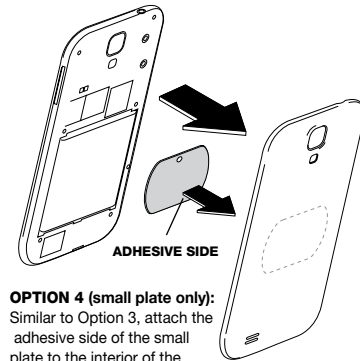
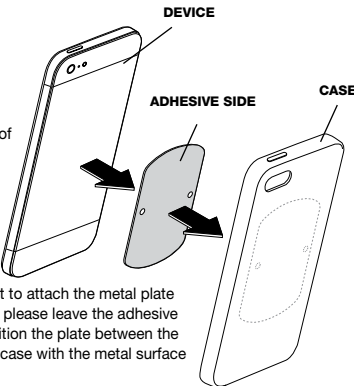
**OPTION 1 (small or large plate):**  
Attach adhesive side of metal plate directly to back of device.



**OPTION 2 (small or large plate):**  
Attach adhesive side of metal plate directly to back of case.

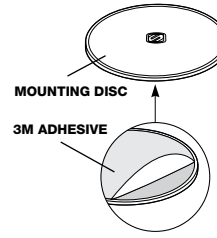
**OPTION 3 (large plate only):**  
Attach adhesive side of metal plate to interior of case, between device and inside of case. Plate will adhere to magnetic mount through rear panel of case.

**NOTE:** If choosing not to attach the metal plate to the device or case, please leave the adhesive backing in place. Position the plate between the device and interior of case with the metal surface facing the case.

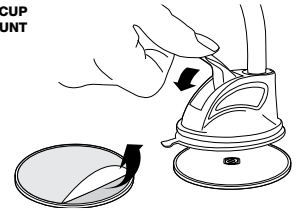
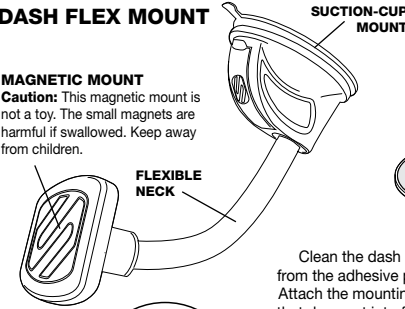


**OPTION 4 (small plate only):**  
Similar to Option 3, attach the adhesive side of the small plate to the interior of the device's rear battery compartment cover (if space and design permit). Plate will adhere to magnetic mount through the rear battery cover. For more information please visit [www.scosche.com/magmount](http://www.scosche.com/magmount).

## 2 WINDSHIELD/DASH FLEX MOUNT



**MAGNETIC MOUNT**  
**Caution:** This magnetic mount is not a toy. The small magnets are harmful if swallowed. Keep away from children.

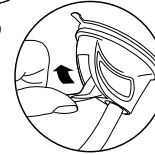


### USING THE MOUNTING DISC

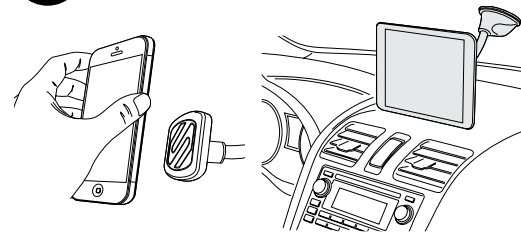
Clean the dash of dust and debris. Remove the backing from the adhesive pad on the bottom of the mounting disc. Attach the mounting disc to an area of the dash or console that does not interfere with the operation of the vehicle. **Do not mount near or over airbag deployment area.** Attach the suction cup mount to the mounting disc and lock the suction lever to secure the mount.

### MOUNTING TO THE WINDSHIELD

Make sure the area of the windshield is clean and DOES NOT obstruct your view of traffic. Position the suction cup on the surface of the windshield and hold the base firmly as you close the lever and lock the base in position.



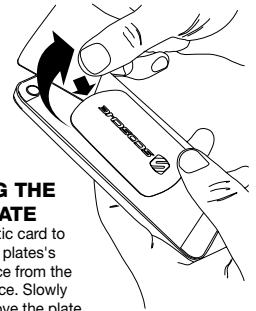
## 3 ATTACH DEVICE TO MAGNETIC MOUNT



## 4

### REMOVING THE METAL PLATE

Use a thin plastic card to carefully lift the plates's adhesive surface from the mounting surface. Slowly lift up and remove the plate.



### IMPORTANT

**NOTICE TO DRIVERS IN CALIFORNIA AND MINNESOTA:** State law prohibits drivers in California and Minnesota from using suction mounts on their windshields while operating motor vehicles. Other state or local laws may also prohibit drivers from using suction cups on their windshields. Please, check with your state law enforcement for applicable regulations regarding windshield mounting. Other Scosche dashboard or friction mounting options should be used. Scosche does not take any responsibility for any fines, penalties, or damages that may be incurred as a result of disregarding this notice. (See California Vehicle Code Section 26708(a); Minnesota Statutes 2005, Section 169.71)

### LIMITED WARRANTY

Scosche Industries Inc. warrants this product to be free from defects in material and workmanship for a period of 1 year from purchase. This Scosche product is sold with the understanding that the purchaser has independently determined the suitability of this product. This warranty is offered to the original purchaser of the product only. This warranty does not cover the product if physically damaged, subject to negligence or misuse, abuse, alteration, accident, or an act of GOD. This warranty does not apply to product which has water or physically damaged by accident or which has been misused, disassembled or altered.

The original dated sales slip or proof of purchase will establish warranty eligibility. If the product should prove defective within the warranty period, return the product with proof of purchase to Scosche Industries Inc. Scosche, at its option, will replace or repair the product free of charge and return the product postage paid.

In no event shall Scosche Industries, Inc. be responsible for claims beyond the replacement value of the defective product, or in any way be liable or responsible for consequential or incidental damages. No express warranties and no implied warranties, whether for fitness or any particular use or otherwise, except as set forth above (which is made expressly in lieu of all other warranties) shall apply to products sold by Scosche. Scosche Industries cannot be held responsible for discrepancies/inconsistencies that may occur due to automotive manufacturing changes or option.

### For All Australian Sales

This document details the terms and conditions of the warranty provided with this product. Please disregard any other representations contained on this product's packaging or provided with this product which constitute or appear to constitute a warranty.

This warranty is offered by Scosche Industries, 1550 Pacific Ave, Oxnard, CA 93033 United States. We can be called on 1 (805) 486 4450 or emailed at [sales@scosche.com](mailto:sales@scosche.com)

Subject to the exclusions and limitations set out below, we warrant to you that if you purchase a product directly from us, or from any of our authorized resellers, that it will not contain defects which are a result of faulty manufacturer workmanship or materials. This warranty subsists for 1 year from the date of purchase.

Subject to any rights you have under the Australian Consumer Law, we will not be liable for defects which are a result of damage or loss caused by factors beyond our control, any product which has not been maintained according to any care or maintenance instructions provided with the product, any alterations to a product which are not performed by us, or damage or defects caused to the product due to unusual or non-recommended use. We will not be liable for any special, indirect, consequential or economic loss or damage or loss of profits whatsoever suffered by you or any other person resulting from any act or omission by us.

Our total liability in respect of this Warranty against Defects is limited to the replacement of the goods.

Any claim made under this warranty must be made by contacting Scosche Industries. Scosche will then put you in touch with the closest company to you that will cover warranties. All Returns of defective product will be sent at your expense, to be exchanged for a replacement.

This Warranty against Defects is provided in addition to other rights and remedies that you may have at law. Our goods come with guarantees that cannot be excluded under the Australian Consumer Law. You are entitled to a replacement or refund for a major failure and for compensation for any reasonably foreseeable loss or damage. You are also entitled to have the goods repaired or replaced if the goods fail to be of acceptable quality and the failure does not amount to major failure.



# IMPORTANT!

**DO NOT RETURN PRODUCT TO THE RETAILER**  
**IF YOU NEED ASSISTANCE OR REPLACEMENT PARTS**

**CALL US TOLL FREE: 1-800-621-3695 X3**  
**HOURS MON-FRI 8AM-5:30PM (PST) SATURDAY 8AM-2PM (PST)**