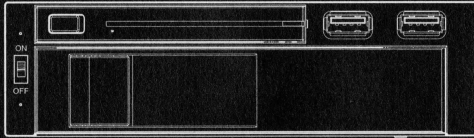


# MANUAL

SY-MRA55006



- Compatible for 2.5" HDD and 3.5" HDD
- Support USB3.0
- Hot swappable
- Anti-shock and tool free design
- NSS connector to give over 50,000 cycle hot swaps

## SY-MRA55006 Manual

### Features:

- Accommodates both 2.5" and 3.5" hard drives
- Support USB3.0
- Supports hot swaps (Need mainboard support)
- Unique anti-shock design patented tool free mechanism
- Nss connector gives over 50,000 cycle hot swaps
- LED indicator to show power and HDD activity
- HDD power switch in the front (control dual HDD)

### Specifications:

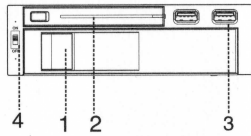
- Fit both 2.5" and 3.5" Serial ATA hard drives
- Supports hot swap(Need mainboard support)
- Supports SATA III (6.0Gb/s)
- Housing Assembly: 194(L)X148(W)X42(H)mm
- Interface: SATA /USB3.0
- Weight: 472g
- Operating Temperature: 0~55°C

### Package Content:

SY-MRA55006	1Pcs
SATA data cable	2Pcs
SATA power cable	1Pcs
User manual	1Pcs
Screws	4Pcs

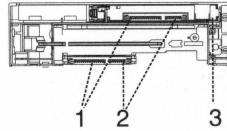
### Front panel

1. 3.5" HDD door
2. 2.5" HDD door
3. USB Ports
4. Power switch

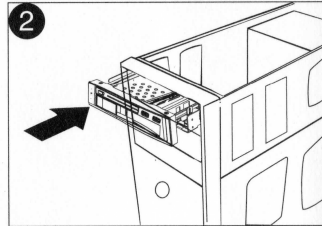
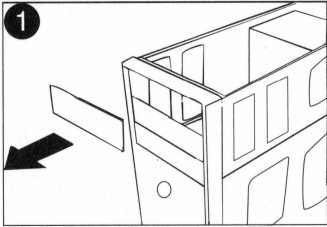


### Rear panel

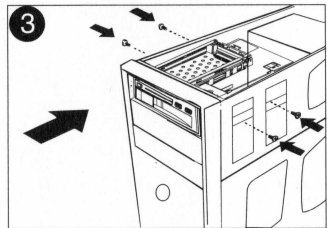
1. SATA power connector
2. SATA data connector
3. LED and Power access port



### Installation:



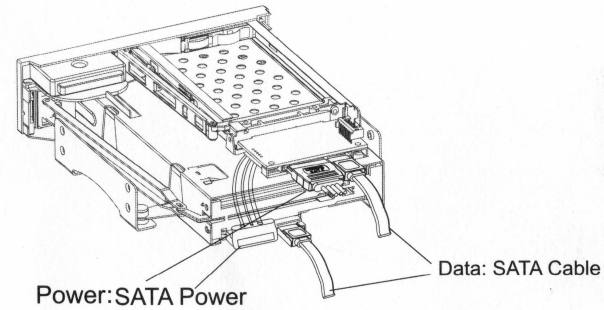
1. Remove the cover of an empty drive bay.
2. Smoothly insert SY-MRA55006 mobile rack into the bay and push it inward until its screw holes are aligned with the holes of the bay.



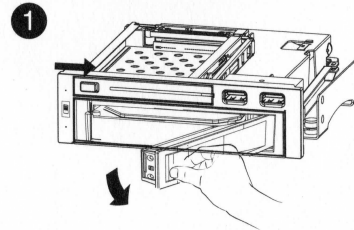
3. Fix two screws on each side, four screws in total.
4. Make sure the direction right while installing.

### Connection :

1. Connect the SATA Power cable into the SY-MRA55006 Power port (Use the Molex Power to SATA Power Connector if no SATA Power is available)
2. Insert one end of the SATA Data cable to SY-MRA55006 and the other end to the mother board SATA port.

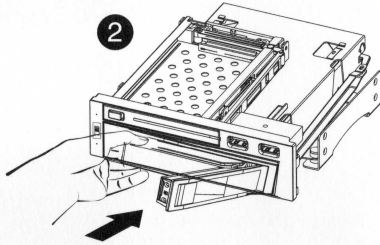


### Inserting the Hard Drive:

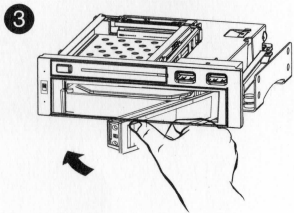


1. Release the door puller to eject the front door panel

2. Put the 2.5/3.5" HDD into the product



3. Close the front panel



- ⚠ 1. After inserting HDD and closing the front door, carefully push the tray until it is seated into position. Excessive force may damage its mechanical parts.
- 2. If the HDD is inserted backward into the tray, forcing the device may damage the SY-MRA55006.

## Removing the Hard Drive:

Smoothly open the front door. Carefully take the HDD out of the product.

⚠ The temperature of HDD may reach over 50°C. It's not hot enough to burn hand, but be careful.

- ⚠ 1. Hard drive is a precise and accurate device. Read the manual in advance and treat it carefully.
- 2. Do not eject the HDD while it is working.
- 3. Hold the HDD by its edge instead of touching the PCB on it.
- 4. Syba USA will provide maintenance for the product malfunction problems, but not be responsible for any software or data loss accident.