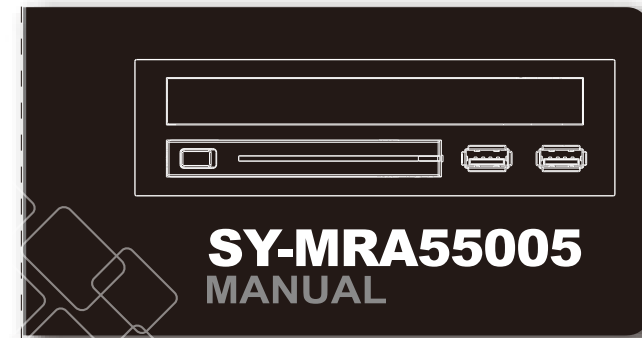


5.25" Drive Bay Adapter For Slim Optical Rom
With 2.5" SATA HDD/SDD Mobile Rack



Fits in any 5.25" drive bay
Two USB3.0 ports
Unique screwless design for hot-swapping 2.5" SATA hard drive
Accommodates 12.7mm slim optical drive

SY-MRA55005 Manual

SY-MRA55005



Features:

- Elegant plastic panel design
- Fits in any 5.25" drive bay
- Two USB3.0 ports
- Unique screwless design for hot-swapping 2.5" SATA hard drive
- Accommodates 12.7mm slim optical drive

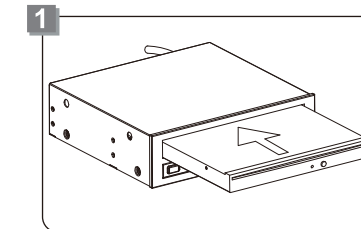
Specifications:

- Fit all 2.5" Serial ATA hard disk
- Supports hot swap
- Supports SATA III(6.0Gb/s)
- Housing Assembly: 138mm(L)x148mm(W)x42mm(H)
- Interface: SATA/USB3.0
- Weight: 484g
- Operating Temperature: 0~55

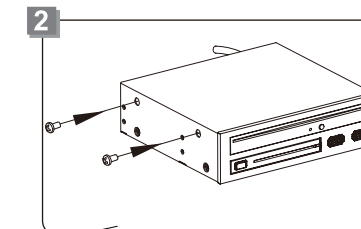
Package Content:

SY-MRA55005	1Pcs
SATA data cable	1Pcs
Fan power & access SATA cable	1Pcs
User manual	1Pcs
Screws 3x6pwn	4Pcs
Screws 2x3pm	2Pcs

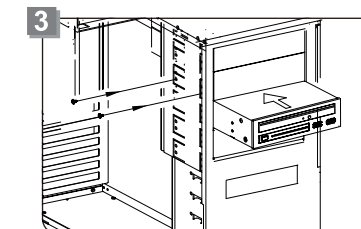
Installation :



Push 12.7mm slim optical drive into the slim drive bay.



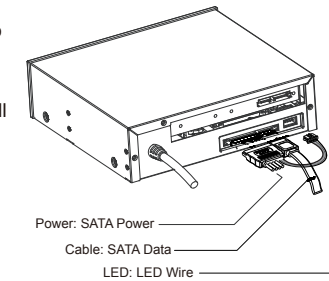
After pushing the slim optical drive into position to align with the front panel, use a magnetic screwdriver to secure two screws to the optical drive.



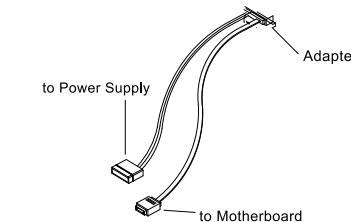
Place SY-MRA55005 into an available 5.25" bay in the chassis and secure with screws

Connection :

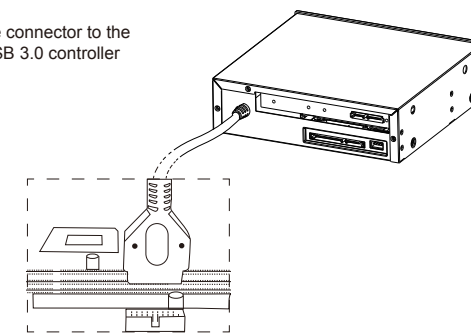
1. Connect the SATA Power cable into the SY-MRA55005 and connect the molex connector to the PC molex power plug, and the small LED wire connector to the LED port at the back of SY-MRA55005.
2. Insert one end of the SATA data cable to SY-MRA55005, another end to either the motherboard or the SATA RAID card.



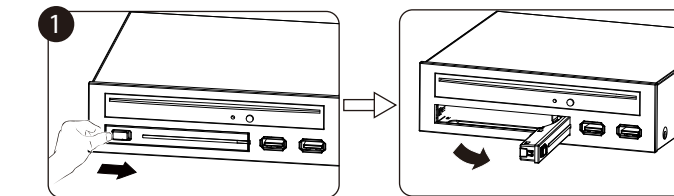
3. Plug your optical drive's signal cable (SATA or PATA) and power cable to your motherboard and power supply.



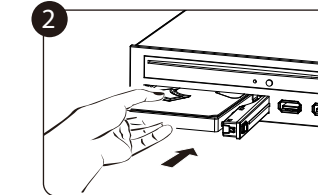
4. Plug USB3.0 cable connector to the motherboard or USB 3.0 controller header pin.



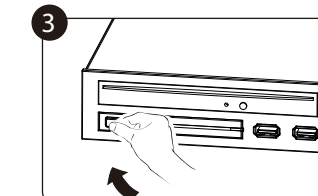
Inserting the Hard Drive:



1. Pull the key of HDD-ROM gently from left to right to eject the panel.



2. Put the 2.5" HDD into the SY-MRA55005



3. close the front panel.

- ⚠ 1. After inserting HDD and closing the front door, carefully push the tray until it is seated into position. Excessive force may damage its mechanical parts.
- 2. If the HDD is inserted backward into the tray, forcing the device may damage the SY-MRA55005.

Removing the Hard Drive:

1. Press the key of the mobile rack gently to eject the panel.
2. Open the front panel to take out the 2.5" hard drive, and close the panel firmly.

- ⚠ 1. Do not eject the HDD while it is busy
- 2. Carefully take the HDD out from SY-MRA55005. The HDD can reach temperatures over 50°C. It will not burn the fingers but should be handled with care.

Statement

The contents of user's manual are protected under copyright law. Any organization or individual can not make copy and save it in the information bank or the retrieval system by any method or form without the authorization of Syba USA. Syba USA is not responsible for any loss in the process of using the mobile rack.

