

Thank you for buying this product which will respond to your storage needs. Read carefully this manual and keep it in safe place before using this product. This external enclosure uses the technology USB v3.0. Our storage products technologies use the latest technology and have a good quality/price ratio regarding performance, data transmission rate, life span. With this external enclosure, you will be able to install SATA hard disk to backup your precious data. It supports One Touch Backup or OTB function with Windows XP/VISTA/7. It supports USB v1.1 and USB v2.0 modes. You can clone hard disks without computer.

**Package contents**

- 1 SATA 3.5" USB docking station
- 1 user's manual
- 12V/3A power supply
- 1 CD driver for OTB utility

**Technical specifications**

- Simple to install and to use, easy ejection of the hard disk
- Supports USB v1.1, USB v2.0, USB v3.0, SATA 1.5/3/6 Gb/s
- Compliant with 2.5"/3.5" SATA 1.5/3/6 Gb/s hard disks from 10 Go to 4 To
- Compatible with Hot plug: allows unplugging the device without rebooting your computer
- OTB function with Windows XP/VISTA/7 via utility
- ON/OFF switch in the rear side
- Cloning function without computer with Clone button
- 25%-50%-75%-100% copy LED indicators
- Type B USB v3.0 connector

**Minimum system required**

PC computer with USB v3.0 port  
Windows XP/VISTA/7 in 32/64 bits

**Windows driver installation**

The system will automatically detect and install the driver of the docking station. It is driverless. A new letter for the hard disk will be displayed in My computer. You can begin to use the docking station.

**Safe removal of the docking station**

To remove safely the docking station, click on the green arrow below the left taskbar.



Click on **Safely Remove Hardware**. If you cannot manage to safely remove, close **My computer**, all windows and all applications. Then click again on **Safely remove Hardware**. A window will validate under WINDOWS the possibility to safely disconnect the docking station. Click on **OK**. You can unplug the USB cable from the computer and shut down the docking station before removing.

If you pull out the docking station or unplug its power adapter cable, you can have some trouble through a warning message which can lead to a computer crash and the loss of your precious data. If you disconnect brutally the docking station, you might have a computer crash and lose your data. Moreover, the electronic parts of the docking station may be subjected to overload peaks which can lower its life span. Do not forget to remove the power supply unit.

**Hardware installation**

Insert the hard disk inside the docking station by matching SATA connectors. Do not force: a mechanism avoids a wrong insertion of the hard disk on the SATA cable. It is impossible to mislead. If you connect 2.5" hard disk unit, use the 2.5" hdd black block to fix the 2.5" hard disk unit. If you connect 3.5" hard disk unit, remove the 2.5" hdd black block from the docking station.



Connect the power supply to the mains. Connect the docking station to your computer USB port. Put the rear power switch in ON position.



### Hard disk ejection

To remove the hard disk unit, wait a while that the hard disk cools down. Take caution to hard disk, do not let it down, take care and avoid to damage it.

Caution: do not shake the hard disk once it has been inserted in the docking station in order to avoid to damage the hard disk unit. When you insert the hard disk in the docking station, check that SATA connectors match with each other, otherwise the hard disk will not be recognized.

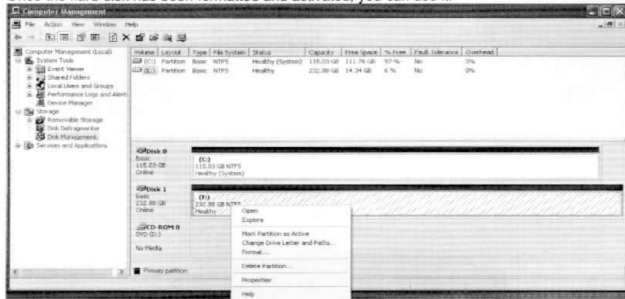
### Hard disk initialization

-For a brand new hard disk, you should proceed as follow:

If you install un-partitioned or un-formatted new drive, it does not automatically appear in "My Computer" the first time. Please follow these steps: right click on "My computer", choose "Manage" then choose "Disk management" in "Storage". The operating interface will show on the computer, Subarea Format following the operating interface.

Go to "My Computer", locate the removable disk, right click on it, and select "Format" from the drop-down list, follow the instructions to complete the formatting process.

Once the hard disk has been formatted and activated, you can use it.



By this method to format your drive it will result in a single partition in largest drive capacity, which is also highly recommended.

-For a hard disk which had already been formatted:

Go to "My computer", you should see the removable disk. Warning: backup your data before formatting the hard disk. Right click and choose **Format**, follow the instructions on screen.

After the reboot, there will be a new letter assigned to the hard disk.

If you have install the **PC Clone EX** utility, you can use **FAT32 Format** to format the hard disk.

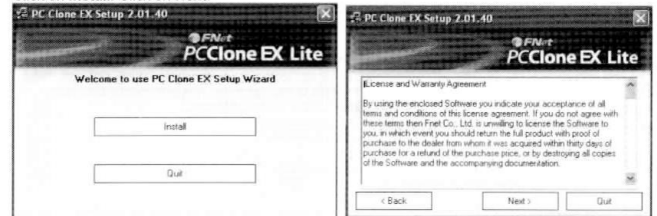


### OTB or One touch backup button function with Windows XP/VISTA/7

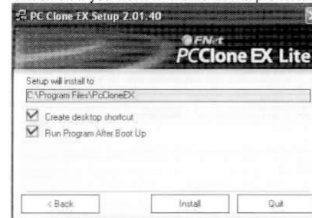
The utility **PCClONEEX\_LITE** works only with this external enclosure. It is only compliant with Windows XP/VISTA/7 in 32 and 64 bits. It does not work with Windows 8, nor with MAC OS.

Install it from the included CD by clicking on the file **Setup.exe**.

Click on **Install**. Click on **Next**.



Check off if you want to create desktop shortcut and to run program after boot up.



At the end of installation, click on **OK**.

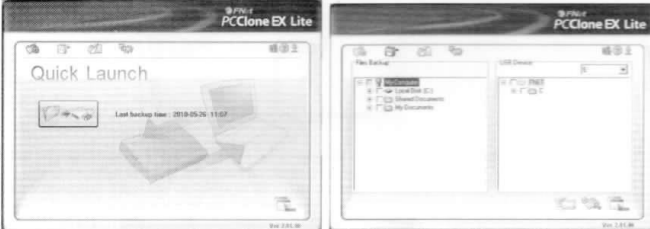
Caution: OTB function works only in USB mode with Windows XP/VISTA/7. It does not work with Windows 8 nor MAC OS.

You can launch the backup uncton from the OTB button in the rear of the enclosure or from the backup utility after configuring the backup.

In the main **PCClONEEX\_LITE** window, you have 4 window tabs: **Quick Launch**, and 3 others tabs to configure the backup.

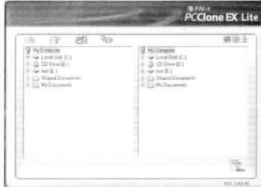
**Quick Launch** enables to launch automatically a planned backup. You have just to click on the image showing a green arrow toward a computer and the external enclosure. You have the last time of data backup.

If you have not planned a backup, you will access to the 2<sup>nd</sup> windows tab. Choose and check off the folder on the C hard disk that you want to save. A confirm window appears: click on **Start** to begin the backup. Click on **OK** once the backup is finished.

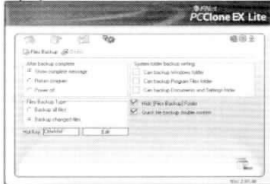


If you want to cancel backup files, uncheck the unwanted folder. By default in the right windows there will be at the level of USB device a folder named **FNET** which will contain the backup files. It is in our case the letter E.

The 3<sup>rd</sup> window tab enables to list the folder of the different devices.



You can set backup options on the 4<sup>th</sup> window tab



You can choose what to do after backup complete. You can choose the **System folder backup setting** and the **Files Backup Type**. You are able to **Hide (Files backup) Folder**. A hot key enables to launch the backup from a keyboard sequence. You can check off the **Quick file backup double confirm**.

#### Utilization

- Only use the delivered power supply. Another power supply adapter with different specifications can damage your docking station and your hard disk.
- The **R/W** Led lights in green when the docking station has HDD and is functioning. It is flashing whenever there is data transfer.
- Do not power off the docking station if you are transferring data or if the **R/W** LED is blinking.

- Connect the docking station directly to your computer USB port. If you connect to front USB port or to USB hub, check that it supplies enough power.
- Place the docking station on stable ground.
- If you plan to not use the docking station for a long time, pull out the power supply unit.
- It is not recommended to use the docking station for 24/24 hours.
- If you install a 750 Gb hard disk or more, you should power down the docking station after hours of continuous use because this kind of hard disk tends to heat.
- When you intend to not using the docking station for a long time, remove the power supply from the mains
- Manipulate carefully the docking station. If you drop it, the hard disk and the docking station might be defective.
- This docking station is not compliant with Windows 95/NT4/98SE/ME because it has no driver for these outdated operating systems.
- If you use USB v1.1 or USB v2.0, the data transfer will be lower than with USB v3.0 port.
- You have to install the utility to use the OTB function. Moreover it works only with Windows XP/VISTA/7. It does not work with Windows 8, nor MAC OS.
- This device supports 3To or 4 To hard disk formatted in MBR mode in 1 or several partitions. It can support by example one single GPT partition of 2.7 To. You will need Windows XP 64 bits or Windows VISTA/7/8 32/64 bits to take charge hard disk with capacity over 3 To.

#### Cloning function

The docking station can support 2.5" or 3.5" hard disk duplication without computer connection. It is the blind write of the disk with its partitions. You can boot up from the disk copy. The destination copy hard disk must at least be equal or superior to the original hard disk unit, if not the cloning can not be made. You have to put the original hard disk into Source A slot, and the clone hard disk into Target B slot. Be carefully otherwise you will erase your original data. You do not need to format the clone hard disk: the docking station will do it.

Hard disk copy must be healthy: if you install defective hard disk or hard disk with issue, cloning might not be active. Change and replace by healthy hard disk unit.

Connect the power supply unit to the mains and to the docking. You have to disconnect USB cable to start the cloning function. Pull out the USB cable. Power on the docking station with ON/OFF switch.

Press two times the **Clone** button Power **R/W** begins to flicker in red/green. The duplication is beginning. Otherwise restart this operation.



During the cloning the 25% LED indicator will blink in green while the **R/W** LED is lit steady in red. Once 25% copy has been made, the 25% LED indicator will remain lit green.



Then 50% LED indicator LED will be flashing in green while the **R/W** LED is lit steady in red.

And so on until 100% copy.

When the cloning is finished, the 25%-50%-75%-100% LED are lit in green and the R/W LED will lit in green. The cloning is over. By example copying 25 Gb takes 23 minutes, 830 Gb about 3H40. Speed cloning depends on hard disk velocity.

The destination copy hard disk must at least be equal or superior to the original hard disk unit. Otherwise, the cloning will not begin. Excess capacity will not be seen. You can activate it, right click on **My computer**, choose **Manage** then choose **Disk management** in **Storage**. You can format unused partition to be able to be recognized by your computer.

Hard disks will sleep automatically. You have to take off them and insert only one hard disk. The docking station will not be able to see both hard disks with same data.

#### FAQs

**Q: I can't find the drive under my computer.**

A: Please make sure your drive is correctly installed, and if it is formatted

**Q: I can't find the drive under my computer. You can't see it in my computer.**

A: Check that you have connected the USB cable

Check that your USB driver is updated, that your operating system is updated.

Check that in your motherboard bios that you have enabled **USB Keyboard support** or **Legacy USB support** in **Advanced Chipset Features** or **Integrated peripherals** in **Onchip USB**.

Unplug and plug again the external enclosure. Reboot the system if you connect in eSATA mode.

**Q: After plugging the USB port, the drive is not spinning at all.**

A: This usually means the AC adapter is not connected yet, so there is no power

**Q: After installing the drive. Why it is still recognized as "Unknown device"**

A: Pull out the external enclosure and reconnect it. Check that your HDD is formatted. Otherwise check if your HDD is not defective.

**Q: Can I use external USB hub ?**

A: Yes, USB hub works in the same way as the computer USB ports. Check that it is powerful to powered the hard disk or adds external power supply to the hub

**Q: My computer doesn't have USB 3.0 port, Can I use USB 3.0 host adaptor ?**

A: USB 3.0 host adapter works in the same way as the built-in USB ports.



This product is in compliance with the essential requirements of the European Directives for which it is concerned. You can download declaration of conformity on the website : <http://www.spyker-france.com>