

USER'S MANUAL

PCI Express Parallel Communication Board

English Version

Second Edition, March 2014



SUNIX Co., Ltd.

Tel: +886-2-8913-1987

Fax: +886-2-8913-1986

[Http://www.sunix.com](http://www.sunix.com)

info@sunix.com

PCI Express Parallel Communication Board

User's Manual

Copyright

Copyright© 2014 SUNIX Co., Ltd. All Rights Reserved.

No part of this publication may be reproduced, transcribed, stored in a retrieval system, translated into any language, or transmitted in any form or by any means, photocopying, manual, or otherwise, without prior written permission from SUNIX.

Disclaimer

SUNIX shall not be liable for any incidental or consequential damages resulting from the performance or use of this equipment.

SUNIX makes no representations or warranties regarding the contents of this manual. Information in this manual has been carefully checked for reliability; however, no guarantee is given as to the correctness of this content. In the interest of continued product improvement, this company reserves the right to revise the manual or include change in the specifications of the product described within it at any time without notice and without obligation to notify any person of such revision or changes. The information contained in this manual is provided for general use by the customers.

Trademarks

SUNIX is a registered trademark of SUNIX Group.

All other trademarks or registered marks in this manual belong to their respective owners.

Safety Information

1. Keep this User's Manual for future reference.
2. Always read the safety information carefully.
3. Keep this equipment away from direct sunlight, or in humid or damp places.
4. Do not place this equipment in an unstable position, or on vibrating surface before setting it up.
5. Do not use or place this equipment near magnetic fields, televisions, or radios to avoid electronic interface that affects device performance.

Regulatory Compliance

FCC Conditions

This equipment has been tested and found to comply with Part 15 of the FCC Rules. Operation is subject to the following two conditions:

- (1) This equipment may not cause harmful interference
- (2) This equipment must accept any interference received, including interference that may cause undesired operation.

Important! Changes or modifications not expressly approved by the manufacturer responsible for compliance could void the user's authority to operate the equipment. Use an approved phone set.

CE

This equipment is in compliance with the requirements of the following regulations: EN 55022:

CLASS B

WEEE Information

For EU (European Union) member users: According to the WEEE (Waste electrical and electronic equipment) Directive, do not dispose of this product as household waste or commercial waste. Waste electrical and electronic equipment should be appropriately collected and recycled as required by practices established for your country. For information on recycling of this product, please contact your local authorities, your household waste disposal service or the shop where you purchased the product.



Table of Contents

Chapter 1 Introduction

1.1 Overview	6
1.2 Package Checklist.....	6
1.3 Product Features.....	7
1.4 Product Specifications.....	8

Chapter 2 Hardware Installation

2.1 Hardware Installation	10
2.2 Pin Assignment	11

Chapter 3 Software Installation

3.1 Windows Driver Install.....	14
3.2 Windows Driver Uninstall	17
3.3 Windows Verify Installation	18
3.4 Linux Driver Install.....	19

Chapter 4 Port Configuration

4.1 Configure Parallel LPT Port Settings.....	22
4.2 LPT I/O Resource	22
4.3 LPT Port Number Settings	23

Chapter 5 Appendix

5.1 Troubleshooting	25
5.2 Product Family	27
5.3 Contact Information.....	28

WHQL Certification Approval



The Designed for Microsoft Windows 32/64-bit operation system WHQL logo identifies products that meet Microsoft's quality standards, SUNIX I/O products carry with this logo and listed on Windows Catalog. WHQL logo includes below operation system version

Microsoft Windows Client: Windows XP / Vista / 7 / 8 / 8.1 (X86/X64)

Microsoft Windows Server: Windows 2003 / 2008 / 2012 (X64)

1.

Introduction

SUNIX Golden I/O series, a line of PCI Express Parallel Communication Board, is designed to meet PCI Express Base Specification Ver1.1 (Compliant with PCI Express General 2 Specification). It can be installed in virtually any available PC system and compatible with all major operating systems. Users do not need to manually set jumpers to configure I/O addresses and IRQ locations.

This board supports independent parallel LPT port for connecting printers, IC programmers, ZIP Drives, or other Parallel devices

The following topics covered in this chapter:

- ◆ **1.1 Overview**
- ◆ **1.2 Package Checklist**
- ◆ **1.3 Product Features**
- ◆ **1.4 Product Specifications**

1.1 Overview

Thanks for purchasing SUNIX PCI Express Parallel Communication Board; it is compatible with IEEE1284 standard parallel interfaces. User can expand parallel LPT ports on PC-based system by installing into PCI Express x1, x2, x4, x8 or x16 lane slots. SUNIX parallel card is designed with SUNIX high performance and realizable parallel connectivity controller and as well built with many of SUNIX advanced features and technologies, making it the advanced and high efficient solution for commercial and industrial automation applications.

1.2 Package Checklist

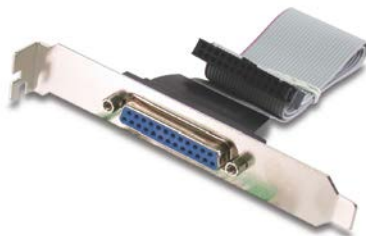
Please check if the following items are present and in good condition upon opening your package. Contact your vendor if any item is damaged or missing.

1. Hardware:

PCI Express Parallel Communication Board × 1

Cable: (Only for **2**-port Parallel Board)

13x2 Pin Header to DB25F Flat Cable With Bracket set × 1



2. CD Driver

3. User's Manual (This document)

1.3 Product Features

- High performance SUNIX IEEE1284 parallel controller on-board.
- Ultra low power consumption design for Green Environment.
- Designed to meet PCI Express Base Specification Revision 1.1
- Supports x1, x2, x4, x8, x16 (lane) PCI Express Bus connector keys.
- Expand IEEE1284 parallel LPT port on system.
- Support IEEE 1284-1994 parallel port standard
 - ECP (Enhance Capacity Port) / EPP (Enhance Parallel Port)
 - SPP (Standard Parallel Port) / BPP (Bi-direction Parallel Port).
- Auto-switching between ECP/EPP/SPP/BPP modes without configuration.
- Plug-n-Play, I/O address and IRQ assigned by system.
- Certified by CE, FCC, RoHS, and Microsoft WHQL approval.
- Support Microsoft Windows, Linux, and DOS.

Note:

* LPT port does not support legacy 278 / 378 ISA address under Windows nor Linux operation systems, but only DOS mode.

* Do not support LPT Key Locker Parallel devices, because of legacy ISA address limitation

1.4 Product Specifications

Parallel Communication

Interface	IEEE-1284
Mode	SPP/ECP/EPP/BPP (Auto-switching)
Controller	SUNIX SUN2212
BUS	PCI Express Specification Ver1.1
Connector Key	PCI Express one lane (x1)
IRQ & IO	Assigned by System
Data Speed	Maximum 1.8 MB/s
FIFO	16 byte Hardware
Number of Port	1 or 2-port
Board Connector	DB25 Female
Protection	±2KV ESD protection for each signal Human Body Model (HBM)

Driver Support

Windows Client	XP / Vista / 7 / 8 / 8.1 (X86/X64)
Windows Server	2003 / 2008 / 2012 (X64)
Microsoft Embedded	XP Embedded / POS Ready 2009 / Embedded System 2009
Linux	Linux 2.4.x / 2.6.x
DOS	DOS

Regulatory Approvals

Hardware	EN55022 Class B, EN55024, EN61000-3-2, EN61000-3-3, FCC Part 15 Class B, RoHS
Software	Microsoft WHQL Windows Microsoft Client: XP / Vista / 7 / 8 / 8.1 (X86/X64) Microsoft Server: 2003 / 2008 / 2012 (X64)

Environment

Operation Temperature	0 to 60°C (32 to 140°F)
Operation Humidity	5 to 95% RH
Storage Temperature	-20 to 85°C (-4 to 185°F)

2.

Hardware Installation

This chapter includes information about hardware installation for PCI Express Parallel Communication Board. The following topics are covered:

- ◆ **2.1 Hardware Installation**
- ◆ **2.2 Pin Assignments**

2.1 Hardware Installation

The hardware installation of PCI Express Parallel Board is easy to carry out. Before inserting the card into the PCI Express bus, please follow the detailed steps given below to install the PCI Express Parallel Board in your computer.



Safety First

To avoid damaging your system and boards, make sure your PC's power is turned off before installing PCI Express card.

Step 1: Turn your PC's power off, and shut off the power to any peripheral.

Step 2: Remove the power plug from the plug socket.

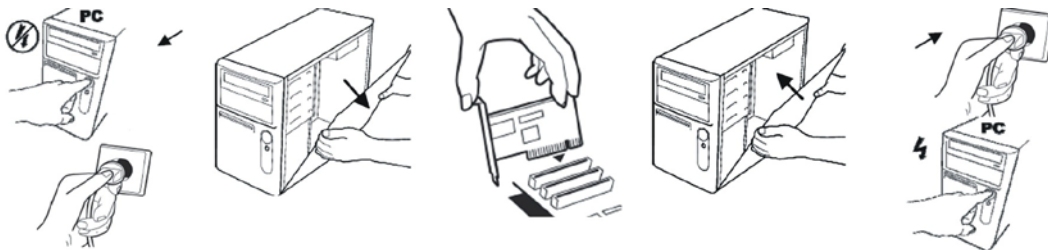
Step 3: Remove the cover from the computer case.

Step 4: If fitted. Remove the metal cover plate on the rear of a free PCI-E slot.

Step 5: Insert PCI Express Parallel Communication Board into the free PCI-E slot and screw it firmly on the bracket side.

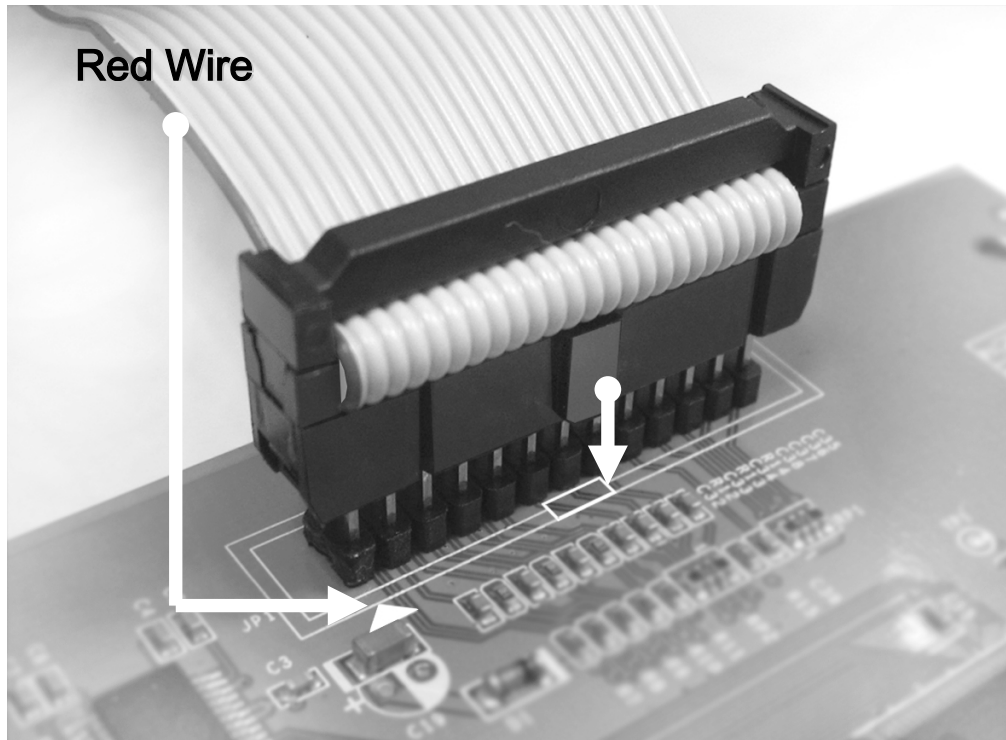
Step 6: Place the cover back onto the computer.

Step 7: Insert the plug into the plug socket.

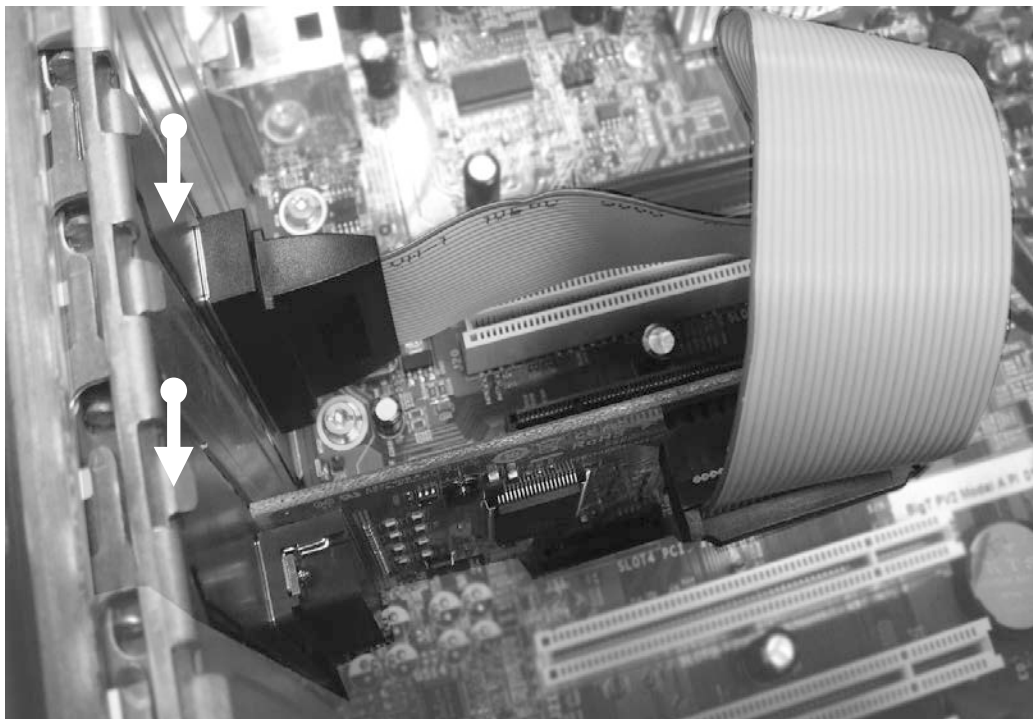


For 2-port PCI Parallel Card, there is one extend flat cable along with the board.

Please connect the cable 2x13 female header to the board. The red wire matches with the arrow mark (first pin) on the board.

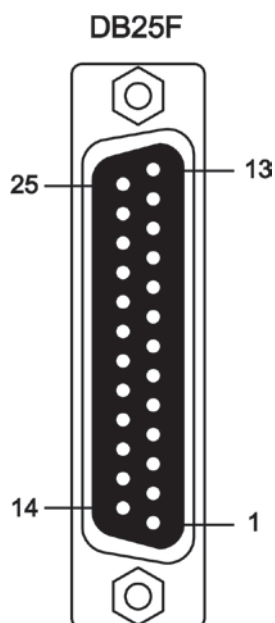


Fix the bracket on the PC chassis.



2.2 Pin Assignment

This chapter provides the pin assignments for SUNIX PCI Express Parallel Communication Board, as well as the DB25 female pin assignments for the optional accessories.



DB25F	PIN	DB25F	PIN
1	STROBE	14	AUTO FEED
2	DATA0	15	ERROR
3	DATA1	16	INT
4	DATA2	17	SELECT INPUT
5	DATA3	18	GND
6	DATA4	19	GND
7	DATA5	20	GND
8	DATA6	21	GND
9	DATA7	22	GND
10	ACKNOWLEDGE	23	GND
11	BUSY	24	GND
12	PAPER EMPTY	25	GND
13	SELECT		

3.

Driver Installation

After installing the PCI Express Parallel Communication Board in your system successfully, please follow the step by step software installation guide to confirm how to install appropriate driver and configure the LPT port settings.

The driver for PCI Express Parallel Board supports Windows and Linux operating systems, and you can select your requirement in the following chapter:

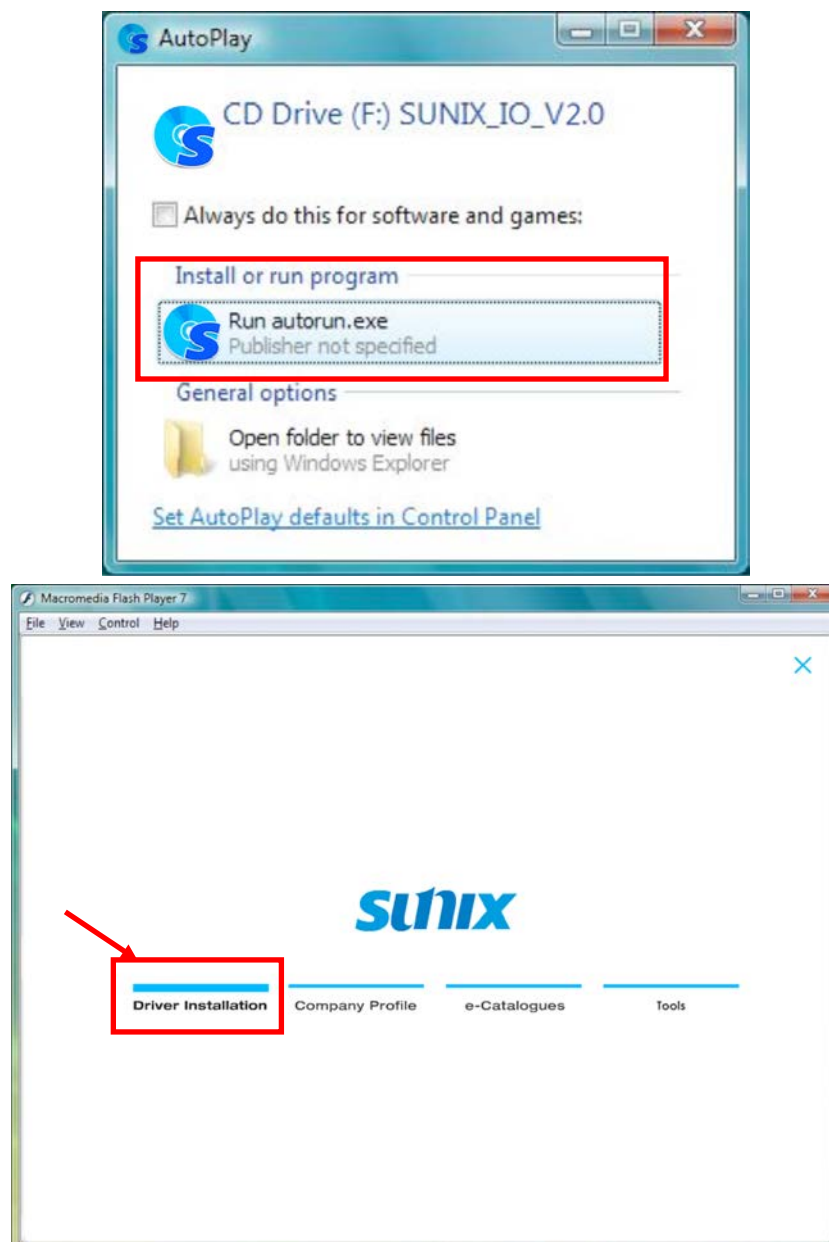
The following topics covered in this chapter:

- ◆ **3.1 Windows Driver Install**
- ◆ **3.2 Windows Driver Uninstall**
- ◆ **3.3 Windows Verify Installation**
- ◆ **3.4 Linux Driver Install**

3.1 Windows Driver Install

Please refer to following instructions to install the driver for the first time under Windows operation system. You will need to plug the board in an available PCI or PCI-X slot first, before installing the driver.

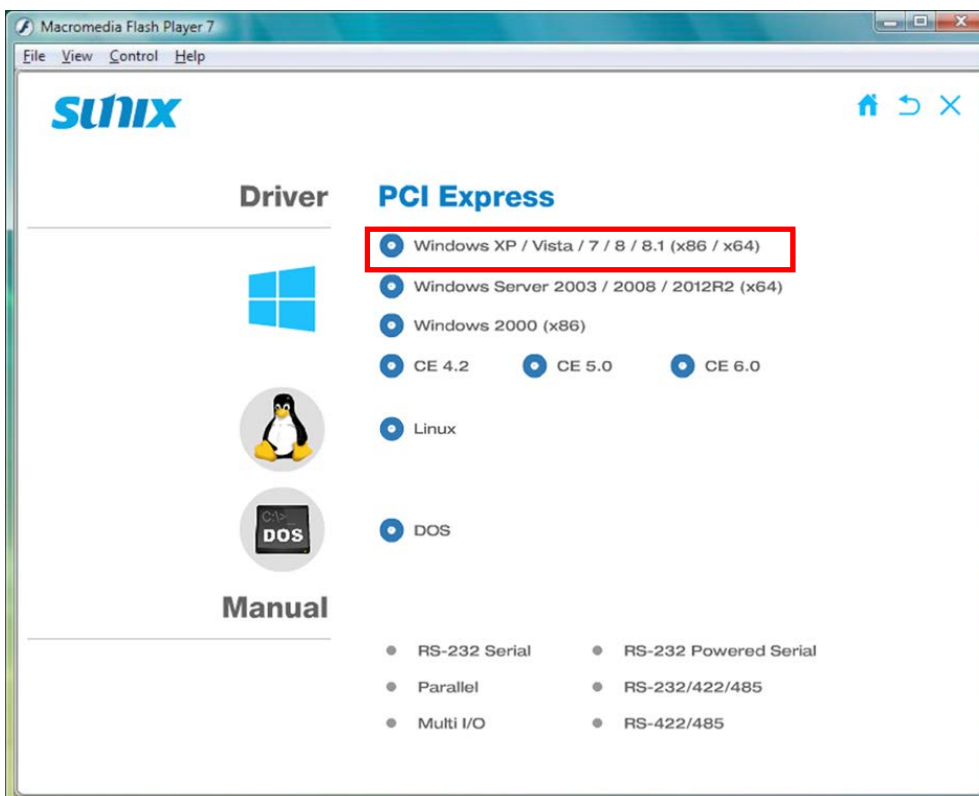
- (1) After the board is physically installed and the PC boots up, system will detect the PCI Express Parallel Board and prompt for driver installation wizard, please choose cancel.
- (2) Put CD driver bound with product in your CD / DVD ROM drive.
Please select Run autorun.exe., then select **"Driver Installation"**.



(3) Please select the product interface you bought, such as PCI Express.



(4) Please select the O.S. version you are using, such as Windows Vista. Then system will process the driver installation step automatically.



(5) Click “**Next**” to continue driver installation steps.



(6) Click “**Finish**” to end installation steps. If SUNIX I/O card install correct in your system, you can read “**V**” icon in this picture.

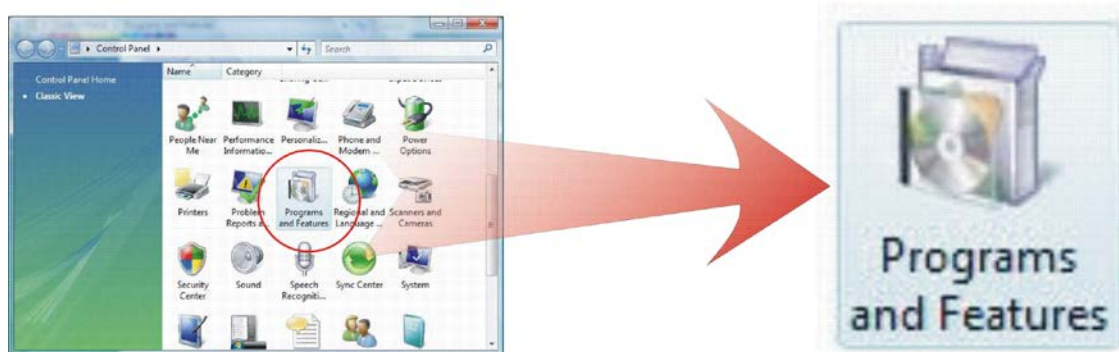


3.2 Windows Driver Uninstall

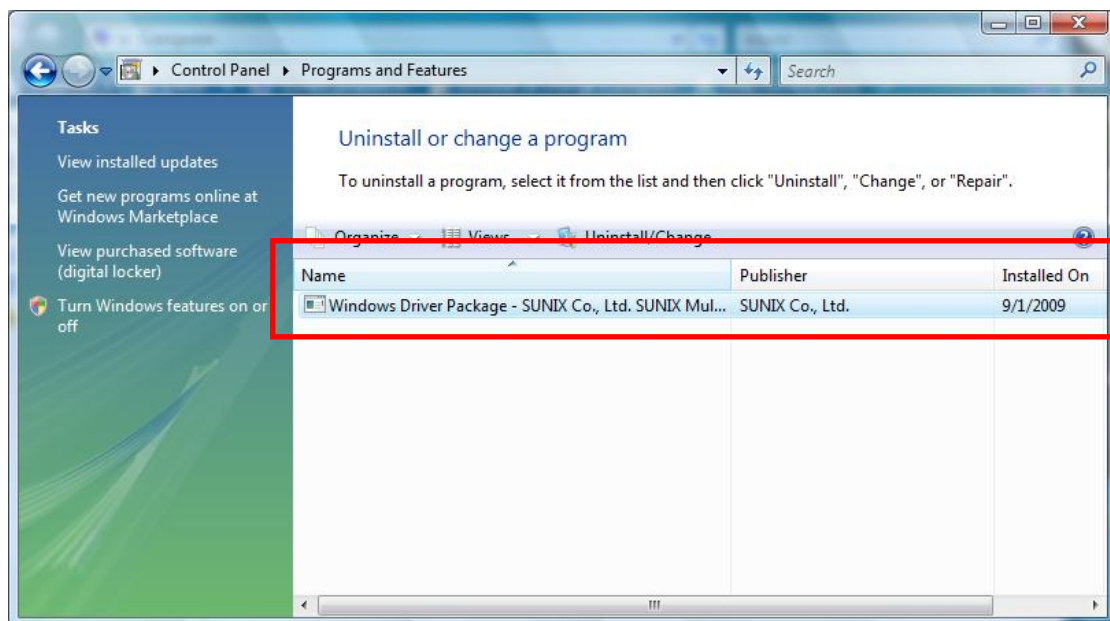
Please refer to following instructions uninstall Multi-I/O card driver.

- (1) Click on the “**Programs and Features**” tab in the Windows Control Panel.

Start > Controller Panel > Programs and Features



- (2) Entry Uninstall or change a program page, and double click “**Windows Driver Package – SUNIX Co., Ltd SUNIX Multi-I/O Controller**” to process driver uninstall procedure.

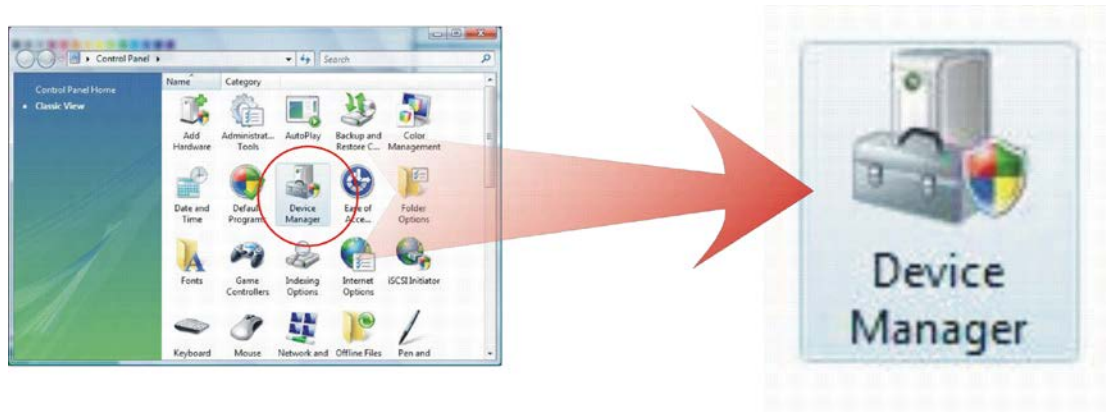


3.3 Windows Verify Installation

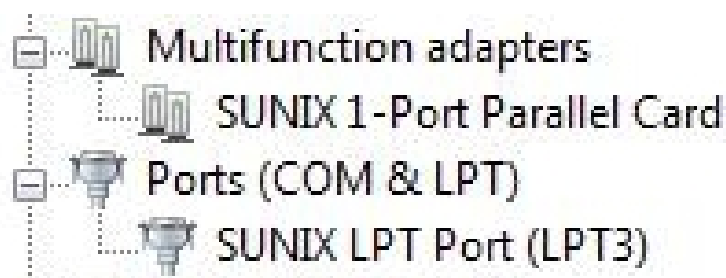
You can use Windows “**Device Manager**” to verify proper installation.

(1) Click on the “**Programs and Features**” tab in the Windows Control Panel.

Start > Controller Panel > Device Manager



(2) In the Device Manager window, you should see this board under **Multifunction adapters** (SUNIX 1-port Parallel Card in this example). You should also see SUNIX LPT port under **Ports (COM & LPT)**. (SUNIX LPT Port LPT3 in this example).



3.4 Linux Driver Install

This installation guide describes the procedures to install the PCI parallel board in Linux kernel 2.4.x and 2.6.x. Please refer to "snx_Vx.x.x.x.tar.gz" for driver installation detail in CD Driver (Linux folder) directory.

: \PCI_IO \Linux

(1) Driver install

Please create a directory under root directory, e.g /temp, do commands:

```
# cd /  
# mkdir temp
```

After get driver file "snx_Vx.x.x.x.tar.gz". Copy file to /temp directory, then extract and install, do commands:

```
# cp snx_Vx.x.x.x.tar.gz /temp  
# cd /temp  
# tar xvfz snx_Vx.x.x.x.tar.gz  
# cd /temp/snx  
# make clean ; make install
```

* If system is Suse 9.0 and errors occur when

* "make clean ; make install", do commands:

*

* # cd /usr/src/linux/

* # make cloneconfig

* # make dep

*

* then do "make clean ; make install" again in /temp/snx

Load driver module, do command:

```
# modprobe snx  
or  
# insmod /temp/snx/driver/snx.ko (snx.o for kernel 2.4)
```

Check driver module, do command:

```
# lsmod | grep snx
```

Unload driver, do command:

```
# rmmod snx
```

(2) Device node creation

Each parallel port has two device node which is name "lp?" and "parport?". This step will backup lp2~lp3 and parport2~parport3 to lp?.bak and parport?.bak in /dev for your system first. Then, create lp2~lp3 and parport2~parport3 in /dev for sunix driver, maximum up to 2 parallel ports.

This step will be done when do "make clean ; make install", if device nodes aren't in /dev, do commands:

```
# cd /temp/snx/snxmknod  
# ./snxmknod
```

This will create device nodes in /dev.

If there are more than two boards installed, LPT port device naming convention please refer to F1.

4.

Port Configuration

This chapter shows all Parallel LPT port settings that user came with usually, such as LPT port number, IO address and others.

The following topics covered in this chapter:

- ◆ **4.1 Configure Parallel LPT Port Settings**
- ◆ **4.2 LPT I/O Resource**
- ◆ **4.3 LPT Port Number Settings**

4.1 Configure Parallel LPT Port Settings

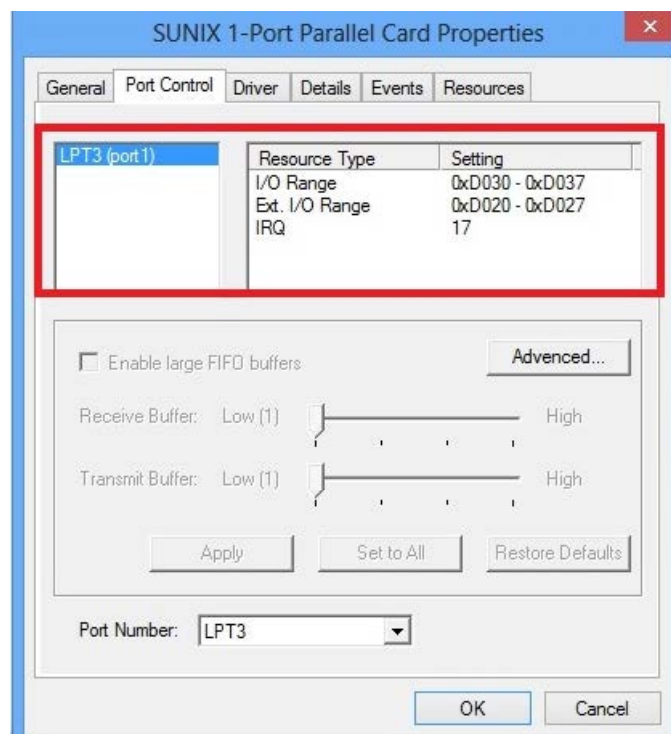
After the parallel board and LPT port drivers are installed, please refer to following instructions to configure LPT port settings.

- (1) Please launch the “**Device Manager**”.
- (2) Right click the “**SUNIX 1-port Parallel Card**” item from the “**Multifunction adapters**” sub-tree and click “**Properties**” to execute the detail settings.



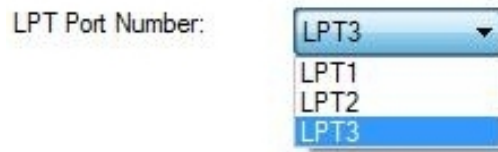
4.2 LPT I/O Resource

User can read the LPT port’s “**IO Range**” and “**IRQ**” located in system by selecting “**Port Control**” tab.



4.3 LPT Port Number Settings

System default setting is LPT3, if you want to change LPT number to another port, please follow up below steps. Please select “**Port Control**” tab. Under LPT Port Number, select a LPT number to assign to the port. Click “**OK**” to approve the settings for the selected port.



Note: In order to prevent system resource conflict, do not select “**in use**” port.

5.

Appendix

This chapter shows some problems that user came with usually. Also you can check it if the PCI Express Parallel Board can not work properly in your system after following hardware and software installation steps. In addition, you could contact with us for detail technical product information.

In this appendix, we cover the following topics.

- ◆ **5.1 Troubleshooting**
- ◆ **5.2 Product Family**
- ◆ **5.3 Contact Information**

5.1 Troubleshooting

1. System fails to find the PCI Express Parallel Board or LPT port.

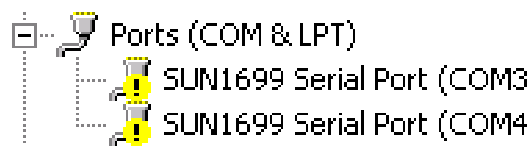
A: It may cause by following issue:

- a. The board is not properly plugged into the PCI Express slot.
- b. Please clean the golden finger.
- c. The PCI Express slot is defective. Please try other slots until you find one that works.
- d. The mainboard does not have an available IRQ for the this board. Enter the PC'ss BIOS and make sure an IRQ setting is available in the PCI/PnP settings.
- e. The board itself might be defective. You can try another mainboard testing this board working or not.

2. There is a blue screen when I entry operation system.

A: The possible reason is an IRQ or I/O address conflict with other PCI Express bus adapters, such as LAN or serial boards, or with the system BIOS. Refer to the corresponding problem in the previous FAQ for solutions.

3. There are some exclamation marks on the LPT port and Parallel Card in device manager.



A: It caused by the wrong driver installing. Please uninstall current driver by following driver uninstall chapter, and delete SUNIX parallel card and LPT port in the device manager. Then please reboot the PC, and re-install the correct or latest driver which can download from SUNIX official website (<http://www.sunix.com.tw/>). If problem still happens, please contact with us for detail technical product information.

4. How can I set the LPT port to the legacy 278 or 378 ISA address?

A: Because of PCI Express plug-n-play rule and windows operation system limitation, you can NOT remap to 278H or 378H legacy ISA IO address under Microsoft Windows 2000, XP, 2003 Vista, 2008, 7 or Linux OS.

5. How come my parallel device can not work on this Card, but work properly under on-board LPT port??

A: a. Please confirms your parallel device connect to the LPT port correctly.
b. Make sure the LPT port number you connected matches with parallel device settings.
c. Your parallel device only works under 278/378 legacy ISA IO address. This card can not satisfy with this feature. Please contact with your parallel device vendor for driver updating.

6. How can I set the different ECP / EPP / SPP / BPP operation mode?

A: Under Windows OS such as 2000, XP, Vista, and 7, PCI parallel card will automatically communicate with the device to which it is connected and sets to that particular mode. For example if this card is connected to a printer that support SPP mode, then this parallel card will communicate with this printer and will automatically set to SPP mode. It means that this card will handshake with the device to which it is connected and configures to that mode. User does not require changing to any particular mode. This parallel card's working mode can not force setting particular mode by driver or BIOS!!

7. Does this board work under PCI Express x16 (lane) slot?

A: Yes, you can install this board under x1, x2, x4, x8, or x16 (lane) PCI Express Bus connector keys.

5.2 Product Family

SUNIX provides kinds of Parallel IEEE1284 interface cards for customer selection, including PCI Express, PCI, CardBus, and ExpressCard. Please refer to the product family table for reference.

Parallel IEEE1284 PCI Express Interface			
Port	Connector	Bracket	Model NO.
2	DB25 Female & 13 x 2 Pin Header	Standard	PAR5418A
	DB44 Female	Low Profile	PAR5418A L
1	DB25 Female	Standard	PAR6408A
		Low Profile	PAR6408A L

Parallel IEEE1284 PCI Interface			
Port	Connector	Bracket	Model NO.
2	DB25 Female & 13 x 2 Pin Header	Standard	PAR5018A
	DB44 Female	Low Profile	PAR5018A L
1	DB25 Female	Standard	PAR5008A
		Low Profile	PAR5008A L

Parallel IEEE1284 ExpressCard Interface			
Port	Connector	Bracket	Model NO.
1	DB25 Female	34mm	ECP1400

Parallel IEEE1284 CardBus Interface			
Port	Connector	Bracket	Model NO.
1	DB25 Female	54mm	CBP1000

5.3 Contact Information

Customer satisfaction is our number one concern, and to ensure that customers receive the full benefit of our products, SUNIX services has been set up to provide technical support, driver updates, product information, and user's manual updates.

The following services are provided

E-mail for technical support

..... info@sunix.com

World Wide Web (WWW) Site for product information:

..... <http://www.sunix.com>