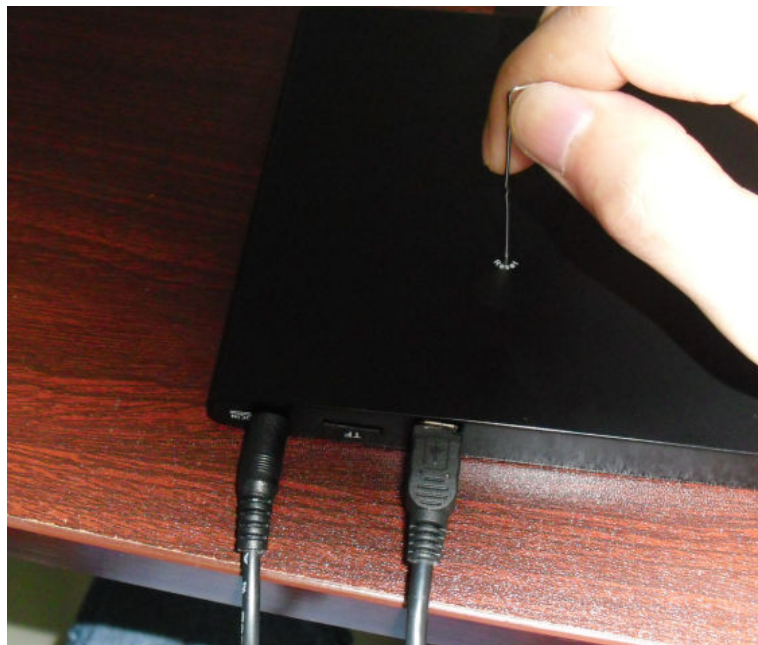


1. Download the SX-SP700A_tool.exe installer from our website and install the tooling onto your computer. Once the installation has been successful, it will create a shortcut on your desktop.
2. After the installation, you are going to need to power off your SKYPAD Alpha. Then, connect the SKYPAD Alpha to your computer through USB. Next, you are going to need a small paper clip or pin to press the reset button on the back of the SKYPAD Alpha. Make sure you hold the reset button with the pin throughout this step.

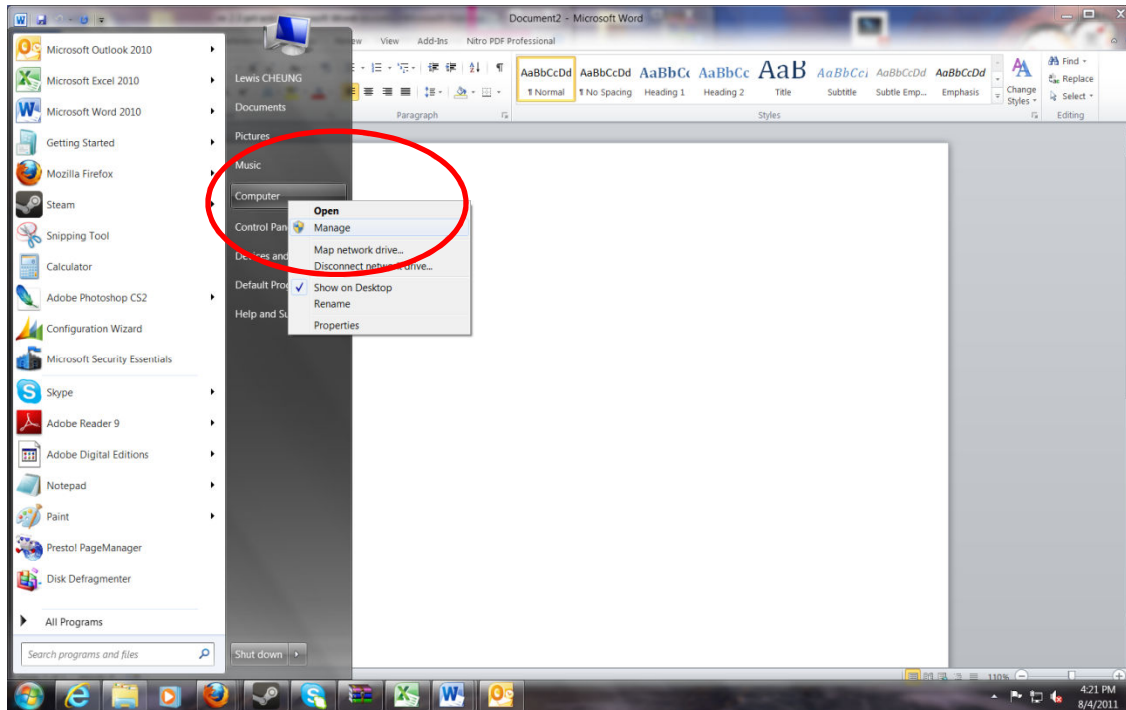


3. Plug in the AC adapter while the reset button is pressed. Your computer will now recognize a different device that is connected to your computer. You may now release the reset button.

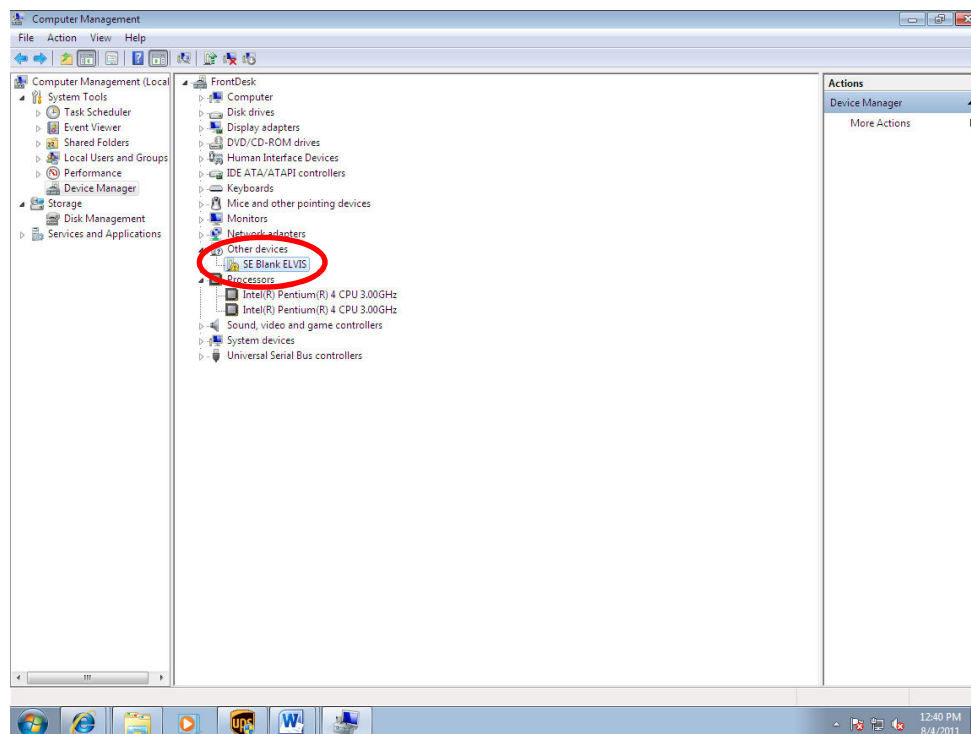


- Now, you are going to need to install the correct driver for your SKYPAD Alpha. Right Click on Computer, left click on Manage to enter to Device Manager .

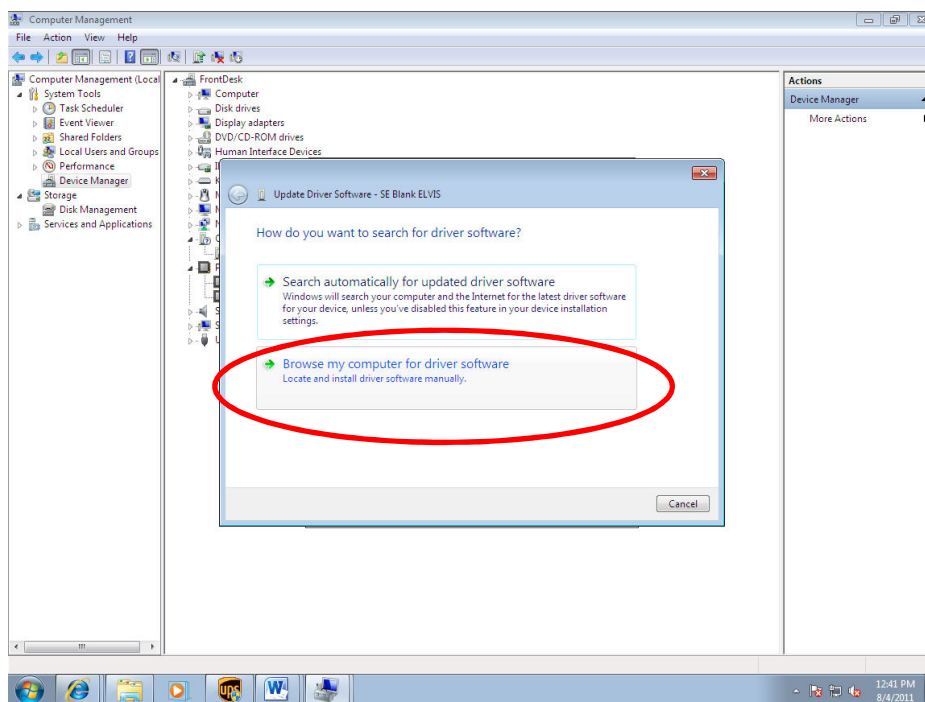
*Note: For Windows XP users, right click on My Computer and left click onto Properties. A new window will pop up called System Properties. Left click onto the tab Hardware and click the button Device Manager.



- Under other devices, look for SE Blank ELVIS, right click on it and then click on update driver. If you do not see SE Blank ELVIS repeat steps 1 and 2 again.

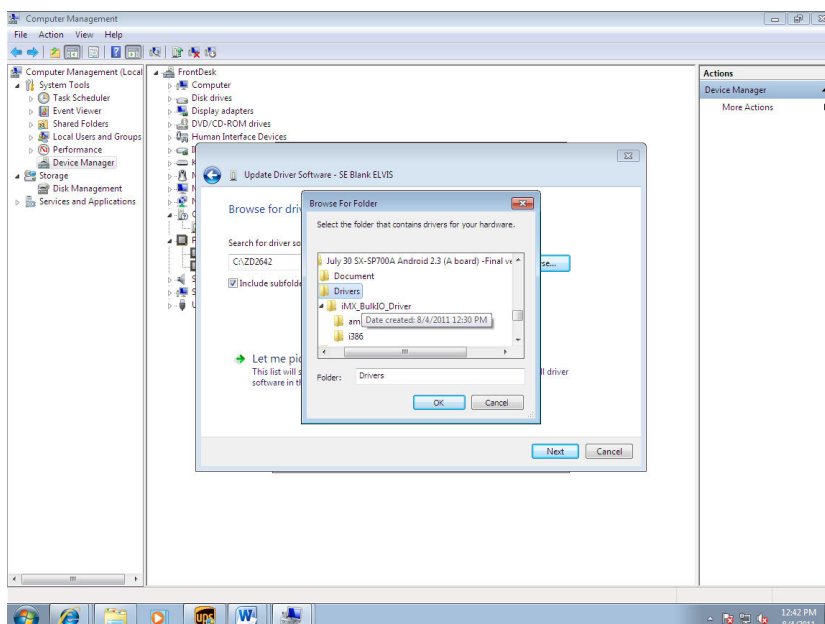


5. After you click on update driver, click on Browse my computer for the driver software. You will then use the driver that you downloaded from our website.

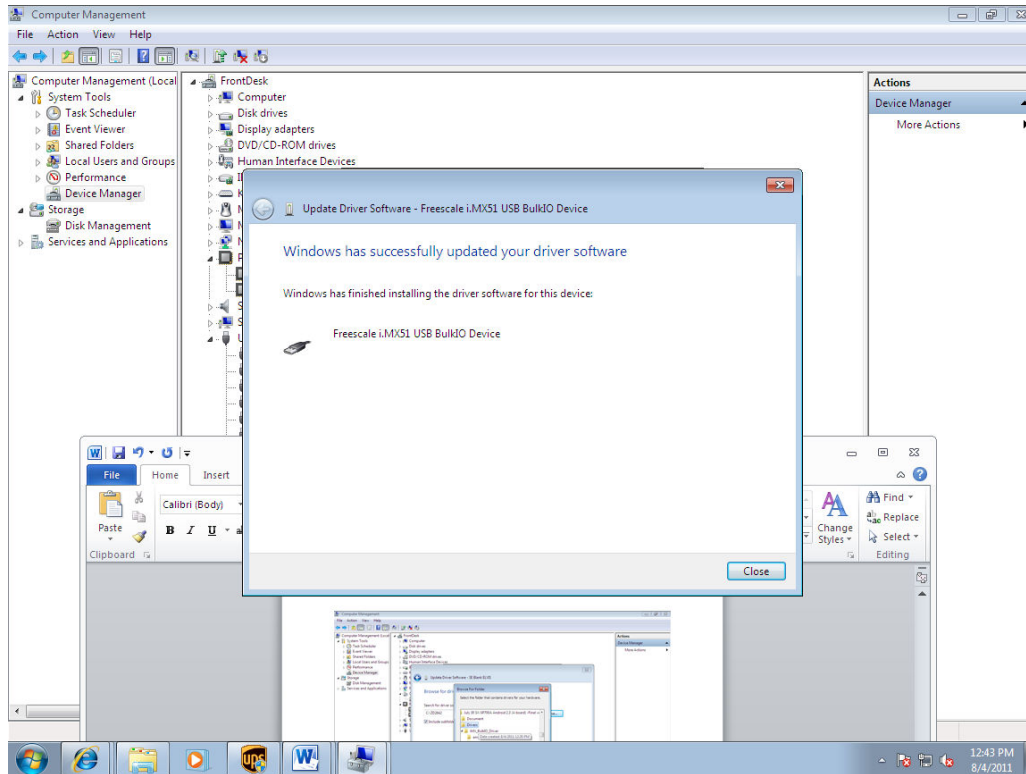


5. Browse to where you installed the tooling or drivers.

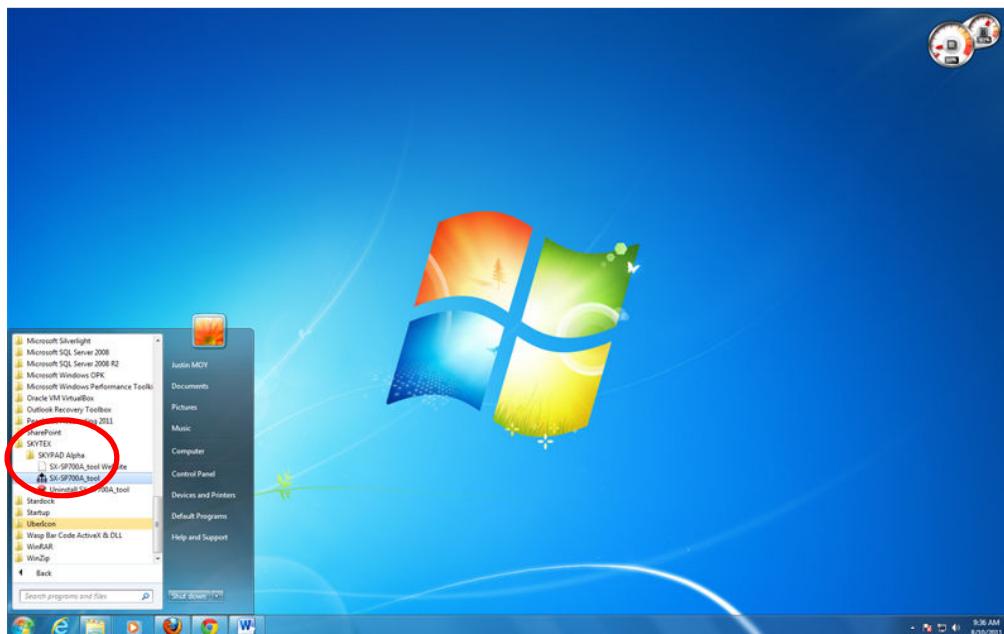
*Note: Normally installed under C:\Program Files\SKYTEX\SKYPAD Alpha\July 30 SX-SP700A Android 2.3 (A board) – Final version\Drivers



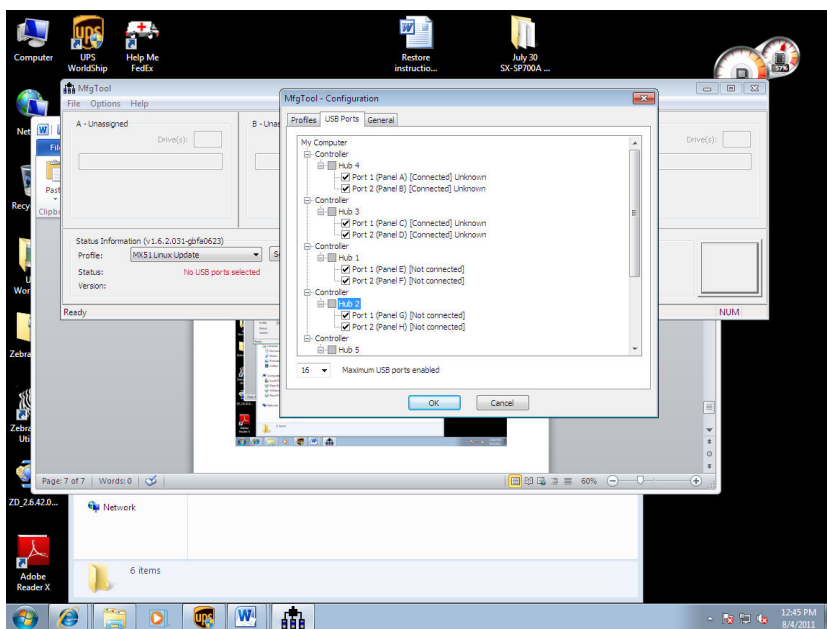
7. After you finished installing the driver you may close all the remaining windows.



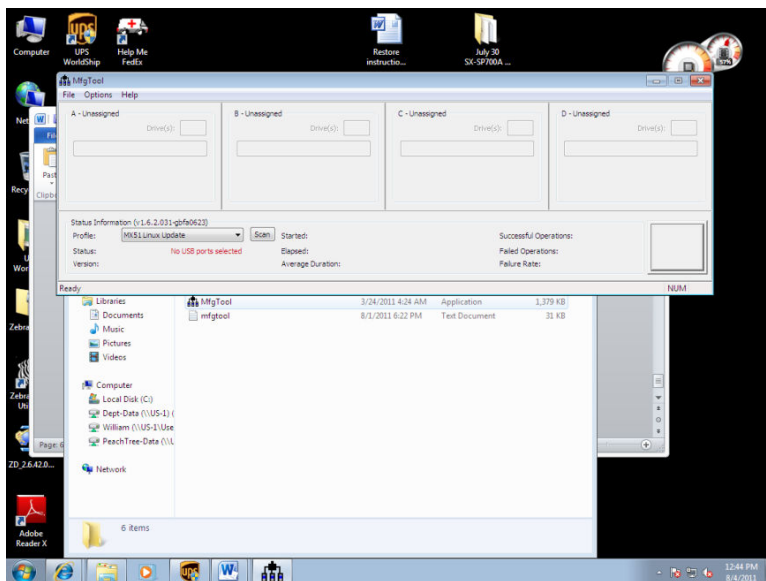
8. Open up the MFG tool (SX-SP700A_tool shortcut) on your desktop or from your Start Menu (Start → Program Files → SKYTEX → SKYPAD Alpha → SX-SP700A_tool



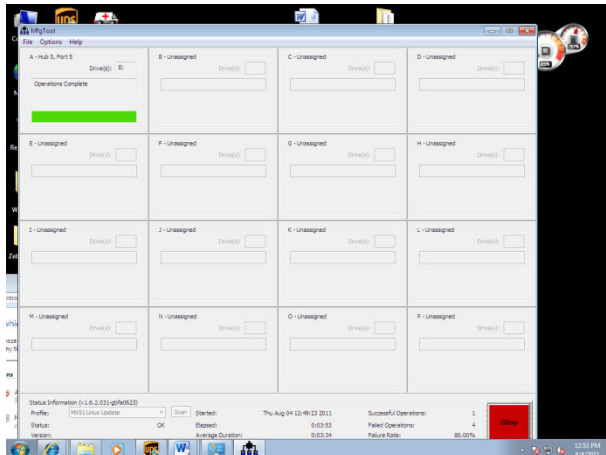
9. You will see an Options tab in the MFG tool. Go to Options and then configurations. Then, select the tab USB Ports → “Under Maximum USB Ports enabled” change it to 16 → check mark all the hub and click ok.



10. Make sure that the Profile drop menu displays MX 51 Linux Update, then click start. Once the process begins, this should take approximately 2-3 minutes.



11. Once the tool says “Operation Complete” you can close everything. Unplug your SKYPAD Alpha and use a small paper clip or pin to reset the unit. If the update fails go back to Options> UPS ports. Unclick all the Hub and ports but leave the hub and port that is detecting your SKYPAD Alpha , The image below shows Hub 5 Port 5 so you would only check on Hub 5 Port 5 under options> USB.



12. After a successful flashing and resetting your unit. You will now enter the Calibration screen will, after calibration your unit will start on its own (approximately 2-3 minutes for the unit to set itself).

Your upgrade is now complete. If you have any further questions please visit <http://www.skytex.com> or call us at (909) 396-8100 for further assistance.

