

NOTE: We recommend that this product is installed by the professional only. we accept no liability for damages caused by incorrect assembly ,installation or use. If there is any doubt, please contact the specialist from the seller for help.

IMPORTANT!

- For safety reasons, the wall or mounting surface must be capable of supporting the combined weight of the mount and the display; otherwise the structure must be reinforced.
- Safety gear and proper tools must be used. Failure to do so can result in property damage and/or serious injury.
- Make sure that no electrical cables,water pipes or gas pipes are located within the wall.

Tools required for the installation:

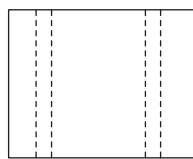
- Phillips Head Screw Driver
- Electric or Portable Drill
- 1/8" (3 mm) Drill Bit + Stud Finder (Drywall Installation)
- 5/16" (8 mm) Masonry Bit (Concrete Installation)

Also make sure that all of the hardware has been included with your mount.You should find the following:

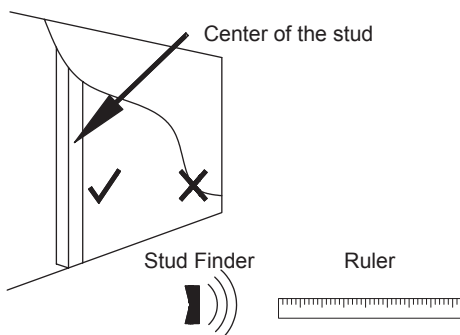
- | | | | | | |
|-----------------------|--|-------------------------|--|--------------------|--|
| (A) Drywall Screw X 2 | | (B) Concrete Anchor X 2 | | (C) M 6 Washer X 4 | |
| (D) M4x12 Bolt X 5 | | (E) M6x12 Bolt X 4 | | (F) M8x12 Bolt X 4 | |
| (G) M4x25 Bolt x4 | | (H) M6x30 Bolt x4 | | (I) M8x30 Bolt x4 | |
| (J) Small Spacer x4 | | (K) Lage Spacer x4 | | | |

Installing the Wall Mount

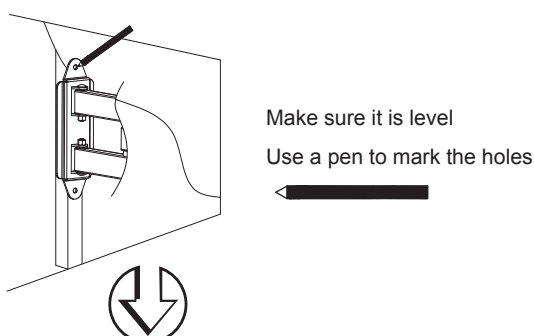
Drywall Installation



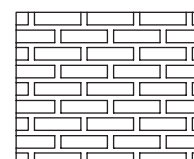
1



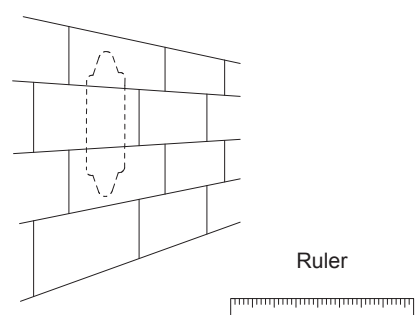
2



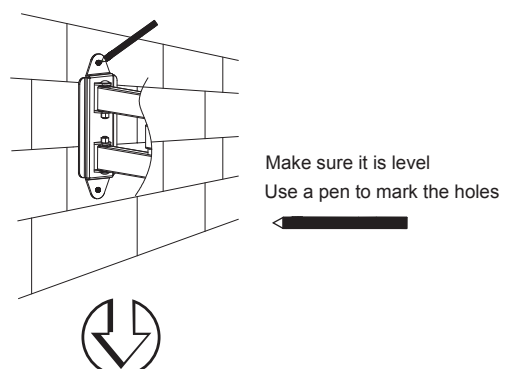
Concrete/Brick Installation



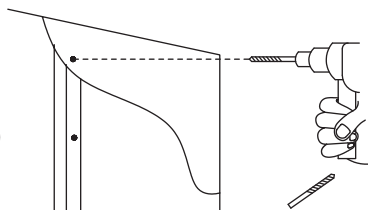
1



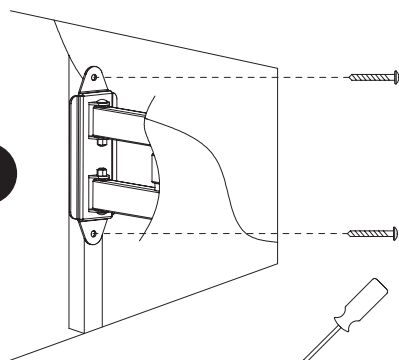
2



3

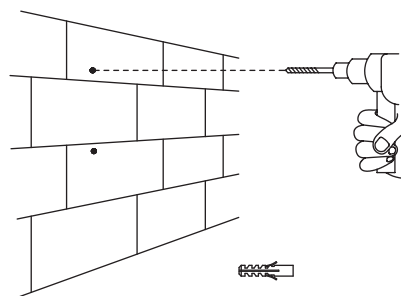


4

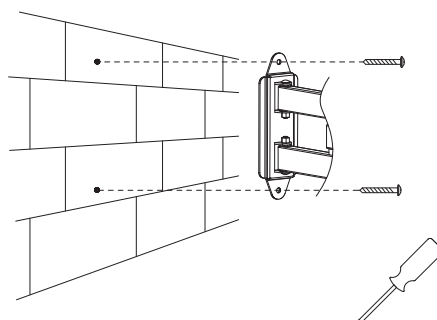


or

3

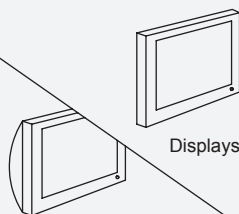


4



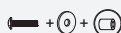
5

Shorter bolts(D or E) / Washers(C)



Displays with flat backs.

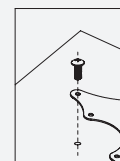
Displays with curved or recessed backs.



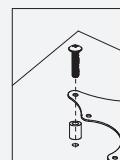
Longer bolts(G or H) / Washers(C) / Spacers(J or K)



6



Displays with flat backs.



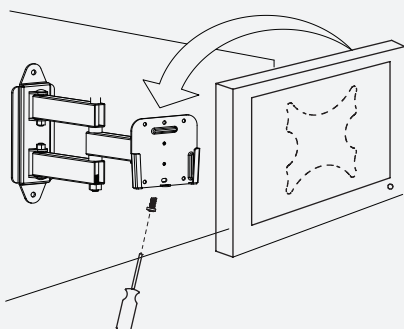
Displays with curved or recessed backs.



Do not use the M6 Washers (E) if you are using the M8 Bolts (H or I).



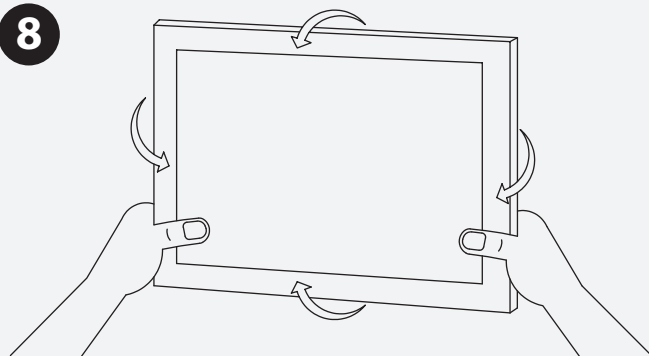
7



For additional security, use the M4 x 12 Bolt (D) to hold the two plates together.



8



- Adjust the hexagon nut located directly behind the head of the mount using a proper wrench.
- To adjust the tilt angle or rotate your screen, firmly grasp the sides of your display and carefully move it into position.