



Wireless 11ac Dual Band USB Adapter AC1200UBE

Quick Installation Guide



Safety Information:

In order to keep the safety of users and your properties, please follow the following safety instructions:

1. This USB wireless network card is designed for indoor use only. DO NOT expose this network card to direct sun light, rain, or snow.
2. DO NOT put this network card at or near hot or humid places, like kitchen or bathroom. Also, do not left this wireless network card in the car in summer.
3. This network card is small enough to put in a child's mouth, and it could cause serious injury or could be fatal. If they throw the network card, the card will be damaged. PLEASE KEEP THIS NETWORK CARD OUT THE REACH OF CHILDREN!
4. This network card will become hot when being used for long time (***This is normal and is not a malfunction***). DO NOT put the network card on a paper, cloth, or other flammable objects after the network card has been used for a long time.
5. There's no user-serviceable part inside the network card. If you found that the network card is not working properly, please contact your dealer of purchase and ask for help. DO NOT disassemble the network card by yourself, warranty will be void.
6. If the network card falls into water, DO NOT USE IT AGAIN BEFORE YOU SEND THE CARD TO THE DEALER OF PURCHASE FOR INSPECTION.
7. If you smell something strange or even see some smoke coming out from the network card, switch the computer off immediately, and call dealer of purchase for help.

Overview

Thank you for purchasing Rosewill's Wireless 11ac Dual Band USB adapter - AC1200UBE. This is an extremely high-speed 802.11 a/b/g/n/ac dual band wireless network USB Adapter. This wireless network adapter is transferring data at a transfer rate of 300Mbps at 2.4GHz or 867Mbps at 5GHz.

AC1200UBE with an easy-to-install USB 3.0 interface and Adjustable foldable antenna for optimum Wi-Fi performance, setting up this wireless adapter will be just as easy!

1.1 Package Content

Before getting started, please verify that your package includes the following items:

1. Rosewill AC1200UBE Wireless 11ac Dual Band USB Adapter x 1
2. Quick Installation Guide x 1
3. Resource CD x 1, including:
 - Wireless Utility and Driver
 - User Manual
 - Quick installation guide x 1

Note:

Make sure that the package contains the above items. If any of the listed items are damaged or missing, please contact with your distributor.

1.2 System Requirement

You must have at least the following

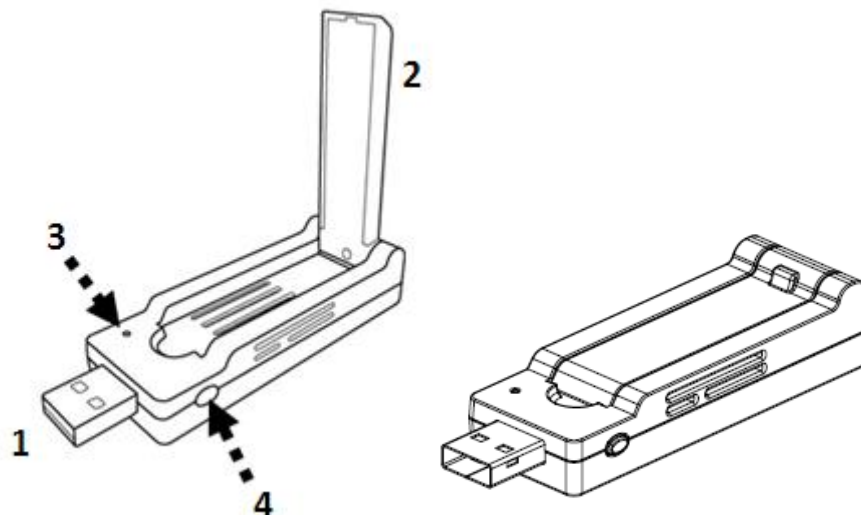
- A desktop PC or Notebook with An empty USB 3.0 port (May not be able work with USB 1.1 port, performance will be greatly reduced)
- At least a 300MHz processor and 32MB of memory
- Windows OS for Windows XP, Vista, Windows 7, and Windows 8
- At least 100MB of available disk space
- A CD-ROM Drive
- An 802.11ac, 802.11n, 802.11g or 802.11a/b Wireless (and Dual Band) Access Point/Router (for infrastructure Mode) or another 802.11ac, 802.11n, 802.11g or 802.11b wireless (and Dual Band) adapter (for Ad-Hoc; Peer-to-Peer networking mode).

Installation Guide

2.1 Hardware Diagram

1. USB Connector

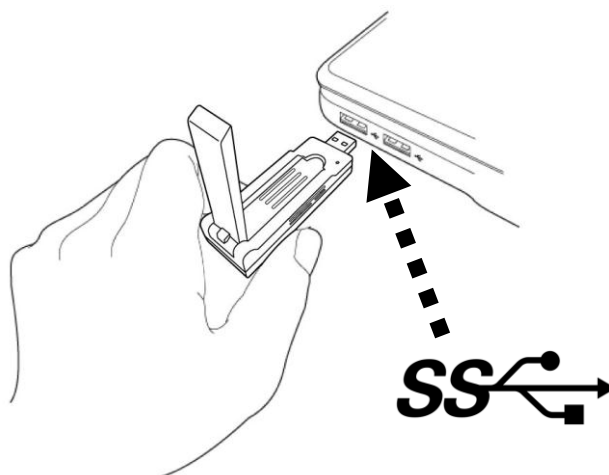
2. Foldable External Wireless Antenna
3. Link/Activity LED
4. WPS Button (Press to activate WPS pairing mode)



2.2 Dual Band Wireless Adapter Driver and Utility Installation

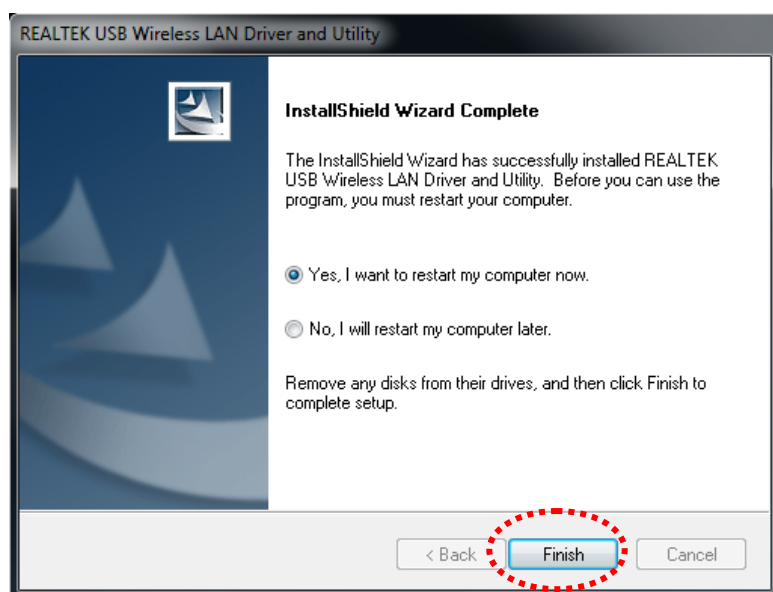
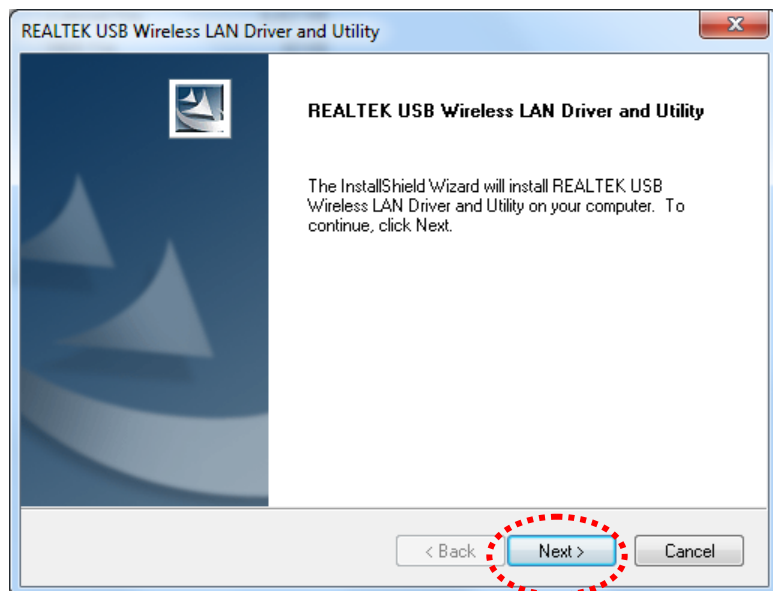
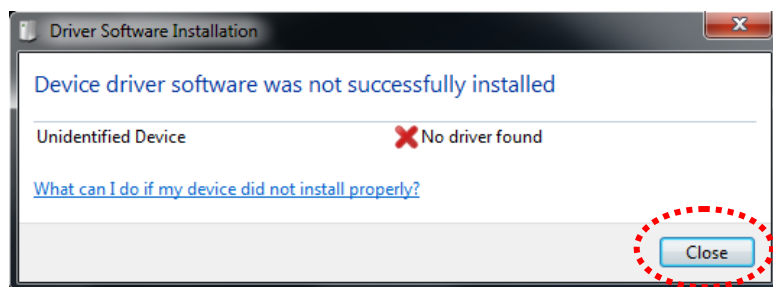
Please follow the following instructions to install your new wireless network card:

1. Insert the USB wireless network card into an empty USB 3.0 port of your computer when computer is switched on. Never use force to insert the card, if you feel it's stuck, flip the card over and try again.



2. Insert device driver CDROM into the CD/DVD ROM drive of your computer, and execute "**Setup.exe**" program in "Driver" folder.

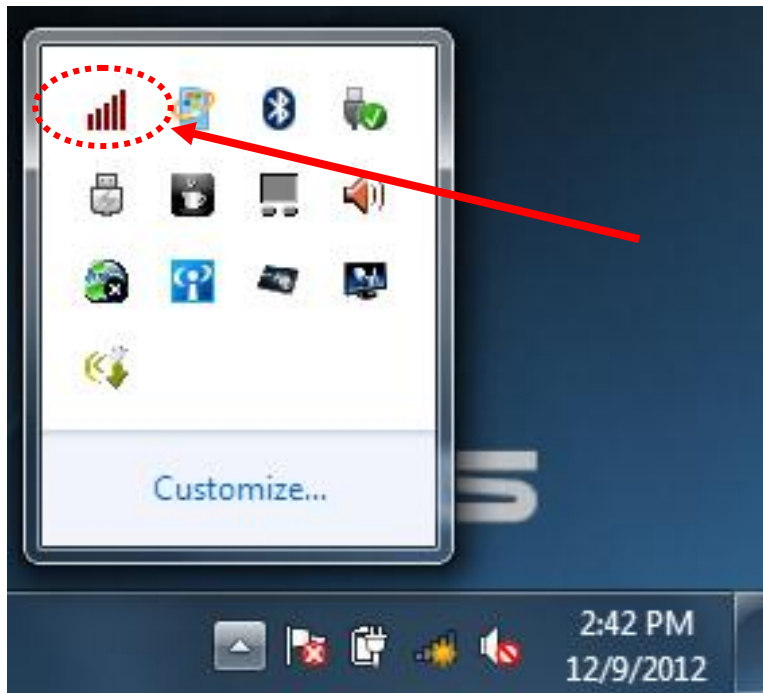




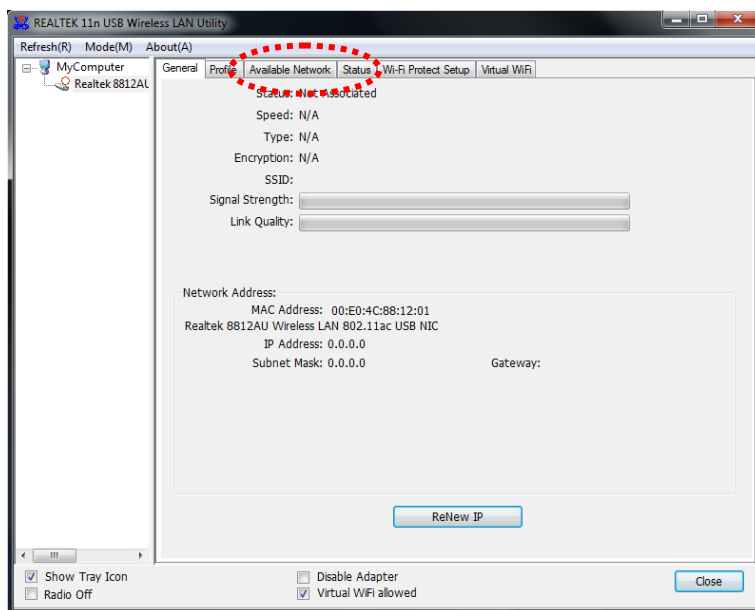
3. The following message will appear on your computer, click "**Close**".
4. Insert device driver CD-ROM into the CD/DVD ROM drive of your computer. Select "**Driver/Utility Installation**" to install the software program.
5. Then Click "**Next**" to continue. Installation procedure needs few minutes to complete, please be patient.
6. Click "**Finish**" to restart your computer to complete installation procedure. If you don't want to restart computer now, select "**No, I will restart my computer later**" option and click "**Finish**".
7. Please note you have to restart your computer before you can use your new USB wireless network adapter.

Connect to Wireless Access Point

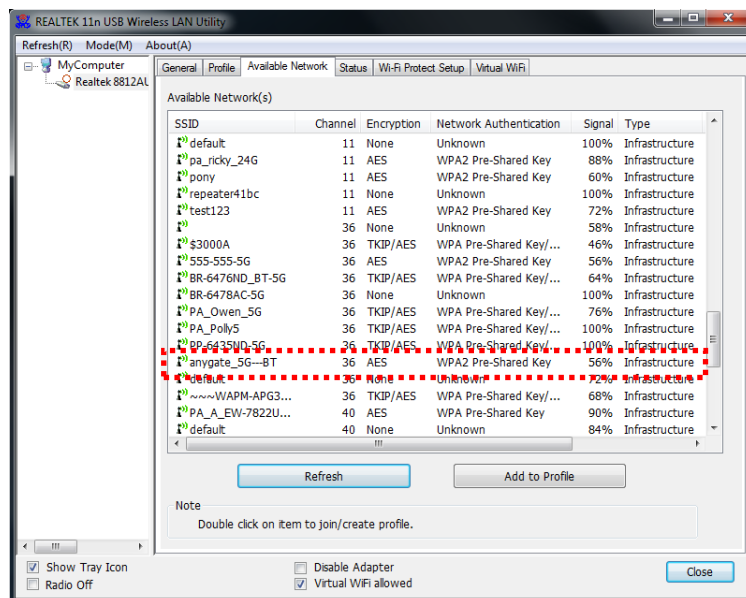
Using Configuration Utility to Connect to Wireless Access Point:



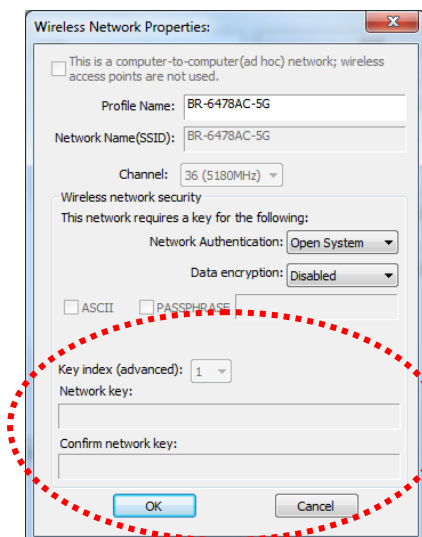
1. After installation is complete, wireless configuration utility will be shown in the desktop of your computer automatically. You will also see an icon at the bottom-right corner of your windows system. You can click the icon by right mouse key, and select the configuration utility you want to use.

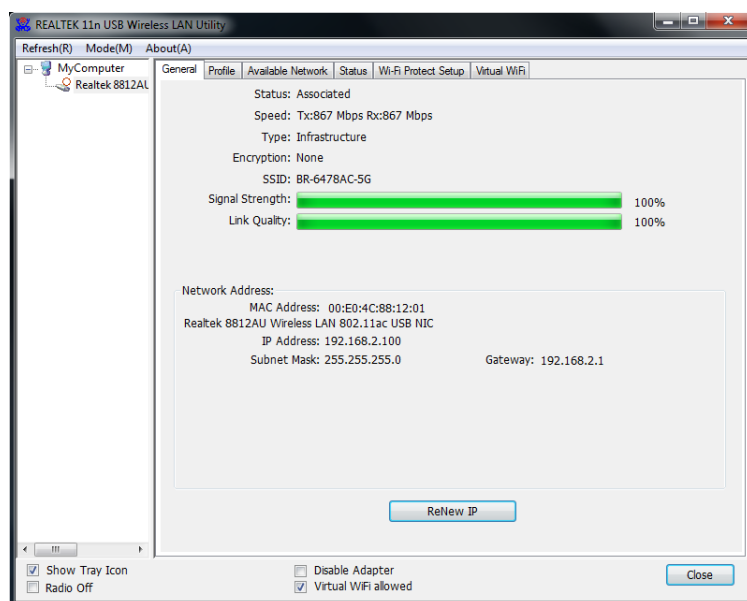


2. Wireless utility will appear. Click “**Available Network**” tab to search for wireless access points nearby.



3. Please wait for a while, and all wireless access points which can be reached by this wireless network adapter will be displayed here.
4. Please select the access point you want to connect, and then double click on it or click **"Add to Profile"**.
5. If the wireless access point you want to connect does not show here, please click **"Refresh"**.
6. If a password (Network Key) is required to access the wireless access point, please enter it in **"Network key"** (and enter it again in **"Confirm network key"** for confirmation). Click **"OK"** when password is properly inputted.





7. The network adapter will attempt to connect to access point now, this may require few seconds to minutes, please be patient. When the **“Status”** become **“Associated”** in **“General”** tab, your computer is connected to access point you selected. Click **“Close”** to close configuration menu.

NOTE: If you insert the USB wireless network adapter into an USB 3.0 port and connect to an 11ac AP, device driver will perform an auto USB mode switch and shown the message as below photo, or you will heard sounds of USB insert or unplug, this is the normal states.

For advanced settings and other features of this USB wireless network adapter, please refer to user manual enclosed in supplied CD-ROM.

Thank you for purchasing a quality Rosewill Product.

Please register your product at: www.rosewill.com for complete warranty information and future support for your product.

Let us know!

Rosewill Support: techsupport@rosewill.com

Call Center: (800) 575-9885

Web: <http://www.rosewill.com>

