



RNX-N300UB

N300 Wireless USB Adapter



COPYRIGHT & TRADEMARKS

Specifications are subject to change without notice *Rosewill* is a registered trademark of Rosewill Inc. Other brands and product names are trademarks or registered trademarks of their respective holders.

No part of the specifications may be reproduced in any form or by any means or used to make any derivative such as translation, transformation, or adaptation without permission from Rosewill Inc. Copyright © 2015 Rosewill Inc. All rights reserved.

<http://www.Rosewill.com>

FCC STATEMENT



This equipment has been tested and found to comply with the limits for a Class B digital device, pursuant to part 15 of the FCC Rules. These limits are designed to provide reasonable protection against harmful interference in a residential installation. This equipment generates, uses and can radiate radio frequency energy and, if not installed and used in accordance with the instructions, may cause harmful interference to radio communications. However, there is no guarantee that interference will not occur in a particular installation. If this equipment does cause harmful interference to radio or television reception, which can be determined by turning the equipment off and on, the user is encouraged to try to correct the interference by one or more of the following measures:

- Reorient or relocate the receiving antenna.
- Increase the separation between the equipment and receiver.
- Connect the equipment into an outlet on a circuit different from that to which the receiver is connected.
- Consult the dealer or an experienced radio/ TV technician for help.

This device complies with part 15 of the FCC Rules. Operation is subject to the following two conditions:

- 1) This device may not cause harmful interference.
- 2) This device must accept any interference received, including interference that may cause undesired operation.

Any changes or modifications not expressly approved by the party responsible for compliance could void the user's authority to operate the equipment.

Note: The manufacturer is not responsible for any radio or TV interference caused by unauthorized modifications to this equipment. Such modifications could void the user's authority to operate the equipment.

FCC RF Radiation Exposure Statement:

This equipment complies with FCC radiation exposure limits set forth for an uncontrolled environment. End users must follow the specific operating instructions for satisfying RF exposure compliance. This transmitter must not be co-located or operating in conjunction with any other antenna or transmitter. This equipment has been SAR-evaluated for use in hand. SAR measurements are based on a 5mm spacing from the body and that compliance is achieved at that distance.

CE Mark Warning



This is a class B product. In a domestic environment, this product may cause radio interference, in which case the user may be required to take adequate measures.

CONTENTS

Package Contents	1
Chapter 1 Product Overview	2
1.1 Introduction	2
1.2 Features	2
1.3 Hardware Overview.....	3
Chapter 2 Installation.....	4
2.1 Hardware Installation	4
2.2 Software Installation.....	4
Chapter 3 Connect to a Wireless Network	9
3.1 To connect using RWCU.....	9
3.2 To connect using WPS.....	13
3.2.1 PBC (Push Button Configuration) method	13
3.2.2 PIN method	15
3.3 To connect using Windows built-in wireless utility.....	17
3.3.1 In Windows 7.....	17
3.3.2 In Windows 8.....	18
3.3.3 In Windows 8.1.....	19
3.3.4 In Windows XP	22
3.3.5 In Windows Vista.....	24
Chapter 4 Management.....	26
4.1 Profile.....	26
4.1.1 Add a profile	26
4.1.2 Modify a profile	30
4.1.3 Delete a profile	31
4.2 Advanced	31
4.3 About.....	32
Chapter 5 SoftAP Mode	33
Chapter 6 Uninstall Software.....	35
6.1 In Windows XP/Vista/7.....	35
6.1.1 Uninstall the utility software from your PC.....	35
6.1.2 Uninstall the driver software from your PC.....	37
6.2 In Windows 8/8.1.....	37
6.2.1 Uninstall the utility software from your PC.....	37
6.2.2 Uninstall the driver software from your PC	39

Appendix A: Specifications	41
Appendix B: Glossary	42

Package Contents

Please verify that all the package contents below are available.

- One RNX-N300UB N300 Wireless USB Adapter
- Quick Installation Guide
- One Resource CD, including:
 - Rosewill Wireless Configuration Utility (RWCU) and Drivers
 - User Guide
 - Other helpful information

Make sure that the above items are contained in the package. If any of the above items are damaged or missing, please contact your distributor.

 **Note:**

The 'adapter' mentioned in this User Guide stands for RNX-N300UB N300 Wireless USB Adapter without any explanation.

Chapter 1 Product Overview

1.1 Introduction

The adapter is a 802.11n client device designed to deliver a high-speed and unrivaled wireless performance for your desktop. With a faster wireless connection, you can get a better Internet experience, such as downloading, gaming, video streaming.

With the 802.11n technology, higher throughput improvements using MIMO (multiple input, multiple output antennas), the adapter's auto-sensing capability allows high packet transfer rate of up to 300Mbps for maximum throughput. It has good capability on anti-jamming, and it can also interoperate with other wireless (802.11b) products. The adapter supports WEP, WPA and WPA2 encryption to prevent outside intrusion and protect your personal information from being exposed.

The adapter is easy to install and manage with the Quick Setup Wizard guiding you step-by-step through the installation process and the Rosewill Wireless Configuration Utility instructing you to quickly set up a wireless connection.

With unmatched wireless performance, reception, and security protection, the adapter is the best choice for easily adding or upgrading wireless connectivity to your desktop.

1.2 Features

- Complies with IEEE 802.11n, IEEE 802.11g, IEEE 802.11b standards
- Supports WPA/WPA2 data security, IEEE802.1x authentication, TKIP/AES encryption, WEP encryption
- Supports high rate of up to 300Mbps for maximum throughput, supports automatically adjust to lower speeds due to distance or other operating limitations
- Provides USB 2.0 interface
- Supports Ad Hoc and Infrastructure modes
- Good capability on anti-jamming
- Supports roaming between access points when configured under Infrastructure mode
- Easy to configure and provides monitoring information
- Supports Windows XP, Windows Vista, Windows 8, Windows 8.1 and Windows 7
- Provides internal antennas.

1.3 Hardware Overview

LED status:

Status	Working Status
Off	The driver has not been installed; The adapter's radio has been disabled.
Flashing Slowly	The driver has been installed but no data is being transmitted or received.
Flashing Quickly	Data is being transmitted or received.

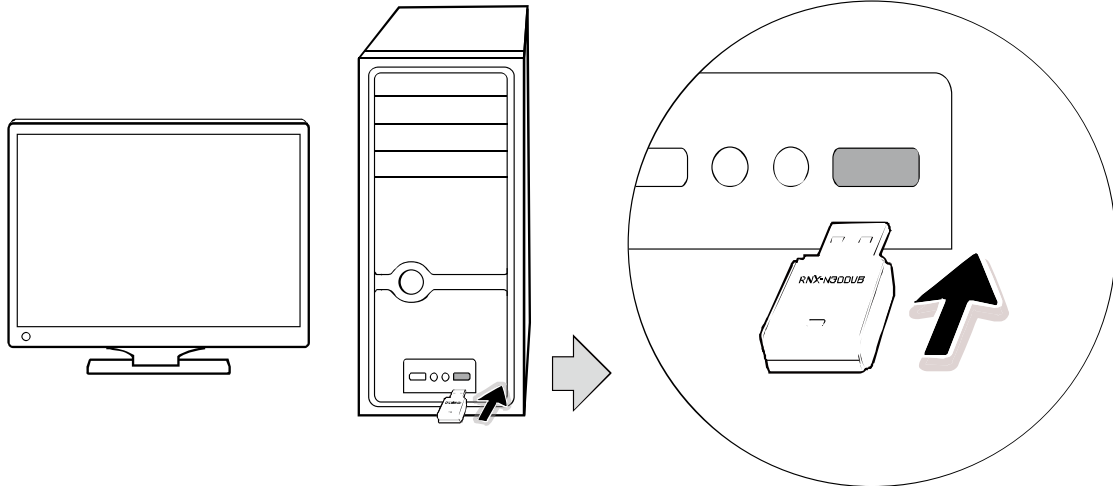
 **Note:**

When the card failed to connect to a wireless network, the LED may be off. Please choose your network and try to connect again.

Chapter 2 Installation

2.1 Hardware Installation

Plug the adapter into an available USB interface on your computer directly.



Note:

The prompted Found New Hardware Wizard screen will pop up when the adapter is installed correctly. Click **Cancel**.

2.2 Software Installation

The adapter's Setup Wizard will guide you through the installation procedures for Windows 7, Windows 8, Windows 8.1, Windows Vista, and Windows XP. The procedures in different systems are quite similar, therefore here takes the procedures in Windows 7 for example.

1. Insert the Resource CD into your CD-ROM drive and then go to **My Computer**. Double-click **CD-ROM RNX-N300UB**, and you will see the window as shown in Figure 2-1. Double-click **Setup.exe** to start the installation.

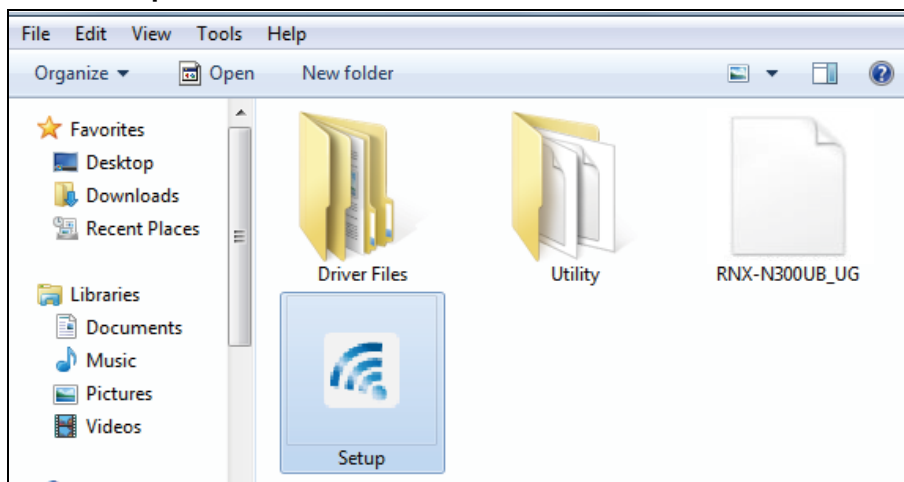


Figure 2-1

2. The **InstallShield Wizard** window will appear. Click **Next** to continue.

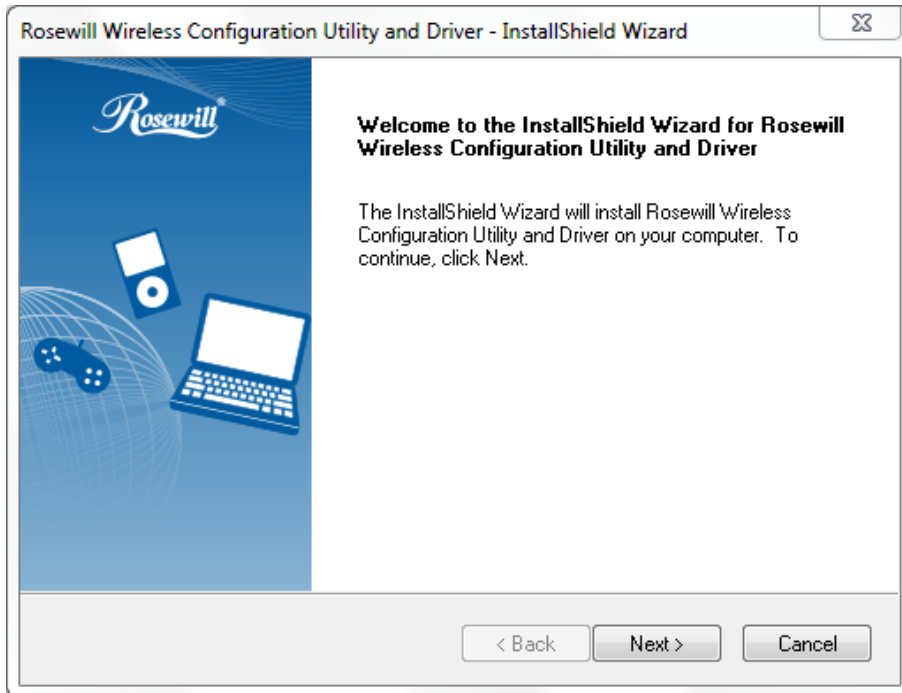


Figure 2-2

Note:

In Windows 8.1, the InstallShield Wizard will skip step 3 and step 4 to step 5.

3. Choose a setup type. It is recommended to select **Install Rosewill Wireless Configuration Utility and Driver**. Selecting **Install Driver Only** will only install driver. Click **Next** to continue.

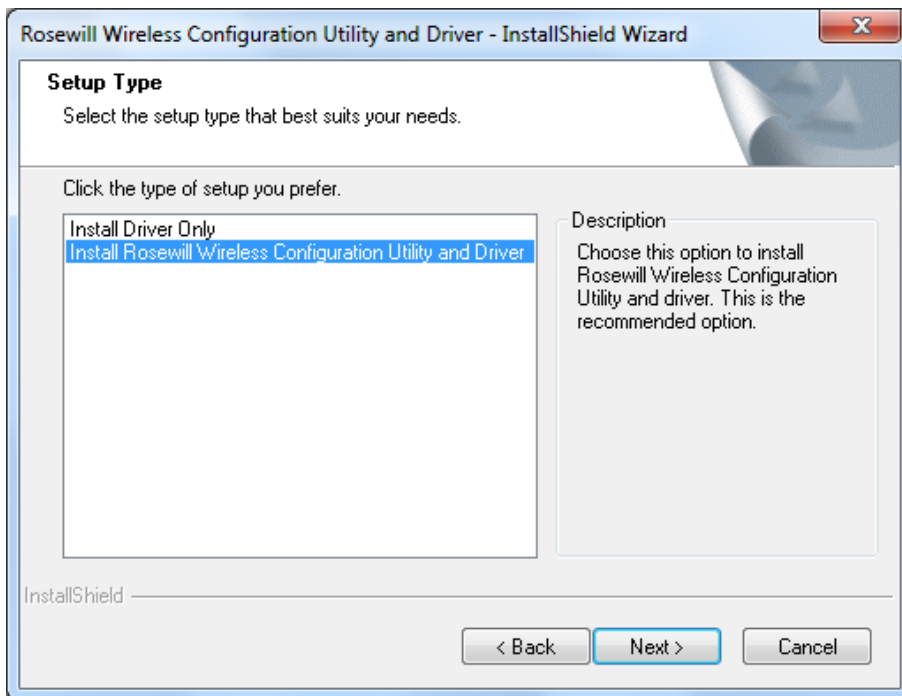


Figure 2-3

4. Click **Change...** to specify the destination location for the software or you can leave it default. Click **Next** in the screen below to continue.

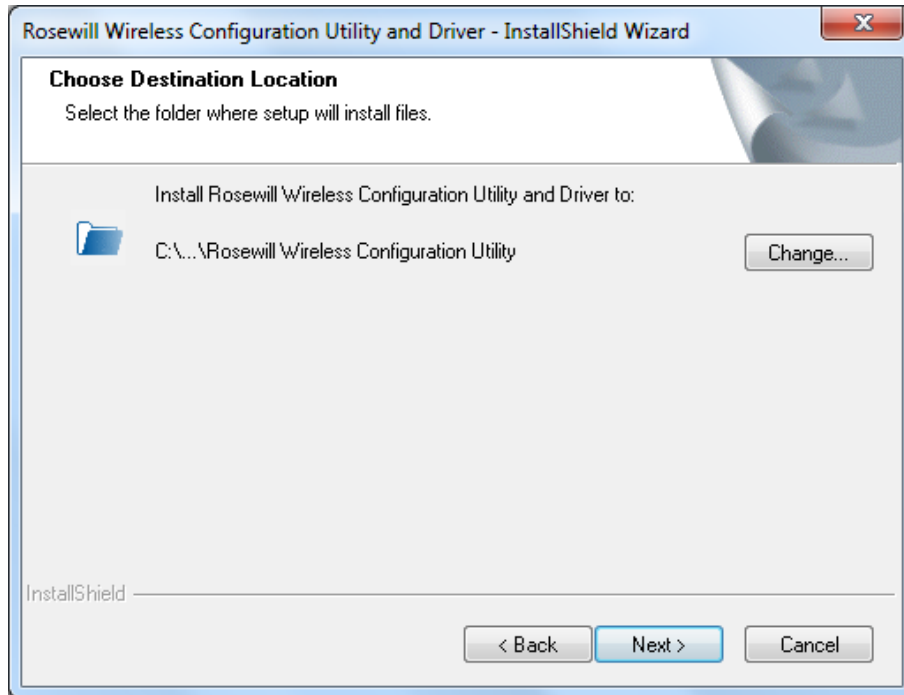


Figure 2-4

5. Click **Install** to continue the setup.

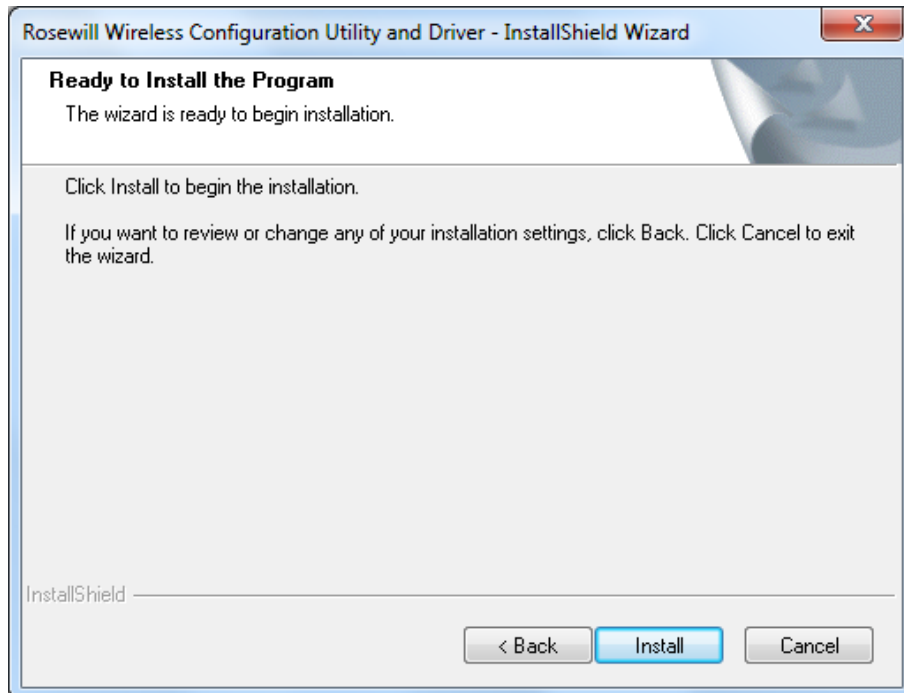


Figure 2-5

- The installation will begin. This may take 1-2 minutes.

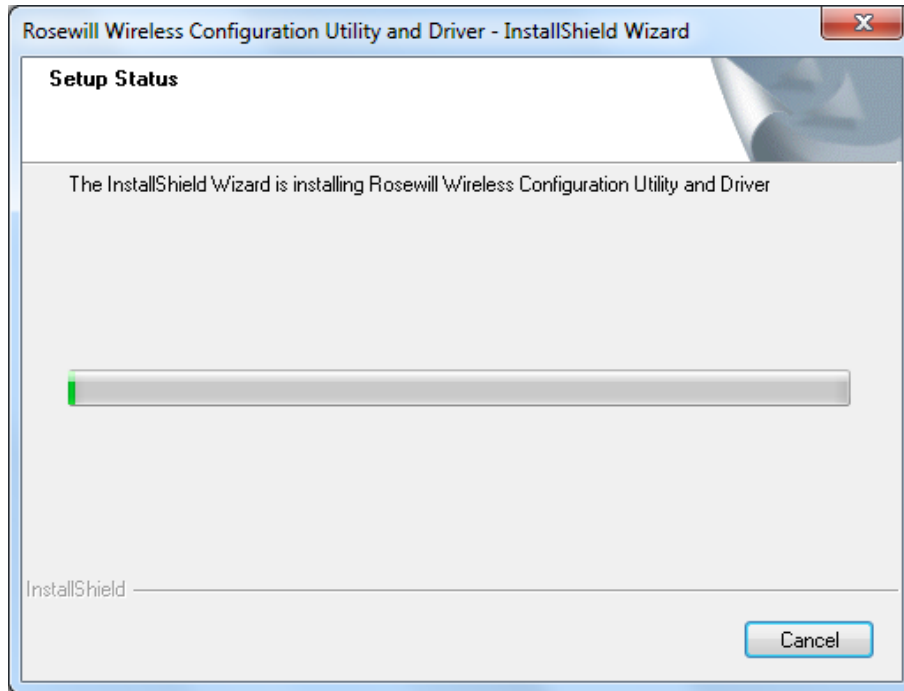


Figure 2-6

- After all the steps above, you will see the screen below. Click **Finish** to complete the setup.

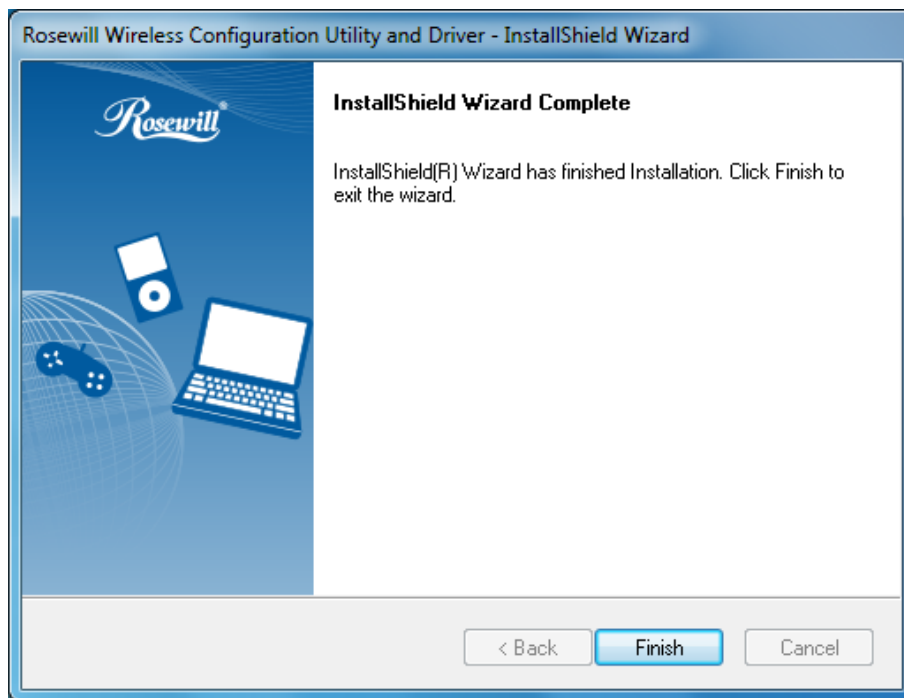



Figure 2-7

- After installation, the utility configuration page will automatically pop up as shown in the following figure and the icon  will appear in your system tray. To connect to a network, please refer to [Chapter 3 Connect to a Wireless Network](#).

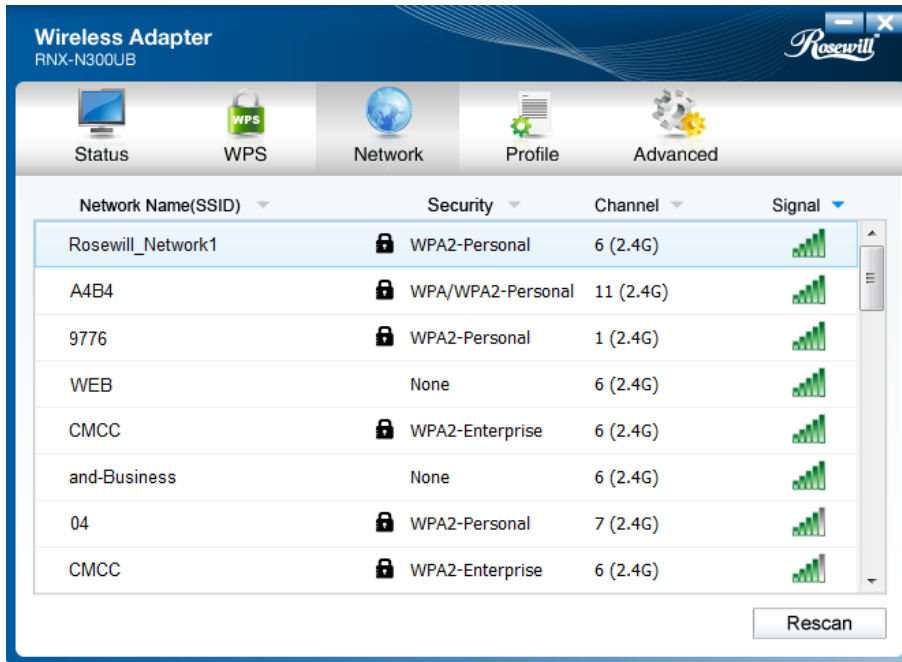


Figure 2-8

Chapter 3 Connect to a Wireless Network

With both the hardware and software successfully installed into your computer, you can quickly connect to a wireless network using one of the following methods.

 **Note:**

For Windows 8.1, Rosewill Wireless Configuration Utility is not supported, please connect to a wireless network using Windows built-in wireless utility.

➤ Method One:

To connect using RWCU (Rosewill Wireless Configuration Utility)

RNX-N300UB uses the Rosewill Wireless Configuration Utility as the management software. The utility provides you an easy interface to connect to a network and to change any settings related to the wireless adapter.

➤ Method Two:

To connect using WPS



By this method, you can connect to your network quickly on the condition that your router or access point supports QSS or WPS as is called by some other brands.

➤ Method Three:

To connect using Windows built-in wireless utility

Windows users may use the built-in wireless utility to connect to a wireless network. For specific operations, please go to [To connect using Windows built-in wireless utility](#).

3.1 To connect using RWCU

1. After installation, the utility configuration page will automatically pop up on the screen. If the utility page does not pop up, you can also launch the utility by double-clicking on the  icon on your desktop or the  icon in your system tray.

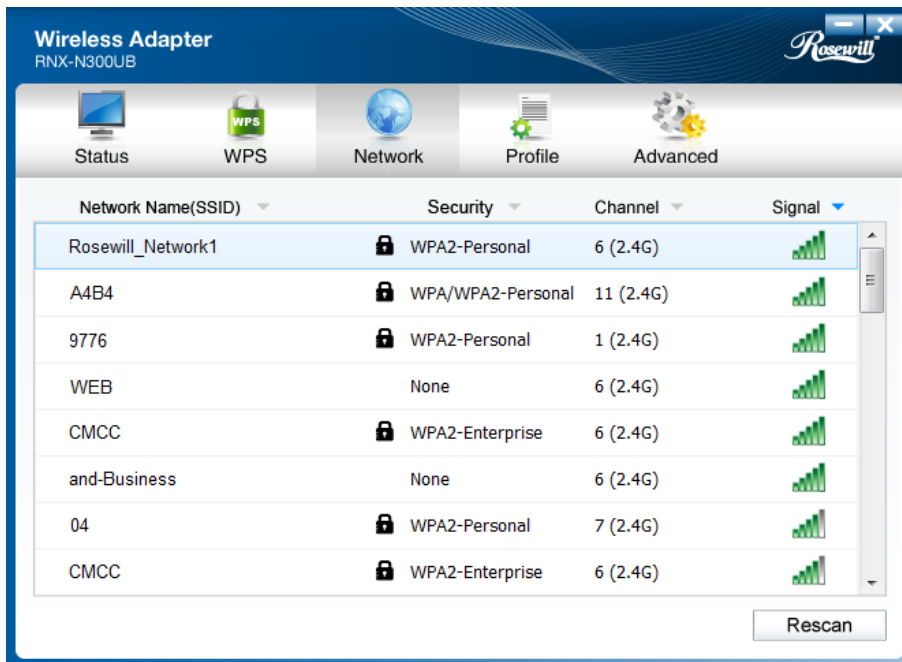


Figure 3-1

- The **Network** page will display all wireless networks that are available in your area. To connect to a network, simply highlight the wireless network name (SSID) and click **Connect**. If you tick **Connect automatically**, the adapter will automatically connect to your target network next time.

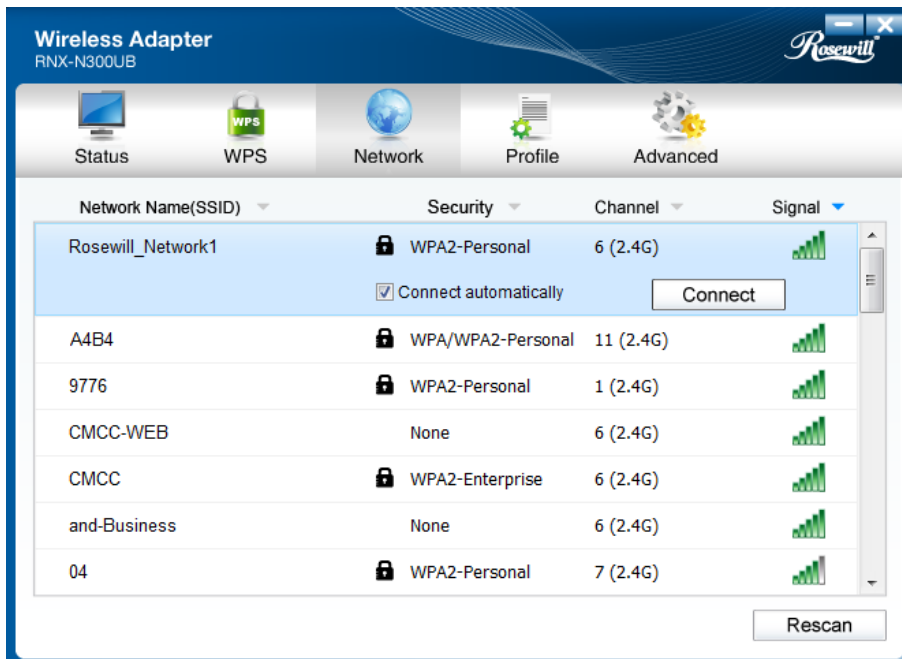


Figure 3-2

- You will be prompted different windows when you choose wireless network of different security types.
 - Wireless network of **WPA/WPA2-Personal**
 If you selected a wireless network of the security type WPA/WPA2-Personal, you will be prompted to enter the password in the security key field, as shown in Figure 3-3. Or you can push the **WPS/QSS** button on your Router (if it features the WPS/QSS function) to

quickly build a connection without entering the security key (password).



Figure 3-3

Note:

The security key (password) can be found on the configuration page of your Router or Access Point.

2) Wireless network of **WPA/WPA2-Enterprise**

If you selected a wireless network of the security type WPA/WPA2-Enterprise, you will be prompted to choose a type of authentication, either **certificate** or **password**. With **Certificate** as your authentication, you need to select one specific certificate from the drop-down list, as shown in Figure 3-4. With **Password** as your authentication, you should enter the right user name and password in the corresponding field, as shown in Figure 3-5.

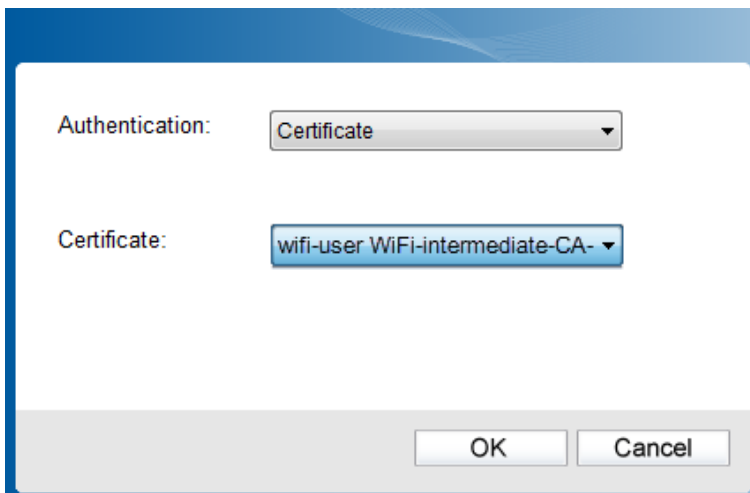


Figure 3-4

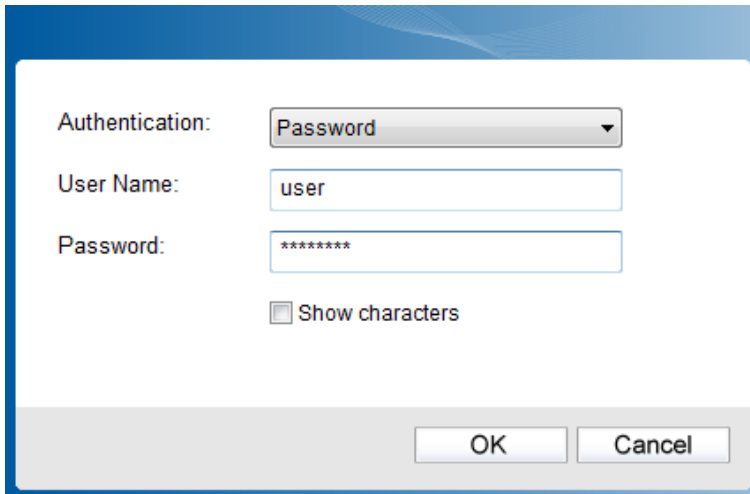


Figure 3-5

- 3) Wireless network of **None**
If you selected a wireless network of **None** (that is, no security is set.), you can get directly connected to this network without any further configuration.
4. Please wait a few minutes for the connection process.

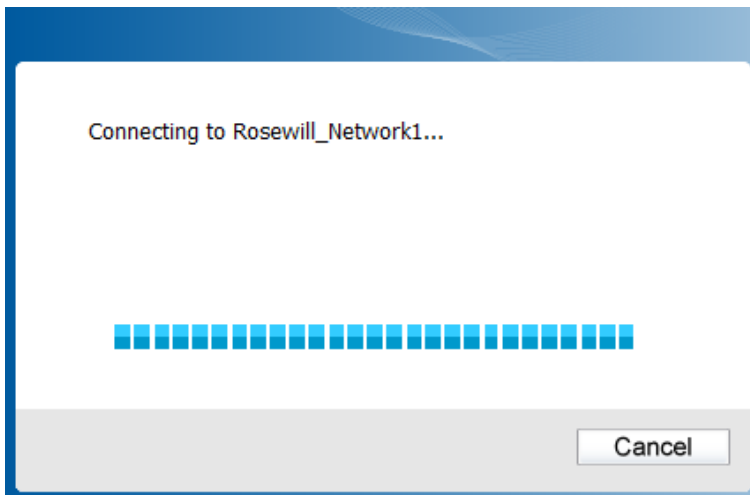


Figure 3-6

5. You have now successfully connected to your network. Click **Close** to enjoy the Internet.

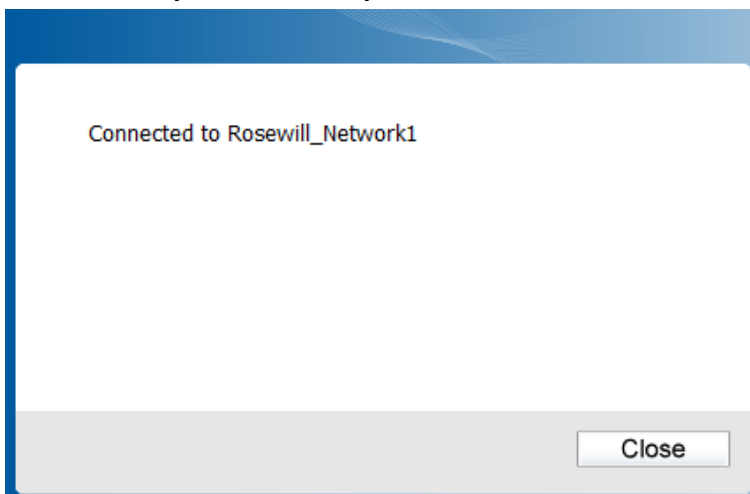


Figure 3-7

6. To view more information about the network currently connected, click **Status** in the tools section and the page will display information such as the network type, link quality and wireless mode.

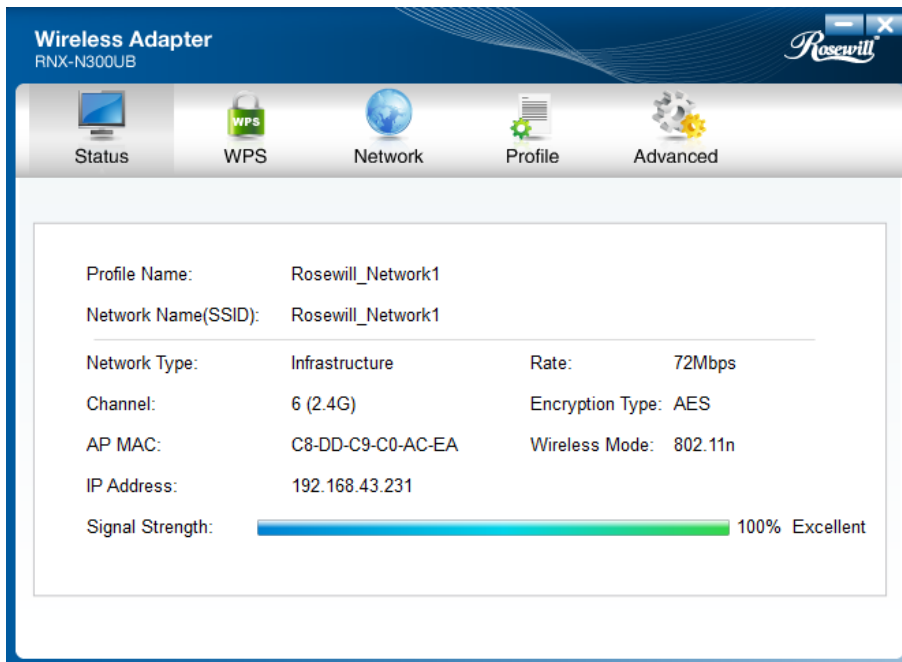


Figure 3-8

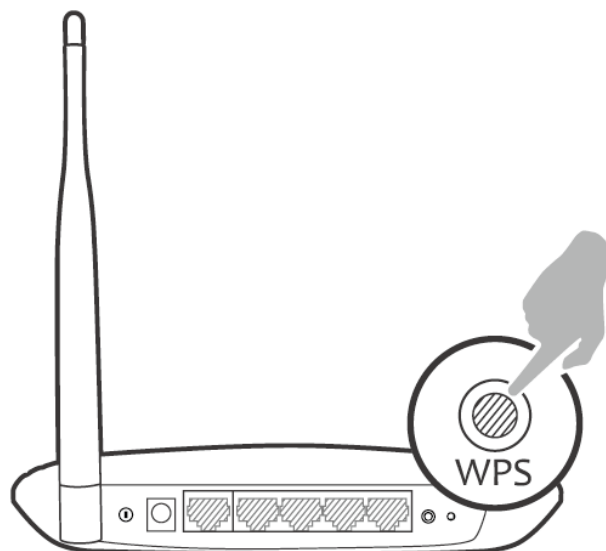
3.2 To connect using WPS

WPS (Wi-Fi Protected Setup) function allows you to add a new wireless device to an existing network quickly.

If the wireless router supports WPS (Wi-Fi Protected Setup) or QSS, you can establish a wireless connection between wireless card and router using either Push Button Configuration (PBC) method or PIN method.

3.2.1 PBC (Push Button Configuration) method

1. Press the WPS or QSS button on the Router for 2-3 seconds.



Wireless N Router

2. Open RWCU and click **WPS** tab. Select **Push the button on my access point or wireless router** and then click **Connect**.



Figure 3-9

3. The adapter will be connecting to the target network.

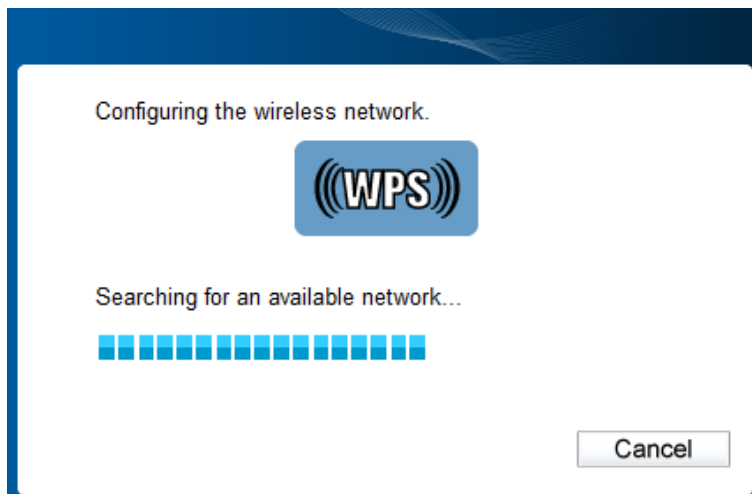


Figure 3-10

- When the following window appears, you have successfully connected to the network.

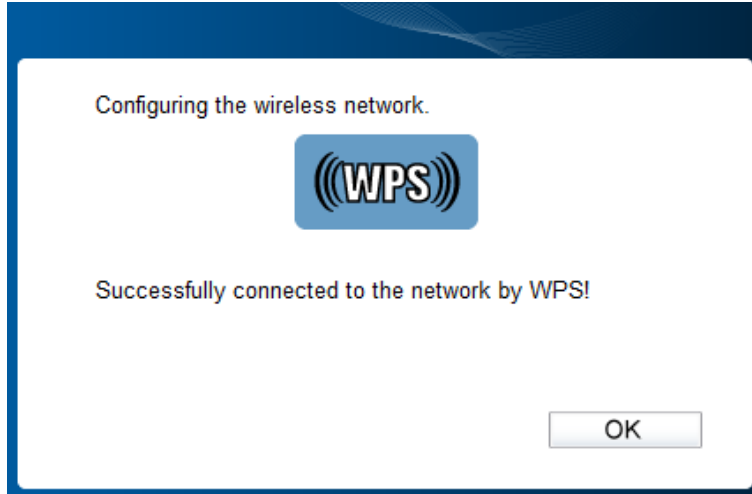


Figure 3-11

3.2.2 PIN method

There are two ways to configure the WPS by PIN method:

- Enter the PIN from your AP device.
- Enter a PIN into your AP device.

Following are detailed configuration procedures of each way.

3.2.2.1. Enter the PIN from your AP device

- Open RWCU and click **WPS** tab. Select **Enter the PIN of my access point or wireless router**. In the empty field beside PIN, enter the PIN labeled on the bottom of the router (here takes 13492564 for example). If you have generated a new PIN code for your router, please enter the new one instead. Click **Connect** to continue.

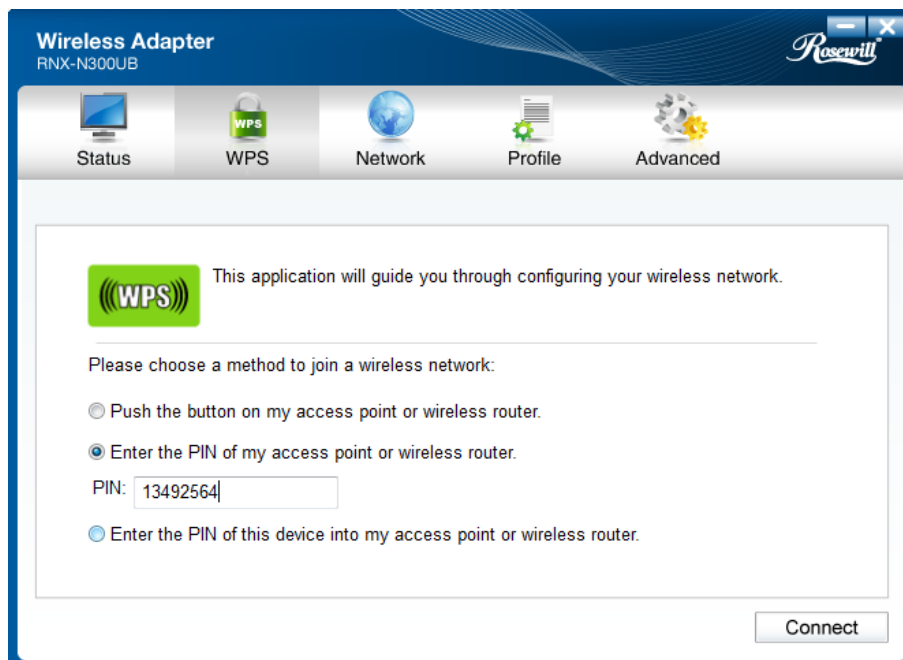


Figure 3-12

- The adapter will be connecting to the target network.

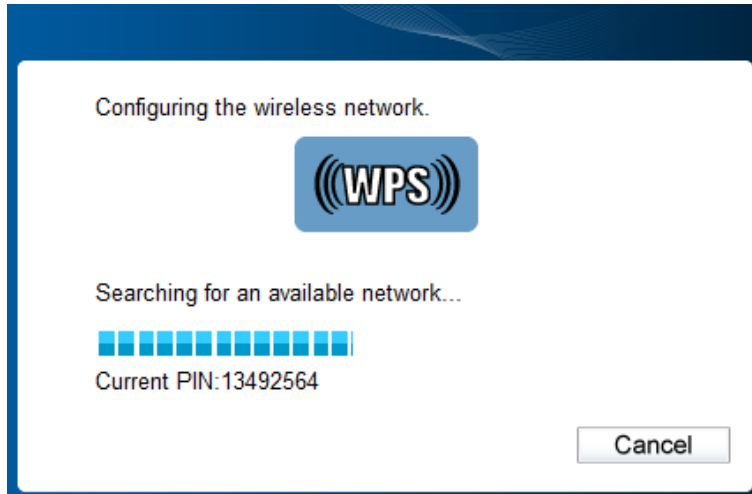


Figure 3-13

- When Figure 3-11 appears, you have successfully connected to the network.

3.2.2.2. Enter a PIN into your AP device

- Open RWCU and click **WPS** tab. Select **Enter the PIN of this device into my access point or wireless router**. In the field beside PIN, you will see the PIN value of the adapter which is randomly generated. Click **Connect** to continue.

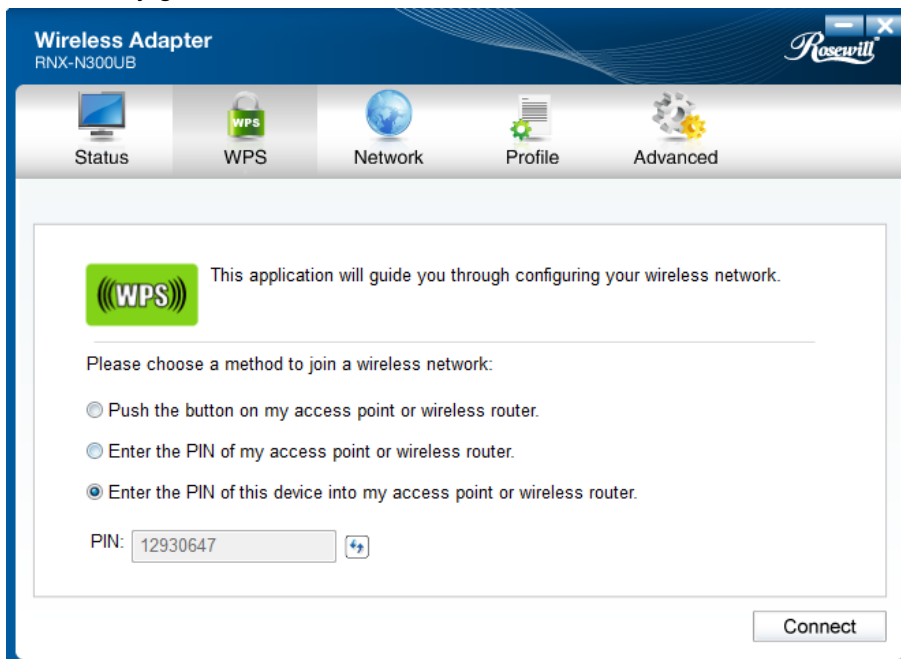


Figure 3-14

- Enter the PIN code of the adapter (here takes 12930647 in the screen for example) into the configuration utility of the Access Point. For the detailed instructions of the Access Point configuration, please refer to the User Guide of the Access Point.

- When the following window appears, the configuration is completed.

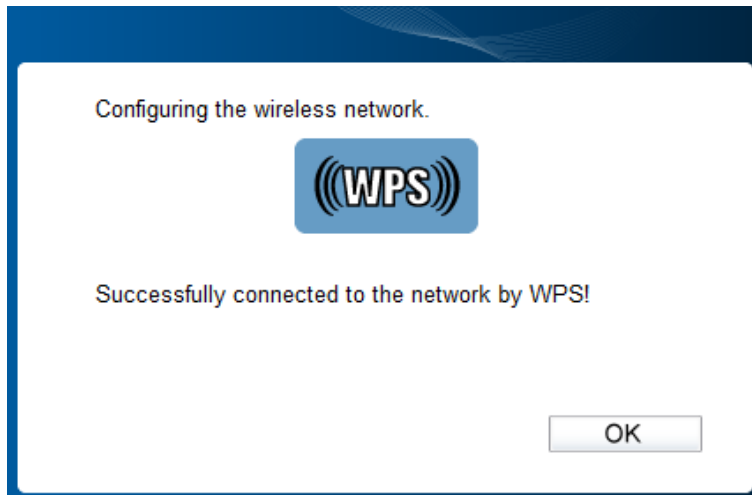



Figure 3-15

3.3 To connect using Windows built-in wireless utility

3.3.1 In Windows 7

Windows 7 users may use the built-in wireless utility. Follow the steps below.

- Left-click the wireless icon  in your system tray (lower-right corner). The utility will display any available wireless networks in your area. Highlight the wireless network (displayed using the SSID) to be connected and then click **Connect**.
- If the network you would like to connect is security-enabled, enter the same security key or passphrase that is on your router. Or push the WPS/QSS button on the router or access point (You will be prompted to push the button on the window if WPS function is supported as shown in the figure below). If the network to be connected is not secure, the connection will be built without entering a key.

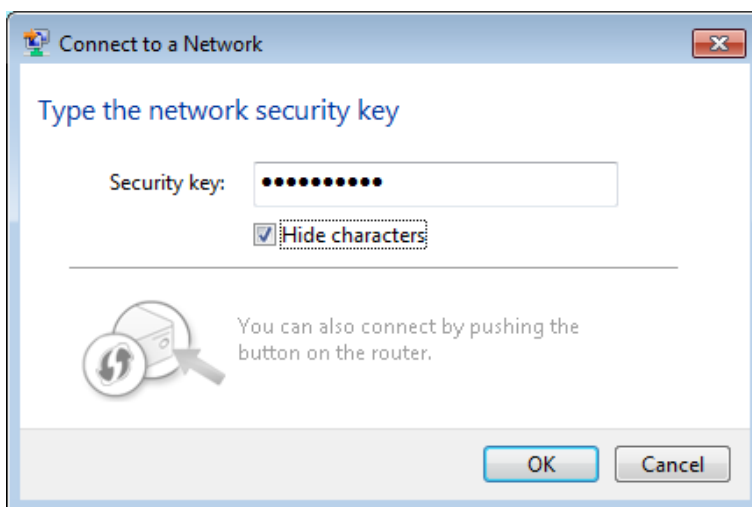



Figure 3-16

- When **Connected** appears behind the SSID, you have successfully connected to the target network.

3.3.2 In Windows 8

Windows 8 users may use the built-in wireless utility. Follow the steps below.

1. Click the icon  at the bottom of your screen, and a network list will appear at the right side of your screen. Select your target network, and then click **Connect**.

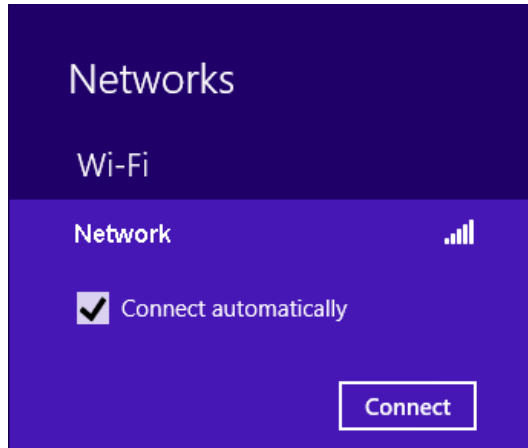


Figure 3-17

2. If the network is unencrypted, you will directly connect to it. If the network is encrypted, enter the password (network security key) and then click **Next** to continue.

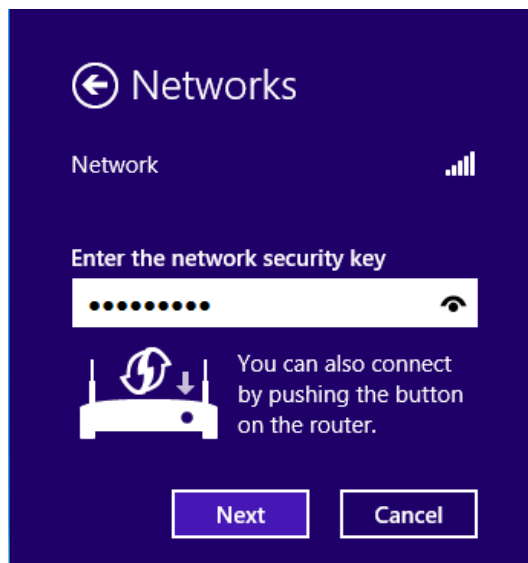


Figure 3-18

 **Note:**

You can also push the WPS/QSS button on your router as hinted “You can also connect by pushing the button on the router”. Then click **Next** to continue.

3. When Connected appears behind the SSID (as shown below), you have successfully connected to the target network.

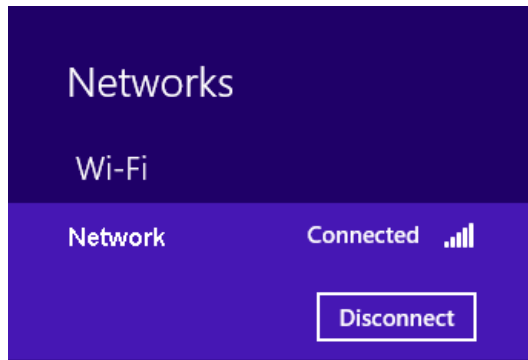


Figure 3-19

Note:

If the adapter is connected to the network for the first time, you will be asked whether to turn on sharing or connect to devices. Please select “Yes, ...” or “No, ...” according to your Internet environment.

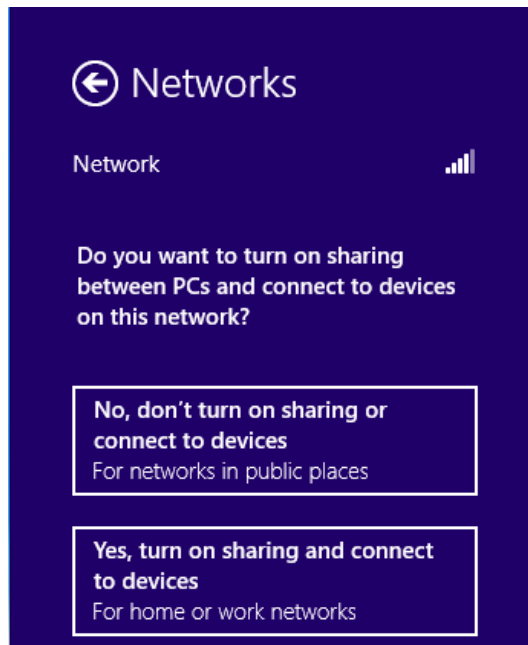



Figure 3-20

3.3.3 In Windows 8.1

Windows 8.1 users may use the built-in wireless utility. Follow the steps below.

1. Click the icon  at the bottom of your screen, and a network list will appear at the right side of your screen. Select your target network, and then click **Connect**.

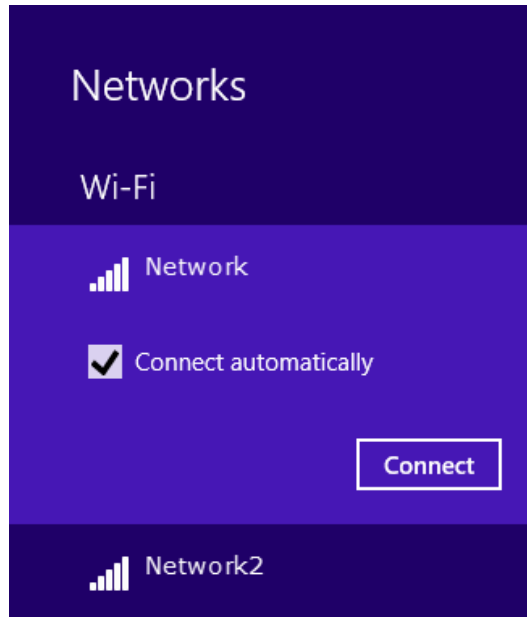


Figure 3-21

2. If the network is unencrypted, you will directly connect to it. If the network is encrypted, enter the password (network security key) and then click **Next** to continue.

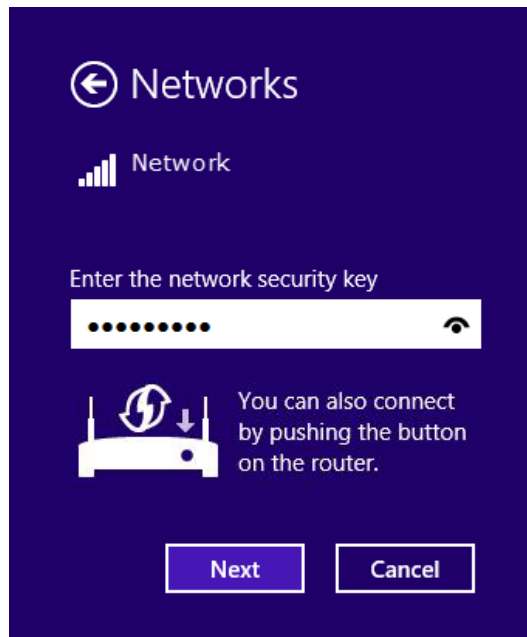


Figure 3-22

 **Note:**

- 1) You can also push the WPS/QSS button on your router as hinted “You can also connect by pushing the button on the router”. Then click **Next** to continue.
- 2) You can also enter the PIN from your router as hinted “Connect using a security key instead”. Then click **Next** to continue.



Figure 3-23

3. When Connected appears behind the SSID (as shown below), you have successfully connected to the target network.

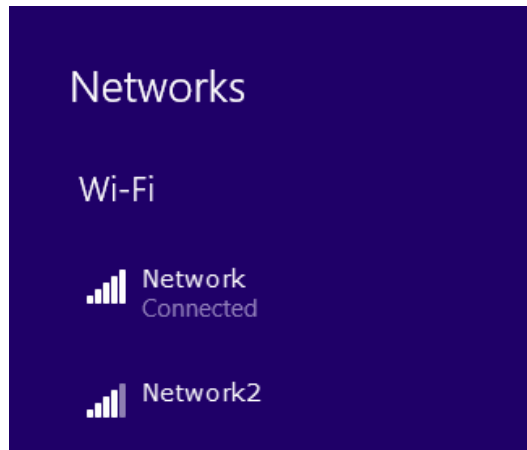


Figure 3-24

Note:

If the adapter is connected to the network for the first time, you will be asked whether to connect to devices. Please select “Yes” or “No” according to your Internet environment.

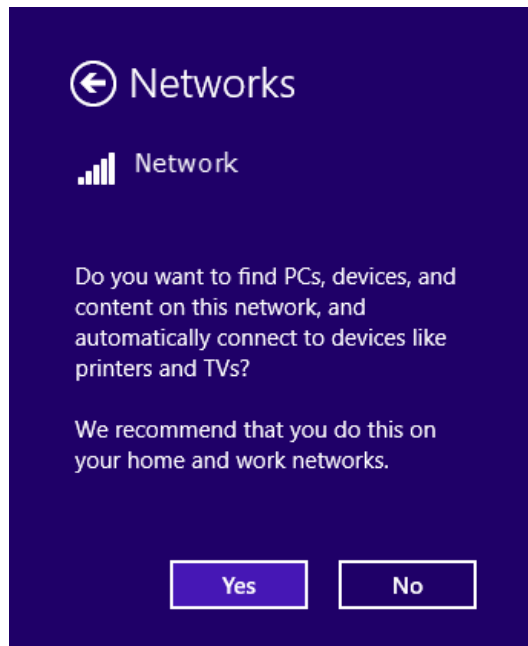


Figure 3-25

3.3.4 In Windows XP

Windows XP users may use the built-in wireless utility. Follow the steps below.

1. Right-click on the utility icon in your system tray (lower-right corner). Select **Switch to Windows wireless configuration tool**.

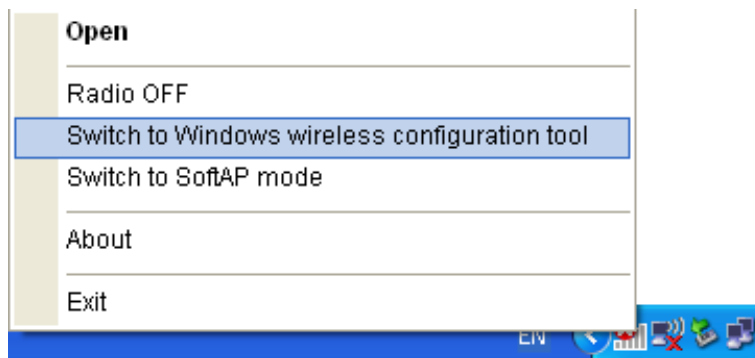


Figure 3-26

Or double-click the utility icon to load the utility configuration page. Click **Advanced** in the tools section and then select **Use Windows wireless configuration tool** in the figure shown below. Click **OK** when Figure 3-28 appears to continue.

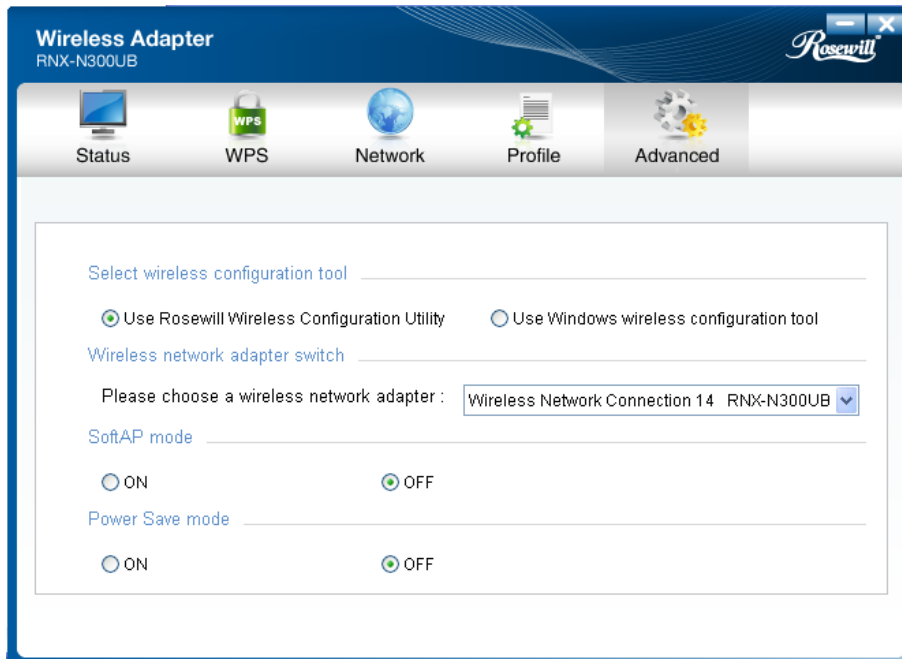


Figure 3-27

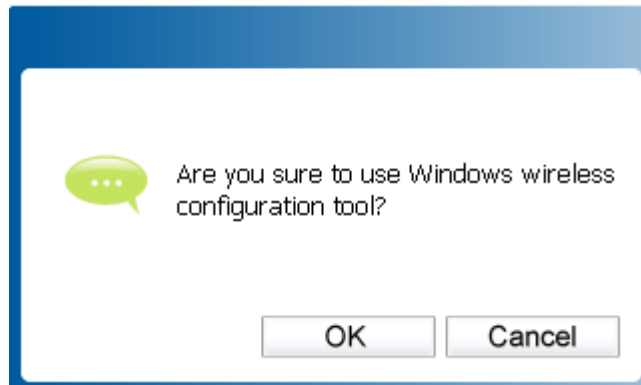


Figure 3-28

2. Right-click on the wireless computer icon in your system tray (lower-right corner). Select **View Available Wireless Networks**.

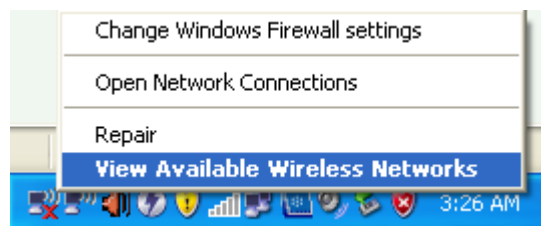


Figure 3-29

3. The utility will display any available wireless networks in your area. Click on a network (displayed using the SSID) and click the **Connect** button.
4. If the network is security-enabled, you will be prompted to enter the key as shown below. If not, you will connect to the network directly without entering a key.

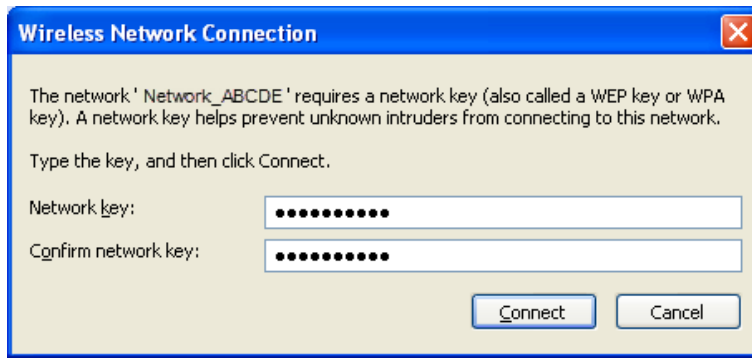


Figure 3-30

3.3.5 In Windows Vista

Windows Vista users may use the built-in wireless utility. Follow the steps below.

1. Open the wireless utility by right-clicking on the wireless computer icon in your system tray as shown in the figure below. Select **Connect to a network**.

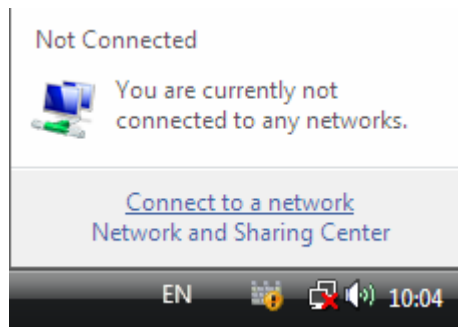


Figure 3-31

2. The utility will display any available wireless networks in your area. Highlight the wireless network you would like to connect and then click **Connect**.

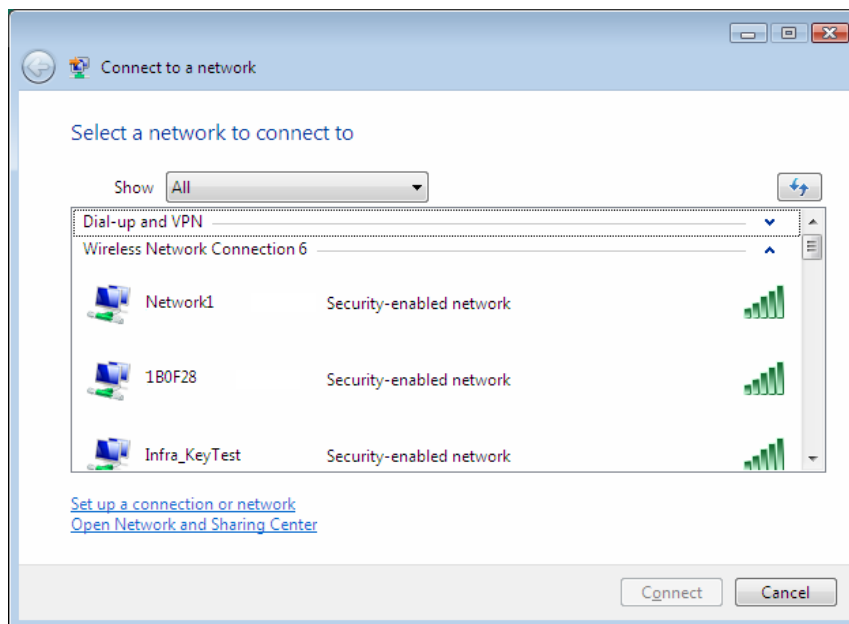


Figure 3-32

3. If the network you would like to connect is security-enabled, enter the same security key or passphrase that is on your router. If the network to be connected is not secure, the connection will be built without entering a key.

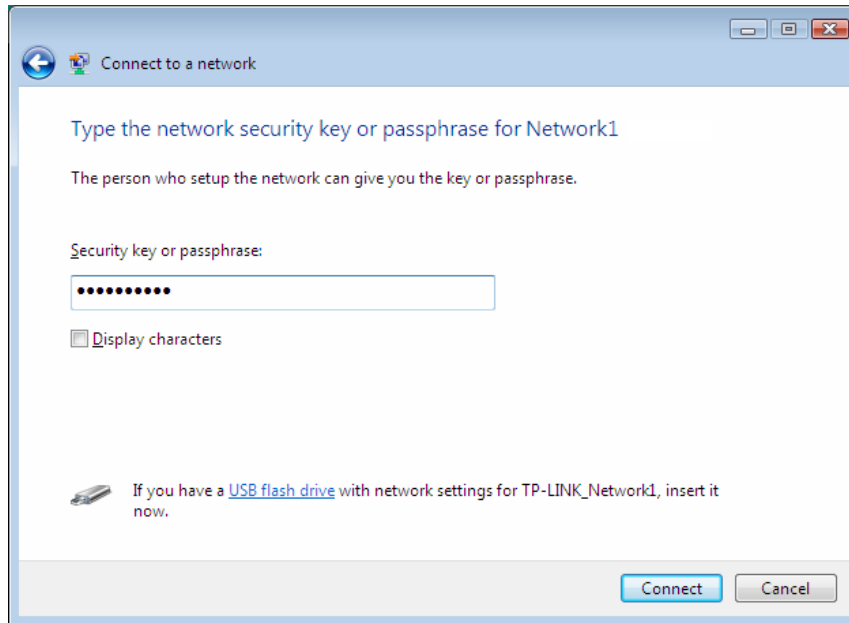


Figure 3-33

4. You have now successfully connected to the network.

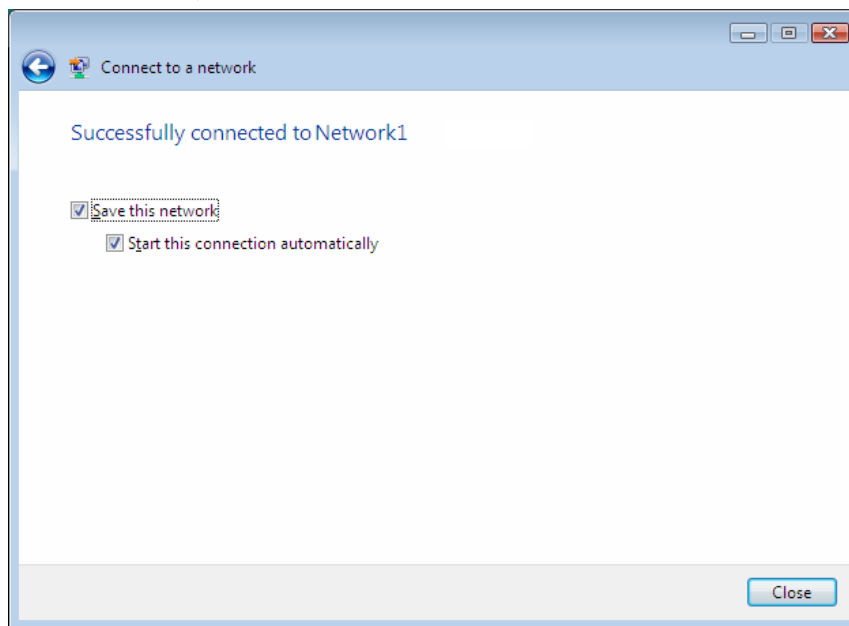



Figure 3-34

Chapter 4 Management

This section will show you how to configure your RNX-N300UB adapter using the Rosewill Wireless Configuration Utility (RWCU).

The RNX-N300UB adapter uses the Rosewill Wireless Configuration Utility as the management software. The utility provides users with an easy interface to change any settings related to the adapter. Double-clicking on the  icon on your desktop will start the utility.

Note:

For Windows 8.1, RWCU is not supported.

4.1 Profile

Your wireless networks may vary in different places like home, office or coffee shop. With **Profile** management, you can easily save and manage various networks to be connected, saving you the trouble of having to repeat the same configurations. Click **Profile** in the tools section, the following page will appear.

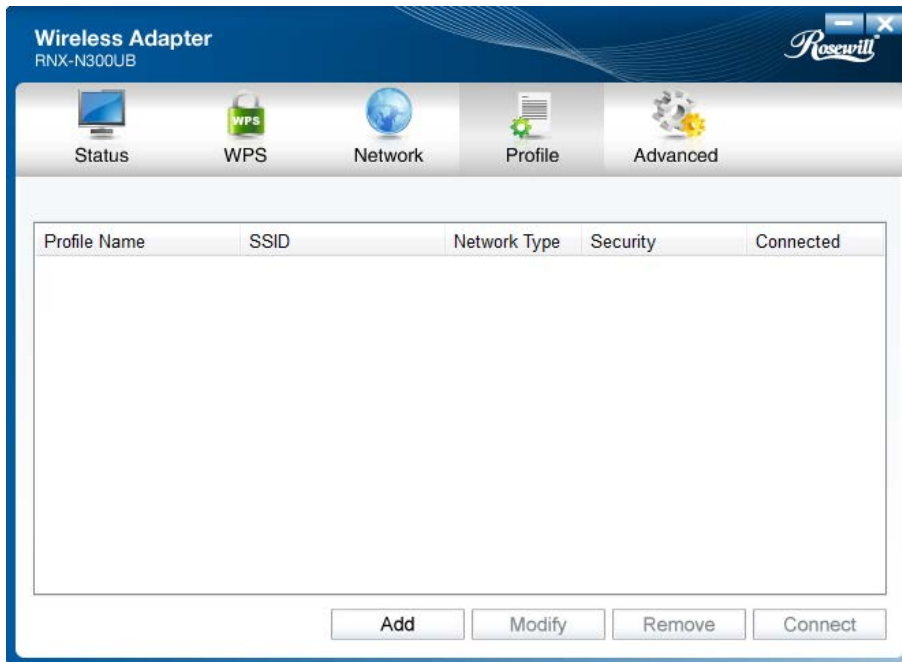
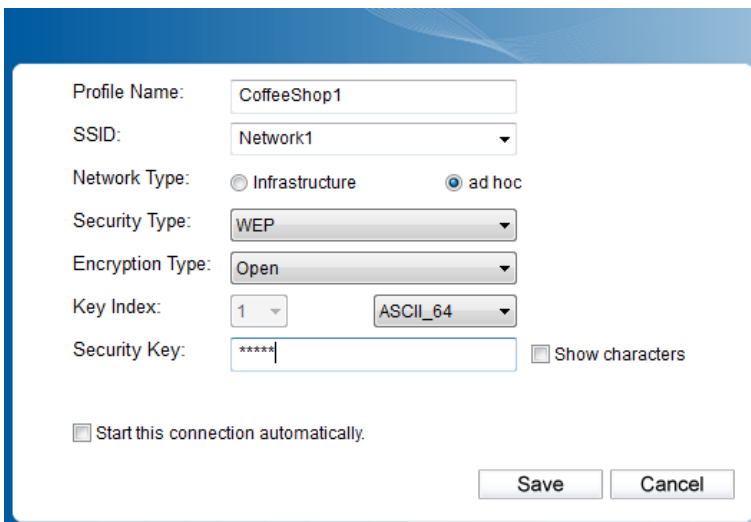


Figure 4-1

4.1.1 Add a profile

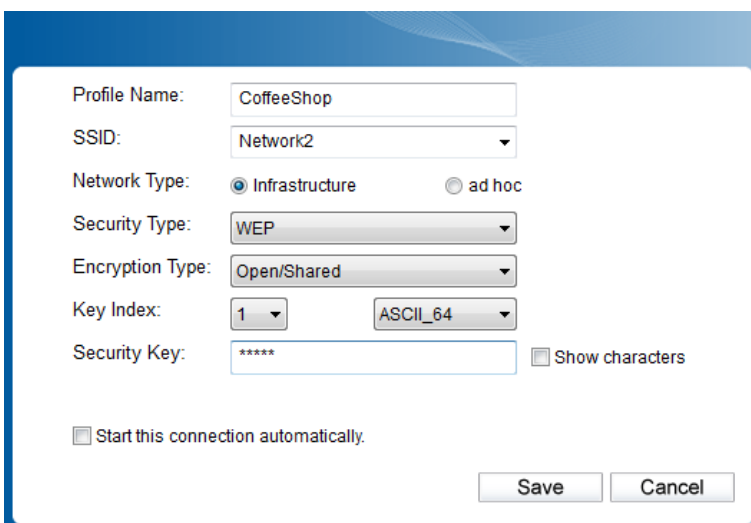
To add a profile, click the **Add** button on the bottom of the screen. Then the configuration window will appear.

If you are connecting to a wireless router or access point, select **Infrastructure** as the Network Type, and if you are connecting to another wireless client such as an adapter, select **ad hoc** as the Network Type. Then, the screen below will appear. Follow the instructions below to finish the setting.



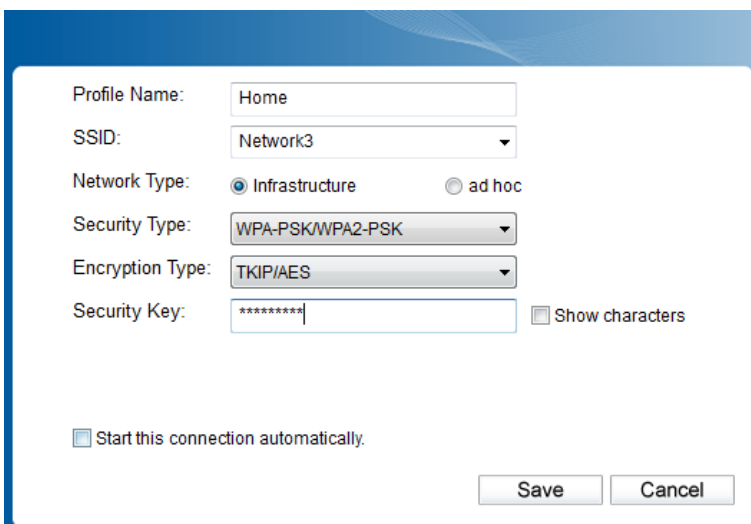
Profile Name: CoffeeShop1
SSID: Network1
Network Type: Infrastructure ad hoc
Security Type: WEP
Encryption Type: Open
Key Index: 1 ASCII_64
Security Key: ***** Show characters
 Start this connection automatically.
Save Cancel

Figure 4-2



Profile Name: CoffeeShop
SSID: Network2
Network Type: Infrastructure ad hoc
Security Type: WEP
Encryption Type: Open/Shared
Key Index: 1 ASCII_64
Security Key: ***** Show characters
 Start this connection automatically.
Save Cancel

Figure 4-3



Profile Name: Home
SSID: Network3
Network Type: Infrastructure ad hoc
Security Type: WPA-PSK/WPA2-PSK
Encryption Type: TKIP/AES
Security Key: ***** Show characters
 Start this connection automatically.
Save Cancel

Figure 4-4

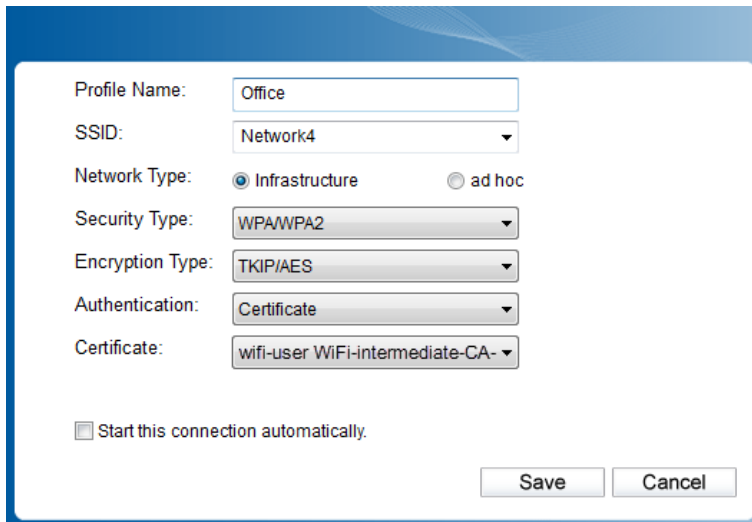


Figure 4-5

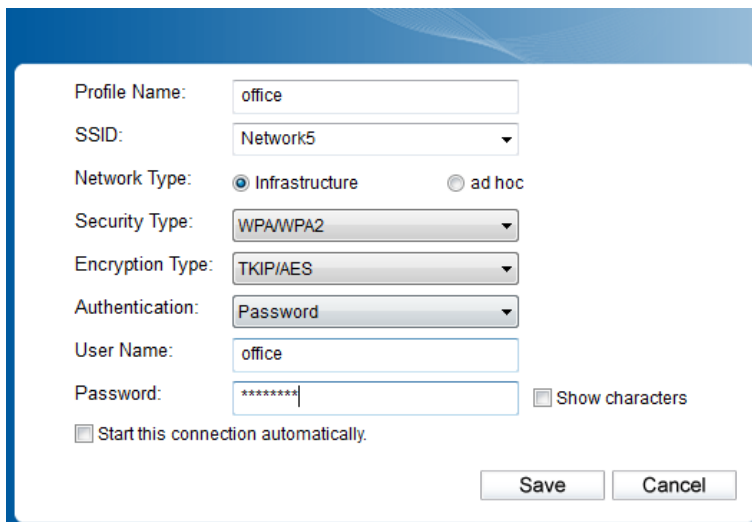


Figure 4-6

The following items can be found on the screen.

- **Profile Name:** Enter a name for your profile (e.g. CoffeeShop, Home, Office). The same name is not allowed. Please also note that no space is allowed between words.
- **SSID:** Select the target network from the drop-down list.
- **Network Type:** Select the network type. If you are connecting to a wireless router or access point, select **Infrastructure**. If you are connecting to another wireless client such as an adapter, select **ad hoc**.
- **Security Type:** Select the security type from the list. In **Infrastructure** mode, four options are available: **WPA-PSK/WPA2-PSK**, **WPA/WPA2**, **WEP** and **None**. In **ad hoc** mode, two options are available: **WEP** and **None**. The security type should be the same as on your router or access point, otherwise, you will not be able to build a successful connection. **WPA-PSK/WPA2-PSK** uses a passphrase or key to authenticate your wireless connection. The key must be the exact same key entered on your wireless router or access point. **None** stands for no security. In **Infrastructure** mode, it is recommended to enable **WPA-PSK/WPA2-PSK** on your wireless router or access point before configuring your

wireless adapter. While in **ad hoc** mode, it is recommended that you select **WEP** to secure your wireless network.

 **Note:**

In **Infrastructure** mode, you will see Figure 4-3 if you selected the security type **WEP**; you will see Figure 4-4 if you selected the security type **WPA-PSK/WPA2-PSK**. While, if you selected the security type **WPA/WPA2** (-Enterprise), Figure 4-5 or Figure 4-6 will be displayed.

In **ad hoc mode**, you will see Figure 4-2 if you selected the security type **WEP**.

- **Encryption Type:** From the drop-down menu, select the encryption type that is the same as on your router or access point.
- **Key Index:** You can select **ASCII** or **Hexadecimal** format on the right. ASCII format stands for any combination of keyboard characters in the specified length. Hexadecimal format stands for any combination of hexadecimal digits (0-9, a-f, A-F) in the specified length.
 - For **64-bit** encryption - You can enter 10 hexadecimal digits (any combination of 0-9, a-f, A-F, zero key is not permitted) or 5 ASCII characters.
 - For **128-bit** encryption - You can enter 26 hexadecimal digits (any combination of 0-9, a-f, A-F, zero key is not permitted) or 13 ASCII characters.
- **Security Key:** Enter the passphrase exactly as it is on your wireless router or access point. Click the **Show characters** box to see the passphrase. Unchecking it will hide it.
- **Authentication:** Select a type of authentication, either **certificate** or **password**.

 **Note:**

In the security type of **WPA/WPA2** (-Enterprise), you will see Figure 4-5 if you choose certificate as the authentication, you will see Figure 4-6 if you choose password as the authentication.

- **Certificate:** If you select **certificate** as your **Authentication**, then you need to specify your certificate from the drop-down list here.
- **User Name:** Enter the name of the enterprise network.
- **Password:** Enter the password for the enterprise network. Click the **Show characters** box to see the passphrase. Unchecking it will hide it.
- **Start this connection automatically:** check this box to automatically connect to this network next time.
- **Save:** Click **Save** to save your settings.

Having completed the above settings, the Profile page should look like the following figure. To connect to a desired network, just highlight the network you would like to connect to and click the **Connect** button on the bottom of the window. Then click **OK** in Figure 4-8 to activate the profile.

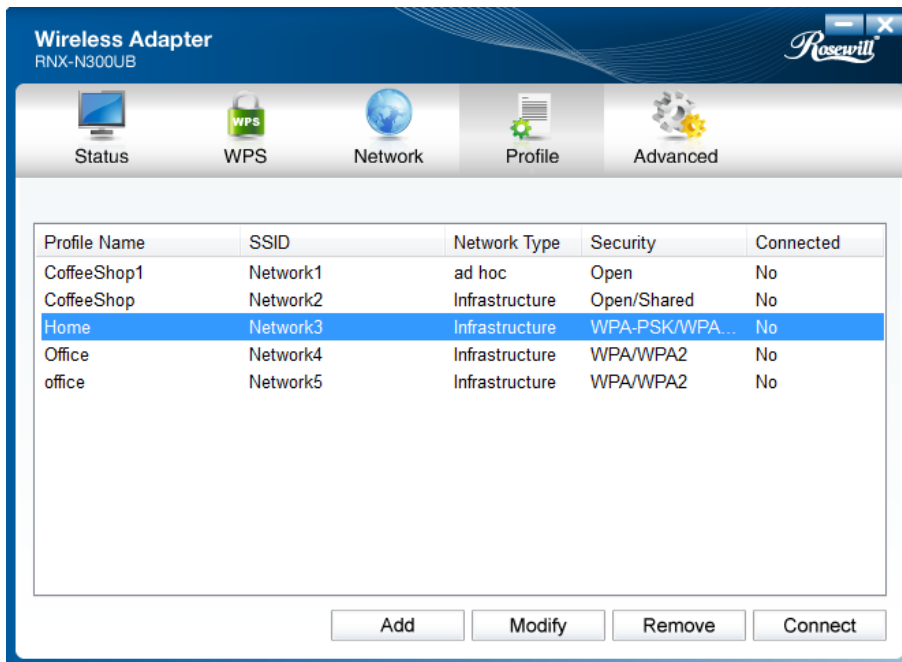


Figure 4-7

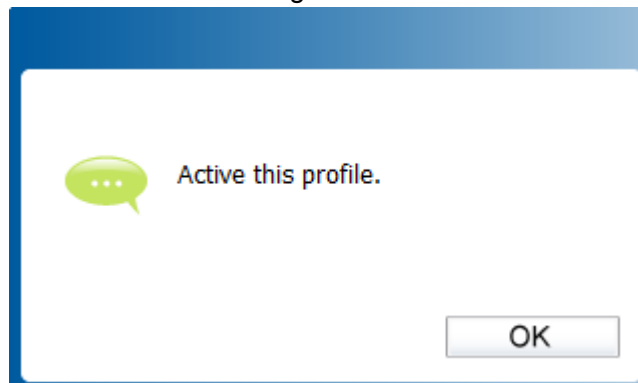


Figure 4-8

4.1.2 Modify a profile

You may edit an existing profile by clicking the **Modify** button from the Profile page. For instance, you may like to change the profile name from Home to Home1 or you may want to specify another SSID for profile Home. After all the changes, click **Save** to make the changes take effect.

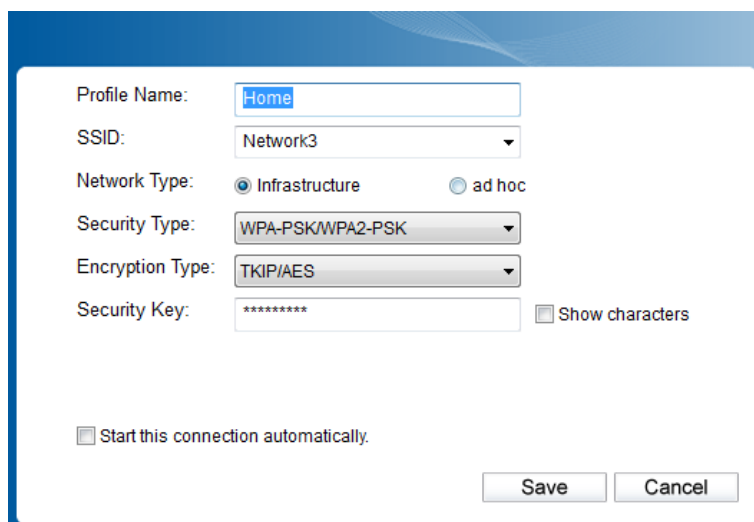


Figure 4-9

4.1.3 Delete a profile

To delete an existing profile, highlight the profile name and click **Remove** on the bottom of the screen or press the Delete button on your keyboard. When the following figure appears, click **OK** to continue.

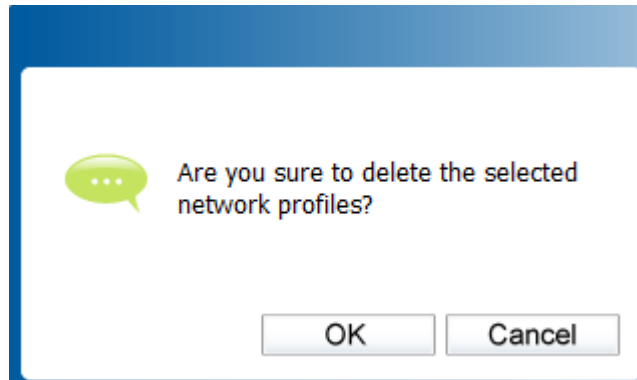


Figure 4-10

4.2 Advanced

The following configurations can be made on the **Advanced** page:

- 1) To select wireless configuration tool.
Here you can decide which tool to use, either the Rosewill Configuration Utility or the Windows wireless configuration tool. (This option is available only in Windows XP.)
- 2) To switch to another wireless network adapter.
Here you can switch to another adapter installed in your computer. The adapters successfully installed in your computer will be listed in the drop-down menu if the adapters are supported by this utility.
- 3) To switch to SoftAP mode.
Once enabled, the adapter will be able to work as an AP.
- 4) To change the power save mode.

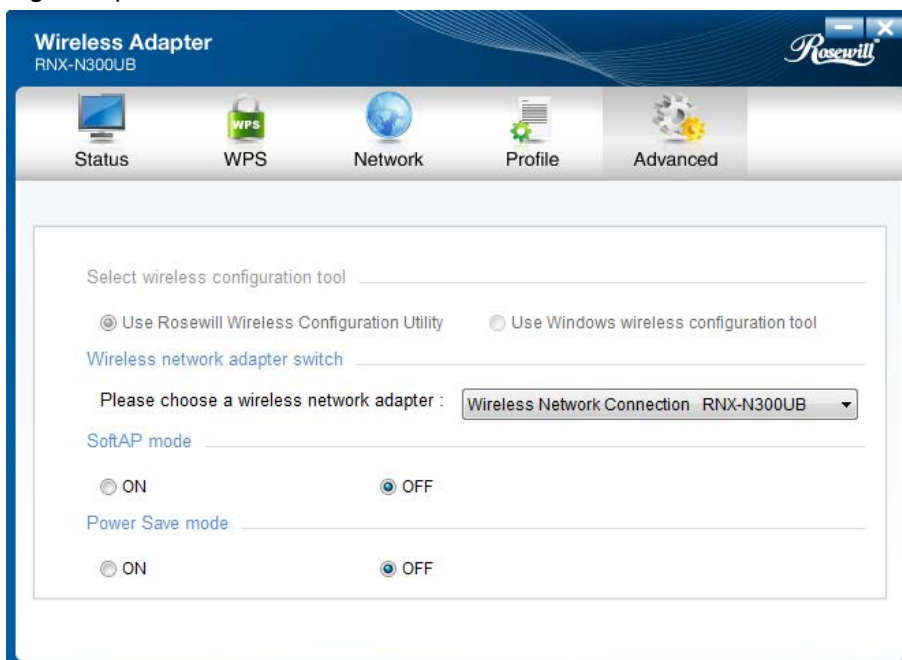



Figure 4-11

4.3 About

The About screen gives you information about the Driver and Utility versions of the adapter. Right-click on the  icon in your system tray and select **About** from the list.

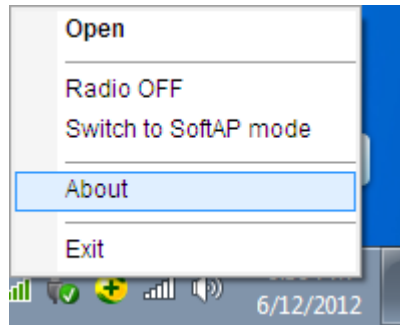


Figure 4-12

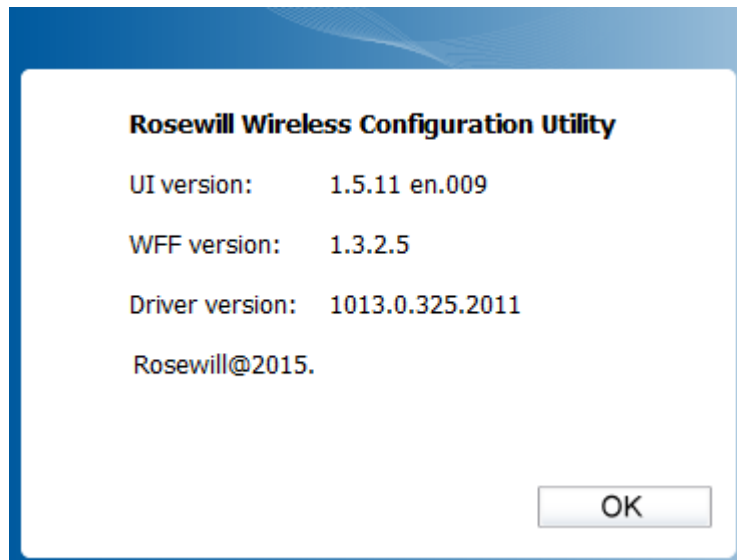


Figure 4-13

Chapter 5 SoftAP Mode

In SoftAP mode, the adapter will work as an AP.

Suppose that only one computer in your house can access the Internet for various reasons like only one LAN port is available on your wired broadband router, however, other wireless-capable devices also want to share the Internet. Then the adapter can be configured as an AP under the SoftAP mode, saving you the trouble of having to get a separate access point or a router.

With this feature, a computer can use a single physical wireless adapter to connect as a client to a hardware access point while at the same time acting as a software AP allowing other wireless-capable devices to connect to it.

To switch to this mode, right-click on the utility icon in your system tray and select **Switch to SoftAP mode**.

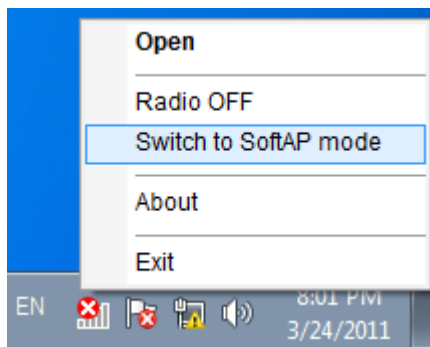


Figure 5-1

Or from the **Advanced** page of the utility, tick **ON** under the SoftAP mode as shown in the following figure. Click **OK** when prompted to confirm the setting.

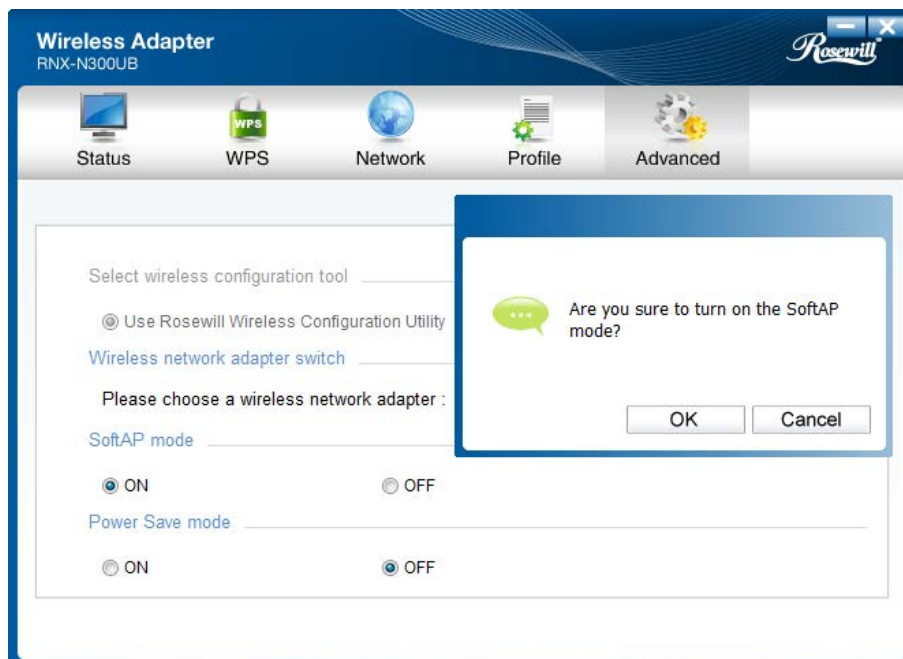


Figure 5-2

The **Soft AP** icon should then appear beside **Advanced** icon in the utility.

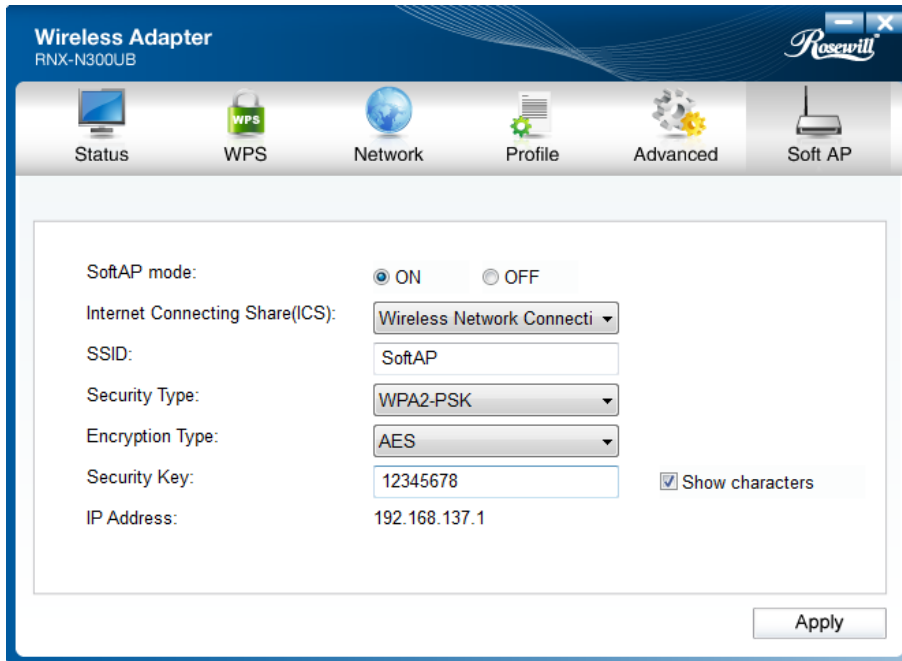


Figure 5-3

- **SoftAP mode:** Select to enable or disable the function.
- **Internet Connecting Share(ICS):** Specify a connection through which devices connected to your AP can access the Internet.
- **SSID:** Enter the name for your soft AP (for example, Jone) so that others can know which AP is yours when trying to connect to it. The default name (SSID) is “SoftAP”.
- **Security Type:** The security type here is set to be WPA2-PSK which is based on 802.11i and uses Advanced Encryption Standard instead of TKIP. It was designed to improve the security features of WEP. WPA2-PSK uses a passphrase or key to authenticate your wireless connection. You needn’t make any configuration here.
- **Encryption Type:** The encryption type here is set to be AES.
- **Security Key:** Enter the Key in the field to make your AP security enabled. It is recommended that you specify another key instead of the default key 12345678. Only by entering the corresponding key can other computers establish a successful connection with your AP.
- **IP Address:** Here displays the IP address of the SoftAP.

Chapter 6 Uninstall Software

6.1 In Windows XP/Vista/7

The software uninstall steps are similar in Windows XP, Windows Vista, and Windows 7, here we take Windows 7 as an example.

6.1.1 Uninstall the utility software from your PC

1. On the Windows taskbar, click the **Start** button, click **All programs**→**Rosewill**, and then click **Uninstall - Rosewill Wireless Configuration Utility**.

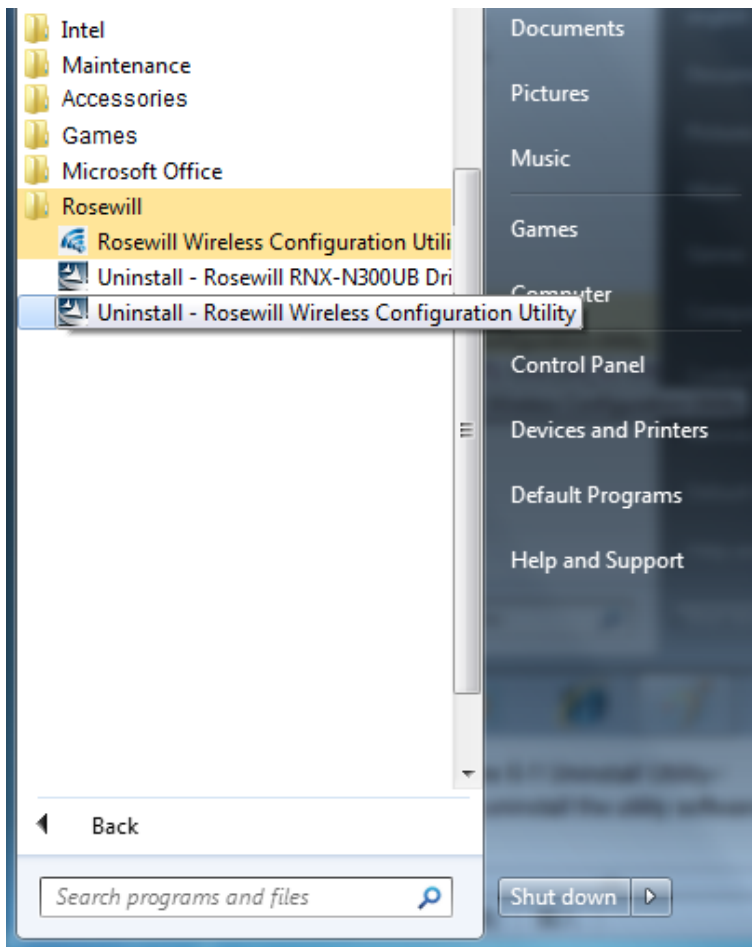


Figure 6-1

2. Follow the InstallShield Wizard to uninstall the utility software from your PC.

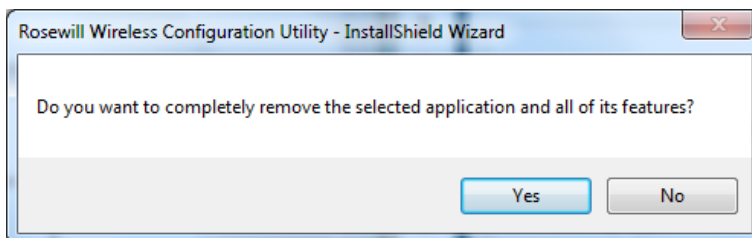


Figure 6-2

3. Click **Finish** when the figure below appears.

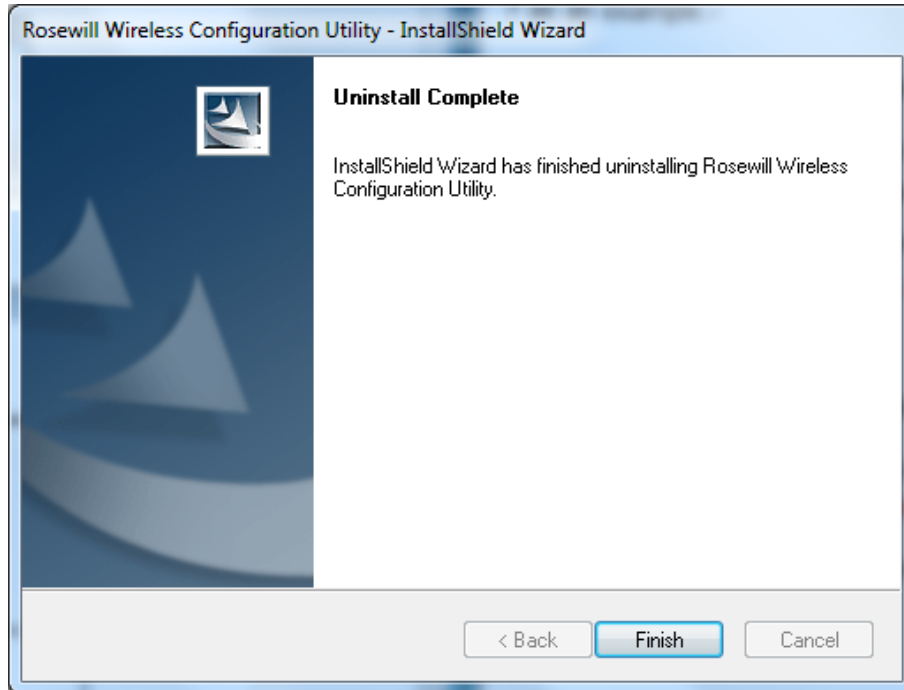


Figure 6-3

6.1.2 Uninstall the driver software from your PC

1. On the Windows taskbar, click the **Start** button, click **All programs**→**Rosewill**, and then click **Uninstall - Rosewill RNX-N300UB Driver**.

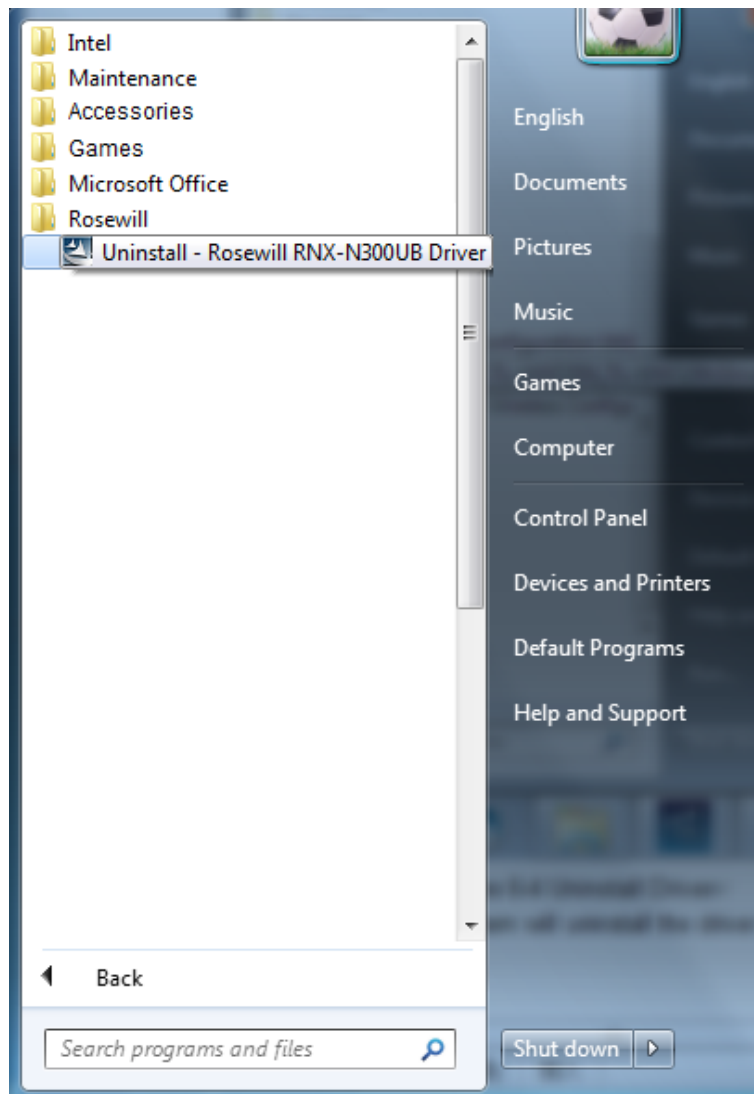


Figure 6-4

2. Follow the InstallShield Wizard to uninstall the driver software from your PC.

6.2 In Windows 8/8.1

The software uninstall steps are similar in Windows 8 and Windows 8.1, here we take Windows 8 as an example.

6.2.1 Uninstall the utility software from your PC

1. Enter the **Apps** interface, and find the **Rosewill** application, then click **Uninstall- Rosewill Wireless Configuration Utility**.

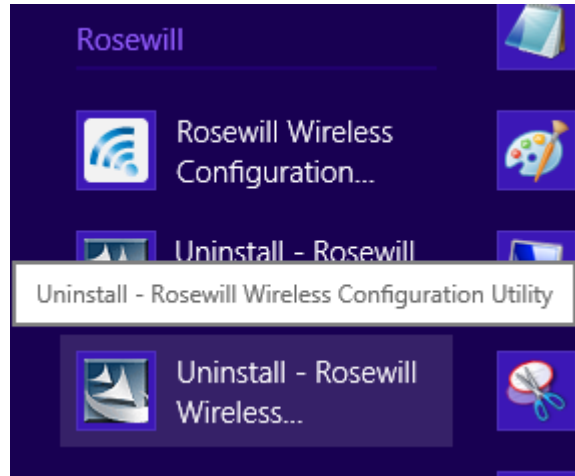


Figure 6-5

2. Click **Yes** to start uninstalling the utility software from your PC.

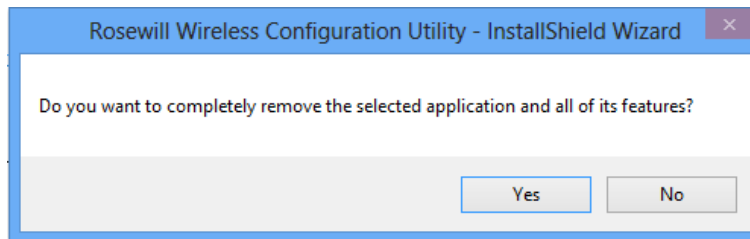


Figure 6-6

3. It may take a few minutes to undergo the whole un-installation process.

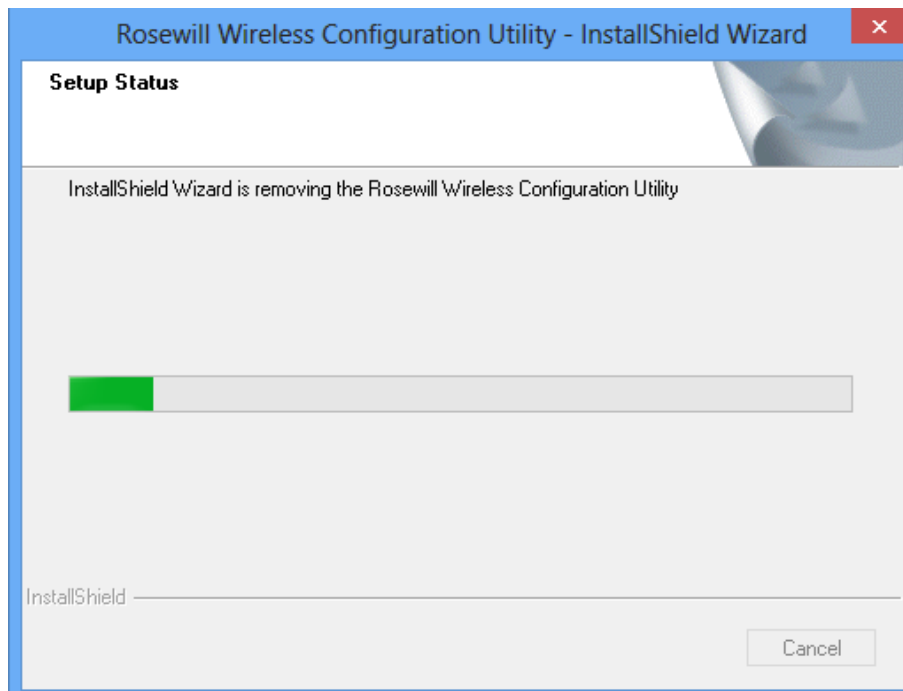


Figure 6-7

4. Click **Finish** when the figure below appears.

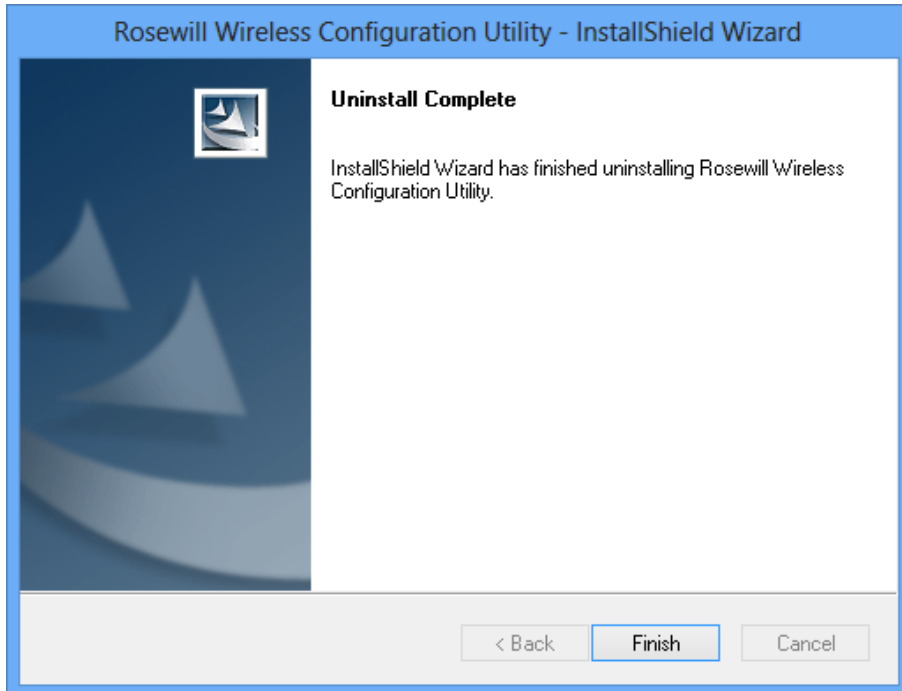


Figure 6-8

6.2.2 Uninstall the driver software from your PC

1. Enter the **Apps** interface, and find the **Rosewill** application, then click **Uninstall – Rosewill RNX-N300UB Driver**.



Figure 6-9

2. Click **Yes** to start uninstalling the driver software from your PC.

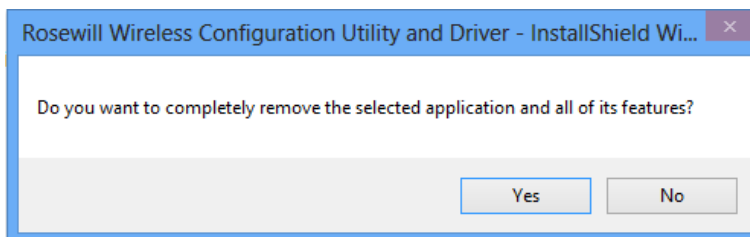


Figure 6-10

3. It may take a few minutes to undergo the whole un-installation process.

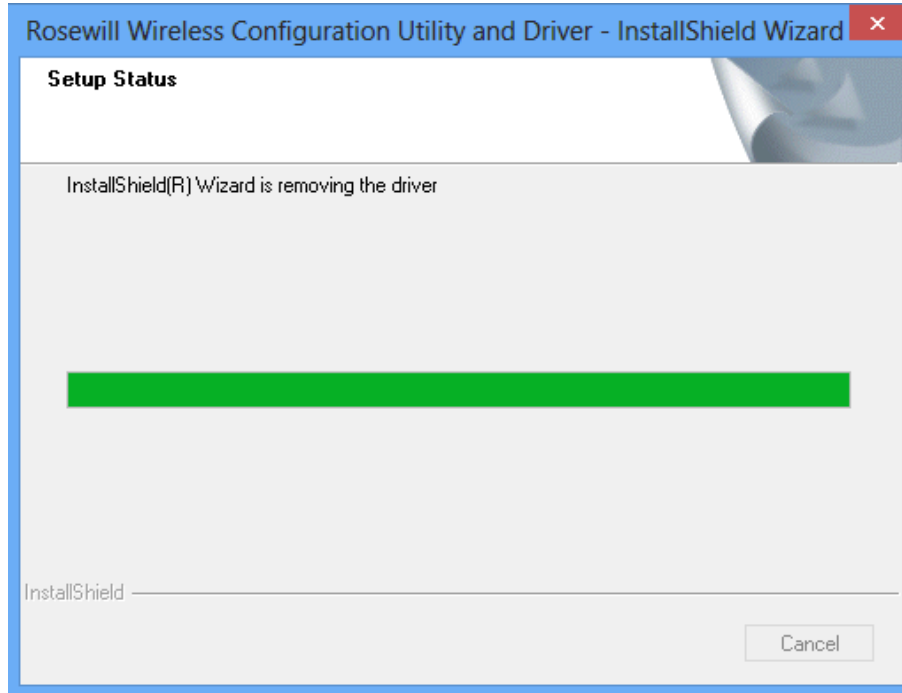


Figure 6-11

4. Click **Finish** when the figure below appears.

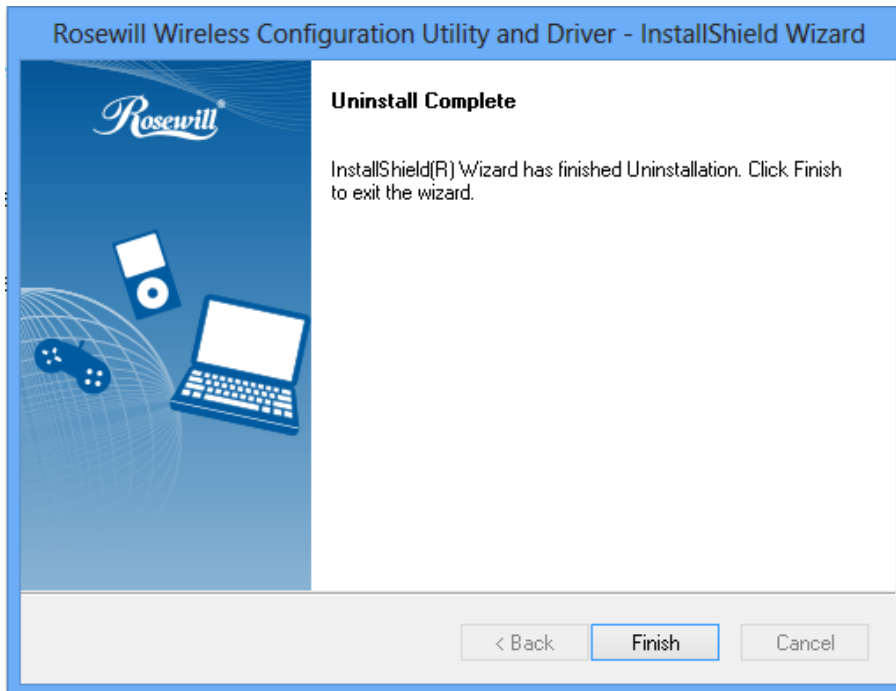


Figure 6-12

Appendix A: Specifications

Normal	
Interface	USB 2.0 Interface
Standards	IEEE 802.11n, IEEE 802.11g, IEEE 802.11b
Button	Wi-fi Protected Setup (WPS) Button (QSS Compatible)
Operating System	Windows XP, Windows Vista, Windows 7, Windows 8, Windows 8.1
Throughput	300Mbps (Maximal)
Radio Data Rate	11b: 1/2/5.5/11Mbps 11g: 6/9/12/18/24/36/48/54Mbps 11n: Up to 300Mbps
Modulation	11b:CCK,QPSK,BPSK 11g:OFDM 11n: QPSK, BPSK, 16-QAM, 64-QAM
Media Access Protocol	CSMA/CA with ACK
Data Security	WEP; WPA/WPA2; WPA-PSK/WPA2-PSK
Frequency*	2.4 ~ 2.4835GHz
Spread Spectrum	Direct Sequence Spread Spectrum (DSSS)
Safety & Emissions	FCC, CE

Environmental and Physical	
Working Temperature	0°C~40°C (32°F~104°F)
Storage Temperature	-40°C~70°C(-40°F~158°F)
Working Humidity	10% ~ 90% RH, Non-condensing
Storage Humidity	5% ~ 90% RH, Non-condensing

* Only 2.412GHz~2.462GHz is allowed to be used in USA, which means only channel 1~11 is available for American users to choose.

Appendix B: Glossary

- **802.11b** - The 802.11b standard specifies a wireless product networking at 11 Mbps using direct-sequence spread-spectrum (DSSS) technology and operating in the unlicensed radio spectrum at 2.4GHz, and WEP encryption for security. 802.11b networks are also referred to as Wi-Fi networks.
- **802.11g** - specification for wireless networking at 54 Mbps using direct-sequence spread-spectrum (DSSS) technology, using OFDM modulation and operating in the unlicensed radio spectrum at 2.4GHz, and backward compatibility with IEEE 802.11b devices, and WEP encryption for security.
- **802.11n** - 802.11n builds upon previous 802.11 standards by adding MIMO (multiple-input multiple-output). MIMO uses multiple transmitter and receiver antennas to allow for increased data throughput via spatial multiplexing and increased range by exploiting the spatial diversity, perhaps through coding schemes like Alamouti coding. The Enhanced Wireless Consortium (EWC) was formed to help accelerate the IEEE 802.11n development process and promote a technology specification for interoperability of next-generation wireless local area networking (WLAN) products.
- **Ad hoc Network** - An ad hoc network is a group of computers, each with a Wireless Adapter, connected as an independent 802.11 wireless LAN. Ad hoc wireless computers operate on a peer-to-peer basis, communicating directly with each other without the use of an access point. Ad hoc mode is also referred to as an Independent Basic Service Set (IBSS) or as peer-to-peer mode, and is useful at a departmental scale or SOHO operation.
- **DSSS - (Direct-Sequence Spread Spectrum)** - DSSS generates a redundant bit pattern for all data transmitted. This bit pattern is called a chip (or chipping code). Even if one or more bits in the chip are damaged during transmission, statistical techniques embedded in the receiver can recover the original data without the need of retransmission. To an unintended receiver, DSSS appears as low power wideband noise and is rejected (ignored) by most narrowband receivers. However, to an intended receiver (i.e. another wireless LAN endpoint), the DSSS signal is recognized as the only valid signal, and interference is inherently rejected (ignored).
- **FHSS - (Frequency Hopping Spread Spectrum)** - FHSS continuously changes (hops) the carrier frequency of a conventional carrier several times per second according to a pseudo-random set of channels. Because a fixed frequency is not used, and only the transmitter and receiver know the hop patterns, interception of FHSS is extremely difficult.
- **Infrastructure Network** - An infrastructure network is a group of computers or other devices, each with a Wireless Adapter, connected as an 802.11 wireless LAN. In infrastructure mode, the wireless devices communicate with each other and to a wired network by first going through an access point. An infrastructure wireless network connected to a wired network is referred to as a Basic Service Set (BSS). A set of two or more BSS in a single network is referred to as an Extended Service Set (ESS). Infrastructure mode is useful at a corporation scale, or when it is necessary to connect the wired and wireless networks.

- **Spread Spectrum** - Spread Spectrum technology is a wideband radio frequency technique developed by the military for use in reliable, secure, mission-critical communications systems. It is designed to trade off bandwidth efficiency for reliability, integrity, and security. In other words, more bandwidth is consumed than in the case of narrowband transmission, but the trade off produces a signal that is, in effect, louder and thus easier to detect, provided that the receiver knows the parameters of the spread-spectrum signal being broadcast. If a receiver is not tuned to the right frequency, a spread-spectrum signal looks like background noise. There are two main alternatives, Direct Sequence Spread Spectrum (DSSS) and Frequency Hopping Spread Spectrum (FHSS).
- **SSID** - A **S**ervice **S**et **I**dentification is a thirty-two character (maximum) alphanumeric key identifying a wireless local area network. For the wireless devices in a network to communicate with each other, all devices must be configured with the same SSID. This is typically the configuration parameter for a wireless PC card. It corresponds to the ESSID in the wireless Access Point and to the wireless network name. See *also* Wireless Network Name and ESSID.
- **WEP** - (**W**ired **E**quivalent **P**rivacy) - A data privacy mechanism based on a 64-bit or 128-bit or 152-bit shared key algorithm, as described in the IEEE 802.11 standard. To gain access to a WEP network, you must know the key. The key is a string of characters that you create. When using WEP, you must determine the level of encryption. The type of encryption determines the key length. 128-bit encryption requires a longer key than 64-bit encryption. Keys are defined by entering in a string in HEX (hexadecimal - using characters 0-9, A-F) or ASCII (American Standard Code for Information Interchange – alphanumeric characters) format. ASCII format is provided so you can enter a string that is easier to remember. The ASCII string is converted to HEX for use over the network. Four keys can be defined so that you can change keys easily.
- **Wi-Fi** - A trade name for the 802.11b wireless networking standard, given by the Wireless Ethernet Compatibility Alliance (WECA, see <http://www.wi-fi.net>), an industry standards group promoting interoperability among 802.11b devices.
- **WLAN** - (**W**ireless **L**ocal **A**rea **N**etwork) - A group of computers and associated devices communicate with each other wirelessly, which network serving users are limited in a local area.
- **WPA** - (**W**i-Fi **P**rotected **A**ccess) - A wireless security protocol uses TKIP (Temporal Key Integrity Protocol) encryption, which can be used in conjunction with a RADIUS server.