

AVS-5811 + APT-2000 vs. Apple TV

1.0 Technical Specification of Apple TV

: <http://www.asia.apple.com/appletv/specs.html>

1.1 Content in the box

Apple TV

Apple Remote Controller

Power cord

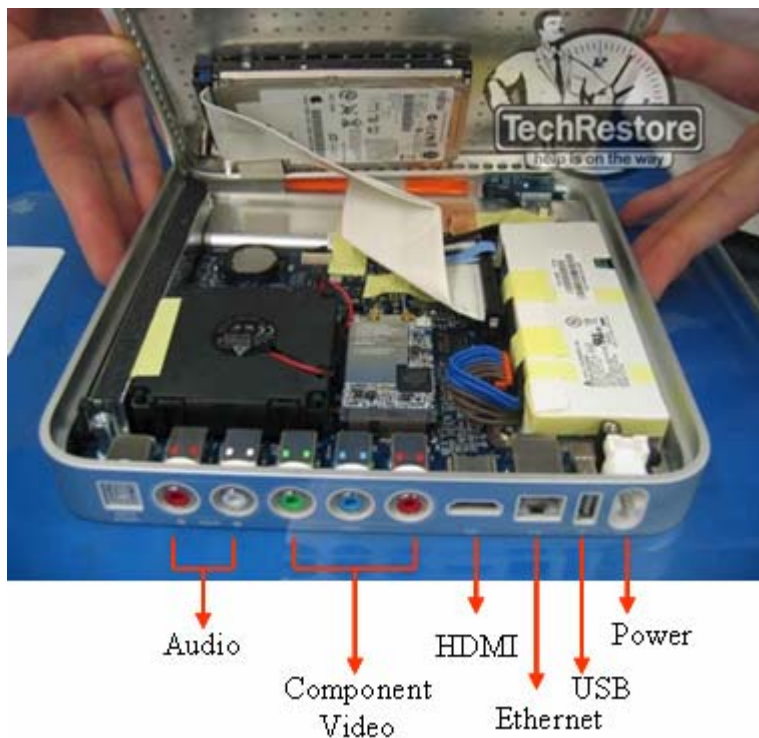
Quick Start guide

Cables such as HDMI cable, Component Video cable, and audio cable are optional.

1.2 Connectors to TV

Analog: Component Video and Audio

Digital: HDMI



1.3 Power

Built-in 48-watt universal power supply

1.4 Processor and storage

Intel processor

40 GB hard drive for storing content locally

Up to 50 hours of video

Up to 9,000 songs

Up to 25,000 pictures

1.5 System requirements

Mac or PC

iTunes 7.1

Mac: Mac OS X v10.3.9 or later

PC: Windows XP Home/Professional (SP2)

AirPort Extreme, Wi-Fi 802.11b, 802.11g, or 802.11n wireless network6
(wireless video streaming requires 802.11g or 802.11n), or 10/100BASE-T
Ethernet network

1.6 Ports and interfaces

HDMI (video and audio)

Component video

Optical audio

Analog RCA stereo audio

USB 2.0

802.11n wireless networking

Built-in IR receiver (works with Apple Remote Controller contained in the
package)

1.7 Environmental requirements

Operating temperature: 0° to 40° C (32° to 104° F)

Storage temperature: -40° to 85° C

(-40° to 185° F)

Relative humidity: 5% to 95%

Maximum operating altitude: 3,000 m (10,000 feet)

1.8 Video formats supported

H.264 and protected H.264 (from iTunes Store): Up to 5 Mbps, Progressive
Main Profile (CAVLC) with AAC-LC audio up to 160 Kbps (maximum
resolution: 1280 by 720 pixels at 24 fps, 960 by 540 pixels at 30 fps)

iTunes Store purchased video: 320 by 240 pixels or 640 by 480 pixels

1.9 Audio formats supported

AAC (16 to 320 Kbps); protected AAC (from iTunes Store); MP3 (16 to 320
Kbps); MP3 VBR; Apple Lossless; AIFF; WAV

1.10 Photos formats supported

JPEG, BMP, GIF, TIFF, PNG

1.11 TV compatibility

Enhanced-definition or high-definition widescreen TVs capable of 1080i

60/50Hz, 720p 60/50Hz, 576p 50Hz (PAL format), or 480p 60Hz

1.12 Operation mode

1.12.1 Apple TV connecting to PC

Apple TV can connect to desktop or laptop through Ethernet cable ◦ Or it can connect to PC using Wireless LAN(2.4 GHz or 5.8 GHz 802.11a/b/g, draft 802.11n (with the issue of interoperability) through Access Point (AP) ◦

1.12.2 Sync from one

Open iTunes and Apple TV appears in your devices list, ready to sync. Set iTunes to sync unwatched video. Sync new purchases. Or manually select what to sync. Set your preferences once and Apple TV automatically updates as your iTunes library changes. Everything travels over your network to Apple TV's built-in hard drive. So once you sync, even if you turn off your computer or disconnect it from the network, you can still enjoy stored video — up to 50 hours of it — from Apple TV.

1.12.3 Stream from many

If you want to watch video from another computer, you can stream it live to your TV via Apple TV. Streamed media travels over your network to your TV — without taking up space on Apple TV's hard drive. That's perfect for multicomputer households or when the computer you sync with has more in its iTunes library than will fit on Apple TV. Just choose up to five additional computers from the Sources menu. As long as a computer's on your network, it can stream to your TV

1.12.4 iTune Library

iTune Library can establish up to 5 links with Apple TV ◦

2.0 AVS-5811 + APT-2000 versus Apple TV

Item	AVS-5811 + APT-2000	Apple-TV	Remarks
PC needed ?	Yes	Yes	
Modulation scheme	Analogue	Digital	
Price	Low-Mid	High	
Installation	Plug-and-Play	Require knowledge of Ethernet, WLAN to connect Apple-TV and PC to AP	
Software set-up	None	Must connect iTunes to Apple-TV	
Resolution of video	NTSC/PAL (640 x 480)	H.264 (maximum resolution: 1280 x 720 at 24 fps, 960 x 540 at 30 fps) iTunes Store purchased video: 320 x 240 or 640 x 480	Video purchased from iTunes Store(640 x 480) is about same as NTSC standard in terms of resolution
A/V Port to TV	Analog RCA composite video Analog RCA stereo audio	HDMI (video and audio) Component video Analog RCA stereo audio	HDMI interface is available on Apple-TV
Sync with iTunes	Play audio or video files on PC , sending files through AVS-5811 + APT-2000 to TV wirelessly	Drag files into iTunes to sync over to Apple-TV through WLAN, operates Apple-TV to listen to audio files or watch video files through remote controller	
Video streaming	Run streaming video on PC and send files through AVS-5811 + APT-2000 to TV in a real-time fashion	Run streaming video on iTunes , sending files to Apple-TV and then to TV (wireless link must be on during play time)	
Is iTunes service available?	Purchase audio or video files from iTunes (with iTunes downloaded) , runs on PC and send them through AVS-5811 + APT-2000 to TV wirelessly	Purchase audio or video files from iTunes , send them through Apple-TV to TV	